

CATALOG

TEMPERATURE PROBES

APPLICATION REFRIGERATION AND AIR CONDITIONING

CATEGORY CRYOGENICS

CATEGORY

CRYOGENICS

GGU01C

PROBES WITH METAL CAPSULE BENT AT 90 DEGREES

PRODUCT FAMILY 15CA30

Probe with steel capsule, PT100 sensor, in silicone cable, diameter 4x100 mm capsule. Suitable for temperature sensing in refrigeration and air conditioning applications and in the industrial field.



TECHNICAL DATA

TEMPERATURE RANGE	(-50 +200)°C
MODEL	Steel capsule
SENSOR	PT100
CAPSULE	Diameter 4x100 mm
CABLE	Silicone
TERMINITIONS	Tin-plated, tips, connectors (other terminations available on request)
RESPONSE TIME	10 s in non-static liquid at 63.2% (depends on configuration)
IDENTIFICATION	Laser on cable, label (customizable)
DECLARATIONS OF CONFORMITY	CE MARKING, CONFLICT MINERALS, MOCA, REACH, REACH, ROHS

GTB00C

PROBES WITH STANDARD METAL CAPSULE

PRODUCT FAMILY 15CA05

Probe with steel capsule, PT100 sensor, in Teflon cable, diameter 6x40 mm capsule. Suitable for temperature sensing in laboratory equipment and machinery, in refrigeration and air conditioning applications, in air quality control applications, in heating applications, in the food field and in the industrial field.



TECHNICAL DATA

TEMPERATURE RANGE	(-50 +250)°C
MODEL	Steel capsule
SENSOR	PT100
CAPSULE	Diameter 6x40 mm
CABLE	Teflon
TERMINITIONS	Tin-plated, tips, connectors (other terminations available on request)
RESPONSE TIME	10 s in non-static liquid at 63.2% (depends on configuration)
IDENTIFICATION	Laser on cable, label (customizable)
DECLARATIONS OF CONFORMITY	CE MARKING, CONFLICT MINERALS, MOCA, REACH, REACH, ROHS

GTG00C

PROBES WITH METAL CAPSULE BENT AT 90 DEGREES

PRODUCT FAMILY 15CA30

Probe with steel capsule, PT100 sensor, in Teflon cable, diameter 6X100 mm capsule. Suitable for temperature sensing in refrigeration and air conditioning applications and in the industrial field.



TECHNICAL DATA

TEMPERATURE RANGE	(-50 +250)°C
MODEL	Steel capsule
SENSOR	PT100
CAPSULE	Diameter 6X100 mm
CABLE	Teflon
TERMINITIONS	Tin-plated, tips, connectors (other terminations available on request)
RESPONSE TIME	10 s in non-static liquid at 63.2% (depends on configuration)
IDENTIFICATION	Laser on cable, label (customizable)
DECLARATIONS OF CONFORMITY	CE MARKING, CONFLICT MINERALS, MOCA, REACH, REACH, ROHS

GTM03C

PROBES WITH THREADED CONNECTION

PRODUCT FAMILY 15CR15

Probe with connector, PT100 sensor, in Teflon cable, M6 L. 30,5 mm capsule. Suitable for temperature sensing in laboratory equipment and machinery, in refrigeration and air conditioning applications, in heating applications, in the food field and in the industrial field.



TECHNICAL DATA

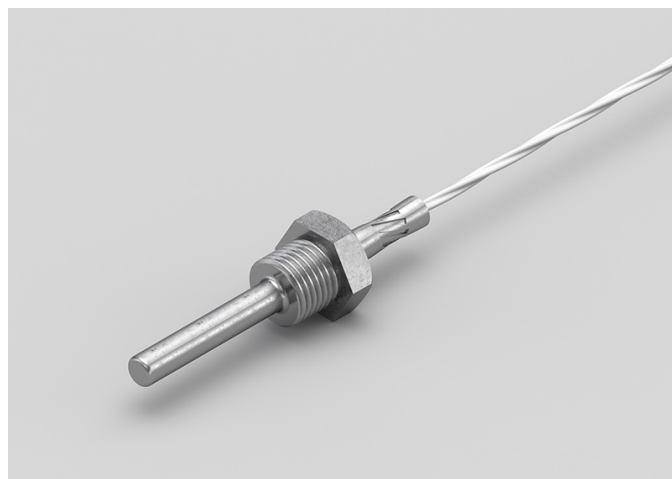
TEMPERATURE RANGE	(-50 +250)°C
MODEL	With connector
SENSOR	PT100
CAPSULE	M6 L. 30,5 mm
CABLE	Teflon
TERMINITIONS	Tin-plated, tips, connectors (other terminations available on request)
RESPONSE TIME	10 s in non-static liquid at 63.2% (depends on configuration)
IDENTIFICATION	Laser on cable, label (customizable)
DECLARATIONS OF CONFORMITY	CE MARKING, CONFLICT MINERALS, REACH, REACH, ROHS

GTM04C

PROBES WITH WELDED THREADED CONNECTION

PRODUCT FAMILY 15CR05

Probe with connector, PT100 sensor, in Teflon cable, diameter 6x60 mm capsule. Suitable for temperature sensing in laboratory equipment and machinery, in refrigeration and air conditioning applications, in heating applications, in the food field and in the industrial field.



TECHNICAL DATA

TEMPERATURE RANGE	(-50 +250)°C
MODEL	With connector
SENSOR	PT100
CAPSULE	Diameter 6x60 mm
CABLE	Teflon
TERMINITIONS	Tin-plated, tips, connectors (other terminations available on request)
RESPONSE TIME	10 s in non-static liquid at 63.2% (depends on configuration)
IDENTIFICATION	Laser on cable, label (customizable)
DECLARATIONS OF CONFORMITY	CE MARKING, CONFLICT MINERALS, REACH, REACH, ROHS

GTM05C

PROBES WITH SLIDING THREADED CONNECTION

PRODUCT FAMILY 15CR10

Probe with connector, PT100 sensor, in Teflon cable, diameter 6x60 mm capsule. Suitable for temperature sensing in laboratory equipment and machinery, in refrigeration and air conditioning applications, in heating applications, in the food field and in the industrial field.



TECHNICAL DATA

TEMPERATURE RANGE	(-50 +250)°C
MODEL	With connector
SENSOR	PT100
CAPSULE	Diameter 6x60 mm
CABLE	Teflon
TERMINITIONS	Tin-plated, tips, connectors (other terminations available on request)
RESPONSE TIME	10 s in non-static liquid at 63.2% (depends on configuration)
IDENTIFICATION	Laser on cable, label (customizable)
DECLARATIONS OF CONFORMITY	CE MARKING, CONFLICT MINERALS, REACH, REACH, ROHS

GTM06C

PROBES WITH SLIDING THREADED CONNECTION

PRODUCT FAMILY 15CR10

Probe with connector, PT100 sensor, in Teflon cable, diameter 4x40 mm capsule. Suitable for temperature sensing in laboratory equipment and machinery, in refrigeration and air conditioning applications, in air quality control applications, in heating applications, in the field of renewable energy, in the food field and in the industrial field.



TECHNICAL DATA

TEMPERATURE RANGE	(-50 +250)°C
MODEL	With connector
SENSOR	PT100
CAPSULE	Diameter 4x40 mm
CABLE	Teflon
TERMINITIONS	Tin-plated, tips, connectors (other terminations available on request)
RESPONSE TIME	10 s in non-static liquid at 63.2% (depends on configuration)
IDENTIFICATION	Laser on cable, label (customizable)
DECLARATIONS OF CONFORMITY	CE MARKING, CONFLICT MINERALS, REACH, REACH, ROHS

GTM07C

PROBES WITH WELDED THREADED CONNECTION

PRODUCT FAMILY 15CR05

Probe with connector, PT100 sensor, in Teflon cable, diameter 4x40 mm capsule. Suitable for temperature sensing in laboratory equipment and machinery, in refrigeration and air conditioning applications, in air quality control applications, in heating applications, in the field of renewable energy, in the food field and in the industrial field.



TECHNICAL DATA

TEMPERATURE RANGE	(-50 +250)°C
MODEL	With connector
SENSOR	PT100
CAPSULE	Diameter 4x40 mm
CABLE	Teflon
TERMINITIONS	Tin-plated, tips, connectors (other terminations available on request)
RESPONSE TIME	10 s in non-static liquid at 63.2% (depends on configuration)
IDENTIFICATION	Laser on cable, label (customizable)
DECLARATIONS OF CONFORMITY	CE MARKING, CONFLICT MINERALS, REACH, REACH, ROHS

GTO00C

METAL CAPSULE PROBES WITH FLANGE

PRODUCT FAMILY 15CA25

Contact probe with PT100 sensor, in Teflon cable, diameter 6x40 mm capsule. Suitable for temperature sensing in refrigeration and air conditioning applications, in air quality control applications, in heating applications, in the food field and in the industrial field.



TECHNICAL DATA

TEMPERATURE RANGE	(-50 +250)°C
MODEL	Contact
SENSOR	PT100
CAPSULE	Diameter 6x40 mm
CABLE	Teflon
TERMINITIONS	Tin-plated, tips, connectors (other terminations available on request)
RESPONSE TIME	10 s in non-static liquid at 63.2% (depends on configuration)
IDENTIFICATION	Laser on cable, label (customizable)
DECLARATIONS OF CONFORMITY	CE MARKING, CONFLICT MINERALS, REACH, REACH, ROHS

GT001C

METAL CAPSULE PROBES WITH FLANGE

PRODUCT FAMILY 15CA25

Contact probe with PT100 sensor, in Teflon cable, diameter 4x40 mm capsule. Suitable for temperature sensing in refrigeration and air conditioning applications, in air quality control applications, in heating applications, in the field of renewable energy, in the food field and in the industrial field.



TECHNICAL DATA

TEMPERATURE RANGE	(-50 +250)°C
MODEL	Contact
SENSOR	PT100
CAPSULE	Diameter 4x40 mm
CABLE	Teflon
TERMINITIONS	Tin-plated, tips, connectors (other terminations available on request)
RESPONSE TIME	10 s in non-static liquid at 63.2% (depends on configuration)
IDENTIFICATION	Laser on cable, label (customizable)
DECLARATIONS OF CONFORMITY	CE MARKING, CONFLICT MINERALS, REACH, REACH, ROHS

GT002C

STANDARD EYELET PROBES

PRODUCT FAMILY 15C005

Contact probe with PT100 sensor, in Teflon cable, diameter 6x40 mm capsule. Suitable for temperature sensing in refrigeration and air conditioning applications, in air quality control applications, in heating applications, in the food field and in the industrial field.



TECHNICAL DATA

TEMPERATURE RANGE	(-50 +250)°C
MODEL	Contact
SENSOR	PT100
CAPSULE	Diameter 6x40 mm
CABLE	Teflon
TERMINITIONS	Tin-plated, tips, connectors (other terminations available on request)
RESPONSE TIME	10 s in non-static liquid at 63.2% (depends on configuration)
IDENTIFICATION	Laser on cable, label (customizable)
DECLARATIONS OF CONFORMITY	CE MARKING, CONFLICT MINERALS, REACH, REACH, ROHS

GT003C

STANDARD EYELET PROBES

PRODUCT FAMILY 15C005

Contact probe with PT100 sensor, in Teflon cable, diameter 4x40 mm capsule. Suitable for temperature sensing in refrigeration and air conditioning applications, in air quality control applications, in heating applications, in the field of renewable energy, in the food field and in the industrial field.



TECHNICAL DATA

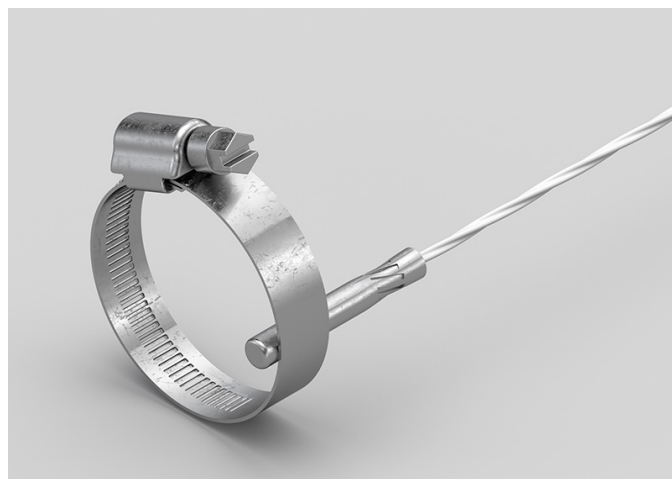
TEMPERATURE RANGE	(0 +250)°C
MODEL	Contact
SENSOR	PT100
CAPSULE	Diameter 4x40 mm
CABLE	Teflon
TERMINITIONS	Tin-plated, tips, connectors (other terminations available on request)
RESPONSE TIME	10 s in non-static liquid at 63.2% (depends on configuration)
IDENTIFICATION	Laser on cable, label (customizable)
DECLARATIONS OF CONFORMITY	CE MARKING, CONFLICT MINERALS, REACH, REACH, ROHS

GTO04C

BRACELET PROBES WITH TRANSVERSAL STEEL BAND

PRODUCT FAMILY 30GB36

Probe with bracelet, PT100 sensor, in Teflon cable, diameter 6x30 mm capsule. Suitable for temperature sensing in refrigeration and air conditioning applications, in air quality control applications, in heating applications, in the food field and in the industrial field.



TECHNICAL DATA

TEMPERATURE RANGE	(-50 +250)°C
MODEL	Bracelet
SENSOR	PT100
CAPSULE	Diameter 6x30 mm
CABLE	Teflon
TERMINITIONS	Tin-plated, tips, connectors (other terminations available on request)
RESPONSE TIME	10 s in non-static liquid at 63.2% (depends on configuration)
IDENTIFICATION	Laser on cable, label (customizable)
DECLARATIONS OF CONFORMITY	CE MARKING, CONFLICT MINERALS, REACH, REACH, ROHS

GTR01C

PROBES WITH CAPSULE PAD

PRODUCT FAMILY 15CP10

Contact probe with PT100 sensor, in Teflon cable, diameter 3x15 mm + pad 10 mm capsule. Suitable for temperature sensing in refrigeration and air conditioning applications, in air quality control applications, in heating applications, in the food field and in the industrial field.



TECHNICAL DATA

TEMPERATURE RANGE	(-50 +250)°C
MODEL	Contact
SENSOR	PT100
CAPSULE	Diameter 3x15 mm + pad 10 mm
CABLE	Teflon
TERMINITIONS	Tin-plated, tips, connectors (other terminations available on request)
RESPONSE TIME	10 s in non-static liquid at 63.2% (depends on configuration)
IDENTIFICATION	Laser on cable, label (customizable)
DECLARATIONS OF CONFORMITY	CE MARKING, CONFLICT MINERALS, REACH, REACH, ROHS

GTR02C

PROBES WITH TAPERED METAL CAPSULE

PRODUCT FAMILY 15CA20

Probe with steel capsule, PT100 sensor, in Teflon cable, diameter 3X15 mm + diameter 6X40 mm capsule. Suitable for temperature sensing in refrigeration and air conditioning applications, in air quality control applications, in heating applications, in the food field and in the industrial field.



TECHNICAL DATA

TEMPERATURE RANGE	(-50 +250)°C
MODEL	Steel capsule
SENSOR	PT100
CAPSULE	Diameter 3X15 mm + Diameter 6X40 mm
CABLE	Teflon
TERMINITIONS	Tin-plated, tips, connectors (other terminations available on request)
RESPONSE TIME	10 s in non-static liquid at 63.2% (depends on configuration)
IDENTIFICATION	Laser on cable, label (customizable)
DECLARATIONS OF CONFORMITY	CE MARKING, CONFLICT MINERALS, REACH, REACH, ROHS

GTU01C

PROBES WITH FAST METAL CAPSULE

PRODUCT FAMILY 15CA10

Probe with steel capsule, PT100 sensor, in Teflon cable, diameter 4x40 mm capsule. Suitable for temperature sensing in laboratory equipment and machinery, in refrigeration and air conditioning applications, in air quality control applications, in heating applications, in the field of renewable energy, in the food field and in the industrial field.



TECHNICAL DATA

TEMPERATURE RANGE	(-50 +250)°C
MODEL	Steel capsule
SENSOR	PT100
CAPSULE	Diameter 4x40 mm
CABLE	Teflon
TERMINITIONS	Tin-plated, tips, connectors (other terminations available on request)
RESPONSE TIME	10 s in non-static liquid at 63.2% (depends on configuration)
IDENTIFICATION	Laser on cable, label (customizable)
DECLARATIONS OF CONFORMITY	CE MARKING, CONFLICT MINERALS, MOCA, REACH, REACH, ROHS

GTU02C

PROBES WITH METAL CAPSULE BENT AT 90 DEGREES

PRODUCT FAMILY 15CA30

Probe with steel capsule, PT100 sensor, in Teflon cable, diameter 4x100 mm capsule. Suitable for temperature sensing in refrigeration and air conditioning applications and in the industrial field.



TECHNICAL DATA

TEMPERATURE RANGE	(-50 +250)°C
MODEL	Steel capsule
SENSOR	PT100
CAPSULE	Diameter 4x100 mm
CABLE	Teflon
TERMINITIONS	Tin-plated, tips, connectors (other terminations available on request)
RESPONSE TIME	10 s in non-static liquid at 63.2% (depends on configuration)
IDENTIFICATION	Laser on cable, label (customizable)
DECLARATIONS OF CONFORMITY	CE MARKING, CONFLICT MINERALS, MOCA, REACH, REACH, ROHS

IGU03C

PROBES WITH METAL
CAPSULE BENT AT 90
DEGREES

PRODUCT FAMILY 15CA30

Probe with steel capsule, PT1000 sensor, in silicone cable, diameter 4x100 mm capsule. Suitable for temperature sensing in heating applications and in the food field.



TECHNICAL DATA

TEMPERATURE RANGE	(-50 +200)°C
MODEL	Steel capsule
SENSOR	PT1000
CAPSULE	Diameter 4x100 mm
CABLE	Silicone
TERMINITIONS	Tin-plated, tips, connectors (other terminations available on request)
RESPONSE TIME	10 s in non-static liquid at 63.2% (depends on configuration)
IDENTIFICATION	Laser on cable, label (customizable)
DECLARATIONS OF CONFORMITY	CE MARKING, CONFLICT MINERALS, REACH, REACH, ROHS

ITB01C

PROBES WITH STANDARD METAL CAPSULE

PRODUCT FAMILY 15CA05

Probe with steel capsule, PT1000 sensor, in Teflon cable, diameter 6x40 mm capsule. Suitable for temperature sensing in laboratory equipment and machinery.



TECHNICAL DATA

TEMPERATURE RANGE	(-50 +250)°C
MODEL	Steel capsule
SENSOR	PT1000
CAPSULE	Diameter 6x40 mm
CABLE	Teflon
TERMINITIONS	Tin-plated, tips, connectors (other terminations available on request)
RESPONSE TIME	10 s in non-static liquid at 63.2% (depends on configuration)
IDENTIFICATION	Laser on cable, label (customizable)
DECLARATIONS OF CONFORMITY	CE MARKING, CONFLICT MINERALS, MOCA, REACH, REACH, ROHS

ITG00C

PROBES WITH METAL
CAPSULE BENT AT 90
DEGREES

PRODUCT FAMILY 15CA30

Probe with steel capsule, PT1000 sensor, in Teflon cable, diameter 6X100 mm capsule. Suitable for temperature sensing in laboratory equipment and machinery.



TECHNICAL DATA

TEMPERATURE RANGE	(-50 +250)°C
MODEL	Steel capsule
SENSOR	PT1000
CAPSULE	Diameter 6X100 mm
CABLE	Teflon
TERMINITIONS	Tin-plated, tips, connectors (other terminations available on request)
RESPONSE TIME	10 s in non-static liquid at 63.2% (depends on configuration)
IDENTIFICATION	Laser on cable, label (customizable)
DECLARATIONS OF CONFORMITY	CE MARKING, CONFLICT MINERALS, REACH, REACH, ROHS

ITM01C

PROBES WITH SLIDING
THREADED CONNECTION

PRODUCT FAMILY 15CR10

Probe with connector, PT1000 sensor, in Teflon cable, diameter 4x40 mm capsule. Suitable for temperature sensing in laboratory equipment and machinery, in heating applications and in the food field.



TECHNICAL DATA

TEMPERATURE RANGE	(-50 +250)°C
MODEL	With connector
SENSOR	PT1000
CAPSULE	Diameter 4x40 mm
CABLE	Teflon
TERMINITIONS	Tin-plated, tips, connectors (other terminations available on request)
RESPONSE TIME	10 s in non-static liquid at 63.2% (depends on configuration)
IDENTIFICATION	Laser on cable, label (customizable)
DECLARATIONS OF CONFORMITY	CE MARKING, CONFLICT MINERALS, REACH, REACH, ROHS

ITM02C

PROBES WITH WELDED
THREADED CONNECTION

PRODUCT FAMILY 15CR05

Probe with connector, PT1000 sensor, in Teflon cable, diameter 4x40 mm capsule. Suitable for temperature sensing in laboratory equipment and machinery, in heating applications and in the food field.



TECHNICAL DATA

TEMPERATURE RANGE	(-50 +250)°C
MODEL	With connector
SENSOR	PT1000
CAPSULE	Diameter 4x40 mm
CABLE	Teflon
TERMINITIONS	Tin-plated, tips, connectors (other terminations available on request)
RESPONSE TIME	10 s in non-static liquid at 63.2% (depends on configuration)
IDENTIFICATION	Laser on cable, label (customizable)
DECLARATIONS OF CONFORMITY	CE MARKING, CONFLICT MINERALS, REACH, REACH, ROHS

ITM03C

PROBES WITH WELDED
THREADED CONNECTION

PRODUCT FAMILY 15CR05

Probe with connector, PT1000 sensor, in Teflon cable, diameter 6x60 mm capsule. Suitable for temperature sensing in laboratory equipment and machinery, in heating applications, in the food field and in the industrial field.



TECHNICAL DATA

TEMPERATURE RANGE	(-50 +250)°C
MODEL	With connector
SENSOR	PT1000
CAPSULE	Diameter 6x60 mm
CABLE	Teflon
TERMINITIONS	Tin-plated, tips, connectors (other terminations available on request)
RESPONSE TIME	10 s in non-static liquid at 63.2% (depends on configuration)
IDENTIFICATION	Laser on cable, label (customizable)
DECLARATIONS OF CONFORMITY	CE MARKING, CONFLICT MINERALS, REACH, REACH, ROHS

ITM04C

PROBES WITH SLIDING
THREADED CONNECTION

PRODUCT FAMILY 15CR10

Probe with connector, PT1000 sensor, in Teflon cable, diameter 6x60 mm capsule. Suitable for temperature sensing in laboratory equipment and machinery, in heating applications, in the food field and in the industrial field.



TECHNICAL DATA

TEMPERATURE RANGE	(-50 +250)°C
MODEL	With connector
SENSOR	PT1000
CAPSULE	Diameter 6x60 mm
CABLE	Teflon
TERMINITIONS	Tin-plated, tips, connectors (other terminations available on request)
RESPONSE TIME	10 s in non-static liquid at 63.2% (depends on configuration)
IDENTIFICATION	Laser on cable, label (customizable)
DECLARATIONS OF CONFORMITY	CE MARKING, CONFLICT MINERALS, REACH, REACH, ROHS

ITM05C

PROBES WITH THREADED CONNECTION

PRODUCT FAMILY 15CR15

Probe with connector, PT1000 sensor, in Teflon cable, M6 L. 30,5 mm capsule. Suitable for temperature sensing in laboratory equipment and machinery, in heating applications and in the food field.



TECHNICAL DATA

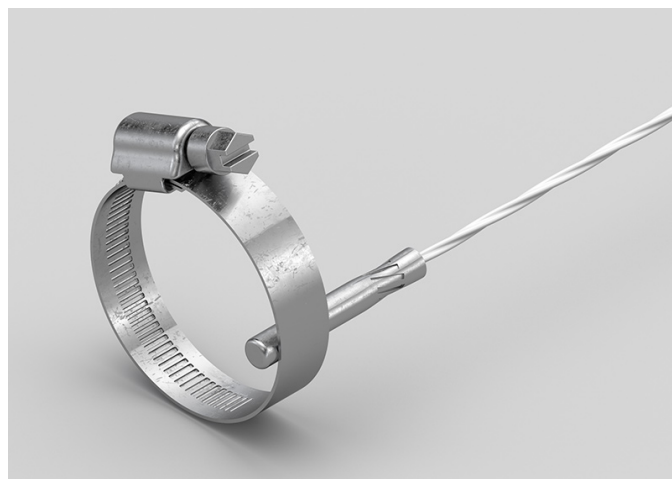
TEMPERATURE RANGE	(-50 +250)°C
MODEL	With connector
SENSOR	PT1000
CAPSULE	M6 L. 30,5 mm
CABLE	Teflon
TERMINATIONS	Tin-plated, tips, connectors (other terminations available on request)
RESPONSE TIME	10 s in non-static liquid at 63.2% (depends on configuration)
IDENTIFICATION	Laser on cable, label (customizable)
DECLARATIONS OF CONFORMITY	CE MARKING, CONFLICT MINERALS, REACH, REACH, ROHS

IT002C

BRACELET PROBES WITH TRANSVERSAL STEEL BAND

PRODUCT FAMILY 30GB36

Probe with bracelet, PT1000 sensor, in Teflon cable, diameter 6x30 mm capsule. Suitable for temperature sensing in laboratory equipment and machinery, in refrigeration and air conditioning applications, in heating applications, in the food field and in the industrial field.



TECHNICAL DATA

TEMPERATURE RANGE	(-50 +250)°C
MODEL	Bracelet
SENSOR	PT1000
CAPSULE	Diameter 6x30 mm
CABLE	Teflon
TERMINITIONS	Tin-plated, tips, connectors (other terminations available on request)
RESPONSE TIME	10 s in non-static liquid at 63.2% (depends on configuration)
IDENTIFICATION	Laser on cable, label (customizable)
DECLARATIONS OF CONFORMITY	CE MARKING, CONFLICT MINERALS, REACH, REACH, ROHS

IT003C

STANDARD EYELET PROBES

PRODUCT FAMILY 15C005

Contact probe with PT1000 sensor, in Teflon cable, diameter 4x40 mm capsule. Suitable for temperature sensing in laboratory equipment and machinery, in refrigeration and air conditioning applications, in heating applications, in the food field and in the industrial field.



TECHNICAL DATA

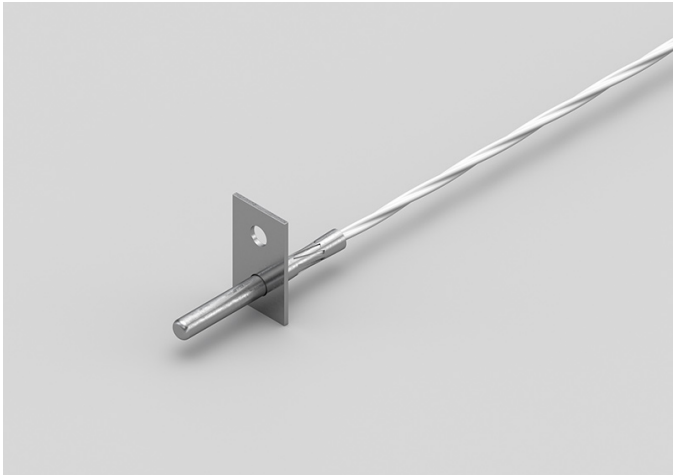
TEMPERATURE RANGE	(0 +250)°C
MODEL	Contact
SENSOR	PT1000
CAPSULE	Diameter 4x40 mm
CABLE	Teflon
TERMINITIONS	Tin-plated, tips, connectors (other terminations available on request)
RESPONSE TIME	10 s in non-static liquid at 63.2% (depends on configuration)
IDENTIFICATION	Laser on cable, label (customizable)
DECLARATIONS OF CONFORMITY	CE MARKING, CONFLICT MINERALS, REACH, REACH, ROHS

ITO04C

METAL CAPSULE PROBES WITH FLANGE

PRODUCT FAMILY 15CA25

Contact probe with PT1000 sensor, in Teflon cable, diameter 4x40 mm capsule. Suitable for temperature sensing in laboratory equipment and machinery, in heating applications and in the food field.



TECHNICAL DATA

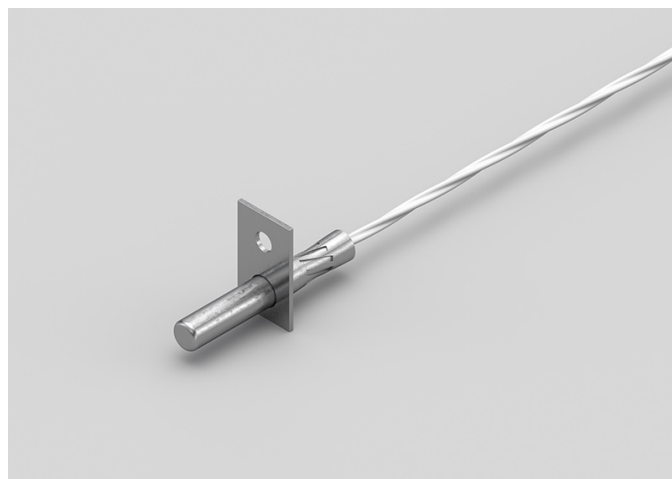
TEMPERATURE RANGE	(-50 +250)°C
MODEL	Contact
SENSOR	PT1000
CAPSULE	Diameter 4x40 mm
CABLE	Teflon
TERMINITIONS	Tin-plated, tips, connectors (other terminations available on request)
RESPONSE TIME	10 s in non-static liquid at 63.2% (depends on configuration)
IDENTIFICATION	Laser on cable, label (customizable)
DECLARATIONS OF CONFORMITY	CE MARKING, CONFLICT MINERALS, REACH, REACH, ROHS

IT005C

METAL CAPSULE PROBES WITH FLANGE

PRODUCT FAMILY 15CA25

Contact probe with PT1000 sensor, in Teflon cable, diameter 6x40 mm capsule. Suitable for temperature sensing in laboratory equipment and machinery, in heating applications, in the food field and in the industrial field.



TECHNICAL DATA

TEMPERATURE RANGE	(-50 +250)°C
MODEL	Contact
SENSOR	PT1000
CAPSULE	Diameter 6x40 mm
CABLE	Teflon
TERMINITIONS	Tin-plated, tips, connectors (other terminations available on request)
RESPONSE TIME	10 s in non-static liquid at 63.2% (depends on configuration)
IDENTIFICATION	Laser on cable, label (customizable)
DECLARATIONS OF CONFORMITY	CE MARKING, CONFLICT MINERALS, REACH, REACH, ROHS

IT006C

STANDARD EYELET PROBES

PRODUCT FAMILY 15C005

Contact probe with PT1000 sensor, in Teflon cable, diameter 6x40 mm capsule. Suitable for temperature sensing in laboratory equipment and machinery, in heating applications, in the food field and in the industrial field.



TECHNICAL DATA

TEMPERATURE RANGE	(-50 +250)°C
MODEL	Contact
SENSOR	PT1000
CAPSULE	Diameter 6x40 mm
CABLE	Teflon
TERMINITIONS	Tin-plated, tips, connectors (other terminations available on request)
RESPONSE TIME	10 s in non-static liquid at 63.2% (depends on configuration)
IDENTIFICATION	Laser on cable, label (customizable)
DECLARATIONS OF CONFORMITY	CE MARKING, CONFLICT MINERALS, REACH, REACH, ROHS

ITR00C

PROBES WITH TAPERED METAL CAPSULE

PRODUCT FAMILY 15CA20

Probe with steel capsule, PT1000 sensor, in Teflon cable, diameter 3X15 mm + diameter 6X40 mm capsule. Suitable for temperature sensing in laboratory equipment and machinery, in refrigeration and air conditioning applications, in air quality control applications, in the field of renewable energy and in the food field.



TECHNICAL DATA

TEMPERATURE RANGE	(-50 +250)°C
MODEL	Steel capsule
SENSOR	PT1000
CAPSULE	Diameter 3X15 mm + Diameter 6X40 mm
CABLE	Teflon
TERMINITIONS	Tin-plated, tips, connectors (other terminations available on request)
RESPONSE TIME	10 s in non-static liquid at 63.2% (depends on configuration)
IDENTIFICATION	Laser on cable, label (customizable)
DECLARATIONS OF CONFORMITY	CE MARKING, CONFLICT MINERALS, REACH, REACH, ROHS

ITR01C

PROBES WITH CAPSULE PAD

PRODUCT FAMILY 15CP10

Contact probe with PT1000 sensor, in Teflon cable, diameter 3x15 mm + pad 10 mm capsule. Suitable for temperature sensing in laboratory equipment and machinery, in refrigeration and air conditioning applications, in air quality control applications, in the field of renewable energy and in the food field.



TECHNICAL DATA

TEMPERATURE RANGE	(-50 +250)°C
MODEL	Contact
SENSOR	PT1000
CAPSULE	Diameter 3x15 mm + pad 10 mm
CABLE	Teflon
TERMINITIONS	Tin-plated, tips, connectors (other terminations available on request)
RESPONSE TIME	10 s in non-static liquid at 63.2% (depends on configuration)
IDENTIFICATION	Laser on cable, label (customizable)
DECLARATIONS OF CONFORMITY	CE MARKING, CONFLICT MINERALS, REACH, REACH, ROHS

ITU05C

PROBES WITH FAST METAL CAPSULE

PRODUCT FAMILY 15CA10

Probe with steel capsule, PT1000 sensor, in Teflon cable, diameter 4x40 mm capsule. Suitable for temperature sensing in laboratory equipment and machinery, in refrigeration and air conditioning applications, in air quality control applications, in the field of renewable energy and in the food field.



TECHNICAL DATA

TEMPERATURE RANGE	(-50 +250)°C
MODEL	Steel capsule
SENSOR	PT1000
CAPSULE	Diameter 4x40 mm
CABLE	Teflon
TERMINITIONS	Tin-plated, tips, connectors (other terminations available on request)
RESPONSE TIME	10 s in non-static liquid at 63.2% (depends on configuration)
IDENTIFICATION	Laser on cable, label (customizable)
DECLARATIONS OF CONFORMITY	CE MARKING, CONFLICT MINERALS, MOCA, REACH, REACH, ROHS

ITU06C

PROBES WITH METAL
CAPSULE BENT AT 90
DEGREES

PRODUCT FAMILY 15CA30

Probe with steel capsule, PT1000 sensor, in Teflon cable, diameter 4x100 mm capsule. Suitable for temperature sensing in laboratory equipment and machinery, in heating applications, in the field of renewable energy and in the food field.



TECHNICAL DATA

TEMPERATURE RANGE	(-50 +250)°C
MODEL	Steel capsule
SENSOR	PT1000
CAPSULE	Diameter 4x100 mm
CABLE	Teflon
TERMINITIONS	Tin-plated, tips, connectors (other terminations available on request)
RESPONSE TIME	10 s in non-static liquid at 63.2% (depends on configuration)
IDENTIFICATION	Laser on cable, label (customizable)
DECLARATIONS OF CONFORMITY	CE MARKING, CONFLICT MINERALS, REACH, REACH, ROHS

RTH02C

PROBES WITH METAL
CAPSULE BENT AT 90
DEGREES

PRODUCT FAMILY 15CA30

Probe with steel capsule, NTC sensor, in Teflon cable, diameter 6X100 mm capsule. Suitable for temperature sensing in heating applications and in the food field.



TECHNICAL DATA

TEMPERATURE RANGE	(-50 +250)°C
MODEL	Steel capsule
SENSOR	NTC
CAPSULE	Diameter 6X100 mm
CABLE	Teflon
TERMINITIONS	Tin-plated, tips, connectors (other terminations available on request)
RESPONSE TIME	10 s in non-static liquid at 63.2% (depends on configuration)
IDENTIFICATION	Laser on cable, label (customizable)
DECLARATIONS OF CONFORMITY	CE MARKING, CONFLICT MINERALS, MOCA, REACH, REACH, ROHS

RTU04C

PROBES WITH METAL CAPSULE BENT AT 90 DEGREES

PRODUCT FAMILY 15CA30

Probe with steel capsule, NTC sensor, in Teflon cable, diameter 4x100 mm capsule. Suitable for temperature sensing in the field of renewable energy and in the food field.



TECHNICAL DATA

TEMPERATURE RANGE	(-50 +250)°C
MODEL	Steel capsule
SENSOR	NTC
CAPSULE	Diameter 4x100 mm
CABLE	Teflon
TERMINITIONS	Tin-plated, tips, connectors (other terminations available on request)
RESPONSE TIME	10 s in non-static liquid at 63.2% (depends on configuration)
IDENTIFICATION	Laser on cable, label (customizable)
DECLARATIONS OF CONFORMITY	CE MARKING, CONFLICT MINERALS, MOCA, REACH, REACH, ROHS



SACET S.R.L.
Via del Candel, 55/D
32100 Belluno (BL) Italy

C.F. E P.I. 00654590256

PHONE NUMBER +39 0437 33166

EMAIL info@sacet-probes.com