

# CATALOG

## TEMPERATURE PROBES

**APPLICATION** INDUSTRY

**CATEGORY** PLASTIC MATERIALS

# CATEGORY

## PLASTIC MATERIALS

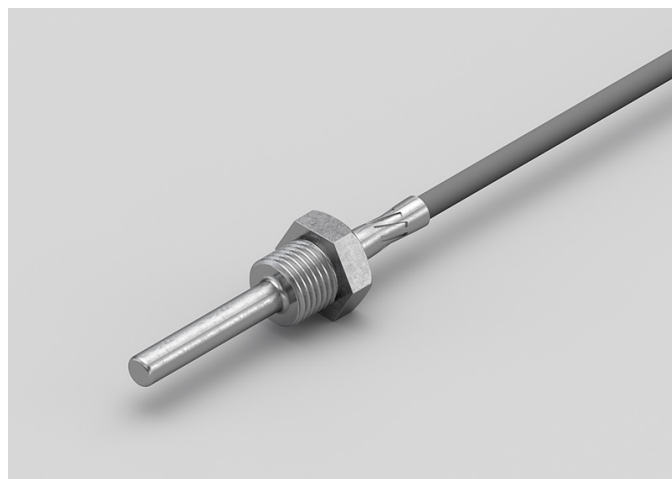
---

**GGM06C**

# PROBES WITH WELDED THREADED CONNECTION

**PRODUCT FAMILY 15CR05**

Probe with connector, PT100 sensor, in silicone cable, diameter 6x60 mm capsule. Suitable for temperature sensing in heating applications and in the food field.



## TECHNICAL DATA

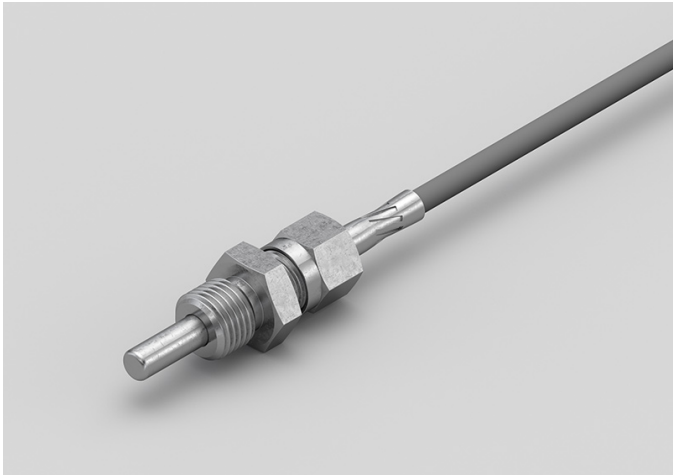
TEMPERATURE RANGE	(-50 +200)°C
MODEL	With connector
SENSOR	PT100
CAPSULE	Diameter 6x60 mm
CABLE	Silicone
TERMINATIONS	Tin-plated, tips, connectors (other terminations available on request)
RESPONSE TIME	10 s in non-static liquid at 63.2% (depends on configuration)
IDENTIFICATION	Laser on cable, label (customizable)
DECLARATIONS OF CONFORMITY	CE MARKING, CONFLICT MINERALS, REACH, REACH, ROHS

GGM07C

PROBES WITH SLIDING  
THREADED CONNECTION

PRODUCT FAMILY 15CR10

Probe with connector, PT100 sensor, in silicone cable, diameter 6x60 mm capsule. Suitable for temperature sensing in heating applications and in the food field.



TECHNICAL DATA

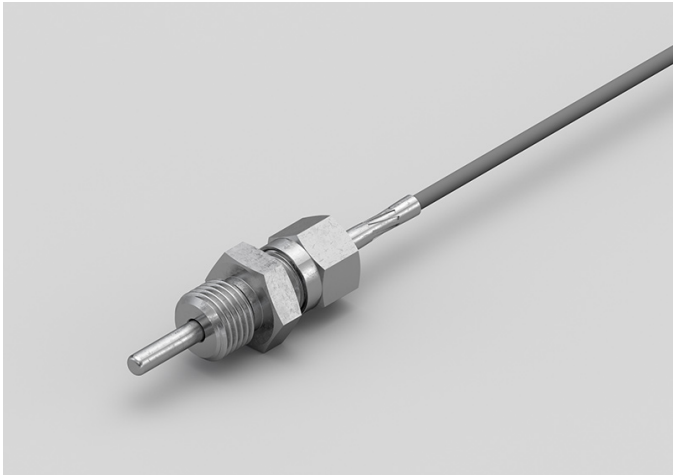
TEMPERATURE RANGE	(-50 +200)°C
MODEL	With connector
SENSOR	PT100
CAPSULE	Diameter 6x60 mm
CABLE	Silicone
TERMINITIONS	Tin-plated, tips, connectors (other terminations available on request)
RESPONSE TIME	10 s in non-static liquid at 63.2% (depends on configuration)
IDENTIFICATION	Laser on cable, label (customizable)
DECLARATIONS OF CONFORMITY	CE MARKING, CONFLICT MINERALS, REACH, REACH, ROHS

GGM08C

PROBES WITH SLIDING  
THREADED CONNECTION

PRODUCT FAMILY 15CR10

Probe with connector, PT100 sensor, in silicone cable, diameter 4x40 mm capsule. Suitable for temperature sensing in heating applications and in the food field.



TECHNICAL DATA

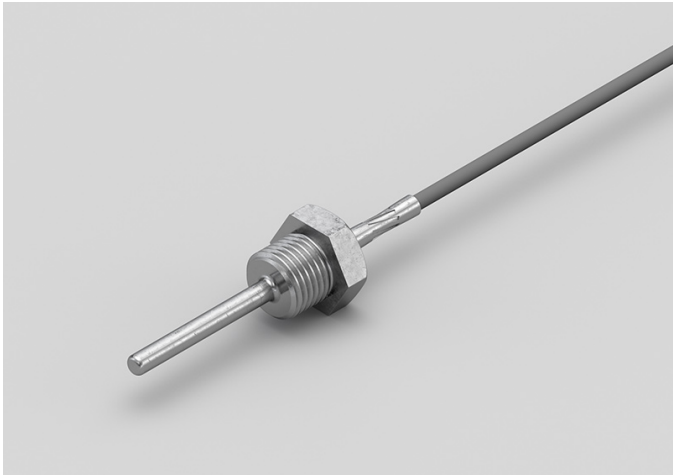
TEMPERATURE RANGE	(-50 +200)°C
MODEL	With connector
SENSOR	PT100
CAPSULE	Diameter 4x40 mm
CABLE	Silicone
TERMINITIONS	Tin-plated, tips, connectors (other terminations available on request)
RESPONSE TIME	10 s in non-static liquid at 63.2% (depends on configuration)
IDENTIFICATION	Laser on cable, label (customizable)
DECLARATIONS OF CONFORMITY	CE MARKING, CONFLICT MINERALS, REACH, REACH, ROHS

GGM09C

PROBES WITH WELDED  
THREADED CONNECTION

PRODUCT FAMILY 15CR05

Probe with connector, PT100 sensor, in silicone cable, diameter 4x40 mm capsule. Suitable for temperature sensing in laboratory equipment and machinery, in refrigeration and air conditioning applications, in air quality control applications, in heating applications, in the field of renewable energy, in the food field and in the industrial field.



TECHNICAL DATA

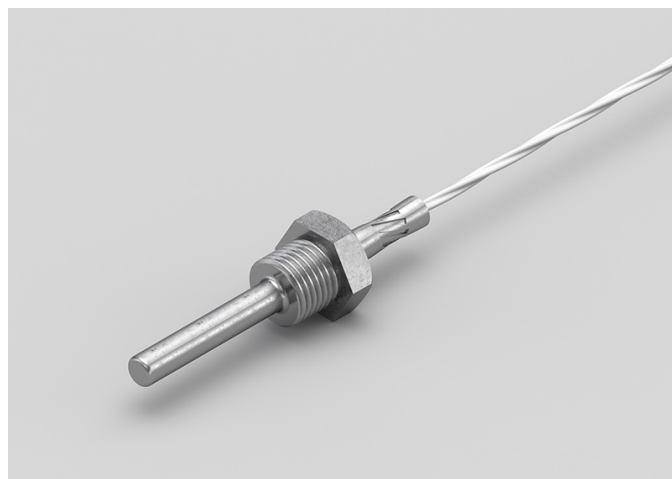
TEMPERATURE RANGE	(-50 +200)°C
MODEL	With connector
SENSOR	PT100
CAPSULE	Diameter 4x40 mm
CABLE	Silicone
TERMINITIONS	Tin-plated, tips, connectors (other terminations available on request)
RESPONSE TIME	10 s in non-static liquid at 63.2% (depends on configuration)
IDENTIFICATION	Laser on cable, label (customizable)
DECLARATIONS OF CONFORMITY	CE MARKING, CONFLICT MINERALS, REACH, REACH, ROHS

**GTM04C**

# PROBES WITH WELDED THREADED CONNECTION

**PRODUCT FAMILY 15CR05**

Probe with connector, PT100 sensor, in Teflon cable, diameter 6x60 mm capsule. Suitable for temperature sensing in laboratory equipment and machinery, in refrigeration and air conditioning applications, in heating applications, in the food field and in the industrial field.



## TECHNICAL DATA

TEMPERATURE RANGE	(-50 +250)°C
MODEL	With connector
SENSOR	PT100
CAPSULE	Diameter 6x60 mm
CABLE	Teflon
TERMINITIONS	Tin-plated, tips, connectors (other terminations available on request)
RESPONSE TIME	10 s in non-static liquid at 63.2% (depends on configuration)
IDENTIFICATION	Laser on cable, label (customizable)
DECLARATIONS OF CONFORMITY	CE MARKING, CONFLICT MINERALS, REACH, REACH, ROHS

**GTM05C**

# PROBES WITH SLIDING THREADED CONNECTION

**PRODUCT FAMILY 15CR10**

Probe with connector, PT100 sensor, in Teflon cable, diameter 6x60 mm capsule. Suitable for temperature sensing in laboratory equipment and machinery, in refrigeration and air conditioning applications, in heating applications, in the food field and in the industrial field.



## TECHNICAL DATA

TEMPERATURE RANGE	(-50 +250)°C
MODEL	With connector
SENSOR	PT100
CAPSULE	Diameter 6x60 mm
CABLE	Teflon
TERMINITIONS	Tin-plated, tips, connectors (other terminations available on request)
RESPONSE TIME	10 s in non-static liquid at 63.2% (depends on configuration)
IDENTIFICATION	Laser on cable, label (customizable)
DECLARATIONS OF CONFORMITY	CE MARKING, CONFLICT MINERALS, REACH, REACH, ROHS



GTM06C

PROBES WITH SLIDING  
THREADED CONNECTION

PRODUCT FAMILY 15CR10

Probe with connector, PT100 sensor, in Teflon cable, diameter 4x40 mm capsule. Suitable for temperature sensing in laboratory equipment and machinery, in refrigeration and air conditioning applications, in air quality control applications, in heating applications, in the field of renewable energy, in the food field and in the industrial field.



TECHNICAL DATA

TEMPERATURE RANGE	(-50 +250)°C
MODEL	With connector
SENSOR	PT100
CAPSULE	Diameter 4x40 mm
CABLE	Teflon
TERMINITIONS	Tin-plated, tips, connectors (other terminations available on request)
RESPONSE TIME	10 s in non-static liquid at 63.2% (depends on configuration)
IDENTIFICATION	Laser on cable, label (customizable)
DECLARATIONS OF CONFORMITY	CE MARKING, CONFLICT MINERALS, REACH, REACH, ROHS

**GTM07C**

# PROBES WITH WELDED THREADED CONNECTION

## PRODUCT FAMILY 15CR05

Probe with connector, PT100 sensor, in Teflon cable, diameter 4x40 mm capsule. Suitable for temperature sensing in laboratory equipment and machinery, in refrigeration and air conditioning applications, in air quality control applications, in heating applications, in the field of renewable energy, in the food field and in the industrial field.



## TECHNICAL DATA

TEMPERATURE RANGE	(-50 +250)°C
MODEL	With connector
SENSOR	PT100
CAPSULE	Diameter 4x40 mm
CABLE	Teflon
TERMINITIONS	Tin-plated, tips, connectors (other terminations available on request)
RESPONSE TIME	10 s in non-static liquid at 63.2% (depends on configuration)
IDENTIFICATION	Laser on cable, label (customizable)
DECLARATIONS OF CONFORMITY	CE MARKING, CONFLICT MINERALS, REACH, REACH, ROHS

**GVM01C**

# PROBES WITH WELDED THREADED CONNECTION

**PRODUCT FAMILY 15CR05**

Probe with connector, PT100 sensor, in glass fibre cable, diameter 6x60 mm capsule. Suitable for temperature sensing in laboratory equipment and machinery, in heating applications, in the food field and in the industrial field.



## TECHNICAL DATA

TEMPERATURE RANGE	(0 +350)°C
MODEL	With connector
SENSOR	PT100
CAPSULE	Diameter 6x60 mm
CABLE	Glass fibre
TERMINITIONS	Tin-plated, tips, connectors (other terminations available on request)
RESPONSE TIME	10 s in non-static liquid at 63.2% (depends on configuration)
IDENTIFICATION	Laser on cable, label (customizable)
DECLARATIONS OF CONFORMITY	CE MARKING, CONFLICT MINERALS, REACH, REACH, ROHS

**GVM02C**

# PROBES WITH SLIDING THREADED CONNECTION

**PRODUCT FAMILY 15CR10**

Probe with connector, PT100 sensor, in glass fibre cable, diameter 6x60 mm capsule. Suitable for temperature sensing in laboratory equipment and machinery, in heating applications, in the food field and in the industrial field.



## TECHNICAL DATA

TEMPERATURE RANGE	(0 +350)°C
MODEL	With connector
SENSOR	PT100
CAPSULE	Diameter 6x60 mm
CABLE	Glass fibre
TERMINITIONS	Tin-plated, tips, connectors (other terminations available on request)
RESPONSE TIME	10 s in non-static liquid at 63.2% (depends on configuration)
IDENTIFICATION	Laser on cable, label (customizable)
DECLARATIONS OF CONFORMITY	CE MARKING, CONFLICT MINERALS, REACH, REACH, ROHS

**GVM03C**

# PROBES WITH SLIDING THREADED CONNECTION

**PRODUCT FAMILY 15CR10**

Probe with connector, PT100 sensor, in glass fibre cable, diameter 4x40 mm capsule. Suitable for temperature sensing in laboratory equipment and machinery, in refrigeration and air conditioning applications, in air quality control applications, in heating applications, in the field of renewable energy, in the food field and in the industrial field.



## TECHNICAL DATA

TEMPERATURE RANGE	(0 +250)°C
MODEL	With connector
SENSOR	PT100
CAPSULE	Diameter 4x40 mm
CABLE	Glass fibre
TERMINITIONS	Tin-plated, tips, connectors (other terminations available on request)
RESPONSE TIME	10 s in non-static liquid at 63.2% (depends on configuration)
IDENTIFICATION	Laser on cable, label (customizable)
DECLARATIONS OF CONFORMITY	CE MARKING, CONFLICT MINERALS, REACH, REACH, ROHS

**GVM04C**

# PROBES WITH WELDED THREADED CONNECTION

**PRODUCT FAMILY 15CR05**

Probe with connector, PT100 sensor, in glass fibre cable, diameter 4x40 mm capsule. Suitable for temperature sensing in laboratory equipment and machinery, in refrigeration and air conditioning applications, in air quality control applications, in heating applications, in the field of renewable energy, in the food field and in the industrial field.



## TECHNICAL DATA

TEMPERATURE RANGE	(0 +250)°C
MODEL	With connector
SENSOR	PT100
CAPSULE	Diameter 4x40 mm
CABLE	Glass fibre
TERMINITIONS	Tin-plated, tips, connectors (other terminations available on request)
RESPONSE TIME	10 s in non-static liquid at 63.2% (depends on configuration)
IDENTIFICATION	Laser on cable, label (customizable)
DECLARATIONS OF CONFORMITY	CE MARKING, CONFLICT MINERALS, REACH, REACH, ROHS

**GVM05C**

# PROBES WITH BAYONET CONNECTOR

**PRODUCT FAMILY 15CR20**

Probe with connector, PT100 sensor, in glass fibre cable, diameter 6x15 mm capsule. Suitable for temperature sensing in the industrial field.



## TECHNICAL DATA

TEMPERATURE RANGE	(0 +250)°C
MODEL	With connector
SENSOR	PT100
CAPSULE	Diameter 6x15 mm
CABLE	Glass fibre
TERMINITIONS	Tin-plated, tips, connectors (other terminations available on request)
RESPONSE TIME	10 s in non-static liquid at 63.2% (depends on configuration)
IDENTIFICATION	Laser on cable, label (customizable)
DECLARATIONS OF CONFORMITY	CE MARKING, CONFLICT MINERALS, REACH, REACH, ROHS

**GVM06C**

# PROBES WITH SCREW CONNECTION

**PRODUCT FAMILY 15CR25**

Probe with connector, PT100 sensor, in glass fibre cable, diameter 6x15 mm capsule. Suitable for temperature sensing in the industrial field.



## TECHNICAL DATA

TEMPERATURE RANGE	(0 +250)°C
MODEL	With connector
SENSOR	PT100
CAPSULE	Diameter 6x15 mm
CABLE	Glass fibre
TERMINITIONS	Tin-plated, tips, connectors (other terminations available on request)
RESPONSE TIME	10 s in non-static liquid at 63.2% (depends on configuration)
IDENTIFICATION	Laser on cable, label (customizable)
DECLARATIONS OF CONFORMITY	CE MARKING, CONFLICT MINERALS, REACH, REACH, ROHS



IGM06C

PROBES WITH SLIDING  
THREADED CONNECTION

PRODUCT FAMILY 15CR10

Probe with connector, PT1000 sensor, in silicone cable, diameter 4x40 mm capsule. Suitable for temperature sensing in heating applications, in the field of renewable energy and in the food field.



TECHNICAL DATA

TEMPERATURE RANGE	(-50 +200)°C
MODEL	With connector
SENSOR	PT1000
CAPSULE	Diameter 4x40 mm
CABLE	Silicone
TERMINITIONS	Tin-plated, tips, connectors (other terminations available on request)
RESPONSE TIME	10 s in non-static liquid at 63.2% (depends on configuration)
IDENTIFICATION	Laser on cable, label (customizable)
DECLARATIONS OF CONFORMITY	CE MARKING, CONFLICT MINERALS, REACH, REACH, ROHS

IGM07C

STANDARD EYELET  
PROBES

PRODUCT FAMILY 15C005

Contact probe with PT1000 sensor, in silicone cable, diameter 4x40 mm capsule. Suitable for temperature sensing in refrigeration and air conditioning applications, in air quality control applications and in the food field.



TECHNICAL DATA

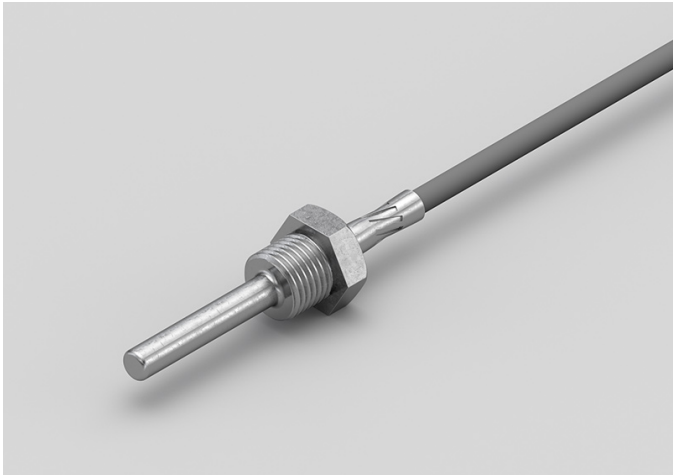
TEMPERATURE RANGE	(-50 +200)°C
MODEL	Contact
SENSOR	PT1000
CAPSULE	Diameter 4x40 mm
CABLE	Silicone
TERMINITIONS	Tin-plated, tips, connectors (other terminations available on request)
RESPONSE TIME	10 s in non-static liquid at 63.2% (depends on configuration)
IDENTIFICATION	Laser on cable, label (customizable)
DECLARATIONS OF CONFORMITY	CE MARKING, CONFLICT MINERALS, REACH, REACH, ROHS

IGM08C

PROBES WITH WELDED  
THREADED CONNECTION

PRODUCT FAMILY 15CR05

Probe with connector, PT1000 sensor, in silicone cable, diameter 6x60 mm capsule. Suitable for temperature sensing in refrigeration and air conditioning applications, in air quality control applications and in the food field.



TECHNICAL DATA

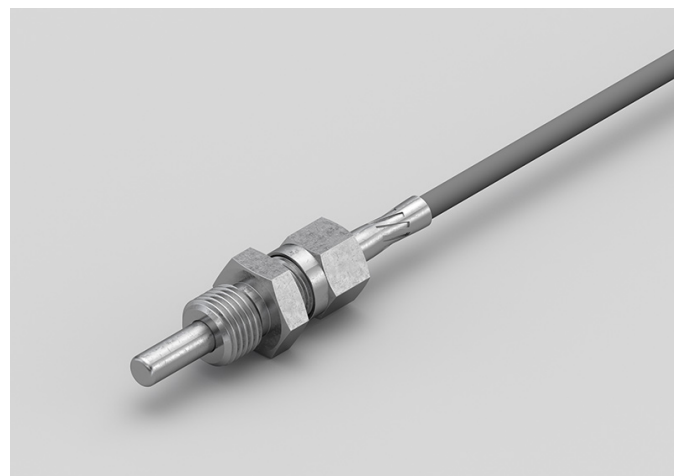
TEMPERATURE RANGE	(-50 +200)°C
MODEL	With connector
SENSOR	PT1000
CAPSULE	Diameter 6x60 mm
CABLE	Silicone
TERMINITIONS	Tin-plated, tips, connectors (other terminations available on request)
RESPONSE TIME	10 s in non-static liquid at 63.2% (depends on configuration)
IDENTIFICATION	Laser on cable, label (customizable)
DECLARATIONS OF CONFORMITY	CE MARKING, CONFLICT MINERALS, REACH, REACH, ROHS

**IGM09C**

# PROBES WITH SLIDING THREADED CONNECTION

**PRODUCT FAMILY 15CR10**

Probe with connector, PT1000 sensor, in silicone cable, diameter 6x60 mm capsule. Suitable for temperature sensing in refrigeration and air conditioning applications, in air quality control applications and in the food field.



## TECHNICAL DATA

TEMPERATURE RANGE	(-50 +200)°C
MODEL	With connector
SENSOR	PT1000
CAPSULE	Diameter 6x60 mm
CABLE	Silicone
TERMINITIONS	Tin-plated, tips, connectors (other terminations available on request)
RESPONSE TIME	10 s in non-static liquid at 63.2% (depends on configuration)
IDENTIFICATION	Laser on cable, label (customizable)
DECLARATIONS OF CONFORMITY	CE MARKING, CONFLICT MINERALS, REACH, REACH, ROHS

ITM01C

PROBES WITH SLIDING  
THREADED CONNECTION

PRODUCT FAMILY 15CR10

Probe with connector, PT1000 sensor, in Teflon cable, diameter 4x40 mm capsule. Suitable for temperature sensing in laboratory equipment and machinery, in heating applications and in the food field.



TECHNICAL DATA

TEMPERATURE RANGE	(-50 +250)°C
MODEL	With connector
SENSOR	PT1000
CAPSULE	Diameter 4x40 mm
CABLE	Teflon
TERMINITIONS	Tin-plated, tips, connectors (other terminations available on request)
RESPONSE TIME	10 s in non-static liquid at 63.2% (depends on configuration)
IDENTIFICATION	Laser on cable, label (customizable)
DECLARATIONS OF CONFORMITY	CE MARKING, CONFLICT MINERALS, REACH, REACH, ROHS

ITM02C

PROBES WITH WELDED  
THREADED CONNECTION

PRODUCT FAMILY 15CR05

Probe with connector, PT1000 sensor, in Teflon cable, diameter 4x40 mm capsule. Suitable for temperature sensing in laboratory equipment and machinery, in heating applications and in the food field.



TECHNICAL DATA

TEMPERATURE RANGE	(-50 +250)°C
MODEL	With connector
SENSOR	PT1000
CAPSULE	Diameter 4x40 mm
CABLE	Teflon
TERMINITIONS	Tin-plated, tips, connectors (other terminations available on request)
RESPONSE TIME	10 s in non-static liquid at 63.2% (depends on configuration)
IDENTIFICATION	Laser on cable, label (customizable)
DECLARATIONS OF CONFORMITY	CE MARKING, CONFLICT MINERALS, REACH, REACH, ROHS

ITM03C

PROBES WITH WELDED  
THREADED CONNECTION

PRODUCT FAMILY 15CR05

Probe with connector, PT1000 sensor, in Teflon cable, diameter 6x60 mm capsule. Suitable for temperature sensing in laboratory equipment and machinery, in heating applications, in the food field and in the industrial field.



TECHNICAL DATA

TEMPERATURE RANGE	(-50 +250)°C
MODEL	With connector
SENSOR	PT1000
CAPSULE	Diameter 6x60 mm
CABLE	Teflon
TERMINITIONS	Tin-plated, tips, connectors (other terminations available on request)
RESPONSE TIME	10 s in non-static liquid at 63.2% (depends on configuration)
IDENTIFICATION	Laser on cable, label (customizable)
DECLARATIONS OF CONFORMITY	CE MARKING, CONFLICT MINERALS, REACH, REACH, ROHS

## ITM04C

# PROBES WITH SLIDING THREADED CONNECTION

### PRODUCT FAMILY 15CR10

Probe with connector, PT1000 sensor, in Teflon cable, diameter 6x60 mm capsule. Suitable for temperature sensing in laboratory equipment and machinery, in heating applications, in the food field and in the industrial field.



## TECHNICAL DATA

TEMPERATURE RANGE	(-50 +250)°C
MODEL	With connector
SENSOR	PT1000
CAPSULE	Diameter 6x60 mm
CABLE	Teflon
TERMINITIONS	Tin-plated, tips, connectors (other terminations available on request)
RESPONSE TIME	10 s in non-static liquid at 63.2% (depends on configuration)
IDENTIFICATION	Laser on cable, label (customizable)
DECLARATIONS OF CONFORMITY	CE MARKING, CONFLICT MINERALS, REACH, REACH, ROHS



**IVM00C**

# PROBES WITH SLIDING THREADED CONNECTION

**PRODUCT FAMILY 15CR10**

Probe with connector, PT1000 sensor, in glass fibre cable, diameter 4x40 mm capsule. Suitable for temperature sensing in laboratory equipment and machinery, in heating applications, in the field of renewable energy, in the food field and in the industrial field.



## TECHNICAL DATA

TEMPERATURE RANGE	(0 +250)°C
MODEL	With connector
SENSOR	PT1000
CAPSULE	Diameter 4x40 mm
CABLE	Glass fibre
TERMINITIONS	Tin-plated, tips, connectors (other terminations available on request)
RESPONSE TIME	10 s in non-static liquid at 63.2% (depends on configuration)
IDENTIFICATION	Laser on cable, label (customizable)
DECLARATIONS OF CONFORMITY	CE MARKING, CONFLICT MINERALS, REACH, REACH, ROHS

**IVM01C**

# PROBES WITH WELDED THREADED CONNECTION

**PRODUCT FAMILY 15CR05**

Probe with connector, PT1000 sensor, in glass fibre cable, diameter 4x40 mm capsule. Suitable for temperature sensing in laboratory equipment and machinery, in heating applications, in the field of renewable energy and in the food field.



## TECHNICAL DATA

TEMPERATURE RANGE	(0 +250)°C
MODEL	With connector
SENSOR	PT1000
CAPSULE	Diameter 4x40 mm
CABLE	Glass fibre
TERMINITIONS	Tin-plated, tips, connectors (other terminations available on request)
RESPONSE TIME	10 s in non-static liquid at 63.2% (depends on configuration)
IDENTIFICATION	Laser on cable, label (customizable)
DECLARATIONS OF CONFORMITY	CE MARKING, CONFLICT MINERALS, REACH, REACH, ROHS

**IVM02C**

# PROBES WITH WELDED THREADED CONNECTION

**PRODUCT FAMILY 15CR05**

Probe with connector, PT1000 sensor, in glass fibre cable, diameter 6x60 mm capsule. Suitable for temperature sensing in laboratory equipment and machinery, in refrigeration and air conditioning applications, in heating applications, in the field of renewable energy, in the food field and in the industrial field.



## TECHNICAL DATA

TEMPERATURE RANGE	(0 +350)°C
MODEL	With connector
SENSOR	PT1000
CAPSULE	Diameter 6x60 mm
CABLE	Glass fibre
TERMINITIONS	Tin-plated, tips, connectors (other terminations available on request)
RESPONSE TIME	10 s in non-static liquid at 63.2% (depends on configuration)
IDENTIFICATION	Laser on cable, label (customizable)
DECLARATIONS OF CONFORMITY	CE MARKING, CONFLICT MINERALS, REACH, REACH, ROHS

**IVM03C**

# PROBES WITH SLIDING THREADED CONNECTION

**PRODUCT FAMILY 15CR10**

Probe with connector, PT1000 sensor, in glass fibre cable, diameter 6x60 mm capsule. Suitable for temperature sensing in laboratory equipment and machinery, in refrigeration and air conditioning applications, in heating applications, in the field of renewable energy, in the food field and in the industrial field.



## TECHNICAL DATA

TEMPERATURE RANGE	(0 +350)°C
MODEL	With connector
SENSOR	PT1000
CAPSULE	Diameter 6x60 mm
CABLE	Glass fibre
TERMINITIONS	Tin-plated, tips, connectors (other terminations available on request)
RESPONSE TIME	10 s in non-static liquid at 63.2% (depends on configuration)
IDENTIFICATION	Laser on cable, label (customizable)
DECLARATIONS OF CONFORMITY	CE MARKING, CONFLICT MINERALS, REACH, REACH, ROHS

IVR03C

PROBES WITH BAYONET CONNECTOR

PRODUCT FAMILY 15CR20

Probe with connector, PT1000 sensor, in glass fibre cable, diameter 6x15 mm capsule. Suitable for temperature sensing in laboratory equipment and machinery, in heating applications and in the food field.



TECHNICAL DATA

TEMPERATURE RANGE	(0 +250)°C
MODEL	With connector
SENSOR	PT1000
CAPSULE	Diameter 6x15 mm
CABLE	Glass fibre
TERMINITIONS	Tin-plated, tips, connectors (other terminations available on request)
RESPONSE TIME	10 s in non-static liquid at 63.2% (depends on configuration)
IDENTIFICATION	Laser on cable, label (customizable)
DECLARATIONS OF CONFORMITY	CE MARKING, CONFLICT MINERALS, REACH, REACH, ROHS

**IVR04C**

# PROBES WITH SCREW CONNECTION

**PRODUCT FAMILY 15CR25**

Probe with connector, PT1000 sensor, in glass fibre cable, diameter 6x15 mm capsule. Suitable for temperature sensing in laboratory equipment and machinery, in heating applications and in the food field.



## TECHNICAL DATA

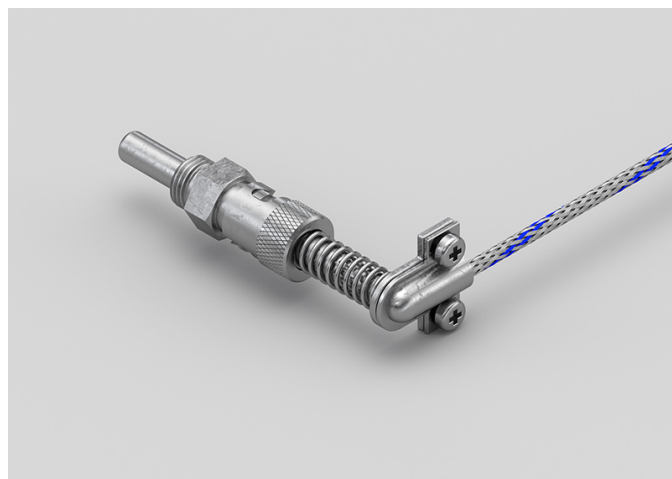
TEMPERATURE RANGE	(0 +250)°C
MODEL	With connector
SENSOR	PT1000
CAPSULE	Diameter 6x15 mm
CABLE	Glass fibre
TERMINITIONS	Tin-plated, tips, connectors (other terminations available on request)
RESPONSE TIME	10 s in non-static liquid at 63.2% (depends on configuration)
IDENTIFICATION	Laser on cable, label (customizable)
DECLARATIONS OF CONFORMITY	CE MARKING, CONFLICT MINERALS, REACH, REACH, ROHS

## JVM25C

# PROBES WITH 90 DEGREE BAYONET CONNECTION

## PRODUCT FAMILY 15CR30

Probe with connector, TCJ sensor, in glass fibre cable, diameter 6x60 mm capsule. Suitable for temperature sensing in laboratory equipment and machinery, in refrigeration and air conditioning applications, in heating applications, in the food field and in the industrial field.



## TECHNICAL DATA

TEMPERATURE RANGE	(0 +350)°C
MODEL	With connector
SENSOR	TCJ
CAPSULE	Diameter 6x60 mm
CABLE	Glass fibre
TERMINITIONS	Tin-plated, tips, connectors (other terminations available on request)
RESPONSE TIME	10 s in non-static liquid at 63.2% (depends on configuration)
IDENTIFICATION	Laser on cable, label (customizable)
DECLARATIONS OF CONFORMITY	CE MARKING, CONFLICT MINERALS, REACH, REACH, ROHS

JVM26C

PROBES WITH BAYONET CONNECTOR

PRODUCT FAMILY 15CR20

Probe with connector, TCJ sensor, in glass fibre cable, diameter 6x15 mm capsule. Suitable for temperature sensing in laboratory equipment and machinery, in heating applications and in the food field.



TECHNICAL DATA

TEMPERATURE RANGE	(0 +350)°C
MODEL	With connector
SENSOR	TCJ
CAPSULE	Diameter 6x15 mm
CABLE	Glass fibre
TERMINITIONS	Tin-plated, tips, connectors (other terminations available on request)
RESPONSE TIME	10 s in non-static liquid at 63.2% (depends on configuration)
IDENTIFICATION	Laser on cable, label (customizable)
DECLARATIONS OF CONFORMITY	CE MARKING, CONFLICT MINERALS, REACH, REACH, ROHS



JVM27C

# PROBES WITH SCREW CONNECTION

## PRODUCT FAMILY 15CR25

Probe with connector, TCJ sensor, in glass fibre cable, diameter 6x15 mm capsule. Suitable for temperature sensing in laboratory equipment and machinery, in heating applications, in the food field and in the industrial field.



## TECHNICAL DATA

TEMPERATURE RANGE	(0 +350)°C
MODEL	With connector
SENSOR	TCJ
CAPSULE	Diameter 6x15 mm
CABLE	Glass fibre
TERMINITIONS	Tin-plated, tips, connectors (other terminations available on request)
RESPONSE TIME	10 s in non-static liquid at 63.2% (depends on configuration)
IDENTIFICATION	Laser on cable, label (customizable)
DECLARATIONS OF CONFORMITY	CE MARKING, CONFLICT MINERALS, REACH, REACH, ROHS





**SACET S.R.L.**  
**Via del Candel, 55/D**  
**32100 Belluno (BL) Italy**

**C.F. E P.I. 00654590256**

**PHONE NUMBER +39 0437 33166**

**EMAIL [info@sacet-probes.com](mailto:info@sacet-probes.com)**