

# CATALOG

## TEMPERATURE PROBES

**APPLICATION** FOOD

**CATEGORY** PROCESSING AND PRESERVATION EQUIPMENT

# CATEGORY

## PROCESSING AND PRESERVATION EQUIPMENT

---

**AGB03C**

# PROBES WITH STANDARD METAL CAPSULE

**PRODUCT FAMILY 15CA05**

Probe with steel capsule, PTC sensor, in silicone cable, diameter 6x40 mm capsule. Suitable for temperature sensing in refrigeration and air conditioning applications, in air quality control applications, in heating applications and in the food field.



## TECHNICAL DATA

TEMPERATURE RANGE	(-50 +150)°C
MODEL	Steel capsule
SENSOR	PTC
CAPSULE	Diameter 6x40 mm
CABLE	Silicone
TERMINITIONS	Tin-plated, tips, connectors (other terminations available on request)
RESPONSE TIME	10 s in non-static liquid at 63.2% (depends on configuration)
IDENTIFICATION	Laser on cable, label (customizable)
DECLARATIONS OF CONFORMITY	CE MARKING, CONFLICT MINERALS, MOCA, REACH, REACH, ROHS

IVB03C

PROBES WITH STANDARD METAL CAPSULE

PRODUCT FAMILY 15CA05

Probe with steel capsule, PT1000 sensor, in glass fibre cable, diameter 6x40 mm capsule. Suitable for temperature sensing in refrigeration and air conditioning applications and in heating applications.



TECHNICAL DATA

TEMPERATURE RANGE	(0 +350)°C
MODEL	Steel capsule
SENSOR	PT1000
CAPSULE	Diameter 6x40 mm
CABLE	Glass fibre
TERMINITIONS	Tin-plated, tips, connectors (other terminations available on request)
RESPONSE TIME	10 s in non-static liquid at 63.2% (depends on configuration)
IDENTIFICATION	Laser on cable, label (customizable)
DECLARATIONS OF CONFORMITY	CE MARKING, CONFLICT MINERALS, MOCA, REACH, REACH, ROHS

**IVU00C**

# METAL CAPSULE PROBES WITH FLANGE

## PRODUCT FAMILY 15CA25

Contact probe with PT1000 sensor, in glass fibre cable, diameter 4x40 mm capsule. Suitable for temperature sensing in refrigeration and air conditioning applications, in air quality control applications, in heating applications, in the field of renewable energy and in the food field.



## TECHNICAL DATA

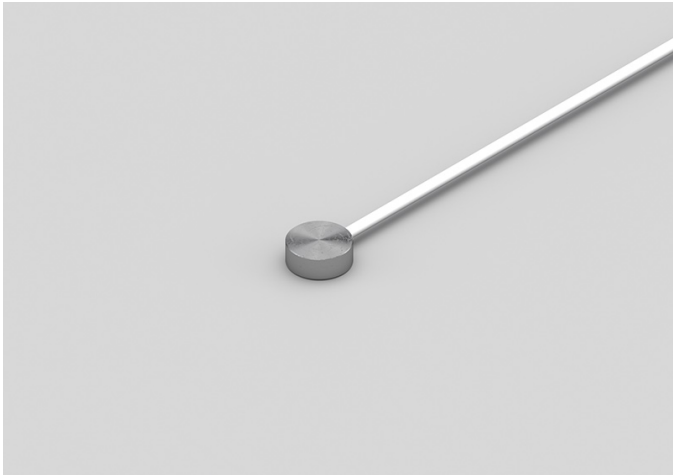
TEMPERATURE RANGE	(0 +350)°C
MODEL	Contact
SENSOR	PT1000
CAPSULE	Diameter 4x40 mm
CABLE	Glass fibre
TERMINITIONS	Tin-plated, tips, connectors (other terminations available on request)
RESPONSE TIME	10 s in non-static liquid at 63.2% (depends on configuration)
IDENTIFICATION	Laser on cable, label (customizable)
DECLARATIONS OF CONFORMITY	CE MARKING, CONFLICT MINERALS, REACH, REACH, ROHS

NTR00C

PROBES WITH CIRCULAR PAD

PRODUCT FAMILY 15CP05

Contact probe with NTC sensor, in Teflon cable, diameter 12x4.5 mm capsule. Suitable for temperature sensing in refrigeration and air conditioning applications and in the food field.



TECHNICAL DATA

TEMPERATURE RANGE	(0 +120)°C
MODEL	Contact
SENSOR	NTC
CAPSULE	Diameter 12x4.5 mm
CABLE	Teflon
TERMINITIONS	Tin-plated, tips, connectors (other terminations available on request)
RESPONSE TIME	10 s in non-static liquid at 63.2% (depends on configuration)
IDENTIFICATION	Laser on cable, label (customizable)
DECLARATIONS OF CONFORMITY	CE MARKING, CONFLICT MINERALS, REACH, REACH, ROHS

RVU00C

# PROBES WITH FAST METAL CAPSULE

## PRODUCT FAMILY 15CA10

Probe with steel capsule, NTC sensor, in glass fibre cable, diameter 4x40 mm capsule. Suitable for temperature sensing in heating applications and in the food field.



## TECHNICAL DATA

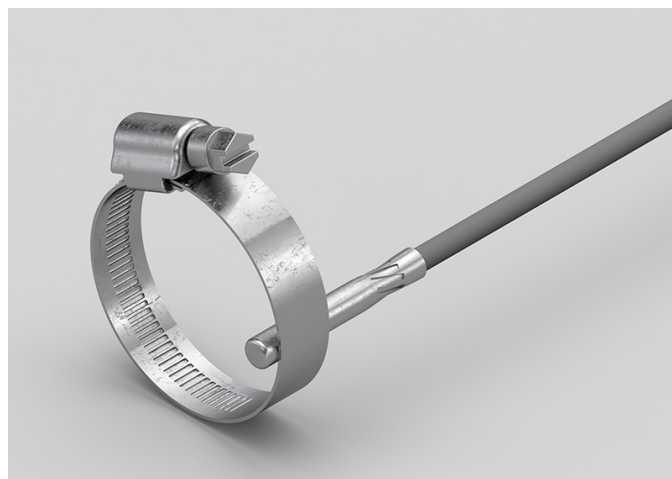
TEMPERATURE RANGE	(0 +300)°C
MODEL	Steel capsule
SENSOR	NTC
CAPSULE	Diameter 4x40 mm
CABLE	Glass fibre
TERMINITIONS	Tin-plated, tips, connectors (other terminations available on request)
RESPONSE TIME	10 s in non-static liquid at 63.2% (depends on configuration)
IDENTIFICATION	Laser on cable, label (customizable)
DECLARATIONS OF CONFORMITY	CE MARKING, CONFLICT MINERALS, MOCA, REACH, REACH, ROHS

**AGA06C**

# BRACELET PROBES WITH TRANSVERSAL STEEL BAND

**PRODUCT FAMILY 30GB36**

Probe with bracelet, PTC sensor, in silicone cable, diameter 6x30 mm capsule. Suitable for temperature sensing in laboratory equipment and machinery, in refrigeration and air conditioning applications, in heating applications, in the food field and in the industrial field.



## TECHNICAL DATA

TEMPERATURE RANGE	(-50 +150)°C
MODEL	Bracelet
SENSOR	PTC
CAPSULE	Diameter 6x30 mm
CABLE	Silicone
TERMINITIONS	Tin-plated, tips, connectors (other terminations available on request)
RESPONSE TIME	10 s in non-static liquid at 63.2% (depends on configuration)
IDENTIFICATION	Laser on cable, label (customizable)
DECLARATIONS OF CONFORMITY	CE MARKING, CONFLICT MINERALS, REACH, REACH, ROHS

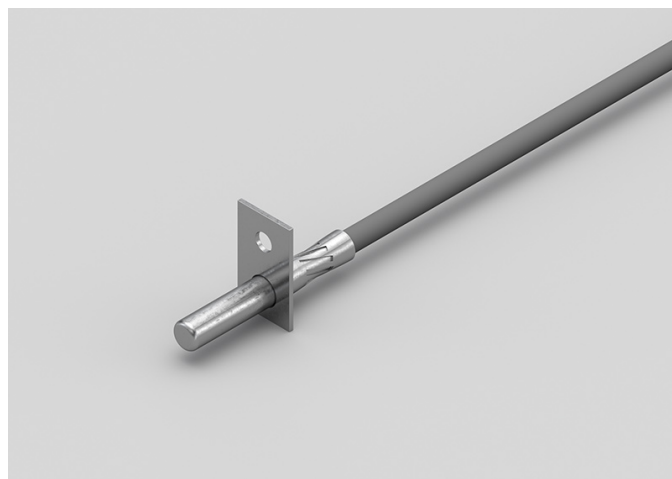


**AGB26C**

# METAL CAPSULE PROBES WITH FLANGE

**PRODUCT FAMILY 15CA25**

Contact probe with PTC sensor, in silicone cable, diameter 6x40 mm capsule. Suitable for temperature sensing in laboratory equipment and machinery, in refrigeration and air conditioning applications, in heating applications, in the food field and in the industrial field.



## TECHNICAL DATA

TEMPERATURE RANGE	(-50 +150)°C
MODEL	Contact
SENSOR	PTC
CAPSULE	Diameter 6x40 mm
CABLE	Silicone
TERMINITIONS	Tin-plated, tips, connectors (other terminations available on request)
RESPONSE TIME	10 s in non-static liquid at 63.2% (depends on configuration)
IDENTIFICATION	Laser on cable, label (customizable)
DECLARATIONS OF CONFORMITY	CE MARKING, CONFLICT MINERALS, REACH, REACH, ROHS

**AGB27C**

# STANDARD EYELET PROBES

## PRODUCT FAMILY 15C005

Contact probe with PTC sensor, in silicone cable, diameter 6x40 mm capsule. Suitable for temperature sensing in heating applications and in the food field.



## TECHNICAL DATA

TEMPERATURE RANGE	(-50 +150)°C
MODEL	Contact
SENSOR	PTC
CAPSULE	Diameter 6x40 mm
CABLE	Silicone
TERMINITIONS	Tin-plated, tips, connectors (other terminations available on request)
RESPONSE TIME	10 s in non-static liquid at 63.2% (depends on configuration)
IDENTIFICATION	Laser on cable, label (customizable)
DECLARATIONS OF CONFORMITY	CE MARKING, CONFLICT MINERALS, REACH, REACH, ROHS

## AGM03C

# PROBES WITH WELDED THREADED CONNECTION

## PRODUCT FAMILY 15CR05

Probe with connector, PTC sensor, in silicone cable, diameter 4x40 mm capsule. Suitable for temperature sensing in laboratory equipment and machinery, in refrigeration and air conditioning applications, in air quality control applications, in heating applications, in the field of renewable energy and in the food field.



## TECHNICAL DATA

TEMPERATURE RANGE	(-50 +150)°C
MODEL	With connector
SENSOR	PTC
CAPSULE	Diameter 4x40 mm
CABLE	Silicone
TERMINITIONS	Tin-plated, tips, connectors (other terminations available on request)
RESPONSE TIME	10 s in non-static liquid at 63.2% (depends on configuration)
IDENTIFICATION	Laser on cable, label (customizable)
DECLARATIONS OF CONFORMITY	CE MARKING, CONFLICT MINERALS, REACH, REACH, ROHS

**AGM04C**

# PROBES WITH SLIDING THREADED CONNECTION

**PRODUCT FAMILY 15CR10**

Probe with connector, PTC sensor, in silicone cable, diameter 4x40 mm capsule. Suitable for temperature sensing in laboratory equipment and machinery, in refrigeration and air conditioning applications, in air quality control applications, in heating applications, in the field of renewable energy and in the food field.



## TECHNICAL DATA

TEMPERATURE RANGE	(-50 +150)°C
MODEL	With connector
SENSOR	PTC
CAPSULE	Diameter 4x40 mm
CABLE	Silicone
TERMINITIONS	Tin-plated, tips, connectors (other terminations available on request)
RESPONSE TIME	10 s in non-static liquid at 63.2% (depends on configuration)
IDENTIFICATION	Laser on cable, label (customizable)
DECLARATIONS OF CONFORMITY	CE MARKING, CONFLICT MINERALS, REACH, REACH, ROHS

**AGR00C**

# PROBES WITH TAPERED METAL CAPSULE

**PRODUCT FAMILY 15CA20**

Probe with steel capsule, PTC sensor, in silicone cable, diameter 3X15 mm + diameter 6X40 mm capsule. Suitable for temperature sensing in air quality control applications.



## TECHNICAL DATA

TEMPERATURE RANGE	(-50 +150)°C
MODEL	Steel capsule
SENSOR	PTC
CAPSULE	Diameter 3X15 mm + Diameter 6X40 mm
CABLE	Silicone
TERMINITIONS	Tin-plated, tips, connectors (other terminations available on request)
RESPONSE TIME	10 s in non-static liquid at 63.2% (depends on configuration)
IDENTIFICATION	Laser on cable, label (customizable)
DECLARATIONS OF CONFORMITY	CE MARKING, CONFLICT MINERALS, REACH, REACH, ROHS

**AGU01C**

# STANDARD EYELET PROBES

## PRODUCT FAMILY 15C005

Contact probe with PTC sensor, in silicone cable, diameter 4x40 mm capsule. Suitable for temperature sensing in air quality control applications.



## TECHNICAL DATA

TEMPERATURE RANGE	(-50 +150)°C
MODEL	Contact
SENSOR	PTC
CAPSULE	Diameter 4x40 mm
CABLE	Silicone
TERMINITIONS	Tin-plated, tips, connectors (other terminations available on request)
RESPONSE TIME	10 s in non-static liquid at 63.2% (depends on configuration)
IDENTIFICATION	Laser on cable, label (customizable)
DECLARATIONS OF CONFORMITY	CE MARKING, CONFLICT MINERALS, REACH, REACH, ROHS

**AGU02C**

# METAL CAPSULE PROBES WITH FLANGE

**PRODUCT FAMILY 15CA25**

Contact probe with PTC sensor, in silicone cable, diameter 4x40 mm capsule. Suitable for temperature sensing in refrigeration and air conditioning applications, in air quality control applications, in heating applications, in the field of renewable energy and in the food field.



## TECHNICAL DATA

TEMPERATURE RANGE	(-50 +150)°C
MODEL	Contact
SENSOR	PTC
CAPSULE	Diameter 4x40 mm
CABLE	Silicone
TERMINITIONS	Tin-plated, tips, connectors (other terminations available on request)
RESPONSE TIME	10 s in non-static liquid at 63.2% (depends on configuration)
IDENTIFICATION	Laser on cable, label (customizable)
DECLARATIONS OF CONFORMITY	CE MARKING, CONFLICT MINERALS, REACH, REACH, ROHS

AGU04C

PROBES WITH FAST METAL CAPSULE

PRODUCT FAMILY 15CA10

Probe with steel capsule, PTC sensor, in silicone cable, diameter 4x40 mm capsule. Suitable for temperature sensing in refrigeration and air conditioning applications, in air quality control applications, in heating applications, in the field of renewable energy and in the food field.



TECHNICAL DATA

TEMPERATURE RANGE	(-50 +150)°C
MODEL	Steel capsule
SENSOR	PTC
CAPSULE	Diameter 4x40 mm
CABLE	Silicone
TERMINITIONS	Tin-plated, tips, connectors (other terminations available on request)
RESPONSE TIME	10 s in non-static liquid at 63.2% (depends on configuration)
IDENTIFICATION	Laser on cable, label (customizable)
DECLARATIONS OF CONFORMITY	CE MARKING, CONFLICT MINERALS, MOCA, REACH, REACH, ROHS

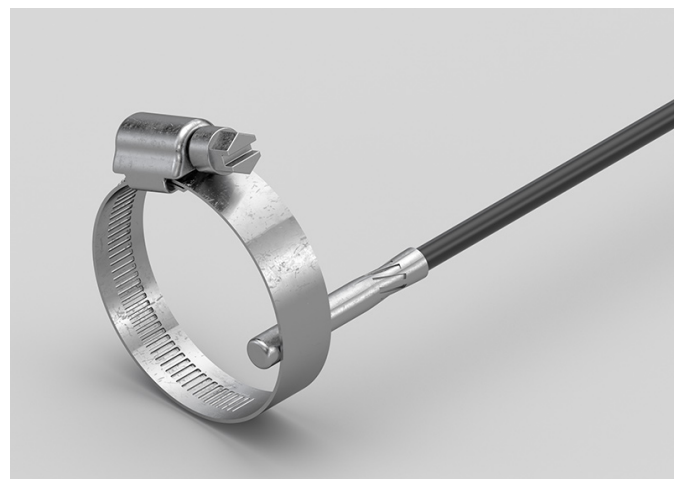


**APA13C**

# BRACELET PROBES WITH TRANSVERSAL STEEL BAND

**PRODUCT FAMILY 30GB36**

Probe with bracelet, PTC sensor, in PVC cable, diameter 6x30 mm capsule. Suitable for temperature sensing in heating applications and in the food field.



## TECHNICAL DATA

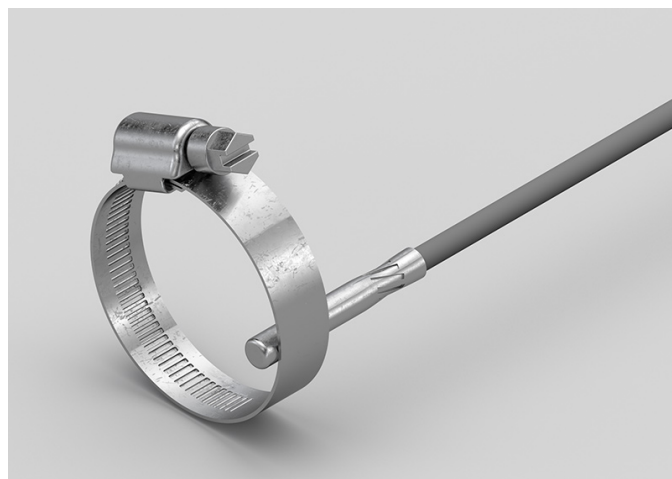
TEMPERATURE RANGE	(-30 +105)°C
MODEL	Bracelet
SENSOR	PTC
CAPSULE	Diameter 6x30 mm
CABLE	PVC
TERMINITIONS	Tin-plated, tips, connectors (other terminations available on request)
RESPONSE TIME	10 s in non-static liquid at 63.2% (depends on configuration)
IDENTIFICATION	Laser on cable, label (customizable)
DECLARATIONS OF CONFORMITY	CE MARKING, CONFLICT MINERALS, REACH, REACH, ROHS

**GGA02C**

# BRACELET PROBES WITH TRANSVERSAL STEEL BAND

## PRODUCT FAMILY 30GB36

Probe with bracelet, PT100 sensor, in silicone cable, diameter 6x30 mm capsule. Suitable for temperature sensing in refrigeration and air conditioning applications, in air quality control applications and in the food field.



## TECHNICAL DATA

TEMPERATURE RANGE	(-50 +200)°C
MODEL	Bracelet
SENSOR	PT100
CAPSULE	Diameter 6x30 mm
CABLE	Silicone
TERMINITIONS	Tin-plated, tips, connectors (other terminations available on request)
RESPONSE TIME	10 s in non-static liquid at 63.2% (depends on configuration)
IDENTIFICATION	Laser on cable, label (customizable)
DECLARATIONS OF CONFORMITY	CE MARKING, CONFLICT MINERALS, REACH, REACH, ROHS

GGB07C

# PROBES WITH STANDARD METAL CAPSULE

PRODUCT FAMILY 15CA05

Probe with steel capsule, PT100 sensor, in silicone cable, diameter 6x40 mm capsule. Suitable for temperature sensing in heating applications and in the food field.



## TECHNICAL DATA

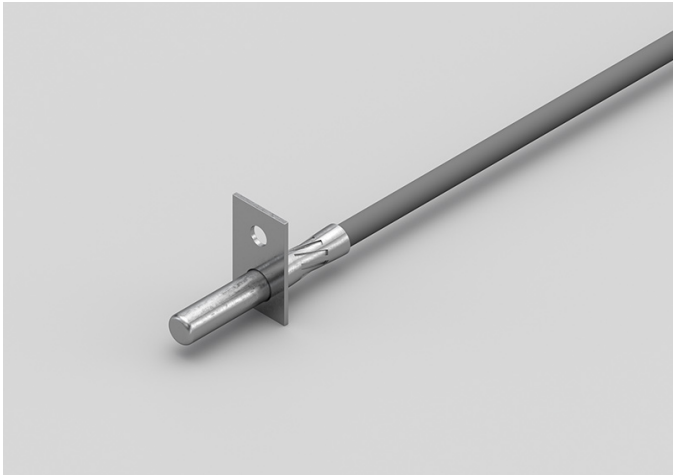
TEMPERATURE RANGE	(-50 +200)°C
MODEL	Steel capsule
SENSOR	PT100
CAPSULE	Diameter 6x40 mm
CABLE	Silicone
TERMINITIONS	Tin-plated, tips, connectors (other terminations available on request)
RESPONSE TIME	10 s in non-static liquid at 63.2% (depends on configuration)
IDENTIFICATION	Laser on cable, label (customizable)
DECLARATIONS OF CONFORMITY	CE MARKING, CONFLICT MINERALS, REACH, REACH, ROHS

GGB08C

# METAL CAPSULE PROBES WITH FLANGE

PRODUCT FAMILY 15CA25

Contact probe with PT100 sensor, in silicone cable, diameter 6x40 mm capsule. Suitable for temperature sensing in heating applications and in the food field.



## TECHNICAL DATA

TEMPERATURE RANGE	(-50 +200)°C
MODEL	Contact
SENSOR	PT100
CAPSULE	Diameter 6x40 mm
CABLE	Silicone
TERMINITIONS	Tin-plated, tips, connectors (other terminations available on request)
RESPONSE TIME	10 s in non-static liquid at 63.2% (depends on configuration)
IDENTIFICATION	Laser on cable, label (customizable)
DECLARATIONS OF CONFORMITY	CE MARKING, CONFLICT MINERALS, REACH, REACH, ROHS

GGB09C

STANDARD EYELET PROBES

PRODUCT FAMILY 15C005

Contact probe with PT100 sensor, in silicone cable, diameter 6x40 mm capsule. Suitable for temperature sensing in heating applications and in the food field.



TECHNICAL DATA

TEMPERATURE RANGE	(-50 +200)°C
MODEL	Contact
SENSOR	PT100
CAPSULE	Diameter 6x40 mm
CABLE	Silicone
TERMINITIONS	Tin-plated, tips, connectors (other terminations available on request)
RESPONSE TIME	10 s in non-static liquid at 63.2% (depends on configuration)
IDENTIFICATION	Laser on cable, label (customizable)
DECLARATIONS OF CONFORMITY	CE MARKING, CONFLICT MINERALS, REACH, REACH, ROHS

GGM08C

PROBES WITH SLIDING  
THREADED CONNECTION

PRODUCT FAMILY 15CR10

Probe with connector, PT100 sensor, in silicone cable, diameter 4x40 mm capsule. Suitable for temperature sensing in heating applications and in the food field.



TECHNICAL DATA

TEMPERATURE RANGE	(-50 +200)°C
MODEL	With connector
SENSOR	PT100
CAPSULE	Diameter 4x40 mm
CABLE	Silicone
TERMINITIONS	Tin-plated, tips, connectors (other terminations available on request)
RESPONSE TIME	10 s in non-static liquid at 63.2% (depends on configuration)
IDENTIFICATION	Laser on cable, label (customizable)
DECLARATIONS OF CONFORMITY	CE MARKING, CONFLICT MINERALS, REACH, REACH, ROHS

**GGM09C**

# PROBES WITH WELDED THREADED CONNECTION

**PRODUCT FAMILY 15CR05**

Probe with connector, PT100 sensor, in silicone cable, diameter 4x40 mm capsule. Suitable for temperature sensing in laboratory equipment and machinery, in refrigeration and air conditioning applications, in air quality control applications, in heating applications, in the field of renewable energy, in the food field and in the industrial field.



## TECHNICAL DATA

TEMPERATURE RANGE	(-50 +200)°C
MODEL	With connector
SENSOR	PT100
CAPSULE	Diameter 4x40 mm
CABLE	Silicone
TERMINITIONS	Tin-plated, tips, connectors (other terminations available on request)
RESPONSE TIME	10 s in non-static liquid at 63.2% (depends on configuration)
IDENTIFICATION	Laser on cable, label (customizable)
DECLARATIONS OF CONFORMITY	CE MARKING, CONFLICT MINERALS, REACH, REACH, ROHS

GG002C

# STANDARD EYELET PROBES

## PRODUCT FAMILY 15C005

Contact probe with PT100 sensor, in silicone cable, diameter 4x40 mm capsule. Suitable for temperature sensing in refrigeration and air conditioning applications, in air quality control applications, in heating applications, in the field of renewable energy and in the food field.



## TECHNICAL DATA

TEMPERATURE RANGE	(-50 +200)°C
MODEL	Contact
SENSOR	PT100
CAPSULE	Diameter 4x40 mm
CABLE	Silicone
TERMINITIONS	Tin-plated, tips, connectors (other terminations available on request)
RESPONSE TIME	10 s in non-static liquid at 63.2% (depends on configuration)
IDENTIFICATION	Laser on cable, label (customizable)
DECLARATIONS OF CONFORMITY	CE MARKING, CONFLICT MINERALS, REACH, REACH, ROHS



**GG003C**

# METAL CAPSULE PROBES WITH FLANGE

## PRODUCT FAMILY 15CA25

Contact probe with PT100 sensor, in silicone cable, diameter 4x40 mm capsule. Suitable for temperature sensing in refrigeration and air conditioning applications, in air quality control applications, in heating applications, in the field of renewable energy and in the food field.



## TECHNICAL DATA

TEMPERATURE RANGE	(-50 +200)°C
MODEL	Contact
SENSOR	PT100
CAPSULE	Diameter 4x40 mm
CABLE	Silicone
TERMINITIONS	Tin-plated, tips, connectors (other terminations available on request)
RESPONSE TIME	10 s in non-static liquid at 63.2% (depends on configuration)
IDENTIFICATION	Laser on cable, label (customizable)
DECLARATIONS OF CONFORMITY	CE MARKING, CONFLICT MINERALS, REACH, REACH, ROHS

GGR06C

PROBES WITH TAPERED METAL CAPSULE

PRODUCT FAMILY 15CA20

Probe with steel capsule, PT100 sensor, in silicone cable, diameter 3X15 mm + diameter 6X40 mm capsule. Suitable for temperature sensing in heating applications, in the field of renewable energy and in the food field.



TECHNICAL DATA

TEMPERATURE RANGE	(-50 +200)°C
MODEL	Steel capsule
SENSOR	PT100
CAPSULE	Diameter 3X15 mm + Diameter 6X40 mm
CABLE	Silicone
TERMINITIONS	Tin-plated, tips, connectors (other terminations available on request)
RESPONSE TIME	10 s in non-static liquid at 63.2% (depends on configuration)
IDENTIFICATION	Laser on cable, label (customizable)
DECLARATIONS OF CONFORMITY	CE MARKING, CONFLICT MINERALS, REACH, REACH, ROHS

**GGR07C**

# PROBES WITH TAPERED METAL CAPSULE

## PRODUCT FAMILY 15CA20

Probe with steel capsule, PT100 sensor, in silicone cable, diameter 3X15 mm + diameter 6X40 mm capsule. Suitable for temperature sensing in laboratory equipment and machinery, in refrigeration and air conditioning applications, in air quality control applications, in heating applications and in the food field.



## TECHNICAL DATA

TEMPERATURE RANGE	(-50 +200)°C
MODEL	Steel capsule
SENSOR	PT100
CAPSULE	Diameter 3X15 mm + Diameter 6X40 mm
CABLE	Silicone
TERMINATIONS	Tin-plated, tips, connectors (other terminations available on request)
RESPONSE TIME	10 s in non-static liquid at 63.2% (depends on configuration)
IDENTIFICATION	Laser on cable, label (customizable)
DECLARATIONS OF CONFORMITY	CE MARKING, CONFLICT MINERALS, REACH, REACH, ROHS

GGU02C

PROBES WITH FAST METAL CAPSULE

PRODUCT FAMILY 15CA10

Probe with steel capsule, PT100 sensor, in silicone cable, diameter 4x40 mm capsule. Suitable for temperature sensing in laboratory equipment and machinery, in refrigeration and air conditioning applications, in air quality control applications, in heating applications, in the field of renewable energy and in the food field.



TECHNICAL DATA

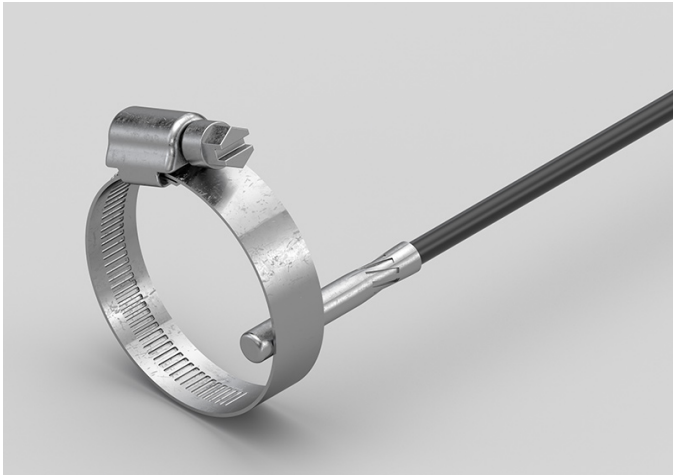
TEMPERATURE RANGE	(-50 +200)°C
MODEL	Steel capsule
SENSOR	PT100
CAPSULE	Diameter 4x40 mm
CABLE	Silicone
TERMINITIONS	Tin-plated, tips, connectors (other terminations available on request)
RESPONSE TIME	10 s in non-static liquid at 63.2% (depends on configuration)
IDENTIFICATION	Laser on cable, label (customizable)
DECLARATIONS OF CONFORMITY	CE MARKING, CONFLICT MINERALS, MOCA, REACH, REACH, ROHS

GPO04C

# BRACELET PROBES WITH TRANSVERSAL STEEL BAND

PRODUCT FAMILY 30GB36

Probe with bracelet, PT100 sensor, in PVC cable, diameter 6x30 mm capsule. Suitable for temperature sensing in heating applications and in the food field.



## TECHNICAL DATA

TEMPERATURE RANGE	(-30 +105)°C
MODEL	Bracelet
SENSOR	PT100
CAPSULE	Diameter 6x30 mm
CABLE	PVC
TERMINITIONS	Tin-plated, tips, connectors (other terminations available on request)
RESPONSE TIME	10 s in non-static liquid at 63.2% (depends on configuration)
IDENTIFICATION	Laser on cable, label (customizable)
DECLARATIONS OF CONFORMITY	CE MARKING, CONFLICT MINERALS, REACH, REACH, ROHS

**GTB00C**

# PROBES WITH STANDARD METAL CAPSULE

**PRODUCT FAMILY 15CA05**

Probe with steel capsule, PT100 sensor, in Teflon cable, diameter 6x40 mm capsule. Suitable for temperature sensing in laboratory equipment and machinery, in refrigeration and air conditioning applications, in air quality control applications, in heating applications, in the food field and in the industrial field.



## TECHNICAL DATA

TEMPERATURE RANGE	(-50 +250)°C
MODEL	Steel capsule
SENSOR	PT100
CAPSULE	Diameter 6x40 mm
CABLE	Teflon
TERMINITIONS	Tin-plated, tips, connectors (other terminations available on request)
RESPONSE TIME	10 s in non-static liquid at 63.2% (depends on configuration)
IDENTIFICATION	Laser on cable, label (customizable)
DECLARATIONS OF CONFORMITY	CE MARKING, CONFLICT MINERALS, MOCA, REACH, REACH, ROHS

GTM06C

PROBES WITH SLIDING  
THREADED CONNECTION

PRODUCT FAMILY 15CR10

Probe with connector, PT100 sensor, in Teflon cable, diameter 4x40 mm capsule. Suitable for temperature sensing in laboratory equipment and machinery, in refrigeration and air conditioning applications, in air quality control applications, in heating applications, in the field of renewable energy, in the food field and in the industrial field.



TECHNICAL DATA

TEMPERATURE RANGE	(-50 +250)°C
MODEL	With connector
SENSOR	PT100
CAPSULE	Diameter 4x40 mm
CABLE	Teflon
TERMINITIONS	Tin-plated, tips, connectors (other terminations available on request)
RESPONSE TIME	10 s in non-static liquid at 63.2% (depends on configuration)
IDENTIFICATION	Laser on cable, label (customizable)
DECLARATIONS OF CONFORMITY	CE MARKING, CONFLICT MINERALS, REACH, REACH, ROHS

GTM07C

# PROBES WITH WELDED THREADED CONNECTION

PRODUCT FAMILY 15CR05

Probe with connector, PT100 sensor, in Teflon cable, diameter 4x40 mm capsule. Suitable for temperature sensing in laboratory equipment and machinery, in refrigeration and air conditioning applications, in air quality control applications, in heating applications, in the field of renewable energy, in the food field and in the industrial field.



## TECHNICAL DATA

TEMPERATURE RANGE	(-50 +250)°C
MODEL	With connector
SENSOR	PT100
CAPSULE	Diameter 4x40 mm
CABLE	Teflon
TERMINITIONS	Tin-plated, tips, connectors (other terminations available on request)
RESPONSE TIME	10 s in non-static liquid at 63.2% (depends on configuration)
IDENTIFICATION	Laser on cable, label (customizable)
DECLARATIONS OF CONFORMITY	CE MARKING, CONFLICT MINERALS, REACH, REACH, ROHS



**GTO00C**

# METAL CAPSULE PROBES WITH FLANGE

## PRODUCT FAMILY 15CA25

Contact probe with PT100 sensor, in Teflon cable, diameter 6x40 mm capsule. Suitable for temperature sensing in refrigeration and air conditioning applications, in air quality control applications, in heating applications, in the food field and in the industrial field.



## TECHNICAL DATA

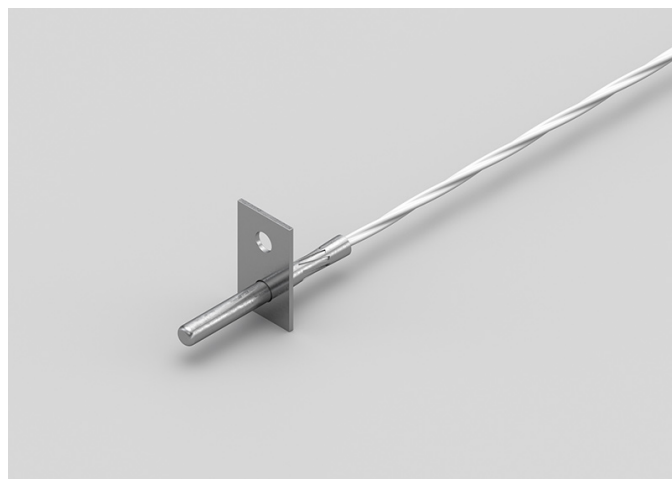
TEMPERATURE RANGE	(-50 +250)°C
MODEL	Contact
SENSOR	PT100
CAPSULE	Diameter 6x40 mm
CABLE	Teflon
TERMINITIONS	Tin-plated, tips, connectors (other terminations available on request)
RESPONSE TIME	10 s in non-static liquid at 63.2% (depends on configuration)
IDENTIFICATION	Laser on cable, label (customizable)
DECLARATIONS OF CONFORMITY	CE MARKING, CONFLICT MINERALS, REACH, REACH, ROHS

**GT001C**

# METAL CAPSULE PROBES WITH FLANGE

## PRODUCT FAMILY 15CA25

Contact probe with PT100 sensor, in Teflon cable, diameter 4x40 mm capsule. Suitable for temperature sensing in refrigeration and air conditioning applications, in air quality control applications, in heating applications, in the field of renewable energy, in the food field and in the industrial field.



## TECHNICAL DATA

TEMPERATURE RANGE	(-50 +250)°C
MODEL	Contact
SENSOR	PT100
CAPSULE	Diameter 4x40 mm
CABLE	Teflon
TERMINITIONS	Tin-plated, tips, connectors (other terminations available on request)
RESPONSE TIME	10 s in non-static liquid at 63.2% (depends on configuration)
IDENTIFICATION	Laser on cable, label (customizable)
DECLARATIONS OF CONFORMITY	CE MARKING, CONFLICT MINERALS, REACH, REACH, ROHS

**GTO02C**

# STANDARD EYELET PROBES

## PRODUCT FAMILY 15C005

Contact probe with PT100 sensor, in Teflon cable, diameter 6x40 mm capsule. Suitable for temperature sensing in refrigeration and air conditioning applications, in air quality control applications, in heating applications, in the food field and in the industrial field.



## TECHNICAL DATA

TEMPERATURE RANGE	(-50 +250)°C
MODEL	Contact
SENSOR	PT100
CAPSULE	Diameter 6x40 mm
CABLE	Teflon
TERMINITIONS	Tin-plated, tips, connectors (other terminations available on request)
RESPONSE TIME	10 s in non-static liquid at 63.2% (depends on configuration)
IDENTIFICATION	Laser on cable, label (customizable)
DECLARATIONS OF CONFORMITY	CE MARKING, CONFLICT MINERALS, REACH, REACH, ROHS

GT003C

# STANDARD EYELET PROBES

## PRODUCT FAMILY 15C005

Contact probe with PT100 sensor, in Teflon cable, diameter 4x40 mm capsule. Suitable for temperature sensing in refrigeration and air conditioning applications, in air quality control applications, in heating applications, in the field of renewable energy, in the food field and in the industrial field.



## TECHNICAL DATA

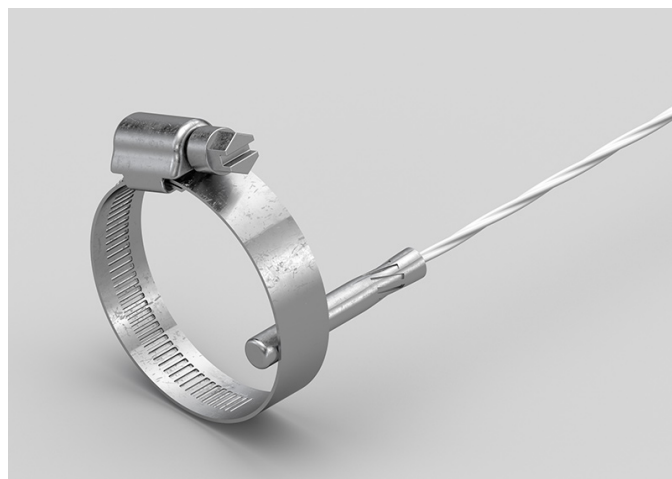
TEMPERATURE RANGE	(0 +250)°C
MODEL	Contact
SENSOR	PT100
CAPSULE	Diameter 4x40 mm
CABLE	Teflon
TERMINITIONS	Tin-plated, tips, connectors (other terminations available on request)
RESPONSE TIME	10 s in non-static liquid at 63.2% (depends on configuration)
IDENTIFICATION	Laser on cable, label (customizable)
DECLARATIONS OF CONFORMITY	CE MARKING, CONFLICT MINERALS, REACH, REACH, ROHS

**GTO04C**

# BRACELET PROBES WITH TRANSVERSAL STEEL BAND

## PRODUCT FAMILY 30GB36

Probe with bracelet, PT100 sensor, in Teflon cable, diameter 6x30 mm capsule. Suitable for temperature sensing in refrigeration and air conditioning applications, in air quality control applications, in heating applications, in the food field and in the industrial field.



## TECHNICAL DATA

TEMPERATURE RANGE	(-50 +250)°C
MODEL	Bracelet
SENSOR	PT100
CAPSULE	Diameter 6x30 mm
CABLE	Teflon
TERMINITIONS	Tin-plated, tips, connectors (other terminations available on request)
RESPONSE TIME	10 s in non-static liquid at 63.2% (depends on configuration)
IDENTIFICATION	Laser on cable, label (customizable)
DECLARATIONS OF CONFORMITY	CE MARKING, CONFLICT MINERALS, REACH, REACH, ROHS

**GTR01C**

# PROBES WITH CAPSULE PAD

**PRODUCT FAMILY 15CP10**

Contact probe with PT100 sensor, in Teflon cable, diameter 3x15 mm + pad 10 mm capsule. Suitable for temperature sensing in refrigeration and air conditioning applications, in air quality control applications, in heating applications, in the food field and in the industrial field.



## TECHNICAL DATA

TEMPERATURE RANGE	(-50 +250)°C
MODEL	Contact
SENSOR	PT100
CAPSULE	Diameter 3x15 mm + pad 10 mm
CABLE	Teflon
TERMINITIONS	Tin-plated, tips, connectors (other terminations available on request)
RESPONSE TIME	10 s in non-static liquid at 63.2% (depends on configuration)
IDENTIFICATION	Laser on cable, label (customizable)
DECLARATIONS OF CONFORMITY	CE MARKING, CONFLICT MINERALS, REACH, REACH, ROHS

**GTR02C**

# PROBES WITH TAPERED METAL CAPSULE

**PRODUCT FAMILY 15CA20**

Probe with steel capsule, PT100 sensor, in Teflon cable, diameter 3X15 mm + diameter 6X40 mm capsule. Suitable for temperature sensing in refrigeration and air conditioning applications, in air quality control applications, in heating applications, in the food field and in the industrial field.



## TECHNICAL DATA

TEMPERATURE RANGE	(-50 +250)°C
MODEL	Steel capsule
SENSOR	PT100
CAPSULE	Diameter 3X15 mm + Diameter 6X40 mm
CABLE	Teflon
TERMINITIONS	Tin-plated, tips, connectors (other terminations available on request)
RESPONSE TIME	10 s in non-static liquid at 63.2% (depends on configuration)
IDENTIFICATION	Laser on cable, label (customizable)
DECLARATIONS OF CONFORMITY	CE MARKING, CONFLICT MINERALS, REACH, REACH, ROHS

GTU01C

# PROBES WITH FAST METAL CAPSULE

PRODUCT FAMILY 15CA10

Probe with steel capsule, PT100 sensor, in Teflon cable, diameter 4x40 mm capsule. Suitable for temperature sensing in laboratory equipment and machinery, in refrigeration and air conditioning applications, in air quality control applications, in heating applications, in the field of renewable energy, in the food field and in the industrial field.



## TECHNICAL DATA

TEMPERATURE RANGE	(-50 +250)°C
MODEL	Steel capsule
SENSOR	PT100
CAPSULE	Diameter 4x40 mm
CABLE	Teflon
TERMINITIONS	Tin-plated, tips, connectors (other terminations available on request)
RESPONSE TIME	10 s in non-static liquid at 63.2% (depends on configuration)
IDENTIFICATION	Laser on cable, label (customizable)
DECLARATIONS OF CONFORMITY	CE MARKING, CONFLICT MINERALS, MOCA, REACH, REACH, ROHS



GVB03C

# PROBES WITH STANDARD METAL CAPSULE

PRODUCT FAMILY 15CA05

Probe with steel capsule, PT100 sensor, in glass fibre cable, diameter 6x40 mm capsule. Suitable for temperature sensing in laboratory equipment and machinery, in refrigeration and air conditioning applications, in air quality control applications, in heating applications and in the food field.



## TECHNICAL DATA

TEMPERATURE RANGE	(0 +350)°C
MODEL	Steel capsule
SENSOR	PT100
CAPSULE	Diameter 6x40 mm
CABLE	Glass fibre
TERMINITIONS	Tin-plated, tips, connectors (other terminations available on request)
RESPONSE TIME	10 s in non-static liquid at 63.2% (depends on configuration)
IDENTIFICATION	Laser on cable, label (customizable)
DECLARATIONS OF CONFORMITY	CE MARKING, CONFLICT MINERALS, MOCA, REACH, REACH, ROHS

**GVM03C**

# PROBES WITH SLIDING THREADED CONNECTION

**PRODUCT FAMILY 15CR10**

Probe with connector, PT100 sensor, in glass fibre cable, diameter 4x40 mm capsule. Suitable for temperature sensing in laboratory equipment and machinery, in refrigeration and air conditioning applications, in air quality control applications, in heating applications, in the field of renewable energy, in the food field and in the industrial field.



## TECHNICAL DATA

TEMPERATURE RANGE	(0 +250)°C
MODEL	With connector
SENSOR	PT100
CAPSULE	Diameter 4x40 mm
CABLE	Glass fibre
TERMINITIONS	Tin-plated, tips, connectors (other terminations available on request)
RESPONSE TIME	10 s in non-static liquid at 63.2% (depends on configuration)
IDENTIFICATION	Laser on cable, label (customizable)
DECLARATIONS OF CONFORMITY	CE MARKING, CONFLICT MINERALS, REACH, REACH, ROHS

GVM04C

PROBES WITH WELDED  
THREADED CONNECTION

PRODUCT FAMILY 15CR05

Probe with connector, PT100 sensor, in glass fibre cable, diameter 4x40 mm capsule. Suitable for temperature sensing in laboratory equipment and machinery, in refrigeration and air conditioning applications, in air quality control applications, in heating applications, in the field of renewable energy, in the food field and in the industrial field.



TECHNICAL DATA

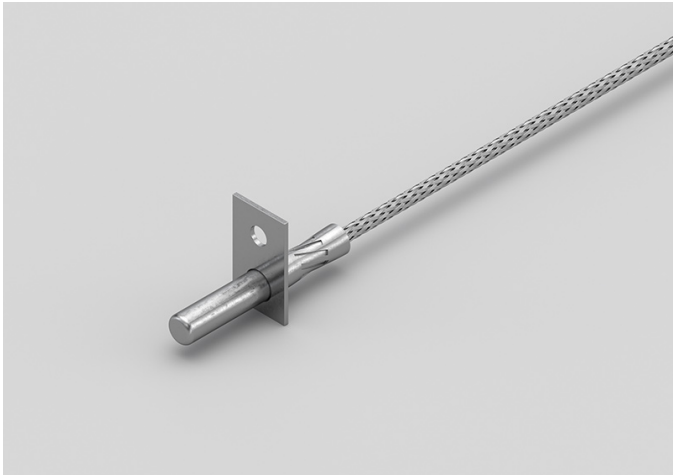
TEMPERATURE RANGE	(0 +250)°C
MODEL	With connector
SENSOR	PT100
CAPSULE	Diameter 4x40 mm
CABLE	Glass fibre
TERMINITIONS	Tin-plated, tips, connectors (other terminations available on request)
RESPONSE TIME	10 s in non-static liquid at 63.2% (depends on configuration)
IDENTIFICATION	Laser on cable, label (customizable)
DECLARATIONS OF CONFORMITY	CE MARKING, CONFLICT MINERALS, REACH, REACH, ROHS

GVO01C

# METAL CAPSULE PROBES WITH FLANGE

PRODUCT FAMILY 15CA25

Contact probe with PT100 sensor, in glass fibre cable, diameter 6x40 mm capsule. Suitable for temperature sensing in refrigeration and air conditioning applications, in air quality control applications, in heating applications and in the food field.



## TECHNICAL DATA

TEMPERATURE RANGE	(0 +350)°C
MODEL	Contact
SENSOR	PT100
CAPSULE	Diameter 6x40 mm
CABLE	Glass fibre
TERMINITIONS	Tin-plated, tips, connectors (other terminations available on request)
RESPONSE TIME	10 s in non-static liquid at 63.2% (depends on configuration)
IDENTIFICATION	Laser on cable, label (customizable)
DECLARATIONS OF CONFORMITY	CE MARKING, CONFLICT MINERALS, REACH, REACH, ROHS

GVO02B

# EYELET RING PROBES

## PRODUCT FAMILY 15C010

Contact probe with PT100 sensor, in glass fibre cable, plate-shaped capsule. Suitable for temperature sensing in refrigeration and air conditioning applications, in air quality control applications and in the food field.



## TECHNICAL DATA

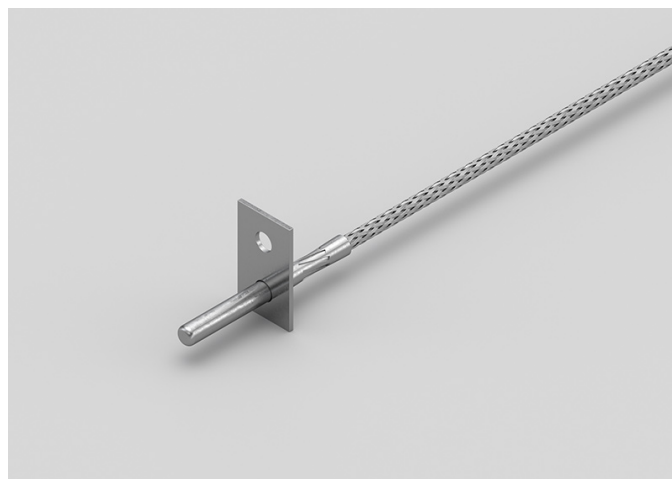
TEMPERATURE RANGE	(0 +250)°C
MODEL	Contact
SENSOR	PT100
CAPSULE	Plate
CABLE	Glass fibre
TERMINITIONS	Tin-plated, tips, connectors (other terminations available on request)
RESPONSE TIME	10 s in non-static liquid at 63.2% (depends on configuration)
IDENTIFICATION	Laser on cable, label (customizable)
DECLARATIONS OF CONFORMITY	CE MARKING, CONFLICT MINERALS, REACH, REACH, ROHS

**GVO02C**

# METAL CAPSULE PROBES WITH FLANGE

## PRODUCT FAMILY 15CA25

Contact probe with PT100 sensor, in glass fibre cable, diameter 4x40 mm capsule. Suitable for temperature sensing in refrigeration and air conditioning applications, in air quality control applications and in the food field.



## TECHNICAL DATA

TEMPERATURE RANGE	(0 +350)°C
MODEL	Contact
SENSOR	PT100
CAPSULE	Diameter 4x40 mm
CABLE	Glass fibre
TERMINITIONS	Tin-plated, tips, connectors (other terminations available on request)
RESPONSE TIME	10 s in non-static liquid at 63.2% (depends on configuration)
IDENTIFICATION	Laser on cable, label (customizable)
DECLARATIONS OF CONFORMITY	CE MARKING, CONFLICT MINERALS, REACH, REACH, ROHS

GVO03C

# STANDARD EYELET PROBES

## PRODUCT FAMILY 15C005

Contact probe with PT100 sensor, in glass fibre cable, diameter 6x40 mm capsule. Suitable for temperature sensing in refrigeration and air conditioning applications, in air quality control applications and in the food field.



## TECHNICAL DATA

TEMPERATURE RANGE	(0 +350)°C
MODEL	Contact
SENSOR	PT100
CAPSULE	Diameter 6x40 mm
CABLE	Glass fibre
TERMINITIONS	Tin-plated, tips, connectors (other terminations available on request)
RESPONSE TIME	10 s in non-static liquid at 63.2% (depends on configuration)
IDENTIFICATION	Laser on cable, label (customizable)
DECLARATIONS OF CONFORMITY	CE MARKING, CONFLICT MINERALS, REACH, REACH, ROHS

GVO04C

# STANDARD EYELET PROBES

## PRODUCT FAMILY 15C005

Contact probe with PT100 sensor, in glass fibre cable, diameter 4x40 mm capsule. Suitable for temperature sensing in refrigeration and air conditioning applications, in air quality control applications, in heating applications and in the food field.



## TECHNICAL DATA

TEMPERATURE RANGE	(0 +350)°C
MODEL	Contact
SENSOR	PT100
CAPSULE	Diameter 4x40 mm
CABLE	Glass fibre
TERMINITIONS	Tin-plated, tips, connectors (other terminations available on request)
RESPONSE TIME	10 s in non-static liquid at 63.2% (depends on configuration)
IDENTIFICATION	Laser on cable, label (customizable)
DECLARATIONS OF CONFORMITY	CE MARKING, CONFLICT MINERALS, REACH, REACH, ROHS

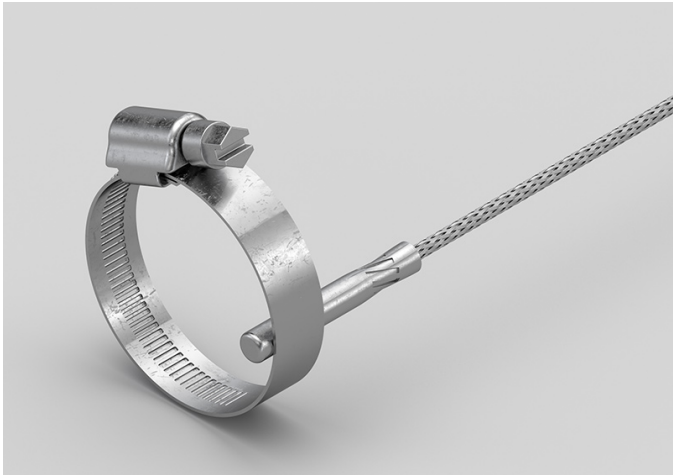


GVO05C

# BRACELET PROBES WITH TRANSVERSAL STEEL BAND

## PRODUCT FAMILY 30GB36

Probe with bracelet, PT100 sensor, in glass fibre cable, diameter 6x30 mm capsule. Suitable for temperature sensing in heating applications and in the food field.



## TECHNICAL DATA

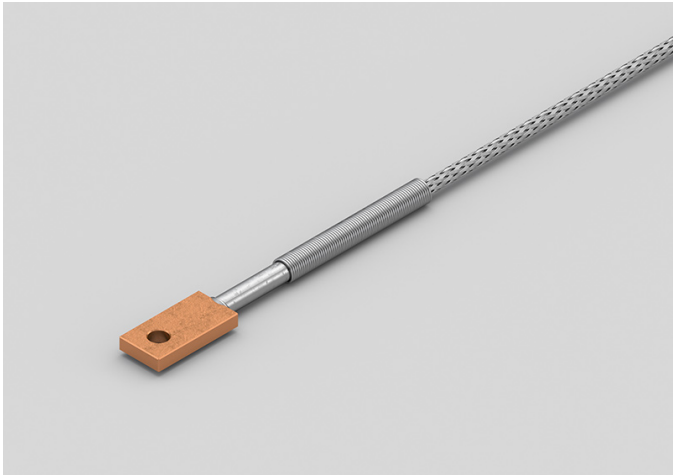
TEMPERATURE RANGE	(0 +350)°C
MODEL	Bracelet
SENSOR	PT100
CAPSULE	Diameter 6x30 mm
CABLE	Glass fibre
TERMINITIONS	Tin-plated, tips, connectors (other terminations available on request)
RESPONSE TIME	10 s in non-static liquid at 63.2% (depends on configuration)
IDENTIFICATION	Laser on cable, label (customizable)
DECLARATIONS OF CONFORMITY	CE MARKING, CONFLICT MINERALS, REACH, REACH, ROHS

GVO06C

# RECTANGULAR PLATE EYELET PROBES

## PRODUCT FAMILY 15C015

Contact probe with PT100 sensor, in glass fibre cable, plate-shaped capsule. Suitable for temperature sensing in heating applications, in the field of renewable energy and in the food field.



## TECHNICAL DATA

TEMPERATURE RANGE	(0 +250)°C
MODEL	Contact
SENSOR	PT100
CAPSULE	Plate
CABLE	Glass fibre
TERMINITIONS	Tin-plated, tips, connectors (other terminations available on request)
RESPONSE TIME	10 s in non-static liquid at 63.2% (depends on configuration)
IDENTIFICATION	Laser on cable, label (customizable)
DECLARATIONS OF CONFORMITY	CE MARKING, CONFLICT MINERALS, REACH, REACH, ROHS

GVR06C

PROBES WITH TAPERED METAL CAPSULE

PRODUCT FAMILY 15CA20

Probe with steel capsule, PT100 sensor, in glass fibre cable, diameter 3X15 mm + diameter 6X40 mm capsule. Suitable for temperature sensing in heating applications, in the field of renewable energy and in the food field.



TECHNICAL DATA

TEMPERATURE RANGE	(0 +350)°C
MODEL	Steel capsule
SENSOR	PT100
CAPSULE	Diameter 3X15 mm + Diameter 6X40 mm
CABLE	Glass fibre
TERMINITIONS	Tin-plated, tips, connectors (other terminations available on request)
RESPONSE TIME	10 s in non-static liquid at 63.2% (depends on configuration)
IDENTIFICATION	Laser on cable, label (customizable)
DECLARATIONS OF CONFORMITY	CE MARKING, CONFLICT MINERALS, REACH, REACH, ROHS

**GVR07C**

# PROBES WITH TAPERED METAL CAPSULE

## PRODUCT FAMILY 15CA20

Probe with steel capsule, PT100 sensor, in glass fibre cable, diameter 3X15 mm + diameter 6X40 mm capsule. Suitable for temperature sensing in laboratory equipment and machinery, in refrigeration and air conditioning applications, in air quality control applications, in heating applications and in the food field.



## TECHNICAL DATA

TEMPERATURE RANGE	(0 +350)°C
MODEL	Steel capsule
SENSOR	PT100
CAPSULE	Diameter 3X15 mm + Diameter 6X40 mm
CABLE	Glass fibre
TERMINITIONS	Tin-plated, tips, connectors (other terminations available on request)
RESPONSE TIME	10 s in non-static liquid at 63.2% (depends on configuration)
IDENTIFICATION	Laser on cable, label (customizable)
DECLARATIONS OF CONFORMITY	CE MARKING, CONFLICT MINERALS, REACH, REACH, ROHS

GVU07C

# PROBES WITH FAST METAL CAPSULE

## PRODUCT FAMILY 15CA10

Probe with steel capsule, PT100 sensor, in glass fibre cable, diameter 4x40 mm capsule. Suitable for temperature sensing in laboratory equipment and machinery, in refrigeration and air conditioning applications, in air quality control applications, in heating applications, in the field of renewable energy and in the food field.



## TECHNICAL DATA

TEMPERATURE RANGE	(0 +350)°C
MODEL	Steel capsule
SENSOR	PT100
CAPSULE	Diameter 4x40 mm
CABLE	Glass fibre
TERMINITIONS	Tin-plated, tips, connectors (other terminations available on request)
RESPONSE TIME	10 s in non-static liquid at 63.2% (depends on configuration)
IDENTIFICATION	Laser on cable, label (customizable)
DECLARATIONS OF CONFORMITY	CE MARKING, CONFLICT MINERALS, MOCA, REACH, REACH, ROHS

IGB01C

PROBES WITH STANDARD METAL CAPSULE

PRODUCT FAMILY 15CA05

Probe with steel capsule, PT1000 sensor, in silicone cable, diameter 6x40 mm capsule. Suitable for temperature sensing in refrigeration and air conditioning applications, in heating applications, in the field of renewable energy, in the food field and in the industrial field.



TECHNICAL DATA

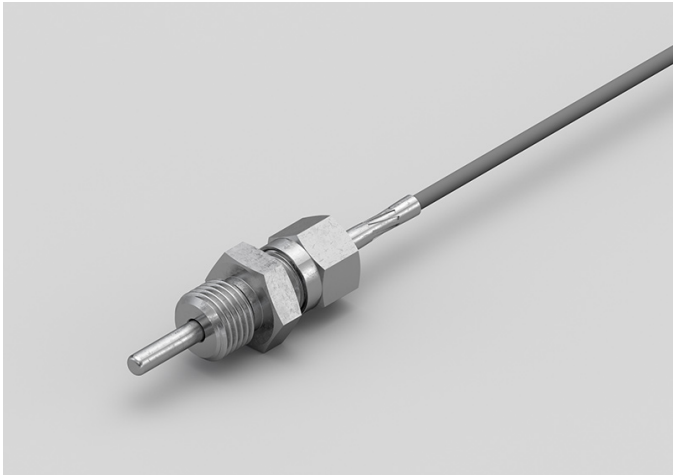
TEMPERATURE RANGE	(-50 +200)°C
MODEL	Steel capsule
SENSOR	PT1000
CAPSULE	Diameter 6x40 mm
CABLE	Silicone
TERMINITIONS	Tin-plated, tips, connectors (other terminations available on request)
RESPONSE TIME	10 s in non-static liquid at 63.2% (depends on configuration)
IDENTIFICATION	Laser on cable, label (customizable)
DECLARATIONS OF CONFORMITY	CE MARKING, CONFLICT MINERALS, MOCA, REACH, REACH, ROHS

IGM06C

PROBES WITH SLIDING  
THREADED CONNECTION

PRODUCT FAMILY 15CR10

Probe with connector, PT1000 sensor, in silicone cable, diameter 4x40 mm capsule. Suitable for temperature sensing in heating applications, in the field of renewable energy and in the food field.



TECHNICAL DATA

TEMPERATURE RANGE	(-50 +200)°C
MODEL	With connector
SENSOR	PT1000
CAPSULE	Diameter 4x40 mm
CABLE	Silicone
TERMINITIONS	Tin-plated, tips, connectors (other terminations available on request)
RESPONSE TIME	10 s in non-static liquid at 63.2% (depends on configuration)
IDENTIFICATION	Laser on cable, label (customizable)
DECLARATIONS OF CONFORMITY	CE MARKING, CONFLICT MINERALS, REACH, REACH, ROHS

IGM07C

STANDARD EYELET PROBES

PRODUCT FAMILY 15C005

Contact probe with PT1000 sensor, in silicone cable, diameter 4x40 mm capsule. Suitable for temperature sensing in refrigeration and air conditioning applications, in air quality control applications and in the food field.



TECHNICAL DATA

TEMPERATURE RANGE	(-50 +200)°C
MODEL	Contact
SENSOR	PT1000
CAPSULE	Diameter 4x40 mm
CABLE	Silicone
TERMINITIONS	Tin-plated, tips, connectors (other terminations available on request)
RESPONSE TIME	10 s in non-static liquid at 63.2% (depends on configuration)
IDENTIFICATION	Laser on cable, label (customizable)
DECLARATIONS OF CONFORMITY	CE MARKING, CONFLICT MINERALS, REACH, REACH, ROHS

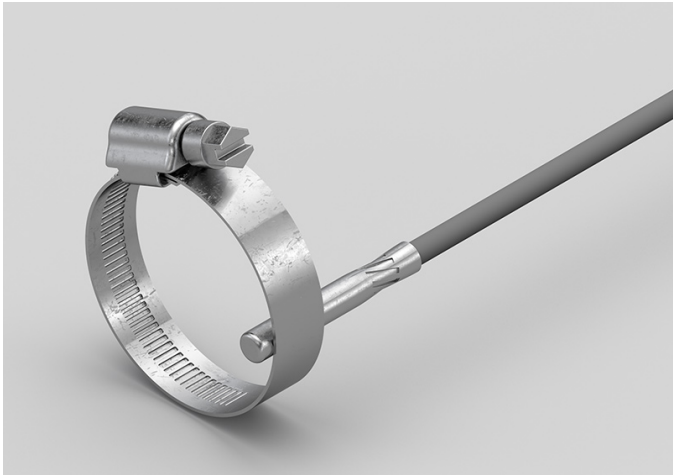


IG003C

# BRACELET PROBES WITH TRANSVERSAL STEEL BAND

PRODUCT FAMILY 30GB36

Probe with bracelet, PT1000 sensor, in silicone cable, diameter 6x30 mm capsule. Suitable for temperature sensing in heating applications and in the food field.



## TECHNICAL DATA

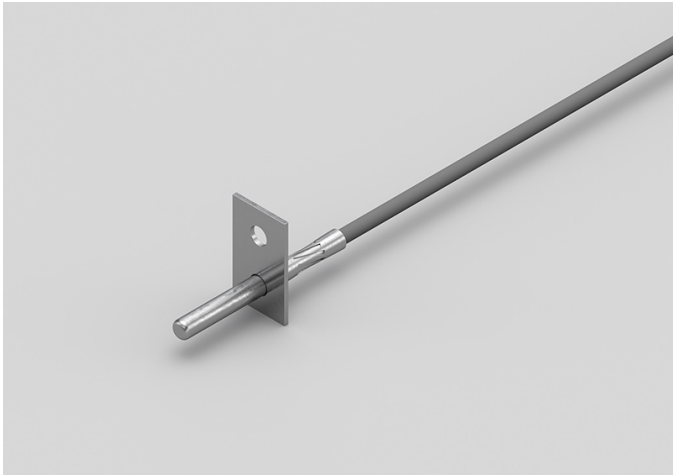
TEMPERATURE RANGE	(-50 +200)°C
MODEL	Bracelet
SENSOR	PT1000
CAPSULE	Diameter 6x30 mm
CABLE	Silicone
TERMINITIONS	Tin-plated, tips, connectors (other terminations available on request)
RESPONSE TIME	10 s in non-static liquid at 63.2% (depends on configuration)
IDENTIFICATION	Laser on cable, label (customizable)
DECLARATIONS OF CONFORMITY	CE MARKING, CONFLICT MINERALS, REACH, REACH, ROHS

IG004C

# METAL CAPSULE PROBES WITH FLANGE

PRODUCT FAMILY 15CA25

Contact probe with PT1000 sensor, in silicone cable, diameter 4x40 mm capsule. Suitable for temperature sensing in heating applications and in the food field.



## TECHNICAL DATA

TEMPERATURE RANGE	(-50 +200)°C
MODEL	Contact
SENSOR	PT1000
CAPSULE	Diameter 4x40 mm
CABLE	Silicone
TERMINITIONS	Tin-plated, tips, connectors (other terminations available on request)
RESPONSE TIME	10 s in non-static liquid at 63.2% (depends on configuration)
IDENTIFICATION	Laser on cable, label (customizable)
DECLARATIONS OF CONFORMITY	CE MARKING, CONFLICT MINERALS, REACH, REACH, ROHS

IG005C

STANDARD EYELET PROBES

PRODUCT FAMILY 15C005

Contact probe with PT1000 sensor, in silicone cable, diameter 4x40 mm capsule. Suitable for temperature sensing in heating applications and in the food field.



TECHNICAL DATA

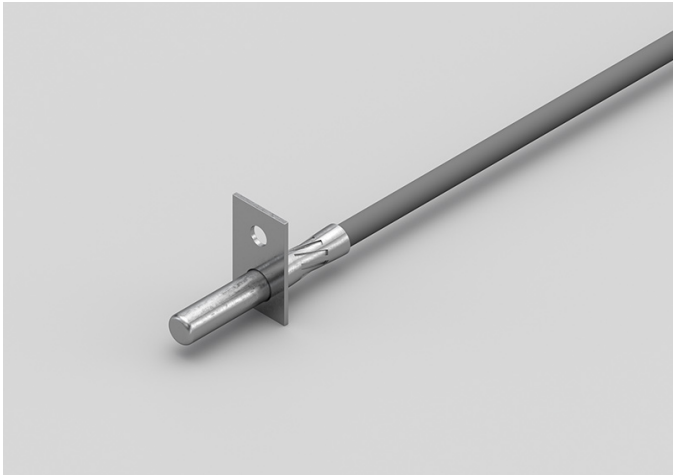
TEMPERATURE RANGE	(-50 +200)°C
MODEL	Contact
SENSOR	PT1000
CAPSULE	Diameter 4x40 mm
CABLE	Silicone
TERMINITIONS	Tin-plated, tips, connectors (other terminations available on request)
RESPONSE TIME	10 s in non-static liquid at 63.2% (depends on configuration)
IDENTIFICATION	Laser on cable, label (customizable)
DECLARATIONS OF CONFORMITY	CE MARKING, CONFLICT MINERALS, REACH, REACH, ROHS

IG006C

# METAL CAPSULE PROBES WITH FLANGE

PRODUCT FAMILY 15CA25

Contact probe with PT1000 sensor, in silicone cable, diameter 6x40 mm capsule. Suitable for temperature sensing in heating applications and in the food field.



## TECHNICAL DATA

TEMPERATURE RANGE	(-50 +200)°C
MODEL	Contact
SENSOR	PT1000
CAPSULE	Diameter 6x40 mm
CABLE	Silicone
TERMINITIONS	Tin-plated, tips, connectors (other terminations available on request)
RESPONSE TIME	10 s in non-static liquid at 63.2% (depends on configuration)
IDENTIFICATION	Laser on cable, label (customizable)
DECLARATIONS OF CONFORMITY	CE MARKING, CONFLICT MINERALS, REACH, REACH, ROHS

**IG007C**

# STANDARD EYELET PROBES

## PRODUCT FAMILY 15C005

Contact probe with PT1000 sensor, in silicone cable, diameter 6x40 mm capsule. Suitable for temperature sensing in refrigeration and air conditioning applications, in heating applications, in the food field and in the industrial field.



## TECHNICAL DATA

TEMPERATURE RANGE	(-50 +200)°C
MODEL	Contact
SENSOR	PT1000
CAPSULE	Diameter 6x40 mm
CABLE	Silicone
TERMINITIONS	Tin-plated, tips, connectors (other terminations available on request)
RESPONSE TIME	10 s in non-static liquid at 63.2% (depends on configuration)
IDENTIFICATION	Laser on cable, label (customizable)
DECLARATIONS OF CONFORMITY	CE MARKING, CONFLICT MINERALS, REACH, REACH, ROHS

## IGR03C

# PROBES WITH TAPERED METAL CAPSULE

## PRODUCT FAMILY 15CA20

Probe with steel capsule, PT1000 sensor, in silicone cable, diameter 3X15 mm + diameter 6X40 mm capsule. Suitable for temperature sensing in refrigeration and air conditioning applications, in heating applications, in the food field and in the industrial field.



## TECHNICAL DATA

TEMPERATURE RANGE	(-50 +200)°C
MODEL	Steel capsule
SENSOR	PT1000
CAPSULE	Diameter 3X15 mm + Diameter 6X40 mm
CABLE	Silicone
TERMINITIONS	Tin-plated, tips, connectors (other terminations available on request)
RESPONSE TIME	10 s in non-static liquid at 63.2% (depends on configuration)
IDENTIFICATION	Laser on cable, label (customizable)
DECLARATIONS OF CONFORMITY	CE MARKING, CONFLICT MINERALS, REACH, REACH, ROHS

**IGR04C**

# PROBES WITH TAPERED METAL CAPSULE

**PRODUCT FAMILY 15CA20**

Probe with steel capsule, PT1000 sensor, in silicone cable, diameter 3X15 mm + diameter 6X40 mm capsule. Suitable for temperature sensing in heating applications and in the food field.



## TECHNICAL DATA

TEMPERATURE RANGE	(-50 +200)°C
MODEL	Steel capsule
SENSOR	PT1000
CAPSULE	Diameter 3X15 mm + Diameter 6X40 mm
CABLE	Silicone
TERMINATIONS	Tin-plated, tips, connectors (other terminations available on request)
RESPONSE TIME	10 s in non-static liquid at 63.2% (depends on configuration)
IDENTIFICATION	Laser on cable, label (customizable)
DECLARATIONS OF CONFORMITY	CE MARKING, CONFLICT MINERALS, REACH, REACH, ROHS

IGU02C

PROBES WITH FAST METAL CAPSULE

PRODUCT FAMILY 15CA10

Probe with steel capsule, PT1000 sensor, in silicone cable, diameter 4x40 mm capsule. Suitable for temperature sensing in heating applications and in the food field.



TECHNICAL DATA

TEMPERATURE RANGE	(-50 +200)°C
MODEL	Steel capsule
SENSOR	PT1000
CAPSULE	Diameter 4x40 mm
CABLE	Silicone
TERMINITIONS	Tin-plated, tips, connectors (other terminations available on request)
RESPONSE TIME	10 s in non-static liquid at 63.2% (depends on configuration)
IDENTIFICATION	Laser on cable, label (customizable)
DECLARATIONS OF CONFORMITY	CE MARKING, CONFLICT MINERALS, MOCA, REACH, REACH, ROHS

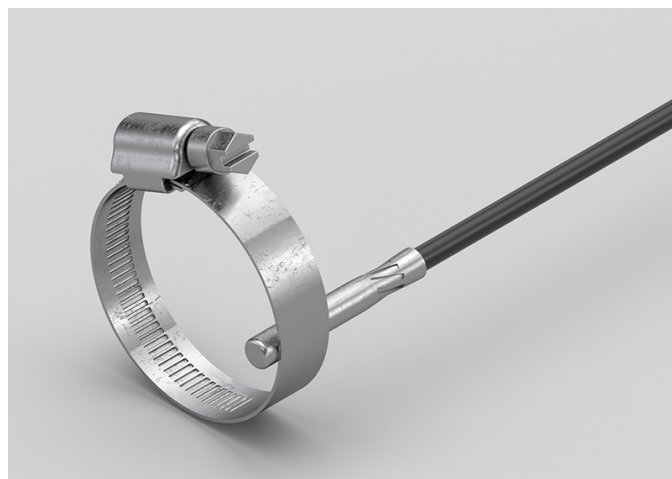


## IPO00C

# BRACELET PROBES WITH TRANSVERSAL STEEL BAND

## PRODUCT FAMILY 30GB36

Probe with bracelet, PT1000 sensor, in PVC cable, diameter 6x30 mm capsule. Suitable for temperature sensing in laboratory equipment and machinery, in heating applications, in the field of renewable energy, in the food field and in the industrial field.



## TECHNICAL DATA

TEMPERATURE RANGE	(-30 +105)°C
MODEL	Bracelet
SENSOR	PT1000
CAPSULE	Diameter 6x30 mm
CABLE	PVC
TERMINITIONS	Tin-plated, tips, connectors (other terminations available on request)
RESPONSE TIME	10 s in non-static liquid at 63.2% (depends on configuration)
IDENTIFICATION	Laser on cable, label (customizable)
DECLARATIONS OF CONFORMITY	CE MARKING, CONFLICT MINERALS, REACH, REACH, ROHS

ITB01C

PROBES WITH STANDARD METAL CAPSULE

PRODUCT FAMILY 15CA05

Probe with steel capsule, PT1000 sensor, in Teflon cable, diameter 6x40 mm capsule. Suitable for temperature sensing in laboratory equipment and machinery.



TECHNICAL DATA

TEMPERATURE RANGE	(-50 +250)°C
MODEL	Steel capsule
SENSOR	PT1000
CAPSULE	Diameter 6x40 mm
CABLE	Teflon
TERMINITIONS	Tin-plated, tips, connectors (other terminations available on request)
RESPONSE TIME	10 s in non-static liquid at 63.2% (depends on configuration)
IDENTIFICATION	Laser on cable, label (customizable)
DECLARATIONS OF CONFORMITY	CE MARKING, CONFLICT MINERALS, MOCA, REACH, REACH, ROHS

ITM01C

PROBES WITH SLIDING  
THREADED CONNECTION

PRODUCT FAMILY 15CR10

Probe with connector, PT1000 sensor, in Teflon cable, diameter 4x40 mm capsule. Suitable for temperature sensing in laboratory equipment and machinery, in heating applications and in the food field.



TECHNICAL DATA

TEMPERATURE RANGE	(-50 +250)°C
MODEL	With connector
SENSOR	PT1000
CAPSULE	Diameter 4x40 mm
CABLE	Teflon
TERMINITIONS	Tin-plated, tips, connectors (other terminations available on request)
RESPONSE TIME	10 s in non-static liquid at 63.2% (depends on configuration)
IDENTIFICATION	Laser on cable, label (customizable)
DECLARATIONS OF CONFORMITY	CE MARKING, CONFLICT MINERALS, REACH, REACH, ROHS

ITM02C

PROBES WITH WELDED  
THREADED CONNECTION

PRODUCT FAMILY 15CR05

Probe with connector, PT1000 sensor, in Teflon cable, diameter 4x40 mm capsule. Suitable for temperature sensing in laboratory equipment and machinery, in heating applications and in the food field.



TECHNICAL DATA

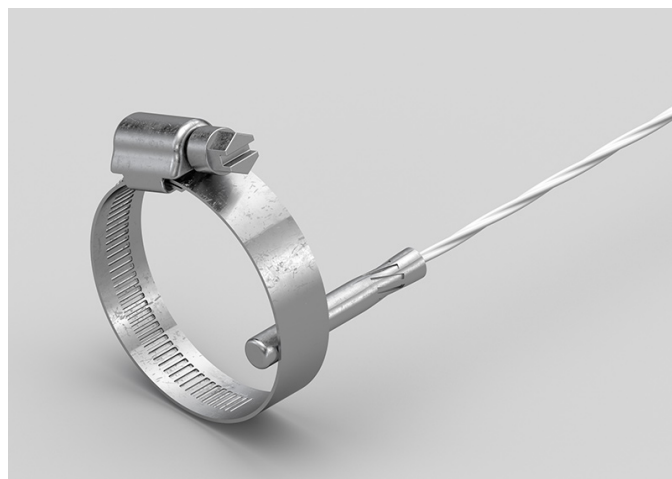
TEMPERATURE RANGE	(-50 +250)°C
MODEL	With connector
SENSOR	PT1000
CAPSULE	Diameter 4x40 mm
CABLE	Teflon
TERMINITIONS	Tin-plated, tips, connectors (other terminations available on request)
RESPONSE TIME	10 s in non-static liquid at 63.2% (depends on configuration)
IDENTIFICATION	Laser on cable, label (customizable)
DECLARATIONS OF CONFORMITY	CE MARKING, CONFLICT MINERALS, REACH, REACH, ROHS

**IT002C**

# BRACELET PROBES WITH TRANSVERSAL STEEL BAND

**PRODUCT FAMILY 30GB36**

Probe with bracelet, PT1000 sensor, in Teflon cable, diameter 6x30 mm capsule. Suitable for temperature sensing in laboratory equipment and machinery, in refrigeration and air conditioning applications, in heating applications, in the food field and in the industrial field.



## TECHNICAL DATA

TEMPERATURE RANGE	(-50 +250)°C
MODEL	Bracelet
SENSOR	PT1000
CAPSULE	Diameter 6x30 mm
CABLE	Teflon
TERMINITIONS	Tin-plated, tips, connectors (other terminations available on request)
RESPONSE TIME	10 s in non-static liquid at 63.2% (depends on configuration)
IDENTIFICATION	Laser on cable, label (customizable)
DECLARATIONS OF CONFORMITY	CE MARKING, CONFLICT MINERALS, REACH, REACH, ROHS

IT003C

STANDARD EYELET PROBES

PRODUCT FAMILY 15C005

Contact probe with PT1000 sensor, in Teflon cable, diameter 4x40 mm capsule. Suitable for temperature sensing in laboratory equipment and machinery, in refrigeration and air conditioning applications, in heating applications, in the food field and in the industrial field.



TECHNICAL DATA

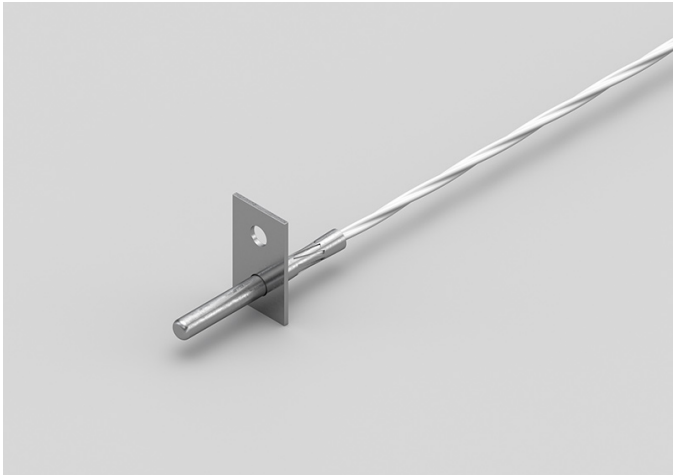
TEMPERATURE RANGE	(0 +250)°C
MODEL	Contact
SENSOR	PT1000
CAPSULE	Diameter 4x40 mm
CABLE	Teflon
TERMINITIONS	Tin-plated, tips, connectors (other terminations available on request)
RESPONSE TIME	10 s in non-static liquid at 63.2% (depends on configuration)
IDENTIFICATION	Laser on cable, label (customizable)
DECLARATIONS OF CONFORMITY	CE MARKING, CONFLICT MINERALS, REACH, REACH, ROHS

ITO04C

# METAL CAPSULE PROBES WITH FLANGE

PRODUCT FAMILY 15CA25

Contact probe with PT1000 sensor, in Teflon cable, diameter 4x40 mm capsule. Suitable for temperature sensing in laboratory equipment and machinery, in heating applications and in the food field.



## TECHNICAL DATA

TEMPERATURE RANGE	(-50 +250)°C
MODEL	Contact
SENSOR	PT1000
CAPSULE	Diameter 4x40 mm
CABLE	Teflon
TERMINITIONS	Tin-plated, tips, connectors (other terminations available on request)
RESPONSE TIME	10 s in non-static liquid at 63.2% (depends on configuration)
IDENTIFICATION	Laser on cable, label (customizable)
DECLARATIONS OF CONFORMITY	CE MARKING, CONFLICT MINERALS, REACH, REACH, ROHS

**IT005C**

# METAL CAPSULE PROBES WITH FLANGE

## PRODUCT FAMILY 15CA25

Contact probe with PT1000 sensor, in Teflon cable, diameter 6x40 mm capsule. Suitable for temperature sensing in laboratory equipment and machinery, in heating applications, in the food field and in the industrial field.



## TECHNICAL DATA

TEMPERATURE RANGE	(-50 +250)°C
MODEL	Contact
SENSOR	PT1000
CAPSULE	Diameter 6x40 mm
CABLE	Teflon
TERMINITIONS	Tin-plated, tips, connectors (other terminations available on request)
RESPONSE TIME	10 s in non-static liquid at 63.2% (depends on configuration)
IDENTIFICATION	Laser on cable, label (customizable)
DECLARATIONS OF CONFORMITY	CE MARKING, CONFLICT MINERALS, REACH, REACH, ROHS



IT006C

# STANDARD EYELET PROBES

PRODUCT FAMILY 15C005

Contact probe with PT1000 sensor, in Teflon cable, diameter 6x40 mm capsule. Suitable for temperature sensing in laboratory equipment and machinery, in heating applications, in the food field and in the industrial field.



## TECHNICAL DATA

TEMPERATURE RANGE	(-50 +250)°C
MODEL	Contact
SENSOR	PT1000
CAPSULE	Diameter 6x40 mm
CABLE	Teflon
TERMINITIONS	Tin-plated, tips, connectors (other terminations available on request)
RESPONSE TIME	10 s in non-static liquid at 63.2% (depends on configuration)
IDENTIFICATION	Laser on cable, label (customizable)
DECLARATIONS OF CONFORMITY	CE MARKING, CONFLICT MINERALS, REACH, REACH, ROHS

**ITR00C**

# PROBES WITH TAPERED METAL CAPSULE

**PRODUCT FAMILY 15CA20**

Probe with steel capsule, PT1000 sensor, in Teflon cable, diameter 3X15 mm + diameter 6X40 mm capsule. Suitable for temperature sensing in laboratory equipment and machinery, in refrigeration and air conditioning applications, in air quality control applications, in the field of renewable energy and in the food field.



## TECHNICAL DATA

TEMPERATURE RANGE	(-50 +250)°C
MODEL	Steel capsule
SENSOR	PT1000
CAPSULE	Diameter 3X15 mm + Diameter 6X40 mm
CABLE	Teflon
TERMINITIONS	Tin-plated, tips, connectors (other terminations available on request)
RESPONSE TIME	10 s in non-static liquid at 63.2% (depends on configuration)
IDENTIFICATION	Laser on cable, label (customizable)
DECLARATIONS OF CONFORMITY	CE MARKING, CONFLICT MINERALS, REACH, REACH, ROHS

**ITR01C**

# PROBES WITH CAPSULE PAD

## PRODUCT FAMILY 15CP10

Contact probe with PT1000 sensor, in Teflon cable, diameter 3x15 mm + pad 10 mm capsule. Suitable for temperature sensing in laboratory equipment and machinery, in refrigeration and air conditioning applications, in air quality control applications, in the field of renewable energy and in the food field.



## TECHNICAL DATA

TEMPERATURE RANGE	(-50 +250)°C
MODEL	Contact
SENSOR	PT1000
CAPSULE	Diameter 3x15 mm + pad 10 mm
CABLE	Teflon
TERMINITIONS	Tin-plated, tips, connectors (other terminations available on request)
RESPONSE TIME	10 s in non-static liquid at 63.2% (depends on configuration)
IDENTIFICATION	Laser on cable, label (customizable)
DECLARATIONS OF CONFORMITY	CE MARKING, CONFLICT MINERALS, REACH, REACH, ROHS

ITU05C

PROBES WITH FAST METAL CAPSULE

PRODUCT FAMILY 15CA10

Probe with steel capsule, PT1000 sensor, in Teflon cable, diameter 4x40 mm capsule. Suitable for temperature sensing in laboratory equipment and machinery, in refrigeration and air conditioning applications, in air quality control applications, in the field of renewable energy and in the food field.



TECHNICAL DATA

TEMPERATURE RANGE	(-50 +250)°C
MODEL	Steel capsule
SENSOR	PT1000
CAPSULE	Diameter 4x40 mm
CABLE	Teflon
TERMINITIONS	Tin-plated, tips, connectors (other terminations available on request)
RESPONSE TIME	10 s in non-static liquid at 63.2% (depends on configuration)
IDENTIFICATION	Laser on cable, label (customizable)
DECLARATIONS OF CONFORMITY	CE MARKING, CONFLICT MINERALS, MOCA, REACH, REACH, ROHS

**IVM00C**

# PROBES WITH SLIDING THREADED CONNECTION

**PRODUCT FAMILY 15CR10**

Probe with connector, PT1000 sensor, in glass fibre cable, diameter 4x40 mm capsule. Suitable for temperature sensing in laboratory equipment and machinery, in heating applications, in the field of renewable energy, in the food field and in the industrial field.



## TECHNICAL DATA

TEMPERATURE RANGE	(0 +250)°C
MODEL	With connector
SENSOR	PT1000
CAPSULE	Diameter 4x40 mm
CABLE	Glass fibre
TERMINITIONS	Tin-plated, tips, connectors (other terminations available on request)
RESPONSE TIME	10 s in non-static liquid at 63.2% (depends on configuration)
IDENTIFICATION	Laser on cable, label (customizable)
DECLARATIONS OF CONFORMITY	CE MARKING, CONFLICT MINERALS, REACH, REACH, ROHS

IVM01C

PROBES WITH WELDED  
THREADED CONNECTION

PRODUCT FAMILY 15CR05

Probe with connector, PT1000 sensor, in glass fibre cable, diameter 4x40 mm capsule. Suitable for temperature sensing in laboratory equipment and machinery, in heating applications, in the field of renewable energy and in the food field.



TECHNICAL DATA

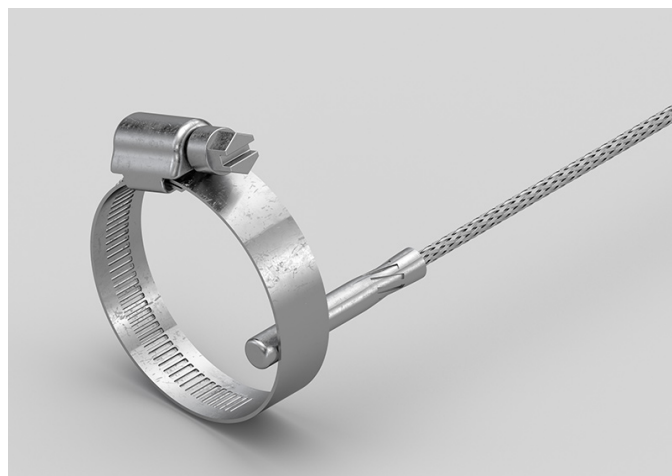
TEMPERATURE RANGE	(0 +250)°C
MODEL	With connector
SENSOR	PT1000
CAPSULE	Diameter 4x40 mm
CABLE	Glass fibre
TERMINITIONS	Tin-plated, tips, connectors (other terminations available on request)
RESPONSE TIME	10 s in non-static liquid at 63.2% (depends on configuration)
IDENTIFICATION	Laser on cable, label (customizable)
DECLARATIONS OF CONFORMITY	CE MARKING, CONFLICT MINERALS, REACH, REACH, ROHS

**IVO01C**

# BRACELET PROBES WITH TRANSVERSAL STEEL BAND

**PRODUCT FAMILY 30GB36**

Probe with bracelet, PT1000 sensor, in glass fibre cable, diameter 6x30 mm capsule. Suitable for temperature sensing in laboratory equipment and machinery, in heating applications, in the field of renewable energy, in the food field and in the industrial field.



## TECHNICAL DATA

TEMPERATURE RANGE	(0 +350)°C
MODEL	Bracelet
SENSOR	PT1000
CAPSULE	Diameter 6x30 mm
CABLE	Glass fibre
TERMINITIONS	Tin-plated, tips, connectors (other terminations available on request)
RESPONSE TIME	10 s in non-static liquid at 63.2% (depends on configuration)
IDENTIFICATION	Laser on cable, label (customizable)
DECLARATIONS OF CONFORMITY	CE MARKING, CONFLICT MINERALS, REACH, REACH, ROHS

**IVO02C**

# STANDARD EYELET PROBES

**PRODUCT FAMILY 15C005**

Contact probe with PT1000 sensor, in glass fibre cable, diameter 4x40 mm capsule. Suitable for temperature sensing in laboratory equipment and machinery, in heating applications, in the field of renewable energy, in the food field and in the industrial field.



## TECHNICAL DATA

TEMPERATURE RANGE	(0 +350)°C
MODEL	Contact
SENSOR	PT1000
CAPSULE	Diameter 4x40 mm
CABLE	Glass fibre
TERMINITIONS	Tin-plated, tips, connectors (other terminations available on request)
RESPONSE TIME	10 s in non-static liquid at 63.2% (depends on configuration)
IDENTIFICATION	Laser on cable, label (customizable)
DECLARATIONS OF CONFORMITY	CE MARKING, CONFLICT MINERALS, REACH, REACH, ROHS

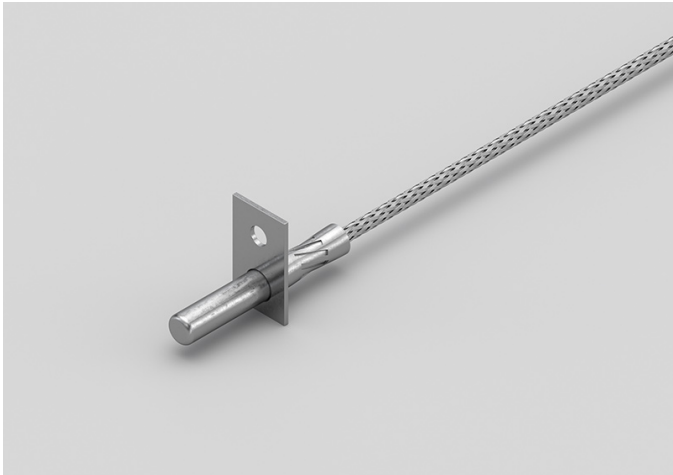


IVO03C

METAL CAPSULE PROBES  
WITH FLANGE

PRODUCT FAMILY 15CA25

Contact probe with PT1000 sensor, in glass fibre cable, diameter 6x40 mm capsule. Suitable for temperature sensing in laboratory equipment and machinery.



TECHNICAL DATA

TEMPERATURE RANGE	(0 +350)°C
MODEL	Contact
SENSOR	PT1000
CAPSULE	Diameter 6x40 mm
CABLE	Glass fibre
TERMINITIONS	Tin-plated, tips, connectors (other terminations available on request)
RESPONSE TIME	10 s in non-static liquid at 63.2% (depends on configuration)
IDENTIFICATION	Laser on cable, label (customizable)
DECLARATIONS OF CONFORMITY	CE MARKING, CONFLICT MINERALS, REACH, REACH, ROHS

IVO04C

# STANDARD EYELET PROBES

PRODUCT FAMILY 15C005

Contact probe with PT1000 sensor, in glass fibre cable, diameter 6x40 mm capsule. Suitable for temperature sensing in laboratory equipment and machinery.



## TECHNICAL DATA

TEMPERATURE RANGE	(0 +350)°C
MODEL	Contact
SENSOR	PT1000
CAPSULE	Diameter 6x40 mm
CABLE	Glass fibre
TERMINITIONS	Tin-plated, tips, connectors (other terminations available on request)
RESPONSE TIME	10 s in non-static liquid at 63.2% (depends on configuration)
IDENTIFICATION	Laser on cable, label (customizable)
DECLARATIONS OF CONFORMITY	CE MARKING, CONFLICT MINERALS, REACH, REACH, ROHS

**IVR01C**

# PROBES WITH TAPERED METAL CAPSULE

**PRODUCT FAMILY 15CA20**

Probe with steel capsule, PT1000 sensor, in glass fibre cable, diameter 3X15 mm + diameter 6X40 mm capsule. Suitable for temperature sensing in laboratory equipment and machinery.



## TECHNICAL DATA

TEMPERATURE RANGE	(0 +350)°C
MODEL	Steel capsule
SENSOR	PT1000
CAPSULE	Diameter 3X15 mm + Diameter 6X40 mm
CABLE	Glass fibre
TERMINITIONS	Tin-plated, tips, connectors (other terminations available on request)
RESPONSE TIME	10 s in non-static liquid at 63.2% (depends on configuration)
IDENTIFICATION	Laser on cable, label (customizable)
DECLARATIONS OF CONFORMITY	CE MARKING, CONFLICT MINERALS, REACH, REACH, ROHS

**IVR02C**

# PROBES WITH TAPERED METAL CAPSULE

**PRODUCT FAMILY 15CA20**

Probe with steel capsule, PT1000 sensor, in glass fibre cable, diameter 3X15 mm + diameter 6X40 mm capsule. Suitable for temperature sensing in laboratory equipment and machinery.



## TECHNICAL DATA

TEMPERATURE RANGE	(0 +350)°C
MODEL	Steel capsule
SENSOR	PT1000
CAPSULE	Diameter 3X15 mm + Diameter 6X40 mm
CABLE	Glass fibre
TERMINITIONS	Tin-plated, tips, connectors (other terminations available on request)
RESPONSE TIME	10 s in non-static liquid at 63.2% (depends on configuration)
IDENTIFICATION	Laser on cable, label (customizable)
DECLARATIONS OF CONFORMITY	CE MARKING, CONFLICT MINERALS, REACH, REACH, ROHS

**IVU07C**

# PROBES WITH FAST METAL CAPSULE

**PRODUCT FAMILY 15CA10**

Probe with steel capsule, PT1000 sensor, in glass fibre cable, diameter 4x40 mm capsule. Suitable for temperature sensing in laboratory equipment and machinery, in heating applications, in the food field and in the industrial field.



## TECHNICAL DATA

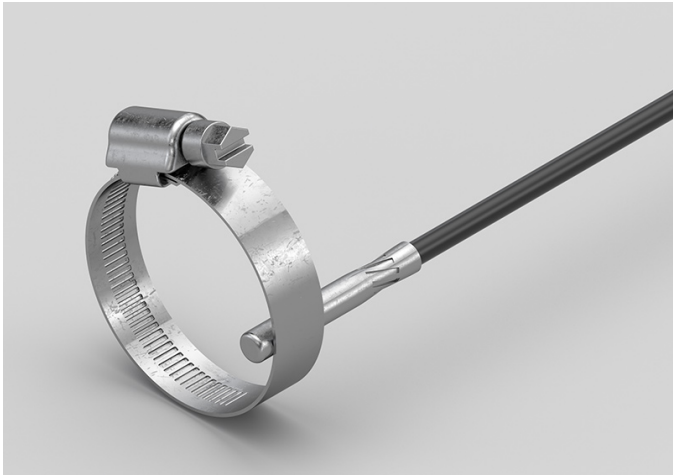
TEMPERATURE RANGE	(0 +350)°C
MODEL	Steel capsule
SENSOR	PT1000
CAPSULE	Diameter 4x40 mm
CABLE	Glass fibre
TERMINITIONS	Tin-plated, tips, connectors (other terminations available on request)
RESPONSE TIME	10 s in non-static liquid at 63.2% (depends on configuration)
IDENTIFICATION	Laser on cable, label (customizable)
DECLARATIONS OF CONFORMITY	CE MARKING, CONFLICT MINERALS, MOCA, REACH, REACH, ROHS

NPO01C

# BRACELET PROBES WITH TRANSVERSAL STEEL BAND

PRODUCT FAMILY 30GB36

Probe with bracelet, NTC sensor, in PVC cable, diameter 6x30 mm capsule. Suitable for temperature sensing in heating applications and in the food field.



## TECHNICAL DATA

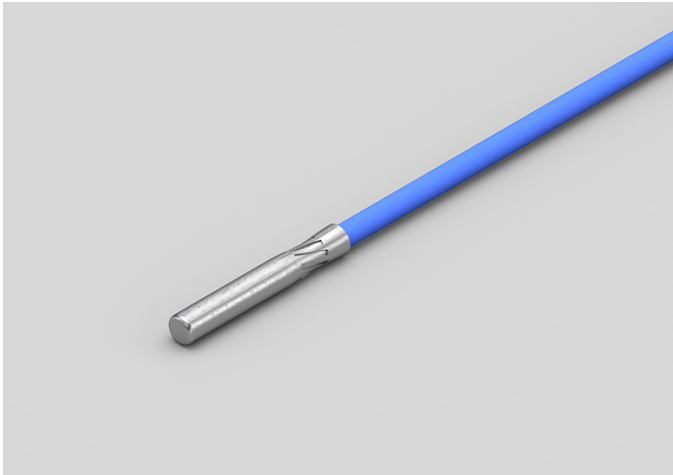
TEMPERATURE RANGE	(-30 +105)°C
MODEL	Bracelet
SENSOR	NTC
CAPSULE	Diameter 6x30 mm
CABLE	PVC
TERMINITIONS	Tin-plated, tips, connectors (other terminations available on request)
RESPONSE TIME	10 s in non-static liquid at 63.2% (depends on configuration)
IDENTIFICATION	Laser on cable, label (customizable)
DECLARATIONS OF CONFORMITY	CE MARKING, CONFLICT MINERALS, MOCA, REACH, REACH, ROHS

RGB15C

PROBES WITH STANDARD METAL CAPSULE

PRODUCT FAMILY 15CA05

Probe with steel capsule, NTC sensor, in silicone cable, diameter 6x40 mm capsule. Suitable for temperature sensing in refrigeration and air conditioning applications, in air quality control applications, in heating applications and in the food field.



TECHNICAL DATA

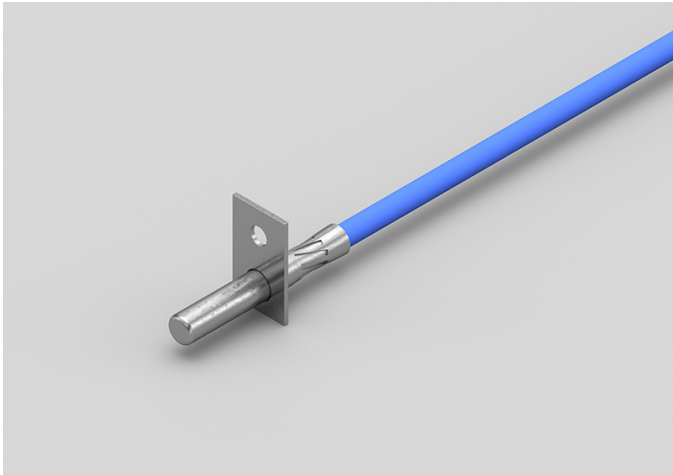
TEMPERATURE RANGE	(-50 +200)°C
MODEL	Steel capsule
SENSOR	NTC
CAPSULE	Diameter 6x40 mm
CABLE	Silicone
TERMINITIONS	Tin-plated, tips, connectors (other terminations available on request)
RESPONSE TIME	10 s in non-static liquid at 63.2% (depends on configuration)
IDENTIFICATION	Laser on cable, label (customizable)
DECLARATIONS OF CONFORMITY	CE MARKING, CONFLICT MINERALS, MOCA, REACH, REACH, ROHS

RGB26C

# METAL CAPSULE PROBES WITH FLANGE

PRODUCT FAMILY 15CA25

Contact probe with NTC sensor, in silicone cable, diameter 6x40 mm capsule. Suitable for temperature sensing in refrigeration and air conditioning applications and in the food field.



## TECHNICAL DATA

TEMPERATURE RANGE	(-50 +200)°C
MODEL	Contact
SENSOR	NTC
CAPSULE	Diameter 6x40 mm
CABLE	Silicone
TERMINITIONS	Tin-plated, tips, connectors (other terminations available on request)
RESPONSE TIME	10 s in non-static liquid at 63.2% (depends on configuration)
IDENTIFICATION	Laser on cable, label (customizable)
DECLARATIONS OF CONFORMITY	CE MARKING, CONFLICT MINERALS, MOCA, REACH, REACH, ROHS

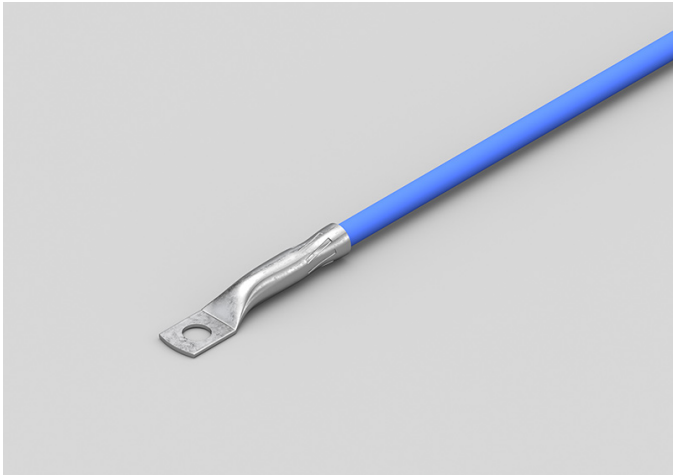


RGB27C

# STANDARD EYELET PROBES

## PRODUCT FAMILY 15C005

Contact probe with NTC sensor, in silicone cable, diameter 6x40 mm capsule. Suitable for temperature sensing in refrigeration and air conditioning applications and in the food field.



## TECHNICAL DATA

TEMPERATURE RANGE	(-50 +200)°C
MODEL	Contact
SENSOR	NTC
CAPSULE	Diameter 6x40 mm
CABLE	Silicone
TERMINITIONS	Tin-plated, tips, connectors (other terminations available on request)
RESPONSE TIME	10 s in non-static liquid at 63.2% (depends on configuration)
IDENTIFICATION	Laser on cable, label (customizable)
DECLARATIONS OF CONFORMITY	CE MARKING, CONFLICT MINERALS, MOCA, REACH, REACH, ROHS

RGM04C

PROBES WITH WELDED  
THREADED CONNECTION

PRODUCT FAMILY 15CR05

Probe with connector, NTC sensor, in silicone cable, diameter 4x40 mm capsule. Suitable for temperature sensing in heating applications and in the food field.



TECHNICAL DATA

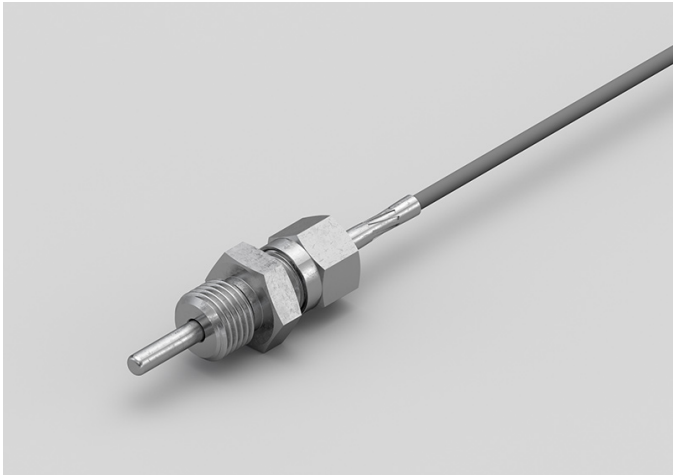
TEMPERATURE RANGE	(-50 +200)°C
MODEL	With connector
SENSOR	NTC
CAPSULE	Diameter 4x40 mm
CABLE	Silicone
TERMINITIONS	Tin-plated, tips, connectors (other terminations available on request)
RESPONSE TIME	10 s in non-static liquid at 63.2% (depends on configuration)
IDENTIFICATION	Laser on cable, label (customizable)
DECLARATIONS OF CONFORMITY	CE MARKING, CONFLICT MINERALS, REACH, REACH, ROHS

RGM05C

PROBES WITH SLIDING  
THREADED CONNECTION

PRODUCT FAMILY 15CR10

Probe with connector, NTC sensor, in silicone cable, diameter 4x40 mm capsule. Suitable for temperature sensing in heating applications and in the food field.



TECHNICAL DATA

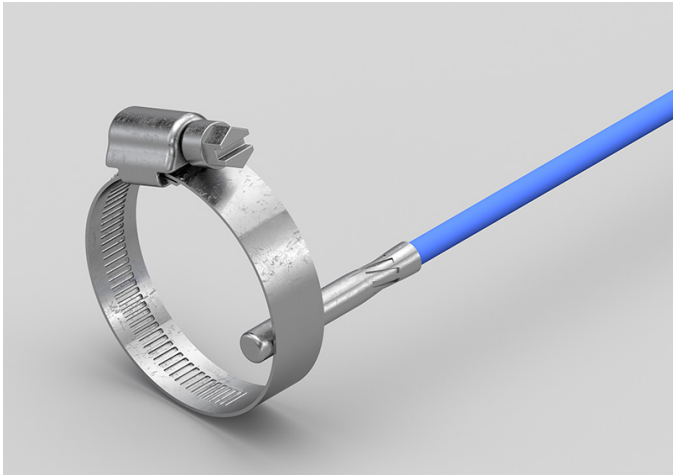
TEMPERATURE RANGE	(-50 +200)°C
MODEL	With connector
SENSOR	NTC
CAPSULE	Diameter 4x40 mm
CABLE	Silicone
TERMINITIONS	Tin-plated, tips, connectors (other terminations available on request)
RESPONSE TIME	10 s in non-static liquid at 63.2% (depends on configuration)
IDENTIFICATION	Laser on cable, label (customizable)
DECLARATIONS OF CONFORMITY	CE MARKING, CONFLICT MINERALS, REACH, REACH, ROHS

RG000C

# BRACELET PROBES WITH TRANSVERSAL STEEL BAND

PRODUCT FAMILY 30GB36

Probe with bracelet, NTC sensor, in silicone cable, diameter 6x30 mm capsule. Suitable for temperature sensing in refrigeration and air conditioning applications, in air quality control applications, in the field of renewable energy and in the food field.



## TECHNICAL DATA

TEMPERATURE RANGE	(-50 +200)°C
MODEL	Bracelet
SENSOR	NTC
CAPSULE	Diameter 6x30 mm
CABLE	Silicone
TERMINITIONS	Tin-plated, tips, connectors (other terminations available on request)
RESPONSE TIME	10 s in non-static liquid at 63.2% (depends on configuration)
IDENTIFICATION	Laser on cable, label (customizable)
DECLARATIONS OF CONFORMITY	CE MARKING, CONFLICT MINERALS, MOCA, REACH, REACH, ROHS

RG001C

# STANDARD EYELET PROBES

PRODUCT FAMILY 15C005

Contact probe with NTC sensor, in silicone cable, diameter 4x40 mm capsule. Suitable for temperature sensing in air quality control applications and in the field of renewable energy.



## TECHNICAL DATA

TEMPERATURE RANGE	(-50 +200)°C
MODEL	Contact
SENSOR	NTC
CAPSULE	Diameter 4x40 mm
CABLE	Silicone
TERMINITIONS	Tin-plated, tips, connectors (other terminations available on request)
RESPONSE TIME	10 s in non-static liquid at 63.2% (depends on configuration)
IDENTIFICATION	Laser on cable, label (customizable)
DECLARATIONS OF CONFORMITY	CE MARKING, CONFLICT MINERALS, MOCA, REACH, REACH, ROHS

RGR01C

PROBES WITH TAPERED  
METAL CAPSULE

PRODUCT FAMILY 15CA20

Probe with steel capsule, NTC sensor, in silicone cable, diameter 3X15 mm + diameter 6X40 mm capsule. Suitable for temperature sensing in air quality control applications and in the field of renewable energy.



TECHNICAL DATA

TEMPERATURE RANGE	(-50 +200)°C
MODEL	Steel capsule
SENSOR	NTC
CAPSULE	Diameter 3X15 mm + Diameter 6X40 mm
CABLE	Silicone
TERMINITIONS	Tin-plated, tips, connectors (other terminations available on request)
RESPONSE TIME	10 s in non-static liquid at 63.2% (depends on configuration)
IDENTIFICATION	Laser on cable, label (customizable)
DECLARATIONS OF CONFORMITY	CE MARKING, CONFLICT MINERALS, REACH, REACH, ROHS

RGU02C

PROBES WITH FAST METAL CAPSULE

PRODUCT FAMILY 15CA10

Probe with steel capsule, NTC sensor, in silicone cable, diameter 4x40 mm capsule. Suitable for temperature sensing in refrigeration and air conditioning applications, in air quality control applications, in heating applications, in the field of renewable energy and in the food field.



TECHNICAL DATA

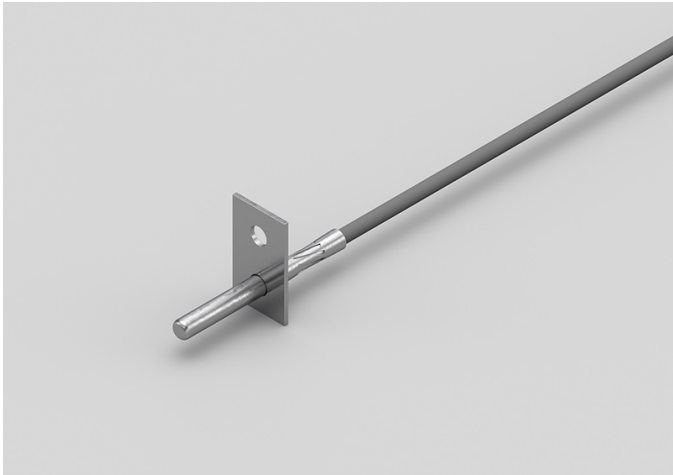
TEMPERATURE RANGE	(-50 +200)°C
MODEL	Steel capsule
SENSOR	NTC
CAPSULE	Diameter 4x40 mm
CABLE	Silicone
TERMINITIONS	Tin-plated, tips, connectors (other terminations available on request)
RESPONSE TIME	10 s in non-static liquid at 63.2% (depends on configuration)
IDENTIFICATION	Laser on cable, label (customizable)
DECLARATIONS OF CONFORMITY	CE MARKING, CONFLICT MINERALS, MOCA, REACH, REACH, ROHS

RGU03C

METAL CAPSULE PROBES  
WITH FLANGE

PRODUCT FAMILY 15CA25

Contact probe with NTC sensor, in silicone cable, diameter 4x40 mm capsule. Suitable for temperature sensing in refrigeration and air conditioning applications, in air quality control applications, in heating applications, in the field of renewable energy and in the food field.



TECHNICAL DATA

TEMPERATURE RANGE	(-50 +200)°C
MODEL	Contact
SENSOR	NTC
CAPSULE	Diameter 4x40 mm
CABLE	Silicone
TERMINITIONS	Tin-plated, tips, connectors (other terminations available on request)
RESPONSE TIME	10 s in non-static liquid at 63.2% (depends on configuration)
IDENTIFICATION	Laser on cable, label (customizable)
DECLARATIONS OF CONFORMITY	CE MARKING, CONFLICT MINERALS, MOCA, REACH, REACH, ROHS

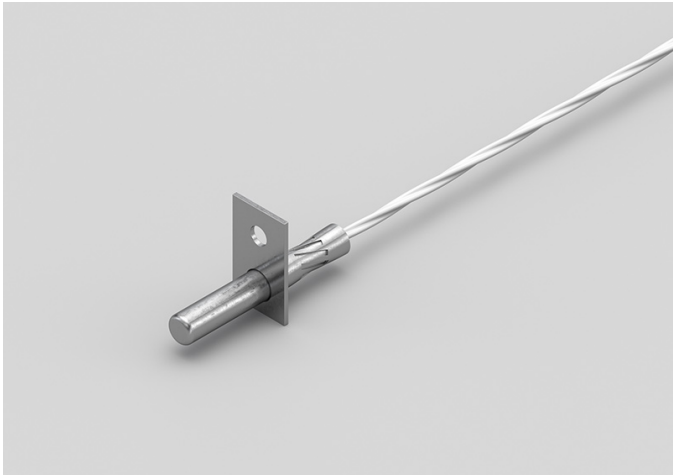


RTB01C

METAL CAPSULE PROBES  
WITH FLANGE

PRODUCT FAMILY 15CA25

Contact probe with NTC sensor, in Teflon cable, diameter 6x40 mm capsule. Suitable for temperature sensing in refrigeration and air conditioning applications, in air quality control applications, in heating applications and in the food field.



TECHNICAL DATA

TEMPERATURE RANGE	(-50 +250)°C
MODEL	Contact
SENSOR	NTC
CAPSULE	Diameter 6x40 mm
CABLE	Teflon
TERMINITIONS	Tin-plated, tips, connectors (other terminations available on request)
RESPONSE TIME	10 s in non-static liquid at 63.2% (depends on configuration)
IDENTIFICATION	Laser on cable, label (customizable)
DECLARATIONS OF CONFORMITY	CE MARKING, CONFLICT MINERALS, MOCA, REACH, REACH, ROHS

RTB02C

PROBES WITH STANDARD METAL CAPSULE

PRODUCT FAMILY 15CA05

Probe with steel capsule, NTC sensor, in Teflon cable, diameter 6x40 mm capsule. Suitable for temperature sensing in heating applications and in the food field.



TECHNICAL DATA

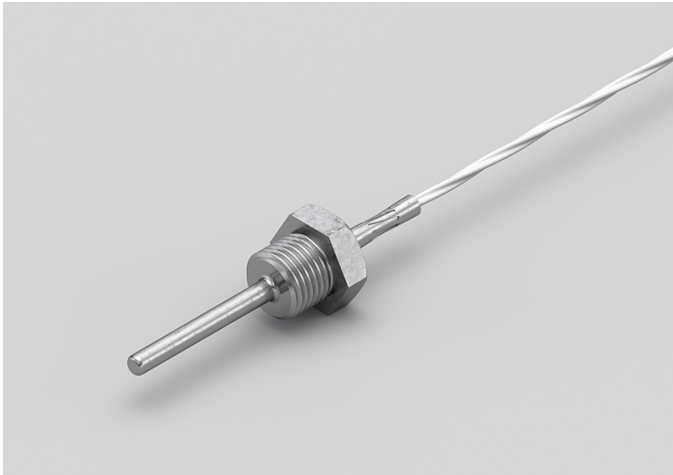
TEMPERATURE RANGE	(-50 +250)°C
MODEL	Steel capsule
SENSOR	NTC
CAPSULE	Diameter 6x40 mm
CABLE	Teflon
TERMINITIONS	Tin-plated, tips, connectors (other terminations available on request)
RESPONSE TIME	10 s in non-static liquid at 63.2% (depends on configuration)
IDENTIFICATION	Laser on cable, label (customizable)
DECLARATIONS OF CONFORMITY	CE MARKING, CONFLICT MINERALS, MOCA, REACH, REACH, ROHS

RTM03C

PROBES WITH WELDED  
THREADED CONNECTION

PRODUCT FAMILY 15CR05

Probe with connector, NTC sensor, in Teflon cable, diameter 4x40 mm capsule. Suitable for temperature sensing in refrigeration and air conditioning applications, in the food field and in the industrial field.



TECHNICAL DATA

TEMPERATURE RANGE	(-50 +250)°C
MODEL	With connector
SENSOR	NTC
CAPSULE	Diameter 4x40 mm
CABLE	Teflon
TERMINITIONS	Tin-plated, tips, connectors (other terminations available on request)
RESPONSE TIME	10 s in non-static liquid at 63.2% (depends on configuration)
IDENTIFICATION	Laser on cable, label (customizable)
DECLARATIONS OF CONFORMITY	CE MARKING, CONFLICT MINERALS, REACH, REACH, ROHS

RTM04C

PROBES WITH SLIDING  
THREADED CONNECTION

PRODUCT FAMILY 15CR10

Probe with connector, NTC sensor, in Teflon cable, diameter 4x40 mm capsule. Suitable for temperature sensing in heating applications and in the food field.



TECHNICAL DATA

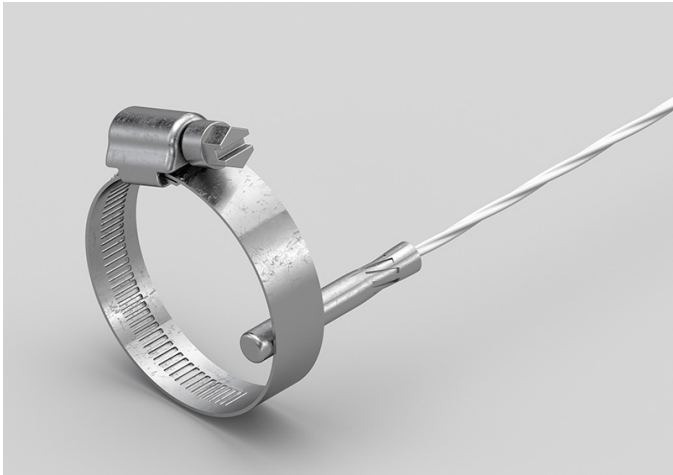
TEMPERATURE RANGE	(-50 +250)°C
MODEL	With connector
SENSOR	NTC
CAPSULE	Diameter 4x40 mm
CABLE	Teflon
TERMINITIONS	Tin-plated, tips, connectors (other terminations available on request)
RESPONSE TIME	10 s in non-static liquid at 63.2% (depends on configuration)
IDENTIFICATION	Laser on cable, label (customizable)
DECLARATIONS OF CONFORMITY	CE MARKING, CONFLICT MINERALS, REACH, REACH, ROHS

RT000C

# BRACELET PROBES WITH TRANSVERSAL STEEL BAND

PRODUCT FAMILY 30GB36

Probe with bracelet, NTC sensor, in Teflon cable, diameter 6x30 mm capsule. Suitable for temperature sensing in the food field.



## TECHNICAL DATA

TEMPERATURE RANGE	(-50 +250)°C
MODEL	Bracelet
SENSOR	NTC
CAPSULE	Diameter 6x30 mm
CABLE	Teflon
TERMINITIONS	Tin-plated, tips, connectors (other terminations available on request)
RESPONSE TIME	10 s in non-static liquid at 63.2% (depends on configuration)
IDENTIFICATION	Laser on cable, label (customizable)
DECLARATIONS OF CONFORMITY	CE MARKING, CONFLICT MINERALS, MOCA, REACH, REACH, ROHS

RT001C

# STANDARD EYELET PROBES

PRODUCT FAMILY 15C005

Contact probe with NTC sensor, in Teflon cable, diameter 6x40 mm capsule. Suitable for temperature sensing in the food field.



## TECHNICAL DATA

TEMPERATURE RANGE	(-50 +250)°C
MODEL	Contact
SENSOR	NTC
CAPSULE	Diameter 6x40 mm
CABLE	Teflon
TERMINITIONS	Tin-plated, tips, connectors (other terminations available on request)
RESPONSE TIME	10 s in non-static liquid at 63.2% (depends on configuration)
IDENTIFICATION	Laser on cable, label (customizable)
DECLARATIONS OF CONFORMITY	CE MARKING, CONFLICT MINERALS, MOCA, REACH, REACH, ROHS

RT002C

# STANDARD EYELET PROBES

## PRODUCT FAMILY 15C005

Contact probe with NTC sensor, in Teflon cable, diameter 4x40 mm capsule. Suitable for temperature sensing in the field of renewable energy.



## TECHNICAL DATA

TEMPERATURE RANGE	(-50 +250)°C
MODEL	Contact
SENSOR	NTC
CAPSULE	Diameter 4x40 mm
CABLE	Teflon
TERMINITIONS	Tin-plated, tips, connectors (other terminations available on request)
RESPONSE TIME	10 s in non-static liquid at 63.2% (depends on configuration)
IDENTIFICATION	Laser on cable, label (customizable)
DECLARATIONS OF CONFORMITY	CE MARKING, CONFLICT MINERALS, MOCA, REACH, REACH, ROHS

**RTR07C**

# PROBES WITH TAPERED METAL CAPSULE

**PRODUCT FAMILY 15CA20**

Probe with steel capsule, NTC sensor, in Teflon cable, diameter 3X15 mm + diameter 6X40 mm capsule. Suitable for temperature sensing in refrigeration and air conditioning applications, in air quality control applications, in heating applications and in the food field.



## TECHNICAL DATA

TEMPERATURE RANGE	(-50 +250)°C
MODEL	Steel capsule
SENSOR	NTC
CAPSULE	Diameter 3X15 mm + Diameter 6X40 mm
CABLE	Teflon
TERMINITIONS	Tin-plated, tips, connectors (other terminations available on request)
RESPONSE TIME	10 s in non-static liquid at 63.2% (depends on configuration)
IDENTIFICATION	Laser on cable, label (customizable)
DECLARATIONS OF CONFORMITY	CE MARKING, CONFLICT MINERALS, REACH, REACH, ROHS



RTU03C

PROBES WITH FAST METAL CAPSULE

PRODUCT FAMILY 15CA10

Probe with steel capsule, NTC sensor, in Teflon cable, diameter 4x40 mm capsule. Suitable for temperature sensing in the field of renewable energy.



TECHNICAL DATA

TEMPERATURE RANGE	(-50 +250)°C
MODEL	Steel capsule
SENSOR	NTC
CAPSULE	Diameter 4x40 mm
CABLE	Teflon
TERMINITIONS	Tin-plated, tips, connectors (other terminations available on request)
RESPONSE TIME	10 s in non-static liquid at 63.2% (depends on configuration)
IDENTIFICATION	Laser on cable, label (customizable)
DECLARATIONS OF CONFORMITY	CE MARKING, CONFLICT MINERALS, MOCA, REACH, REACH, ROHS

RTU05C

METAL CAPSULE PROBES  
WITH FLANGE

PRODUCT FAMILY 15CA25

Contact probe with NTC sensor, in Teflon cable, diameter 4x40 mm capsule. Suitable for temperature sensing in the field of renewable energy and in the food field.



TECHNICAL DATA

TEMPERATURE RANGE	(-50 +250)°C
MODEL	Contact
SENSOR	NTC
CAPSULE	Diameter 4x40 mm
CABLE	Teflon
TERMINITIONS	Tin-plated, tips, connectors (other terminations available on request)
RESPONSE TIME	10 s in non-static liquid at 63.2% (depends on configuration)
IDENTIFICATION	Laser on cable, label (customizable)
DECLARATIONS OF CONFORMITY	CE MARKING, CONFLICT MINERALS, MOCA, REACH, REACH, ROHS

RVB01C

PROBES WITH STANDARD METAL CAPSULE

PRODUCT FAMILY 15CA05

Probe with steel capsule, NTC sensor, in glass fibre cable, diameter 6x40 mm capsule. Suitable for temperature sensing in refrigeration and air conditioning applications, in the field of renewable energy, in the food field and in the industrial field.



TECHNICAL DATA

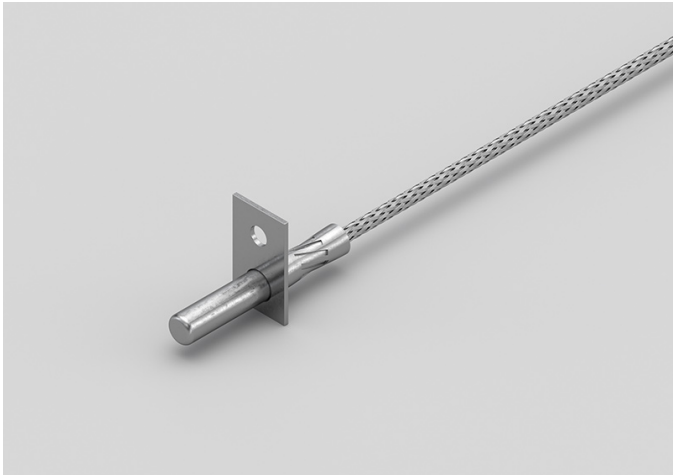
TEMPERATURE RANGE	(0 +300)°C
MODEL	Steel capsule
SENSOR	NTC
CAPSULE	Diameter 6x40 mm
CABLE	Glass fibre
TERMINITIONS	Tin-plated, tips, connectors (other terminations available on request)
RESPONSE TIME	10 s in non-static liquid at 63.2% (depends on configuration)
IDENTIFICATION	Laser on cable, label (customizable)
DECLARATIONS OF CONFORMITY	CE MARKING, CONFLICT MINERALS, MOCA, REACH, REACH, ROHS

RVB02C

METAL CAPSULE PROBES  
WITH FLANGE

PRODUCT FAMILY 15CA25

Contact probe with NTC sensor, in glass fibre cable, diameter 6x40 mm capsule. Suitable for temperature sensing in refrigeration and air conditioning applications, in the field of renewable energy, in the food field and in the industrial field.



TECHNICAL DATA

TEMPERATURE RANGE	(0 +300)°C
MODEL	Contact
SENSOR	NTC
CAPSULE	Diameter 6x40 mm
CABLE	Glass fibre
TERMINITIONS	Tin-plated, tips, connectors (other terminations available on request)
RESPONSE TIME	10 s in non-static liquid at 63.2% (depends on configuration)
IDENTIFICATION	Laser on cable, label (customizable)
DECLARATIONS OF CONFORMITY	CE MARKING, CONFLICT MINERALS, MOCA, REACH, REACH, ROHS

RVM01C

PROBES WITH SLIDING  
THREADED CONNECTION

PRODUCT FAMILY 15CR10

Probe with connector, NTC sensor, in glass fibre cable, diameter 4x40 mm capsule. Suitable for temperature sensing in heating applications and in the food field.



TECHNICAL DATA

TEMPERATURE RANGE	(0 +300)°C
MODEL	With connector
SENSOR	NTC
CAPSULE	Diameter 4x40 mm
CABLE	Glass fibre
TERMINITIONS	Tin-plated, tips, connectors (other terminations available on request)
RESPONSE TIME	10 s in non-static liquid at 63.2% (depends on configuration)
IDENTIFICATION	Laser on cable, label (customizable)
DECLARATIONS OF CONFORMITY	CE MARKING, CONFLICT MINERALS, REACH, REACH, ROHS

RVM04C

PROBES WITH WELDED  
THREADED CONNECTION

PRODUCT FAMILY 15CR05

Probe with connector, NTC sensor, in glass fibre cable, diameter 4x40 mm capsule. Suitable for temperature sensing in the industrial field.



TECHNICAL DATA

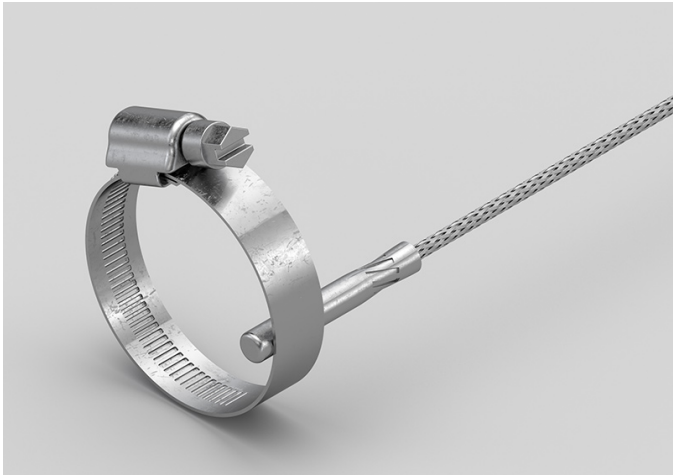
TEMPERATURE RANGE	(0 +300)°C
MODEL	With connector
SENSOR	NTC
CAPSULE	Diameter 4x40 mm
CABLE	Glass fibre
TERMINITIONS	Tin-plated, tips, connectors (other terminations available on request)
RESPONSE TIME	10 s in non-static liquid at 63.2% (depends on configuration)
IDENTIFICATION	Laser on cable, label (customizable)
DECLARATIONS OF CONFORMITY	CE MARKING, CONFLICT MINERALS, REACH, REACH, ROHS

RVO00C

# BRACELET PROBES WITH TRANSVERSAL STEEL BAND

## PRODUCT FAMILY 30GB36

Probe with bracelet, NTC sensor, in glass fibre cable, diameter 6x30 mm capsule. Suitable for temperature sensing in the industrial field.



## TECHNICAL DATA

TEMPERATURE RANGE	(0 +300)°C
MODEL	Bracelet
SENSOR	NTC
CAPSULE	Diameter 6x30 mm
CABLE	Glass fibre
TERMINITIONS	Tin-plated, tips, connectors (other terminations available on request)
RESPONSE TIME	10 s in non-static liquid at 63.2% (depends on configuration)
IDENTIFICATION	Laser on cable, label (customizable)
DECLARATIONS OF CONFORMITY	CE MARKING, CONFLICT MINERALS, REACH, REACH, ROHS

RVO01C

# STANDARD EYELET PROBES

## PRODUCT FAMILY 15C005

Contact probe with NTC sensor, in glass fibre cable, diameter 6x40 mm capsule. Suitable for temperature sensing in heating applications, in the food field and in the industrial field.



## TECHNICAL DATA

TEMPERATURE RANGE	(0 +300)°C
MODEL	Contact
SENSOR	NTC
CAPSULE	Diameter 6x40 mm
CABLE	Glass fibre
TERMINITIONS	Tin-plated, tips, connectors (other terminations available on request)
RESPONSE TIME	10 s in non-static liquid at 63.2% (depends on configuration)
IDENTIFICATION	Laser on cable, label (customizable)
DECLARATIONS OF CONFORMITY	CE MARKING, CONFLICT MINERALS, REACH, REACH, ROHS



RVO02C

# STANDARD EYELET PROBES

PRODUCT FAMILY 15C005

Contact probe with NTC sensor, in glass fibre cable, diameter 4x40 mm capsule. Suitable for temperature sensing in the industrial field.



## TECHNICAL DATA

TEMPERATURE RANGE	(0 +300)°C
MODEL	Contact
SENSOR	NTC
CAPSULE	Diameter 4x40 mm
CABLE	Glass fibre
TERMINITIONS	Tin-plated, tips, connectors (other terminations available on request)
RESPONSE TIME	10 s in non-static liquid at 63.2% (depends on configuration)
IDENTIFICATION	Laser on cable, label (customizable)
DECLARATIONS OF CONFORMITY	CE MARKING, CONFLICT MINERALS, REACH, REACH, ROHS

**RVR00C**

# PROBES WITH TAPERED METAL CAPSULE

**PRODUCT FAMILY 15CA20**

Probe with steel capsule, NTC sensor, in glass fibre cable, diameter 3X15 mm + diameter 6X40 mm capsule. Suitable for temperature sensing in the industrial field.



## TECHNICAL DATA

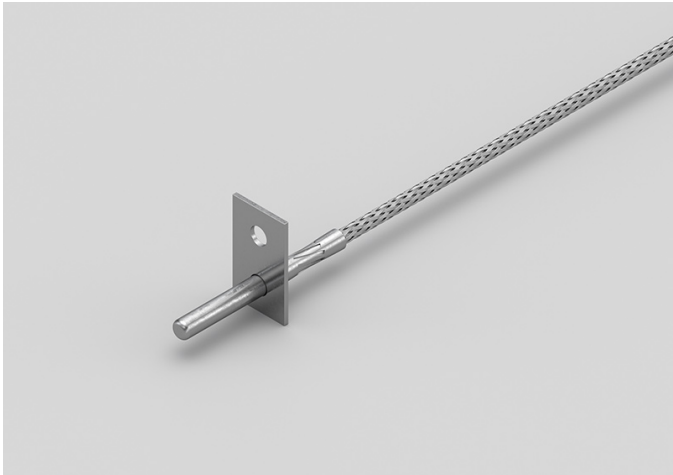
TEMPERATURE RANGE	(0 +300)°C
MODEL	Steel capsule
SENSOR	NTC
CAPSULE	Diameter 3X15 mm + Diameter 6X40 mm
CABLE	Glass fibre
TERMINITIONS	Tin-plated, tips, connectors (other terminations available on request)
RESPONSE TIME	10 s in non-static liquid at 63.2% (depends on configuration)
IDENTIFICATION	Laser on cable, label (customizable)
DECLARATIONS OF CONFORMITY	CE MARKING, CONFLICT MINERALS, REACH, REACH, ROHS

RVU02C

# METAL CAPSULE PROBES WITH FLANGE

PRODUCT FAMILY 15CA25

Contact probe with NTC sensor, in glass fibre cable, diameter 4x40 mm capsule. Suitable for temperature sensing in heating applications, in the food field and in the industrial field.



## TECHNICAL DATA

TEMPERATURE RANGE	(0 +300)°C
MODEL	Contact
SENSOR	NTC
CAPSULE	Diameter 4x40 mm
CABLE	Glass fibre
TERMINITIONS	Tin-plated, tips, connectors (other terminations available on request)
RESPONSE TIME	10 s in non-static liquid at 63.2% (depends on configuration)
IDENTIFICATION	Laser on cable, label (customizable)
DECLARATIONS OF CONFORMITY	CE MARKING, CONFLICT MINERALS, MOCA, REACH, REACH, ROHS





**SACET S.R.L.**  
**Via del Candel, 55/D**  
**32100 Belluno (BL) Italy**

**C.F. E P.I. 00654590256**

**PHONE NUMBER +39 0437 33166**

**EMAIL [info@sacet-probes.com](mailto:info@sacet-probes.com)**