

CATALOG

TEMPERATURE PROBES

APPLICATION REFRIGERATION AND AIR CONDITIONING

CATEGORY AIR CONDITIONING / VENTILATION

CATEGORY

AIR CONDITIONING / VENTILATION

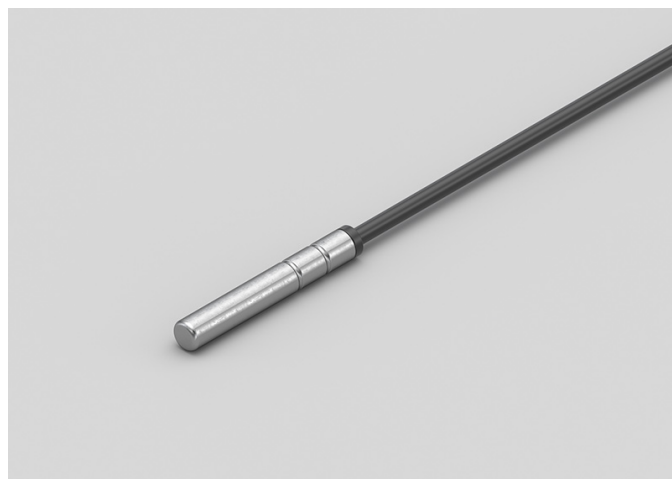
Humidity management is important, both in excess and in defect. A high rate can lead to mould and bacteria growth, too low a rate can cause problems for the house and its inhabitants.

ADB00C

IP68 RUBBER PROBES Ø6X40..50/60 MM STEEL

PRODUCT FAMILY 30GC07

IP68 probe with PTC sensor, TPE round cable, diameter 6x40 mm capsule. Suitable for temperature sensing in refrigeration and air conditioning applications, in air quality control applications, in heating applications, in the food field and in the industrial field.



TECHNICAL DATA

TEMPERATURE RANGE	(-50 +110)°C
MODEL	IP68
SENSOR	PTC
CAPSULE	Diameter 6x40 mm
CABLE	TPE round
TERMINITIONS	Tin-plated, tips, connectors (other terminations available on request)
RESPONSE TIME	10 s in non-static liquid at 63.2% (depends on configuration)
IDENTIFICATION	Laser on cable, label (customizable)
DECLARATIONS OF CONFORMITY	CE MARKING, CONFLICT MINERALS, REACH, REACH, ROHS

AEI00C

IP55 COPPER PLATE BRACELET PROBES

PRODUCT FAMILY 30GB15

Probe with bracelet, PTC sensor, TPE flat cable, 6x6x15 mm + copper plate capsule. Suitable for temperature sensing in laboratory equipment and machinery, in refrigeration and air conditioning applications, in air quality control applications, in heating applications, in the food field and in the industrial field.



TECHNICAL DATA

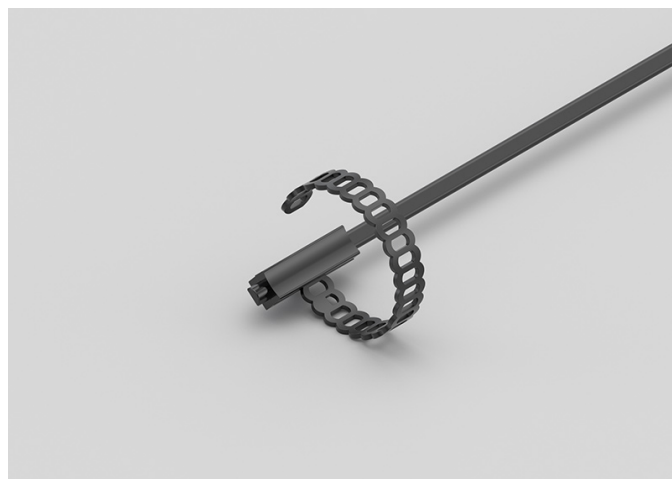
TEMPERATURE RANGE	(-50 +120)°C
MODEL	Bracelet
SENSOR	PTC
CAPSULE	6x6x15 mm + copper plate
CABLE	TPE flat
TERMINITIONS	Tin-plated, tips, connectors (other terminations available on request)
RESPONSE TIME	10 s in non-static liquid at 63.2% (depends on configuration)
IDENTIFICATION	Laser on cable, label (customizable)
DECLARATIONS OF CONFORMITY	CE MARKING, CONFLICT MINERALS, REACH, REACH, ROHS

AEI01C

IP67 RUBBER BRACELET PROBES

PRODUCT FAMILY 30GB07

Probe with bracelet, PTC sensor, TPE flat cable, 6x6x15 mm capsule. Suitable for temperature sensing in laboratory equipment and machinery, in refrigeration and air conditioning applications, in air quality control applications, in heating applications, in the food field and in the industrial field.



TECHNICAL DATA

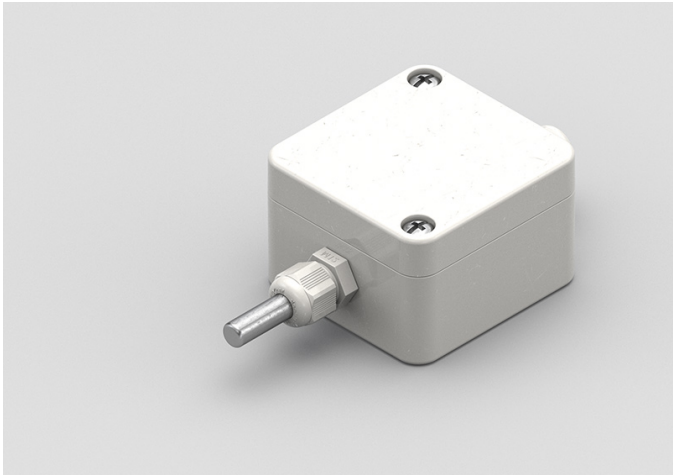
TEMPERATURE RANGE	(-50 +120)°C
MODEL	Bracelet
SENSOR	PTC
CAPSULE	6x6x15 mm
CABLE	TPE flat
TERMINITIONS	Tin-plated, tips, connectors (other terminations available on request)
RESPONSE TIME	10 s in non-static liquid at 63.2% (depends on configuration)
IDENTIFICATION	Laser on cable, label (customizable)
DECLARATIONS OF CONFORMITY	CE MARKING, CONFLICT MINERALS, REACH, REACH, ROHS

APB08R

ENVIRONMENTAL
PROBES WITH STEEL
CAPSULE

PRODUCT FAMILY 50SC05

Enviroment probe with PTC sensor, in PVC cable, diameter 6x40 mm capsule. Suitable for temperature sensing in refrigeration and air conditioning applications, in air quality control applications, in heating applications, in the field of renewable energy and in the food field.



TECHNICAL DATA

TEMPERATURE RANGE	(-30 +80)°C
MODEL	Environment
SENSOR	PTC
CAPSULE	Diameter 6x40 mm
CABLE	PVC
TERMINITIONS	Tin-plated, tips, connectors (other terminations available on request)
RESPONSE TIME	10 s in non-static liquid at 63.2% (depends on configuration)
IDENTIFICATION	Laser on cable, label (customizable)
DECLARATIONS OF CONFORMITY	CE MARKING, CONFLICT MINERALS, REACH, REACH, ROHS

GDB00C

IP68 RUBBER PROBES Ø6X40..50/60 MM STEEL

PRODUCT FAMILY 30GC07

IP68 probe with PT100 sensor, TPE round cable, diameter 6x40 mm capsule. Suitable for temperature sensing in laboratory equipment and machinery, in refrigeration and air conditioning applications, in air quality control applications, in heating applications, in the food field and in the industrial field.



TECHNICAL DATA

TEMPERATURE RANGE	(-50 +110)°C
MODEL	IP68
SENSOR	PT100
CAPSULE	Diameter 6x40 mm
CABLE	TPE round
TERMINITIONS	Tin-plated, tips, connectors (other terminations available on request)
RESPONSE TIME	10 s in non-static liquid at 63.2% (depends on configuration)
IDENTIFICATION	Laser on cable, label (customizable)
DECLARATIONS OF CONFORMITY	CE MARKING, CONFLICT MINERALS, REACH, REACH, ROHS

GEI00C

IP55 COPPER PLATE BRACELET PROBES

PRODUCT FAMILY 30GB15

Probe with bracelet, PT100 sensor, TPE flat cable, 6x6x15 mm + copper plate capsule. Suitable for temperature sensing in laboratory equipment and machinery, in refrigeration and air conditioning applications and in heating applications.



TECHNICAL DATA

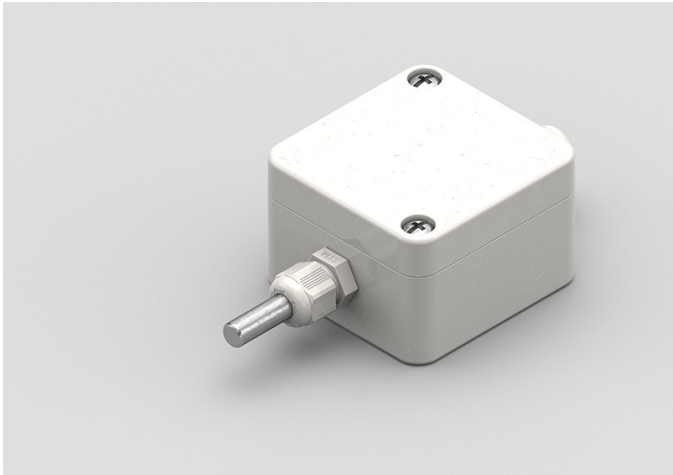
TEMPERATURE RANGE	(-50 +120)°C
MODEL	Bracelet
SENSOR	PT100
CAPSULE	6x6x15 mm + copper plate
CABLE	TPE flat
TERMINITIONS	Tin-plated, tips, connectors (other terminations available on request)
RESPONSE TIME	10 s in non-static liquid at 63.2% (depends on configuration)
IDENTIFICATION	Laser on cable, label (customizable)
DECLARATIONS OF CONFORMITY	CE MARKING, CONFLICT MINERALS, REACH, REACH, ROHS

GPB01R

ENVIRONMENTAL PROBES WITH STEEL CAPSULE

PRODUCT FAMILY 50SC05

Enviroment probe with PT100 sensor, in PVC cable, diameter 6x40 mm capsule. Suitable for temperature sensing in laboratory equipment and machinery, in refrigeration and air conditioning applications and in heating applications.



TECHNICAL DATA

TEMPERATURE RANGE	(-30 +80)°C
MODEL	Environment
SENSOR	PT100
CAPSULE	Diameter 6x40 mm
CABLE	PVC
TERMINITIONS	Tin-plated, tips, connectors (other terminations available on request)
RESPONSE TIME	10 s in non-static liquid at 63.2% (depends on configuration)
IDENTIFICATION	Laser on cable, label (customizable)
DECLARATIONS OF CONFORMITY	CE MARKING, CONFLICT MINERALS, REACH, REACH, ROHS

IDI00C

IP67 COPPER CAPSULE BRACELET PROBES

PRODUCT FAMILY 30GB10

Probe with bracelet, PT1000 sensor, TPE round cable, 6x6x15 mm + copper capsule. Suitable for temperature sensing in refrigeration and air conditioning applications and in heating applications.



TECHNICAL DATA

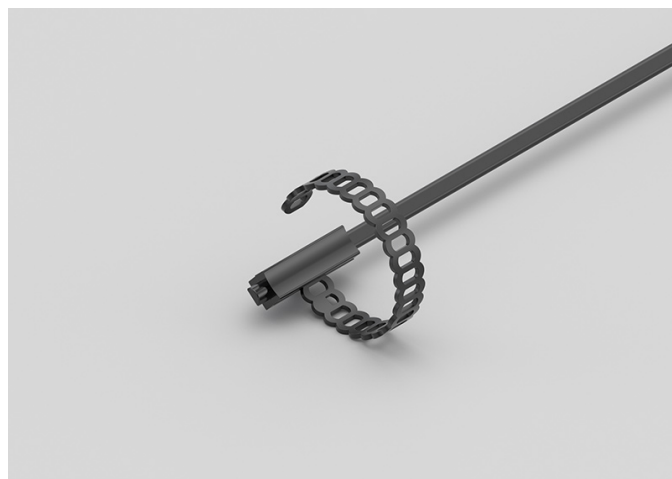
TEMPERATURE RANGE	(-50 +110)°C
MODEL	Bracelet
SENSOR	PT1000
CAPSULE	6x6x15 mm + copper
CABLE	TPE round
TERMINITIONS	Tin-plated, tips, connectors (other terminations available on request)
RESPONSE TIME	10 s in non-static liquid at 63.2% (depends on configuration)
IDENTIFICATION	Laser on cable, label (customizable)
DECLARATIONS OF CONFORMITY	CE MARKING, CONFLICT MINERALS, REACH, REACH, ROHS

IEI00C

IP67 RUBBER BRACELET PROBES

PRODUCT FAMILY 30GB07

Probe with bracelet, PT1000 sensor, TPE flat cable, 6x6x15 mm capsule. Suitable for temperature sensing in laboratory equipment and machinery, in refrigeration and air conditioning applications, in air quality control applications and in heating applications.



TECHNICAL DATA

TEMPERATURE RANGE	(-50 +120)°C
MODEL	Bracelet
SENSOR	PT1000
CAPSULE	6x6x15 mm
CABLE	TPE flat
TERMINITIONS	Tin-plated, tips, connectors (other terminations available on request)
RESPONSE TIME	10 s in non-static liquid at 63.2% (depends on configuration)
IDENTIFICATION	Laser on cable, label (customizable)
DECLARATIONS OF CONFORMITY	CE MARKING, CONFLICT MINERALS, REACH, REACH, ROHS

IEI03C

IP55 COPPER PLATE BRACELET PROBES

PRODUCT FAMILY 30GB15

Probe with bracelet, PT1000 sensor, TPE flat cable, 6x6x15 mm + copper plate capsule. Suitable for temperature sensing in refrigeration and air conditioning applications and in heating applications.



TECHNICAL DATA

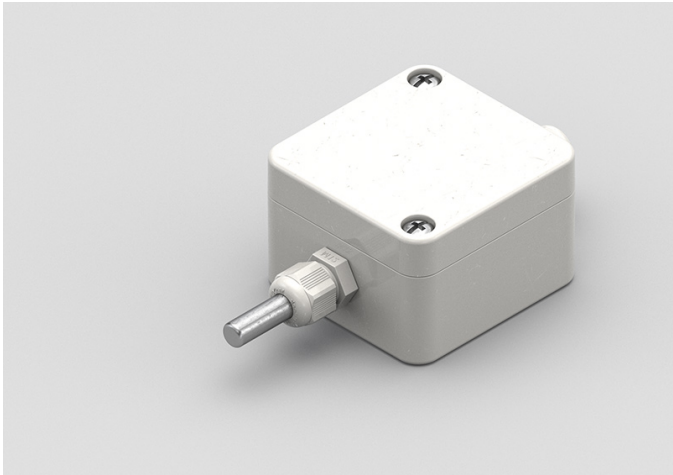
TEMPERATURE RANGE	(-50 +120)°C
MODEL	Bracelet
SENSOR	PT1000
CAPSULE	6x6x15 mm + copper plate
CABLE	TPE flat
TERMINITIONS	Tin-plated, tips, connectors (other terminations available on request)
RESPONSE TIME	10 s in non-static liquid at 63.2% (depends on configuration)
IDENTIFICATION	Laser on cable, label (customizable)
DECLARATIONS OF CONFORMITY	CE MARKING, CONFLICT MINERALS, REACH, REACH, ROHS

IPB03R

ENVIRONMENTAL
PROBES WITH STEEL
CAPSULE

PRODUCT FAMILY 50SC05

Enviroment probe with PT1000 sensor, in PVC cable, diameter 6x40 mm capsule. Suitable for temperature sensing in refrigeration and air conditioning applications and in heating applications.



TECHNICAL DATA

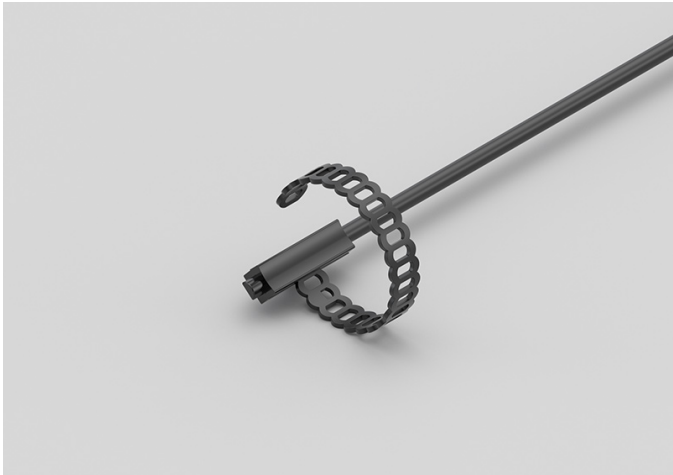
TEMPERATURE RANGE	(-30 +80)°C
MODEL	Environment
SENSOR	PT1000
CAPSULE	Diameter 6x40 mm
CABLE	PVC
TERMINITIONS	Tin-plated, tips, connectors (other terminations available on request)
RESPONSE TIME	10 s in non-static liquid at 63.2% (depends on configuration)
IDENTIFICATION	Laser on cable, label (customizable)
DECLARATIONS OF CONFORMITY	CE MARKING, CONFLICT MINERALS, REACH, REACH, ROHS

NDI00C

IP68 RUBBER BRACELET PROBES

PRODUCT FAMILY 30GB05

Probe with bracelet, NTC sensor, TPE round cable, 6x6x15 mm capsule. Suitable for temperature sensing in refrigeration and air conditioning applications, in heating applications and in the field of renewable energy.



TECHNICAL DATA

TEMPERATURE RANGE	(-50 +110)°C
MODEL	Bracelet
SENSOR	NTC
CAPSULE	6x6x15 mm
CABLE	TPE round
TERMINITIONS	Tin-plated, tips, connectors (other terminations available on request)
RESPONSE TIME	10 s in non-static liquid at 63.2% (depends on configuration)
IDENTIFICATION	Laser on cable, label (customizable)
DECLARATIONS OF CONFORMITY	CE MARKING, CONFLICT MINERALS, REACH, REACH, ROHS

NDI01C

IP67 COPPER CAPSULE
BRACELET PROBES

PRODUCT FAMILY 30GB10

Probe with bracelet, NTC sensor, TPE round cable, 6x6x15 mm + copper capsule. Suitable for temperature sensing in refrigeration and air conditioning applications, in heating applications and in the field of renewable energy.



TECHNICAL DATA

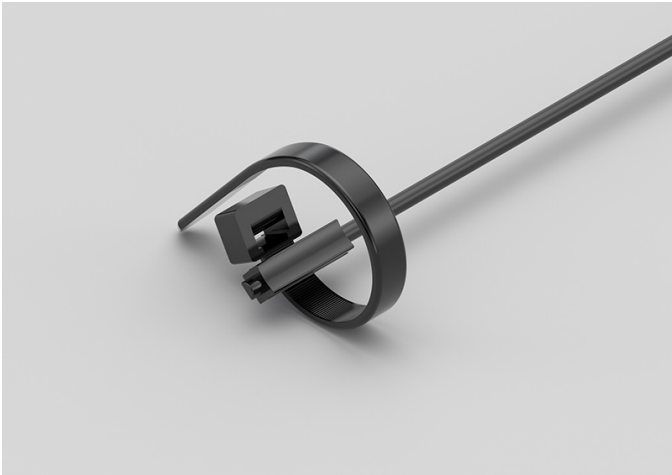
TEMPERATURE RANGE	(-50 +110)°C
MODEL	Bracelet
SENSOR	NTC
CAPSULE	6x6x15 mm + copper
CABLE	TPE round
TERMINITIONS	Tin-plated, tips, connectors (other terminations available on request)
RESPONSE TIME	10 s in non-static liquid at 63.2% (depends on configuration)
IDENTIFICATION	Laser on cable, label (customizable)
DECLARATIONS OF CONFORMITY	CE MARKING, CONFLICT MINERALS, REACH, REACH, ROHS

NDI06C

IP68 RUBBER BRACELET
PROBE WITH METAL
CLAMP

PRODUCT FAMILY 30GB06

Probe with bracelet, NTC sensor, TPE round cable, 6x6x15 mm capsule. Suitable for temperature sensing in refrigeration and air conditioning applications, in heating applications and in the field of renewable energy.



TECHNICAL DATA

TEMPERATURE RANGE	(-50 +110)°C
MODEL	Bracelet
SENSOR	NTC
CAPSULE	6x6x15 mm
CABLE	TPE round
TERMINITIONS	Tin-plated, tips, connectors (other terminations available on request)
RESPONSE TIME	10 s in non-static liquid at 63.2% (depends on configuration)
IDENTIFICATION	Laser on cable, label (customizable)
DECLARATIONS OF CONFORMITY	CE MARKING, CONFLICT MINERALS, REACH, REACH, ROHS

NDM01C

PROBES WITH WELDED THREADED CONNECTION

PRODUCT FAMILY 15CR05

Probe with connector, NTC sensor, TPE round cable, diameter 4x40 mm capsule. Suitable for temperature sensing in refrigeration and air conditioning applications, in heating applications and in the field of renewable energy.



TECHNICAL DATA

TEMPERATURE RANGE	(-50 +110)°C
MODEL	With connector
SENSOR	NTC
CAPSULE	Diameter 4x40 mm
CABLE	TPE round
TERMINITIONS	Tin-plated, tips, connectors (other terminations available on request)
RESPONSE TIME	10 s in non-static liquid at 63.2% (depends on configuration)
IDENTIFICATION	Laser on cable, label (customizable)
DECLARATIONS OF CONFORMITY	CE MARKING, CONFLICT MINERALS, REACH, REACH, ROHS

NDU01C

PROBES WITH FAST METAL CAPSULE

PRODUCT FAMILY 15CA10

Probe with steel capsule, NTC sensor, TPE round cable, diameter 4x40 mm capsule. Suitable for temperature sensing in refrigeration and air conditioning applications, in air quality control applications, in heating applications, in the field of renewable energy and in the food field.



TECHNICAL DATA

TEMPERATURE RANGE	(-50 +110)°C
MODEL	Steel capsule
SENSOR	NTC
CAPSULE	Diameter 4x40 mm
CABLE	TPE round
TERMINITIONS	Tin-plated, tips, connectors (other terminations available on request)
RESPONSE TIME	10 s in non-static liquid at 63.2% (depends on configuration)
IDENTIFICATION	Laser on cable, label (customizable)
DECLARATIONS OF CONFORMITY	CE MARKING, CONFLICT MINERALS, MOCA, REACH, REACH, ROHS

NEH00C

IP67 RUBBER PROBES
Ø6X20 MM STEEL
CAPSULE

PRODUCT FAMILY 30GC12

IP67 probe with NTC sensor, TPE flat cable, diameter 6x20 mm capsule. Suitable for temperature sensing in refrigeration and air conditioning applications, in air quality control applications, in heating applications and in the food field.



TECHNICAL DATA

TEMPERATURE RANGE	(-50 +120)°C
MODEL	IP67
SENSOR	NTC
CAPSULE	Diameter 6x20 mm
CABLE	TPE flat
TERMINITIONS	Tin-plated, tips, connectors (other terminations available on request)
RESPONSE TIME	10 s in non-static liquid at 63.2% (depends on configuration)
IDENTIFICATION	Laser on cable, label (customizable)
DECLARATIONS OF CONFORMITY	CE MARKING, CONFLICT MINERALS, REACH, REACH, ROHS

NEI01C

IP55 COPPER PLATE BRACELET PROBES

PRODUCT FAMILY 30GB15

Probe with bracelet, NTC sensor, TPE flat cable, 6x6x15 mm + copper plate capsule. Suitable for temperature sensing in refrigeration and air conditioning applications, in air quality control applications, in heating applications and in the field of renewable energy.



TECHNICAL DATA

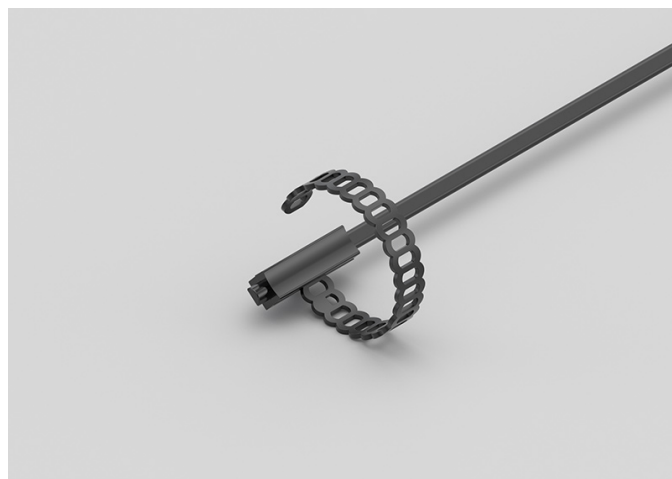
TEMPERATURE RANGE	(-50 +120)°C
MODEL	Bracelet
SENSOR	NTC
CAPSULE	6x6x15 mm + copper plate
CABLE	TPE flat
TERMINITIONS	Tin-plated, tips, connectors (other terminations available on request)
RESPONSE TIME	10 s in non-static liquid at 63.2% (depends on configuration)
IDENTIFICATION	Laser on cable, label (customizable)
DECLARATIONS OF CONFORMITY	CE MARKING, CONFLICT MINERALS, REACH, REACH, ROHS

NEI02C

IP67 RUBBER BRACELET PROBES

PRODUCT FAMILY 30GB07

Probe with bracelet, NTC sensor, TPE flat cable, 6x6x15 mm capsule. Suitable for temperature sensing in laboratory equipment and machinery, in refrigeration and air conditioning applications, in air quality control applications and in heating applications.



TECHNICAL DATA

TEMPERATURE RANGE	(-50 +120)°C
MODEL	Bracelet
SENSOR	NTC
CAPSULE	6x6x15 mm
CABLE	TPE flat
TERMINITIONS	Tin-plated, tips, connectors (other terminations available on request)
RESPONSE TIME	10 s in non-static liquid at 63.2% (depends on configuration)
IDENTIFICATION	Laser on cable, label (customizable)
DECLARATIONS OF CONFORMITY	CE MARKING, CONFLICT MINERALS, REACH, REACH, ROHS

NEK00C

IP67 RUBBER PROBES

Ø5X20 MM RUBBER CAPSULE

PRODUCT FAMILY 30GC11

IP67 probe with NTC sensor, TPE flat cable, diameter 5x20 mm capsule. Suitable for temperature sensing in refrigeration and air conditioning applications, in air quality control applications, in heating applications and in the food field.



TECHNICAL DATA

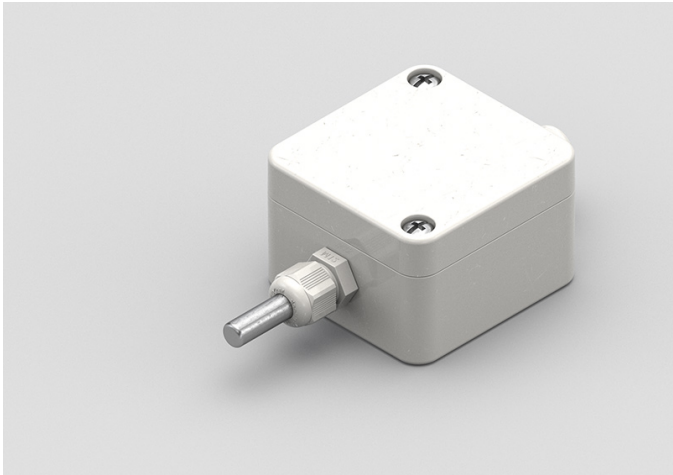
TEMPERATURE RANGE	(-50 +120)°C
MODEL	IP67
SENSOR	NTC
CAPSULE	Diameter 5x20 mm
CABLE	TPE flat
TERMINITIONS	Tin-plated, tips, connectors (other terminations available on request)
RESPONSE TIME	10 s in non-static liquid at 63.2% (depends on configuration)
IDENTIFICATION	Laser on cable, label (customizable)
DECLARATIONS OF CONFORMITY	CE MARKING, CONFLICT MINERALS, REACH, REACH, ROHS

NPB13R

ENVIRONMENTAL
PROBES WITH STEEL
CAPSULE

PRODUCT FAMILY 50SC05

Enviroment probe with NTC sensor, in PVC cable, diameter 6x40 mm capsule. Suitable for temperature sensing in heating applications and in the food field.



TECHNICAL DATA

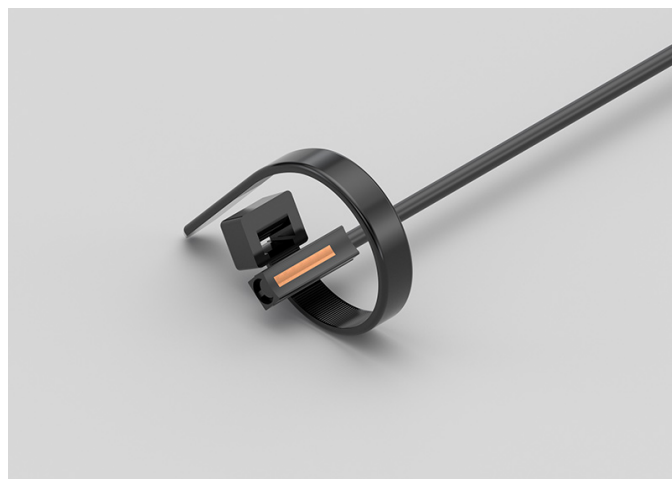
TEMPERATURE RANGE	(-30 +80)°C
MODEL	Environment
SENSOR	NTC
CAPSULE	Diameter 6x40 mm
CABLE	PVC
TERMINITIONS	Tin-plated, tips, connectors (other terminations available on request)
RESPONSE TIME	10 s in non-static liquid at 63.2% (depends on configuration)
IDENTIFICATION	Laser on cable, label (customizable)
DECLARATIONS OF CONFORMITY	CE MARKING, CONFLICT MINERALS, REACH, REACH, ROHS

ADI02C

IP67 COPPER CAPSULE BRACELET PROBES WITH METAL CLAMP

PRODUCT FAMILY 30GB11

Probe with bracelet, PTC sensor, TPE round cable, 6x6x15 mm + copper capsule. Suitable for temperature sensing in heating applications, in the field of renewable energy and in the food field.



TECHNICAL DATA

TEMPERATURE RANGE	(-50 +110)°C
MODEL	Bracelet
SENSOR	PTC
CAPSULE	6x6x15 mm + copper
CABLE	TPE round
TERMINITIONS	Tin-plated, tips, connectors (other terminations available on request)
RESPONSE TIME	10 s in non-static liquid at 63.2% (depends on configuration)
IDENTIFICATION	Laser on cable, label (customizable)
DECLARATIONS OF CONFORMITY	CE MARKING, CONFLICT MINERALS, REACH, REACH, ROHS

ADI03C

IP67 COPPER CAPSULE
BRACELET PROBES

PRODUCT FAMILY 30GB10

Probe with bracelet, PTC sensor, TPE round cable, 6x6x15 mm + copper capsule. Suitable for temperature sensing in heating applications, in the field of renewable energy and in the food field.



TECHNICAL DATA

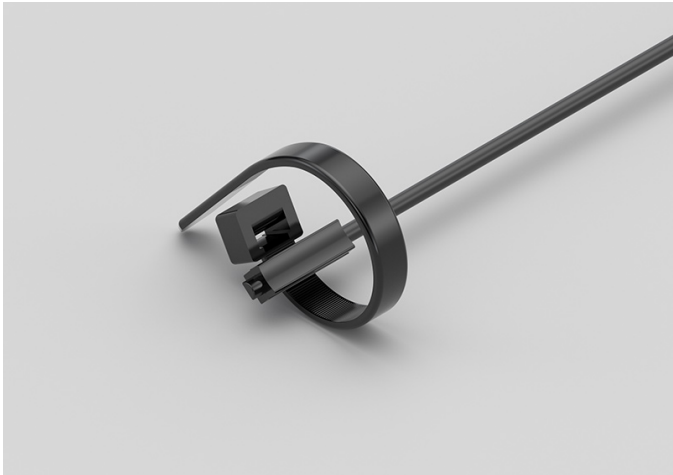
TEMPERATURE RANGE	(-50 +110)°C
MODEL	Bracelet
SENSOR	PTC
CAPSULE	6x6x15 mm + copper
CABLE	TPE round
TERMINITIONS	Tin-plated, tips, connectors (other terminations available on request)
RESPONSE TIME	10 s in non-static liquid at 63.2% (depends on configuration)
IDENTIFICATION	Laser on cable, label (customizable)
DECLARATIONS OF CONFORMITY	CE MARKING, CONFLICT MINERALS, REACH, REACH, ROHS

ADI04C

IP68 RUBBER BRACELET
PROBE WITH METAL
CLAMP

PRODUCT FAMILY 30GB06

Probe with bracelet, PTC sensor, TPE round cable, 6x6x15 mm capsule. Suitable for temperature sensing in laboratory equipment and machinery, in heating applications, in the field of renewable energy and in the food field.



TECHNICAL DATA

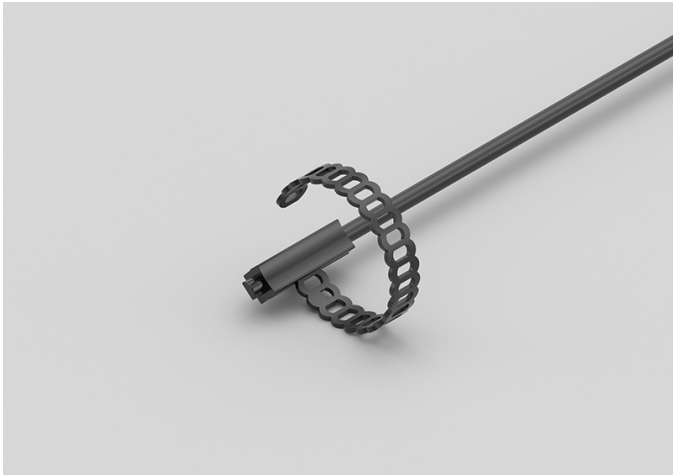
TEMPERATURE RANGE	(-50 +110)°C
MODEL	Bracelet
SENSOR	PTC
CAPSULE	6x6x15 mm
CABLE	TPE round
TERMINITIONS	Tin-plated, tips, connectors (other terminations available on request)
RESPONSE TIME	10 s in non-static liquid at 63.2% (depends on configuration)
IDENTIFICATION	Laser on cable, label (customizable)
DECLARATIONS OF CONFORMITY	CE MARKING, CONFLICT MINERALS, REACH, REACH, ROHS

ADI05C

IP68 RUBBER BRACELET PROBES

PRODUCT FAMILY 30GB05

Probe with bracelet, PTC sensor, TPE round cable, 6x6x15 mm capsule. Suitable for temperature sensing in laboratory equipment and machinery, in heating applications, in the field of renewable energy and in the food field.



TECHNICAL DATA

TEMPERATURE RANGE	(-50 +110)°C
MODEL	Bracelet
SENSOR	PTC
CAPSULE	6x6x15 mm
CABLE	TPE round
TERMINITIONS	Tin-plated, tips, connectors (other terminations available on request)
RESPONSE TIME	10 s in non-static liquid at 63.2% (depends on configuration)
IDENTIFICATION	Laser on cable, label (customizable)
DECLARATIONS OF CONFORMITY	CE MARKING, CONFLICT MINERALS, REACH, REACH, ROHS

ADM00C

PROBES WITH SLIDING THREADED CONNECTION

PRODUCT FAMILY 15CR10

Probe with connector, PTC sensor, TPE round cable, diameter 4x40 mm capsule. Suitable for temperature sensing in heating applications, in the field of renewable energy and in the food field.



TECHNICAL DATA

TEMPERATURE RANGE	(-50 +110)°C
MODEL	With connector
SENSOR	PTC
CAPSULE	Diameter 4x40 mm
CABLE	TPE round
TERMINITIONS	Tin-plated, tips, connectors (other terminations available on request)
RESPONSE TIME	10 s in non-static liquid at 63.2% (depends on configuration)
IDENTIFICATION	Laser on cable, label (customizable)
DECLARATIONS OF CONFORMITY	CE MARKING, CONFLICT MINERALS, REACH, REACH, ROHS

ADM01C

PROBES WITH WELDED THREADED CONNECTION

PRODUCT FAMILY 15CR05

Probe with connector, PTC sensor, TPE round cable, diameter 4x40 mm capsule. Suitable for temperature sensing in laboratory equipment and machinery, in refrigeration and air conditioning applications, in heating applications, in the field of renewable energy, in the food field and in the industrial field.



TECHNICAL DATA

TEMPERATURE RANGE	(-50 +110)°C
MODEL	With connector
SENSOR	PTC
CAPSULE	Diameter 4x40 mm
CABLE	TPE round
TERMINITIONS	Tin-plated, tips, connectors (other terminations available on request)
RESPONSE TIME	10 s in non-static liquid at 63.2% (depends on configuration)
IDENTIFICATION	Laser on cable, label (customizable)
DECLARATIONS OF CONFORMITY	CE MARKING, CONFLICT MINERALS, REACH, REACH, ROHS

ADU06C

PROBES WITH FAST METAL CAPSULE

PRODUCT FAMILY 15CA10

Probe with steel capsule, PTC sensor, TPE round cable, diameter 4x40 mm capsule. Suitable for temperature sensing in laboratory equipment and machinery, in heating applications, in the field of renewable energy and in the food field.



TECHNICAL DATA

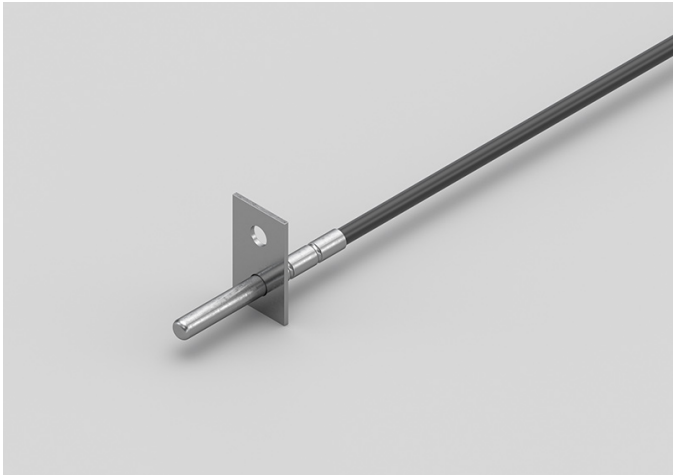
TEMPERATURE RANGE	(-50 +110)°C
MODEL	Steel capsule
SENSOR	PTC
CAPSULE	Diameter 4x40 mm
CABLE	TPE round
TERMINITIONS	Tin-plated, tips, connectors (other terminations available on request)
RESPONSE TIME	10 s in non-static liquid at 63.2% (depends on configuration)
IDENTIFICATION	Laser on cable, label (customizable)
DECLARATIONS OF CONFORMITY	CE MARKING, CONFLICT MINERALS, MOCA, REACH, REACH, ROHS

ADU07C

METAL CAPSULE PROBES WITH FLANGE

PRODUCT FAMILY 15CA25

Contact probe with PTC sensor, TPE round cable, diameter 4x40 mm capsule. Suitable for temperature sensing in laboratory equipment and machinery, in heating applications, in the field of renewable energy and in the food field.



TECHNICAL DATA

TEMPERATURE RANGE	(-50 +110)°C
MODEL	Contact
SENSOR	PTC
CAPSULE	Diameter 4x40 mm
CABLE	TPE round
TERMINITIONS	Tin-plated, tips, connectors (other terminations available on request)
RESPONSE TIME	10 s in non-static liquid at 63.2% (depends on configuration)
IDENTIFICATION	Laser on cable, label (customizable)
DECLARATIONS OF CONFORMITY	CE MARKING, CONFLICT MINERALS, REACH, REACH, ROHS

ADU08C

STANDARD EYELET PROBES

PRODUCT FAMILY 15C005

Contact probe with PTC sensor, TPE round cable, diameter 4x40 mm capsule. Suitable for temperature sensing in refrigeration and air conditioning applications, in air quality control applications and in the food field.



TECHNICAL DATA

TEMPERATURE RANGE	(-50 +110)°C
MODEL	Contact
SENSOR	PTC
CAPSULE	Diameter 4x40 mm
CABLE	TPE round
TERMINITIONS	Tin-plated, tips, connectors (other terminations available on request)
RESPONSE TIME	10 s in non-static liquid at 63.2% (depends on configuration)
IDENTIFICATION	Laser on cable, label (customizable)
DECLARATIONS OF CONFORMITY	CE MARKING, CONFLICT MINERALS, REACH, REACH, ROHS

AEB00C

IP67 RUBBER PROBES
Ø6X40..50/60 MM STEEL
CAPSULE

PRODUCT FAMILY 30GC13

IP67 probe with PTC sensor, TPE flat cable, diameter 6x40 mm capsule. Suitable for temperature sensing in laboratory equipment and machinery, in refrigeration and air conditioning applications, in air quality control applications and in the food field.



TECHNICAL DATA

TEMPERATURE RANGE	(-50 +120)°C
MODEL	IP67
SENSOR	PTC
CAPSULE	Diameter 6x40 mm
CABLE	TPE flat
TERMINITIONS	Tin-plated, tips, connectors (other terminations available on request)
RESPONSE TIME	10 s in non-static liquid at 63.2% (depends on configuration)
IDENTIFICATION	Laser on cable, label (customizable)
DECLARATIONS OF CONFORMITY	CE MARKING, CONFLICT MINERALS, REACH, REACH, ROHS

AEE00C

IP67 RUBBER PROBES

6X6X15 MM RUBBER CAPSULE

PRODUCT FAMILY 30GC10

IP67 probe with PTC sensor, TPE flat cable, 1,5x5x6 mm capsule. Suitable for temperature sensing in laboratory equipment and machinery, in refrigeration and air conditioning applications, in air quality control applications and in the food field.



TECHNICAL DATA

TEMPERATURE RANGE	(-50 +120)°C
MODEL	IP67
SENSOR	PTC
CAPSULE	1,5x5x6 mm
CABLE	TPE flat
TERMINITIONS	Tin-plated, tips, connectors (other terminations available on request)
RESPONSE TIME	10 s in non-static liquid at 63.2% (depends on configuration)
IDENTIFICATION	Laser on cable, label (customizable)
DECLARATIONS OF CONFORMITY	CE MARKING, CONFLICT MINERALS, REACH, REACH, ROHS

AEH03C

IP67 RUBBER PROBES Ø6X40..50/60 MM STEEL CAPSULE

PRODUCT FAMILY 30GC13

IP67 probe with PTC sensor, TPE flat cable, diameter 6x50 mm capsule. Suitable for temperature sensing in refrigeration and air conditioning applications, in air quality control applications, in heating applications and in the food field.



TECHNICAL DATA

TEMPERATURE RANGE	(-50 +120)°C
MODEL	IP67
SENSOR	PTC
CAPSULE	Diameter 6x50 mm
CABLE	TPE flat
TERMINITIONS	Tin-plated, tips, connectors (other terminations available on request)
RESPONSE TIME	10 s in non-static liquid at 63.2% (depends on configuration)
IDENTIFICATION	Laser on cable, label (customizable)
DECLARATIONS OF CONFORMITY	CE MARKING, CONFLICT MINERALS, REACH, REACH, ROHS

AEH04C

IP67 RUBBER PROBES

Ø6X20 MM STEEL CAPSULE

PRODUCT FAMILY 30GC12

IP67 probe with PTC sensor, TPE flat cable, diameter 6x20 mm capsule. Suitable for temperature sensing in refrigeration and air conditioning applications, in air quality control applications, in heating applications and in the food field.



TECHNICAL DATA

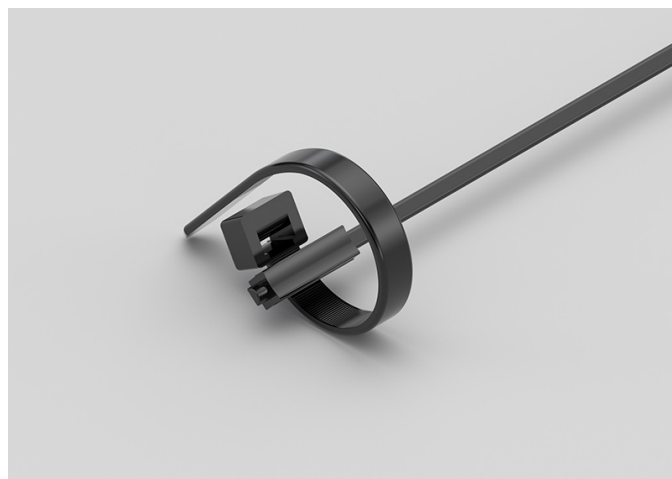
TEMPERATURE RANGE	(-50 +120)°C
MODEL	IP67
SENSOR	PTC
CAPSULE	Diameter 6x20 mm
CABLE	TPE flat
TERMINITIONS	Tin-plated, tips, connectors (other terminations available on request)
RESPONSE TIME	10 s in non-static liquid at 63.2% (depends on configuration)
IDENTIFICATION	Laser on cable, label (customizable)
DECLARATIONS OF CONFORMITY	CE MARKING, CONFLICT MINERALS, REACH, REACH, ROHS

AEI03C

IP67 RUBBER BRACELET PROBES WITH METAL CLAMP

PRODUCT FAMILY 30GB08

Probe with bracelet, PTC sensor, TPE flat cable, 6x6x15 mm capsule. Suitable for temperature sensing in laboratory equipment and machinery, in heating applications and in the food field.



TECHNICAL DATA

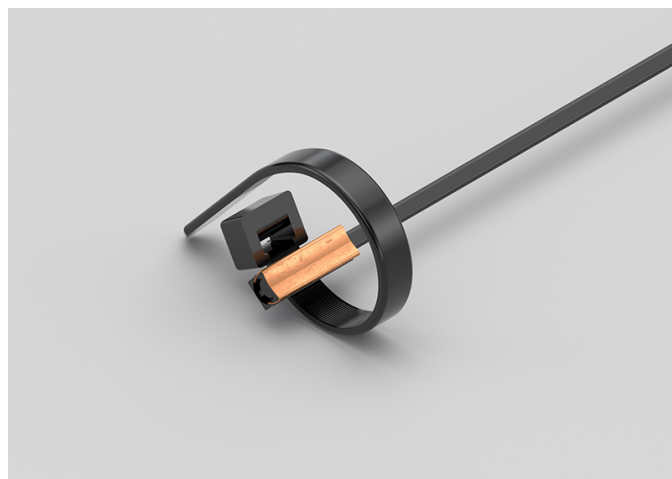
TEMPERATURE RANGE	(-50 +120)°C
MODEL	Bracelet
SENSOR	PTC
CAPSULE	6x6x15 mm
CABLE	TPE flat
TERMINITIONS	Tin-plated, tips, connectors (other terminations available on request)
RESPONSE TIME	10 s in non-static liquid at 63.2% (depends on configuration)
IDENTIFICATION	Laser on cable, label (customizable)
DECLARATIONS OF CONFORMITY	CE MARKING, CONFLICT MINERALS, REACH, REACH, ROHS

AEI04C

IP55 COPPER PLATE BRACELET PROBES WITH METAL CLAMP

PRODUCT FAMILY 30GB16

Probe with bracelet, PTC sensor, TPE flat cable, 6x6x15 mm + copper plate capsule. Suitable for temperature sensing in laboratory equipment and machinery, in heating applications and in the food field.



TECHNICAL DATA

TEMPERATURE RANGE	(-50 +120)°C
MODEL	Bracelet
SENSOR	PTC
CAPSULE	6x6x15 mm + copper plate
CABLE	TPE flat
TERMINITIONS	Tin-plated, tips, connectors (other terminations available on request)
RESPONSE TIME	10 s in non-static liquid at 63.2% (depends on configuration)
IDENTIFICATION	Laser on cable, label (customizable)
DECLARATIONS OF CONFORMITY	CE MARKING, CONFLICT MINERALS, REACH, REACH, ROHS

AEK00C

IP67 RUBBER PROBES

Ø5X20 MM RUBBER CAPSULE

PRODUCT FAMILY 30GC11

IP67 probe with PTC sensor, TPE flat cable, diameter 5x20 mm capsule. Suitable for temperature sensing in heating applications and in the food field.



TECHNICAL DATA

TEMPERATURE RANGE	(-50 +120)°C
MODEL	IP67
SENSOR	PTC
CAPSULE	Diameter 5x20 mm
CABLE	TPE flat
TERMINITIONS	Tin-plated, tips, connectors (other terminations available on request)
RESPONSE TIME	10 s in non-static liquid at 63.2% (depends on configuration)
IDENTIFICATION	Laser on cable, label (customizable)
DECLARATIONS OF CONFORMITY	CE MARKING, CONFLICT MINERALS, REACH, REACH, ROHS

APB08C

PROBES WITH STANDARD METAL CAPSULE

PRODUCT FAMILY 15CA05

Probe with steel capsule, PTC sensor, in PVC cable, diameter 6x40 mm capsule. Suitable for temperature sensing in refrigeration and air conditioning applications, in air quality control applications, in heating applications and in the food field.



TECHNICAL DATA

TEMPERATURE RANGE	(-30 +105)°C
MODEL	Steel capsule
SENSOR	PTC
CAPSULE	Diameter 6x40 mm
CABLE	PVC
TERMINITIONS	Tin-plated, tips, connectors (other terminations available on request)
RESPONSE TIME	10 s in non-static liquid at 63.2% (depends on configuration)
IDENTIFICATION	Laser on cable, label (customizable)
DECLARATIONS OF CONFORMITY	CE MARKING, CONFLICT MINERALS, MOCA, REACH, REACH, ROHS

APB11C

STANDARD EYELET PROBES

PRODUCT FAMILY 15C005

Contact probe with PTC sensor, in PVC cable, diameter 6x40 mm capsule. Suitable for temperature sensing in refrigeration and air conditioning applications, in air quality control applications, in heating applications and in the food field.



TECHNICAL DATA

TEMPERATURE RANGE	(-30 +105)°C
MODEL	Contact
SENSOR	PTC
CAPSULE	Diameter 6x40 mm
CABLE	PVC
TERMINITIONS	Tin-plated, tips, connectors (other terminations available on request)
RESPONSE TIME	10 s in non-static liquid at 63.2% (depends on configuration)
IDENTIFICATION	Laser on cable, label (customizable)
DECLARATIONS OF CONFORMITY	CE MARKING, CONFLICT MINERALS, REACH, REACH, ROHS

APB12C

METAL CAPSULE PROBES
WITH FLANGE

PRODUCT FAMILY 15CA25

Contact probe with PTC sensor, in PVC cable, diameter 6x40 mm capsule. Suitable for temperature sensing in refrigeration and air conditioning applications, in air quality control applications, in heating applications and in the food field.



TECHNICAL DATA

TEMPERATURE RANGE	(-30 +105)°C
MODEL	Contact
SENSOR	PTC
CAPSULE	Diameter 6x40 mm
CABLE	PVC
TERMINITIONS	Tin-plated, tips, connectors (other terminations available on request)
RESPONSE TIME	10 s in non-static liquid at 63.2% (depends on configuration)
IDENTIFICATION	Laser on cable, label (customizable)
DECLARATIONS OF CONFORMITY	CE MARKING, CONFLICT MINERALS, REACH, REACH, ROHS

APG04R

ENVIRONMENTAL
PROBES WITH
PERFORATED CAPSULE

PRODUCT FAMILY 50SC15

Enviroment probe with PTC sensor, in PVC cable, diameter 6X100 mm capsule. Suitable for temperature sensing in refrigeration and air conditioning applications, in air quality control applications, in heating applications, in the field of renewable energy and in the food field.



TECHNICAL DATA

TEMPERATURE RANGE	(0 +70)°C
MODEL	Environment
SENSOR	PTC
CAPSULE	Diameter 6X100 mm
CABLE	PVC
TERMINITIONS	Tin-plated, tips, connectors (other terminations available on request)
RESPONSE TIME	10 s in non-static liquid at 63.2% (depends on configuration)
IDENTIFICATION	Laser on cable, label (customizable)
DECLARATIONS OF CONFORMITY	CE MARKING, CONFLICT MINERALS, REACH, REACH, ROHS

APM01C

PROBES WITH WELDED
THREADED CONNECTION

PRODUCT FAMILY 15CR05

Probe with connector, PTC sensor, in PVC cable, diameter 4x40 mm capsule. Suitable for temperature sensing in refrigeration and air conditioning applications, in air quality control applications and in the food field.



TECHNICAL DATA

TEMPERATURE RANGE	(-30 +80)°C
MODEL	With connector
SENSOR	PTC
CAPSULE	Diameter 4x40 mm
CABLE	PVC
TERMINITIONS	Tin-plated, tips, connectors (other terminations available on request)
RESPONSE TIME	10 s in non-static liquid at 63.2% (depends on configuration)
IDENTIFICATION	Laser on cable, label (customizable)
DECLARATIONS OF CONFORMITY	CE MARKING, CONFLICT MINERALS, REACH, REACH, ROHS

APM04C

PROBES WITH SLIDING
THREADED CONNECTION

PRODUCT FAMILY 15CR10

Probe with connector, PTC sensor, in PVC cable, diameter 4x40 mm capsule. Suitable for temperature sensing in heating applications and in the food field.



TECHNICAL DATA

TEMPERATURE RANGE	(-30 +80)°C
MODEL	With connector
SENSOR	PTC
CAPSULE	Diameter 4x40 mm
CABLE	PVC
TERMINITIONS	Tin-plated, tips, connectors (other terminations available on request)
RESPONSE TIME	10 s in non-static liquid at 63.2% (depends on configuration)
IDENTIFICATION	Laser on cable, label (customizable)
DECLARATIONS OF CONFORMITY	CE MARKING, CONFLICT MINERALS, REACH, REACH, ROHS

APR00C

PROBES WITH TAPERED METAL CAPSULE

PRODUCT FAMILY 15CA20

Probe with steel capsule, PTC sensor, in PVC cable, diameter 3X15 mm + diameter 6X40 mm capsule. Suitable for temperature sensing in laboratory equipment and machinery, in heating applications and in the food field.



TECHNICAL DATA

TEMPERATURE RANGE	(-30 +105)°C
MODEL	Steel capsule
SENSOR	PTC
CAPSULE	Diameter 3X15 mm + Diameter 6X40 mm
CABLE	PVC
TERMINITIONS	Tin-plated, tips, connectors (other terminations available on request)
RESPONSE TIME	10 s in non-static liquid at 63.2% (depends on configuration)
IDENTIFICATION	Laser on cable, label (customizable)
DECLARATIONS OF CONFORMITY	CE MARKING, CONFLICT MINERALS, REACH, REACH, ROHS

APU01C

STANDARD EYELET PROBES

PRODUCT FAMILY 15C005

Contact probe with PTC sensor, in PVC cable, diameter 4x40 mm capsule. Suitable for temperature sensing in laboratory equipment and machinery, in refrigeration and air conditioning applications, in heating applications, in the food field and in the industrial field.



TECHNICAL DATA

TEMPERATURE RANGE	(-30 +80)°C
MODEL	Contact
SENSOR	PTC
CAPSULE	Diameter 4x40 mm
CABLE	PVC
TERMINITIONS	Tin-plated, tips, connectors (other terminations available on request)
RESPONSE TIME	10 s in non-static liquid at 63.2% (depends on configuration)
IDENTIFICATION	Laser on cable, label (customizable)
DECLARATIONS OF CONFORMITY	CE MARKING, CONFLICT MINERALS, REACH, REACH, ROHS

APU02C

METAL CAPSULE PROBES WITH FLANGE

PRODUCT FAMILY 15CA25

Contact probe with PTC sensor, in PVC cable, diameter 4x40 mm capsule. Suitable for temperature sensing in laboratory equipment and machinery, in refrigeration and air conditioning applications, in heating applications, in the food field and in the industrial field.



TECHNICAL DATA

TEMPERATURE RANGE	(-30 +80)°C
MODEL	Contact
SENSOR	PTC
CAPSULE	Diameter 4x40 mm
CABLE	PVC
TERMINITIONS	Tin-plated, tips, connectors (other terminations available on request)
RESPONSE TIME	10 s in non-static liquid at 63.2% (depends on configuration)
IDENTIFICATION	Laser on cable, label (customizable)
DECLARATIONS OF CONFORMITY	CE MARKING, CONFLICT MINERALS, REACH, REACH, ROHS

APU03C

PROBES WITH FAST METAL CAPSULE

PRODUCT FAMILY 15CA10

Probe with steel capsule, PTC sensor, in PVC cable, diameter 4x40 mm capsule. Suitable for temperature sensing in heating applications and in the food field.



TECHNICAL DATA

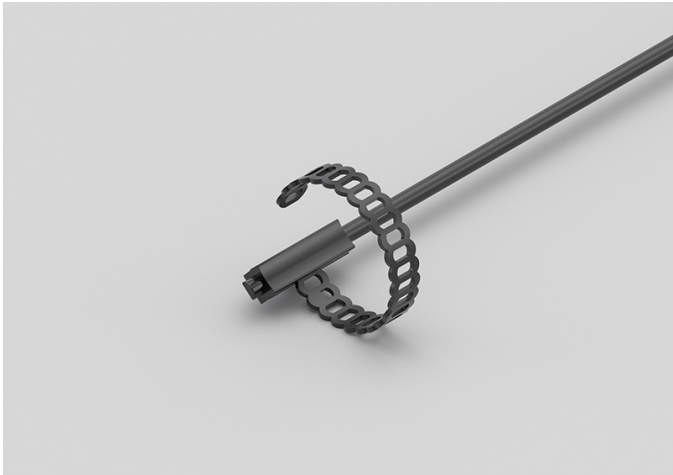
TEMPERATURE RANGE	(-30 +80)°C
MODEL	Steel capsule
SENSOR	PTC
CAPSULE	Diameter 4x40 mm
CABLE	PVC
TERMINITIONS	Tin-plated, tips, connectors (other terminations available on request)
RESPONSE TIME	10 s in non-static liquid at 63.2% (depends on configuration)
IDENTIFICATION	Laser on cable, label (customizable)
DECLARATIONS OF CONFORMITY	CE MARKING, CONFLICT MINERALS, MOCA, REACH, REACH, ROHS

GDI03C

IP68 RUBBER BRACELET PROBES

PRODUCT FAMILY 30GB05

Probe with bracelet, PT100 sensor, TPE round cable, 6x6x15 mm capsule. Suitable for temperature sensing in laboratory equipment and machinery, in heating applications and in the food field.



TECHNICAL DATA

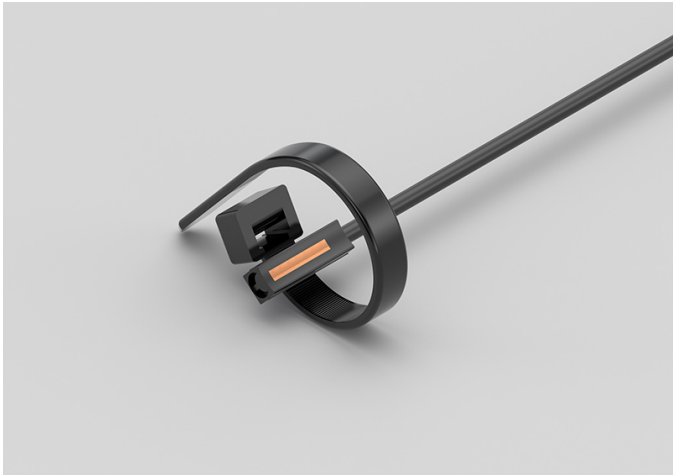
TEMPERATURE RANGE	(-50 +110)°C
MODEL	Bracelet
SENSOR	PT100
CAPSULE	6x6x15 mm
CABLE	TPE round
TERMINITIONS	Tin-plated, tips, connectors (other terminations available on request)
RESPONSE TIME	10 s in non-static liquid at 63.2% (depends on configuration)
IDENTIFICATION	Laser on cable, label (customizable)
DECLARATIONS OF CONFORMITY	CE MARKING, CONFLICT MINERALS, REACH, REACH, ROHS

GDI04C

IP67 COPPER CAPSULE
BRACELET PROBES WITH
METAL CLAMP

PRODUCT FAMILY 30GB11

Probe with bracelet, PT100 sensor, TPE round cable, 6x6x15 mm + copper capsule. Suitable for temperature sensing in refrigeration and air conditioning applications, in air quality control applications, in the field of renewable energy and in the food field.



TECHNICAL DATA

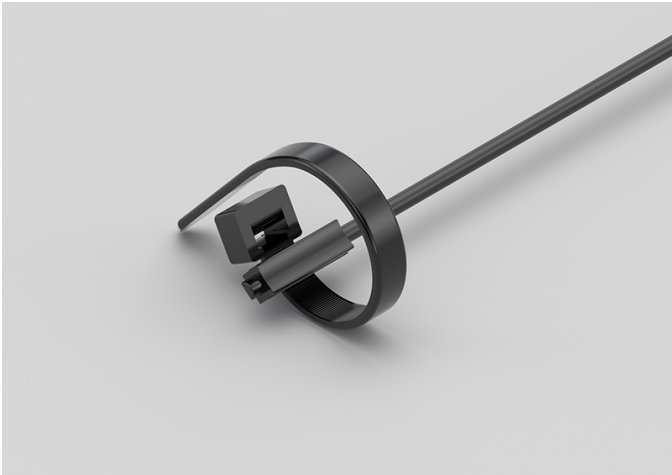
TEMPERATURE RANGE	(-50 +110)°C
MODEL	Bracelet
SENSOR	PT100
CAPSULE	6x6x15 mm + copper
CABLE	TPE round
TERMINITIONS	Tin-plated, tips, connectors (other terminations available on request)
RESPONSE TIME	10 s in non-static liquid at 63.2% (depends on configuration)
IDENTIFICATION	Laser on cable, label (customizable)
DECLARATIONS OF CONFORMITY	CE MARKING, CONFLICT MINERALS, REACH, REACH, ROHS

GDI05C

IP68 RUBBER BRACELET PROBE WITH METAL CLAMP

PRODUCT FAMILY 30GB06

Probe with bracelet, PT100 sensor, TPE round cable, 6x6x15 mm capsule. Suitable for temperature sensing in refrigeration and air conditioning applications, in air quality control applications, in the field of renewable energy and in the food field.



TECHNICAL DATA

TEMPERATURE RANGE	(-50 +110)°C
MODEL	Bracelet
SENSOR	PT100
CAPSULE	6x6x15 mm
CABLE	TPE round
TERMINITIONS	Tin-plated, tips, connectors (other terminations available on request)
RESPONSE TIME	10 s in non-static liquid at 63.2% (depends on configuration)
IDENTIFICATION	Laser on cable, label (customizable)
DECLARATIONS OF CONFORMITY	CE MARKING, CONFLICT MINERALS, REACH, REACH, ROHS

GDI06C

IP67 COPPER CAPSULE
BRACELET PROBES

PRODUCT FAMILY 30GB10

Probe with bracelet, PT100 sensor, TPE round cable, 6x6x15 mm + copper capsule. Suitable for temperature sensing in refrigeration and air conditioning applications, in air quality control applications, in the field of renewable energy and in the food field.



TECHNICAL DATA

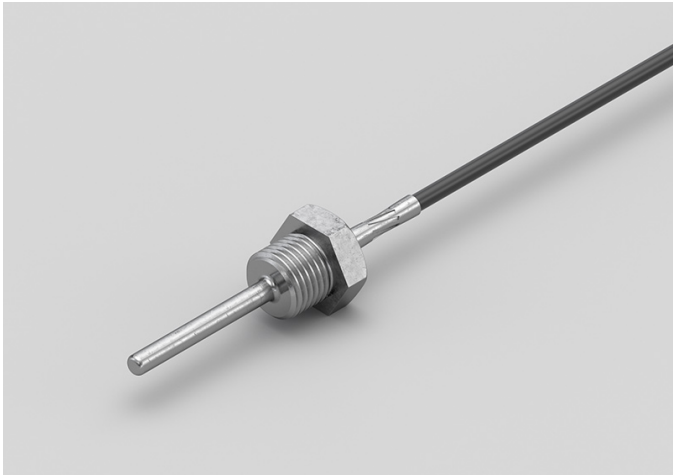
TEMPERATURE RANGE	(-50 +110)°C
MODEL	Bracelet
SENSOR	PT100
CAPSULE	6x6x15 mm + copper
CABLE	TPE round
TERMINITIONS	Tin-plated, tips, connectors (other terminations available on request)
RESPONSE TIME	10 s in non-static liquid at 63.2% (depends on configuration)
IDENTIFICATION	Laser on cable, label (customizable)
DECLARATIONS OF CONFORMITY	CE MARKING, CONFLICT MINERALS, REACH, REACH, ROHS

GDM00C

PROBES WITH WELDED THREADED CONNECTION

PRODUCT FAMILY 15CR05

Probe with connector, PT100 sensor, TPE round cable, diameter 4x40 mm capsule. Suitable for temperature sensing in refrigeration and air conditioning applications, in air quality control applications, in the field of renewable energy and in the food field.



TECHNICAL DATA

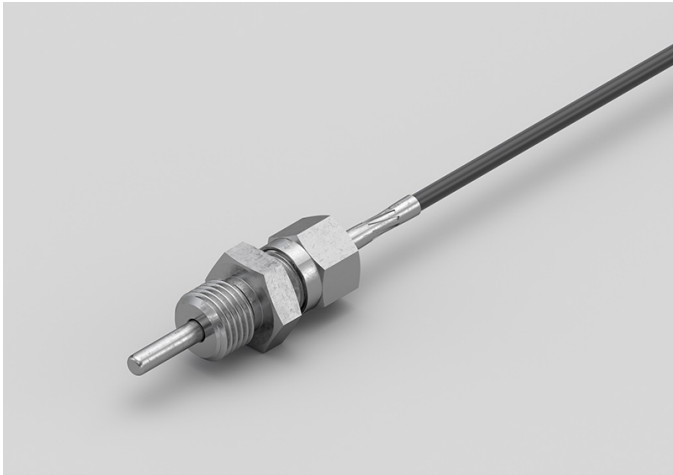
TEMPERATURE RANGE	(-50 +110)°C
MODEL	With connector
SENSOR	PT100
CAPSULE	Diameter 4x40 mm
CABLE	TPE round
TERMINITIONS	Tin-plated, tips, connectors (other terminations available on request)
RESPONSE TIME	10 s in non-static liquid at 63.2% (depends on configuration)
IDENTIFICATION	Laser on cable, label (customizable)
DECLARATIONS OF CONFORMITY	CE MARKING, CONFLICT MINERALS, REACH, REACH, ROHS

GDM01C

PROBES WITH SLIDING
THREADED CONNECTION

PRODUCT FAMILY 15CR10

Probe with connector, PT100 sensor, TPE round cable, diameter 4x40 mm capsule. Suitable for temperature sensing in refrigeration and air conditioning applications, in air quality control applications, in the field of renewable energy and in the food field.



TECHNICAL DATA

TEMPERATURE RANGE	(-50 +110)°C
MODEL	With connector
SENSOR	PT100
CAPSULE	Diameter 4x40 mm
CABLE	TPE round
TERMINITIONS	Tin-plated, tips, connectors (other terminations available on request)
RESPONSE TIME	10 s in non-static liquid at 63.2% (depends on configuration)
IDENTIFICATION	Laser on cable, label (customizable)
DECLARATIONS OF CONFORMITY	CE MARKING, CONFLICT MINERALS, REACH, REACH, ROHS

GDU02C

STANDARD EYELET PROBES

PRODUCT FAMILY 15C005

Contact probe with PT100 sensor, TPE round cable, diameter 4x40 mm capsule. Suitable for temperature sensing in heating applications, in the field of renewable energy and in the food field.



TECHNICAL DATA

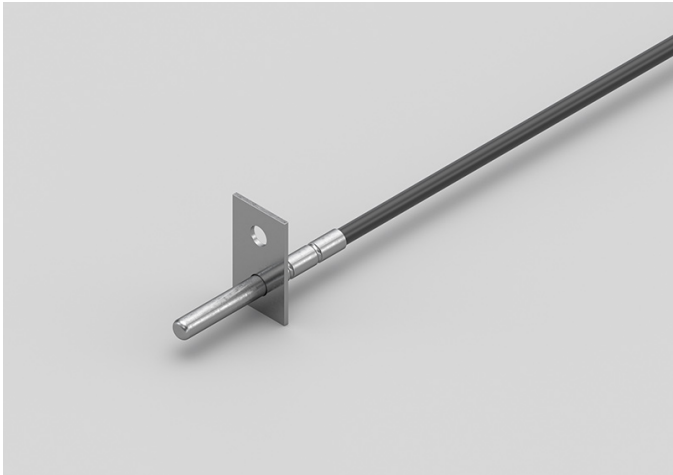
TEMPERATURE RANGE	(-50 +110)°C
MODEL	Contact
SENSOR	PT100
CAPSULE	Diameter 4x40 mm
CABLE	TPE round
TERMINITIONS	Tin-plated, tips, connectors (other terminations available on request)
RESPONSE TIME	10 s in non-static liquid at 63.2% (depends on configuration)
IDENTIFICATION	Laser on cable, label (customizable)
DECLARATIONS OF CONFORMITY	CE MARKING, CONFLICT MINERALS, REACH, REACH, ROHS

GDU03C

METAL CAPSULE PROBES WITH FLANGE

PRODUCT FAMILY 15CA25

Contact probe with PT100 sensor, TPE round cable, diameter 4x40 mm capsule. Suitable for temperature sensing in heating applications, in the field of renewable energy and in the food field.



TECHNICAL DATA

TEMPERATURE RANGE	(-50 +110)°C
MODEL	Contact
SENSOR	PT100
CAPSULE	Diameter 4x40 mm
CABLE	TPE round
TERMINITIONS	Tin-plated, tips, connectors (other terminations available on request)
RESPONSE TIME	10 s in non-static liquid at 63.2% (depends on configuration)
IDENTIFICATION	Laser on cable, label (customizable)
DECLARATIONS OF CONFORMITY	CE MARKING, CONFLICT MINERALS, REACH, REACH, ROHS

GDU04C

PROBES WITH FAST
METAL CAPSULE

PRODUCT FAMILY 15CA10

Probe with steel capsule, PT100 sensor, TPE round cable, diameter 4x40 mm capsule. Suitable for temperature sensing in heating applications, in the field of renewable energy and in the food field.



TECHNICAL DATA

TEMPERATURE RANGE	(-50 +110)°C
MODEL	Steel capsule
SENSOR	PT100
CAPSULE	Diameter 4x40 mm
CABLE	TPE round
TERMINITIONS	Tin-plated, tips, connectors (other terminations available on request)
RESPONSE TIME	10 s in non-static liquid at 63.2% (depends on configuration)
IDENTIFICATION	Laser on cable, label (customizable)
DECLARATIONS OF CONFORMITY	CE MARKING, CONFLICT MINERALS, MOCA, REACH, REACH, ROHS

GEB00C

IP67 RUBBER PROBES Ø6X40..50/60 MM STEEL CAPSULE

PRODUCT FAMILY 30GC13

IP67 probe with PT100 sensor, TPE flat cable, diameter 6x40 mm capsule. Suitable for temperature sensing in refrigeration and air conditioning applications, in heating applications, in the field of renewable energy, in the food field and in the industrial field.



TECHNICAL DATA

TEMPERATURE RANGE	(-50 +120)°C
MODEL	IP67
SENSOR	PT100
CAPSULE	Diameter 6x40 mm
CABLE	TPE flat
TERMINITIONS	Tin-plated, tips, connectors (other terminations available on request)
RESPONSE TIME	10 s in non-static liquid at 63.2% (depends on configuration)
IDENTIFICATION	Laser on cable, label (customizable)
DECLARATIONS OF CONFORMITY	CE MARKING, CONFLICT MINERALS, REACH, REACH, ROHS

GEE00C

IP67 RUBBER PROBES

6X6X15 MM RUBBER CAPSULE

PRODUCT FAMILY 30GC10

IP67 probe with PT100 sensor, TPE flat cable, 1,5x5x6 mm capsule. Suitable for temperature sensing in refrigeration and air conditioning applications, in heating applications, in the field of renewable energy, in the food field and in the industrial field.



TECHNICAL DATA

TEMPERATURE RANGE	(-50 +120)°C
MODEL	IP67
SENSOR	PT100
CAPSULE	1,5x5x6 mm
CABLE	TPE flat
TERMINITIONS	Tin-plated, tips, connectors (other terminations available on request)
RESPONSE TIME	10 s in non-static liquid at 63.2% (depends on configuration)
IDENTIFICATION	Laser on cable, label (customizable)
DECLARATIONS OF CONFORMITY	CE MARKING, CONFLICT MINERALS, REACH, REACH, ROHS

GEH00C

IP67 RUBBER PROBES Ø6X20 MM STEEL CAPSULE

PRODUCT FAMILY 30GC12

IP67 probe with PT100 sensor, TPE flat cable, diameter 6x20 mm capsule. Suitable for temperature sensing in heating applications, in the field of renewable energy and in the food field.



TECHNICAL DATA

TEMPERATURE RANGE	(-50 +120)°C
MODEL	IP67
SENSOR	PT100
CAPSULE	Diameter 6x20 mm
CABLE	TPE flat
TERMINITIONS	Tin-plated, tips, connectors (other terminations available on request)
RESPONSE TIME	10 s in non-static liquid at 63.2% (depends on configuration)
IDENTIFICATION	Laser on cable, label (customizable)
DECLARATIONS OF CONFORMITY	CE MARKING, CONFLICT MINERALS, REACH, REACH, ROHS

GEH01C

IP67 RUBBER PROBES Ø6X40..50/60 MM STEEL CAPSULE

PRODUCT FAMILY 30GC13

IP67 probe with PT100 sensor, TPE flat cable, diameter 6x50 mm capsule. Suitable for temperature sensing in heating applications, in the field of renewable energy and in the food field.



TECHNICAL DATA

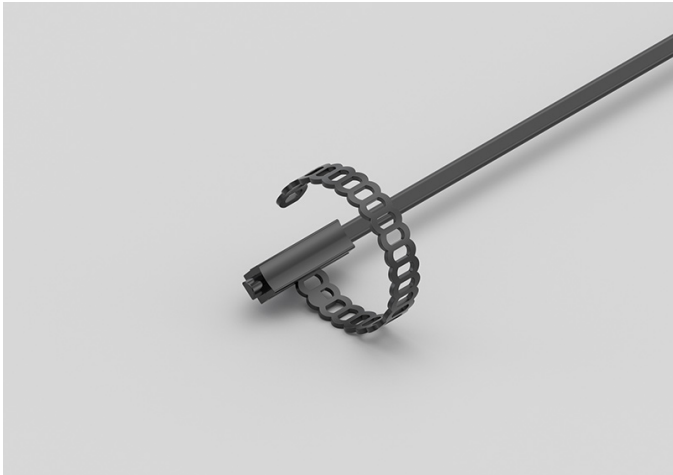
TEMPERATURE RANGE	(-50 +120)°C
MODEL	IP67
SENSOR	PT100
CAPSULE	Diameter 6x50 mm
CABLE	TPE flat
TERMINITIONS	Tin-plated, tips, connectors (other terminations available on request)
RESPONSE TIME	10 s in non-static liquid at 63.2% (depends on configuration)
IDENTIFICATION	Laser on cable, label (customizable)
DECLARATIONS OF CONFORMITY	CE MARKING, CONFLICT MINERALS, REACH, REACH, ROHS

GEI01C

IP67 RUBBER BRACELET PROBES

PRODUCT FAMILY 30GB07

Probe with bracelet, PT100 sensor, TPE flat cable, 6x6x15 mm capsule. Suitable for temperature sensing in heating applications, in the field of renewable energy and in the food field.



TECHNICAL DATA

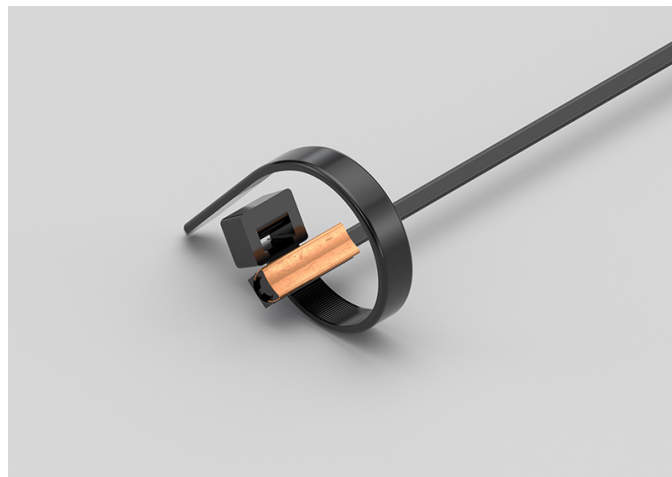
TEMPERATURE RANGE	(-50 +120)°C
MODEL	Bracelet
SENSOR	PT100
CAPSULE	6x6x15 mm
CABLE	TPE flat
TERMINITIONS	Tin-plated, tips, connectors (other terminations available on request)
RESPONSE TIME	10 s in non-static liquid at 63.2% (depends on configuration)
IDENTIFICATION	Laser on cable, label (customizable)
DECLARATIONS OF CONFORMITY	CE MARKING, CONFLICT MINERALS, REACH, REACH, ROHS

GEI02C

IP55 COPPER PLATE BRACELET PROBES WITH METAL CLAMP

PRODUCT FAMILY 30GB16

Probe with bracelet, PT100 sensor, TPE flat cable, 6x6x15 mm + copper plate capsule. Suitable for temperature sensing in refrigeration and air conditioning applications, in air quality control applications and in the food field.



TECHNICAL DATA

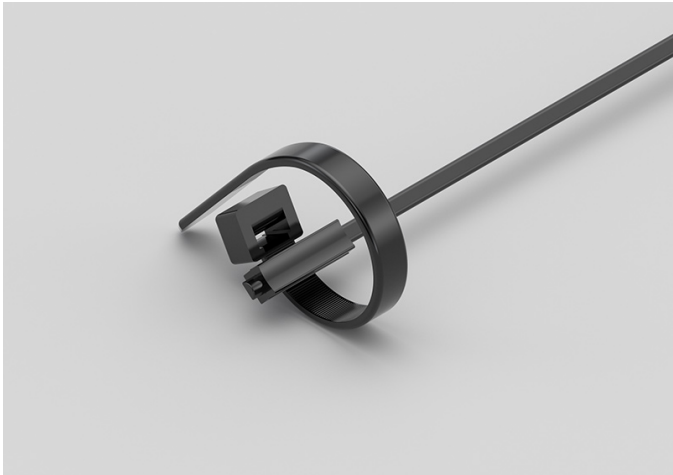
TEMPERATURE RANGE	(-50 +120)°C
MODEL	Bracelet
SENSOR	PT100
CAPSULE	6x6x15 mm + copper plate
CABLE	TPE flat
TERMINITIONS	Tin-plated, tips, connectors (other terminations available on request)
RESPONSE TIME	10 s in non-static liquid at 63.2% (depends on configuration)
IDENTIFICATION	Laser on cable, label (customizable)
DECLARATIONS OF CONFORMITY	CE MARKING, CONFLICT MINERALS, REACH, REACH, ROHS

GEI03C

IP67 RUBBER BRACELET PROBES WITH METAL CLAMP

PRODUCT FAMILY 30GB08

Probe with bracelet, PT100 sensor, TPE flat cable, 6x6x15 mm capsule. Suitable for temperature sensing in refrigeration and air conditioning applications, in air quality control applications and in the food field.



TECHNICAL DATA

TEMPERATURE RANGE	(-50 +120)°C
MODEL	Bracelet
SENSOR	PT100
CAPSULE	6x6x15 mm
CABLE	TPE flat
TERMINITIONS	Tin-plated, tips, connectors (other terminations available on request)
RESPONSE TIME	10 s in non-static liquid at 63.2% (depends on configuration)
IDENTIFICATION	Laser on cable, label (customizable)
DECLARATIONS OF CONFORMITY	CE MARKING, CONFLICT MINERALS, REACH, REACH, ROHS

GEK00C

IP67 RUBBER PROBES

Ø5X20 MM RUBBER CAPSULE

PRODUCT FAMILY 30GC11

IP67 probe with PT100 sensor, TPE flat cable, diameter 5x20 mm capsule. Suitable for temperature sensing in refrigeration and air conditioning applications, in air quality control applications and in the food field.



TECHNICAL DATA

TEMPERATURE RANGE	(-50 +120)°C
MODEL	IP67
SENSOR	PT100
CAPSULE	Diameter 5x20 mm
CABLE	TPE flat
TERMINITIONS	Tin-plated, tips, connectors (other terminations available on request)
RESPONSE TIME	10 s in non-static liquid at 63.2% (depends on configuration)
IDENTIFICATION	Laser on cable, label (customizable)
DECLARATIONS OF CONFORMITY	CE MARKING, CONFLICT MINERALS, REACH, REACH, ROHS

GPB02C

PROBES WITH STANDARD METAL CAPSULE

PRODUCT FAMILY 15CA05

Probe with steel capsule, PT100 sensor, in PVC cable, diameter 6x40 mm capsule. Suitable for temperature sensing in laboratory equipment and machinery, in refrigeration and air conditioning applications, in air quality control applications, in heating applications and in the food field.



TECHNICAL DATA

TEMPERATURE RANGE	(-30 +105)°C
MODEL	Steel capsule
SENSOR	PT100
CAPSULE	Diameter 6x40 mm
CABLE	PVC
TERMINITIONS	Tin-plated, tips, connectors (other terminations available on request)
RESPONSE TIME	10 s in non-static liquid at 63.2% (depends on configuration)
IDENTIFICATION	Laser on cable, label (customizable)
DECLARATIONS OF CONFORMITY	CE MARKING, CONFLICT MINERALS, MOCA, REACH, REACH, ROHS

GPM04C

PROBES WITH SLIDING
THREADED CONNECTION

PRODUCT FAMILY 15CR10

Probe with connector, PT100 sensor, in PVC cable, diameter 4x40 mm capsule. Suitable for temperature sensing in laboratory equipment and machinery, in refrigeration and air conditioning applications, in air quality control applications, in heating applications, in the field of renewable energy and in the food field.



TECHNICAL DATA

TEMPERATURE RANGE	(-30 +80)°C
MODEL	With connector
SENSOR	PT100
CAPSULE	Diameter 4x40 mm
CABLE	PVC
TERMINITIONS	Tin-plated, tips, connectors (other terminations available on request)
RESPONSE TIME	10 s in non-static liquid at 63.2% (depends on configuration)
IDENTIFICATION	Laser on cable, label (customizable)
DECLARATIONS OF CONFORMITY	CE MARKING, CONFLICT MINERALS, REACH, REACH, ROHS

GPM05C

PROBES WITH WELDED
THREADED CONNECTION

PRODUCT FAMILY 15CR05

Probe with connector, PT100 sensor, in PVC cable, diameter 4x40 mm capsule. Suitable for temperature sensing in laboratory equipment and machinery, in refrigeration and air conditioning applications, in air quality control applications, in heating applications, in the field of renewable energy and in the food field.



TECHNICAL DATA

TEMPERATURE RANGE	(-30 +80)°C
MODEL	With connector
SENSOR	PT100
CAPSULE	Diameter 4x40 mm
CABLE	PVC
TERMINITIONS	Tin-plated, tips, connectors (other terminations available on request)
RESPONSE TIME	10 s in non-static liquid at 63.2% (depends on configuration)
IDENTIFICATION	Laser on cable, label (customizable)
DECLARATIONS OF CONFORMITY	CE MARKING, CONFLICT MINERALS, REACH, REACH, ROHS

GPO00C

METAL CAPSULE PROBES WITH FLANGE

PRODUCT FAMILY 15CA25

Contact probe with PT100 sensor, in PVC cable, diameter 6x40 mm capsule. Suitable for temperature sensing in refrigeration and air conditioning applications, in air quality control applications, in heating applications and in the food field.



TECHNICAL DATA

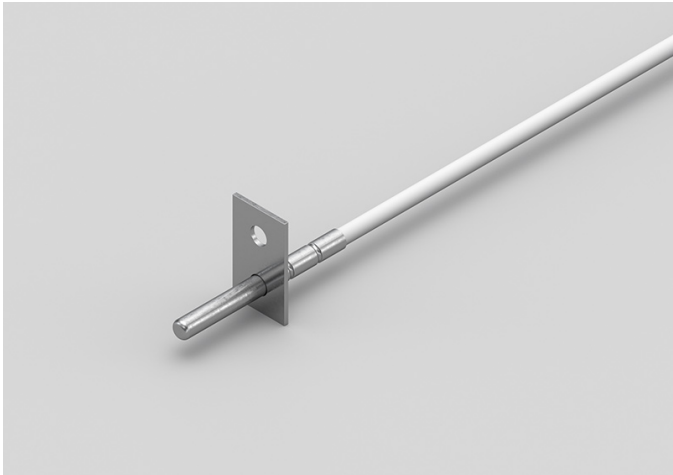
TEMPERATURE RANGE	(-30 +105)°C
MODEL	Contact
SENSOR	PT100
CAPSULE	Diameter 6x40 mm
CABLE	PVC
TERMINITIONS	Tin-plated, tips, connectors (other terminations available on request)
RESPONSE TIME	10 s in non-static liquid at 63.2% (depends on configuration)
IDENTIFICATION	Laser on cable, label (customizable)
DECLARATIONS OF CONFORMITY	CE MARKING, CONFLICT MINERALS, REACH, REACH, ROHS

GPO01C

METAL CAPSULE PROBES
WITH FLANGE

PRODUCT FAMILY 15CA25

Contact probe with PT100 sensor, in PVC cable, diameter 4x40 mm capsule. Suitable for temperature sensing in refrigeration and air conditioning applications, in air quality control applications, in heating applications, in the field of renewable energy and in the food field.



TECHNICAL DATA

TEMPERATURE RANGE	(-30 +80)°C
MODEL	Contact
SENSOR	PT100
CAPSULE	Diameter 4x40 mm
CABLE	PVC
TERMINITIONS	Tin-plated, tips, connectors (other terminations available on request)
RESPONSE TIME	10 s in non-static liquid at 63.2% (depends on configuration)
IDENTIFICATION	Laser on cable, label (customizable)
DECLARATIONS OF CONFORMITY	CE MARKING, CONFLICT MINERALS, REACH, REACH, ROHS

GPO02C

STANDARD EYELET PROBES

PRODUCT FAMILY 15C005

Contact probe with PT100 sensor, in PVC cable, diameter 6x40 mm capsule. Suitable for temperature sensing in refrigeration and air conditioning applications, in air quality control applications, in heating applications and in the food field.



TECHNICAL DATA

TEMPERATURE RANGE	(-30 +105)°C
MODEL	Contact
SENSOR	PT100
CAPSULE	Diameter 6x40 mm
CABLE	PVC
TERMINITIONS	Tin-plated, tips, connectors (other terminations available on request)
RESPONSE TIME	10 s in non-static liquid at 63.2% (depends on configuration)
IDENTIFICATION	Laser on cable, label (customizable)
DECLARATIONS OF CONFORMITY	CE MARKING, CONFLICT MINERALS, REACH, REACH, ROHS

GP003C

STANDARD EYELET PROBES

PRODUCT FAMILY 15C005

Contact probe with PT100 sensor, in PVC cable, diameter 4x40 mm capsule. Suitable for temperature sensing in refrigeration and air conditioning applications, in air quality control applications, in heating applications, in the field of renewable energy and in the food field.



TECHNICAL DATA

TEMPERATURE RANGE	(-30 +80)°C
MODEL	Contact
SENSOR	PT100
CAPSULE	Diameter 4x40 mm
CABLE	PVC
TERMINITIONS	Tin-plated, tips, connectors (other terminations available on request)
RESPONSE TIME	10 s in non-static liquid at 63.2% (depends on configuration)
IDENTIFICATION	Laser on cable, label (customizable)
DECLARATIONS OF CONFORMITY	CE MARKING, CONFLICT MINERALS, REACH, REACH, ROHS

GPR02C

PROBES WITH TAPERED METAL CAPSULE

PRODUCT FAMILY 15CA20

Probe with steel capsule, PT100 sensor, in PVC cable, diameter 3X15 mm + diameter 6X40 mm capsule. Suitable for temperature sensing in laboratory equipment and machinery, in refrigeration and air conditioning applications, in air quality control applications, in heating applications and in the food field.



TECHNICAL DATA

TEMPERATURE RANGE	(-30 +105)°C
MODEL	Steel capsule
SENSOR	PT100
CAPSULE	Diameter 3X15 mm + Diameter 6X40 mm
CABLE	PVC
TERMINITIONS	Tin-plated, tips, connectors (other terminations available on request)
RESPONSE TIME	10 s in non-static liquid at 63.2% (depends on configuration)
IDENTIFICATION	Laser on cable, label (customizable)
DECLARATIONS OF CONFORMITY	CE MARKING, CONFLICT MINERALS, REACH, REACH, ROHS

GPU00C

PROBES WITH FAST METAL CAPSULE

PRODUCT FAMILY 15CA10

Probe with steel capsule, PT100 sensor, in PVC cable, diameter 4x40 mm capsule. Suitable for temperature sensing in laboratory equipment and machinery, in refrigeration and air conditioning applications, in air quality control applications, in heating applications, in the field of renewable energy and in the food field.



TECHNICAL DATA

TEMPERATURE RANGE	(-30 +80)°C
MODEL	Steel capsule
SENSOR	PT100
CAPSULE	Diameter 4x40 mm
CABLE	PVC
TERMINITIONS	Tin-plated, tips, connectors (other terminations available on request)
RESPONSE TIME	10 s in non-static liquid at 63.2% (depends on configuration)
IDENTIFICATION	Laser on cable, label (customizable)
DECLARATIONS OF CONFORMITY	CE MARKING, CONFLICT MINERALS, MOCA, REACH, REACH, ROHS

IDB04C

IP68 RUBBER PROBES
Ø6X40..50/60 MM STEEL

PRODUCT FAMILY 30GC07

IP68 probe with PT1000 sensor, TPE round cable, diameter 6x40 mm capsule. Suitable for temperature sensing in laboratory equipment and machinery.



TECHNICAL DATA

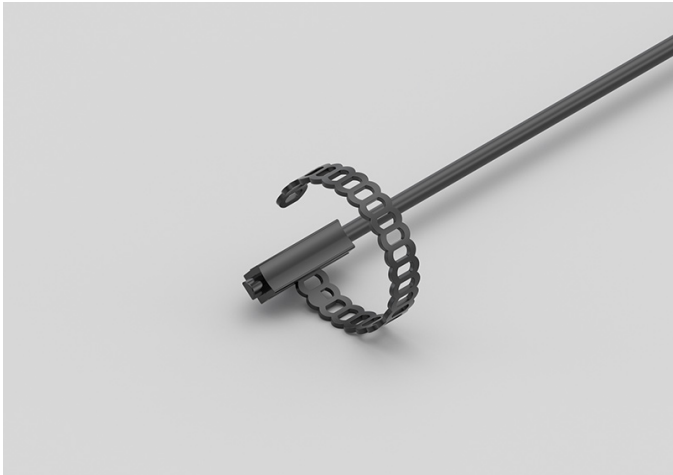
TEMPERATURE RANGE	(-50 +110)°C
MODEL	IP68
SENSOR	PT1000
CAPSULE	Diameter 6x40 mm
CABLE	TPE round
TERMINITIONS	Tin-plated, tips, connectors (other terminations available on request)
RESPONSE TIME	10 s in non-static liquid at 63.2% (depends on configuration)
IDENTIFICATION	Laser on cable, label (customizable)
DECLARATIONS OF CONFORMITY	CE MARKING, CONFLICT MINERALS, REACH, REACH, ROHS

IDI01C

IP68 RUBBER BRACELET PROBES

PRODUCT FAMILY 30GB05

Probe with bracelet, PT1000 sensor, TPE round cable, 6x6x15 mm capsule. Suitable for temperature sensing in air quality control applications.



TECHNICAL DATA

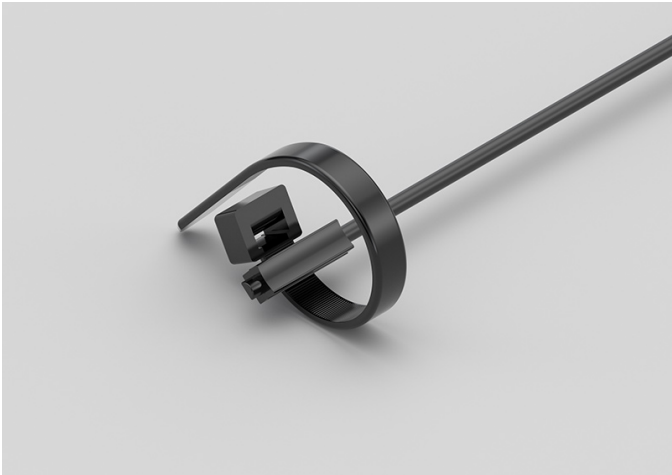
TEMPERATURE RANGE	(-50 +110)°C
MODEL	Bracelet
SENSOR	PT1000
CAPSULE	6x6x15 mm
CABLE	TPE round
TERMINITIONS	Tin-plated, tips, connectors (other terminations available on request)
RESPONSE TIME	10 s in non-static liquid at 63.2% (depends on configuration)
IDENTIFICATION	Laser on cable, label (customizable)
DECLARATIONS OF CONFORMITY	CE MARKING, CONFLICT MINERALS, REACH, REACH, ROHS

IDI02C

IP68 RUBBER BRACELET
PROBE WITH METAL
CLAMP

PRODUCT FAMILY 30GB06

Probe with bracelet, PT1000 sensor, TPE round cable, 6x6x15 mm capsule. Suitable for temperature sensing in air quality control applications.



TECHNICAL DATA

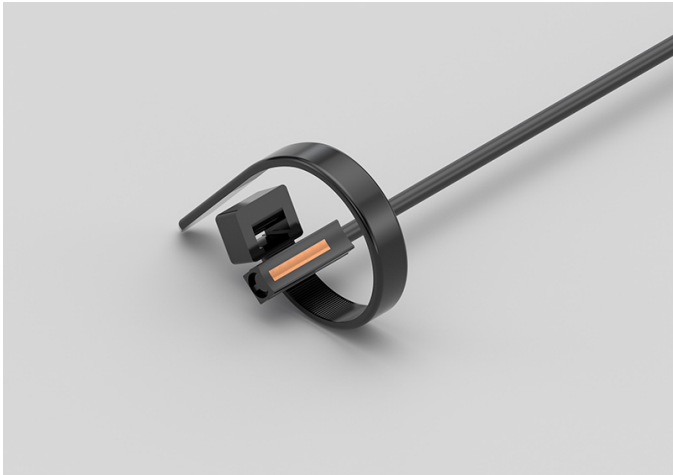
TEMPERATURE RANGE	(-50 +110)°C
MODEL	Bracelet
SENSOR	PT1000
CAPSULE	6x6x15 mm
CABLE	TPE round
TERMINITIONS	Tin-plated, tips, connectors (other terminations available on request)
RESPONSE TIME	10 s in non-static liquid at 63.2% (depends on configuration)
IDENTIFICATION	Laser on cable, label (customizable)
DECLARATIONS OF CONFORMITY	CE MARKING, CONFLICT MINERALS, REACH, REACH, ROHS

IDI03C

IP67 COPPER CAPSULE BRACELET PROBES WITH METAL CLAMP

PRODUCT FAMILY 30GB11

Probe with bracelet, PT1000 sensor, TPE round cable, 6x6x15 mm + copper capsule. Suitable for temperature sensing in air quality control applications.



TECHNICAL DATA

TEMPERATURE RANGE	(-50 +110)°C
MODEL	Bracelet
SENSOR	PT1000
CAPSULE	6x6x15 mm + copper
CABLE	TPE round
TERMINITIONS	Tin-plated, tips, connectors (other terminations available on request)
RESPONSE TIME	10 s in non-static liquid at 63.2% (depends on configuration)
IDENTIFICATION	Laser on cable, label (customizable)
DECLARATIONS OF CONFORMITY	CE MARKING, CONFLICT MINERALS, REACH, REACH, ROHS

IDM01C

PROBES WITH SLIDING
THREADED CONNECTION

PRODUCT FAMILY 15CR10

Probe with connector, PT1000 sensor, TPE round cable, diameter 4x40 mm capsule. Suitable for temperature sensing in heating applications and in the field of renewable energy.



TECHNICAL DATA

TEMPERATURE RANGE	(-50 +110)°C
MODEL	With connector
SENSOR	PT1000
CAPSULE	Diameter 4x40 mm
CABLE	TPE round
TERMINITIONS	Tin-plated, tips, connectors (other terminations available on request)
RESPONSE TIME	10 s in non-static liquid at 63.2% (depends on configuration)
IDENTIFICATION	Laser on cable, label (customizable)
DECLARATIONS OF CONFORMITY	CE MARKING, CONFLICT MINERALS, REACH, REACH, ROHS

IDM02C

PROBES WITH WELDED
THREADED CONNECTION

PRODUCT FAMILY 15CR05

Probe with connector, PT1000 sensor, TPE round cable, diameter 4x40 mm capsule. Suitable for temperature sensing in refrigeration and air conditioning applications, in air quality control applications, in the field of renewable energy and in the food field.



TECHNICAL DATA

TEMPERATURE RANGE	(-50 +110)°C
MODEL	With connector
SENSOR	PT1000
CAPSULE	Diameter 4x40 mm
CABLE	TPE round
TERMINITIONS	Tin-plated, tips, connectors (other terminations available on request)
RESPONSE TIME	10 s in non-static liquid at 63.2% (depends on configuration)
IDENTIFICATION	Laser on cable, label (customizable)
DECLARATIONS OF CONFORMITY	CE MARKING, CONFLICT MINERALS, REACH, REACH, ROHS

IDO00C

METAL CAPSULE PROBES WITH FLANGE

PRODUCT FAMILY 15CA25

Contact probe with PT1000 sensor, TPE round cable, diameter 4x40 mm capsule. Suitable for temperature sensing in refrigeration and air conditioning applications, in air quality control applications, in the field of renewable energy and in the food field.



TECHNICAL DATA

TEMPERATURE RANGE	(-50 +110)°C
MODEL	Contact
SENSOR	PT1000
CAPSULE	Diameter 4x40 mm
CABLE	TPE round
TERMINITIONS	Tin-plated, tips, connectors (other terminations available on request)
RESPONSE TIME	10 s in non-static liquid at 63.2% (depends on configuration)
IDENTIFICATION	Laser on cable, label (customizable)
DECLARATIONS OF CONFORMITY	CE MARKING, CONFLICT MINERALS, REACH, REACH, ROHS

IDO01C

STANDARD EYELET PROBES

PRODUCT FAMILY 15C005

Contact probe with PT1000 sensor, TPE round cable, diameter 4x40 mm capsule. Suitable for temperature sensing in refrigeration and air conditioning applications, in air quality control applications, in the field of renewable energy and in the food field.



TECHNICAL DATA

TEMPERATURE RANGE	(-50 +110)°C
MODEL	Contact
SENSOR	PT1000
CAPSULE	Diameter 4x40 mm
CABLE	TPE round
TERMINITIONS	Tin-plated, tips, connectors (other terminations available on request)
RESPONSE TIME	10 s in non-static liquid at 63.2% (depends on configuration)
IDENTIFICATION	Laser on cable, label (customizable)
DECLARATIONS OF CONFORMITY	CE MARKING, CONFLICT MINERALS, REACH, REACH, ROHS

IDU04C

PROBES WITH FAST METAL CAPSULE

PRODUCT FAMILY 15CA10

Probe with steel capsule, PT1000 sensor, TPE round cable, diameter 4x40 mm capsule. Suitable for temperature sensing in refrigeration and air conditioning applications, in air quality control applications, in the field of renewable energy and in the food field.



TECHNICAL DATA

TEMPERATURE RANGE	(-50 +110)°C
MODEL	Steel capsule
SENSOR	PT1000
CAPSULE	Diameter 4x40 mm
CABLE	TPE round
TERMINITIONS	Tin-plated, tips, connectors (other terminations available on request)
RESPONSE TIME	10 s in non-static liquid at 63.2% (depends on configuration)
IDENTIFICATION	Laser on cable, label (customizable)
DECLARATIONS OF CONFORMITY	CE MARKING, CONFLICT MINERALS, MOCA, REACH, REACH, ROHS

IEB00C

IP67 RUBBER PROBES Ø6X40..50/60 MM STEEL CAPSULE

PRODUCT FAMILY 30GC13

IP67 probe with PT1000 sensor, TPE flat cable, diameter 6x40 mm capsule. Suitable for temperature sensing in refrigeration and air conditioning applications, in air quality control applications, in the field of renewable energy and in the food field.



TECHNICAL DATA

TEMPERATURE RANGE	(-50 +120)°C
MODEL	IP67
SENSOR	PT1000
CAPSULE	Diameter 6x40 mm
CABLE	TPE flat
TERMINITIONS	Tin-plated, tips, connectors (other terminations available on request)
RESPONSE TIME	10 s in non-static liquid at 63.2% (depends on configuration)
IDENTIFICATION	Laser on cable, label (customizable)
DECLARATIONS OF CONFORMITY	CE MARKING, CONFLICT MINERALS, REACH, REACH, ROHS

IEE00C

IP67 RUBBER PROBES

6X6X15 MM RUBBER CAPSULE

PRODUCT FAMILY 30GC10

IP67 probe with PT1000 sensor, TPE flat cable, 1,5x5x6 mm capsule. Suitable for temperature sensing in heating applications, in the field of renewable energy and in the food field.



TECHNICAL DATA

TEMPERATURE RANGE	(-50 +120)°C
MODEL	IP67
SENSOR	PT1000
CAPSULE	1,5x5x6 mm
CABLE	TPE flat
TERMINITIONS	Tin-plated, tips, connectors (other terminations available on request)
RESPONSE TIME	10 s in non-static liquid at 63.2% (depends on configuration)
IDENTIFICATION	Laser on cable, label (customizable)
DECLARATIONS OF CONFORMITY	CE MARKING, CONFLICT MINERALS, REACH, REACH, ROHS

IEH00C

IP67 RUBBER PROBES Ø6X20 MM STEEL CAPSULE

PRODUCT FAMILY 30GC12

IP67 probe with PT1000 sensor, TPE flat cable, diameter 6x20 mm capsule. Suitable for temperature sensing in heating applications, in the field of renewable energy and in the food field.



TECHNICAL DATA

TEMPERATURE RANGE	(-50 +120)°C
MODEL	IP67
SENSOR	PT1000
CAPSULE	Diameter 6x20 mm
CABLE	TPE flat
TERMINITIONS	Tin-plated, tips, connectors (other terminations available on request)
RESPONSE TIME	10 s in non-static liquid at 63.2% (depends on configuration)
IDENTIFICATION	Laser on cable, label (customizable)
DECLARATIONS OF CONFORMITY	CE MARKING, CONFLICT MINERALS, REACH, REACH, ROHS

IEH01C

IP67 RUBBER PROBES Ø6X40..50/60 MM STEEL CAPSULE

PRODUCT FAMILY 30GC13

IP67 probe with PT1000 sensor, TPE flat cable, diameter 6x50 mm capsule. Suitable for temperature sensing in heating applications, in the field of renewable energy and in the food field.



TECHNICAL DATA

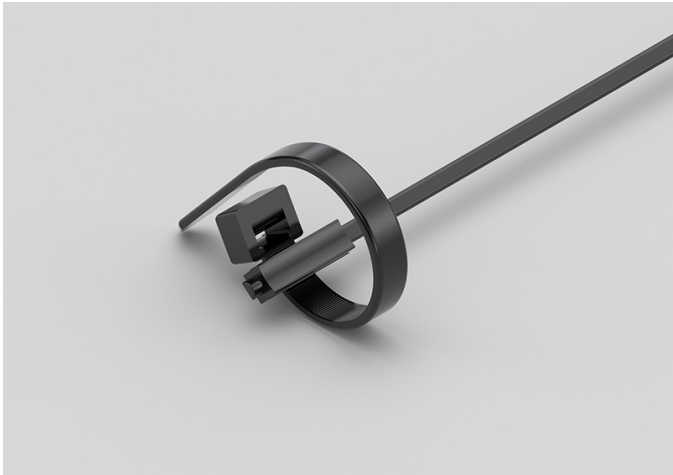
TEMPERATURE RANGE	(-50 +120)°C
MODEL	IP67
SENSOR	PT1000
CAPSULE	Diameter 6x50 mm
CABLE	TPE flat
TERMINITIONS	Tin-plated, tips, connectors (other terminations available on request)
RESPONSE TIME	10 s in non-static liquid at 63.2% (depends on configuration)
IDENTIFICATION	Laser on cable, label (customizable)
DECLARATIONS OF CONFORMITY	CE MARKING, CONFLICT MINERALS, REACH, REACH, ROHS

IEI05C

IP67 RUBBER BRACELET PROBES WITH METAL CLAMP

PRODUCT FAMILY 30GB08

Probe with bracelet, PT1000 sensor, TPE flat cable, 6x6x15 mm capsule. Suitable for temperature sensing in heating applications, in the field of renewable energy and in the food field.



TECHNICAL DATA

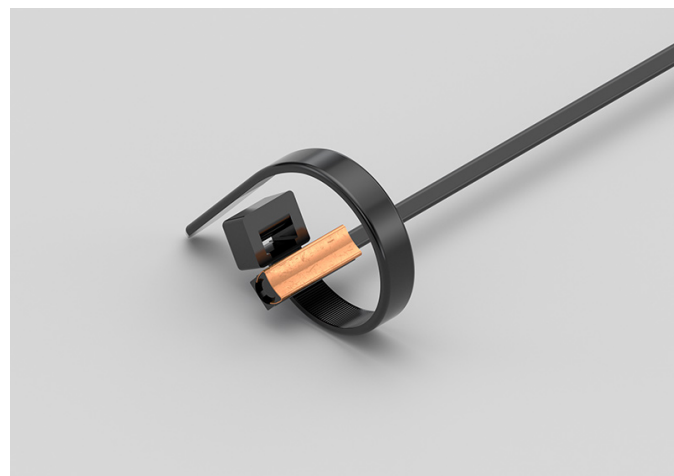
TEMPERATURE RANGE	(-50 +120)°C
MODEL	Bracelet
SENSOR	PT1000
CAPSULE	6x6x15 mm
CABLE	TPE flat
TERMINITIONS	Tin-plated, tips, connectors (other terminations available on request)
RESPONSE TIME	10 s in non-static liquid at 63.2% (depends on configuration)
IDENTIFICATION	Laser on cable, label (customizable)
DECLARATIONS OF CONFORMITY	CE MARKING, CONFLICT MINERALS, REACH, REACH, ROHS

IEI06C

IP55 COPPER PLATE BRACELET PROBES WITH METAL CLAMP

PRODUCT FAMILY 30GB16

Probe with bracelet, PT1000 sensor, TPE flat cable, 6x6x15 mm + copper plate capsule. Suitable for temperature sensing in heating applications, in the field of renewable energy and in the food field.



TECHNICAL DATA

TEMPERATURE RANGE	(-50 +120)°C
MODEL	Bracelet
SENSOR	PT1000
CAPSULE	6x6x15 mm + copper plate
CABLE	TPE flat
TERMINITIONS	Tin-plated, tips, connectors (other terminations available on request)
RESPONSE TIME	10 s in non-static liquid at 63.2% (depends on configuration)
IDENTIFICATION	Laser on cable, label (customizable)
DECLARATIONS OF CONFORMITY	CE MARKING, CONFLICT MINERALS, REACH, REACH, ROHS

IEK00C

IP67 RUBBER PROBES

Ø5X20 MM RUBBER CAPSULE

PRODUCT FAMILY 30GC11

IP67 probe with PT1000 sensor, TPE flat cable, diameter 5x20 mm capsule. Suitable for temperature sensing in refrigeration and air conditioning applications, in heating applications, in the field of renewable energy, in the food field and in the industrial field.



TECHNICAL DATA

TEMPERATURE RANGE	(-50 +120)°C
MODEL	IP67
SENSOR	PT1000
CAPSULE	Diameter 5x20 mm
CABLE	TPE flat
TERMINITIONS	Tin-plated, tips, connectors (other terminations available on request)
RESPONSE TIME	10 s in non-static liquid at 63.2% (depends on configuration)
IDENTIFICATION	Laser on cable, label (customizable)
DECLARATIONS OF CONFORMITY	CE MARKING, CONFLICT MINERALS, REACH, REACH, ROHS

IPB02C

PROBES WITH STANDARD METAL CAPSULE

PRODUCT FAMILY 15CA05

Probe with steel capsule, PT1000 sensor, in PVC cable, diameter 6x40 mm capsule. Suitable for temperature sensing in laboratory equipment and machinery, in refrigeration and air conditioning applications, in air quality control applications, in the field of renewable energy and in the food field.



TECHNICAL DATA

TEMPERATURE RANGE	(-30 +105)°C
MODEL	Steel capsule
SENSOR	PT1000
CAPSULE	Diameter 6x40 mm
CABLE	PVC
TERMINITIONS	Tin-plated, tips, connectors (other terminations available on request)
RESPONSE TIME	10 s in non-static liquid at 63.2% (depends on configuration)
IDENTIFICATION	Laser on cable, label (customizable)
DECLARATIONS OF CONFORMITY	CE MARKING, CONFLICT MINERALS, MOCA, REACH, REACH, ROHS

IPM00C

PROBES WITH SLIDING
THREADED CONNECTION

PRODUCT FAMILY 15CR10

Probe with connector, PT1000 sensor, in PVC cable, diameter 4x40 mm capsule. Suitable for temperature sensing in laboratory equipment and machinery, in refrigeration and air conditioning applications, in air quality control applications, in heating applications, in the field of renewable energy and in the food field.



TECHNICAL DATA

TEMPERATURE RANGE	(-30 +80)°C
MODEL	With connector
SENSOR	PT1000
CAPSULE	Diameter 4x40 mm
CABLE	PVC
TERMINITIONS	Tin-plated, tips, connectors (other terminations available on request)
RESPONSE TIME	10 s in non-static liquid at 63.2% (depends on configuration)
IDENTIFICATION	Laser on cable, label (customizable)
DECLARATIONS OF CONFORMITY	CE MARKING, CONFLICT MINERALS, REACH, REACH, ROHS

IPM01C

PROBES WITH WELDED THREADED CONNECTION

PRODUCT FAMILY 15CR05

Probe with connector, PT1000 sensor, in PVC cable, diameter 4x40 mm capsule. Suitable for temperature sensing in laboratory equipment and machinery, in refrigeration and air conditioning applications, in air quality control applications, in the field of renewable energy and in the food field.



TECHNICAL DATA

TEMPERATURE RANGE	(-30 +80)°C
MODEL	With connector
SENSOR	PT1000
CAPSULE	Diameter 4x40 mm
CABLE	PVC
TERMINITIONS	Tin-plated, tips, connectors (other terminations available on request)
RESPONSE TIME	10 s in non-static liquid at 63.2% (depends on configuration)
IDENTIFICATION	Laser on cable, label (customizable)
DECLARATIONS OF CONFORMITY	CE MARKING, CONFLICT MINERALS, REACH, REACH, ROHS

IPO01C

METAL CAPSULE PROBES WITH FLANGE

PRODUCT FAMILY 15CA25

Contact probe with PT1000 sensor, in PVC cable, diameter 4x40 mm capsule. Suitable for temperature sensing in laboratory equipment and machinery, in heating applications, in the field of renewable energy, in the food field and in the industrial field.



TECHNICAL DATA

TEMPERATURE RANGE	(-30 +80)°C
MODEL	Contact
SENSOR	PT1000
CAPSULE	Diameter 4x40 mm
CABLE	PVC
TERMINITIONS	Tin-plated, tips, connectors (other terminations available on request)
RESPONSE TIME	10 s in non-static liquid at 63.2% (depends on configuration)
IDENTIFICATION	Laser on cable, label (customizable)
DECLARATIONS OF CONFORMITY	CE MARKING, CONFLICT MINERALS, REACH, REACH, ROHS

IP002C

STANDARD EYELET PROBES

PRODUCT FAMILY 15C005

Contact probe with PT1000 sensor, in PVC cable, diameter 4x40 mm capsule. Suitable for temperature sensing in laboratory equipment and machinery, in heating applications, in the field of renewable energy and in the food field.



TECHNICAL DATA

TEMPERATURE RANGE	(-30 +80)°C
MODEL	Contact
SENSOR	PT1000
CAPSULE	Diameter 4x40 mm
CABLE	PVC
TERMINITIONS	Tin-plated, tips, connectors (other terminations available on request)
RESPONSE TIME	10 s in non-static liquid at 63.2% (depends on configuration)
IDENTIFICATION	Laser on cable, label (customizable)
DECLARATIONS OF CONFORMITY	CE MARKING, CONFLICT MINERALS, REACH, REACH, ROHS

IPO03C

METAL CAPSULE PROBES WITH FLANGE

PRODUCT FAMILY 15CA25

Contact probe with PT1000 sensor, in PVC cable, diameter 6x40 mm capsule. Suitable for temperature sensing in laboratory equipment and machinery, in refrigeration and air conditioning applications, in heating applications, in the field of renewable energy, in the food field and in the industrial field.



TECHNICAL DATA

TEMPERATURE RANGE	(-30 +105)°C
MODEL	Contact
SENSOR	PT1000
CAPSULE	Diameter 6x40 mm
CABLE	PVC
TERMINITIONS	Tin-plated, tips, connectors (other terminations available on request)
RESPONSE TIME	10 s in non-static liquid at 63.2% (depends on configuration)
IDENTIFICATION	Laser on cable, label (customizable)
DECLARATIONS OF CONFORMITY	CE MARKING, CONFLICT MINERALS, REACH, REACH, ROHS

IPO04C

STANDARD EYELET PROBES

PRODUCT FAMILY 15C005

Contact probe with PT1000 sensor, in PVC cable, diameter 6x40 mm capsule. Suitable for temperature sensing in laboratory equipment and machinery, in refrigeration and air conditioning applications, in heating applications, in the field of renewable energy, in the food field and in the industrial field.



TECHNICAL DATA

TEMPERATURE RANGE	(-30 +105)°C
MODEL	Contact
SENSOR	PT1000
CAPSULE	Diameter 6x40 mm
CABLE	PVC
TERMINITIONS	Tin-plated, tips, connectors (other terminations available on request)
RESPONSE TIME	10 s in non-static liquid at 63.2% (depends on configuration)
IDENTIFICATION	Laser on cable, label (customizable)
DECLARATIONS OF CONFORMITY	CE MARKING, CONFLICT MINERALS, REACH, REACH, ROHS

IPR01C

PROBES WITH TAPERED METAL CAPSULE

PRODUCT FAMILY 15CA20

Probe with steel capsule, PT1000 sensor, in PVC cable, diameter 3X15 mm + diameter 6X40 mm capsule. Suitable for temperature sensing in laboratory equipment and machinery, in heating applications, in the field of renewable energy and in the food field.



TECHNICAL DATA

TEMPERATURE RANGE	(-30 +105)°C
MODEL	Steel capsule
SENSOR	PT1000
CAPSULE	Diameter 3X15 mm + Diameter 6X40 mm
CABLE	PVC
TERMINITIONS	Tin-plated, tips, connectors (other terminations available on request)
RESPONSE TIME	10 s in non-static liquid at 63.2% (depends on configuration)
IDENTIFICATION	Laser on cable, label (customizable)
DECLARATIONS OF CONFORMITY	CE MARKING, CONFLICT MINERALS, REACH, REACH, ROHS

IPU00C

PROBES WITH FAST
METAL CAPSULE

PRODUCT FAMILY 15CA10

Probe with steel capsule, PT1000 sensor, in PVC cable, diameter 4x40 mm capsule. Suitable for temperature sensing in laboratory equipment and machinery, in heating applications, in the field of renewable energy, in the food field and in the industrial field.



TECHNICAL DATA

TEMPERATURE RANGE	(-30 +80)°C
MODEL	Steel capsule
SENSOR	PT1000
CAPSULE	Diameter 4x40 mm
CABLE	PVC
TERMINITIONS	Tin-plated, tips, connectors (other terminations available on request)
RESPONSE TIME	10 s in non-static liquid at 63.2% (depends on configuration)
IDENTIFICATION	Laser on cable, label (customizable)
DECLARATIONS OF CONFORMITY	CE MARKING, CONFLICT MINERALS, MOCA, REACH, REACH, ROHS

NDB15C

IP68 RUBBER PROBES
Ø6X40..50/60 MM STEEL

PRODUCT FAMILY 30GC07

IP68 probe with NTC sensor, TPE round cable, diameter 6x40 mm capsule. Suitable for temperature sensing in laboratory equipment and machinery.



TECHNICAL DATA

TEMPERATURE RANGE	(-50 +110)°C
MODEL	IP68
SENSOR	NTC
CAPSULE	Diameter 6x40 mm
CABLE	TPE round
TERMINITIONS	Tin-plated, tips, connectors (other terminations available on request)
RESPONSE TIME	10 s in non-static liquid at 63.2% (depends on configuration)
IDENTIFICATION	Laser on cable, label (customizable)
DECLARATIONS OF CONFORMITY	CE MARKING, CONFLICT MINERALS, REACH, REACH, ROHS

NDI13C

IP67 COPPER CAPSULE
BRACELET PROBES WITH
METAL CLAMP

PRODUCT FAMILY 30GB11

Probe with bracelet, NTC sensor, TPE round cable, 6x6x15 mm + copper capsule. Suitable for temperature sensing in laboratory equipment and machinery.



TECHNICAL DATA

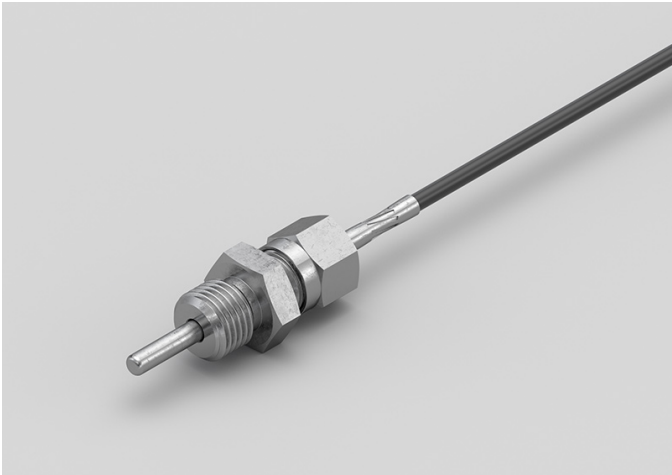
TEMPERATURE RANGE	(-50 +110)°C
MODEL	Bracelet
SENSOR	NTC
CAPSULE	6x6x15 mm + copper
CABLE	TPE round
TERMINITIONS	Tin-plated, tips, connectors (other terminations available on request)
RESPONSE TIME	10 s in non-static liquid at 63.2% (depends on configuration)
IDENTIFICATION	Laser on cable, label (customizable)
DECLARATIONS OF CONFORMITY	CE MARKING, CONFLICT MINERALS, REACH, REACH, ROHS

NDM02C

PROBES WITH SLIDING
THREADED CONNECTION

PRODUCT FAMILY 15CR10

Probe with connector, NTC sensor, TPE round cable, diameter 4x40 mm capsule. Suitable for temperature sensing in laboratory equipment and machinery.



TECHNICAL DATA

TEMPERATURE RANGE	(-50 +110)°C
MODEL	With connector
SENSOR	NTC
CAPSULE	Diameter 4x40 mm
CABLE	TPE round
TERMINITIONS	Tin-plated, tips, connectors (other terminations available on request)
RESPONSE TIME	10 s in non-static liquid at 63.2% (depends on configuration)
IDENTIFICATION	Laser on cable, label (customizable)
DECLARATIONS OF CONFORMITY	CE MARKING, CONFLICT MINERALS, MOCA, REACH, REACH, ROHS

NDO01C

STANDARD EYELET PROBES

PRODUCT FAMILY 15C005

Contact probe with NTC sensor, TPE round cable, diameter 4x40 mm capsule. Suitable for temperature sensing in laboratory equipment and machinery.



TECHNICAL DATA

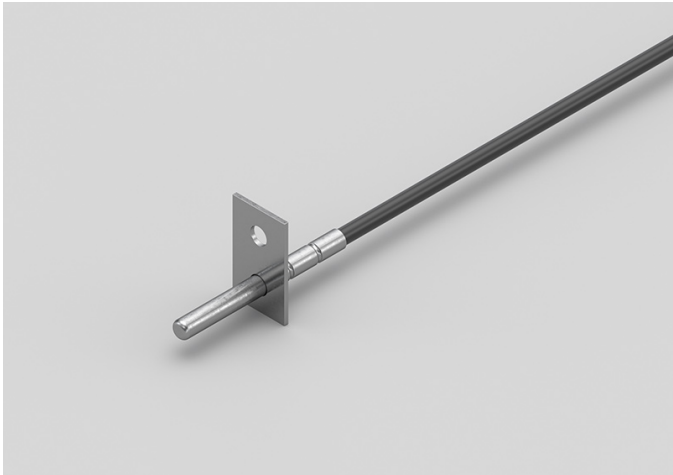
TEMPERATURE RANGE	(-50 +110)°C
MODEL	Contact
SENSOR	NTC
CAPSULE	Diameter 4x40 mm
CABLE	TPE round
TERMINITIONS	Tin-plated, tips, connectors (other terminations available on request)
RESPONSE TIME	10 s in non-static liquid at 63.2% (depends on configuration)
IDENTIFICATION	Laser on cable, label (customizable)
DECLARATIONS OF CONFORMITY	CE MARKING, CONFLICT MINERALS, REACH, REACH, ROHS

NDO02C

METAL CAPSULE PROBES
WITH FLANGE

PRODUCT FAMILY 15CA25

Contact probe with NTC sensor, TPE round cable, diameter 4x40 mm capsule. Suitable for temperature sensing in laboratory equipment and machinery.



TECHNICAL DATA

TEMPERATURE RANGE	(-50 +110)°C
MODEL	Contact
SENSOR	NTC
CAPSULE	Diameter 4x40 mm
CABLE	TPE round
TERMINITIONS	Tin-plated, tips, connectors (other terminations available on request)
RESPONSE TIME	10 s in non-static liquid at 63.2% (depends on configuration)
IDENTIFICATION	Laser on cable, label (customizable)
DECLARATIONS OF CONFORMITY	CE MARKING, CONFLICT MINERALS, REACH, REACH, ROHS

NEB00C

IP67 RUBBER PROBES
Ø6X40..50/60 MM STEEL
CAPSULE

PRODUCT FAMILY 30GC13

IP67 probe with NTC sensor, TPE flat cable, diameter 6x40 mm capsule. Suitable for temperature sensing in laboratory equipment and machinery.



TECHNICAL DATA

TEMPERATURE RANGE	(-50 +120)°C
MODEL	IP67
SENSOR	NTC
CAPSULE	Diameter 6x40 mm
CABLE	TPE flat
TERMINITIONS	Tin-plated, tips, connectors (other terminations available on request)
RESPONSE TIME	10 s in non-static liquid at 63.2% (depends on configuration)
IDENTIFICATION	Laser on cable, label (customizable)
DECLARATIONS OF CONFORMITY	CE MARKING, CONFLICT MINERALS, REACH, REACH, ROHS

NEE00C

IP67 RUBBER PROBES

6X6X15 MM RUBBER CAPSULE

PRODUCT FAMILY 30GC10

IP67 probe with NTC sensor, TPE flat cable, 1,5x5x6 mm capsule. Suitable for temperature sensing in laboratory equipment and machinery.



TECHNICAL DATA

TEMPERATURE RANGE	(-50 +120)°C
MODEL	IP67
SENSOR	NTC
CAPSULE	1,5x5x6 mm
CABLE	TPE flat
TERMINITIONS	Tin-plated, tips, connectors (other terminations available on request)
RESPONSE TIME	10 s in non-static liquid at 63.2% (depends on configuration)
IDENTIFICATION	Laser on cable, label (customizable)
DECLARATIONS OF CONFORMITY	CE MARKING, CONFLICT MINERALS, REACH, REACH, ROHS

NEH01C

IP67 RUBBER PROBES
Ø6X40..50/60 MM STEEL
CAPSULE

PRODUCT FAMILY 30GC13

IP67 probe with NTC sensor, TPE flat cable, diameter 6x50 mm capsule. Suitable for temperature sensing in laboratory equipment and machinery.



TECHNICAL DATA

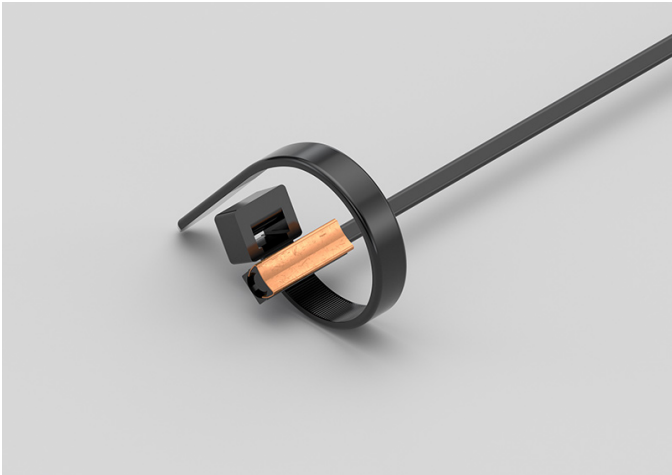
TEMPERATURE RANGE	(-50 +120)°C
MODEL	IP67
SENSOR	NTC
CAPSULE	Diameter 6x50 mm
CABLE	TPE flat
TERMINITIONS	Tin-plated, tips, connectors (other terminations available on request)
RESPONSE TIME	10 s in non-static liquid at 63.2% (depends on configuration)
IDENTIFICATION	Laser on cable, label (customizable)
DECLARATIONS OF CONFORMITY	CE MARKING, CONFLICT MINERALS, REACH, REACH, ROHS

NEI09C

IP55 COPPER PLATE
BRACELET PROBES WITH
METAL CLAMP

PRODUCT FAMILY 30GB16

Probe with bracelet, NTC sensor, TPE flat cable, 6x6x15 mm + copper plate capsule. Suitable for temperature sensing in laboratory equipment and machinery.



TECHNICAL DATA

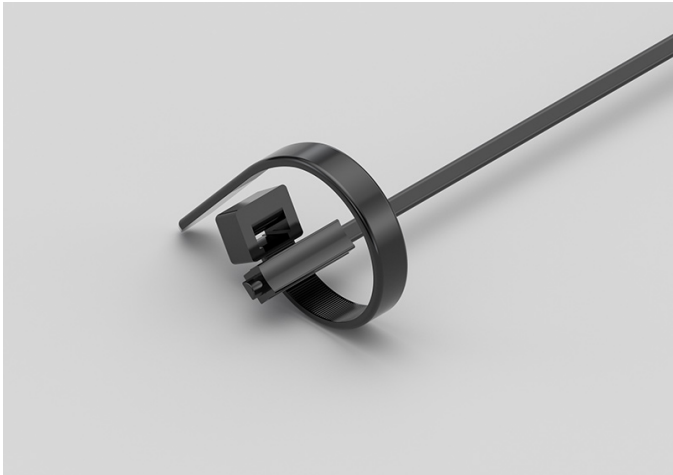
TEMPERATURE RANGE	(-50 +120)°C
MODEL	Bracelet
SENSOR	NTC
CAPSULE	6x6x15 mm + copper plate
CABLE	TPE flat
TERMINITIONS	Tin-plated, tips, connectors (other terminations available on request)
RESPONSE TIME	10 s in non-static liquid at 63.2% (depends on configuration)
IDENTIFICATION	Laser on cable, label (customizable)
DECLARATIONS OF CONFORMITY	CE MARKING, CONFLICT MINERALS, REACH, REACH, ROHS

NEI10C

IP67 RUBBER BRACELET
PROBES WITH METAL
CLAMP

PRODUCT FAMILY 30GB08

Probe with bracelet, NTC sensor, TPE flat cable, 6x6x15 mm capsule. Suitable for temperature sensing in laboratory equipment and machinery, in heating applications and in the food field.



TECHNICAL DATA

TEMPERATURE RANGE	(-50 +120)°C
MODEL	Bracelet
SENSOR	NTC
CAPSULE	6x6x15 mm
CABLE	TPE flat
TERMINITIONS	Tin-plated, tips, connectors (other terminations available on request)
RESPONSE TIME	10 s in non-static liquid at 63.2% (depends on configuration)
IDENTIFICATION	Laser on cable, label (customizable)
DECLARATIONS OF CONFORMITY	CE MARKING, CONFLICT MINERALS, REACH, REACH, ROHS

NPB14C

PROBES WITH STANDARD METAL CAPSULE

PRODUCT FAMILY 15CA05

Probe with steel capsule, NTC sensor, in PVC cable, diameter 6x40 mm capsule. Suitable for temperature sensing in laboratory equipment and machinery, in heating applications and in the food field.



TECHNICAL DATA

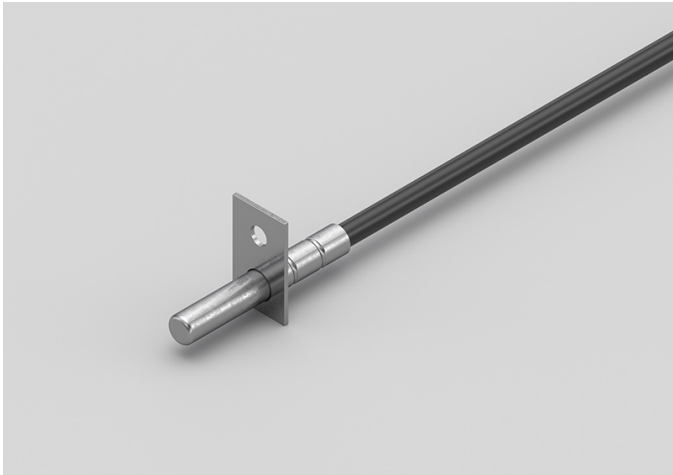
TEMPERATURE RANGE	(-30 +105)°C
MODEL	Steel capsule
SENSOR	NTC
CAPSULE	Diameter 6x40 mm
CABLE	PVC
TERMINITIONS	Tin-plated, tips, connectors (other terminations available on request)
RESPONSE TIME	10 s in non-static liquid at 63.2% (depends on configuration)
IDENTIFICATION	Laser on cable, label (customizable)
DECLARATIONS OF CONFORMITY	CE MARKING, CONFLICT MINERALS, MOCA, REACH, REACH, ROHS

NPB15C

METAL CAPSULE PROBES
WITH FLANGE

PRODUCT FAMILY 15CA25

Contact probe with NTC sensor, in PVC cable, diameter 6x40 mm capsule. Suitable for temperature sensing in laboratory equipment and machinery, in heating applications and in the food field.



TECHNICAL DATA

TEMPERATURE RANGE	(-30 +105)°C
MODEL	Contact
SENSOR	NTC
CAPSULE	Diameter 6x40 mm
CABLE	PVC
TERMINITIONS	Tin-plated, tips, connectors (other terminations available on request)
RESPONSE TIME	10 s in non-static liquid at 63.2% (depends on configuration)
IDENTIFICATION	Laser on cable, label (customizable)
DECLARATIONS OF CONFORMITY	CE MARKING, CONFLICT MINERALS, MOCA, REACH, REACH, ROHS

NPB16C

STANDARD EYELET PROBES

PRODUCT FAMILY 15C005

Contact probe with NTC sensor, in PVC cable, diameter 6x40 mm capsule. Suitable for temperature sensing in laboratory equipment and machinery, in heating applications and in the food field.



TECHNICAL DATA

TEMPERATURE RANGE	(-30 +105)°C
MODEL	Contact
SENSOR	NTC
CAPSULE	Diameter 6x40 mm
CABLE	PVC
TERMINITIONS	Tin-plated, tips, connectors (other terminations available on request)
RESPONSE TIME	10 s in non-static liquid at 63.2% (depends on configuration)
IDENTIFICATION	Laser on cable, label (customizable)
DECLARATIONS OF CONFORMITY	CE MARKING, CONFLICT MINERALS, MOCA, REACH, REACH, ROHS

NPH07R

ENVIRONMENTAL
PROBES WITH
PERFORATED CAPSULE

PRODUCT FAMILY 50SC15

Enviroment probe with NTC sensor, in PVC cable, diameter 6X100 mm capsule. Suitable for temperature sensing in laboratory equipment and machinery, in refrigeration and air conditioning applications, in heating applications, in the food field and in the industrial field.



TECHNICAL DATA

TEMPERATURE RANGE	(0 +70)°C
MODEL	Environment
SENSOR	NTC
CAPSULE	Diameter 6X100 mm
CABLE	PVC
TERMINITIONS	Tin-plated, tips, connectors (other terminations available on request)
RESPONSE TIME	10 s in non-static liquid at 63.2% (depends on configuration)
IDENTIFICATION	Laser on cable, label (customizable)
DECLARATIONS OF CONFORMITY	CE MARKING, CONFLICT MINERALS, MOCA, REACH, REACH, ROHS

NPR00C

PROBES WITH TAPERED METAL CAPSULE

PRODUCT FAMILY 15CA20

Probe with connector, NTC sensor, in PVC cable, diameter 3X15 mm + diameter 6X40 mm capsule. Suitable for temperature sensing in refrigeration and air conditioning applications and in the food field.



TECHNICAL DATA

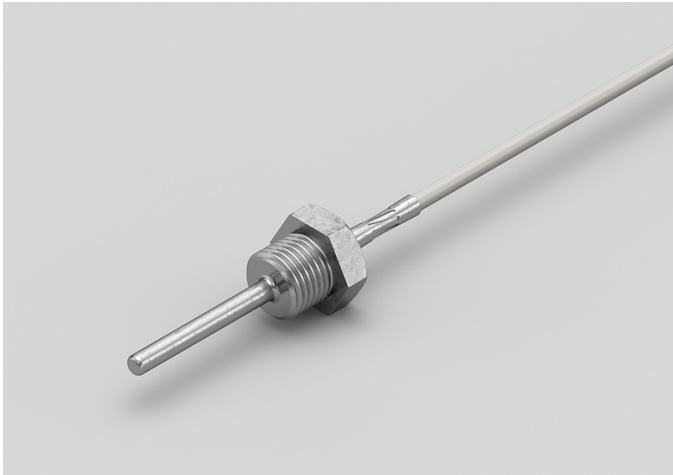
TEMPERATURE RANGE	(-30 +105)°C
MODEL	With connector
SENSOR	NTC
CAPSULE	Diameter 3X15 mm + Diameter 6X40 mm
CABLE	PVC
TERMINITIONS	Tin-plated, tips, connectors (other terminations available on request)
RESPONSE TIME	10 s in non-static liquid at 63.2% (depends on configuration)
IDENTIFICATION	Laser on cable, label (customizable)
DECLARATIONS OF CONFORMITY	CE MARKING, CONFLICT MINERALS, REACH, REACH, ROHS

NQM00C

PROBES WITH WELDED
THREADED CONNECTION

PRODUCT FAMILY 15CR05

Probe with connector, NTC sensor, in PVC cable, diameter 4x40 mm capsule. Suitable for temperature sensing in refrigeration and air conditioning applications and in the food field.



TECHNICAL DATA

TEMPERATURE RANGE	(-30 +80)°C
MODEL	With connector
SENSOR	NTC
CAPSULE	Diameter 4x40 mm
CABLE	PVC
TERMINITIONS	Tin-plated, tips, connectors (other terminations available on request)
RESPONSE TIME	10 s in non-static liquid at 63.2% (depends on configuration)
IDENTIFICATION	Laser on cable, label (customizable)
DECLARATIONS OF CONFORMITY	CE MARKING, CONFLICT MINERALS, REACH, REACH, ROHS

NQM01C

PROBES WITH SLIDING
THREADED CONNECTION

PRODUCT FAMILY 15CR10

Probe with connector, NTC sensor, in PVC cable, diameter 4x40 mm capsule. Suitable for temperature sensing in refrigeration and air conditioning applications and in the food field.



TECHNICAL DATA

TEMPERATURE RANGE	(-30 +80)°C
MODEL	With connector
SENSOR	NTC
CAPSULE	Diameter 4x40 mm
CABLE	PVC
TERMINITIONS	Tin-plated, tips, connectors (other terminations available on request)
RESPONSE TIME	10 s in non-static liquid at 63.2% (depends on configuration)
IDENTIFICATION	Laser on cable, label (customizable)
DECLARATIONS OF CONFORMITY	CE MARKING, CONFLICT MINERALS, REACH, REACH, ROHS

NQ000C

STANDARD EYELET PROBES

PRODUCT FAMILY 15C005

Contact probe with NTC sensor, in PVC cable, diameter 4x40 mm capsule. Suitable for temperature sensing in refrigeration and air conditioning applications and in the food field.



TECHNICAL DATA

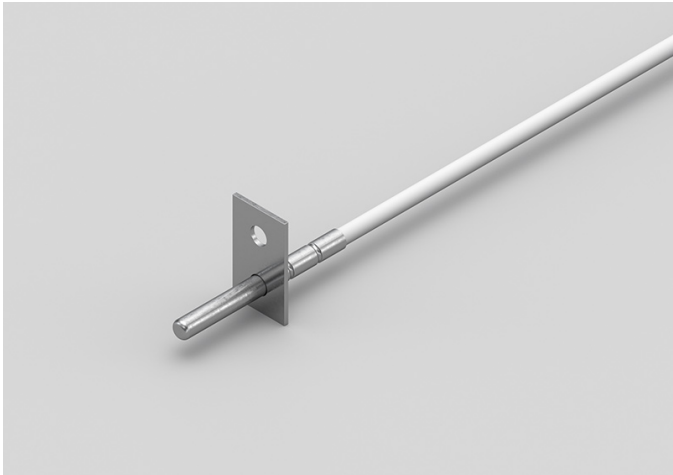
TEMPERATURE RANGE	(-30 +80)°C
MODEL	Contact
SENSOR	NTC
CAPSULE	Diameter 4x40 mm
CABLE	PVC
TERMINITIONS	Tin-plated, tips, connectors (other terminations available on request)
RESPONSE TIME	10 s in non-static liquid at 63.2% (depends on configuration)
IDENTIFICATION	Laser on cable, label (customizable)
DECLARATIONS OF CONFORMITY	CE MARKING, CONFLICT MINERALS, REACH, REACH, ROHS

NQU00C

METAL CAPSULE PROBES WITH FLANGE

PRODUCT FAMILY 15CA25

Contact probe with NTC sensor, in PVC cable, diameter 4x40 mm capsule. Suitable for temperature sensing in refrigeration and air conditioning applications and in the food field.



TECHNICAL DATA

TEMPERATURE RANGE	(-30 +80)°C
MODEL	Contact
SENSOR	NTC
CAPSULE	Diameter 4x40 mm
CABLE	PVC
TERMINITIONS	Tin-plated, tips, connectors (other terminations available on request)
RESPONSE TIME	10 s in non-static liquid at 63.2% (depends on configuration)
IDENTIFICATION	Laser on cable, label (customizable)
DECLARATIONS OF CONFORMITY	CE MARKING, CONFLICT MINERALS, REACH, REACH, ROHS

NQU01C

PROBES WITH FAST METAL CAPSULE

PRODUCT FAMILY 15CA10

Probe with steel capsule, NTC sensor, in PVC cable, diameter 4x40 mm capsule. Suitable for temperature sensing in refrigeration and air conditioning applications and in the food field.



TECHNICAL DATA

TEMPERATURE RANGE	(-30 +80)°C
MODEL	Steel capsule
SENSOR	NTC
CAPSULE	Diameter 4x40 mm
CABLE	PVC
TERMINITIONS	Tin-plated, tips, connectors (other terminations available on request)
RESPONSE TIME	10 s in non-static liquid at 63.2% (depends on configuration)
IDENTIFICATION	Laser on cable, label (customizable)
DECLARATIONS OF CONFORMITY	CE MARKING, CONFLICT MINERALS, REACH, REACH, ROHS



SACET S.R.L.
Via del Candel, 55/D
32100 Belluno (BL) Italy

C.F. E P.I. 00654590256

PHONE NUMBER +39 0437 33166

EMAIL info@sacet-probes.com