

CATALOG

TEMPERATURE PROBES

APPLICATION HEATING

CATEGORY STOVES AND BOILERS

CATEGORY

STOVES AND BOILERS

AEI00C

IP55 COPPER PLATE BRACELET PROBES

PRODUCT FAMILY 30GB15

Probe with bracelet, PTC sensor, TPE flat cable, 6x6x15 mm + copper plate capsule. Suitable for temperature sensing in laboratory equipment and machinery, in refrigeration and air conditioning applications, in air quality control applications, in heating applications, in the food field and in the industrial field.



TECHNICAL DATA

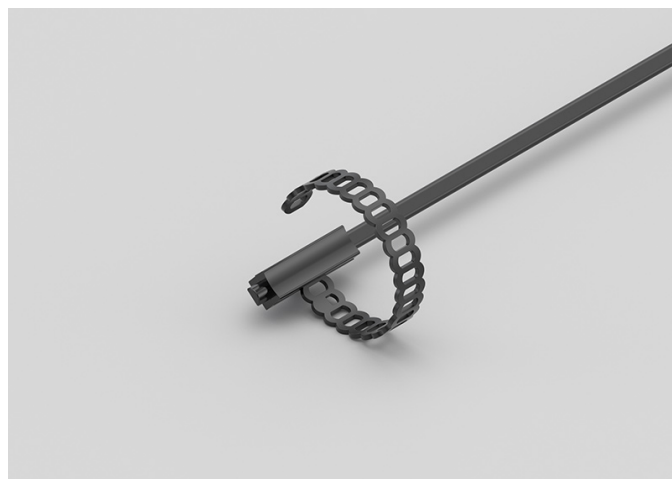
TEMPERATURE RANGE	(-50 +120)°C
MODEL	Bracelet
SENSOR	PTC
CAPSULE	6x6x15 mm + copper plate
CABLE	TPE flat
TERMINITIONS	Tin-plated, tips, connectors (other terminations available on request)
RESPONSE TIME	10 s in non-static liquid at 63.2% (depends on configuration)
IDENTIFICATION	Laser on cable, label (customizable)
DECLARATIONS OF CONFORMITY	CE MARKING, CONFLICT MINERALS, REACH, REACH, ROHS

AEI01C

IP67 RUBBER BRACELET PROBES

PRODUCT FAMILY 30GB07

Probe with bracelet, PTC sensor, TPE flat cable, 6x6x15 mm capsule. Suitable for temperature sensing in laboratory equipment and machinery, in refrigeration and air conditioning applications, in air quality control applications, in heating applications, in the food field and in the industrial field.



TECHNICAL DATA

TEMPERATURE RANGE	(-50 +120)°C
MODEL	Bracelet
SENSOR	PTC
CAPSULE	6x6x15 mm
CABLE	TPE flat
TERMINITIONS	Tin-plated, tips, connectors (other terminations available on request)
RESPONSE TIME	10 s in non-static liquid at 63.2% (depends on configuration)
IDENTIFICATION	Laser on cable, label (customizable)
DECLARATIONS OF CONFORMITY	CE MARKING, CONFLICT MINERALS, REACH, REACH, ROHS

AGB03C

PROBES WITH STANDARD METAL CAPSULE

PRODUCT FAMILY 15CA05

Probe with steel capsule, PTC sensor, in silicone cable, diameter 6x40 mm capsule. Suitable for temperature sensing in refrigeration and air conditioning applications, in air quality control applications, in heating applications and in the food field.



TECHNICAL DATA

TEMPERATURE RANGE	(-50 +150)°C
MODEL	Steel capsule
SENSOR	PTC
CAPSULE	Diameter 6x40 mm
CABLE	Silicone
TERMINITIONS	Tin-plated, tips, connectors (other terminations available on request)
RESPONSE TIME	10 s in non-static liquid at 63.2% (depends on configuration)
IDENTIFICATION	Laser on cable, label (customizable)
DECLARATIONS OF CONFORMITY	CE MARKING, CONFLICT MINERALS, MOCA, REACH, REACH, ROHS

GEI00C

IP55 COPPER PLATE BRACELET PROBES

PRODUCT FAMILY 30GB15

Probe with bracelet, PT100 sensor, TPE flat cable, 6x6x15 mm + copper plate capsule. Suitable for temperature sensing in laboratory equipment and machinery, in refrigeration and air conditioning applications and in heating applications.



TECHNICAL DATA

TEMPERATURE RANGE	(-50 +120)°C
MODEL	Bracelet
SENSOR	PT100
CAPSULE	6x6x15 mm + copper plate
CABLE	TPE flat
TERMINITIONS	Tin-plated, tips, connectors (other terminations available on request)
RESPONSE TIME	10 s in non-static liquid at 63.2% (depends on configuration)
IDENTIFICATION	Laser on cable, label (customizable)
DECLARATIONS OF CONFORMITY	CE MARKING, CONFLICT MINERALS, REACH, REACH, ROHS

IDI00C

IP67 COPPER CAPSULE BRACELET PROBES

PRODUCT FAMILY 30GB10

Probe with bracelet, PT1000 sensor, TPE round cable, 6x6x15 mm + copper capsule. Suitable for temperature sensing in refrigeration and air conditioning applications and in heating applications.



TECHNICAL DATA

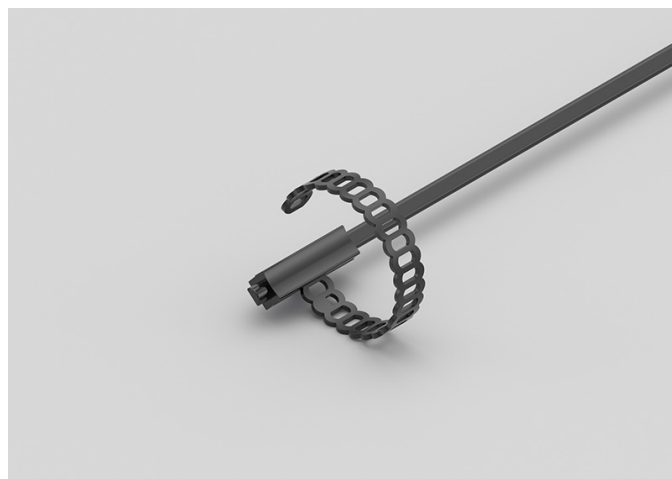
TEMPERATURE RANGE	(-50 +110)°C
MODEL	Bracelet
SENSOR	PT1000
CAPSULE	6x6x15 mm + copper
CABLE	TPE round
TERMINITIONS	Tin-plated, tips, connectors (other terminations available on request)
RESPONSE TIME	10 s in non-static liquid at 63.2% (depends on configuration)
IDENTIFICATION	Laser on cable, label (customizable)
DECLARATIONS OF CONFORMITY	CE MARKING, CONFLICT MINERALS, REACH, REACH, ROHS

IEI00C

IP67 RUBBER BRACELET PROBES

PRODUCT FAMILY 30GB07

Probe with bracelet, PT1000 sensor, TPE flat cable, 6x6x15 mm capsule. Suitable for temperature sensing in laboratory equipment and machinery, in refrigeration and air conditioning applications, in air quality control applications and in heating applications.



TECHNICAL DATA

TEMPERATURE RANGE	(-50 +120)°C
MODEL	Bracelet
SENSOR	PT1000
CAPSULE	6x6x15 mm
CABLE	TPE flat
TERMINITIONS	Tin-plated, tips, connectors (other terminations available on request)
RESPONSE TIME	10 s in non-static liquid at 63.2% (depends on configuration)
IDENTIFICATION	Laser on cable, label (customizable)
DECLARATIONS OF CONFORMITY	CE MARKING, CONFLICT MINERALS, REACH, REACH, ROHS

IEI03C

IP55 COPPER PLATE BRACELET PROBES

PRODUCT FAMILY 30GB15

Probe with bracelet, PT1000 sensor, TPE flat cable, 6x6x15 mm + copper plate capsule. Suitable for temperature sensing in refrigeration and air conditioning applications and in heating applications.



TECHNICAL DATA

TEMPERATURE RANGE	(-50 +120)°C
MODEL	Bracelet
SENSOR	PT1000
CAPSULE	6x6x15 mm + copper plate
CABLE	TPE flat
TERMINITIONS	Tin-plated, tips, connectors (other terminations available on request)
RESPONSE TIME	10 s in non-static liquid at 63.2% (depends on configuration)
IDENTIFICATION	Laser on cable, label (customizable)
DECLARATIONS OF CONFORMITY	CE MARKING, CONFLICT MINERALS, REACH, REACH, ROHS

IVB03C

PROBES WITH STANDARD METAL CAPSULE

PRODUCT FAMILY 15CA05

Probe with steel capsule, PT1000 sensor, in glass fibre cable, diameter 6x40 mm capsule. Suitable for temperature sensing in refrigeration and air conditioning applications and in heating applications.



TECHNICAL DATA

TEMPERATURE RANGE	(0 +350)°C
MODEL	Steel capsule
SENSOR	PT1000
CAPSULE	Diameter 6x40 mm
CABLE	Glass fibre
TERMINITIONS	Tin-plated, tips, connectors (other terminations available on request)
RESPONSE TIME	10 s in non-static liquid at 63.2% (depends on configuration)
IDENTIFICATION	Laser on cable, label (customizable)
DECLARATIONS OF CONFORMITY	CE MARKING, CONFLICT MINERALS, MOCA, REACH, REACH, ROHS

IVU00C

METAL CAPSULE PROBES WITH FLANGE

PRODUCT FAMILY 15CA25

Contact probe with PT1000 sensor, in glass fibre cable, diameter 4x40 mm capsule. Suitable for temperature sensing in refrigeration and air conditioning applications, in air quality control applications, in heating applications, in the field of renewable energy and in the food field.



TECHNICAL DATA

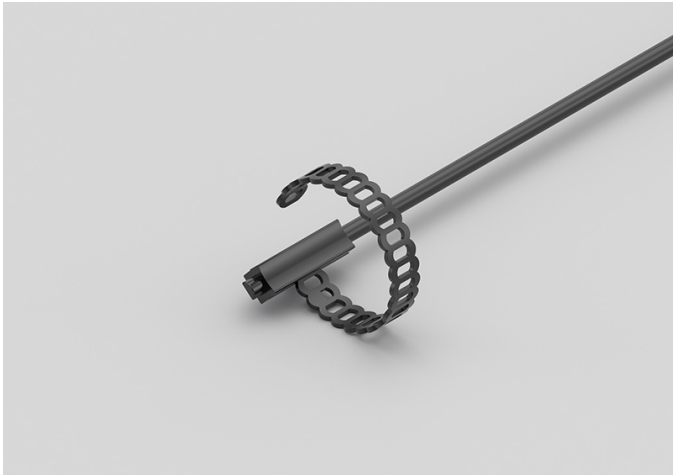
TEMPERATURE RANGE	(0 +350)°C
MODEL	Contact
SENSOR	PT1000
CAPSULE	Diameter 4x40 mm
CABLE	Glass fibre
TERMINITIONS	Tin-plated, tips, connectors (other terminations available on request)
RESPONSE TIME	10 s in non-static liquid at 63.2% (depends on configuration)
IDENTIFICATION	Laser on cable, label (customizable)
DECLARATIONS OF CONFORMITY	CE MARKING, CONFLICT MINERALS, REACH, REACH, ROHS

NDI00C

IP68 RUBBER BRACELET PROBES

PRODUCT FAMILY 30GB05

Probe with bracelet, NTC sensor, TPE round cable, 6x6x15 mm capsule. Suitable for temperature sensing in refrigeration and air conditioning applications, in heating applications and in the field of renewable energy.



TECHNICAL DATA

TEMPERATURE RANGE	(-50 +110)°C
MODEL	Bracelet
SENSOR	NTC
CAPSULE	6x6x15 mm
CABLE	TPE round
TERMINITIONS	Tin-plated, tips, connectors (other terminations available on request)
RESPONSE TIME	10 s in non-static liquid at 63.2% (depends on configuration)
IDENTIFICATION	Laser on cable, label (customizable)
DECLARATIONS OF CONFORMITY	CE MARKING, CONFLICT MINERALS, REACH, REACH, ROHS

NDI01C

IP67 COPPER CAPSULE BRACELET PROBES

PRODUCT FAMILY 30GB10

Probe with bracelet, NTC sensor, TPE round cable, 6x6x15 mm + copper capsule. Suitable for temperature sensing in refrigeration and air conditioning applications, in heating applications and in the field of renewable energy.



TECHNICAL DATA

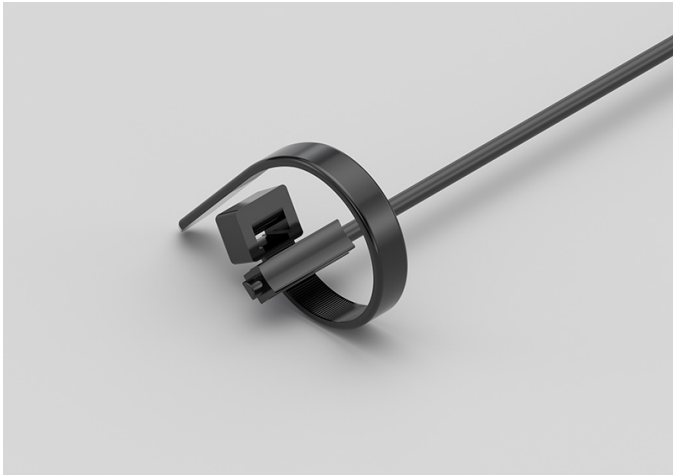
TEMPERATURE RANGE	(-50 +110)°C
MODEL	Bracelet
SENSOR	NTC
CAPSULE	6x6x15 mm + copper
CABLE	TPE round
TERMINITIONS	Tin-plated, tips, connectors (other terminations available on request)
RESPONSE TIME	10 s in non-static liquid at 63.2% (depends on configuration)
IDENTIFICATION	Laser on cable, label (customizable)
DECLARATIONS OF CONFORMITY	CE MARKING, CONFLICT MINERALS, REACH, REACH, ROHS

NDI06C

IP68 RUBBER BRACELET
PROBE WITH METAL
CLAMP

PRODUCT FAMILY 30GB06

Probe with bracelet, NTC sensor, TPE round cable, 6x6x15 mm capsule. Suitable for temperature sensing in refrigeration and air conditioning applications, in heating applications and in the field of renewable energy.



TECHNICAL DATA

TEMPERATURE RANGE	(-50 +110)°C
MODEL	Bracelet
SENSOR	NTC
CAPSULE	6x6x15 mm
CABLE	TPE round
TERMINITIONS	Tin-plated, tips, connectors (other terminations available on request)
RESPONSE TIME	10 s in non-static liquid at 63.2% (depends on configuration)
IDENTIFICATION	Laser on cable, label (customizable)
DECLARATIONS OF CONFORMITY	CE MARKING, CONFLICT MINERALS, REACH, REACH, ROHS

NEH00C

IP67 RUBBER PROBES Ø6X20 MM STEEL CAPSULE

PRODUCT FAMILY 30GC12

IP67 probe with NTC sensor, TPE flat cable, diameter 6x20 mm capsule. Suitable for temperature sensing in refrigeration and air conditioning applications, in air quality control applications, in heating applications and in the food field.



TECHNICAL DATA

TEMPERATURE RANGE	(-50 +120)°C
MODEL	IP67
SENSOR	NTC
CAPSULE	Diameter 6x20 mm
CABLE	TPE flat
TERMINITIONS	Tin-plated, tips, connectors (other terminations available on request)
RESPONSE TIME	10 s in non-static liquid at 63.2% (depends on configuration)
IDENTIFICATION	Laser on cable, label (customizable)
DECLARATIONS OF CONFORMITY	CE MARKING, CONFLICT MINERALS, REACH, REACH, ROHS

NEI01C

IP55 COPPER PLATE BRACELET PROBES

PRODUCT FAMILY 30GB15

Probe with bracelet, NTC sensor, TPE flat cable, 6x6x15 mm + copper plate capsule. Suitable for temperature sensing in refrigeration and air conditioning applications, in air quality control applications, in heating applications and in the field of renewable energy.



TECHNICAL DATA

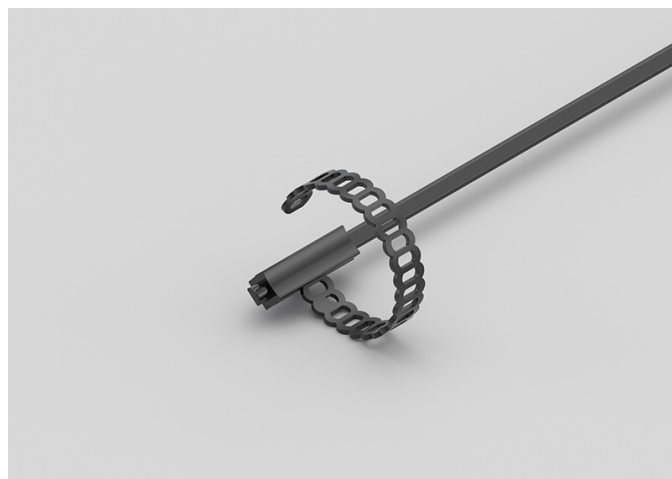
TEMPERATURE RANGE	(-50 +120)°C
MODEL	Bracelet
SENSOR	NTC
CAPSULE	6x6x15 mm + copper plate
CABLE	TPE flat
TERMINITIONS	Tin-plated, tips, connectors (other terminations available on request)
RESPONSE TIME	10 s in non-static liquid at 63.2% (depends on configuration)
IDENTIFICATION	Laser on cable, label (customizable)
DECLARATIONS OF CONFORMITY	CE MARKING, CONFLICT MINERALS, REACH, REACH, ROHS

NEI02C

IP67 RUBBER BRACELET PROBES

PRODUCT FAMILY 30GB07

Probe with bracelet, NTC sensor, TPE flat cable, 6x6x15 mm capsule. Suitable for temperature sensing in laboratory equipment and machinery, in refrigeration and air conditioning applications, in air quality control applications and in heating applications.



TECHNICAL DATA

TEMPERATURE RANGE	(-50 +120)°C
MODEL	Bracelet
SENSOR	NTC
CAPSULE	6x6x15 mm
CABLE	TPE flat
TERMINITIONS	Tin-plated, tips, connectors (other terminations available on request)
RESPONSE TIME	10 s in non-static liquid at 63.2% (depends on configuration)
IDENTIFICATION	Laser on cable, label (customizable)
DECLARATIONS OF CONFORMITY	CE MARKING, CONFLICT MINERALS, REACH, REACH, ROHS

NEK00C

IP67 RUBBER PROBES

Ø5X20 MM RUBBER CAPSULE

PRODUCT FAMILY 30GC11

IP67 probe with NTC sensor, TPE flat cable, diameter 5x20 mm capsule. Suitable for temperature sensing in refrigeration and air conditioning applications, in air quality control applications, in heating applications and in the food field.



TECHNICAL DATA

TEMPERATURE RANGE	(-50 +120)°C
MODEL	IP67
SENSOR	NTC
CAPSULE	Diameter 5x20 mm
CABLE	TPE flat
TERMINITIONS	Tin-plated, tips, connectors (other terminations available on request)
RESPONSE TIME	10 s in non-static liquid at 63.2% (depends on configuration)
IDENTIFICATION	Laser on cable, label (customizable)
DECLARATIONS OF CONFORMITY	CE MARKING, CONFLICT MINERALS, REACH, REACH, ROHS

RVU00C

PROBES WITH FAST METAL CAPSULE

PRODUCT FAMILY 15CA10

Probe with steel capsule, NTC sensor, in glass fibre cable, diameter 4x40 mm capsule. Suitable for temperature sensing in heating applications and in the food field.



TECHNICAL DATA

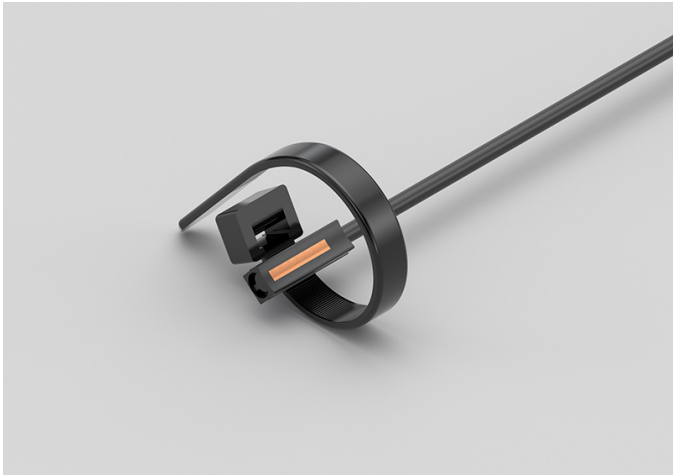
TEMPERATURE RANGE	(0 +300)°C
MODEL	Steel capsule
SENSOR	NTC
CAPSULE	Diameter 4x40 mm
CABLE	Glass fibre
TERMINITIONS	Tin-plated, tips, connectors (other terminations available on request)
RESPONSE TIME	10 s in non-static liquid at 63.2% (depends on configuration)
IDENTIFICATION	Laser on cable, label (customizable)
DECLARATIONS OF CONFORMITY	CE MARKING, CONFLICT MINERALS, MOCA, REACH, REACH, ROHS

ADI02C

IP67 COPPER CAPSULE
BRACELET PROBES WITH
METAL CLAMP

PRODUCT FAMILY 30GB11

Probe with bracelet, PTC sensor, TPE round cable, 6x6x15 mm + copper capsule. Suitable for temperature sensing in heating applications, in the field of renewable energy and in the food field.



TECHNICAL DATA

TEMPERATURE RANGE	(-50 +110)°C
MODEL	Bracelet
SENSOR	PTC
CAPSULE	6x6x15 mm + copper
CABLE	TPE round
TERMINITIONS	Tin-plated, tips, connectors (other terminations available on request)
RESPONSE TIME	10 s in non-static liquid at 63.2% (depends on configuration)
IDENTIFICATION	Laser on cable, label (customizable)
DECLARATIONS OF CONFORMITY	CE MARKING, CONFLICT MINERALS, REACH, REACH, ROHS

ADI03C

IP67 COPPER CAPSULE BRACELET PROBES

PRODUCT FAMILY 30GB10

Probe with bracelet, PTC sensor, TPE round cable, 6x6x15 mm + copper capsule. Suitable for temperature sensing in heating applications, in the field of renewable energy and in the food field.



TECHNICAL DATA

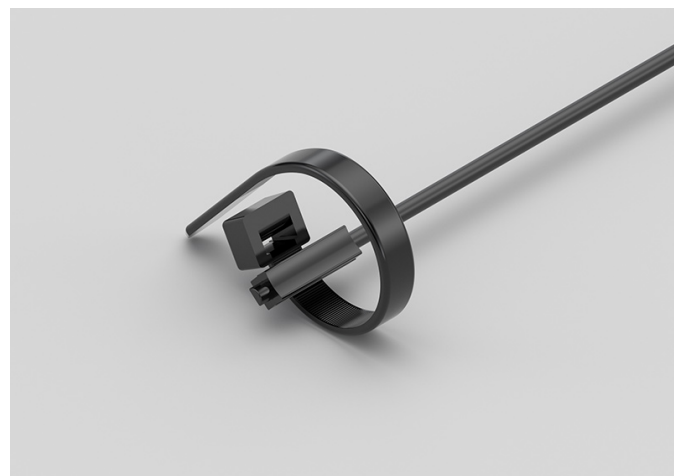
TEMPERATURE RANGE	(-50 +110)°C
MODEL	Bracelet
SENSOR	PTC
CAPSULE	6x6x15 mm + copper
CABLE	TPE round
TERMINITIONS	Tin-plated, tips, connectors (other terminations available on request)
RESPONSE TIME	10 s in non-static liquid at 63.2% (depends on configuration)
IDENTIFICATION	Laser on cable, label (customizable)
DECLARATIONS OF CONFORMITY	CE MARKING, CONFLICT MINERALS, REACH, REACH, ROHS

ADI04C

IP68 RUBBER BRACELET PROBE WITH METAL CLAMP

PRODUCT FAMILY 30GB06

Probe with bracelet, PTC sensor, TPE round cable, 6x6x15 mm capsule. Suitable for temperature sensing in laboratory equipment and machinery, in heating applications, in the field of renewable energy and in the food field.



TECHNICAL DATA

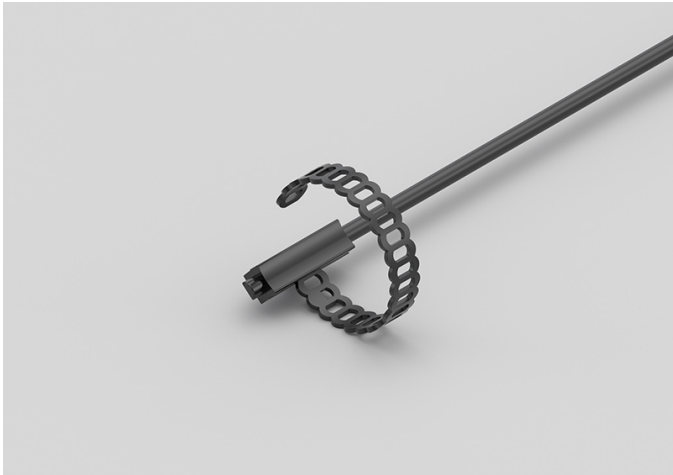
TEMPERATURE RANGE	(-50 +110)°C
MODEL	Bracelet
SENSOR	PTC
CAPSULE	6x6x15 mm
CABLE	TPE round
TERMINITIONS	Tin-plated, tips, connectors (other terminations available on request)
RESPONSE TIME	10 s in non-static liquid at 63.2% (depends on configuration)
IDENTIFICATION	Laser on cable, label (customizable)
DECLARATIONS OF CONFORMITY	CE MARKING, CONFLICT MINERALS, REACH, REACH, ROHS

ADI05C

IP68 RUBBER BRACELET PROBES

PRODUCT FAMILY 30GB05

Probe with bracelet, PTC sensor, TPE round cable, 6x6x15 mm capsule. Suitable for temperature sensing in laboratory equipment and machinery, in heating applications, in the field of renewable energy and in the food field.



TECHNICAL DATA

TEMPERATURE RANGE	(-50 +110)°C
MODEL	Bracelet
SENSOR	PTC
CAPSULE	6x6x15 mm
CABLE	TPE round
TERMINITIONS	Tin-plated, tips, connectors (other terminations available on request)
RESPONSE TIME	10 s in non-static liquid at 63.2% (depends on configuration)
IDENTIFICATION	Laser on cable, label (customizable)
DECLARATIONS OF CONFORMITY	CE MARKING, CONFLICT MINERALS, REACH, REACH, ROHS

AEE00C

IP67 RUBBER PROBES

6X6X15 MM RUBBER CAPSULE

PRODUCT FAMILY 30GC10

IP67 probe with PTC sensor, TPE flat cable, 1,5x5x6 mm capsule. Suitable for temperature sensing in laboratory equipment and machinery, in refrigeration and air conditioning applications, in air quality control applications and in the food field.



TECHNICAL DATA

TEMPERATURE RANGE	(-50 +120)°C
MODEL	IP67
SENSOR	PTC
CAPSULE	1,5x5x6 mm
CABLE	TPE flat
TERMINITIONS	Tin-plated, tips, connectors (other terminations available on request)
RESPONSE TIME	10 s in non-static liquid at 63.2% (depends on configuration)
IDENTIFICATION	Laser on cable, label (customizable)
DECLARATIONS OF CONFORMITY	CE MARKING, CONFLICT MINERALS, REACH, REACH, ROHS

AEH03C

IP67 RUBBER PROBES Ø6X40..50/60 MM STEEL CAPSULE

PRODUCT FAMILY 30GC13

IP67 probe with PTC sensor, TPE flat cable, diameter 6x50 mm capsule. Suitable for temperature sensing in refrigeration and air conditioning applications, in air quality control applications, in heating applications and in the food field.



TECHNICAL DATA

TEMPERATURE RANGE	(-50 +120)°C
MODEL	IP67
SENSOR	PTC
CAPSULE	Diameter 6x50 mm
CABLE	TPE flat
TERMINITIONS	Tin-plated, tips, connectors (other terminations available on request)
RESPONSE TIME	10 s in non-static liquid at 63.2% (depends on configuration)
IDENTIFICATION	Laser on cable, label (customizable)
DECLARATIONS OF CONFORMITY	CE MARKING, CONFLICT MINERALS, REACH, REACH, ROHS

AEH04C

IP67 RUBBER PROBES

Ø6X20 MM STEEL CAPSULE

PRODUCT FAMILY 30GC12

IP67 probe with PTC sensor, TPE flat cable, diameter 6x20 mm capsule. Suitable for temperature sensing in refrigeration and air conditioning applications, in air quality control applications, in heating applications and in the food field.



TECHNICAL DATA

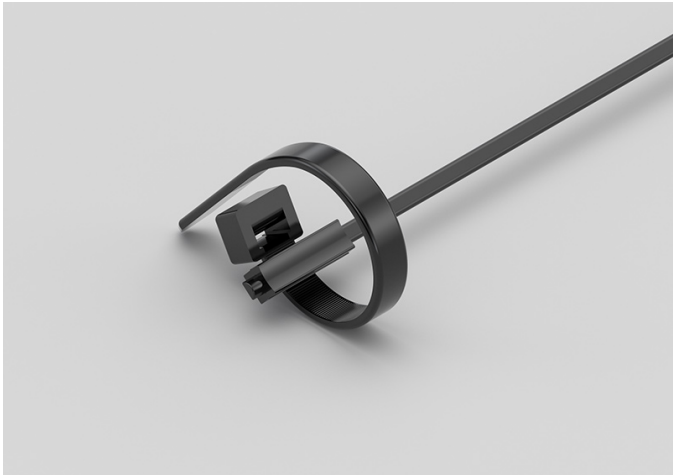
TEMPERATURE RANGE	(-50 +120)°C
MODEL	IP67
SENSOR	PTC
CAPSULE	Diameter 6x20 mm
CABLE	TPE flat
TERMINITIONS	Tin-plated, tips, connectors (other terminations available on request)
RESPONSE TIME	10 s in non-static liquid at 63.2% (depends on configuration)
IDENTIFICATION	Laser on cable, label (customizable)
DECLARATIONS OF CONFORMITY	CE MARKING, CONFLICT MINERALS, REACH, REACH, ROHS

AEI03C

IP67 RUBBER BRACELET PROBES WITH METAL CLAMP

PRODUCT FAMILY 30GB08

Probe with bracelet, PTC sensor, TPE flat cable, 6x6x15 mm capsule. Suitable for temperature sensing in laboratory equipment and machinery, in heating applications and in the food field.



TECHNICAL DATA

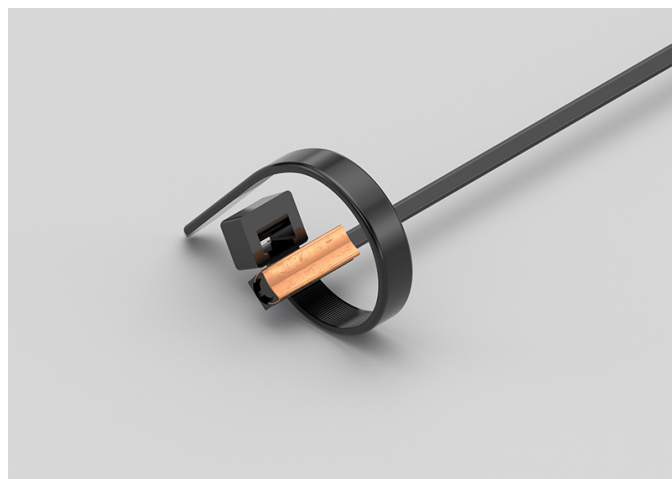
TEMPERATURE RANGE	(-50 +120)°C
MODEL	Bracelet
SENSOR	PTC
CAPSULE	6x6x15 mm
CABLE	TPE flat
TERMINITIONS	Tin-plated, tips, connectors (other terminations available on request)
RESPONSE TIME	10 s in non-static liquid at 63.2% (depends on configuration)
IDENTIFICATION	Laser on cable, label (customizable)
DECLARATIONS OF CONFORMITY	CE MARKING, CONFLICT MINERALS, REACH, REACH, ROHS

AEI04C

IP55 COPPER PLATE BRACELET PROBES WITH METAL CLAMP

PRODUCT FAMILY 30GB16

Probe with bracelet, PTC sensor, TPE flat cable, 6x6x15 mm + copper plate capsule. Suitable for temperature sensing in laboratory equipment and machinery, in heating applications and in the food field.



TECHNICAL DATA

TEMPERATURE RANGE	(-50 +120)°C
MODEL	Bracelet
SENSOR	PTC
CAPSULE	6x6x15 mm + copper plate
CABLE	TPE flat
TERMINITIONS	Tin-plated, tips, connectors (other terminations available on request)
RESPONSE TIME	10 s in non-static liquid at 63.2% (depends on configuration)
IDENTIFICATION	Laser on cable, label (customizable)
DECLARATIONS OF CONFORMITY	CE MARKING, CONFLICT MINERALS, REACH, REACH, ROHS

AEK00C

IP67 RUBBER PROBES

Ø5X20 MM RUBBER CAPSULE

PRODUCT FAMILY 30GC11

IP67 probe with PTC sensor, TPE flat cable, diameter 5x20 mm capsule. Suitable for temperature sensing in heating applications and in the food field.



TECHNICAL DATA

TEMPERATURE RANGE	(-50 +120)°C
MODEL	IP67
SENSOR	PTC
CAPSULE	Diameter 5x20 mm
CABLE	TPE flat
TERMINITIONS	Tin-plated, tips, connectors (other terminations available on request)
RESPONSE TIME	10 s in non-static liquid at 63.2% (depends on configuration)
IDENTIFICATION	Laser on cable, label (customizable)
DECLARATIONS OF CONFORMITY	CE MARKING, CONFLICT MINERALS, REACH, REACH, ROHS

AGB26C

METAL CAPSULE PROBES WITH FLANGE

PRODUCT FAMILY 15CA25

Contact probe with PTC sensor, in silicone cable, diameter 6x40 mm capsule. Suitable for temperature sensing in laboratory equipment and machinery, in refrigeration and air conditioning applications, in heating applications, in the food field and in the industrial field.



TECHNICAL DATA

TEMPERATURE RANGE	(-50 +150)°C
MODEL	Contact
SENSOR	PTC
CAPSULE	Diameter 6x40 mm
CABLE	Silicone
TERMINITIONS	Tin-plated, tips, connectors (other terminations available on request)
RESPONSE TIME	10 s in non-static liquid at 63.2% (depends on configuration)
IDENTIFICATION	Laser on cable, label (customizable)
DECLARATIONS OF CONFORMITY	CE MARKING, CONFLICT MINERALS, REACH, REACH, ROHS

AGB27C

STANDARD EYELET PROBES

PRODUCT FAMILY 15C005

Contact probe with PTC sensor, in silicone cable, diameter 6x40 mm capsule. Suitable for temperature sensing in heating applications and in the food field.



TECHNICAL DATA

TEMPERATURE RANGE	(-50 +150)°C
MODEL	Contact
SENSOR	PTC
CAPSULE	Diameter 6x40 mm
CABLE	Silicone
TERMINITIONS	Tin-plated, tips, connectors (other terminations available on request)
RESPONSE TIME	10 s in non-static liquid at 63.2% (depends on configuration)
IDENTIFICATION	Laser on cable, label (customizable)
DECLARATIONS OF CONFORMITY	CE MARKING, CONFLICT MINERALS, REACH, REACH, ROHS

AGM03C

PROBES WITH WELDED THREADED CONNECTION

PRODUCT FAMILY 15CR05

Probe with connector, PTC sensor, in silicone cable, diameter 4x40 mm capsule. Suitable for temperature sensing in laboratory equipment and machinery, in refrigeration and air conditioning applications, in air quality control applications, in heating applications, in the field of renewable energy and in the food field.



TECHNICAL DATA

TEMPERATURE RANGE	(-50 +150)°C
MODEL	With connector
SENSOR	PTC
CAPSULE	Diameter 4x40 mm
CABLE	Silicone
TERMINITIONS	Tin-plated, tips, connectors (other terminations available on request)
RESPONSE TIME	10 s in non-static liquid at 63.2% (depends on configuration)
IDENTIFICATION	Laser on cable, label (customizable)
DECLARATIONS OF CONFORMITY	CE MARKING, CONFLICT MINERALS, REACH, REACH, ROHS

AGM04C

PROBES WITH SLIDING THREADED CONNECTION

PRODUCT FAMILY 15CR10

Probe with connector, PTC sensor, in silicone cable, diameter 4x40 mm capsule. Suitable for temperature sensing in laboratory equipment and machinery, in refrigeration and air conditioning applications, in air quality control applications, in heating applications, in the field of renewable energy and in the food field.



TECHNICAL DATA

TEMPERATURE RANGE	(-50 +150)°C
MODEL	With connector
SENSOR	PTC
CAPSULE	Diameter 4x40 mm
CABLE	Silicone
TERMINITIONS	Tin-plated, tips, connectors (other terminations available on request)
RESPONSE TIME	10 s in non-static liquid at 63.2% (depends on configuration)
IDENTIFICATION	Laser on cable, label (customizable)
DECLARATIONS OF CONFORMITY	CE MARKING, CONFLICT MINERALS, REACH, REACH, ROHS

AGR00C

PROBES WITH TAPERED METAL CAPSULE

PRODUCT FAMILY 15CA20

Probe with steel capsule, PTC sensor, in silicone cable, diameter 3X15 mm + diameter 6X40 mm capsule. Suitable for temperature sensing in air quality control applications.



TECHNICAL DATA

TEMPERATURE RANGE	(-50 +150)°C
MODEL	Steel capsule
SENSOR	PTC
CAPSULE	Diameter 3X15 mm + Diameter 6X40 mm
CABLE	Silicone
TERMINITIONS	Tin-plated, tips, connectors (other terminations available on request)
RESPONSE TIME	10 s in non-static liquid at 63.2% (depends on configuration)
IDENTIFICATION	Laser on cable, label (customizable)
DECLARATIONS OF CONFORMITY	CE MARKING, CONFLICT MINERALS, REACH, REACH, ROHS

AGU01C

STANDARD EYELET PROBES

PRODUCT FAMILY 15C005

Contact probe with PTC sensor, in silicone cable, diameter 4x40 mm capsule. Suitable for temperature sensing in air quality control applications.



TECHNICAL DATA

TEMPERATURE RANGE	(-50 +150)°C
MODEL	Contact
SENSOR	PTC
CAPSULE	Diameter 4x40 mm
CABLE	Silicone
TERMINITIONS	Tin-plated, tips, connectors (other terminations available on request)
RESPONSE TIME	10 s in non-static liquid at 63.2% (depends on configuration)
IDENTIFICATION	Laser on cable, label (customizable)
DECLARATIONS OF CONFORMITY	CE MARKING, CONFLICT MINERALS, REACH, REACH, ROHS

AGU02C

METAL CAPSULE PROBES WITH FLANGE

PRODUCT FAMILY 15CA25

Contact probe with PTC sensor, in silicone cable, diameter 4x40 mm capsule. Suitable for temperature sensing in refrigeration and air conditioning applications, in air quality control applications, in heating applications, in the field of renewable energy and in the food field.



TECHNICAL DATA

TEMPERATURE RANGE	(-50 +150)°C
MODEL	Contact
SENSOR	PTC
CAPSULE	Diameter 4x40 mm
CABLE	Silicone
TERMINITIONS	Tin-plated, tips, connectors (other terminations available on request)
RESPONSE TIME	10 s in non-static liquid at 63.2% (depends on configuration)
IDENTIFICATION	Laser on cable, label (customizable)
DECLARATIONS OF CONFORMITY	CE MARKING, CONFLICT MINERALS, REACH, REACH, ROHS

AGU04C

PROBES WITH FAST METAL CAPSULE

PRODUCT FAMILY 15CA10

Probe with steel capsule, PTC sensor, in silicone cable, diameter 4x40 mm capsule. Suitable for temperature sensing in refrigeration and air conditioning applications, in air quality control applications, in heating applications, in the field of renewable energy and in the food field.



TECHNICAL DATA

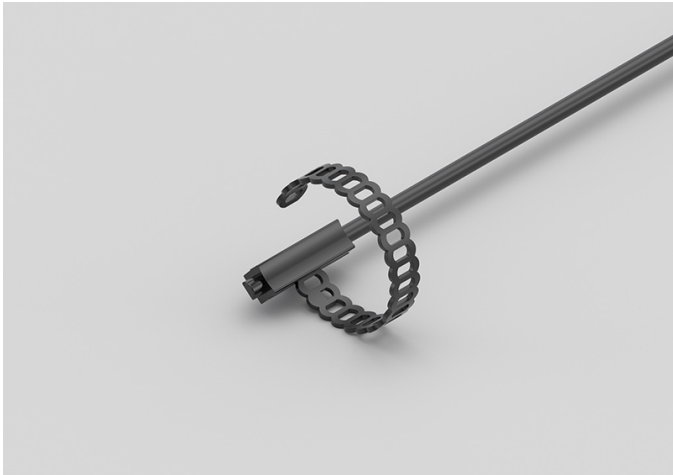
TEMPERATURE RANGE	(-50 +150)°C
MODEL	Steel capsule
SENSOR	PTC
CAPSULE	Diameter 4x40 mm
CABLE	Silicone
TERMINITIONS	Tin-plated, tips, connectors (other terminations available on request)
RESPONSE TIME	10 s in non-static liquid at 63.2% (depends on configuration)
IDENTIFICATION	Laser on cable, label (customizable)
DECLARATIONS OF CONFORMITY	CE MARKING, CONFLICT MINERALS, MOCA, REACH, REACH, ROHS

GDI03C

IP68 RUBBER BRACELET PROBES

PRODUCT FAMILY 30GB05

Probe with bracelet, PT100 sensor, TPE round cable, 6x6x15 mm capsule. Suitable for temperature sensing in laboratory equipment and machinery, in heating applications and in the food field.



TECHNICAL DATA

TEMPERATURE RANGE	(-50 +110)°C
MODEL	Bracelet
SENSOR	PT100
CAPSULE	6x6x15 mm
CABLE	TPE round
TERMINITIONS	Tin-plated, tips, connectors (other terminations available on request)
RESPONSE TIME	10 s in non-static liquid at 63.2% (depends on configuration)
IDENTIFICATION	Laser on cable, label (customizable)
DECLARATIONS OF CONFORMITY	CE MARKING, CONFLICT MINERALS, REACH, REACH, ROHS

GDI04C

IP67 COPPER CAPSULE BRACELET PROBES WITH METAL CLAMP

PRODUCT FAMILY 30GB11

Probe with bracelet, PT100 sensor, TPE round cable, 6x6x15 mm + copper capsule. Suitable for temperature sensing in refrigeration and air conditioning applications, in air quality control applications, in the field of renewable energy and in the food field.



TECHNICAL DATA

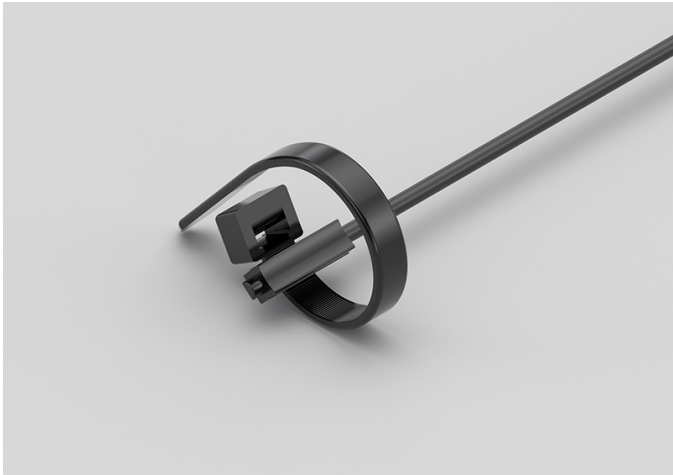
TEMPERATURE RANGE	(-50 +110)°C
MODEL	Bracelet
SENSOR	PT100
CAPSULE	6x6x15 mm + copper
CABLE	TPE round
TERMINITIONS	Tin-plated, tips, connectors (other terminations available on request)
RESPONSE TIME	10 s in non-static liquid at 63.2% (depends on configuration)
IDENTIFICATION	Laser on cable, label (customizable)
DECLARATIONS OF CONFORMITY	CE MARKING, CONFLICT MINERALS, REACH, REACH, ROHS

GDI05C

IP68 RUBBER BRACELET PROBE WITH METAL CLAMP

PRODUCT FAMILY 30GB06

Probe with bracelet, PT100 sensor, TPE round cable, 6x6x15 mm capsule. Suitable for temperature sensing in refrigeration and air conditioning applications, in air quality control applications, in the field of renewable energy and in the food field.



TECHNICAL DATA

TEMPERATURE RANGE	(-50 +110)°C
MODEL	Bracelet
SENSOR	PT100
CAPSULE	6x6x15 mm
CABLE	TPE round
TERMINITIONS	Tin-plated, tips, connectors (other terminations available on request)
RESPONSE TIME	10 s in non-static liquid at 63.2% (depends on configuration)
IDENTIFICATION	Laser on cable, label (customizable)
DECLARATIONS OF CONFORMITY	CE MARKING, CONFLICT MINERALS, REACH, REACH, ROHS

GDI06C

IP67 COPPER CAPSULE BRACELET PROBES

PRODUCT FAMILY 30GB10

Probe with bracelet, PT100 sensor, TPE round cable, 6x6x15 mm + copper capsule. Suitable for temperature sensing in refrigeration and air conditioning applications, in air quality control applications, in the field of renewable energy and in the food field.



TECHNICAL DATA

TEMPERATURE RANGE	(-50 +110)°C
MODEL	Bracelet
SENSOR	PT100
CAPSULE	6x6x15 mm + copper
CABLE	TPE round
TERMINITIONS	Tin-plated, tips, connectors (other terminations available on request)
RESPONSE TIME	10 s in non-static liquid at 63.2% (depends on configuration)
IDENTIFICATION	Laser on cable, label (customizable)
DECLARATIONS OF CONFORMITY	CE MARKING, CONFLICT MINERALS, REACH, REACH, ROHS

GEE00C

IP67 RUBBER PROBES

6X6X15 MM RUBBER CAPSULE

PRODUCT FAMILY 30GC10

IP67 probe with PT100 sensor, TPE flat cable, 1,5x5x6 mm capsule. Suitable for temperature sensing in refrigeration and air conditioning applications, in heating applications, in the field of renewable energy, in the food field and in the industrial field.



TECHNICAL DATA

TEMPERATURE RANGE	(-50 +120)°C
MODEL	IP67
SENSOR	PT100
CAPSULE	1,5x5x6 mm
CABLE	TPE flat
TERMINITIONS	Tin-plated, tips, connectors (other terminations available on request)
RESPONSE TIME	10 s in non-static liquid at 63.2% (depends on configuration)
IDENTIFICATION	Laser on cable, label (customizable)
DECLARATIONS OF CONFORMITY	CE MARKING, CONFLICT MINERALS, REACH, REACH, ROHS

GEH00C

IP67 RUBBER PROBES Ø6X20 MM STEEL CAPSULE

PRODUCT FAMILY 30GC12

IP67 probe with PT100 sensor, TPE flat cable, diameter 6x20 mm capsule. Suitable for temperature sensing in heating applications, in the field of renewable energy and in the food field.



TECHNICAL DATA

TEMPERATURE RANGE	(-50 +120)°C
MODEL	IP67
SENSOR	PT100
CAPSULE	Diameter 6x20 mm
CABLE	TPE flat
TERMINITIONS	Tin-plated, tips, connectors (other terminations available on request)
RESPONSE TIME	10 s in non-static liquid at 63.2% (depends on configuration)
IDENTIFICATION	Laser on cable, label (customizable)
DECLARATIONS OF CONFORMITY	CE MARKING, CONFLICT MINERALS, REACH, REACH, ROHS

GEH01C

IP67 RUBBER PROBES
Ø6X40..50/60 MM STEEL
CAPSULE

PRODUCT FAMILY 30GC13

IP67 probe with PT100 sensor, TPE flat cable, diameter 6x50 mm capsule. Suitable for temperature sensing in heating applications, in the field of renewable energy and in the food field.



TECHNICAL DATA

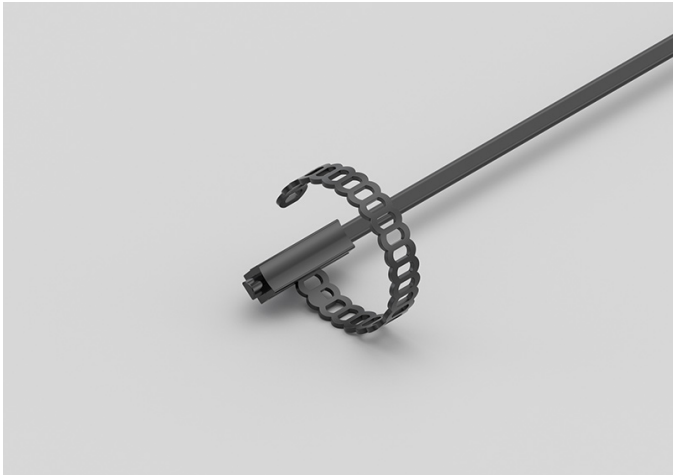
TEMPERATURE RANGE	(-50 +120)°C
MODEL	IP67
SENSOR	PT100
CAPSULE	Diameter 6x50 mm
CABLE	TPE flat
TERMINITIONS	Tin-plated, tips, connectors (other terminations available on request)
RESPONSE TIME	10 s in non-static liquid at 63.2% (depends on configuration)
IDENTIFICATION	Laser on cable, label (customizable)
DECLARATIONS OF CONFORMITY	CE MARKING, CONFLICT MINERALS, REACH, REACH, ROHS

GEI01C

IP67 RUBBER BRACELET PROBES

PRODUCT FAMILY 30GB07

Probe with bracelet, PT100 sensor, TPE flat cable, 6x6x15 mm capsule. Suitable for temperature sensing in heating applications, in the field of renewable energy and in the food field.



TECHNICAL DATA

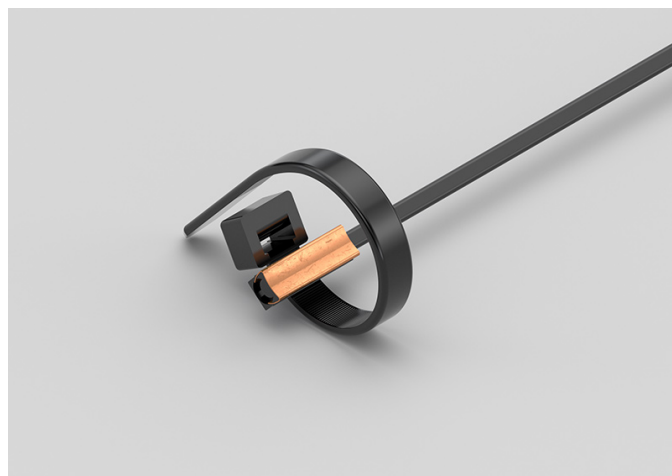
TEMPERATURE RANGE	(-50 +120)°C
MODEL	Bracelet
SENSOR	PT100
CAPSULE	6x6x15 mm
CABLE	TPE flat
TERMINITIONS	Tin-plated, tips, connectors (other terminations available on request)
RESPONSE TIME	10 s in non-static liquid at 63.2% (depends on configuration)
IDENTIFICATION	Laser on cable, label (customizable)
DECLARATIONS OF CONFORMITY	CE MARKING, CONFLICT MINERALS, REACH, REACH, ROHS

GEI02C

IP55 COPPER PLATE BRACELET PROBES WITH METAL CLAMP

PRODUCT FAMILY 30GB16

Probe with bracelet, PT100 sensor, TPE flat cable, 6x6x15 mm + copper plate capsule. Suitable for temperature sensing in refrigeration and air conditioning applications, in air quality control applications and in the food field.



TECHNICAL DATA

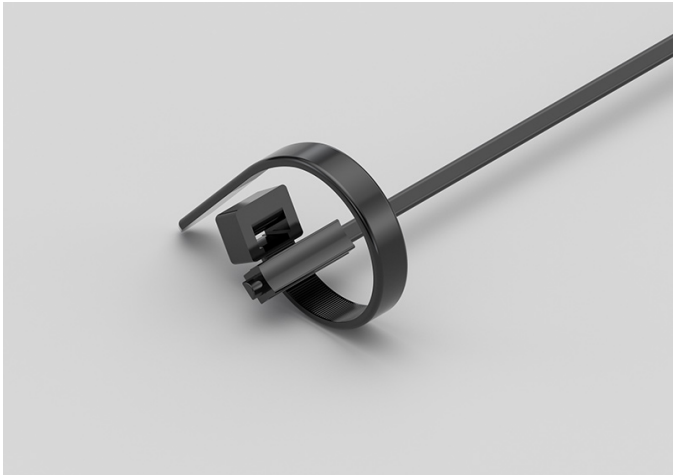
TEMPERATURE RANGE	(-50 +120)°C
MODEL	Bracelet
SENSOR	PT100
CAPSULE	6x6x15 mm + copper plate
CABLE	TPE flat
TERMINITIONS	Tin-plated, tips, connectors (other terminations available on request)
RESPONSE TIME	10 s in non-static liquid at 63.2% (depends on configuration)
IDENTIFICATION	Laser on cable, label (customizable)
DECLARATIONS OF CONFORMITY	CE MARKING, CONFLICT MINERALS, REACH, REACH, ROHS

GEI03C

IP67 RUBBER BRACELET PROBES WITH METAL CLAMP

PRODUCT FAMILY 30GB08

Probe with bracelet, PT100 sensor, TPE flat cable, 6x6x15 mm capsule. Suitable for temperature sensing in refrigeration and air conditioning applications, in air quality control applications and in the food field.



TECHNICAL DATA

TEMPERATURE RANGE	(-50 +120)°C
MODEL	Bracelet
SENSOR	PT100
CAPSULE	6x6x15 mm
CABLE	TPE flat
TERMINITIONS	Tin-plated, tips, connectors (other terminations available on request)
RESPONSE TIME	10 s in non-static liquid at 63.2% (depends on configuration)
IDENTIFICATION	Laser on cable, label (customizable)
DECLARATIONS OF CONFORMITY	CE MARKING, CONFLICT MINERALS, REACH, REACH, ROHS

GEK00C

IP67 RUBBER PROBES

Ø5X20 MM RUBBER CAPSULE

PRODUCT FAMILY 30GC11

IP67 probe with PT100 sensor, TPE flat cable, diameter 5x20 mm capsule. Suitable for temperature sensing in refrigeration and air conditioning applications, in air quality control applications and in the food field.



TECHNICAL DATA

TEMPERATURE RANGE	(-50 +120)°C
MODEL	IP67
SENSOR	PT100
CAPSULE	Diameter 5x20 mm
CABLE	TPE flat
TERMINITIONS	Tin-plated, tips, connectors (other terminations available on request)
RESPONSE TIME	10 s in non-static liquid at 63.2% (depends on configuration)
IDENTIFICATION	Laser on cable, label (customizable)
DECLARATIONS OF CONFORMITY	CE MARKING, CONFLICT MINERALS, REACH, REACH, ROHS

GGB07C

PROBES WITH STANDARD METAL CAPSULE

PRODUCT FAMILY 15CA05

Probe with steel capsule, PT100 sensor, in silicone cable, diameter 6x40 mm capsule. Suitable for temperature sensing in heating applications and in the food field.



TECHNICAL DATA

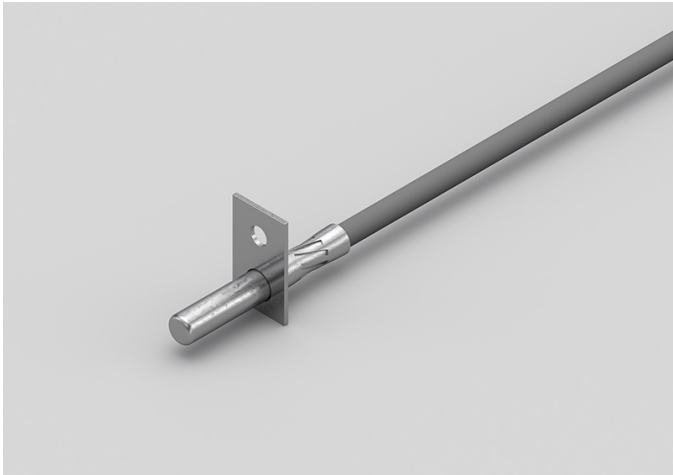
TEMPERATURE RANGE	(-50 +200)°C
MODEL	Steel capsule
SENSOR	PT100
CAPSULE	Diameter 6x40 mm
CABLE	Silicone
TERMINITIONS	Tin-plated, tips, connectors (other terminations available on request)
RESPONSE TIME	10 s in non-static liquid at 63.2% (depends on configuration)
IDENTIFICATION	Laser on cable, label (customizable)
DECLARATIONS OF CONFORMITY	CE MARKING, CONFLICT MINERALS, REACH, REACH, ROHS

GGB08C

METAL CAPSULE PROBES WITH FLANGE

PRODUCT FAMILY 15CA25

Contact probe with PT100 sensor, in silicone cable, diameter 6x40 mm capsule. Suitable for temperature sensing in heating applications and in the food field.



TECHNICAL DATA

TEMPERATURE RANGE	(-50 +200)°C
MODEL	Contact
SENSOR	PT100
CAPSULE	Diameter 6x40 mm
CABLE	Silicone
TERMINITIONS	Tin-plated, tips, connectors (other terminations available on request)
RESPONSE TIME	10 s in non-static liquid at 63.2% (depends on configuration)
IDENTIFICATION	Laser on cable, label (customizable)
DECLARATIONS OF CONFORMITY	CE MARKING, CONFLICT MINERALS, REACH, REACH, ROHS

GGB09C

STANDARD EYELET PROBES

PRODUCT FAMILY 15C005

Contact probe with PT100 sensor, in silicone cable, diameter 6x40 mm capsule. Suitable for temperature sensing in heating applications and in the food field.



TECHNICAL DATA

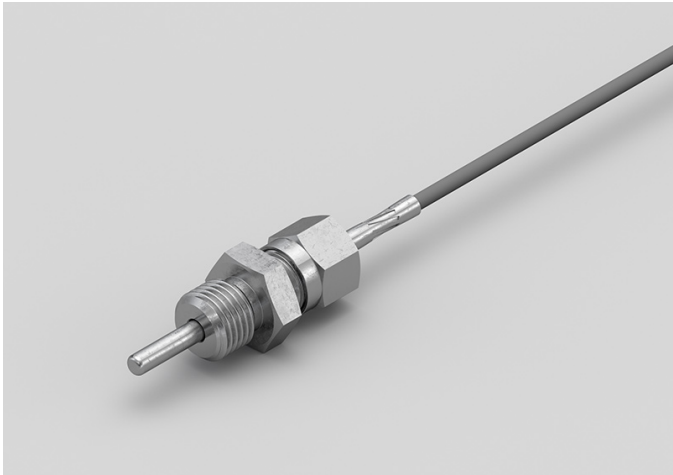
TEMPERATURE RANGE	(-50 +200)°C
MODEL	Contact
SENSOR	PT100
CAPSULE	Diameter 6x40 mm
CABLE	Silicone
TERMINITIONS	Tin-plated, tips, connectors (other terminations available on request)
RESPONSE TIME	10 s in non-static liquid at 63.2% (depends on configuration)
IDENTIFICATION	Laser on cable, label (customizable)
DECLARATIONS OF CONFORMITY	CE MARKING, CONFLICT MINERALS, REACH, REACH, ROHS

GGM08C

PROBES WITH SLIDING
THREADED CONNECTION

PRODUCT FAMILY 15CR10

Probe with connector, PT100 sensor, in silicone cable, diameter 4x40 mm capsule. Suitable for temperature sensing in heating applications and in the food field.



TECHNICAL DATA

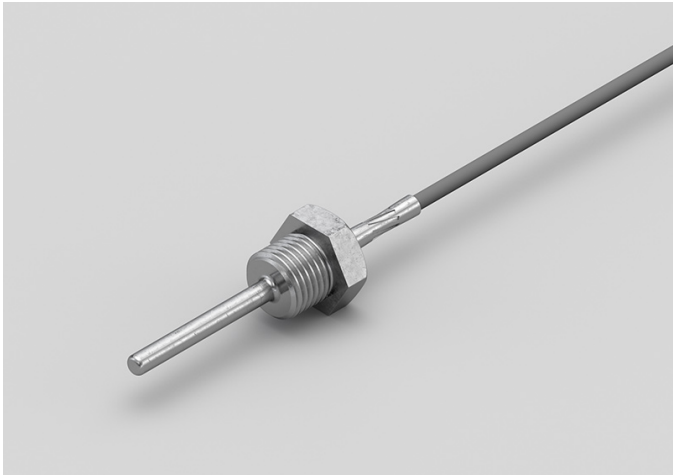
TEMPERATURE RANGE	(-50 +200)°C
MODEL	With connector
SENSOR	PT100
CAPSULE	Diameter 4x40 mm
CABLE	Silicone
TERMINITIONS	Tin-plated, tips, connectors (other terminations available on request)
RESPONSE TIME	10 s in non-static liquid at 63.2% (depends on configuration)
IDENTIFICATION	Laser on cable, label (customizable)
DECLARATIONS OF CONFORMITY	CE MARKING, CONFLICT MINERALS, REACH, REACH, ROHS

GGM09C

PROBES WITH WELDED THREADED CONNECTION

PRODUCT FAMILY 15CR05

Probe with connector, PT100 sensor, in silicone cable, diameter 4x40 mm capsule. Suitable for temperature sensing in laboratory equipment and machinery, in refrigeration and air conditioning applications, in air quality control applications, in heating applications, in the field of renewable energy, in the food field and in the industrial field.



TECHNICAL DATA

TEMPERATURE RANGE	(-50 +200)°C
MODEL	With connector
SENSOR	PT100
CAPSULE	Diameter 4x40 mm
CABLE	Silicone
TERMINITIONS	Tin-plated, tips, connectors (other terminations available on request)
RESPONSE TIME	10 s in non-static liquid at 63.2% (depends on configuration)
IDENTIFICATION	Laser on cable, label (customizable)
DECLARATIONS OF CONFORMITY	CE MARKING, CONFLICT MINERALS, REACH, REACH, ROHS

GG002C

STANDARD EYELET PROBES

PRODUCT FAMILY 15C005

Contact probe with PT100 sensor, in silicone cable, diameter 4x40 mm capsule. Suitable for temperature sensing in refrigeration and air conditioning applications, in air quality control applications, in heating applications, in the field of renewable energy and in the food field.



TECHNICAL DATA

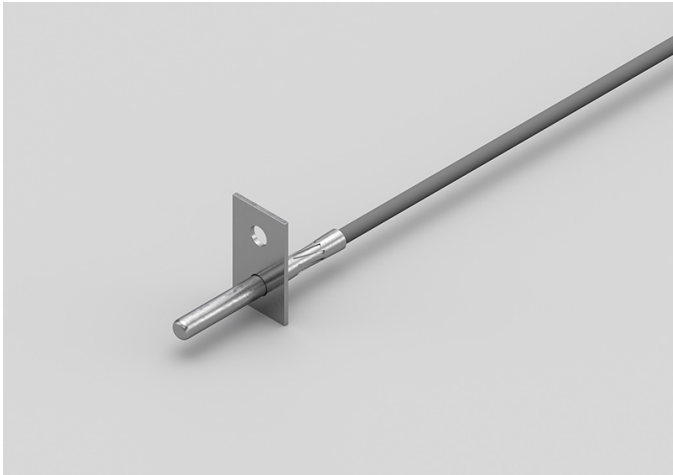
TEMPERATURE RANGE	(-50 +200)°C
MODEL	Contact
SENSOR	PT100
CAPSULE	Diameter 4x40 mm
CABLE	Silicone
TERMINITIONS	Tin-plated, tips, connectors (other terminations available on request)
RESPONSE TIME	10 s in non-static liquid at 63.2% (depends on configuration)
IDENTIFICATION	Laser on cable, label (customizable)
DECLARATIONS OF CONFORMITY	CE MARKING, CONFLICT MINERALS, REACH, REACH, ROHS

GG003C

METAL CAPSULE PROBES WITH FLANGE

PRODUCT FAMILY 15CA25

Contact probe with PT100 sensor, in silicone cable, diameter 4x40 mm capsule. Suitable for temperature sensing in refrigeration and air conditioning applications, in air quality control applications, in heating applications, in the field of renewable energy and in the food field.



TECHNICAL DATA

TEMPERATURE RANGE	(-50 +200)°C
MODEL	Contact
SENSOR	PT100
CAPSULE	Diameter 4x40 mm
CABLE	Silicone
TERMINITIONS	Tin-plated, tips, connectors (other terminations available on request)
RESPONSE TIME	10 s in non-static liquid at 63.2% (depends on configuration)
IDENTIFICATION	Laser on cable, label (customizable)
DECLARATIONS OF CONFORMITY	CE MARKING, CONFLICT MINERALS, REACH, REACH, ROHS

GGR07C

PROBES WITH TAPERED METAL CAPSULE

PRODUCT FAMILY 15CA20

Probe with steel capsule, PT100 sensor, in silicone cable, diameter 3X15 mm + diameter 6X40 mm capsule. Suitable for temperature sensing in laboratory equipment and machinery, in refrigeration and air conditioning applications, in air quality control applications, in heating applications and in the food field.



TECHNICAL DATA

TEMPERATURE RANGE	(-50 +200)°C
MODEL	Steel capsule
SENSOR	PT100
CAPSULE	Diameter 3X15 mm + Diameter 6X40 mm
CABLE	Silicone
TERMINITIONS	Tin-plated, tips, connectors (other terminations available on request)
RESPONSE TIME	10 s in non-static liquid at 63.2% (depends on configuration)
IDENTIFICATION	Laser on cable, label (customizable)
DECLARATIONS OF CONFORMITY	CE MARKING, CONFLICT MINERALS, REACH, REACH, ROHS

GGU02C

PROBES WITH FAST METAL CAPSULE

PRODUCT FAMILY 15CA10

Probe with steel capsule, PT100 sensor, in silicone cable, diameter 4x40 mm capsule. Suitable for temperature sensing in laboratory equipment and machinery, in refrigeration and air conditioning applications, in air quality control applications, in heating applications, in the field of renewable energy and in the food field.



TECHNICAL DATA

TEMPERATURE RANGE	(-50 +200)°C
MODEL	Steel capsule
SENSOR	PT100
CAPSULE	Diameter 4x40 mm
CABLE	Silicone
TERMINITIONS	Tin-plated, tips, connectors (other terminations available on request)
RESPONSE TIME	10 s in non-static liquid at 63.2% (depends on configuration)
IDENTIFICATION	Laser on cable, label (customizable)
DECLARATIONS OF CONFORMITY	CE MARKING, CONFLICT MINERALS, MOCA, REACH, REACH, ROHS

GTB00C

PROBES WITH STANDARD METAL CAPSULE

PRODUCT FAMILY 15CA05

Probe with steel capsule, PT100 sensor, in Teflon cable, diameter 6x40 mm capsule. Suitable for temperature sensing in laboratory equipment and machinery, in refrigeration and air conditioning applications, in air quality control applications, in heating applications, in the food field and in the industrial field.



TECHNICAL DATA

TEMPERATURE RANGE	(-50 +250)°C
MODEL	Steel capsule
SENSOR	PT100
CAPSULE	Diameter 6x40 mm
CABLE	Teflon
TERMINITIONS	Tin-plated, tips, connectors (other terminations available on request)
RESPONSE TIME	10 s in non-static liquid at 63.2% (depends on configuration)
IDENTIFICATION	Laser on cable, label (customizable)
DECLARATIONS OF CONFORMITY	CE MARKING, CONFLICT MINERALS, MOCA, REACH, REACH, ROHS

GTM06C

PROBES WITH SLIDING THREADED CONNECTION

PRODUCT FAMILY 15CR10

Probe with connector, PT100 sensor, in Teflon cable, diameter 4x40 mm capsule. Suitable for temperature sensing in laboratory equipment and machinery, in refrigeration and air conditioning applications, in air quality control applications, in heating applications, in the field of renewable energy, in the food field and in the industrial field.



TECHNICAL DATA

TEMPERATURE RANGE	(-50 +250)°C
MODEL	With connector
SENSOR	PT100
CAPSULE	Diameter 4x40 mm
CABLE	Teflon
TERMINITIONS	Tin-plated, tips, connectors (other terminations available on request)
RESPONSE TIME	10 s in non-static liquid at 63.2% (depends on configuration)
IDENTIFICATION	Laser on cable, label (customizable)
DECLARATIONS OF CONFORMITY	CE MARKING, CONFLICT MINERALS, REACH, REACH, ROHS

GTM07C

PROBES WITH WELDED
THREADED CONNECTION

PRODUCT FAMILY 15CR05

Probe with connector, PT100 sensor, in Teflon cable, diameter 4x40 mm capsule. Suitable for temperature sensing in laboratory equipment and machinery, in refrigeration and air conditioning applications, in air quality control applications, in heating applications, in the field of renewable energy, in the food field and in the industrial field.



TECHNICAL DATA

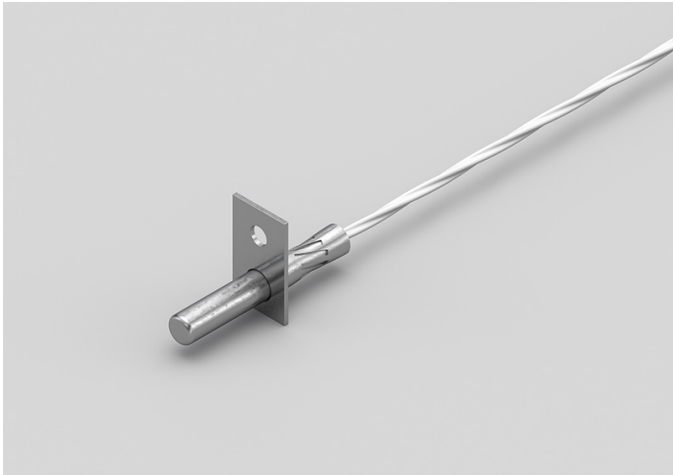
TEMPERATURE RANGE	(-50 +250)°C
MODEL	With connector
SENSOR	PT100
CAPSULE	Diameter 4x40 mm
CABLE	Teflon
TERMINITIONS	Tin-plated, tips, connectors (other terminations available on request)
RESPONSE TIME	10 s in non-static liquid at 63.2% (depends on configuration)
IDENTIFICATION	Laser on cable, label (customizable)
DECLARATIONS OF CONFORMITY	CE MARKING, CONFLICT MINERALS, REACH, REACH, ROHS

GTO00C

METAL CAPSULE PROBES WITH FLANGE

PRODUCT FAMILY 15CA25

Contact probe with PT100 sensor, in Teflon cable, diameter 6x40 mm capsule. Suitable for temperature sensing in refrigeration and air conditioning applications, in air quality control applications, in heating applications, in the food field and in the industrial field.



TECHNICAL DATA

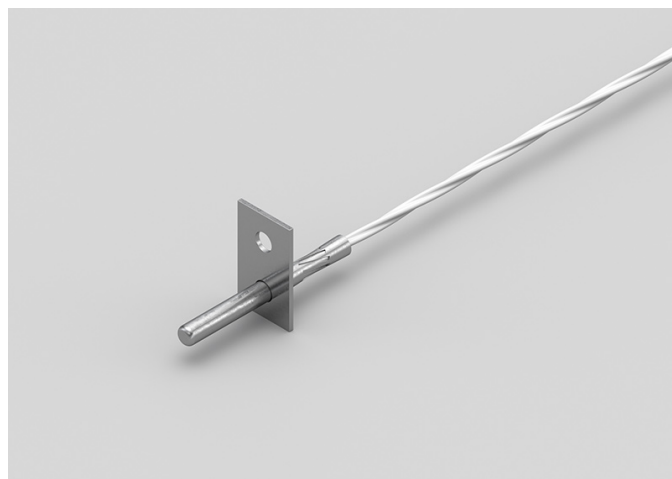
TEMPERATURE RANGE	(-50 +250)°C
MODEL	Contact
SENSOR	PT100
CAPSULE	Diameter 6x40 mm
CABLE	Teflon
TERMINITIONS	Tin-plated, tips, connectors (other terminations available on request)
RESPONSE TIME	10 s in non-static liquid at 63.2% (depends on configuration)
IDENTIFICATION	Laser on cable, label (customizable)
DECLARATIONS OF CONFORMITY	CE MARKING, CONFLICT MINERALS, REACH, REACH, ROHS

GT001C

METAL CAPSULE PROBES WITH FLANGE

PRODUCT FAMILY 15CA25

Contact probe with PT100 sensor, in Teflon cable, diameter 4x40 mm capsule. Suitable for temperature sensing in refrigeration and air conditioning applications, in air quality control applications, in heating applications, in the field of renewable energy, in the food field and in the industrial field.



TECHNICAL DATA

TEMPERATURE RANGE	(-50 +250)°C
MODEL	Contact
SENSOR	PT100
CAPSULE	Diameter 4x40 mm
CABLE	Teflon
TERMINITIONS	Tin-plated, tips, connectors (other terminations available on request)
RESPONSE TIME	10 s in non-static liquid at 63.2% (depends on configuration)
IDENTIFICATION	Laser on cable, label (customizable)
DECLARATIONS OF CONFORMITY	CE MARKING, CONFLICT MINERALS, REACH, REACH, ROHS

GT002C

STANDARD EYELET PROBES

PRODUCT FAMILY 15C005

Contact probe with PT100 sensor, in Teflon cable, diameter 6x40 mm capsule. Suitable for temperature sensing in refrigeration and air conditioning applications, in air quality control applications, in heating applications, in the food field and in the industrial field.



TECHNICAL DATA

TEMPERATURE RANGE	(-50 +250)°C
MODEL	Contact
SENSOR	PT100
CAPSULE	Diameter 6x40 mm
CABLE	Teflon
TERMINITIONS	Tin-plated, tips, connectors (other terminations available on request)
RESPONSE TIME	10 s in non-static liquid at 63.2% (depends on configuration)
IDENTIFICATION	Laser on cable, label (customizable)
DECLARATIONS OF CONFORMITY	CE MARKING, CONFLICT MINERALS, REACH, REACH, ROHS

GT003C

STANDARD EYELET PROBES

PRODUCT FAMILY 15C005

Contact probe with PT100 sensor, in Teflon cable, diameter 4x40 mm capsule. Suitable for temperature sensing in refrigeration and air conditioning applications, in air quality control applications, in heating applications, in the field of renewable energy, in the food field and in the industrial field.



TECHNICAL DATA

TEMPERATURE RANGE	(0 +250)°C
MODEL	Contact
SENSOR	PT100
CAPSULE	Diameter 4x40 mm
CABLE	Teflon
TERMINITIONS	Tin-plated, tips, connectors (other terminations available on request)
RESPONSE TIME	10 s in non-static liquid at 63.2% (depends on configuration)
IDENTIFICATION	Laser on cable, label (customizable)
DECLARATIONS OF CONFORMITY	CE MARKING, CONFLICT MINERALS, REACH, REACH, ROHS

GTR02C

PROBES WITH TAPERED METAL CAPSULE

PRODUCT FAMILY 15CA20

Probe with steel capsule, PT100 sensor, in Teflon cable, diameter 3X15 mm + diameter 6X40 mm capsule. Suitable for temperature sensing in refrigeration and air conditioning applications, in air quality control applications, in heating applications, in the food field and in the industrial field.



TECHNICAL DATA

TEMPERATURE RANGE	(-50 +250)°C
MODEL	Steel capsule
SENSOR	PT100
CAPSULE	Diameter 3X15 mm + Diameter 6X40 mm
CABLE	Teflon
TERMINITIONS	Tin-plated, tips, connectors (other terminations available on request)
RESPONSE TIME	10 s in non-static liquid at 63.2% (depends on configuration)
IDENTIFICATION	Laser on cable, label (customizable)
DECLARATIONS OF CONFORMITY	CE MARKING, CONFLICT MINERALS, REACH, REACH, ROHS

GTU01C

PROBES WITH FAST METAL CAPSULE

PRODUCT FAMILY 15CA10

Probe with steel capsule, PT100 sensor, in Teflon cable, diameter 4x40 mm capsule. Suitable for temperature sensing in laboratory equipment and machinery, in refrigeration and air conditioning applications, in air quality control applications, in heating applications, in the field of renewable energy, in the food field and in the industrial field.



TECHNICAL DATA

TEMPERATURE RANGE	(-50 +250)°C
MODEL	Steel capsule
SENSOR	PT100
CAPSULE	Diameter 4x40 mm
CABLE	Teflon
TERMINITIONS	Tin-plated, tips, connectors (other terminations available on request)
RESPONSE TIME	10 s in non-static liquid at 63.2% (depends on configuration)
IDENTIFICATION	Laser on cable, label (customizable)
DECLARATIONS OF CONFORMITY	CE MARKING, CONFLICT MINERALS, MOCA, REACH, REACH, ROHS

GVB03C

PROBES WITH STANDARD METAL CAPSULE

PRODUCT FAMILY 15CA05

Probe with steel capsule, PT100 sensor, in glass fibre cable, diameter 6x40 mm capsule. Suitable for temperature sensing in laboratory equipment and machinery, in refrigeration and air conditioning applications, in air quality control applications, in heating applications and in the food field.



TECHNICAL DATA

TEMPERATURE RANGE	(0 +350)°C
MODEL	Steel capsule
SENSOR	PT100
CAPSULE	Diameter 6x40 mm
CABLE	Glass fibre
TERMINITIONS	Tin-plated, tips, connectors (other terminations available on request)
RESPONSE TIME	10 s in non-static liquid at 63.2% (depends on configuration)
IDENTIFICATION	Laser on cable, label (customizable)
DECLARATIONS OF CONFORMITY	CE MARKING, CONFLICT MINERALS, MOCA, REACH, REACH, ROHS

GVM03C

PROBES WITH SLIDING THREADED CONNECTION

PRODUCT FAMILY 15CR10

Probe with connector, PT100 sensor, in glass fibre cable, diameter 4x40 mm capsule. Suitable for temperature sensing in laboratory equipment and machinery, in refrigeration and air conditioning applications, in air quality control applications, in heating applications, in the field of renewable energy, in the food field and in the industrial field.



TECHNICAL DATA

TEMPERATURE RANGE	(0 +250)°C
MODEL	With connector
SENSOR	PT100
CAPSULE	Diameter 4x40 mm
CABLE	Glass fibre
TERMINITIONS	Tin-plated, tips, connectors (other terminations available on request)
RESPONSE TIME	10 s in non-static liquid at 63.2% (depends on configuration)
IDENTIFICATION	Laser on cable, label (customizable)
DECLARATIONS OF CONFORMITY	CE MARKING, CONFLICT MINERALS, REACH, REACH, ROHS

GVM04C

PROBES WITH WELDED THREADED CONNECTION

PRODUCT FAMILY 15CR05

Probe with connector, PT100 sensor, in glass fibre cable, diameter 4x40 mm capsule. Suitable for temperature sensing in laboratory equipment and machinery, in refrigeration and air conditioning applications, in air quality control applications, in heating applications, in the field of renewable energy, in the food field and in the industrial field.



TECHNICAL DATA

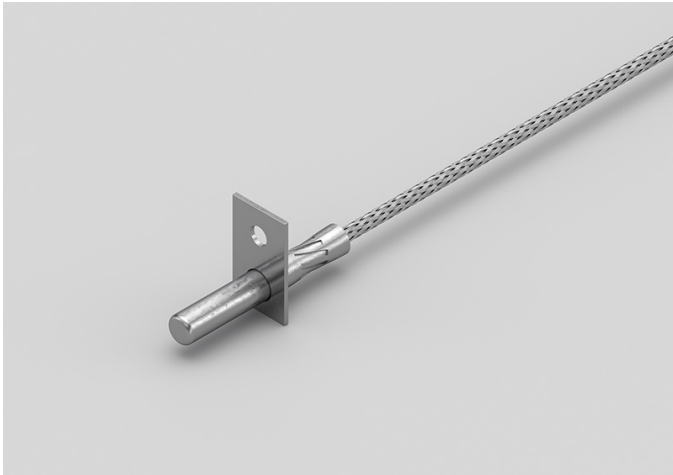
TEMPERATURE RANGE	(0 +250)°C
MODEL	With connector
SENSOR	PT100
CAPSULE	Diameter 4x40 mm
CABLE	Glass fibre
TERMINITIONS	Tin-plated, tips, connectors (other terminations available on request)
RESPONSE TIME	10 s in non-static liquid at 63.2% (depends on configuration)
IDENTIFICATION	Laser on cable, label (customizable)
DECLARATIONS OF CONFORMITY	CE MARKING, CONFLICT MINERALS, REACH, REACH, ROHS

GVO01C

METAL CAPSULE PROBES WITH FLANGE

PRODUCT FAMILY 15CA25

Contact probe with PT100 sensor, in glass fibre cable, diameter 6x40 mm capsule. Suitable for temperature sensing in refrigeration and air conditioning applications, in air quality control applications, in heating applications and in the food field.



TECHNICAL DATA

TEMPERATURE RANGE	(0 +350)°C
MODEL	Contact
SENSOR	PT100
CAPSULE	Diameter 6x40 mm
CABLE	Glass fibre
TERMINITIONS	Tin-plated, tips, connectors (other terminations available on request)
RESPONSE TIME	10 s in non-static liquid at 63.2% (depends on configuration)
IDENTIFICATION	Laser on cable, label (customizable)
DECLARATIONS OF CONFORMITY	CE MARKING, CONFLICT MINERALS, REACH, REACH, ROHS

GVO02C

METAL CAPSULE PROBES WITH FLANGE

PRODUCT FAMILY 15CA25

Contact probe with PT100 sensor, in glass fibre cable, diameter 4x40 mm capsule. Suitable for temperature sensing in refrigeration and air conditioning applications, in air quality control applications and in the food field.



TECHNICAL DATA

TEMPERATURE RANGE	(0 +350)°C
MODEL	Contact
SENSOR	PT100
CAPSULE	Diameter 4x40 mm
CABLE	Glass fibre
TERMINITIONS	Tin-plated, tips, connectors (other terminations available on request)
RESPONSE TIME	10 s in non-static liquid at 63.2% (depends on configuration)
IDENTIFICATION	Laser on cable, label (customizable)
DECLARATIONS OF CONFORMITY	CE MARKING, CONFLICT MINERALS, REACH, REACH, ROHS

GVO03C

STANDARD EYELET PROBES

PRODUCT FAMILY 15C005

Contact probe with PT100 sensor, in glass fibre cable, diameter 6x40 mm capsule. Suitable for temperature sensing in refrigeration and air conditioning applications, in air quality control applications and in the food field.



TECHNICAL DATA

TEMPERATURE RANGE	(0 +350)°C
MODEL	Contact
SENSOR	PT100
CAPSULE	Diameter 6x40 mm
CABLE	Glass fibre
TERMINITIONS	Tin-plated, tips, connectors (other terminations available on request)
RESPONSE TIME	10 s in non-static liquid at 63.2% (depends on configuration)
IDENTIFICATION	Laser on cable, label (customizable)
DECLARATIONS OF CONFORMITY	CE MARKING, CONFLICT MINERALS, REACH, REACH, ROHS

GVO04C

STANDARD EYELET PROBES

PRODUCT FAMILY 15C005

Contact probe with PT100 sensor, in glass fibre cable, diameter 4x40 mm capsule. Suitable for temperature sensing in refrigeration and air conditioning applications, in air quality control applications, in heating applications and in the food field.



TECHNICAL DATA

TEMPERATURE RANGE	(0 +350)°C
MODEL	Contact
SENSOR	PT100
CAPSULE	Diameter 4x40 mm
CABLE	Glass fibre
TERMINITIONS	Tin-plated, tips, connectors (other terminations available on request)
RESPONSE TIME	10 s in non-static liquid at 63.2% (depends on configuration)
IDENTIFICATION	Laser on cable, label (customizable)
DECLARATIONS OF CONFORMITY	CE MARKING, CONFLICT MINERALS, REACH, REACH, ROHS

GVR07C

PROBES WITH TAPERED METAL CAPSULE

PRODUCT FAMILY 15CA20

Probe with steel capsule, PT100 sensor, in glass fibre cable, diameter 3X15 mm + diameter 6X40 mm capsule. Suitable for temperature sensing in laboratory equipment and machinery, in refrigeration and air conditioning applications, in air quality control applications, in heating applications and in the food field.



TECHNICAL DATA

TEMPERATURE RANGE	(0 +350)°C
MODEL	Steel capsule
SENSOR	PT100
CAPSULE	Diameter 3X15 mm + Diameter 6X40 mm
CABLE	Glass fibre
TERMINITIONS	Tin-plated, tips, connectors (other terminations available on request)
RESPONSE TIME	10 s in non-static liquid at 63.2% (depends on configuration)
IDENTIFICATION	Laser on cable, label (customizable)
DECLARATIONS OF CONFORMITY	CE MARKING, CONFLICT MINERALS, REACH, REACH, ROHS

GVU07C

PROBES WITH FAST METAL CAPSULE

PRODUCT FAMILY 15CA10

Probe with steel capsule, PT100 sensor, in glass fibre cable, diameter 4x40 mm capsule. Suitable for temperature sensing in laboratory equipment and machinery, in refrigeration and air conditioning applications, in air quality control applications, in heating applications, in the field of renewable energy and in the food field.



TECHNICAL DATA

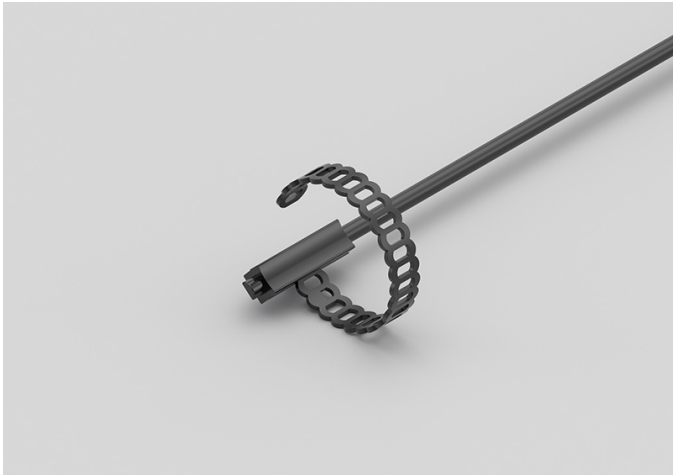
TEMPERATURE RANGE	(0 +350)°C
MODEL	Steel capsule
SENSOR	PT100
CAPSULE	Diameter 4x40 mm
CABLE	Glass fibre
TERMINITIONS	Tin-plated, tips, connectors (other terminations available on request)
RESPONSE TIME	10 s in non-static liquid at 63.2% (depends on configuration)
IDENTIFICATION	Laser on cable, label (customizable)
DECLARATIONS OF CONFORMITY	CE MARKING, CONFLICT MINERALS, MOCA, REACH, REACH, ROHS

IDI01C

IP68 RUBBER BRACELET PROBES

PRODUCT FAMILY 30GB05

Probe with bracelet, PT1000 sensor, TPE round cable, 6x6x15 mm capsule. Suitable for temperature sensing in air quality control applications.



TECHNICAL DATA

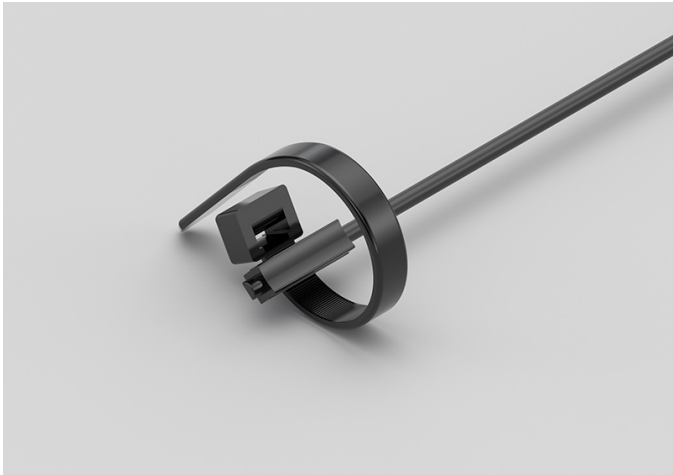
TEMPERATURE RANGE	(-50 +110)°C
MODEL	Bracelet
SENSOR	PT1000
CAPSULE	6x6x15 mm
CABLE	TPE round
TERMINITIONS	Tin-plated, tips, connectors (other terminations available on request)
RESPONSE TIME	10 s in non-static liquid at 63.2% (depends on configuration)
IDENTIFICATION	Laser on cable, label (customizable)
DECLARATIONS OF CONFORMITY	CE MARKING, CONFLICT MINERALS, REACH, REACH, ROHS

IDI02C

IP68 RUBBER BRACELET
PROBE WITH METAL
CLAMP

PRODUCT FAMILY 30GB06

Probe with bracelet, PT1000 sensor, TPE round cable, 6x6x15 mm capsule. Suitable for temperature sensing in air quality control applications.



TECHNICAL DATA

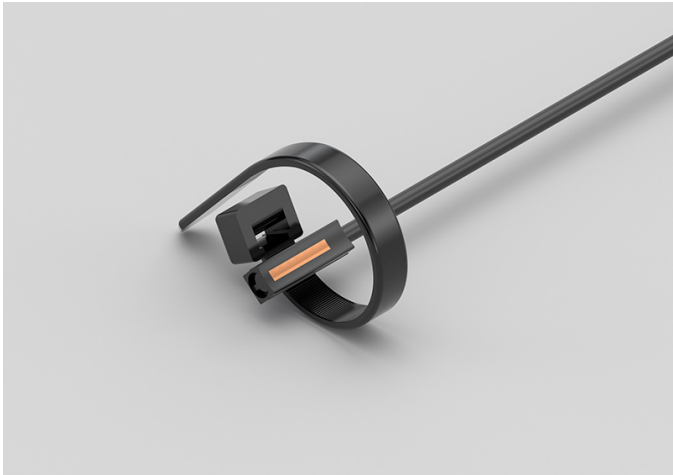
TEMPERATURE RANGE	(-50 +110)°C
MODEL	Bracelet
SENSOR	PT1000
CAPSULE	6x6x15 mm
CABLE	TPE round
TERMINITIONS	Tin-plated, tips, connectors (other terminations available on request)
RESPONSE TIME	10 s in non-static liquid at 63.2% (depends on configuration)
IDENTIFICATION	Laser on cable, label (customizable)
DECLARATIONS OF CONFORMITY	CE MARKING, CONFLICT MINERALS, REACH, REACH, ROHS

IDI03C

IP67 COPPER CAPSULE
BRACELET PROBES WITH
METAL CLAMP

PRODUCT FAMILY 30GB11

Probe with bracelet, PT1000 sensor, TPE round cable, 6x6x15 mm + copper capsule. Suitable for temperature sensing in air quality control applications.



TECHNICAL DATA

TEMPERATURE RANGE	(-50 +110)°C
MODEL	Bracelet
SENSOR	PT1000
CAPSULE	6x6x15 mm + copper
CABLE	TPE round
TERMINITIONS	Tin-plated, tips, connectors (other terminations available on request)
RESPONSE TIME	10 s in non-static liquid at 63.2% (depends on configuration)
IDENTIFICATION	Laser on cable, label (customizable)
DECLARATIONS OF CONFORMITY	CE MARKING, CONFLICT MINERALS, REACH, REACH, ROHS

IEE00C

IP67 RUBBER PROBES

6X6X15 MM RUBBER CAPSULE

PRODUCT FAMILY 30GC10

IP67 probe with PT1000 sensor, TPE flat cable, 1,5x5x6 mm capsule. Suitable for temperature sensing in heating applications, in the field of renewable energy and in the food field.



TECHNICAL DATA

TEMPERATURE RANGE	(-50 +120)°C
MODEL	IP67
SENSOR	PT1000
CAPSULE	1,5x5x6 mm
CABLE	TPE flat
TERMINITIONS	Tin-plated, tips, connectors (other terminations available on request)
RESPONSE TIME	10 s in non-static liquid at 63.2% (depends on configuration)
IDENTIFICATION	Laser on cable, label (customizable)
DECLARATIONS OF CONFORMITY	CE MARKING, CONFLICT MINERALS, REACH, REACH, ROHS

IEH00C

IP67 RUBBER PROBES Ø6X20 MM STEEL CAPSULE

PRODUCT FAMILY 30GC12

IP67 probe with PT1000 sensor, TPE flat cable, diameter 6x20 mm capsule. Suitable for temperature sensing in heating applications, in the field of renewable energy and in the food field.



TECHNICAL DATA

TEMPERATURE RANGE	(-50 +120)°C
MODEL	IP67
SENSOR	PT1000
CAPSULE	Diameter 6x20 mm
CABLE	TPE flat
TERMINITIONS	Tin-plated, tips, connectors (other terminations available on request)
RESPONSE TIME	10 s in non-static liquid at 63.2% (depends on configuration)
IDENTIFICATION	Laser on cable, label (customizable)
DECLARATIONS OF CONFORMITY	CE MARKING, CONFLICT MINERALS, REACH, REACH, ROHS

IEH01C

IP67 RUBBER PROBES Ø6X40..50/60 MM STEEL CAPSULE

PRODUCT FAMILY 30GC13

IP67 probe with PT1000 sensor, TPE flat cable, diameter 6x50 mm capsule. Suitable for temperature sensing in heating applications, in the field of renewable energy and in the food field.



TECHNICAL DATA

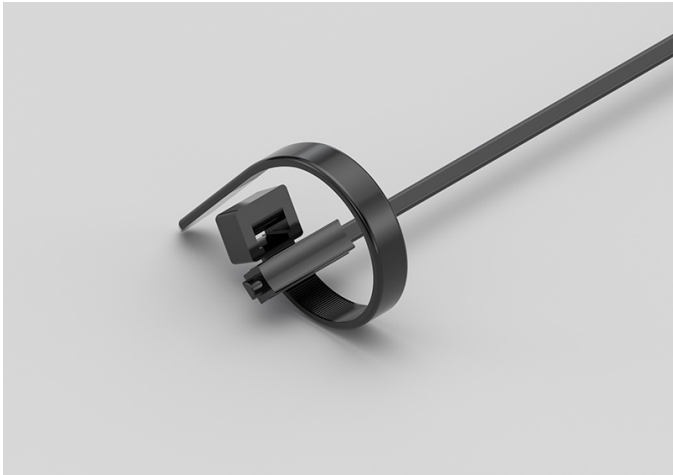
TEMPERATURE RANGE	(-50 +120)°C
MODEL	IP67
SENSOR	PT1000
CAPSULE	Diameter 6x50 mm
CABLE	TPE flat
TERMINITIONS	Tin-plated, tips, connectors (other terminations available on request)
RESPONSE TIME	10 s in non-static liquid at 63.2% (depends on configuration)
IDENTIFICATION	Laser on cable, label (customizable)
DECLARATIONS OF CONFORMITY	CE MARKING, CONFLICT MINERALS, REACH, REACH, ROHS

IEI05C

IP67 RUBBER BRACELET PROBES WITH METAL CLAMP

PRODUCT FAMILY 30GB08

Probe with bracelet, PT1000 sensor, TPE flat cable, 6x6x15 mm capsule. Suitable for temperature sensing in heating applications, in the field of renewable energy and in the food field.



TECHNICAL DATA

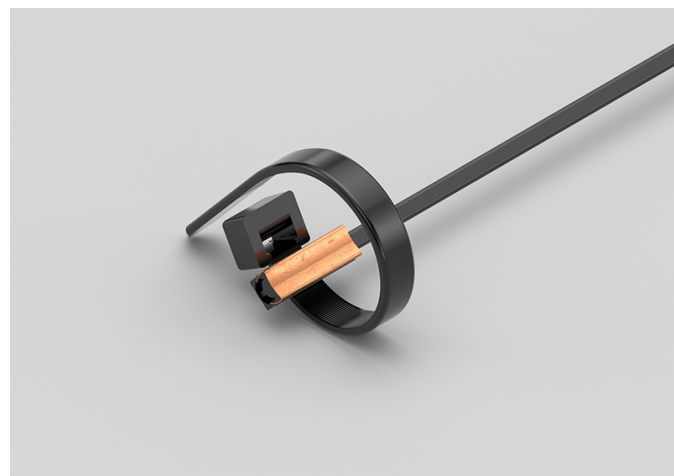
TEMPERATURE RANGE	(-50 +120)°C
MODEL	Bracelet
SENSOR	PT1000
CAPSULE	6x6x15 mm
CABLE	TPE flat
TERMINITIONS	Tin-plated, tips, connectors (other terminations available on request)
RESPONSE TIME	10 s in non-static liquid at 63.2% (depends on configuration)
IDENTIFICATION	Laser on cable, label (customizable)
DECLARATIONS OF CONFORMITY	CE MARKING, CONFLICT MINERALS, REACH, REACH, ROHS

IEI06C

IP55 COPPER PLATE BRACELET PROBES WITH METAL CLAMP

PRODUCT FAMILY 30GB16

Probe with bracelet, PT1000 sensor, TPE flat cable, 6x6x15 mm + copper plate capsule. Suitable for temperature sensing in heating applications, in the field of renewable energy and in the food field.



TECHNICAL DATA

TEMPERATURE RANGE	(-50 +120)°C
MODEL	Bracelet
SENSOR	PT1000
CAPSULE	6x6x15 mm + copper plate
CABLE	TPE flat
TERMINITIONS	Tin-plated, tips, connectors (other terminations available on request)
RESPONSE TIME	10 s in non-static liquid at 63.2% (depends on configuration)
IDENTIFICATION	Laser on cable, label (customizable)
DECLARATIONS OF CONFORMITY	CE MARKING, CONFLICT MINERALS, REACH, REACH, ROHS

IEK00C

IP67 RUBBER PROBES

Ø5X20 MM RUBBER CAPSULE

PRODUCT FAMILY 30GC11

IP67 probe with PT1000 sensor, TPE flat cable, diameter 5x20 mm capsule. Suitable for temperature sensing in refrigeration and air conditioning applications, in heating applications, in the field of renewable energy, in the food field and in the industrial field.



TECHNICAL DATA

TEMPERATURE RANGE	(-50 +120)°C
MODEL	IP67
SENSOR	PT1000
CAPSULE	Diameter 5x20 mm
CABLE	TPE flat
TERMINITIONS	Tin-plated, tips, connectors (other terminations available on request)
RESPONSE TIME	10 s in non-static liquid at 63.2% (depends on configuration)
IDENTIFICATION	Laser on cable, label (customizable)
DECLARATIONS OF CONFORMITY	CE MARKING, CONFLICT MINERALS, REACH, REACH, ROHS

IGB01C

PROBES WITH STANDARD METAL CAPSULE

PRODUCT FAMILY 15CA05

Probe with steel capsule, PT1000 sensor, in silicone cable, diameter 6x40 mm capsule. Suitable for temperature sensing in refrigeration and air conditioning applications, in heating applications, in the field of renewable energy, in the food field and in the industrial field.



TECHNICAL DATA

TEMPERATURE RANGE	(-50 +200)°C
MODEL	Steel capsule
SENSOR	PT1000
CAPSULE	Diameter 6x40 mm
CABLE	Silicone
TERMINITIONS	Tin-plated, tips, connectors (other terminations available on request)
RESPONSE TIME	10 s in non-static liquid at 63.2% (depends on configuration)
IDENTIFICATION	Laser on cable, label (customizable)
DECLARATIONS OF CONFORMITY	CE MARKING, CONFLICT MINERALS, MOCA, REACH, REACH, ROHS

IGM06C

PROBES WITH SLIDING
THREADED CONNECTION

PRODUCT FAMILY 15CR10

Probe with connector, PT1000 sensor, in silicone cable, diameter 4x40 mm capsule. Suitable for temperature sensing in heating applications, in the field of renewable energy and in the food field.



TECHNICAL DATA

TEMPERATURE RANGE	(-50 +200)°C
MODEL	With connector
SENSOR	PT1000
CAPSULE	Diameter 4x40 mm
CABLE	Silicone
TERMINITIONS	Tin-plated, tips, connectors (other terminations available on request)
RESPONSE TIME	10 s in non-static liquid at 63.2% (depends on configuration)
IDENTIFICATION	Laser on cable, label (customizable)
DECLARATIONS OF CONFORMITY	CE MARKING, CONFLICT MINERALS, REACH, REACH, ROHS

IGM07C

STANDARD EYELET PROBES

PRODUCT FAMILY 15C005

Contact probe with PT1000 sensor, in silicone cable, diameter 4x40 mm capsule. Suitable for temperature sensing in refrigeration and air conditioning applications, in air quality control applications and in the food field.



TECHNICAL DATA

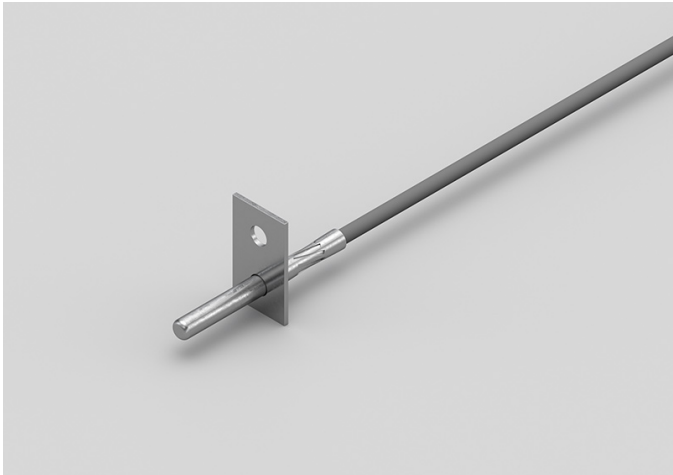
TEMPERATURE RANGE	(-50 +200)°C
MODEL	Contact
SENSOR	PT1000
CAPSULE	Diameter 4x40 mm
CABLE	Silicone
TERMINITIONS	Tin-plated, tips, connectors (other terminations available on request)
RESPONSE TIME	10 s in non-static liquid at 63.2% (depends on configuration)
IDENTIFICATION	Laser on cable, label (customizable)
DECLARATIONS OF CONFORMITY	CE MARKING, CONFLICT MINERALS, REACH, REACH, ROHS

IG004C

METAL CAPSULE PROBES WITH FLANGE

PRODUCT FAMILY 15CA25

Contact probe with PT1000 sensor, in silicone cable, diameter 4x40 mm capsule. Suitable for temperature sensing in heating applications and in the food field.



TECHNICAL DATA

TEMPERATURE RANGE	(-50 +200)°C
MODEL	Contact
SENSOR	PT1000
CAPSULE	Diameter 4x40 mm
CABLE	Silicone
TERMINITIONS	Tin-plated, tips, connectors (other terminations available on request)
RESPONSE TIME	10 s in non-static liquid at 63.2% (depends on configuration)
IDENTIFICATION	Laser on cable, label (customizable)
DECLARATIONS OF CONFORMITY	CE MARKING, CONFLICT MINERALS, REACH, REACH, ROHS

IG005C

STANDARD EYELET PROBES

PRODUCT FAMILY 15C005

Contact probe with PT1000 sensor, in silicone cable, diameter 4x40 mm capsule. Suitable for temperature sensing in heating applications and in the food field.



TECHNICAL DATA

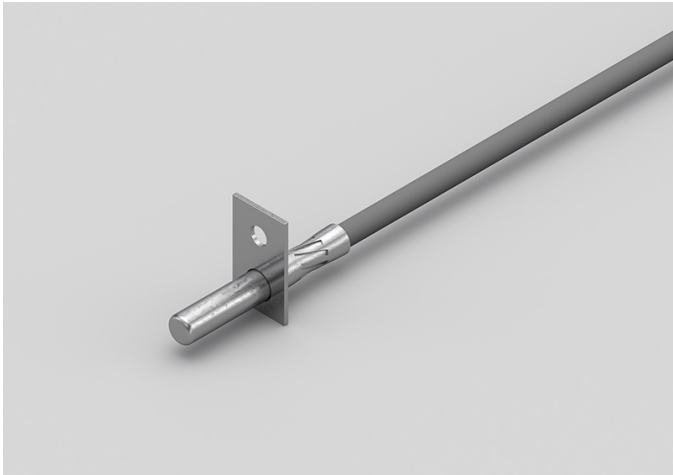
TEMPERATURE RANGE	(-50 +200)°C
MODEL	Contact
SENSOR	PT1000
CAPSULE	Diameter 4x40 mm
CABLE	Silicone
TERMINITIONS	Tin-plated, tips, connectors (other terminations available on request)
RESPONSE TIME	10 s in non-static liquid at 63.2% (depends on configuration)
IDENTIFICATION	Laser on cable, label (customizable)
DECLARATIONS OF CONFORMITY	CE MARKING, CONFLICT MINERALS, REACH, REACH, ROHS

IG006C

METAL CAPSULE PROBES
WITH FLANGE

PRODUCT FAMILY 15CA25

Contact probe with PT1000 sensor, in silicone cable, diameter 6x40 mm capsule. Suitable for temperature sensing in heating applications and in the food field.



TECHNICAL DATA

TEMPERATURE RANGE	(-50 +200)°C
MODEL	Contact
SENSOR	PT1000
CAPSULE	Diameter 6x40 mm
CABLE	Silicone
TERMINITIONS	Tin-plated, tips, connectors (other terminations available on request)
RESPONSE TIME	10 s in non-static liquid at 63.2% (depends on configuration)
IDENTIFICATION	Laser on cable, label (customizable)
DECLARATIONS OF CONFORMITY	CE MARKING, CONFLICT MINERALS, REACH, REACH, ROHS

IG007C

STANDARD EYELET PROBES

PRODUCT FAMILY 15C005

Contact probe with PT1000 sensor, in silicone cable, diameter 6x40 mm capsule. Suitable for temperature sensing in refrigeration and air conditioning applications, in heating applications, in the food field and in the industrial field.



TECHNICAL DATA

TEMPERATURE RANGE	(-50 +200)°C
MODEL	Contact
SENSOR	PT1000
CAPSULE	Diameter 6x40 mm
CABLE	Silicone
TERMINITIONS	Tin-plated, tips, connectors (other terminations available on request)
RESPONSE TIME	10 s in non-static liquid at 63.2% (depends on configuration)
IDENTIFICATION	Laser on cable, label (customizable)
DECLARATIONS OF CONFORMITY	CE MARKING, CONFLICT MINERALS, REACH, REACH, ROHS

IGR03C

PROBES WITH TAPERED METAL CAPSULE

PRODUCT FAMILY 15CA20

Probe with steel capsule, PT1000 sensor, in silicone cable, diameter 3X15 mm + diameter 6X40 mm capsule. Suitable for temperature sensing in refrigeration and air conditioning applications, in heating applications, in the food field and in the industrial field.



TECHNICAL DATA

TEMPERATURE RANGE	(-50 +200)°C
MODEL	Steel capsule
SENSOR	PT1000
CAPSULE	Diameter 3X15 mm + Diameter 6X40 mm
CABLE	Silicone
TERMINITIONS	Tin-plated, tips, connectors (other terminations available on request)
RESPONSE TIME	10 s in non-static liquid at 63.2% (depends on configuration)
IDENTIFICATION	Laser on cable, label (customizable)
DECLARATIONS OF CONFORMITY	CE MARKING, CONFLICT MINERALS, REACH, REACH, ROHS

IGU02C

PROBES WITH FAST METAL CAPSULE

PRODUCT FAMILY 15CA10

Probe with steel capsule, PT1000 sensor, in silicone cable, diameter 4x40 mm capsule. Suitable for temperature sensing in heating applications and in the food field.



TECHNICAL DATA

TEMPERATURE RANGE	(-50 +200)°C
MODEL	Steel capsule
SENSOR	PT1000
CAPSULE	Diameter 4x40 mm
CABLE	Silicone
TERMINITIONS	Tin-plated, tips, connectors (other terminations available on request)
RESPONSE TIME	10 s in non-static liquid at 63.2% (depends on configuration)
IDENTIFICATION	Laser on cable, label (customizable)
DECLARATIONS OF CONFORMITY	CE MARKING, CONFLICT MINERALS, MOCA, REACH, REACH, ROHS

ITB01C

PROBES WITH STANDARD METAL CAPSULE

PRODUCT FAMILY 15CA05

Probe with steel capsule, PT1000 sensor, in Teflon cable, diameter 6x40 mm capsule. Suitable for temperature sensing in laboratory equipment and machinery.



TECHNICAL DATA

TEMPERATURE RANGE	(-50 +250)°C
MODEL	Steel capsule
SENSOR	PT1000
CAPSULE	Diameter 6x40 mm
CABLE	Teflon
TERMINITIONS	Tin-plated, tips, connectors (other terminations available on request)
RESPONSE TIME	10 s in non-static liquid at 63.2% (depends on configuration)
IDENTIFICATION	Laser on cable, label (customizable)
DECLARATIONS OF CONFORMITY	CE MARKING, CONFLICT MINERALS, MOCA, REACH, REACH, ROHS

ITM01C

PROBES WITH SLIDING THREADED CONNECTION

PRODUCT FAMILY 15CR10

Probe with connector, PT1000 sensor, in Teflon cable, diameter 4x40 mm capsule. Suitable for temperature sensing in laboratory equipment and machinery, in heating applications and in the food field.



TECHNICAL DATA

TEMPERATURE RANGE	(-50 +250)°C
MODEL	With connector
SENSOR	PT1000
CAPSULE	Diameter 4x40 mm
CABLE	Teflon
TERMINATIONS	Tin-plated, tips, connectors (other terminations available on request)
RESPONSE TIME	10 s in non-static liquid at 63.2% (depends on configuration)
IDENTIFICATION	Laser on cable, label (customizable)
DECLARATIONS OF CONFORMITY	CE MARKING, CONFLICT MINERALS, REACH, REACH, ROHS

ITM02C

PROBES WITH WELDED
THREADED CONNECTION

PRODUCT FAMILY 15CR05

Probe with connector, PT1000 sensor, in Teflon cable, diameter 4x40 mm capsule. Suitable for temperature sensing in laboratory equipment and machinery, in heating applications and in the food field.



TECHNICAL DATA

TEMPERATURE RANGE	(-50 +250)°C
MODEL	With connector
SENSOR	PT1000
CAPSULE	Diameter 4x40 mm
CABLE	Teflon
TERMINITIONS	Tin-plated, tips, connectors (other terminations available on request)
RESPONSE TIME	10 s in non-static liquid at 63.2% (depends on configuration)
IDENTIFICATION	Laser on cable, label (customizable)
DECLARATIONS OF CONFORMITY	CE MARKING, CONFLICT MINERALS, REACH, REACH, ROHS

IT003C

STANDARD EYELET PROBES

PRODUCT FAMILY 15C005

Contact probe with PT1000 sensor, in Teflon cable, diameter 4x40 mm capsule. Suitable for temperature sensing in laboratory equipment and machinery, in refrigeration and air conditioning applications, in heating applications, in the food field and in the industrial field.



TECHNICAL DATA

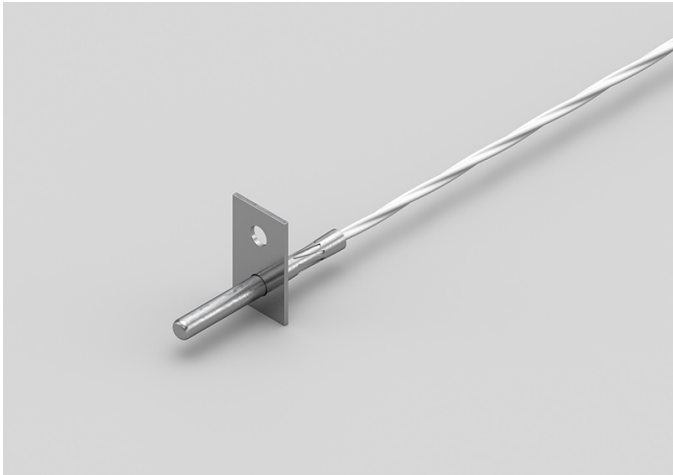
TEMPERATURE RANGE	(0 +250)°C
MODEL	Contact
SENSOR	PT1000
CAPSULE	Diameter 4x40 mm
CABLE	Teflon
TERMINITIONS	Tin-plated, tips, connectors (other terminations available on request)
RESPONSE TIME	10 s in non-static liquid at 63.2% (depends on configuration)
IDENTIFICATION	Laser on cable, label (customizable)
DECLARATIONS OF CONFORMITY	CE MARKING, CONFLICT MINERALS, REACH, REACH, ROHS

ITO04C

METAL CAPSULE PROBES WITH FLANGE

PRODUCT FAMILY 15CA25

Contact probe with PT1000 sensor, in Teflon cable, diameter 4x40 mm capsule. Suitable for temperature sensing in laboratory equipment and machinery, in heating applications and in the food field.



TECHNICAL DATA

TEMPERATURE RANGE	(-50 +250)°C
MODEL	Contact
SENSOR	PT1000
CAPSULE	Diameter 4x40 mm
CABLE	Teflon
TERMINITIONS	Tin-plated, tips, connectors (other terminations available on request)
RESPONSE TIME	10 s in non-static liquid at 63.2% (depends on configuration)
IDENTIFICATION	Laser on cable, label (customizable)
DECLARATIONS OF CONFORMITY	CE MARKING, CONFLICT MINERALS, REACH, REACH, ROHS

IT005C

METAL CAPSULE PROBES WITH FLANGE

PRODUCT FAMILY 15CA25

Contact probe with PT1000 sensor, in Teflon cable, diameter 6x40 mm capsule. Suitable for temperature sensing in laboratory equipment and machinery, in heating applications, in the food field and in the industrial field.



TECHNICAL DATA

TEMPERATURE RANGE	(-50 +250)°C
MODEL	Contact
SENSOR	PT1000
CAPSULE	Diameter 6x40 mm
CABLE	Teflon
TERMINITIONS	Tin-plated, tips, connectors (other terminations available on request)
RESPONSE TIME	10 s in non-static liquid at 63.2% (depends on configuration)
IDENTIFICATION	Laser on cable, label (customizable)
DECLARATIONS OF CONFORMITY	CE MARKING, CONFLICT MINERALS, REACH, REACH, ROHS

IT006C

STANDARD EYELET PROBES

PRODUCT FAMILY 15C005

Contact probe with PT1000 sensor, in Teflon cable, diameter 6x40 mm capsule. Suitable for temperature sensing in laboratory equipment and machinery, in heating applications, in the food field and in the industrial field.



TECHNICAL DATA

TEMPERATURE RANGE	(-50 +250)°C
MODEL	Contact
SENSOR	PT1000
CAPSULE	Diameter 6x40 mm
CABLE	Teflon
TERMINITIONS	Tin-plated, tips, connectors (other terminations available on request)
RESPONSE TIME	10 s in non-static liquid at 63.2% (depends on configuration)
IDENTIFICATION	Laser on cable, label (customizable)
DECLARATIONS OF CONFORMITY	CE MARKING, CONFLICT MINERALS, REACH, REACH, ROHS

ITR00C

PROBES WITH TAPERED METAL CAPSULE

PRODUCT FAMILY 15CA20

Probe with steel capsule, PT1000 sensor, in Teflon cable, diameter 3X15 mm + diameter 6X40 mm capsule. Suitable for temperature sensing in laboratory equipment and machinery, in refrigeration and air conditioning applications, in air quality control applications, in the field of renewable energy and in the food field.



TECHNICAL DATA

TEMPERATURE RANGE	(-50 +250)°C
MODEL	Steel capsule
SENSOR	PT1000
CAPSULE	Diameter 3X15 mm + Diameter 6X40 mm
CABLE	Teflon
TERMINITIONS	Tin-plated, tips, connectors (other terminations available on request)
RESPONSE TIME	10 s in non-static liquid at 63.2% (depends on configuration)
IDENTIFICATION	Laser on cable, label (customizable)
DECLARATIONS OF CONFORMITY	CE MARKING, CONFLICT MINERALS, REACH, REACH, ROHS

ITU05C

PROBES WITH FAST METAL CAPSULE

PRODUCT FAMILY 15CA10

Probe with steel capsule, PT1000 sensor, in Teflon cable, diameter 4x40 mm capsule. Suitable for temperature sensing in laboratory equipment and machinery, in refrigeration and air conditioning applications, in air quality control applications, in the field of renewable energy and in the food field.



TECHNICAL DATA

TEMPERATURE RANGE	(-50 +250)°C
MODEL	Steel capsule
SENSOR	PT1000
CAPSULE	Diameter 4x40 mm
CABLE	Teflon
TERMINITIONS	Tin-plated, tips, connectors (other terminations available on request)
RESPONSE TIME	10 s in non-static liquid at 63.2% (depends on configuration)
IDENTIFICATION	Laser on cable, label (customizable)
DECLARATIONS OF CONFORMITY	CE MARKING, CONFLICT MINERALS, MOCA, REACH, REACH, ROHS

IVM00C

PROBES WITH SLIDING THREADED CONNECTION

PRODUCT FAMILY 15CR10

Probe with connector, PT1000 sensor, in glass fibre cable, diameter 4x40 mm capsule. Suitable for temperature sensing in laboratory equipment and machinery, in heating applications, in the field of renewable energy, in the food field and in the industrial field.



TECHNICAL DATA

TEMPERATURE RANGE	(0 +250)°C
MODEL	With connector
SENSOR	PT1000
CAPSULE	Diameter 4x40 mm
CABLE	Glass fibre
TERMINITIONS	Tin-plated, tips, connectors (other terminations available on request)
RESPONSE TIME	10 s in non-static liquid at 63.2% (depends on configuration)
IDENTIFICATION	Laser on cable, label (customizable)
DECLARATIONS OF CONFORMITY	CE MARKING, CONFLICT MINERALS, REACH, REACH, ROHS

IVM01C

PROBES WITH WELDED
THREADED CONNECTION

PRODUCT FAMILY 15CR05

Probe with connector, PT1000 sensor, in glass fibre cable, diameter 4x40 mm capsule. Suitable for temperature sensing in laboratory equipment and machinery, in heating applications, in the field of renewable energy and in the food field.



TECHNICAL DATA

TEMPERATURE RANGE	(0 +250)°C
MODEL	With connector
SENSOR	PT1000
CAPSULE	Diameter 4x40 mm
CABLE	Glass fibre
TERMINITIONS	Tin-plated, tips, connectors (other terminations available on request)
RESPONSE TIME	10 s in non-static liquid at 63.2% (depends on configuration)
IDENTIFICATION	Laser on cable, label (customizable)
DECLARATIONS OF CONFORMITY	CE MARKING, CONFLICT MINERALS, REACH, REACH, ROHS

IVO02C

STANDARD EYELET PROBES

PRODUCT FAMILY 15C005

Contact probe with PT1000 sensor, in glass fibre cable, diameter 4x40 mm capsule. Suitable for temperature sensing in laboratory equipment and machinery, in heating applications, in the field of renewable energy, in the food field and in the industrial field.



TECHNICAL DATA

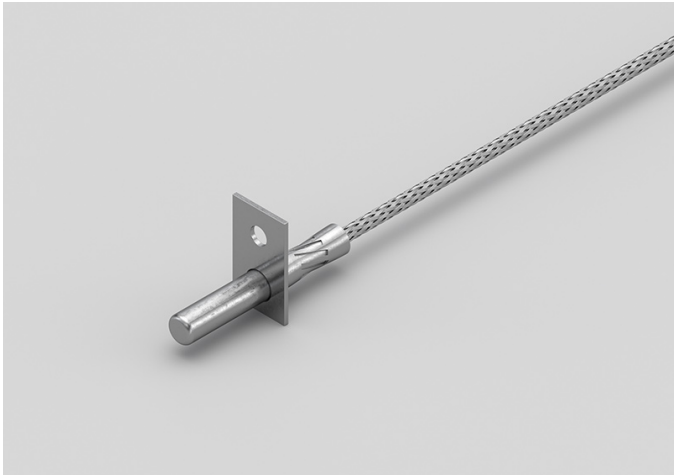
TEMPERATURE RANGE	(0 +350)°C
MODEL	Contact
SENSOR	PT1000
CAPSULE	Diameter 4x40 mm
CABLE	Glass fibre
TERMINITIONS	Tin-plated, tips, connectors (other terminations available on request)
RESPONSE TIME	10 s in non-static liquid at 63.2% (depends on configuration)
IDENTIFICATION	Laser on cable, label (customizable)
DECLARATIONS OF CONFORMITY	CE MARKING, CONFLICT MINERALS, REACH, REACH, ROHS

IVO03C

METAL CAPSULE PROBES
WITH FLANGE

PRODUCT FAMILY 15CA25

Contact probe with PT1000 sensor, in glass fibre cable, diameter 6x40 mm capsule. Suitable for temperature sensing in laboratory equipment and machinery.



TECHNICAL DATA

TEMPERATURE RANGE	(0 +350)°C
MODEL	Contact
SENSOR	PT1000
CAPSULE	Diameter 6x40 mm
CABLE	Glass fibre
TERMINITIONS	Tin-plated, tips, connectors (other terminations available on request)
RESPONSE TIME	10 s in non-static liquid at 63.2% (depends on configuration)
IDENTIFICATION	Laser on cable, label (customizable)
DECLARATIONS OF CONFORMITY	CE MARKING, CONFLICT MINERALS, REACH, REACH, ROHS

IVO04C

STANDARD EYELET PROBES

PRODUCT FAMILY 15C005

Contact probe with PT1000 sensor, in glass fibre cable, diameter 6x40 mm capsule. Suitable for temperature sensing in laboratory equipment and machinery.



TECHNICAL DATA

TEMPERATURE RANGE	(0 +350)°C
MODEL	Contact
SENSOR	PT1000
CAPSULE	Diameter 6x40 mm
CABLE	Glass fibre
TERMINITIONS	Tin-plated, tips, connectors (other terminations available on request)
RESPONSE TIME	10 s in non-static liquid at 63.2% (depends on configuration)
IDENTIFICATION	Laser on cable, label (customizable)
DECLARATIONS OF CONFORMITY	CE MARKING, CONFLICT MINERALS, REACH, REACH, ROHS

IVR01C

PROBES WITH TAPERED METAL CAPSULE

PRODUCT FAMILY 15CA20

Probe with steel capsule, PT1000 sensor, in glass fibre cable, diameter 3X15 mm + diameter 6X40 mm capsule. Suitable for temperature sensing in laboratory equipment and machinery.



TECHNICAL DATA

TEMPERATURE RANGE	(0 +350)°C
MODEL	Steel capsule
SENSOR	PT1000
CAPSULE	Diameter 3X15 mm + Diameter 6X40 mm
CABLE	Glass fibre
TERMINITIONS	Tin-plated, tips, connectors (other terminations available on request)
RESPONSE TIME	10 s in non-static liquid at 63.2% (depends on configuration)
IDENTIFICATION	Laser on cable, label (customizable)
DECLARATIONS OF CONFORMITY	CE MARKING, CONFLICT MINERALS, REACH, REACH, ROHS

IVU07C

PROBES WITH FAST METAL CAPSULE

PRODUCT FAMILY 15CA10

Probe with steel capsule, PT1000 sensor, in glass fibre cable, diameter 4x40 mm capsule. Suitable for temperature sensing in laboratory equipment and machinery, in heating applications, in the food field and in the industrial field.



TECHNICAL DATA

TEMPERATURE RANGE	(0 +350)°C
MODEL	Steel capsule
SENSOR	PT1000
CAPSULE	Diameter 4x40 mm
CABLE	Glass fibre
TERMINITIONS	Tin-plated, tips, connectors (other terminations available on request)
RESPONSE TIME	10 s in non-static liquid at 63.2% (depends on configuration)
IDENTIFICATION	Laser on cable, label (customizable)
DECLARATIONS OF CONFORMITY	CE MARKING, CONFLICT MINERALS, MOCA, REACH, REACH, ROHS

JKX01C

PROBES WITH EXPOSED
NON-INSULATED SENSOR

PRODUCT FAMILY 10EP15

Probe with exposed sensor, TCJ sensor, in Kapton cable, without capsule capsule. Suitable for temperature sensing in laboratory equipment and machinery, in heating applications and in the food field.



TECHNICAL DATA

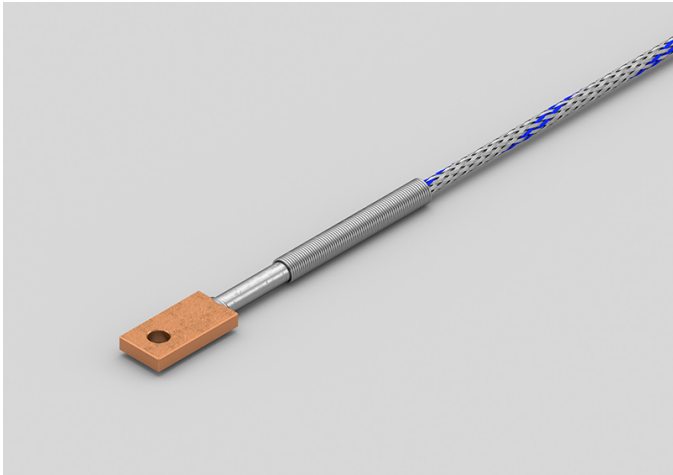
TEMPERATURE RANGE	(0 +350)°C
MODEL	Exposed sensor
SENSOR	TCJ
CAPSULE	Without capsule
CABLE	Kapton
TERMINITIONS	Tin-plated, tips, connectors (other terminations available on request)
RESPONSE TIME	10 s in non-static liquid at 63.2% (depends on configuration)
IDENTIFICATION	Laser on cable, label (customizable)
DECLARATIONS OF CONFORMITY	CE MARKING, CONFLICT MINERALS, REACH, REACH, ROHS

JV019C

RECTANGULAR PLATE EYELET PROBES

PRODUCT FAMILY 15C015

Contact probe with TCJ sensor, in glass fibre cable, plate-shaped capsule. Suitable for temperature sensing in laboratory equipment and machinery, in heating applications, in the food field and in the industrial field.



TECHNICAL DATA

TEMPERATURE RANGE	(0 +350)°C
MODEL	Contact
SENSOR	TCJ
CAPSULE	Plate
CABLE	Glass fibre
TERMINITIONS	Tin-plated, tips, connectors (other terminations available on request)
RESPONSE TIME	10 s in non-static liquid at 63.2% (depends on configuration)
IDENTIFICATION	Laser on cable, label (customizable)
DECLARATIONS OF CONFORMITY	CE MARKING, CONFLICT MINERALS, REACH, REACH, ROHS

JVO20C

EYELET RING PROBES

PRODUCT FAMILY 15C010

Contact probe with TCJ sensor, in glass fibre cable, plate-shaped capsule. Suitable for temperature sensing in laboratory equipment and machinery.



TECHNICAL DATA

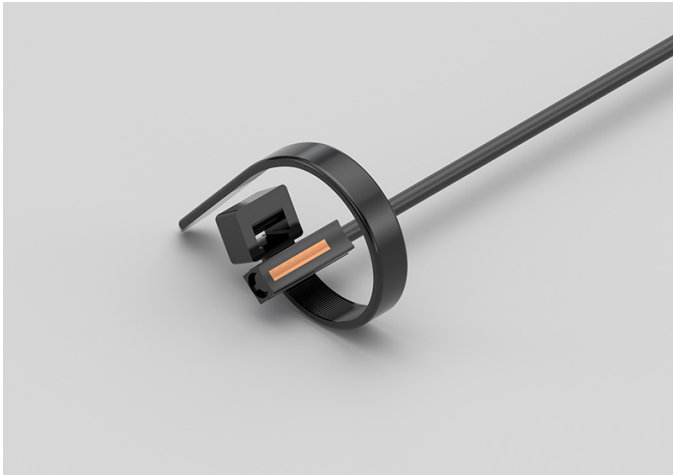
TEMPERATURE RANGE	(0 +350)°C
MODEL	Contact
SENSOR	TCJ
CAPSULE	Plate
CABLE	Glass fibre
TERMINITIONS	Tin-plated, tips, connectors (other terminations available on request)
RESPONSE TIME	10 s in non-static liquid at 63.2% (depends on configuration)
IDENTIFICATION	Laser on cable, label (customizable)
DECLARATIONS OF CONFORMITY	CE MARKING, CONFLICT MINERALS, REACH, REACH, ROHS

NDI13C

IP67 COPPER CAPSULE
BRACELET PROBES WITH
METAL CLAMP

PRODUCT FAMILY 30GB11

Probe with bracelet, NTC sensor, TPE round cable, 6x6x15 mm + copper capsule. Suitable for temperature sensing in laboratory equipment and machinery.



TECHNICAL DATA

TEMPERATURE RANGE	(-50 +110)°C
MODEL	Bracelet
SENSOR	NTC
CAPSULE	6x6x15 mm + copper
CABLE	TPE round
TERMINITIONS	Tin-plated, tips, connectors (other terminations available on request)
RESPONSE TIME	10 s in non-static liquid at 63.2% (depends on configuration)
IDENTIFICATION	Laser on cable, label (customizable)
DECLARATIONS OF CONFORMITY	CE MARKING, CONFLICT MINERALS, REACH, REACH, ROHS

NEB00C

IP67 RUBBER PROBES
Ø6X40..50/60 MM STEEL
CAPSULE

PRODUCT FAMILY 30GC13

IP67 probe with NTC sensor, TPE flat cable, diameter 6x40 mm capsule. Suitable for temperature sensing in laboratory equipment and machinery.



TECHNICAL DATA

TEMPERATURE RANGE	(-50 +120)°C
MODEL	IP67
SENSOR	NTC
CAPSULE	Diameter 6x40 mm
CABLE	TPE flat
TERMINITIONS	Tin-plated, tips, connectors (other terminations available on request)
RESPONSE TIME	10 s in non-static liquid at 63.2% (depends on configuration)
IDENTIFICATION	Laser on cable, label (customizable)
DECLARATIONS OF CONFORMITY	CE MARKING, CONFLICT MINERALS, REACH, REACH, ROHS

NEE00C

IP67 RUBBER PROBES

6X6X15 MM RUBBER CAPSULE

PRODUCT FAMILY 30GC10

IP67 probe with NTC sensor, TPE flat cable, 1,5x5x6 mm capsule. Suitable for temperature sensing in laboratory equipment and machinery.



TECHNICAL DATA

TEMPERATURE RANGE	(-50 +120)°C
MODEL	IP67
SENSOR	NTC
CAPSULE	1,5x5x6 mm
CABLE	TPE flat
TERMINITIONS	Tin-plated, tips, connectors (other terminations available on request)
RESPONSE TIME	10 s in non-static liquid at 63.2% (depends on configuration)
IDENTIFICATION	Laser on cable, label (customizable)
DECLARATIONS OF CONFORMITY	CE MARKING, CONFLICT MINERALS, REACH, REACH, ROHS

NEH01C

IP67 RUBBER PROBES
Ø6X40..50/60 MM STEEL
CAPSULE

PRODUCT FAMILY 30GC13

IP67 probe with NTC sensor, TPE flat cable, diameter 6x50 mm capsule. Suitable for temperature sensing in laboratory equipment and machinery.



TECHNICAL DATA

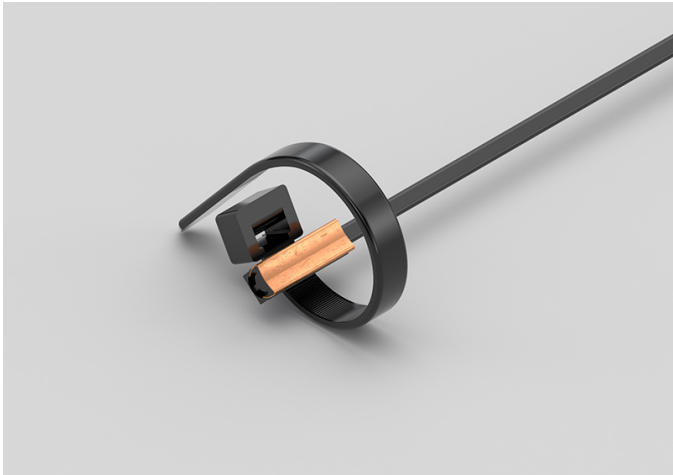
TEMPERATURE RANGE	(-50 +120)°C
MODEL	IP67
SENSOR	NTC
CAPSULE	Diameter 6x50 mm
CABLE	TPE flat
TERMINITIONS	Tin-plated, tips, connectors (other terminations available on request)
RESPONSE TIME	10 s in non-static liquid at 63.2% (depends on configuration)
IDENTIFICATION	Laser on cable, label (customizable)
DECLARATIONS OF CONFORMITY	CE MARKING, CONFLICT MINERALS, REACH, REACH, ROHS

NEI09C

IP55 COPPER PLATE
BRACELET PROBES WITH
METAL CLAMP

PRODUCT FAMILY 30GB16

Probe with bracelet, NTC sensor, TPE flat cable, 6x6x15 mm + copper plate capsule. Suitable for temperature sensing in laboratory equipment and machinery.



TECHNICAL DATA

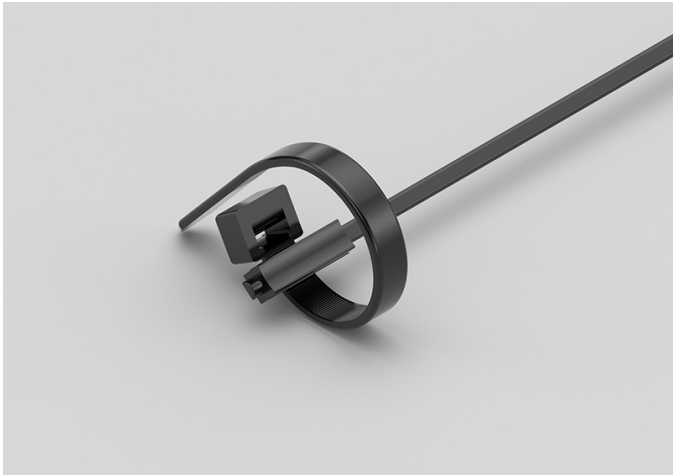
TEMPERATURE RANGE	(-50 +120)°C
MODEL	Bracelet
SENSOR	NTC
CAPSULE	6x6x15 mm + copper plate
CABLE	TPE flat
TERMINITIONS	Tin-plated, tips, connectors (other terminations available on request)
RESPONSE TIME	10 s in non-static liquid at 63.2% (depends on configuration)
IDENTIFICATION	Laser on cable, label (customizable)
DECLARATIONS OF CONFORMITY	CE MARKING, CONFLICT MINERALS, REACH, REACH, ROHS

NEI10C

IP67 RUBBER BRACELET PROBES WITH METAL CLAMP

PRODUCT FAMILY 30GB08

Probe with bracelet, NTC sensor, TPE flat cable, 6x6x15 mm capsule. Suitable for temperature sensing in laboratory equipment and machinery, in heating applications and in the food field.



TECHNICAL DATA

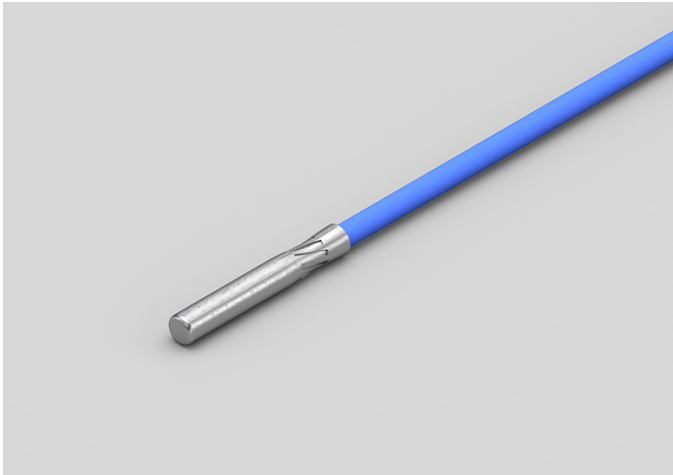
TEMPERATURE RANGE	(-50 +120)°C
MODEL	Bracelet
SENSOR	NTC
CAPSULE	6x6x15 mm
CABLE	TPE flat
TERMINITIONS	Tin-plated, tips, connectors (other terminations available on request)
RESPONSE TIME	10 s in non-static liquid at 63.2% (depends on configuration)
IDENTIFICATION	Laser on cable, label (customizable)
DECLARATIONS OF CONFORMITY	CE MARKING, CONFLICT MINERALS, REACH, REACH, ROHS

RGB15C

PROBES WITH STANDARD METAL CAPSULE

PRODUCT FAMILY 15CA05

Probe with steel capsule, NTC sensor, in silicone cable, diameter 6x40 mm capsule. Suitable for temperature sensing in refrigeration and air conditioning applications, in air quality control applications, in heating applications and in the food field.



TECHNICAL DATA

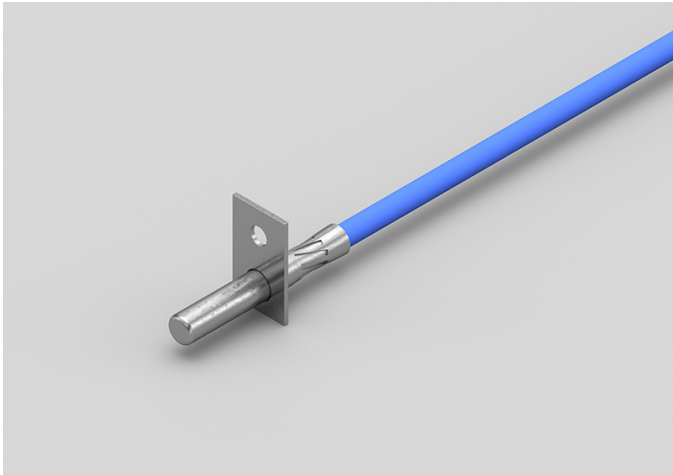
TEMPERATURE RANGE	(-50 +200)°C
MODEL	Steel capsule
SENSOR	NTC
CAPSULE	Diameter 6x40 mm
CABLE	Silicone
TERMINITIONS	Tin-plated, tips, connectors (other terminations available on request)
RESPONSE TIME	10 s in non-static liquid at 63.2% (depends on configuration)
IDENTIFICATION	Laser on cable, label (customizable)
DECLARATIONS OF CONFORMITY	CE MARKING, CONFLICT MINERALS, MOCA, REACH, REACH, ROHS

RGB26C

METAL CAPSULE PROBES WITH FLANGE

PRODUCT FAMILY 15CA25

Contact probe with NTC sensor, in silicone cable, diameter 6x40 mm capsule. Suitable for temperature sensing in refrigeration and air conditioning applications and in the food field.



TECHNICAL DATA

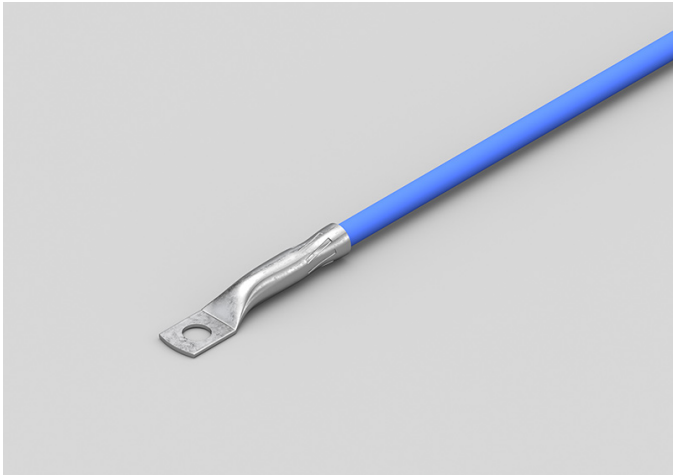
TEMPERATURE RANGE	(-50 +200)°C
MODEL	Contact
SENSOR	NTC
CAPSULE	Diameter 6x40 mm
CABLE	Silicone
TERMINITIONS	Tin-plated, tips, connectors (other terminations available on request)
RESPONSE TIME	10 s in non-static liquid at 63.2% (depends on configuration)
IDENTIFICATION	Laser on cable, label (customizable)
DECLARATIONS OF CONFORMITY	CE MARKING, CONFLICT MINERALS, MOCA, REACH, REACH, ROHS

RGB27C

STANDARD EYELET PROBES

PRODUCT FAMILY 15C005

Contact probe with NTC sensor, in silicone cable, diameter 6x40 mm capsule. Suitable for temperature sensing in refrigeration and air conditioning applications and in the food field.



TECHNICAL DATA

TEMPERATURE RANGE	(-50 +200)°C
MODEL	Contact
SENSOR	NTC
CAPSULE	Diameter 6x40 mm
CABLE	Silicone
TERMINITIONS	Tin-plated, tips, connectors (other terminations available on request)
RESPONSE TIME	10 s in non-static liquid at 63.2% (depends on configuration)
IDENTIFICATION	Laser on cable, label (customizable)
DECLARATIONS OF CONFORMITY	CE MARKING, CONFLICT MINERALS, MOCA, REACH, REACH, ROHS

RGM04C

PROBES WITH WELDED
THREADED CONNECTION

PRODUCT FAMILY 15CR05

Probe with connector, NTC sensor, in silicone cable, diameter 4x40 mm capsule. Suitable for temperature sensing in heating applications and in the food field.



TECHNICAL DATA

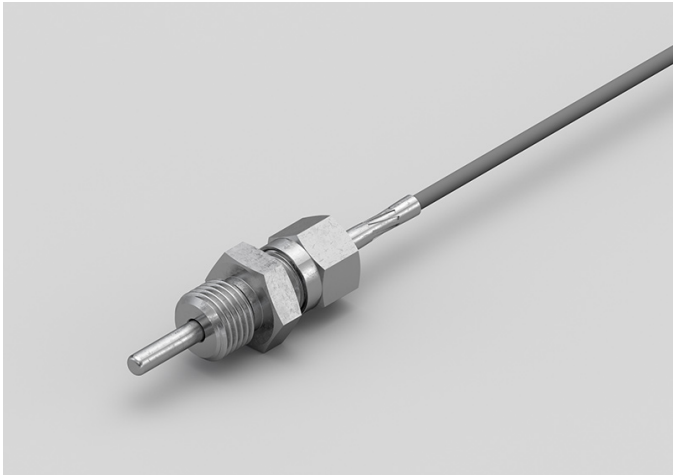
TEMPERATURE RANGE	(-50 +200)°C
MODEL	With connector
SENSOR	NTC
CAPSULE	Diameter 4x40 mm
CABLE	Silicone
TERMINITIONS	Tin-plated, tips, connectors (other terminations available on request)
RESPONSE TIME	10 s in non-static liquid at 63.2% (depends on configuration)
IDENTIFICATION	Laser on cable, label (customizable)
DECLARATIONS OF CONFORMITY	CE MARKING, CONFLICT MINERALS, REACH, REACH, ROHS

RGM05C

PROBES WITH SLIDING
THREADED CONNECTION

PRODUCT FAMILY 15CR10

Probe with connector, NTC sensor, in silicone cable, diameter 4x40 mm capsule. Suitable for temperature sensing in heating applications and in the food field.



TECHNICAL DATA

TEMPERATURE RANGE	(-50 +200)°C
MODEL	With connector
SENSOR	NTC
CAPSULE	Diameter 4x40 mm
CABLE	Silicone
TERMINITIONS	Tin-plated, tips, connectors (other terminations available on request)
RESPONSE TIME	10 s in non-static liquid at 63.2% (depends on configuration)
IDENTIFICATION	Laser on cable, label (customizable)
DECLARATIONS OF CONFORMITY	CE MARKING, CONFLICT MINERALS, REACH, REACH, ROHS

RG001C

STANDARD EYELET PROBES

PRODUCT FAMILY 15C005

Contact probe with NTC sensor, in silicone cable, diameter 4x40 mm capsule. Suitable for temperature sensing in air quality control applications and in the field of renewable energy.



TECHNICAL DATA

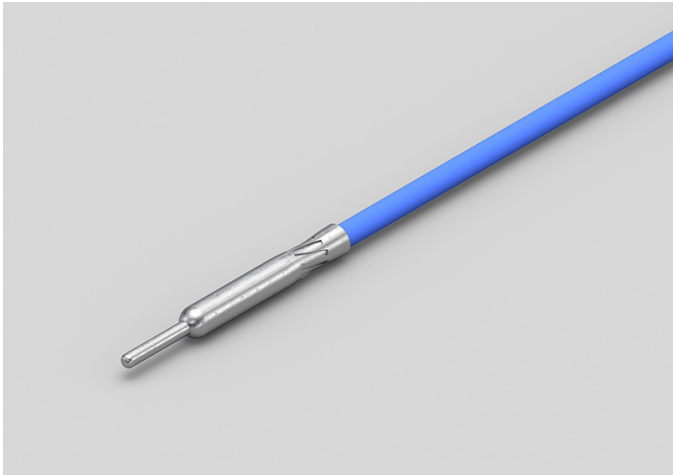
TEMPERATURE RANGE	(-50 +200)°C
MODEL	Contact
SENSOR	NTC
CAPSULE	Diameter 4x40 mm
CABLE	Silicone
TERMINITIONS	Tin-plated, tips, connectors (other terminations available on request)
RESPONSE TIME	10 s in non-static liquid at 63.2% (depends on configuration)
IDENTIFICATION	Laser on cable, label (customizable)
DECLARATIONS OF CONFORMITY	CE MARKING, CONFLICT MINERALS, MOCA, REACH, REACH, ROHS

RGR01C

PROBES WITH TAPERED
METAL CAPSULE

PRODUCT FAMILY 15CA20

Probe with steel capsule, NTC sensor, in silicone cable, diameter 3X15 mm + diameter 6X40 mm capsule. Suitable for temperature sensing in air quality control applications and in the field of renewable energy.



TECHNICAL DATA

TEMPERATURE RANGE	(-50 +200)°C
MODEL	Steel capsule
SENSOR	NTC
CAPSULE	Diameter 3X15 mm + Diameter 6X40 mm
CABLE	Silicone
TERMINITIONS	Tin-plated, tips, connectors (other terminations available on request)
RESPONSE TIME	10 s in non-static liquid at 63.2% (depends on configuration)
IDENTIFICATION	Laser on cable, label (customizable)
DECLARATIONS OF CONFORMITY	CE MARKING, CONFLICT MINERALS, REACH, REACH, ROHS

RGU02C

PROBES WITH FAST METAL CAPSULE

PRODUCT FAMILY 15CA10

Probe with steel capsule, NTC sensor, in silicone cable, diameter 4x40 mm capsule. Suitable for temperature sensing in refrigeration and air conditioning applications, in air quality control applications, in heating applications, in the field of renewable energy and in the food field.



TECHNICAL DATA

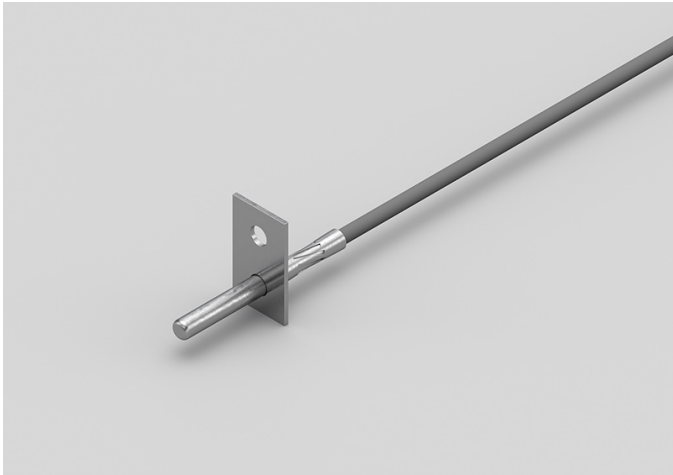
TEMPERATURE RANGE	(-50 +200)°C
MODEL	Steel capsule
SENSOR	NTC
CAPSULE	Diameter 4x40 mm
CABLE	Silicone
TERMINITIONS	Tin-plated, tips, connectors (other terminations available on request)
RESPONSE TIME	10 s in non-static liquid at 63.2% (depends on configuration)
IDENTIFICATION	Laser on cable, label (customizable)
DECLARATIONS OF CONFORMITY	CE MARKING, CONFLICT MINERALS, MOCA, REACH, REACH, ROHS

RGU03C

METAL CAPSULE PROBES
WITH FLANGE

PRODUCT FAMILY 15CA25

Contact probe with NTC sensor, in silicone cable, diameter 4x40 mm capsule. Suitable for temperature sensing in refrigeration and air conditioning applications, in air quality control applications, in heating applications, in the field of renewable energy and in the food field.



TECHNICAL DATA

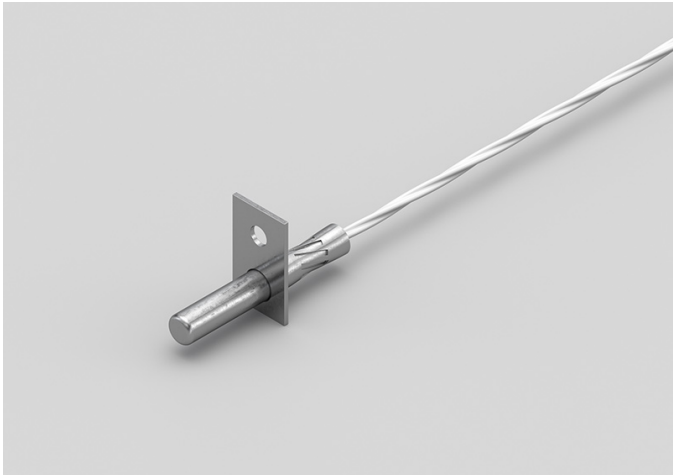
TEMPERATURE RANGE	(-50 +200)°C
MODEL	Contact
SENSOR	NTC
CAPSULE	Diameter 4x40 mm
CABLE	Silicone
TERMINITIONS	Tin-plated, tips, connectors (other terminations available on request)
RESPONSE TIME	10 s in non-static liquid at 63.2% (depends on configuration)
IDENTIFICATION	Laser on cable, label (customizable)
DECLARATIONS OF CONFORMITY	CE MARKING, CONFLICT MINERALS, MOCA, REACH, REACH, ROHS

RTB01C

METAL CAPSULE PROBES
WITH FLANGE

PRODUCT FAMILY 15CA25

Contact probe with NTC sensor, in Teflon cable, diameter 6x40 mm capsule. Suitable for temperature sensing in refrigeration and air conditioning applications, in air quality control applications, in heating applications and in the food field.



TECHNICAL DATA

TEMPERATURE RANGE	(-50 +250)°C
MODEL	Contact
SENSOR	NTC
CAPSULE	Diameter 6x40 mm
CABLE	Teflon
TERMINITIONS	Tin-plated, tips, connectors (other terminations available on request)
RESPONSE TIME	10 s in non-static liquid at 63.2% (depends on configuration)
IDENTIFICATION	Laser on cable, label (customizable)
DECLARATIONS OF CONFORMITY	CE MARKING, CONFLICT MINERALS, MOCA, REACH, REACH, ROHS

RTB02C

PROBES WITH STANDARD METAL CAPSULE

PRODUCT FAMILY 15CA05

Probe with steel capsule, NTC sensor, in Teflon cable, diameter 6x40 mm capsule. Suitable for temperature sensing in heating applications and in the food field.



TECHNICAL DATA

TEMPERATURE RANGE	(-50 +250)°C
MODEL	Steel capsule
SENSOR	NTC
CAPSULE	Diameter 6x40 mm
CABLE	Teflon
TERMINITIONS	Tin-plated, tips, connectors (other terminations available on request)
RESPONSE TIME	10 s in non-static liquid at 63.2% (depends on configuration)
IDENTIFICATION	Laser on cable, label (customizable)
DECLARATIONS OF CONFORMITY	CE MARKING, CONFLICT MINERALS, MOCA, REACH, REACH, ROHS

RTM03C

PROBES WITH WELDED
THREADED CONNECTION

PRODUCT FAMILY 15CR05

Probe with connector, NTC sensor, in Teflon cable, diameter 4x40 mm capsule. Suitable for temperature sensing in refrigeration and air conditioning applications, in the food field and in the industrial field.



TECHNICAL DATA

TEMPERATURE RANGE	(-50 +250)°C
MODEL	With connector
SENSOR	NTC
CAPSULE	Diameter 4x40 mm
CABLE	Teflon
TERMINITIONS	Tin-plated, tips, connectors (other terminations available on request)
RESPONSE TIME	10 s in non-static liquid at 63.2% (depends on configuration)
IDENTIFICATION	Laser on cable, label (customizable)
DECLARATIONS OF CONFORMITY	CE MARKING, CONFLICT MINERALS, REACH, REACH, ROHS

RTM04C

PROBES WITH SLIDING
THREADED CONNECTION

PRODUCT FAMILY 15CR10

Probe with connector, NTC sensor, in Teflon cable, diameter 4x40 mm capsule. Suitable for temperature sensing in heating applications and in the food field.



TECHNICAL DATA

TEMPERATURE RANGE	(-50 +250)°C
MODEL	With connector
SENSOR	NTC
CAPSULE	Diameter 4x40 mm
CABLE	Teflon
TERMINITIONS	Tin-plated, tips, connectors (other terminations available on request)
RESPONSE TIME	10 s in non-static liquid at 63.2% (depends on configuration)
IDENTIFICATION	Laser on cable, label (customizable)
DECLARATIONS OF CONFORMITY	CE MARKING, CONFLICT MINERALS, REACH, REACH, ROHS

RT001C

STANDARD EYELET PROBES

PRODUCT FAMILY 15C005

Contact probe with NTC sensor, in Teflon cable, diameter 6x40 mm capsule. Suitable for temperature sensing in the food field.



TECHNICAL DATA

TEMPERATURE RANGE	(-50 +250)°C
MODEL	Contact
SENSOR	NTC
CAPSULE	Diameter 6x40 mm
CABLE	Teflon
TERMINITIONS	Tin-plated, tips, connectors (other terminations available on request)
RESPONSE TIME	10 s in non-static liquid at 63.2% (depends on configuration)
IDENTIFICATION	Laser on cable, label (customizable)
DECLARATIONS OF CONFORMITY	CE MARKING, CONFLICT MINERALS, MOCA, REACH, REACH, ROHS

RT002C

STANDARD EYELET PROBES

PRODUCT FAMILY 15C005

Contact probe with NTC sensor, in Teflon cable, diameter 4x40 mm capsule. Suitable for temperature sensing in the field of renewable energy.



TECHNICAL DATA

TEMPERATURE RANGE	(-50 +250)°C
MODEL	Contact
SENSOR	NTC
CAPSULE	Diameter 4x40 mm
CABLE	Teflon
TERMINITIONS	Tin-plated, tips, connectors (other terminations available on request)
RESPONSE TIME	10 s in non-static liquid at 63.2% (depends on configuration)
IDENTIFICATION	Laser on cable, label (customizable)
DECLARATIONS OF CONFORMITY	CE MARKING, CONFLICT MINERALS, MOCA, REACH, REACH, ROHS

RTR07C

PROBES WITH TAPERED METAL CAPSULE

PRODUCT FAMILY 15CA20

Probe with steel capsule, NTC sensor, in Teflon cable, diameter 3X15 mm + diameter 6X40 mm capsule. Suitable for temperature sensing in refrigeration and air conditioning applications, in air quality control applications, in heating applications and in the food field.



TECHNICAL DATA

TEMPERATURE RANGE	(-50 +250)°C
MODEL	Steel capsule
SENSOR	NTC
CAPSULE	Diameter 3X15 mm + Diameter 6X40 mm
CABLE	Teflon
TERMINITIONS	Tin-plated, tips, connectors (other terminations available on request)
RESPONSE TIME	10 s in non-static liquid at 63.2% (depends on configuration)
IDENTIFICATION	Laser on cable, label (customizable)
DECLARATIONS OF CONFORMITY	CE MARKING, CONFLICT MINERALS, REACH, REACH, ROHS

RTU03C

PROBES WITH FAST METAL CAPSULE

PRODUCT FAMILY 15CA10

Probe with steel capsule, NTC sensor, in Teflon cable, diameter 4x40 mm capsule. Suitable for temperature sensing in the field of renewable energy.



TECHNICAL DATA

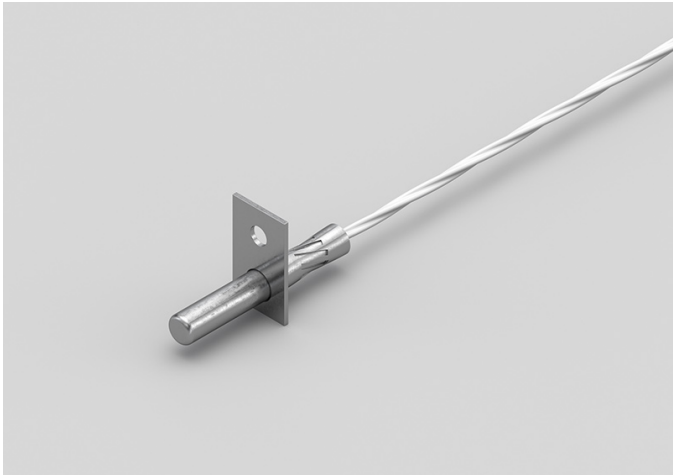
TEMPERATURE RANGE	(-50 +250)°C
MODEL	Steel capsule
SENSOR	NTC
CAPSULE	Diameter 4x40 mm
CABLE	Teflon
TERMINITIONS	Tin-plated, tips, connectors (other terminations available on request)
RESPONSE TIME	10 s in non-static liquid at 63.2% (depends on configuration)
IDENTIFICATION	Laser on cable, label (customizable)
DECLARATIONS OF CONFORMITY	CE MARKING, CONFLICT MINERALS, MOCA, REACH, REACH, ROHS

RTU05C

METAL CAPSULE PROBES WITH FLANGE

PRODUCT FAMILY 15CA25

Contact probe with NTC sensor, in Teflon cable, diameter 4x40 mm capsule. Suitable for temperature sensing in the field of renewable energy and in the food field.



TECHNICAL DATA

TEMPERATURE RANGE	(-50 +250)°C
MODEL	Contact
SENSOR	NTC
CAPSULE	Diameter 4x40 mm
CABLE	Teflon
TERMINITIONS	Tin-plated, tips, connectors (other terminations available on request)
RESPONSE TIME	10 s in non-static liquid at 63.2% (depends on configuration)
IDENTIFICATION	Laser on cable, label (customizable)
DECLARATIONS OF CONFORMITY	CE MARKING, CONFLICT MINERALS, MOCA, REACH, REACH, ROHS

RVB01C

PROBES WITH STANDARD METAL CAPSULE

PRODUCT FAMILY 15CA05

Probe with steel capsule, NTC sensor, in glass fibre cable, diameter 6x40 mm capsule. Suitable for temperature sensing in refrigeration and air conditioning applications, in the field of renewable energy, in the food field and in the industrial field.



TECHNICAL DATA

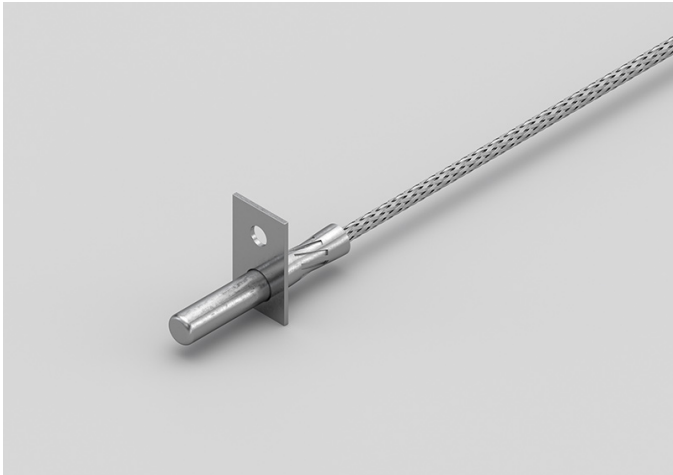
TEMPERATURE RANGE	(0 +300)°C
MODEL	Steel capsule
SENSOR	NTC
CAPSULE	Diameter 6x40 mm
CABLE	Glass fibre
TERMINITIONS	Tin-plated, tips, connectors (other terminations available on request)
RESPONSE TIME	10 s in non-static liquid at 63.2% (depends on configuration)
IDENTIFICATION	Laser on cable, label (customizable)
DECLARATIONS OF CONFORMITY	CE MARKING, CONFLICT MINERALS, MOCA, REACH, REACH, ROHS

RVB02C

METAL CAPSULE PROBES
WITH FLANGE

PRODUCT FAMILY 15CA25

Contact probe with NTC sensor, in glass fibre cable, diameter 6x40 mm capsule. Suitable for temperature sensing in refrigeration and air conditioning applications, in the field of renewable energy, in the food field and in the industrial field.



TECHNICAL DATA

TEMPERATURE RANGE	(0 +300)°C
MODEL	Contact
SENSOR	NTC
CAPSULE	Diameter 6x40 mm
CABLE	Glass fibre
TERMINITIONS	Tin-plated, tips, connectors (other terminations available on request)
RESPONSE TIME	10 s in non-static liquid at 63.2% (depends on configuration)
IDENTIFICATION	Laser on cable, label (customizable)
DECLARATIONS OF CONFORMITY	CE MARKING, CONFLICT MINERALS, MOCA, REACH, REACH, ROHS

RVM01C

PROBES WITH SLIDING
THREADED CONNECTION

PRODUCT FAMILY 15CR10

Probe with connector, NTC sensor, in glass fibre cable, diameter 4x40 mm capsule. Suitable for temperature sensing in heating applications and in the food field.



TECHNICAL DATA

TEMPERATURE RANGE	(0 +300)°C
MODEL	With connector
SENSOR	NTC
CAPSULE	Diameter 4x40 mm
CABLE	Glass fibre
TERMINITIONS	Tin-plated, tips, connectors (other terminations available on request)
RESPONSE TIME	10 s in non-static liquid at 63.2% (depends on configuration)
IDENTIFICATION	Laser on cable, label (customizable)
DECLARATIONS OF CONFORMITY	CE MARKING, CONFLICT MINERALS, REACH, REACH, ROHS

RVM04C

PROBES WITH WELDED
THREADED CONNECTION

PRODUCT FAMILY 15CR05

Probe with connector, NTC sensor, in glass fibre cable, diameter 4x40 mm capsule. Suitable for temperature sensing in the industrial field.



TECHNICAL DATA

TEMPERATURE RANGE	(0 +300)°C
MODEL	With connector
SENSOR	NTC
CAPSULE	Diameter 4x40 mm
CABLE	Glass fibre
TERMINITIONS	Tin-plated, tips, connectors (other terminations available on request)
RESPONSE TIME	10 s in non-static liquid at 63.2% (depends on configuration)
IDENTIFICATION	Laser on cable, label (customizable)
DECLARATIONS OF CONFORMITY	CE MARKING, CONFLICT MINERALS, REACH, REACH, ROHS

RVO01C

STANDARD EYELET PROBES

PRODUCT FAMILY 15C005

Contact probe with NTC sensor, in glass fibre cable, diameter 6x40 mm capsule. Suitable for temperature sensing in heating applications, in the food field and in the industrial field.



TECHNICAL DATA

TEMPERATURE RANGE	(0 +300)°C
MODEL	Contact
SENSOR	NTC
CAPSULE	Diameter 6x40 mm
CABLE	Glass fibre
TERMINITIONS	Tin-plated, tips, connectors (other terminations available on request)
RESPONSE TIME	10 s in non-static liquid at 63.2% (depends on configuration)
IDENTIFICATION	Laser on cable, label (customizable)
DECLARATIONS OF CONFORMITY	CE MARKING, CONFLICT MINERALS, REACH, REACH, ROHS

RVO02C

STANDARD EYELET PROBES

PRODUCT FAMILY 15C005

Contact probe with NTC sensor, in glass fibre cable, diameter 4x40 mm capsule. Suitable for temperature sensing in the industrial field.



TECHNICAL DATA

TEMPERATURE RANGE	(0 +300)°C
MODEL	Contact
SENSOR	NTC
CAPSULE	Diameter 4x40 mm
CABLE	Glass fibre
TERMINITIONS	Tin-plated, tips, connectors (other terminations available on request)
RESPONSE TIME	10 s in non-static liquid at 63.2% (depends on configuration)
IDENTIFICATION	Laser on cable, label (customizable)
DECLARATIONS OF CONFORMITY	CE MARKING, CONFLICT MINERALS, REACH, REACH, ROHS

RVR00C

PROBES WITH TAPERED METAL CAPSULE

PRODUCT FAMILY 15CA20

Probe with steel capsule, NTC sensor, in glass fibre cable, diameter 3X15 mm + diameter 6X40 mm capsule. Suitable for temperature sensing in the industrial field.



TECHNICAL DATA

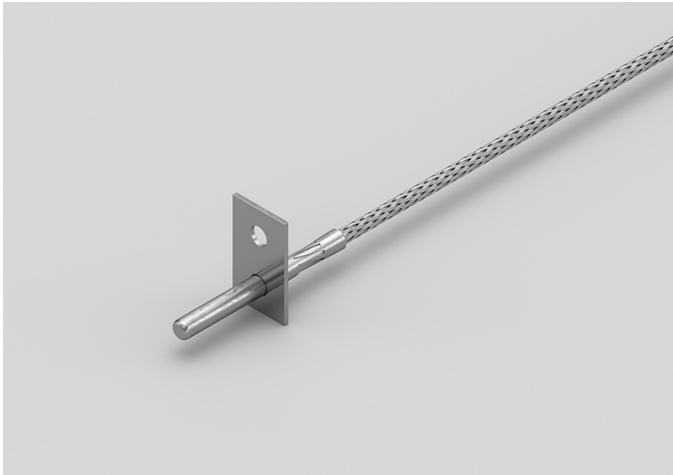
TEMPERATURE RANGE	(0 +300)°C
MODEL	Steel capsule
SENSOR	NTC
CAPSULE	Diameter 3X15 mm + Diameter 6X40 mm
CABLE	Glass fibre
TERMINITIONS	Tin-plated, tips, connectors (other terminations available on request)
RESPONSE TIME	10 s in non-static liquid at 63.2% (depends on configuration)
IDENTIFICATION	Laser on cable, label (customizable)
DECLARATIONS OF CONFORMITY	CE MARKING, CONFLICT MINERALS, REACH, REACH, ROHS

RVU02C

METAL CAPSULE PROBES
WITH FLANGE

PRODUCT FAMILY 15CA25

Contact probe with NTC sensor, in glass fibre cable, diameter 4x40 mm capsule. Suitable for temperature sensing in heating applications, in the food field and in the industrial field.



TECHNICAL DATA

TEMPERATURE RANGE	(0 +300)°C
MODEL	Contact
SENSOR	NTC
CAPSULE	Diameter 4x40 mm
CABLE	Glass fibre
TERMINITIONS	Tin-plated, tips, connectors (other terminations available on request)
RESPONSE TIME	10 s in non-static liquid at 63.2% (depends on configuration)
IDENTIFICATION	Laser on cable, label (customizable)
DECLARATIONS OF CONFORMITY	CE MARKING, CONFLICT MINERALS, MOCA, REACH, REACH, ROHS



SACET S.R.L.
Via del Candel, 55/D
32100 Belluno (BL) Italy

C.F. E P.I. 00654590256

PHONE NUMBER +39 0437 33166

EMAIL info@sacet-probes.com