

CATALOG

TEMPERATURE PROBES

APPLICATION HEATING

CATEGORY RADIANT AND FAN COIL SYSTEMS

CATEGORY

RADIANT AND FAN COIL SYSTEMS

Operational safety, reliability and proper functioning depend on monitoring and protection mechanisms. We have a wide range of temperature measurement products (thermal protection).

AEI00C

IP55 COPPER PLATE BRACELET PROBES

PRODUCT FAMILY 30GB15

Probe with bracelet, PTC sensor, TPE flat cable, 6x6x15 mm + copper plate capsule. Suitable for temperature sensing in laboratory equipment and machinery, in refrigeration and air conditioning applications, in air quality control applications, in heating applications, in the food field and in the industrial field.



TECHNICAL DATA

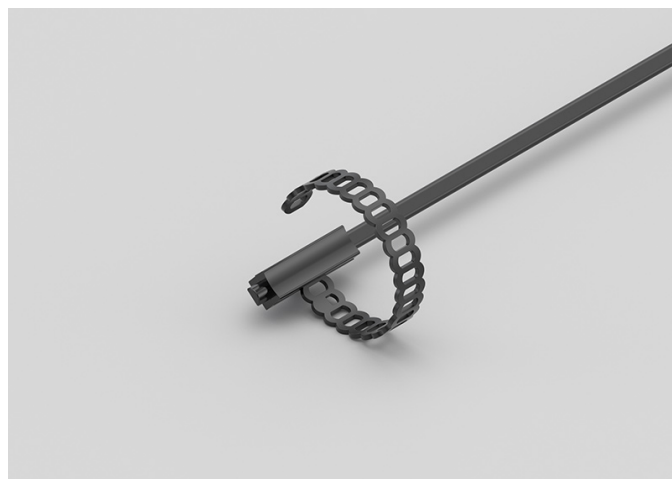
| | |
|----------------------------|--|
| TEMPERATURE RANGE | (-50 +120)°C |
| MODEL | Bracelet |
| SENSOR | PTC |
| CAPSULE | 6x6x15 mm + copper plate |
| CABLE | TPE flat |
| TERMINITIONS | Tin-plated, tips, connectors (other terminations available on request) |
| RESPONSE TIME | 10 s in non-static liquid at 63.2% (depends on configuration) |
| IDENTIFICATION | Laser on cable, label (customizable) |
| DECLARATIONS OF CONFORMITY | CE MARKING, CONFLICT MINERALS, REACH, REACH, ROHS |

AEI01C

IP67 RUBBER BRACELET PROBES

PRODUCT FAMILY 30GB07

Probe with bracelet, PTC sensor, TPE flat cable, 6x6x15 mm capsule. Suitable for temperature sensing in laboratory equipment and machinery, in refrigeration and air conditioning applications, in air quality control applications, in heating applications, in the food field and in the industrial field.



TECHNICAL DATA

| | |
|----------------------------|--|
| TEMPERATURE RANGE | (-50 +120)°C |
| MODEL | Bracelet |
| SENSOR | PTC |
| CAPSULE | 6x6x15 mm |
| CABLE | TPE flat |
| TERMINITIONS | Tin-plated, tips, connectors (other terminations available on request) |
| RESPONSE TIME | 10 s in non-static liquid at 63.2% (depends on configuration) |
| IDENTIFICATION | Laser on cable, label (customizable) |
| DECLARATIONS OF CONFORMITY | CE MARKING, CONFLICT MINERALS, REACH, REACH, ROHS |

AGB03C

PROBES WITH STANDARD METAL CAPSULE

PRODUCT FAMILY 15CA05

Probe with steel capsule, PTC sensor, in silicone cable, diameter 6x40 mm capsule. Suitable for temperature sensing in refrigeration and air conditioning applications, in air quality control applications, in heating applications and in the food field.



TECHNICAL DATA

| | |
|----------------------------|--|
| TEMPERATURE RANGE | (-50 +150)°C |
| MODEL | Steel capsule |
| SENSOR | PTC |
| CAPSULE | Diameter 6x40 mm |
| CABLE | Silicone |
| TERMINITIONS | Tin-plated, tips, connectors (other terminations available on request) |
| RESPONSE TIME | 10 s in non-static liquid at 63.2% (depends on configuration) |
| IDENTIFICATION | Laser on cable, label (customizable) |
| DECLARATIONS OF CONFORMITY | CE MARKING, CONFLICT MINERALS, MOCA, REACH, REACH, ROHS |

GEI00C

IP55 COPPER PLATE BRACELET PROBES

PRODUCT FAMILY 30GB15

Probe with bracelet, PT100 sensor, TPE flat cable, 6x6x15 mm + copper plate capsule. Suitable for temperature sensing in laboratory equipment and machinery, in refrigeration and air conditioning applications and in heating applications.



TECHNICAL DATA

| | |
|----------------------------|--|
| TEMPERATURE RANGE | (-50 +120)°C |
| MODEL | Bracelet |
| SENSOR | PT100 |
| CAPSULE | 6x6x15 mm + copper plate |
| CABLE | TPE flat |
| TERMINITIONS | Tin-plated, tips, connectors (other terminations available on request) |
| RESPONSE TIME | 10 s in non-static liquid at 63.2% (depends on configuration) |
| IDENTIFICATION | Laser on cable, label (customizable) |
| DECLARATIONS OF CONFORMITY | CE MARKING, CONFLICT MINERALS, REACH, REACH, ROHS |

IDI00C

IP67 COPPER CAPSULE BRACELET PROBES

PRODUCT FAMILY 30GB10

Probe with bracelet, PT1000 sensor, TPE round cable, 6x6x15 mm + copper capsule. Suitable for temperature sensing in refrigeration and air conditioning applications and in heating applications.



TECHNICAL DATA

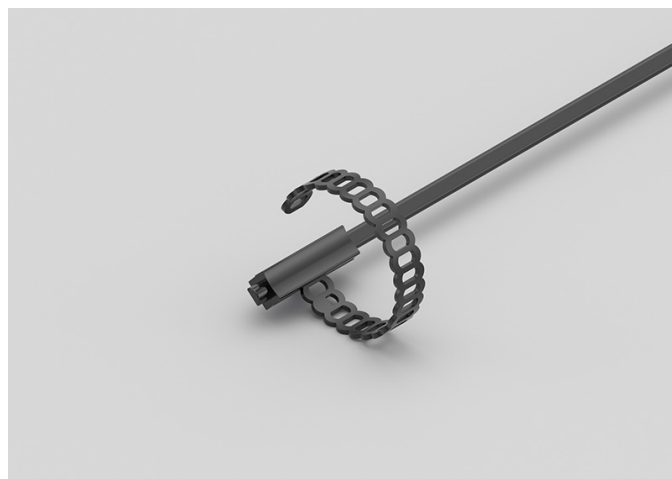
| | |
|----------------------------|--|
| TEMPERATURE RANGE | (-50 +110)°C |
| MODEL | Bracelet |
| SENSOR | PT1000 |
| CAPSULE | 6x6x15 mm + copper |
| CABLE | TPE round |
| TERMINITIONS | Tin-plated, tips, connectors (other terminations available on request) |
| RESPONSE TIME | 10 s in non-static liquid at 63.2% (depends on configuration) |
| IDENTIFICATION | Laser on cable, label (customizable) |
| DECLARATIONS OF CONFORMITY | CE MARKING, CONFLICT MINERALS, REACH, REACH, ROHS |

IEI00C

IP67 RUBBER BRACELET PROBES

PRODUCT FAMILY 30GB07

Probe with bracelet, PT1000 sensor, TPE flat cable, 6x6x15 mm capsule. Suitable for temperature sensing in laboratory equipment and machinery, in refrigeration and air conditioning applications, in air quality control applications and in heating applications.



TECHNICAL DATA

| | |
|----------------------------|--|
| TEMPERATURE RANGE | (-50 +120)°C |
| MODEL | Bracelet |
| SENSOR | PT1000 |
| CAPSULE | 6x6x15 mm |
| CABLE | TPE flat |
| TERMINITIONS | Tin-plated, tips, connectors (other terminations available on request) |
| RESPONSE TIME | 10 s in non-static liquid at 63.2% (depends on configuration) |
| IDENTIFICATION | Laser on cable, label (customizable) |
| DECLARATIONS OF CONFORMITY | CE MARKING, CONFLICT MINERALS, REACH, REACH, ROHS |

IEI03C

IP55 COPPER PLATE BRACELET PROBES

PRODUCT FAMILY 30GB15

Probe with bracelet, PT1000 sensor, TPE flat cable, 6x6x15 mm + copper plate capsule. Suitable for temperature sensing in refrigeration and air conditioning applications and in heating applications.



TECHNICAL DATA

| | |
|----------------------------|--|
| TEMPERATURE RANGE | (-50 +120)°C |
| MODEL | Bracelet |
| SENSOR | PT1000 |
| CAPSULE | 6x6x15 mm + copper plate |
| CABLE | TPE flat |
| TERMINITIONS | Tin-plated, tips, connectors (other terminations available on request) |
| RESPONSE TIME | 10 s in non-static liquid at 63.2% (depends on configuration) |
| IDENTIFICATION | Laser on cable, label (customizable) |
| DECLARATIONS OF CONFORMITY | CE MARKING, CONFLICT MINERALS, REACH, REACH, ROHS |

IVB03C

PROBES WITH STANDARD METAL CAPSULE

PRODUCT FAMILY 15CA05

Probe with steel capsule, PT1000 sensor, in glass fibre cable, diameter 6x40 mm capsule. Suitable for temperature sensing in refrigeration and air conditioning applications and in heating applications.



TECHNICAL DATA

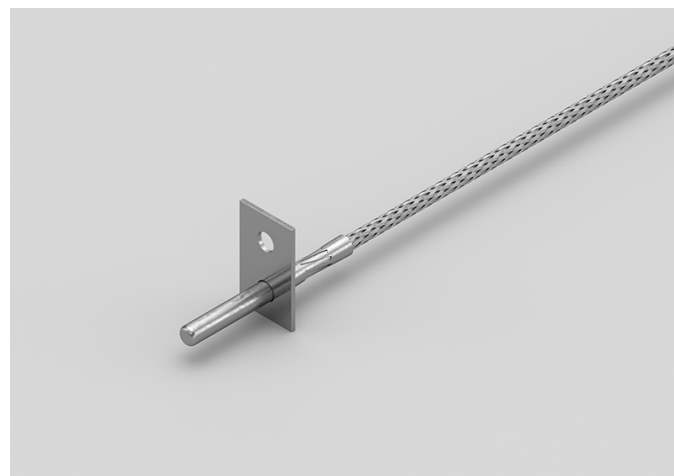
| | |
|----------------------------|--|
| TEMPERATURE RANGE | (0 +350)°C |
| MODEL | Steel capsule |
| SENSOR | PT1000 |
| CAPSULE | Diameter 6x40 mm |
| CABLE | Glass fibre |
| TERMINITIONS | Tin-plated, tips, connectors (other terminations available on request) |
| RESPONSE TIME | 10 s in non-static liquid at 63.2% (depends on configuration) |
| IDENTIFICATION | Laser on cable, label (customizable) |
| DECLARATIONS OF CONFORMITY | CE MARKING, CONFLICT MINERALS, MOCA, REACH, REACH, ROHS |

IVU00C

METAL CAPSULE PROBES WITH FLANGE

PRODUCT FAMILY 15CA25

Contact probe with PT1000 sensor, in glass fibre cable, diameter 4x40 mm capsule. Suitable for temperature sensing in refrigeration and air conditioning applications, in air quality control applications, in heating applications, in the field of renewable energy and in the food field.



TECHNICAL DATA

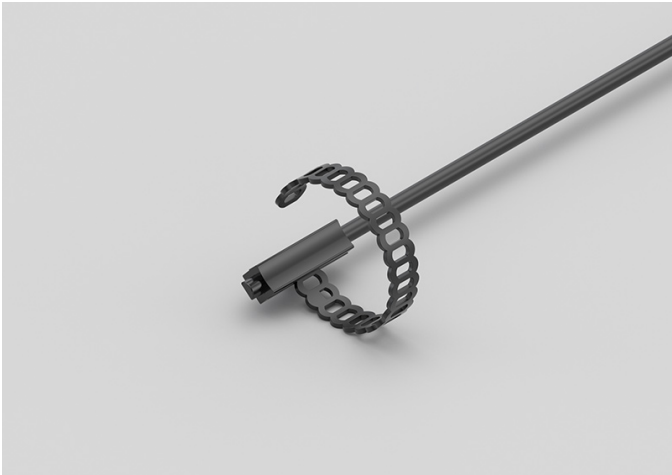
| | |
|----------------------------|--|
| TEMPERATURE RANGE | (0 +350)°C |
| MODEL | Contact |
| SENSOR | PT1000 |
| CAPSULE | Diameter 4x40 mm |
| CABLE | Glass fibre |
| TERMINITIONS | Tin-plated, tips, connectors (other terminations available on request) |
| RESPONSE TIME | 10 s in non-static liquid at 63.2% (depends on configuration) |
| IDENTIFICATION | Laser on cable, label (customizable) |
| DECLARATIONS OF CONFORMITY | CE MARKING, CONFLICT MINERALS, REACH, REACH, ROHS |

NDI00C

IP68 RUBBER BRACELET PROBES

PRODUCT FAMILY 30GB05

Probe with bracelet, NTC sensor, TPE round cable, 6x6x15 mm capsule. Suitable for temperature sensing in refrigeration and air conditioning applications, in heating applications and in the field of renewable energy.



TECHNICAL DATA

| | |
|----------------------------|--|
| TEMPERATURE RANGE | (-50 +110)°C |
| MODEL | Bracelet |
| SENSOR | NTC |
| CAPSULE | 6x6x15 mm |
| CABLE | TPE round |
| TERMINITIONS | Tin-plated, tips, connectors (other terminations available on request) |
| RESPONSE TIME | 10 s in non-static liquid at 63.2% (depends on configuration) |
| IDENTIFICATION | Laser on cable, label (customizable) |
| DECLARATIONS OF CONFORMITY | CE MARKING, CONFLICT MINERALS, REACH, REACH, ROHS |

NDI01C

IP67 COPPER CAPSULE
BRACELET PROBES

PRODUCT FAMILY 30GB10

Probe with bracelet, NTC sensor, TPE round cable, 6x6x15 mm + copper capsule. Suitable for temperature sensing in refrigeration and air conditioning applications, in heating applications and in the field of renewable energy.



TECHNICAL DATA

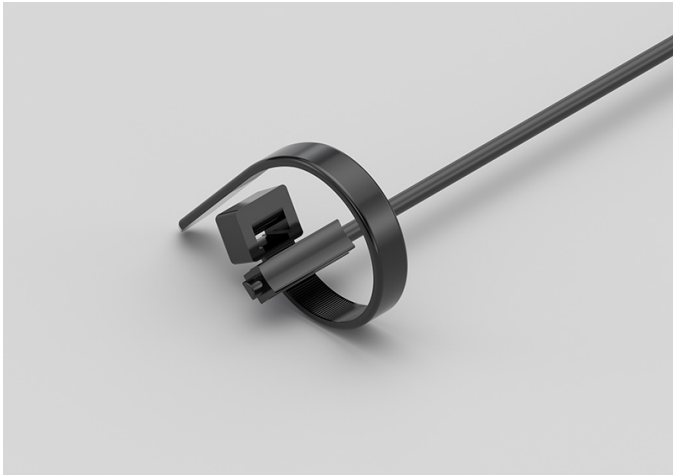
| | |
|----------------------------|--|
| TEMPERATURE RANGE | (-50 +110)°C |
| MODEL | Bracelet |
| SENSOR | NTC |
| CAPSULE | 6x6x15 mm + copper |
| CABLE | TPE round |
| TERMINITIONS | Tin-plated, tips, connectors (other terminations available on request) |
| RESPONSE TIME | 10 s in non-static liquid at 63.2% (depends on configuration) |
| IDENTIFICATION | Laser on cable, label (customizable) |
| DECLARATIONS OF CONFORMITY | CE MARKING, CONFLICT MINERALS, REACH, REACH, ROHS |

NDI06C

IP68 RUBBER BRACELET
PROBE WITH METAL
CLAMP

PRODUCT FAMILY 30GB06

Probe with bracelet, NTC sensor, TPE round cable, 6x6x15 mm capsule. Suitable for temperature sensing in refrigeration and air conditioning applications, in heating applications and in the field of renewable energy.



TECHNICAL DATA

| | |
|----------------------------|--|
| TEMPERATURE RANGE | (-50 +110)°C |
| MODEL | Bracelet |
| SENSOR | NTC |
| CAPSULE | 6x6x15 mm |
| CABLE | TPE round |
| TERMINITIONS | Tin-plated, tips, connectors (other terminations available on request) |
| RESPONSE TIME | 10 s in non-static liquid at 63.2% (depends on configuration) |
| IDENTIFICATION | Laser on cable, label (customizable) |
| DECLARATIONS OF CONFORMITY | CE MARKING, CONFLICT MINERALS, REACH, REACH, ROHS |

NEH00C

IP67 RUBBER PROBES

Ø6X20 MM STEEL CAPSULE

PRODUCT FAMILY 30GC12

IP67 probe with NTC sensor, TPE flat cable, diameter 6x20 mm capsule. Suitable for temperature sensing in refrigeration and air conditioning applications, in air quality control applications, in heating applications and in the food field.



TECHNICAL DATA

| | |
|----------------------------|--|
| TEMPERATURE RANGE | (-50 +120)°C |
| MODEL | IP67 |
| SENSOR | NTC |
| CAPSULE | Diameter 6x20 mm |
| CABLE | TPE flat |
| TERMINITIONS | Tin-plated, tips, connectors (other terminations available on request) |
| RESPONSE TIME | 10 s in non-static liquid at 63.2% (depends on configuration) |
| IDENTIFICATION | Laser on cable, label (customizable) |
| DECLARATIONS OF CONFORMITY | CE MARKING, CONFLICT MINERALS, REACH, REACH, ROHS |

NEI01C

IP55 COPPER PLATE BRACELET PROBES

PRODUCT FAMILY 30GB15

Probe with bracelet, NTC sensor, TPE flat cable, 6x6x15 mm + copper plate capsule. Suitable for temperature sensing in refrigeration and air conditioning applications, in air quality control applications, in heating applications and in the field of renewable energy.



TECHNICAL DATA

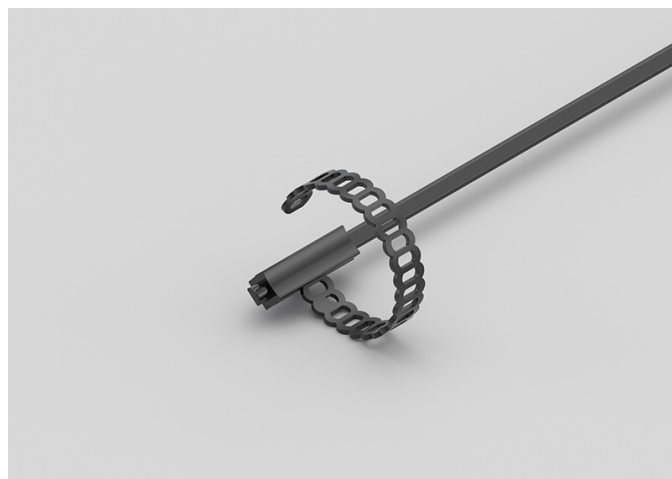
| | |
|----------------------------|--|
| TEMPERATURE RANGE | (-50 +120)°C |
| MODEL | Bracelet |
| SENSOR | NTC |
| CAPSULE | 6x6x15 mm + copper plate |
| CABLE | TPE flat |
| TERMINITIONS | Tin-plated, tips, connectors (other terminations available on request) |
| RESPONSE TIME | 10 s in non-static liquid at 63.2% (depends on configuration) |
| IDENTIFICATION | Laser on cable, label (customizable) |
| DECLARATIONS OF CONFORMITY | CE MARKING, CONFLICT MINERALS, REACH, REACH, ROHS |

NEI02C

IP67 RUBBER BRACELET PROBES

PRODUCT FAMILY 30GB07

Probe with bracelet, NTC sensor, TPE flat cable, 6x6x15 mm capsule. Suitable for temperature sensing in laboratory equipment and machinery, in refrigeration and air conditioning applications, in air quality control applications and in heating applications.



TECHNICAL DATA

| | |
|----------------------------|--|
| TEMPERATURE RANGE | (-50 +120)°C |
| MODEL | Bracelet |
| SENSOR | NTC |
| CAPSULE | 6x6x15 mm |
| CABLE | TPE flat |
| TERMINITIONS | Tin-plated, tips, connectors (other terminations available on request) |
| RESPONSE TIME | 10 s in non-static liquid at 63.2% (depends on configuration) |
| IDENTIFICATION | Laser on cable, label (customizable) |
| DECLARATIONS OF CONFORMITY | CE MARKING, CONFLICT MINERALS, REACH, REACH, ROHS |

NEK00C

IP67 RUBBER PROBES

Ø5X20 MM RUBBER CAPSULE

PRODUCT FAMILY 30GC11

IP67 probe with NTC sensor, TPE flat cable, diameter 5x20 mm capsule. Suitable for temperature sensing in refrigeration and air conditioning applications, in air quality control applications, in heating applications and in the food field.



TECHNICAL DATA

| | |
|----------------------------|--|
| TEMPERATURE RANGE | (-50 +120)°C |
| MODEL | IP67 |
| SENSOR | NTC |
| CAPSULE | Diameter 5x20 mm |
| CABLE | TPE flat |
| TERMINITIONS | Tin-plated, tips, connectors (other terminations available on request) |
| RESPONSE TIME | 10 s in non-static liquid at 63.2% (depends on configuration) |
| IDENTIFICATION | Laser on cable, label (customizable) |
| DECLARATIONS OF CONFORMITY | CE MARKING, CONFLICT MINERALS, REACH, REACH, ROHS |

RVU00C

PROBES WITH FAST METAL CAPSULE

PRODUCT FAMILY 15CA10

Probe with steel capsule, NTC sensor, in glass fibre cable, diameter 4x40 mm capsule. Suitable for temperature sensing in heating applications and in the food field.



TECHNICAL DATA

| | |
|----------------------------|--|
| TEMPERATURE RANGE | (0 +300)°C |
| MODEL | Steel capsule |
| SENSOR | NTC |
| CAPSULE | Diameter 4x40 mm |
| CABLE | Glass fibre |
| TERMINITIONS | Tin-plated, tips, connectors (other terminations available on request) |
| RESPONSE TIME | 10 s in non-static liquid at 63.2% (depends on configuration) |
| IDENTIFICATION | Laser on cable, label (customizable) |
| DECLARATIONS OF CONFORMITY | CE MARKING, CONFLICT MINERALS, MOCA, REACH, REACH, ROHS |

ADI02C

IP67 COPPER CAPSULE BRACELET PROBES WITH METAL CLAMP

PRODUCT FAMILY 30GB11

Probe with bracelet, PTC sensor, TPE round cable, 6x6x15 mm + copper capsule. Suitable for temperature sensing in heating applications, in the field of renewable energy and in the food field.



TECHNICAL DATA

| | |
|----------------------------|--|
| TEMPERATURE RANGE | (-50 +110)°C |
| MODEL | Bracelet |
| SENSOR | PTC |
| CAPSULE | 6x6x15 mm + copper |
| CABLE | TPE round |
| TERMINITIONS | Tin-plated, tips, connectors (other terminations available on request) |
| RESPONSE TIME | 10 s in non-static liquid at 63.2% (depends on configuration) |
| IDENTIFICATION | Laser on cable, label (customizable) |
| DECLARATIONS OF CONFORMITY | CE MARKING, CONFLICT MINERALS, REACH, REACH, ROHS |

ADI03C

IP67 COPPER CAPSULE BRACELET PROBES

PRODUCT FAMILY 30GB10

Probe with bracelet, PTC sensor, TPE round cable, 6x6x15 mm + copper capsule. Suitable for temperature sensing in heating applications, in the field of renewable energy and in the food field.



TECHNICAL DATA

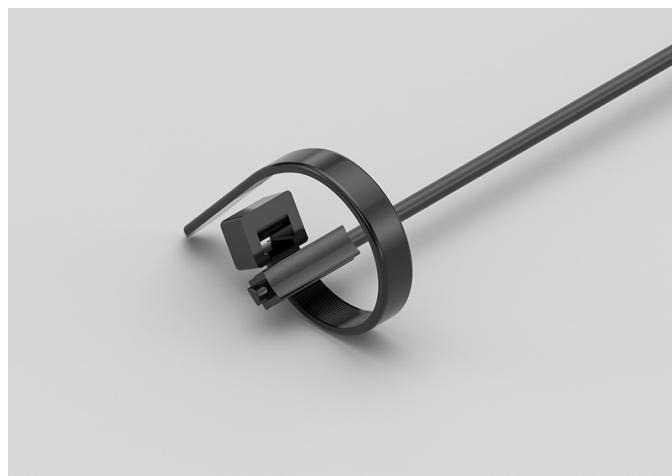
| | |
|----------------------------|--|
| TEMPERATURE RANGE | (-50 +110)°C |
| MODEL | Bracelet |
| SENSOR | PTC |
| CAPSULE | 6x6x15 mm + copper |
| CABLE | TPE round |
| TERMINITIONS | Tin-plated, tips, connectors (other terminations available on request) |
| RESPONSE TIME | 10 s in non-static liquid at 63.2% (depends on configuration) |
| IDENTIFICATION | Laser on cable, label (customizable) |
| DECLARATIONS OF CONFORMITY | CE MARKING, CONFLICT MINERALS, REACH, REACH, ROHS |

ADI04C

IP68 RUBBER BRACELET PROBE WITH METAL CLAMP

PRODUCT FAMILY 30GB06

Probe with bracelet, PTC sensor, TPE round cable, 6x6x15 mm capsule. Suitable for temperature sensing in laboratory equipment and machinery, in heating applications, in the field of renewable energy and in the food field.



TECHNICAL DATA

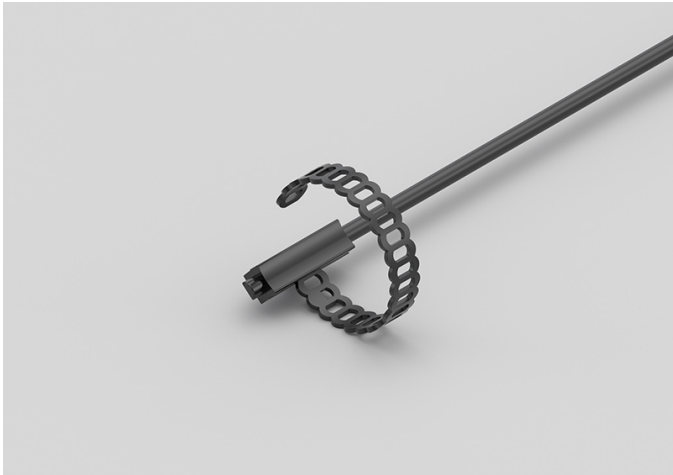
| | |
|----------------------------|--|
| TEMPERATURE RANGE | (-50 +110)°C |
| MODEL | Bracelet |
| SENSOR | PTC |
| CAPSULE | 6x6x15 mm |
| CABLE | TPE round |
| TERMINITIONS | Tin-plated, tips, connectors (other terminations available on request) |
| RESPONSE TIME | 10 s in non-static liquid at 63.2% (depends on configuration) |
| IDENTIFICATION | Laser on cable, label (customizable) |
| DECLARATIONS OF CONFORMITY | CE MARKING, CONFLICT MINERALS, REACH, REACH, ROHS |

ADI05C

IP68 RUBBER BRACELET PROBES

PRODUCT FAMILY 30GB05

Probe with bracelet, PTC sensor, TPE round cable, 6x6x15 mm capsule. Suitable for temperature sensing in laboratory equipment and machinery, in heating applications, in the field of renewable energy and in the food field.



TECHNICAL DATA

| | |
|----------------------------|--|
| TEMPERATURE RANGE | (-50 +110)°C |
| MODEL | Bracelet |
| SENSOR | PTC |
| CAPSULE | 6x6x15 mm |
| CABLE | TPE round |
| TERMINITIONS | Tin-plated, tips, connectors (other terminations available on request) |
| RESPONSE TIME | 10 s in non-static liquid at 63.2% (depends on configuration) |
| IDENTIFICATION | Laser on cable, label (customizable) |
| DECLARATIONS OF CONFORMITY | CE MARKING, CONFLICT MINERALS, REACH, REACH, ROHS |

AEE00C

IP67 RUBBER PROBES

6X6X15 MM RUBBER CAPSULE

PRODUCT FAMILY 30GC10

IP67 probe with PTC sensor, TPE flat cable, 1,5x5x6 mm capsule. Suitable for temperature sensing in laboratory equipment and machinery, in refrigeration and air conditioning applications, in air quality control applications and in the food field.



TECHNICAL DATA

| | |
|----------------------------|--|
| TEMPERATURE RANGE | (-50 +120)°C |
| MODEL | IP67 |
| SENSOR | PTC |
| CAPSULE | 1,5x5x6 mm |
| CABLE | TPE flat |
| TERMINITIONS | Tin-plated, tips, connectors (other terminations available on request) |
| RESPONSE TIME | 10 s in non-static liquid at 63.2% (depends on configuration) |
| IDENTIFICATION | Laser on cable, label (customizable) |
| DECLARATIONS OF CONFORMITY | CE MARKING, CONFLICT MINERALS, REACH, REACH, ROHS |

AEH03C

IP67 RUBBER PROBES Ø6X40..50/60 MM STEEL CAPSULE

PRODUCT FAMILY 30GC13

IP67 probe with PTC sensor, TPE flat cable, diameter 6x50 mm capsule. Suitable for temperature sensing in refrigeration and air conditioning applications, in air quality control applications, in heating applications and in the food field.



TECHNICAL DATA

| | |
|----------------------------|--|
| TEMPERATURE RANGE | (-50 +120)°C |
| MODEL | IP67 |
| SENSOR | PTC |
| CAPSULE | Diameter 6x50 mm |
| CABLE | TPE flat |
| TERMINITIONS | Tin-plated, tips, connectors (other terminations available on request) |
| RESPONSE TIME | 10 s in non-static liquid at 63.2% (depends on configuration) |
| IDENTIFICATION | Laser on cable, label (customizable) |
| DECLARATIONS OF CONFORMITY | CE MARKING, CONFLICT MINERALS, REACH, REACH, ROHS |

AEH04C

IP67 RUBBER PROBES

Ø6X20 MM STEEL CAPSULE

PRODUCT FAMILY 30GC12

IP67 probe with PTC sensor, TPE flat cable, diameter 6x20 mm capsule. Suitable for temperature sensing in refrigeration and air conditioning applications, in air quality control applications, in heating applications and in the food field.



TECHNICAL DATA

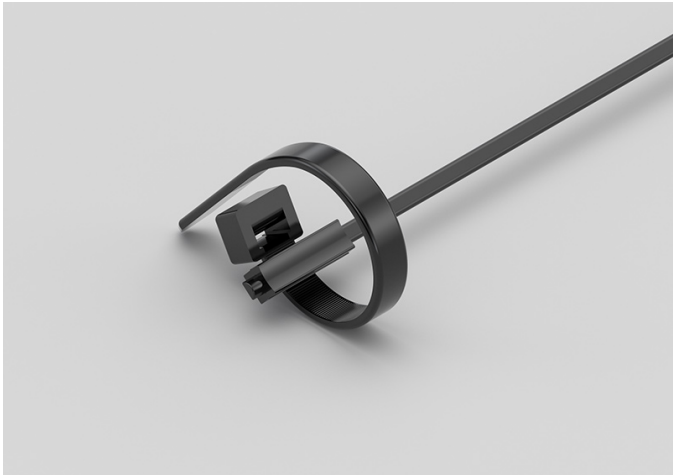
| | |
|----------------------------|--|
| TEMPERATURE RANGE | (-50 +120)°C |
| MODEL | IP67 |
| SENSOR | PTC |
| CAPSULE | Diameter 6x20 mm |
| CABLE | TPE flat |
| TERMINITIONS | Tin-plated, tips, connectors (other terminations available on request) |
| RESPONSE TIME | 10 s in non-static liquid at 63.2% (depends on configuration) |
| IDENTIFICATION | Laser on cable, label (customizable) |
| DECLARATIONS OF CONFORMITY | CE MARKING, CONFLICT MINERALS, REACH, REACH, ROHS |

AEI03C

IP67 RUBBER BRACELET PROBES WITH METAL CLAMP

PRODUCT FAMILY 30GB08

Probe with bracelet, PTC sensor, TPE flat cable, 6x6x15 mm capsule. Suitable for temperature sensing in laboratory equipment and machinery, in heating applications and in the food field.



TECHNICAL DATA

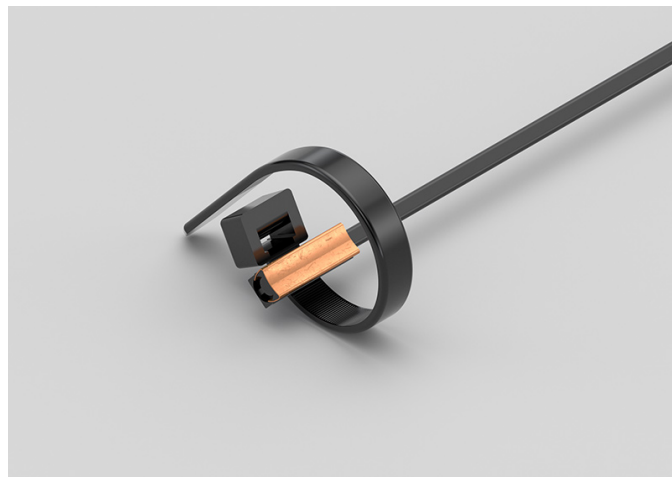
| | |
|----------------------------|--|
| TEMPERATURE RANGE | (-50 +120)°C |
| MODEL | Bracelet |
| SENSOR | PTC |
| CAPSULE | 6x6x15 mm |
| CABLE | TPE flat |
| TERMINITIONS | Tin-plated, tips, connectors (other terminations available on request) |
| RESPONSE TIME | 10 s in non-static liquid at 63.2% (depends on configuration) |
| IDENTIFICATION | Laser on cable, label (customizable) |
| DECLARATIONS OF CONFORMITY | CE MARKING, CONFLICT MINERALS, REACH, REACH, ROHS |

AEI04C

IP55 COPPER PLATE BRACELET PROBES WITH METAL CLAMP

PRODUCT FAMILY 30GB16

Probe with bracelet, PTC sensor, TPE flat cable, 6x6x15 mm + copper plate capsule. Suitable for temperature sensing in laboratory equipment and machinery, in heating applications and in the food field.



TECHNICAL DATA

| | |
|----------------------------|--|
| TEMPERATURE RANGE | (-50 +120)°C |
| MODEL | Bracelet |
| SENSOR | PTC |
| CAPSULE | 6x6x15 mm + copper plate |
| CABLE | TPE flat |
| TERMINITIONS | Tin-plated, tips, connectors (other terminations available on request) |
| RESPONSE TIME | 10 s in non-static liquid at 63.2% (depends on configuration) |
| IDENTIFICATION | Laser on cable, label (customizable) |
| DECLARATIONS OF CONFORMITY | CE MARKING, CONFLICT MINERALS, REACH, REACH, ROHS |

AEK00C

IP67 RUBBER PROBES

Ø5X20 MM RUBBER CAPSULE

PRODUCT FAMILY 30GC11

IP67 probe with PTC sensor, TPE flat cable, diameter 5x20 mm capsule. Suitable for temperature sensing in heating applications and in the food field.



TECHNICAL DATA

| | |
|----------------------------|--|
| TEMPERATURE RANGE | (-50 +120)°C |
| MODEL | IP67 |
| SENSOR | PTC |
| CAPSULE | Diameter 5x20 mm |
| CABLE | TPE flat |
| TERMINITIONS | Tin-plated, tips, connectors (other terminations available on request) |
| RESPONSE TIME | 10 s in non-static liquid at 63.2% (depends on configuration) |
| IDENTIFICATION | Laser on cable, label (customizable) |
| DECLARATIONS OF CONFORMITY | CE MARKING, CONFLICT MINERALS, REACH, REACH, ROHS |

AGB26C

METAL CAPSULE PROBES WITH FLANGE

PRODUCT FAMILY 15CA25

Contact probe with PTC sensor, in silicone cable, diameter 6x40 mm capsule. Suitable for temperature sensing in laboratory equipment and machinery, in refrigeration and air conditioning applications, in heating applications, in the food field and in the industrial field.



TECHNICAL DATA

| | |
|----------------------------|--|
| TEMPERATURE RANGE | (-50 +150)°C |
| MODEL | Contact |
| SENSOR | PTC |
| CAPSULE | Diameter 6x40 mm |
| CABLE | Silicone |
| TERMINITIONS | Tin-plated, tips, connectors (other terminations available on request) |
| RESPONSE TIME | 10 s in non-static liquid at 63.2% (depends on configuration) |
| IDENTIFICATION | Laser on cable, label (customizable) |
| DECLARATIONS OF CONFORMITY | CE MARKING, CONFLICT MINERALS, REACH, REACH, ROHS |

AGB27C

STANDARD EYELET PROBES

PRODUCT FAMILY 15C005

Contact probe with PTC sensor, in silicone cable, diameter 6x40 mm capsule. Suitable for temperature sensing in heating applications and in the food field.



TECHNICAL DATA

| | |
|----------------------------|--|
| TEMPERATURE RANGE | (-50 +150)°C |
| MODEL | Contact |
| SENSOR | PTC |
| CAPSULE | Diameter 6x40 mm |
| CABLE | Silicone |
| TERMINITIONS | Tin-plated, tips, connectors (other terminations available on request) |
| RESPONSE TIME | 10 s in non-static liquid at 63.2% (depends on configuration) |
| IDENTIFICATION | Laser on cable, label (customizable) |
| DECLARATIONS OF CONFORMITY | CE MARKING, CONFLICT MINERALS, REACH, REACH, ROHS |

AGM03C

PROBES WITH WELDED THREADED CONNECTION

PRODUCT FAMILY 15CR05

Probe with connector, PTC sensor, in silicone cable, diameter 4x40 mm capsule. Suitable for temperature sensing in laboratory equipment and machinery, in refrigeration and air conditioning applications, in air quality control applications, in heating applications, in the field of renewable energy and in the food field.



TECHNICAL DATA

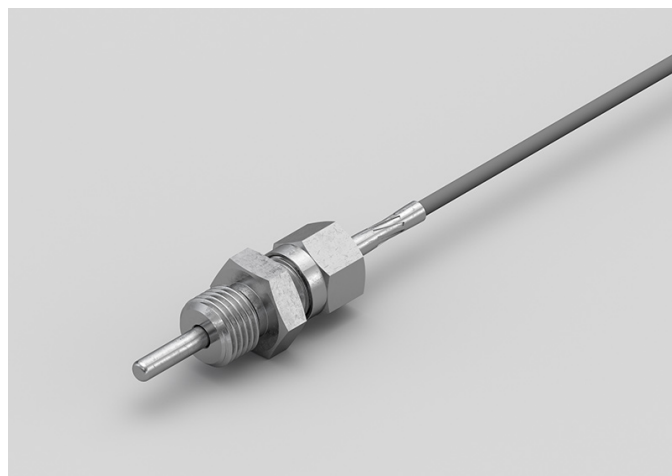
| | |
|----------------------------|--|
| TEMPERATURE RANGE | (-50 +150)°C |
| MODEL | With connector |
| SENSOR | PTC |
| CAPSULE | Diameter 4x40 mm |
| CABLE | Silicone |
| TERMINITIONS | Tin-plated, tips, connectors (other terminations available on request) |
| RESPONSE TIME | 10 s in non-static liquid at 63.2% (depends on configuration) |
| IDENTIFICATION | Laser on cable, label (customizable) |
| DECLARATIONS OF CONFORMITY | CE MARKING, CONFLICT MINERALS, REACH, REACH, ROHS |

AGM04C

PROBES WITH SLIDING THREADED CONNECTION

PRODUCT FAMILY 15CR10

Probe with connector, PTC sensor, in silicone cable, diameter 4x40 mm capsule. Suitable for temperature sensing in laboratory equipment and machinery, in refrigeration and air conditioning applications, in air quality control applications, in heating applications, in the field of renewable energy and in the food field.



TECHNICAL DATA

| | |
|----------------------------|--|
| TEMPERATURE RANGE | (-50 +150)°C |
| MODEL | With connector |
| SENSOR | PTC |
| CAPSULE | Diameter 4x40 mm |
| CABLE | Silicone |
| TERMINITIONS | Tin-plated, tips, connectors (other terminations available on request) |
| RESPONSE TIME | 10 s in non-static liquid at 63.2% (depends on configuration) |
| IDENTIFICATION | Laser on cable, label (customizable) |
| DECLARATIONS OF CONFORMITY | CE MARKING, CONFLICT MINERALS, REACH, REACH, ROHS |

AGR00C

PROBES WITH TAPERED METAL CAPSULE

PRODUCT FAMILY 15CA20

Probe with steel capsule, PTC sensor, in silicone cable, diameter 3X15 mm + diameter 6X40 mm capsule. Suitable for temperature sensing in air quality control applications.



TECHNICAL DATA

| | |
|----------------------------|--|
| TEMPERATURE RANGE | (-50 +150)°C |
| MODEL | Steel capsule |
| SENSOR | PTC |
| CAPSULE | Diameter 3X15 mm + Diameter 6X40 mm |
| CABLE | Silicone |
| TERMINITIONS | Tin-plated, tips, connectors (other terminations available on request) |
| RESPONSE TIME | 10 s in non-static liquid at 63.2% (depends on configuration) |
| IDENTIFICATION | Laser on cable, label (customizable) |
| DECLARATIONS OF CONFORMITY | CE MARKING, CONFLICT MINERALS, REACH, REACH, ROHS |

AGU01C

STANDARD EYELET PROBES

PRODUCT FAMILY 15C005

Contact probe with PTC sensor, in silicone cable, diameter 4x40 mm capsule. Suitable for temperature sensing in air quality control applications.



TECHNICAL DATA

| | |
|----------------------------|--|
| TEMPERATURE RANGE | (-50 +150)°C |
| MODEL | Contact |
| SENSOR | PTC |
| CAPSULE | Diameter 4x40 mm |
| CABLE | Silicone |
| TERMINITIONS | Tin-plated, tips, connectors (other terminations available on request) |
| RESPONSE TIME | 10 s in non-static liquid at 63.2% (depends on configuration) |
| IDENTIFICATION | Laser on cable, label (customizable) |
| DECLARATIONS OF CONFORMITY | CE MARKING, CONFLICT MINERALS, REACH, REACH, ROHS |

AGU02C

METAL CAPSULE PROBES WITH FLANGE

PRODUCT FAMILY 15CA25

Contact probe with PTC sensor, in silicone cable, diameter 4x40 mm capsule. Suitable for temperature sensing in refrigeration and air conditioning applications, in air quality control applications, in heating applications, in the field of renewable energy and in the food field.



TECHNICAL DATA

| | |
|----------------------------|--|
| TEMPERATURE RANGE | (-50 +150)°C |
| MODEL | Contact |
| SENSOR | PTC |
| CAPSULE | Diameter 4x40 mm |
| CABLE | Silicone |
| TERMINITIONS | Tin-plated, tips, connectors (other terminations available on request) |
| RESPONSE TIME | 10 s in non-static liquid at 63.2% (depends on configuration) |
| IDENTIFICATION | Laser on cable, label (customizable) |
| DECLARATIONS OF CONFORMITY | CE MARKING, CONFLICT MINERALS, REACH, REACH, ROHS |

AGU04C

PROBES WITH FAST METAL CAPSULE

PRODUCT FAMILY 15CA10

Probe with steel capsule, PTC sensor, in silicone cable, diameter 4x40 mm capsule. Suitable for temperature sensing in refrigeration and air conditioning applications, in air quality control applications, in heating applications, in the field of renewable energy and in the food field.



TECHNICAL DATA

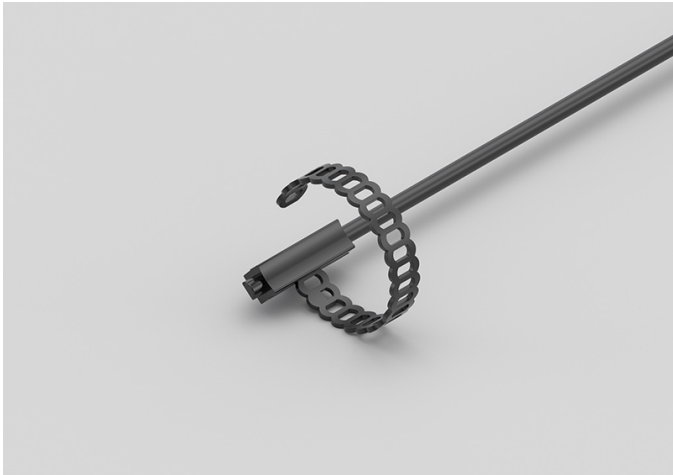
| | |
|----------------------------|--|
| TEMPERATURE RANGE | (-50 +150)°C |
| MODEL | Steel capsule |
| SENSOR | PTC |
| CAPSULE | Diameter 4x40 mm |
| CABLE | Silicone |
| TERMINITIONS | Tin-plated, tips, connectors (other terminations available on request) |
| RESPONSE TIME | 10 s in non-static liquid at 63.2% (depends on configuration) |
| IDENTIFICATION | Laser on cable, label (customizable) |
| DECLARATIONS OF CONFORMITY | CE MARKING, CONFLICT MINERALS, MOCA, REACH, REACH, ROHS |

GDI03C

IP68 RUBBER BRACELET PROBES

PRODUCT FAMILY 30GB05

Probe with bracelet, PT100 sensor, TPE round cable, 6x6x15 mm capsule. Suitable for temperature sensing in laboratory equipment and machinery, in heating applications and in the food field.



TECHNICAL DATA

| | |
|----------------------------|--|
| TEMPERATURE RANGE | (-50 +110)°C |
| MODEL | Bracelet |
| SENSOR | PT100 |
| CAPSULE | 6x6x15 mm |
| CABLE | TPE round |
| TERMINITIONS | Tin-plated, tips, connectors (other terminations available on request) |
| RESPONSE TIME | 10 s in non-static liquid at 63.2% (depends on configuration) |
| IDENTIFICATION | Laser on cable, label (customizable) |
| DECLARATIONS OF CONFORMITY | CE MARKING, CONFLICT MINERALS, REACH, REACH, ROHS |

GDI04C

IP67 COPPER CAPSULE
BRACELET PROBES WITH
METAL CLAMP

PRODUCT FAMILY 30GB11

Probe with bracelet, PT100 sensor, TPE round cable, 6x6x15 mm + copper capsule. Suitable for temperature sensing in refrigeration and air conditioning applications, in air quality control applications, in the field of renewable energy and in the food field.



TECHNICAL DATA

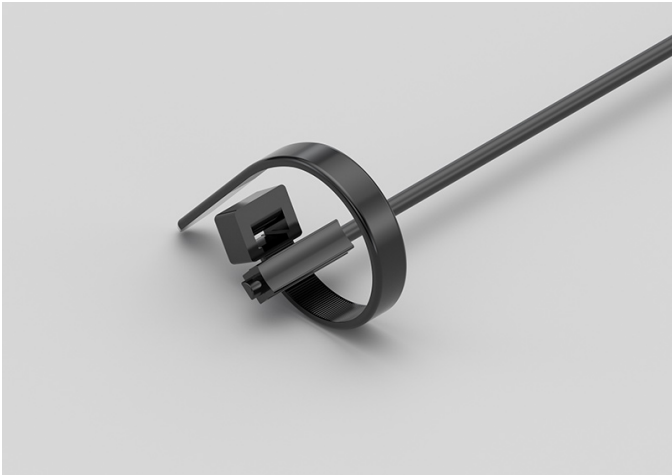
| | |
|----------------------------|--|
| TEMPERATURE RANGE | (-50 +110)°C |
| MODEL | Bracelet |
| SENSOR | PT100 |
| CAPSULE | 6x6x15 mm + copper |
| CABLE | TPE round |
| TERMINITIONS | Tin-plated, tips, connectors (other terminations available on request) |
| RESPONSE TIME | 10 s in non-static liquid at 63.2% (depends on configuration) |
| IDENTIFICATION | Laser on cable, label (customizable) |
| DECLARATIONS OF CONFORMITY | CE MARKING, CONFLICT MINERALS, REACH, REACH, ROHS |

GDI05C

IP68 RUBBER BRACELET
PROBE WITH METAL
CLAMP

PRODUCT FAMILY 30GB06

Probe with bracelet, PT100 sensor, TPE round cable, 6x6x15 mm capsule. Suitable for temperature sensing in refrigeration and air conditioning applications, in air quality control applications, in the field of renewable energy and in the food field.



TECHNICAL DATA

| | |
|----------------------------|--|
| TEMPERATURE RANGE | (-50 +110)°C |
| MODEL | Bracelet |
| SENSOR | PT100 |
| CAPSULE | 6x6x15 mm |
| CABLE | TPE round |
| TERMINITIONS | Tin-plated, tips, connectors (other terminations available on request) |
| RESPONSE TIME | 10 s in non-static liquid at 63.2% (depends on configuration) |
| IDENTIFICATION | Laser on cable, label (customizable) |
| DECLARATIONS OF CONFORMITY | CE MARKING, CONFLICT MINERALS, REACH, REACH, ROHS |

GDI06C

IP67 COPPER CAPSULE
BRACELET PROBES

PRODUCT FAMILY 30GB10

Probe with bracelet, PT100 sensor, TPE round cable, 6x6x15 mm + copper capsule. Suitable for temperature sensing in refrigeration and air conditioning applications, in air quality control applications, in the field of renewable energy and in the food field.



TECHNICAL DATA

| | |
|----------------------------|--|
| TEMPERATURE RANGE | (-50 +110)°C |
| MODEL | Bracelet |
| SENSOR | PT100 |
| CAPSULE | 6x6x15 mm + copper |
| CABLE | TPE round |
| TERMINITIONS | Tin-plated, tips, connectors (other terminations available on request) |
| RESPONSE TIME | 10 s in non-static liquid at 63.2% (depends on configuration) |
| IDENTIFICATION | Laser on cable, label (customizable) |
| DECLARATIONS OF CONFORMITY | CE MARKING, CONFLICT MINERALS, REACH, REACH, ROHS |

GEE00C

IP67 RUBBER PROBES

6X6X15 MM RUBBER CAPSULE

PRODUCT FAMILY 30GC10

IP67 probe with PT100 sensor, TPE flat cable, 1,5x5x6 mm capsule. Suitable for temperature sensing in refrigeration and air conditioning applications, in heating applications, in the field of renewable energy, in the food field and in the industrial field.



TECHNICAL DATA

| | |
|----------------------------|--|
| TEMPERATURE RANGE | (-50 +120)°C |
| MODEL | IP67 |
| SENSOR | PT100 |
| CAPSULE | 1,5x5x6 mm |
| CABLE | TPE flat |
| TERMINITIONS | Tin-plated, tips, connectors (other terminations available on request) |
| RESPONSE TIME | 10 s in non-static liquid at 63.2% (depends on configuration) |
| IDENTIFICATION | Laser on cable, label (customizable) |
| DECLARATIONS OF CONFORMITY | CE MARKING, CONFLICT MINERALS, REACH, REACH, ROHS |

GEH00C

IP67 RUBBER PROBES

Ø6X20 MM STEEL CAPSULE

PRODUCT FAMILY 30GC12

IP67 probe with PT100 sensor, TPE flat cable, diameter 6x20 mm capsule. Suitable for temperature sensing in heating applications, in the field of renewable energy and in the food field.



TECHNICAL DATA

| | |
|----------------------------|--|
| TEMPERATURE RANGE | (-50 +120)°C |
| MODEL | IP67 |
| SENSOR | PT100 |
| CAPSULE | Diameter 6x20 mm |
| CABLE | TPE flat |
| TERMINITIONS | Tin-plated, tips, connectors (other terminations available on request) |
| RESPONSE TIME | 10 s in non-static liquid at 63.2% (depends on configuration) |
| IDENTIFICATION | Laser on cable, label (customizable) |
| DECLARATIONS OF CONFORMITY | CE MARKING, CONFLICT MINERALS, REACH, REACH, ROHS |

GEH01C

IP67 RUBBER PROBES
Ø6X40..50/60 MM STEEL
CAPSULE

PRODUCT FAMILY 30GC13

IP67 probe with PT100 sensor, TPE flat cable, diameter 6x50 mm capsule. Suitable for temperature sensing in heating applications, in the field of renewable energy and in the food field.



TECHNICAL DATA

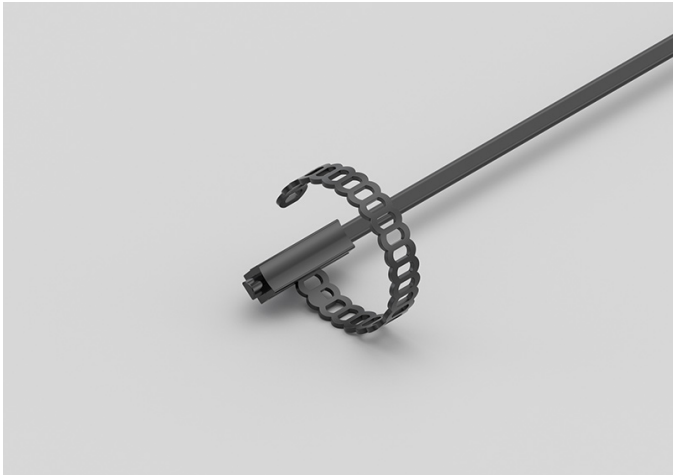
| | |
|----------------------------|--|
| TEMPERATURE RANGE | (-50 +120)°C |
| MODEL | IP67 |
| SENSOR | PT100 |
| CAPSULE | Diameter 6x50 mm |
| CABLE | TPE flat |
| TERMINITIONS | Tin-plated, tips, connectors (other terminations available on request) |
| RESPONSE TIME | 10 s in non-static liquid at 63.2% (depends on configuration) |
| IDENTIFICATION | Laser on cable, label (customizable) |
| DECLARATIONS OF CONFORMITY | CE MARKING, CONFLICT MINERALS, REACH, REACH, ROHS |

GEI01C

IP67 RUBBER BRACELET PROBES

PRODUCT FAMILY 30GB07

Probe with bracelet, PT100 sensor, TPE flat cable, 6x6x15 mm capsule. Suitable for temperature sensing in heating applications, in the field of renewable energy and in the food field.



TECHNICAL DATA

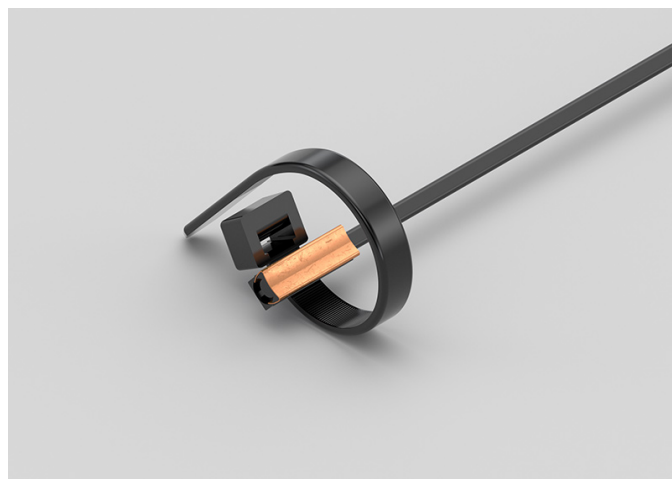
| | |
|----------------------------|--|
| TEMPERATURE RANGE | (-50 +120)°C |
| MODEL | Bracelet |
| SENSOR | PT100 |
| CAPSULE | 6x6x15 mm |
| CABLE | TPE flat |
| TERMINITIONS | Tin-plated, tips, connectors (other terminations available on request) |
| RESPONSE TIME | 10 s in non-static liquid at 63.2% (depends on configuration) |
| IDENTIFICATION | Laser on cable, label (customizable) |
| DECLARATIONS OF CONFORMITY | CE MARKING, CONFLICT MINERALS, REACH, REACH, ROHS |

GEI02C

IP55 COPPER PLATE BRACELET PROBES WITH METAL CLAMP

PRODUCT FAMILY 30GB16

Probe with bracelet, PT100 sensor, TPE flat cable, 6x6x15 mm + copper plate capsule. Suitable for temperature sensing in refrigeration and air conditioning applications, in air quality control applications and in the food field.



TECHNICAL DATA

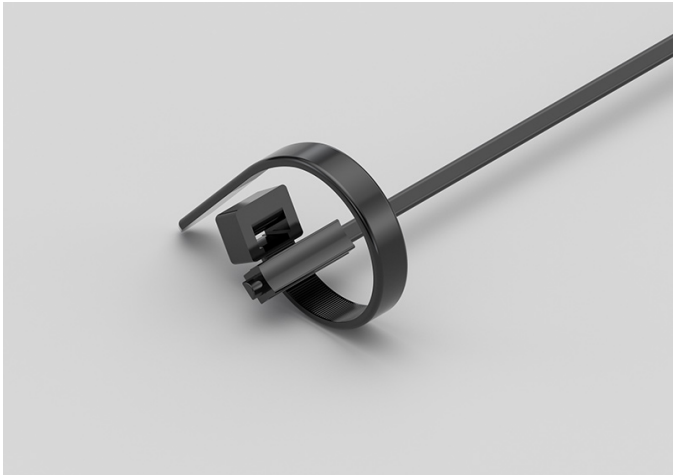
| | |
|----------------------------|--|
| TEMPERATURE RANGE | (-50 +120)°C |
| MODEL | Bracelet |
| SENSOR | PT100 |
| CAPSULE | 6x6x15 mm + copper plate |
| CABLE | TPE flat |
| TERMINITIONS | Tin-plated, tips, connectors (other terminations available on request) |
| RESPONSE TIME | 10 s in non-static liquid at 63.2% (depends on configuration) |
| IDENTIFICATION | Laser on cable, label (customizable) |
| DECLARATIONS OF CONFORMITY | CE MARKING, CONFLICT MINERALS, REACH, REACH, ROHS |

GEI03C

IP67 RUBBER BRACELET PROBES WITH METAL CLAMP

PRODUCT FAMILY 30GB08

Probe with bracelet, PT100 sensor, TPE flat cable, 6x6x15 mm capsule. Suitable for temperature sensing in refrigeration and air conditioning applications, in air quality control applications and in the food field.



TECHNICAL DATA

| | |
|----------------------------|--|
| TEMPERATURE RANGE | (-50 +120)°C |
| MODEL | Bracelet |
| SENSOR | PT100 |
| CAPSULE | 6x6x15 mm |
| CABLE | TPE flat |
| TERMINITIONS | Tin-plated, tips, connectors (other terminations available on request) |
| RESPONSE TIME | 10 s in non-static liquid at 63.2% (depends on configuration) |
| IDENTIFICATION | Laser on cable, label (customizable) |
| DECLARATIONS OF CONFORMITY | CE MARKING, CONFLICT MINERALS, REACH, REACH, ROHS |

GEK00C

IP67 RUBBER PROBES

Ø5X20 MM RUBBER CAPSULE

PRODUCT FAMILY 30GC11

IP67 probe with PT100 sensor, TPE flat cable, diameter 5x20 mm capsule. Suitable for temperature sensing in refrigeration and air conditioning applications, in air quality control applications and in the food field.



TECHNICAL DATA

| | |
|----------------------------|--|
| TEMPERATURE RANGE | (-50 +120)°C |
| MODEL | IP67 |
| SENSOR | PT100 |
| CAPSULE | Diameter 5x20 mm |
| CABLE | TPE flat |
| TERMINITIONS | Tin-plated, tips, connectors (other terminations available on request) |
| RESPONSE TIME | 10 s in non-static liquid at 63.2% (depends on configuration) |
| IDENTIFICATION | Laser on cable, label (customizable) |
| DECLARATIONS OF CONFORMITY | CE MARKING, CONFLICT MINERALS, REACH, REACH, ROHS |

GGB07C

PROBES WITH STANDARD METAL CAPSULE

PRODUCT FAMILY 15CA05

Probe with steel capsule, PT100 sensor, in silicone cable, diameter 6x40 mm capsule. Suitable for temperature sensing in heating applications and in the food field.



TECHNICAL DATA

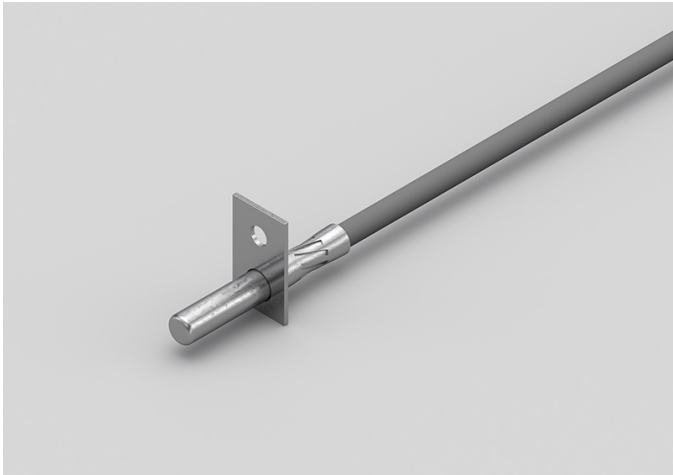
| | |
|----------------------------|--|
| TEMPERATURE RANGE | (-50 +200)°C |
| MODEL | Steel capsule |
| SENSOR | PT100 |
| CAPSULE | Diameter 6x40 mm |
| CABLE | Silicone |
| TERMINITIONS | Tin-plated, tips, connectors (other terminations available on request) |
| RESPONSE TIME | 10 s in non-static liquid at 63.2% (depends on configuration) |
| IDENTIFICATION | Laser on cable, label (customizable) |
| DECLARATIONS OF CONFORMITY | CE MARKING, CONFLICT MINERALS, REACH, REACH, ROHS |

GGB08C

METAL CAPSULE PROBES WITH FLANGE

PRODUCT FAMILY 15CA25

Contact probe with PT100 sensor, in silicone cable, diameter 6x40 mm capsule. Suitable for temperature sensing in heating applications and in the food field.



TECHNICAL DATA

| | |
|----------------------------|--|
| TEMPERATURE RANGE | (-50 +200)°C |
| MODEL | Contact |
| SENSOR | PT100 |
| CAPSULE | Diameter 6x40 mm |
| CABLE | Silicone |
| TERMINITIONS | Tin-plated, tips, connectors (other terminations available on request) |
| RESPONSE TIME | 10 s in non-static liquid at 63.2% (depends on configuration) |
| IDENTIFICATION | Laser on cable, label (customizable) |
| DECLARATIONS OF CONFORMITY | CE MARKING, CONFLICT MINERALS, REACH, REACH, ROHS |

GGB09C

STANDARD EYELET PROBES

PRODUCT FAMILY 15C005

Contact probe with PT100 sensor, in silicone cable, diameter 6x40 mm capsule. Suitable for temperature sensing in heating applications and in the food field.



TECHNICAL DATA

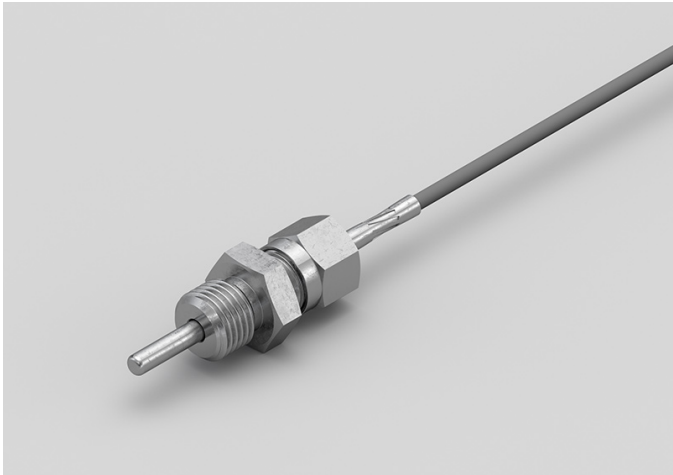
| | |
|----------------------------|--|
| TEMPERATURE RANGE | (-50 +200)°C |
| MODEL | Contact |
| SENSOR | PT100 |
| CAPSULE | Diameter 6x40 mm |
| CABLE | Silicone |
| TERMINITIONS | Tin-plated, tips, connectors (other terminations available on request) |
| RESPONSE TIME | 10 s in non-static liquid at 63.2% (depends on configuration) |
| IDENTIFICATION | Laser on cable, label (customizable) |
| DECLARATIONS OF CONFORMITY | CE MARKING, CONFLICT MINERALS, REACH, REACH, ROHS |

GGM08C

PROBES WITH SLIDING
THREADED CONNECTION

PRODUCT FAMILY 15CR10

Probe with connector, PT100 sensor, in silicone cable, diameter 4x40 mm capsule. Suitable for temperature sensing in heating applications and in the food field.



TECHNICAL DATA

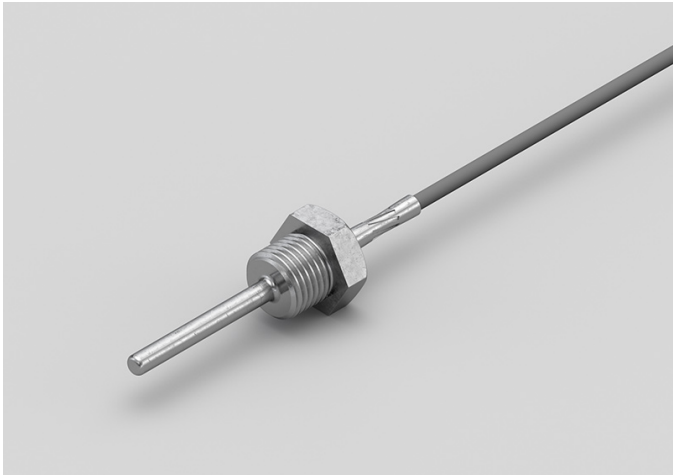
| | |
|----------------------------|--|
| TEMPERATURE RANGE | (-50 +200)°C |
| MODEL | With connector |
| SENSOR | PT100 |
| CAPSULE | Diameter 4x40 mm |
| CABLE | Silicone |
| TERMINITIONS | Tin-plated, tips, connectors (other terminations available on request) |
| RESPONSE TIME | 10 s in non-static liquid at 63.2% (depends on configuration) |
| IDENTIFICATION | Laser on cable, label (customizable) |
| DECLARATIONS OF CONFORMITY | CE MARKING, CONFLICT MINERALS, REACH, REACH, ROHS |

GGM09C

PROBES WITH WELDED
THREADED CONNECTION

PRODUCT FAMILY 15CR05

Probe with connector, PT100 sensor, in silicone cable, diameter 4x40 mm capsule. Suitable for temperature sensing in laboratory equipment and machinery, in refrigeration and air conditioning applications, in air quality control applications, in heating applications, in the field of renewable energy, in the food field and in the industrial field.



TECHNICAL DATA

| | |
|----------------------------|--|
| TEMPERATURE RANGE | (-50 +200)°C |
| MODEL | With connector |
| SENSOR | PT100 |
| CAPSULE | Diameter 4x40 mm |
| CABLE | Silicone |
| TERMINITIONS | Tin-plated, tips, connectors (other terminations available on request) |
| RESPONSE TIME | 10 s in non-static liquid at 63.2% (depends on configuration) |
| IDENTIFICATION | Laser on cable, label (customizable) |
| DECLARATIONS OF CONFORMITY | CE MARKING, CONFLICT MINERALS, REACH, REACH, ROHS |

GG002C

STANDARD EYELET PROBES

PRODUCT FAMILY 15C005

Contact probe with PT100 sensor, in silicone cable, diameter 4x40 mm capsule. Suitable for temperature sensing in refrigeration and air conditioning applications, in air quality control applications, in heating applications, in the field of renewable energy and in the food field.



TECHNICAL DATA

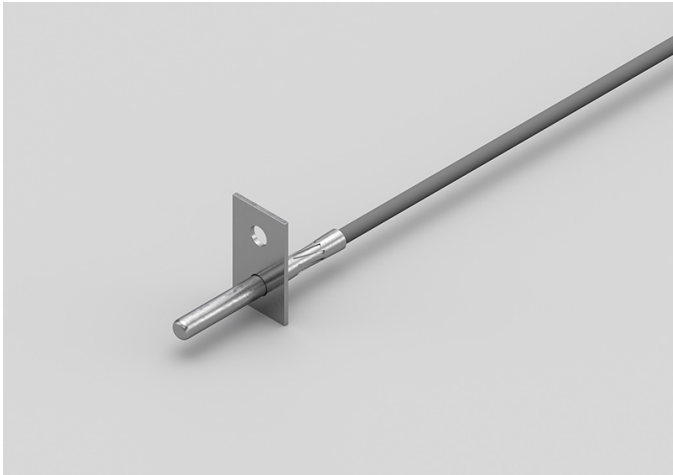
| | |
|----------------------------|--|
| TEMPERATURE RANGE | (-50 +200)°C |
| MODEL | Contact |
| SENSOR | PT100 |
| CAPSULE | Diameter 4x40 mm |
| CABLE | Silicone |
| TERMINITIONS | Tin-plated, tips, connectors (other terminations available on request) |
| RESPONSE TIME | 10 s in non-static liquid at 63.2% (depends on configuration) |
| IDENTIFICATION | Laser on cable, label (customizable) |
| DECLARATIONS OF CONFORMITY | CE MARKING, CONFLICT MINERALS, REACH, REACH, ROHS |

GG003C

METAL CAPSULE PROBES WITH FLANGE

PRODUCT FAMILY 15CA25

Contact probe with PT100 sensor, in silicone cable, diameter 4x40 mm capsule. Suitable for temperature sensing in refrigeration and air conditioning applications, in air quality control applications, in heating applications, in the field of renewable energy and in the food field.



TECHNICAL DATA

| | |
|----------------------------|--|
| TEMPERATURE RANGE | (-50 +200)°C |
| MODEL | Contact |
| SENSOR | PT100 |
| CAPSULE | Diameter 4x40 mm |
| CABLE | Silicone |
| TERMINITIONS | Tin-plated, tips, connectors (other terminations available on request) |
| RESPONSE TIME | 10 s in non-static liquid at 63.2% (depends on configuration) |
| IDENTIFICATION | Laser on cable, label (customizable) |
| DECLARATIONS OF CONFORMITY | CE MARKING, CONFLICT MINERALS, REACH, REACH, ROHS |

GGR07C

PROBES WITH TAPERED METAL CAPSULE

PRODUCT FAMILY 15CA20

Probe with steel capsule, PT100 sensor, in silicone cable, diameter 3X15 mm + diameter 6X40 mm capsule. Suitable for temperature sensing in laboratory equipment and machinery, in refrigeration and air conditioning applications, in air quality control applications, in heating applications and in the food field.



TECHNICAL DATA

| | |
|----------------------------|--|
| TEMPERATURE RANGE | (-50 +200)°C |
| MODEL | Steel capsule |
| SENSOR | PT100 |
| CAPSULE | Diameter 3X15 mm + Diameter 6X40 mm |
| CABLE | Silicone |
| TERMINITIONS | Tin-plated, tips, connectors (other terminations available on request) |
| RESPONSE TIME | 10 s in non-static liquid at 63.2% (depends on configuration) |
| IDENTIFICATION | Laser on cable, label (customizable) |
| DECLARATIONS OF CONFORMITY | CE MARKING, CONFLICT MINERALS, REACH, REACH, ROHS |

GGU02C

PROBES WITH FAST METAL CAPSULE

PRODUCT FAMILY 15CA10

Probe with steel capsule, PT100 sensor, in silicone cable, diameter 4x40 mm capsule. Suitable for temperature sensing in laboratory equipment and machinery, in refrigeration and air conditioning applications, in air quality control applications, in heating applications, in the field of renewable energy and in the food field.



TECHNICAL DATA

| | |
|----------------------------|--|
| TEMPERATURE RANGE | (-50 +200)°C |
| MODEL | Steel capsule |
| SENSOR | PT100 |
| CAPSULE | Diameter 4x40 mm |
| CABLE | Silicone |
| TERMINITIONS | Tin-plated, tips, connectors (other terminations available on request) |
| RESPONSE TIME | 10 s in non-static liquid at 63.2% (depends on configuration) |
| IDENTIFICATION | Laser on cable, label (customizable) |
| DECLARATIONS OF CONFORMITY | CE MARKING, CONFLICT MINERALS, MOCA, REACH, REACH, ROHS |

GTB00C

PROBES WITH STANDARD METAL CAPSULE

PRODUCT FAMILY 15CA05

Probe with steel capsule, PT100 sensor, in Teflon cable, diameter 6x40 mm capsule. Suitable for temperature sensing in laboratory equipment and machinery, in refrigeration and air conditioning applications, in air quality control applications, in heating applications, in the food field and in the industrial field.



TECHNICAL DATA

| | |
|----------------------------|--|
| TEMPERATURE RANGE | (-50 +250)°C |
| MODEL | Steel capsule |
| SENSOR | PT100 |
| CAPSULE | Diameter 6x40 mm |
| CABLE | Teflon |
| TERMINITIONS | Tin-plated, tips, connectors (other terminations available on request) |
| RESPONSE TIME | 10 s in non-static liquid at 63.2% (depends on configuration) |
| IDENTIFICATION | Laser on cable, label (customizable) |
| DECLARATIONS OF CONFORMITY | CE MARKING, CONFLICT MINERALS, MOCA, REACH, REACH, ROHS |

GTM06C

PROBES WITH SLIDING
THREADED CONNECTION

PRODUCT FAMILY 15CR10

Probe with connector, PT100 sensor, in Teflon cable, diameter 4x40 mm capsule. Suitable for temperature sensing in laboratory equipment and machinery, in refrigeration and air conditioning applications, in air quality control applications, in heating applications, in the field of renewable energy, in the food field and in the industrial field.



TECHNICAL DATA

| | |
|----------------------------|--|
| TEMPERATURE RANGE | (-50 +250)°C |
| MODEL | With connector |
| SENSOR | PT100 |
| CAPSULE | Diameter 4x40 mm |
| CABLE | Teflon |
| TERMINITIONS | Tin-plated, tips, connectors (other terminations available on request) |
| RESPONSE TIME | 10 s in non-static liquid at 63.2% (depends on configuration) |
| IDENTIFICATION | Laser on cable, label (customizable) |
| DECLARATIONS OF CONFORMITY | CE MARKING, CONFLICT MINERALS, REACH, REACH, ROHS |

GTM07C

PROBES WITH WELDED
THREADED CONNECTION

PRODUCT FAMILY 15CR05

Probe with connector, PT100 sensor, in Teflon cable, diameter 4x40 mm capsule. Suitable for temperature sensing in laboratory equipment and machinery, in refrigeration and air conditioning applications, in air quality control applications, in heating applications, in the field of renewable energy, in the food field and in the industrial field.



TECHNICAL DATA

| | |
|----------------------------|--|
| TEMPERATURE RANGE | (-50 +250)°C |
| MODEL | With connector |
| SENSOR | PT100 |
| CAPSULE | Diameter 4x40 mm |
| CABLE | Teflon |
| TERMINITIONS | Tin-plated, tips, connectors (other terminations available on request) |
| RESPONSE TIME | 10 s in non-static liquid at 63.2% (depends on configuration) |
| IDENTIFICATION | Laser on cable, label (customizable) |
| DECLARATIONS OF CONFORMITY | CE MARKING, CONFLICT MINERALS, REACH, REACH, ROHS |

GTO00C

METAL CAPSULE PROBES WITH FLANGE

PRODUCT FAMILY 15CA25

Contact probe with PT100 sensor, in Teflon cable, diameter 6x40 mm capsule. Suitable for temperature sensing in refrigeration and air conditioning applications, in air quality control applications, in heating applications, in the food field and in the industrial field.



TECHNICAL DATA

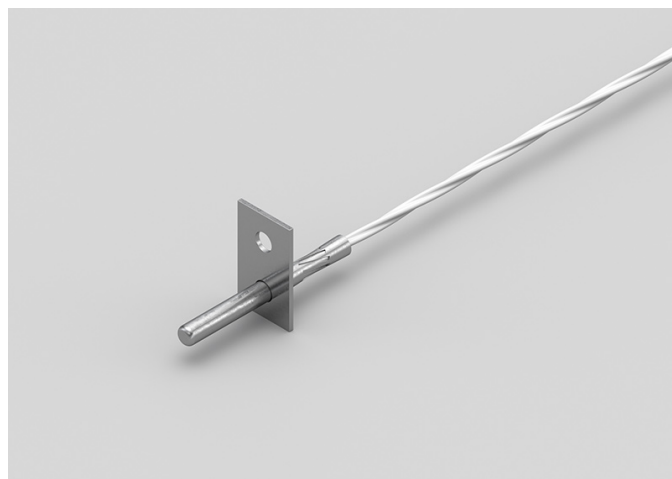
| | |
|----------------------------|--|
| TEMPERATURE RANGE | (-50 +250)°C |
| MODEL | Contact |
| SENSOR | PT100 |
| CAPSULE | Diameter 6x40 mm |
| CABLE | Teflon |
| TERMINITIONS | Tin-plated, tips, connectors (other terminations available on request) |
| RESPONSE TIME | 10 s in non-static liquid at 63.2% (depends on configuration) |
| IDENTIFICATION | Laser on cable, label (customizable) |
| DECLARATIONS OF CONFORMITY | CE MARKING, CONFLICT MINERALS, REACH, REACH, ROHS |

GT001C

METAL CAPSULE PROBES WITH FLANGE

PRODUCT FAMILY 15CA25

Contact probe with PT100 sensor, in Teflon cable, diameter 4x40 mm capsule. Suitable for temperature sensing in refrigeration and air conditioning applications, in air quality control applications, in heating applications, in the field of renewable energy, in the food field and in the industrial field.



TECHNICAL DATA

| | |
|----------------------------|--|
| TEMPERATURE RANGE | (-50 +250)°C |
| MODEL | Contact |
| SENSOR | PT100 |
| CAPSULE | Diameter 4x40 mm |
| CABLE | Teflon |
| TERMINITIONS | Tin-plated, tips, connectors (other terminations available on request) |
| RESPONSE TIME | 10 s in non-static liquid at 63.2% (depends on configuration) |
| IDENTIFICATION | Laser on cable, label (customizable) |
| DECLARATIONS OF CONFORMITY | CE MARKING, CONFLICT MINERALS, REACH, REACH, ROHS |

GT002C

STANDARD EYELET PROBES

PRODUCT FAMILY 15C005

Contact probe with PT100 sensor, in Teflon cable, diameter 6x40 mm capsule. Suitable for temperature sensing in refrigeration and air conditioning applications, in air quality control applications, in heating applications, in the food field and in the industrial field.



TECHNICAL DATA

| | |
|----------------------------|--|
| TEMPERATURE RANGE | (-50 +250)°C |
| MODEL | Contact |
| SENSOR | PT100 |
| CAPSULE | Diameter 6x40 mm |
| CABLE | Teflon |
| TERMINITIONS | Tin-plated, tips, connectors (other terminations available on request) |
| RESPONSE TIME | 10 s in non-static liquid at 63.2% (depends on configuration) |
| IDENTIFICATION | Laser on cable, label (customizable) |
| DECLARATIONS OF CONFORMITY | CE MARKING, CONFLICT MINERALS, REACH, REACH, ROHS |

GT003C

STANDARD EYELET PROBES

PRODUCT FAMILY 15C005

Contact probe with PT100 sensor, in Teflon cable, diameter 4x40 mm capsule. Suitable for temperature sensing in refrigeration and air conditioning applications, in air quality control applications, in heating applications, in the field of renewable energy, in the food field and in the industrial field.



TECHNICAL DATA

| | |
|----------------------------|--|
| TEMPERATURE RANGE | (0 +250)°C |
| MODEL | Contact |
| SENSOR | PT100 |
| CAPSULE | Diameter 4x40 mm |
| CABLE | Teflon |
| TERMINITIONS | Tin-plated, tips, connectors (other terminations available on request) |
| RESPONSE TIME | 10 s in non-static liquid at 63.2% (depends on configuration) |
| IDENTIFICATION | Laser on cable, label (customizable) |
| DECLARATIONS OF CONFORMITY | CE MARKING, CONFLICT MINERALS, REACH, REACH, ROHS |

GTR02C

PROBES WITH TAPERED METAL CAPSULE

PRODUCT FAMILY 15CA20

Probe with steel capsule, PT100 sensor, in Teflon cable, diameter 3X15 mm + diameter 6X40 mm capsule. Suitable for temperature sensing in refrigeration and air conditioning applications, in air quality control applications, in heating applications, in the food field and in the industrial field.



TECHNICAL DATA

| | |
|----------------------------|--|
| TEMPERATURE RANGE | (-50 +250)°C |
| MODEL | Steel capsule |
| SENSOR | PT100 |
| CAPSULE | Diameter 3X15 mm + Diameter 6X40 mm |
| CABLE | Teflon |
| TERMINITIONS | Tin-plated, tips, connectors (other terminations available on request) |
| RESPONSE TIME | 10 s in non-static liquid at 63.2% (depends on configuration) |
| IDENTIFICATION | Laser on cable, label (customizable) |
| DECLARATIONS OF CONFORMITY | CE MARKING, CONFLICT MINERALS, REACH, REACH, ROHS |

GTU01C

PROBES WITH FAST METAL CAPSULE

PRODUCT FAMILY 15CA10

Probe with steel capsule, PT100 sensor, in Teflon cable, diameter 4x40 mm capsule. Suitable for temperature sensing in laboratory equipment and machinery, in refrigeration and air conditioning applications, in air quality control applications, in heating applications, in the field of renewable energy, in the food field and in the industrial field.



TECHNICAL DATA

| | |
|----------------------------|--|
| TEMPERATURE RANGE | (-50 +250)°C |
| MODEL | Steel capsule |
| SENSOR | PT100 |
| CAPSULE | Diameter 4x40 mm |
| CABLE | Teflon |
| TERMINITIONS | Tin-plated, tips, connectors (other terminations available on request) |
| RESPONSE TIME | 10 s in non-static liquid at 63.2% (depends on configuration) |
| IDENTIFICATION | Laser on cable, label (customizable) |
| DECLARATIONS OF CONFORMITY | CE MARKING, CONFLICT MINERALS, MOCA, REACH, REACH, ROHS |

GVB03C

PROBES WITH STANDARD METAL CAPSULE

PRODUCT FAMILY 15CA05

Probe with steel capsule, PT100 sensor, in glass fibre cable, diameter 6x40 mm capsule. Suitable for temperature sensing in laboratory equipment and machinery, in refrigeration and air conditioning applications, in air quality control applications, in heating applications and in the food field.



TECHNICAL DATA

| | |
|----------------------------|--|
| TEMPERATURE RANGE | (0 +350)°C |
| MODEL | Steel capsule |
| SENSOR | PT100 |
| CAPSULE | Diameter 6x40 mm |
| CABLE | Glass fibre |
| TERMINITIONS | Tin-plated, tips, connectors (other terminations available on request) |
| RESPONSE TIME | 10 s in non-static liquid at 63.2% (depends on configuration) |
| IDENTIFICATION | Laser on cable, label (customizable) |
| DECLARATIONS OF CONFORMITY | CE MARKING, CONFLICT MINERALS, MOCA, REACH, REACH, ROHS |

GVM03C

PROBES WITH SLIDING THREADED CONNECTION

PRODUCT FAMILY 15CR10

Probe with connector, PT100 sensor, in glass fibre cable, diameter 4x40 mm capsule. Suitable for temperature sensing in laboratory equipment and machinery, in refrigeration and air conditioning applications, in air quality control applications, in heating applications, in the field of renewable energy, in the food field and in the industrial field.



TECHNICAL DATA

| | |
|----------------------------|--|
| TEMPERATURE RANGE | (0 +250)°C |
| MODEL | With connector |
| SENSOR | PT100 |
| CAPSULE | Diameter 4x40 mm |
| CABLE | Glass fibre |
| TERMINITIONS | Tin-plated, tips, connectors (other terminations available on request) |
| RESPONSE TIME | 10 s in non-static liquid at 63.2% (depends on configuration) |
| IDENTIFICATION | Laser on cable, label (customizable) |
| DECLARATIONS OF CONFORMITY | CE MARKING, CONFLICT MINERALS, REACH, REACH, ROHS |

GVM04C

PROBES WITH WELDED
THREADED CONNECTION

PRODUCT FAMILY 15CR05

Probe with connector, PT100 sensor, in glass fibre cable, diameter 4x40 mm capsule. Suitable for temperature sensing in laboratory equipment and machinery, in refrigeration and air conditioning applications, in air quality control applications, in heating applications, in the field of renewable energy, in the food field and in the industrial field.



TECHNICAL DATA

| | |
|----------------------------|--|
| TEMPERATURE RANGE | (0 +250)°C |
| MODEL | With connector |
| SENSOR | PT100 |
| CAPSULE | Diameter 4x40 mm |
| CABLE | Glass fibre |
| TERMINITIONS | Tin-plated, tips, connectors (other terminations available on request) |
| RESPONSE TIME | 10 s in non-static liquid at 63.2% (depends on configuration) |
| IDENTIFICATION | Laser on cable, label (customizable) |
| DECLARATIONS OF CONFORMITY | CE MARKING, CONFLICT MINERALS, REACH, REACH, ROHS |

GVO01C

METAL CAPSULE PROBES WITH FLANGE

PRODUCT FAMILY 15CA25

Contact probe with PT100 sensor, in glass fibre cable, diameter 6x40 mm capsule. Suitable for temperature sensing in refrigeration and air conditioning applications, in air quality control applications, in heating applications and in the food field.



TECHNICAL DATA

| | |
|----------------------------|--|
| TEMPERATURE RANGE | (0 +350)°C |
| MODEL | Contact |
| SENSOR | PT100 |
| CAPSULE | Diameter 6x40 mm |
| CABLE | Glass fibre |
| TERMINITIONS | Tin-plated, tips, connectors (other terminations available on request) |
| RESPONSE TIME | 10 s in non-static liquid at 63.2% (depends on configuration) |
| IDENTIFICATION | Laser on cable, label (customizable) |
| DECLARATIONS OF CONFORMITY | CE MARKING, CONFLICT MINERALS, REACH, REACH, ROHS |

GVO02C

METAL CAPSULE PROBES WITH FLANGE

PRODUCT FAMILY 15CA25

Contact probe with PT100 sensor, in glass fibre cable, diameter 4x40 mm capsule. Suitable for temperature sensing in refrigeration and air conditioning applications, in air quality control applications and in the food field.



TECHNICAL DATA

| | |
|----------------------------|--|
| TEMPERATURE RANGE | (0 +350)°C |
| MODEL | Contact |
| SENSOR | PT100 |
| CAPSULE | Diameter 4x40 mm |
| CABLE | Glass fibre |
| TERMINITIONS | Tin-plated, tips, connectors (other terminations available on request) |
| RESPONSE TIME | 10 s in non-static liquid at 63.2% (depends on configuration) |
| IDENTIFICATION | Laser on cable, label (customizable) |
| DECLARATIONS OF CONFORMITY | CE MARKING, CONFLICT MINERALS, REACH, REACH, ROHS |

GVO03C

STANDARD EYELET PROBES

PRODUCT FAMILY 15C005

Contact probe with PT100 sensor, in glass fibre cable, diameter 6x40 mm capsule. Suitable for temperature sensing in refrigeration and air conditioning applications, in air quality control applications and in the food field.



TECHNICAL DATA

| | |
|----------------------------|--|
| TEMPERATURE RANGE | (0 +350)°C |
| MODEL | Contact |
| SENSOR | PT100 |
| CAPSULE | Diameter 6x40 mm |
| CABLE | Glass fibre |
| TERMINITIONS | Tin-plated, tips, connectors (other terminations available on request) |
| RESPONSE TIME | 10 s in non-static liquid at 63.2% (depends on configuration) |
| IDENTIFICATION | Laser on cable, label (customizable) |
| DECLARATIONS OF CONFORMITY | CE MARKING, CONFLICT MINERALS, REACH, REACH, ROHS |

GVO04C

STANDARD EYELET PROBES

PRODUCT FAMILY 15C005

Contact probe with PT100 sensor, in glass fibre cable, diameter 4x40 mm capsule. Suitable for temperature sensing in refrigeration and air conditioning applications, in air quality control applications, in heating applications and in the food field.



TECHNICAL DATA

| | |
|----------------------------|--|
| TEMPERATURE RANGE | (0 +350)°C |
| MODEL | Contact |
| SENSOR | PT100 |
| CAPSULE | Diameter 4x40 mm |
| CABLE | Glass fibre |
| TERMINITIONS | Tin-plated, tips, connectors (other terminations available on request) |
| RESPONSE TIME | 10 s in non-static liquid at 63.2% (depends on configuration) |
| IDENTIFICATION | Laser on cable, label (customizable) |
| DECLARATIONS OF CONFORMITY | CE MARKING, CONFLICT MINERALS, REACH, REACH, ROHS |

GVR07C

PROBES WITH TAPERED METAL CAPSULE

PRODUCT FAMILY 15CA20

Probe with steel capsule, PT100 sensor, in glass fibre cable, diameter 3X15 mm + diameter 6X40 mm capsule. Suitable for temperature sensing in laboratory equipment and machinery, in refrigeration and air conditioning applications, in air quality control applications, in heating applications and in the food field.



TECHNICAL DATA

| | |
|----------------------------|--|
| TEMPERATURE RANGE | (0 +350)°C |
| MODEL | Steel capsule |
| SENSOR | PT100 |
| CAPSULE | Diameter 3X15 mm + Diameter 6X40 mm |
| CABLE | Glass fibre |
| TERMINITIONS | Tin-plated, tips, connectors (other terminations available on request) |
| RESPONSE TIME | 10 s in non-static liquid at 63.2% (depends on configuration) |
| IDENTIFICATION | Laser on cable, label (customizable) |
| DECLARATIONS OF CONFORMITY | CE MARKING, CONFLICT MINERALS, REACH, REACH, ROHS |

GVU07C

PROBES WITH FAST METAL CAPSULE

PRODUCT FAMILY 15CA10

Probe with steel capsule, PT100 sensor, in glass fibre cable, diameter 4x40 mm capsule. Suitable for temperature sensing in laboratory equipment and machinery, in refrigeration and air conditioning applications, in air quality control applications, in heating applications, in the field of renewable energy and in the food field.



TECHNICAL DATA

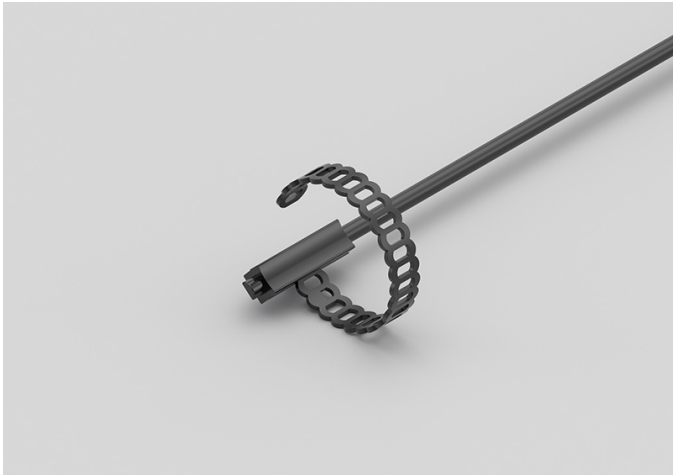
| | |
|----------------------------|--|
| TEMPERATURE RANGE | (0 +350)°C |
| MODEL | Steel capsule |
| SENSOR | PT100 |
| CAPSULE | Diameter 4x40 mm |
| CABLE | Glass fibre |
| TERMINITIONS | Tin-plated, tips, connectors (other terminations available on request) |
| RESPONSE TIME | 10 s in non-static liquid at 63.2% (depends on configuration) |
| IDENTIFICATION | Laser on cable, label (customizable) |
| DECLARATIONS OF CONFORMITY | CE MARKING, CONFLICT MINERALS, MOCA, REACH, REACH, ROHS |

IDI01C

IP68 RUBBER BRACELET PROBES

PRODUCT FAMILY 30GB05

Probe with bracelet, PT1000 sensor, TPE round cable, 6x6x15 mm capsule. Suitable for temperature sensing in air quality control applications.



TECHNICAL DATA

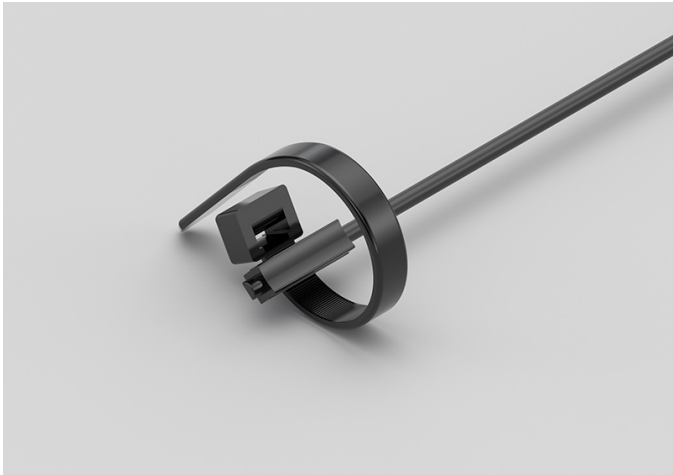
| | |
|----------------------------|--|
| TEMPERATURE RANGE | (-50 +110)°C |
| MODEL | Bracelet |
| SENSOR | PT1000 |
| CAPSULE | 6x6x15 mm |
| CABLE | TPE round |
| TERMINITIONS | Tin-plated, tips, connectors (other terminations available on request) |
| RESPONSE TIME | 10 s in non-static liquid at 63.2% (depends on configuration) |
| IDENTIFICATION | Laser on cable, label (customizable) |
| DECLARATIONS OF CONFORMITY | CE MARKING, CONFLICT MINERALS, REACH, REACH, ROHS |

IDI02C

IP68 RUBBER BRACELET PROBE WITH METAL CLAMP

PRODUCT FAMILY 30GB06

Probe with bracelet, PT1000 sensor, TPE round cable, 6x6x15 mm capsule. Suitable for temperature sensing in air quality control applications.



TECHNICAL DATA

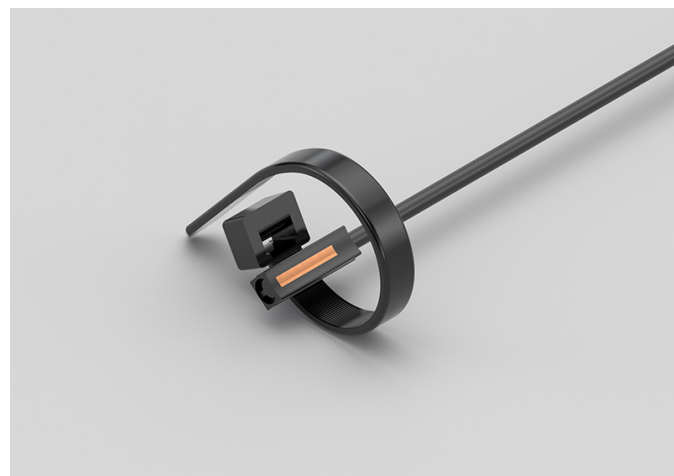
| | |
|----------------------------|--|
| TEMPERATURE RANGE | (-50 +110)°C |
| MODEL | Bracelet |
| SENSOR | PT1000 |
| CAPSULE | 6x6x15 mm |
| CABLE | TPE round |
| TERMINITIONS | Tin-plated, tips, connectors (other terminations available on request) |
| RESPONSE TIME | 10 s in non-static liquid at 63.2% (depends on configuration) |
| IDENTIFICATION | Laser on cable, label (customizable) |
| DECLARATIONS OF CONFORMITY | CE MARKING, CONFLICT MINERALS, REACH, REACH, ROHS |

IDI03C

IP67 COPPER CAPSULE BRACELET PROBES WITH METAL CLAMP

PRODUCT FAMILY 30GB11

Probe with bracelet, PT1000 sensor, TPE round cable, 6x6x15 mm + copper capsule. Suitable for temperature sensing in air quality control applications.



TECHNICAL DATA

| | |
|----------------------------|--|
| TEMPERATURE RANGE | (-50 +110)°C |
| MODEL | Bracelet |
| SENSOR | PT1000 |
| CAPSULE | 6x6x15 mm + copper |
| CABLE | TPE round |
| TERMINITIONS | Tin-plated, tips, connectors (other terminations available on request) |
| RESPONSE TIME | 10 s in non-static liquid at 63.2% (depends on configuration) |
| IDENTIFICATION | Laser on cable, label (customizable) |
| DECLARATIONS OF CONFORMITY | CE MARKING, CONFLICT MINERALS, REACH, REACH, ROHS |

IEE00C

IP67 RUBBER PROBES

6X6X15 MM RUBBER CAPSULE

PRODUCT FAMILY 30GC10

IP67 probe with PT1000 sensor, TPE flat cable, 1,5x5x6 mm capsule. Suitable for temperature sensing in heating applications, in the field of renewable energy and in the food field.



TECHNICAL DATA

| | |
|----------------------------|--|
| TEMPERATURE RANGE | (-50 +120)°C |
| MODEL | IP67 |
| SENSOR | PT1000 |
| CAPSULE | 1,5x5x6 mm |
| CABLE | TPE flat |
| TERMINITIONS | Tin-plated, tips, connectors (other terminations available on request) |
| RESPONSE TIME | 10 s in non-static liquid at 63.2% (depends on configuration) |
| IDENTIFICATION | Laser on cable, label (customizable) |
| DECLARATIONS OF CONFORMITY | CE MARKING, CONFLICT MINERALS, REACH, REACH, ROHS |

IEH00C

IP67 RUBBER PROBES Ø6X20 MM STEEL CAPSULE

PRODUCT FAMILY 30GC12

IP67 probe with PT1000 sensor, TPE flat cable, diameter 6x20 mm capsule. Suitable for temperature sensing in heating applications, in the field of renewable energy and in the food field.



TECHNICAL DATA

| | |
|----------------------------|--|
| TEMPERATURE RANGE | (-50 +120)°C |
| MODEL | IP67 |
| SENSOR | PT1000 |
| CAPSULE | Diameter 6x20 mm |
| CABLE | TPE flat |
| TERMINITIONS | Tin-plated, tips, connectors (other terminations available on request) |
| RESPONSE TIME | 10 s in non-static liquid at 63.2% (depends on configuration) |
| IDENTIFICATION | Laser on cable, label (customizable) |
| DECLARATIONS OF CONFORMITY | CE MARKING, CONFLICT MINERALS, REACH, REACH, ROHS |

IEH01C

IP67 RUBBER PROBES
Ø6X40..50/60 MM STEEL
CAPSULE

PRODUCT FAMILY 30GC13

IP67 probe with PT1000 sensor, TPE flat cable, diameter 6x50 mm capsule. Suitable for temperature sensing in heating applications, in the field of renewable energy and in the food field.



TECHNICAL DATA

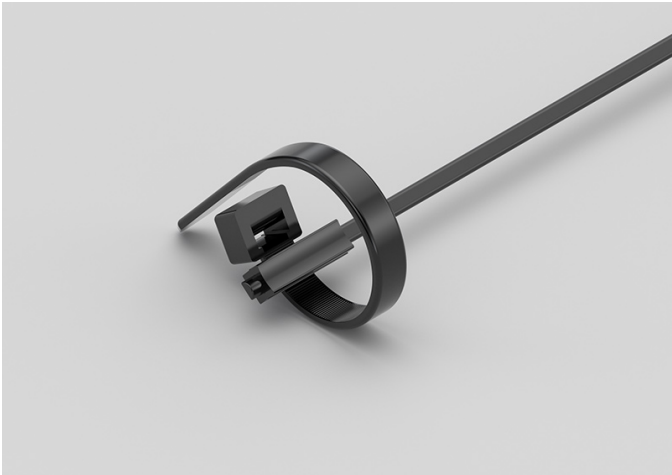
| | |
|----------------------------|--|
| TEMPERATURE RANGE | (-50 +120)°C |
| MODEL | IP67 |
| SENSOR | PT1000 |
| CAPSULE | Diameter 6x50 mm |
| CABLE | TPE flat |
| TERMINITIONS | Tin-plated, tips, connectors (other terminations available on request) |
| RESPONSE TIME | 10 s in non-static liquid at 63.2% (depends on configuration) |
| IDENTIFICATION | Laser on cable, label (customizable) |
| DECLARATIONS OF CONFORMITY | CE MARKING, CONFLICT MINERALS, REACH, REACH, ROHS |

IEI05C

IP67 RUBBER BRACELET PROBES WITH METAL CLAMP

PRODUCT FAMILY 30GB08

Probe with bracelet, PT1000 sensor, TPE flat cable, 6x6x15 mm capsule. Suitable for temperature sensing in heating applications, in the field of renewable energy and in the food field.



TECHNICAL DATA

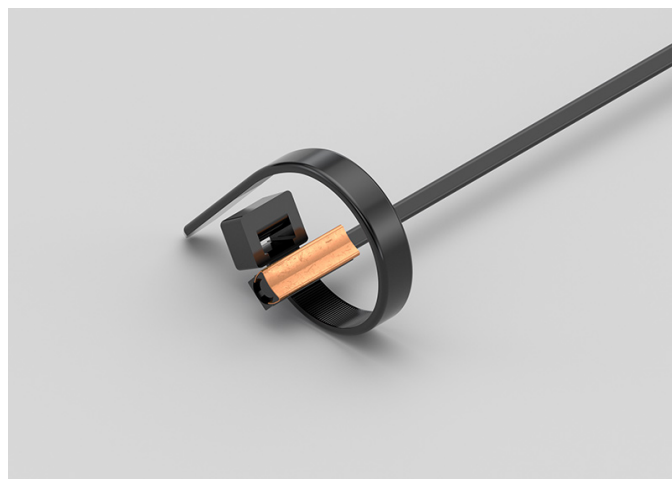
| | |
|----------------------------|--|
| TEMPERATURE RANGE | (-50 +120)°C |
| MODEL | Bracelet |
| SENSOR | PT1000 |
| CAPSULE | 6x6x15 mm |
| CABLE | TPE flat |
| TERMINITIONS | Tin-plated, tips, connectors (other terminations available on request) |
| RESPONSE TIME | 10 s in non-static liquid at 63.2% (depends on configuration) |
| IDENTIFICATION | Laser on cable, label (customizable) |
| DECLARATIONS OF CONFORMITY | CE MARKING, CONFLICT MINERALS, REACH, REACH, ROHS |

IEI06C

IP55 COPPER PLATE BRACELET PROBES WITH METAL CLAMP

PRODUCT FAMILY 30GB16

Probe with bracelet, PT1000 sensor, TPE flat cable, 6x6x15 mm + copper plate capsule. Suitable for temperature sensing in heating applications, in the field of renewable energy and in the food field.



TECHNICAL DATA

| | |
|----------------------------|--|
| TEMPERATURE RANGE | (-50 +120)°C |
| MODEL | Bracelet |
| SENSOR | PT1000 |
| CAPSULE | 6x6x15 mm + copper plate |
| CABLE | TPE flat |
| TERMINITIONS | Tin-plated, tips, connectors (other terminations available on request) |
| RESPONSE TIME | 10 s in non-static liquid at 63.2% (depends on configuration) |
| IDENTIFICATION | Laser on cable, label (customizable) |
| DECLARATIONS OF CONFORMITY | CE MARKING, CONFLICT MINERALS, REACH, REACH, ROHS |

IEK00C

IP67 RUBBER PROBES

Ø5X20 MM RUBBER CAPSULE

PRODUCT FAMILY 30GC11

IP67 probe with PT1000 sensor, TPE flat cable, diameter 5x20 mm capsule. Suitable for temperature sensing in refrigeration and air conditioning applications, in heating applications, in the field of renewable energy, in the food field and in the industrial field.



TECHNICAL DATA

| | |
|----------------------------|--|
| TEMPERATURE RANGE | (-50 +120)°C |
| MODEL | IP67 |
| SENSOR | PT1000 |
| CAPSULE | Diameter 5x20 mm |
| CABLE | TPE flat |
| TERMINITIONS | Tin-plated, tips, connectors (other terminations available on request) |
| RESPONSE TIME | 10 s in non-static liquid at 63.2% (depends on configuration) |
| IDENTIFICATION | Laser on cable, label (customizable) |
| DECLARATIONS OF CONFORMITY | CE MARKING, CONFLICT MINERALS, REACH, REACH, ROHS |

IGB01C

PROBES WITH STANDARD METAL CAPSULE

PRODUCT FAMILY 15CA05

Probe with steel capsule, PT1000 sensor, in silicone cable, diameter 6x40 mm capsule. Suitable for temperature sensing in refrigeration and air conditioning applications, in heating applications, in the field of renewable energy, in the food field and in the industrial field.



TECHNICAL DATA

| | |
|----------------------------|--|
| TEMPERATURE RANGE | (-50 +200)°C |
| MODEL | Steel capsule |
| SENSOR | PT1000 |
| CAPSULE | Diameter 6x40 mm |
| CABLE | Silicone |
| TERMINITIONS | Tin-plated, tips, connectors (other terminations available on request) |
| RESPONSE TIME | 10 s in non-static liquid at 63.2% (depends on configuration) |
| IDENTIFICATION | Laser on cable, label (customizable) |
| DECLARATIONS OF CONFORMITY | CE MARKING, CONFLICT MINERALS, MOCA, REACH, REACH, ROHS |

IGM06C

PROBES WITH SLIDING
THREADED CONNECTION

PRODUCT FAMILY 15CR10

Probe with connector, PT1000 sensor, in silicone cable, diameter 4x40 mm capsule. Suitable for temperature sensing in heating applications, in the field of renewable energy and in the food field.



TECHNICAL DATA

| | |
|----------------------------|--|
| TEMPERATURE RANGE | (-50 +200)°C |
| MODEL | With connector |
| SENSOR | PT1000 |
| CAPSULE | Diameter 4x40 mm |
| CABLE | Silicone |
| TERMINITIONS | Tin-plated, tips, connectors (other terminations available on request) |
| RESPONSE TIME | 10 s in non-static liquid at 63.2% (depends on configuration) |
| IDENTIFICATION | Laser on cable, label (customizable) |
| DECLARATIONS OF CONFORMITY | CE MARKING, CONFLICT MINERALS, REACH, REACH, ROHS |

IGM07C

STANDARD EYELET PROBES

PRODUCT FAMILY 15C005

Contact probe with PT1000 sensor, in silicone cable, diameter 4x40 mm capsule. Suitable for temperature sensing in refrigeration and air conditioning applications, in air quality control applications and in the food field.



TECHNICAL DATA

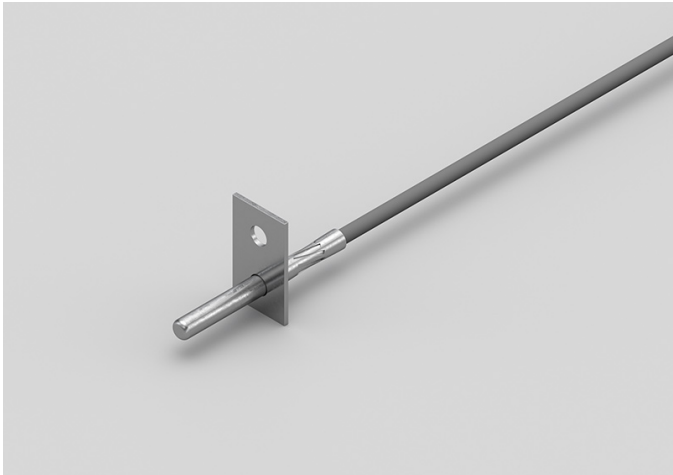
| | |
|----------------------------|--|
| TEMPERATURE RANGE | (-50 +200)°C |
| MODEL | Contact |
| SENSOR | PT1000 |
| CAPSULE | Diameter 4x40 mm |
| CABLE | Silicone |
| TERMINITIONS | Tin-plated, tips, connectors (other terminations available on request) |
| RESPONSE TIME | 10 s in non-static liquid at 63.2% (depends on configuration) |
| IDENTIFICATION | Laser on cable, label (customizable) |
| DECLARATIONS OF CONFORMITY | CE MARKING, CONFLICT MINERALS, REACH, REACH, ROHS |

IG004C

METAL CAPSULE PROBES
WITH FLANGE

PRODUCT FAMILY 15CA25

Contact probe with PT1000 sensor, in silicone cable, diameter 4x40 mm capsule. Suitable for temperature sensing in heating applications and in the food field.



TECHNICAL DATA

| | |
|----------------------------|--|
| TEMPERATURE RANGE | (-50 +200)°C |
| MODEL | Contact |
| SENSOR | PT1000 |
| CAPSULE | Diameter 4x40 mm |
| CABLE | Silicone |
| TERMINITIONS | Tin-plated, tips, connectors (other terminations available on request) |
| RESPONSE TIME | 10 s in non-static liquid at 63.2% (depends on configuration) |
| IDENTIFICATION | Laser on cable, label (customizable) |
| DECLARATIONS OF CONFORMITY | CE MARKING, CONFLICT MINERALS, REACH, REACH, ROHS |

IG005C

STANDARD EYELET PROBES

PRODUCT FAMILY 15C005

Contact probe with PT1000 sensor, in silicone cable, diameter 4x40 mm capsule. Suitable for temperature sensing in heating applications and in the food field.



TECHNICAL DATA

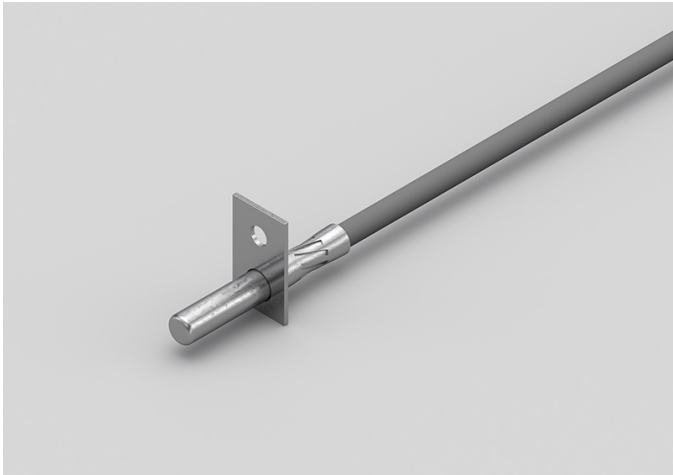
| | |
|----------------------------|--|
| TEMPERATURE RANGE | (-50 +200)°C |
| MODEL | Contact |
| SENSOR | PT1000 |
| CAPSULE | Diameter 4x40 mm |
| CABLE | Silicone |
| TERMINITIONS | Tin-plated, tips, connectors (other terminations available on request) |
| RESPONSE TIME | 10 s in non-static liquid at 63.2% (depends on configuration) |
| IDENTIFICATION | Laser on cable, label (customizable) |
| DECLARATIONS OF CONFORMITY | CE MARKING, CONFLICT MINERALS, REACH, REACH, ROHS |

IG006C

METAL CAPSULE PROBES
WITH FLANGE

PRODUCT FAMILY 15CA25

Contact probe with PT1000 sensor, in silicone cable, diameter 6x40 mm capsule. Suitable for temperature sensing in heating applications and in the food field.



TECHNICAL DATA

| | |
|----------------------------|--|
| TEMPERATURE RANGE | (-50 +200)°C |
| MODEL | Contact |
| SENSOR | PT1000 |
| CAPSULE | Diameter 6x40 mm |
| CABLE | Silicone |
| TERMINITIONS | Tin-plated, tips, connectors (other terminations available on request) |
| RESPONSE TIME | 10 s in non-static liquid at 63.2% (depends on configuration) |
| IDENTIFICATION | Laser on cable, label (customizable) |
| DECLARATIONS OF CONFORMITY | CE MARKING, CONFLICT MINERALS, REACH, REACH, ROHS |

IG007C

STANDARD EYELET PROBES

PRODUCT FAMILY 15C005

Contact probe with PT1000 sensor, in silicone cable, diameter 6x40 mm capsule. Suitable for temperature sensing in refrigeration and air conditioning applications, in heating applications, in the food field and in the industrial field.



TECHNICAL DATA

| | |
|----------------------------|--|
| TEMPERATURE RANGE | (-50 +200)°C |
| MODEL | Contact |
| SENSOR | PT1000 |
| CAPSULE | Diameter 6x40 mm |
| CABLE | Silicone |
| TERMINITIONS | Tin-plated, tips, connectors (other terminations available on request) |
| RESPONSE TIME | 10 s in non-static liquid at 63.2% (depends on configuration) |
| IDENTIFICATION | Laser on cable, label (customizable) |
| DECLARATIONS OF CONFORMITY | CE MARKING, CONFLICT MINERALS, REACH, REACH, ROHS |

IGR03C

PROBES WITH TAPERED METAL CAPSULE

PRODUCT FAMILY 15CA20

Probe with steel capsule, PT1000 sensor, in silicone cable, diameter 3X15 mm + diameter 6X40 mm capsule. Suitable for temperature sensing in refrigeration and air conditioning applications, in heating applications, in the food field and in the industrial field.



TECHNICAL DATA

| | |
|----------------------------|--|
| TEMPERATURE RANGE | (-50 +200)°C |
| MODEL | Steel capsule |
| SENSOR | PT1000 |
| CAPSULE | Diameter 3X15 mm + Diameter 6X40 mm |
| CABLE | Silicone |
| TERMINITIONS | Tin-plated, tips, connectors (other terminations available on request) |
| RESPONSE TIME | 10 s in non-static liquid at 63.2% (depends on configuration) |
| IDENTIFICATION | Laser on cable, label (customizable) |
| DECLARATIONS OF CONFORMITY | CE MARKING, CONFLICT MINERALS, REACH, REACH, ROHS |

IGU02C

PROBES WITH FAST
METAL CAPSULE

PRODUCT FAMILY 15CA10

Probe with steel capsule, PT1000 sensor, in silicone cable, diameter 4x40 mm capsule. Suitable for temperature sensing in heating applications and in the food field.



TECHNICAL DATA

| | |
|----------------------------|--|
| TEMPERATURE RANGE | (-50 +200)°C |
| MODEL | Steel capsule |
| SENSOR | PT1000 |
| CAPSULE | Diameter 4x40 mm |
| CABLE | Silicone |
| TERMINITIONS | Tin-plated, tips, connectors (other terminations available on request) |
| RESPONSE TIME | 10 s in non-static liquid at 63.2% (depends on configuration) |
| IDENTIFICATION | Laser on cable, label (customizable) |
| DECLARATIONS OF CONFORMITY | CE MARKING, CONFLICT MINERALS, MOCA, REACH, REACH, ROHS |

ITB01C

PROBES WITH STANDARD METAL CAPSULE

PRODUCT FAMILY 15CA05

Probe with steel capsule, PT1000 sensor, in Teflon cable, diameter 6x40 mm capsule. Suitable for temperature sensing in laboratory equipment and machinery.



TECHNICAL DATA

| | |
|----------------------------|--|
| TEMPERATURE RANGE | (-50 +250)°C |
| MODEL | Steel capsule |
| SENSOR | PT1000 |
| CAPSULE | Diameter 6x40 mm |
| CABLE | Teflon |
| TERMINITIONS | Tin-plated, tips, connectors (other terminations available on request) |
| RESPONSE TIME | 10 s in non-static liquid at 63.2% (depends on configuration) |
| IDENTIFICATION | Laser on cable, label (customizable) |
| DECLARATIONS OF CONFORMITY | CE MARKING, CONFLICT MINERALS, MOCA, REACH, REACH, ROHS |

ITM01C

PROBES WITH SLIDING
THREADED CONNECTION

PRODUCT FAMILY 15CR10

Probe with connector, PT1000 sensor, in Teflon cable, diameter 4x40 mm capsule. Suitable for temperature sensing in laboratory equipment and machinery, in heating applications and in the food field.



TECHNICAL DATA

| | |
|----------------------------|--|
| TEMPERATURE RANGE | (-50 +250)°C |
| MODEL | With connector |
| SENSOR | PT1000 |
| CAPSULE | Diameter 4x40 mm |
| CABLE | Teflon |
| TERMINITIONS | Tin-plated, tips, connectors (other terminations available on request) |
| RESPONSE TIME | 10 s in non-static liquid at 63.2% (depends on configuration) |
| IDENTIFICATION | Laser on cable, label (customizable) |
| DECLARATIONS OF CONFORMITY | CE MARKING, CONFLICT MINERALS, REACH, REACH, ROHS |

ITM02C

PROBES WITH WELDED
THREADED CONNECTION

PRODUCT FAMILY 15CR05

Probe with connector, PT1000 sensor, in Teflon cable, diameter 4x40 mm capsule. Suitable for temperature sensing in laboratory equipment and machinery, in heating applications and in the food field.



TECHNICAL DATA

| | |
|----------------------------|--|
| TEMPERATURE RANGE | (-50 +250)°C |
| MODEL | With connector |
| SENSOR | PT1000 |
| CAPSULE | Diameter 4x40 mm |
| CABLE | Teflon |
| TERMINITIONS | Tin-plated, tips, connectors (other terminations available on request) |
| RESPONSE TIME | 10 s in non-static liquid at 63.2% (depends on configuration) |
| IDENTIFICATION | Laser on cable, label (customizable) |
| DECLARATIONS OF CONFORMITY | CE MARKING, CONFLICT MINERALS, REACH, REACH, ROHS |

IT003C

STANDARD EYELET PROBES

PRODUCT FAMILY 15C005

Contact probe with PT1000 sensor, in Teflon cable, diameter 4x40 mm capsule. Suitable for temperature sensing in laboratory equipment and machinery, in refrigeration and air conditioning applications, in heating applications, in the food field and in the industrial field.



TECHNICAL DATA

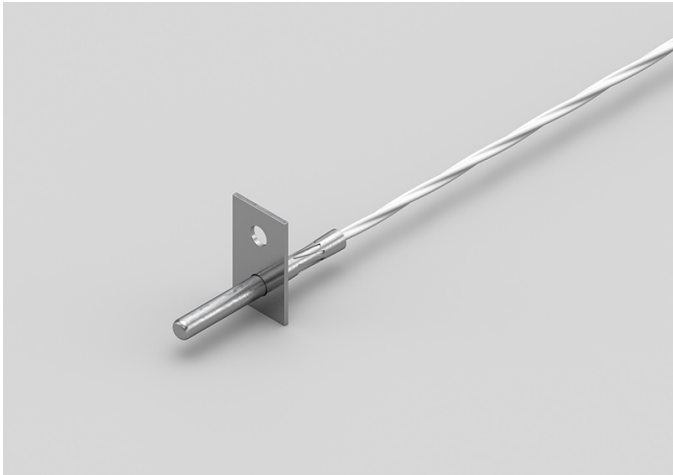
| | |
|----------------------------|--|
| TEMPERATURE RANGE | (0 +250)°C |
| MODEL | Contact |
| SENSOR | PT1000 |
| CAPSULE | Diameter 4x40 mm |
| CABLE | Teflon |
| TERMINITIONS | Tin-plated, tips, connectors (other terminations available on request) |
| RESPONSE TIME | 10 s in non-static liquid at 63.2% (depends on configuration) |
| IDENTIFICATION | Laser on cable, label (customizable) |
| DECLARATIONS OF CONFORMITY | CE MARKING, CONFLICT MINERALS, REACH, REACH, ROHS |

ITO04C

METAL CAPSULE PROBES WITH FLANGE

PRODUCT FAMILY 15CA25

Contact probe with PT1000 sensor, in Teflon cable, diameter 4x40 mm capsule. Suitable for temperature sensing in laboratory equipment and machinery, in heating applications and in the food field.



TECHNICAL DATA

| | |
|----------------------------|--|
| TEMPERATURE RANGE | (-50 +250)°C |
| MODEL | Contact |
| SENSOR | PT1000 |
| CAPSULE | Diameter 4x40 mm |
| CABLE | Teflon |
| TERMINITIONS | Tin-plated, tips, connectors (other terminations available on request) |
| RESPONSE TIME | 10 s in non-static liquid at 63.2% (depends on configuration) |
| IDENTIFICATION | Laser on cable, label (customizable) |
| DECLARATIONS OF CONFORMITY | CE MARKING, CONFLICT MINERALS, REACH, REACH, ROHS |

IT005C

METAL CAPSULE PROBES WITH FLANGE

PRODUCT FAMILY 15CA25

Contact probe with PT1000 sensor, in Teflon cable, diameter 6x40 mm capsule. Suitable for temperature sensing in laboratory equipment and machinery, in heating applications, in the food field and in the industrial field.



TECHNICAL DATA

| | |
|----------------------------|--|
| TEMPERATURE RANGE | (-50 +250)°C |
| MODEL | Contact |
| SENSOR | PT1000 |
| CAPSULE | Diameter 6x40 mm |
| CABLE | Teflon |
| TERMINITIONS | Tin-plated, tips, connectors (other terminations available on request) |
| RESPONSE TIME | 10 s in non-static liquid at 63.2% (depends on configuration) |
| IDENTIFICATION | Laser on cable, label (customizable) |
| DECLARATIONS OF CONFORMITY | CE MARKING, CONFLICT MINERALS, REACH, REACH, ROHS |

IT006C

STANDARD EYELET PROBES

PRODUCT FAMILY 15C005

Contact probe with PT1000 sensor, in Teflon cable, diameter 6x40 mm capsule. Suitable for temperature sensing in laboratory equipment and machinery, in heating applications, in the food field and in the industrial field.



TECHNICAL DATA

| | |
|----------------------------|--|
| TEMPERATURE RANGE | (-50 +250)°C |
| MODEL | Contact |
| SENSOR | PT1000 |
| CAPSULE | Diameter 6x40 mm |
| CABLE | Teflon |
| TERMINITIONS | Tin-plated, tips, connectors (other terminations available on request) |
| RESPONSE TIME | 10 s in non-static liquid at 63.2% (depends on configuration) |
| IDENTIFICATION | Laser on cable, label (customizable) |
| DECLARATIONS OF CONFORMITY | CE MARKING, CONFLICT MINERALS, REACH, REACH, ROHS |

ITR00C

PROBES WITH TAPERED METAL CAPSULE

PRODUCT FAMILY 15CA20

Probe with steel capsule, PT1000 sensor, in Teflon cable, diameter 3X15 mm + diameter 6X40 mm capsule. Suitable for temperature sensing in laboratory equipment and machinery, in refrigeration and air conditioning applications, in air quality control applications, in the field of renewable energy and in the food field.



TECHNICAL DATA

| | |
|----------------------------|--|
| TEMPERATURE RANGE | (-50 +250)°C |
| MODEL | Steel capsule |
| SENSOR | PT1000 |
| CAPSULE | Diameter 3X15 mm + Diameter 6X40 mm |
| CABLE | Teflon |
| TERMINATIONS | Tin-plated, tips, connectors (other terminations available on request) |
| RESPONSE TIME | 10 s in non-static liquid at 63.2% (depends on configuration) |
| IDENTIFICATION | Laser on cable, label (customizable) |
| DECLARATIONS OF CONFORMITY | CE MARKING, CONFLICT MINERALS, REACH, REACH, ROHS |

ITU05C

PROBES WITH FAST METAL CAPSULE

PRODUCT FAMILY 15CA10

Probe with steel capsule, PT1000 sensor, in Teflon cable, diameter 4x40 mm capsule. Suitable for temperature sensing in laboratory equipment and machinery, in refrigeration and air conditioning applications, in air quality control applications, in the field of renewable energy and in the food field.



TECHNICAL DATA

| | |
|----------------------------|--|
| TEMPERATURE RANGE | (-50 +250)°C |
| MODEL | Steel capsule |
| SENSOR | PT1000 |
| CAPSULE | Diameter 4x40 mm |
| CABLE | Teflon |
| TERMINITIONS | Tin-plated, tips, connectors (other terminations available on request) |
| RESPONSE TIME | 10 s in non-static liquid at 63.2% (depends on configuration) |
| IDENTIFICATION | Laser on cable, label (customizable) |
| DECLARATIONS OF CONFORMITY | CE MARKING, CONFLICT MINERALS, MOCA, REACH, REACH, ROHS |

IVM00C

PROBES WITH SLIDING THREADED CONNECTION

PRODUCT FAMILY 15CR10

Probe with connector, PT1000 sensor, in glass fibre cable, diameter 4x40 mm capsule. Suitable for temperature sensing in laboratory equipment and machinery, in heating applications, in the field of renewable energy, in the food field and in the industrial field.



TECHNICAL DATA

| | |
|----------------------------|--|
| TEMPERATURE RANGE | (0 +250)°C |
| MODEL | With connector |
| SENSOR | PT1000 |
| CAPSULE | Diameter 4x40 mm |
| CABLE | Glass fibre |
| TERMINITIONS | Tin-plated, tips, connectors (other terminations available on request) |
| RESPONSE TIME | 10 s in non-static liquid at 63.2% (depends on configuration) |
| IDENTIFICATION | Laser on cable, label (customizable) |
| DECLARATIONS OF CONFORMITY | CE MARKING, CONFLICT MINERALS, REACH, REACH, ROHS |

IVM01C

PROBES WITH WELDED THREADED CONNECTION

PRODUCT FAMILY 15CR05

Probe with connector, PT1000 sensor, in glass fibre cable, diameter 4x40 mm capsule. Suitable for temperature sensing in laboratory equipment and machinery, in heating applications, in the field of renewable energy and in the food field.



TECHNICAL DATA

| | |
|----------------------------|--|
| TEMPERATURE RANGE | (0 +250)°C |
| MODEL | With connector |
| SENSOR | PT1000 |
| CAPSULE | Diameter 4x40 mm |
| CABLE | Glass fibre |
| TERMINITIONS | Tin-plated, tips, connectors (other terminations available on request) |
| RESPONSE TIME | 10 s in non-static liquid at 63.2% (depends on configuration) |
| IDENTIFICATION | Laser on cable, label (customizable) |
| DECLARATIONS OF CONFORMITY | CE MARKING, CONFLICT MINERALS, REACH, REACH, ROHS |

IVO02C

STANDARD EYELET PROBES

PRODUCT FAMILY 15C005

Contact probe with PT1000 sensor, in glass fibre cable, diameter 4x40 mm capsule. Suitable for temperature sensing in laboratory equipment and machinery, in heating applications, in the field of renewable energy, in the food field and in the industrial field.



TECHNICAL DATA

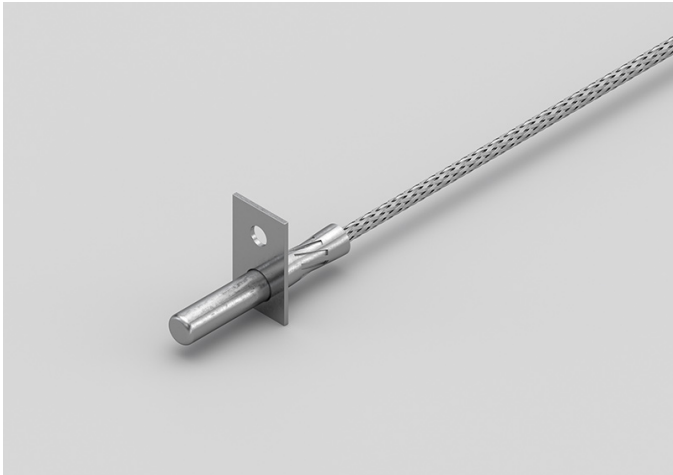
| | |
|----------------------------|--|
| TEMPERATURE RANGE | (0 +350)°C |
| MODEL | Contact |
| SENSOR | PT1000 |
| CAPSULE | Diameter 4x40 mm |
| CABLE | Glass fibre |
| TERMINITIONS | Tin-plated, tips, connectors (other terminations available on request) |
| RESPONSE TIME | 10 s in non-static liquid at 63.2% (depends on configuration) |
| IDENTIFICATION | Laser on cable, label (customizable) |
| DECLARATIONS OF CONFORMITY | CE MARKING, CONFLICT MINERALS, REACH, REACH, ROHS |

IVO03C

METAL CAPSULE PROBES
WITH FLANGE

PRODUCT FAMILY 15CA25

Contact probe with PT1000 sensor, in glass fibre cable, diameter 6x40 mm capsule. Suitable for temperature sensing in laboratory equipment and machinery.



TECHNICAL DATA

| | |
|----------------------------|--|
| TEMPERATURE RANGE | (0 +350)°C |
| MODEL | Contact |
| SENSOR | PT1000 |
| CAPSULE | Diameter 6x40 mm |
| CABLE | Glass fibre |
| TERMINITIONS | Tin-plated, tips, connectors (other terminations available on request) |
| RESPONSE TIME | 10 s in non-static liquid at 63.2% (depends on configuration) |
| IDENTIFICATION | Laser on cable, label (customizable) |
| DECLARATIONS OF CONFORMITY | CE MARKING, CONFLICT MINERALS, REACH, REACH, ROHS |

IVO04C

STANDARD EYELET PROBES

PRODUCT FAMILY 15C005

Contact probe with PT1000 sensor, in glass fibre cable, diameter 6x40 mm capsule. Suitable for temperature sensing in laboratory equipment and machinery.



TECHNICAL DATA

| | |
|----------------------------|--|
| TEMPERATURE RANGE | (0 +350)°C |
| MODEL | Contact |
| SENSOR | PT1000 |
| CAPSULE | Diameter 6x40 mm |
| CABLE | Glass fibre |
| TERMINITIONS | Tin-plated, tips, connectors (other terminations available on request) |
| RESPONSE TIME | 10 s in non-static liquid at 63.2% (depends on configuration) |
| IDENTIFICATION | Laser on cable, label (customizable) |
| DECLARATIONS OF CONFORMITY | CE MARKING, CONFLICT MINERALS, REACH, REACH, ROHS |

IVR01C

PROBES WITH TAPERED METAL CAPSULE

PRODUCT FAMILY 15CA20

Probe with steel capsule, PT1000 sensor, in glass fibre cable, diameter 3X15 mm + diameter 6X40 mm capsule. Suitable for temperature sensing in laboratory equipment and machinery.



TECHNICAL DATA

| | |
|----------------------------|--|
| TEMPERATURE RANGE | (0 +350)°C |
| MODEL | Steel capsule |
| SENSOR | PT1000 |
| CAPSULE | Diameter 3X15 mm + Diameter 6X40 mm |
| CABLE | Glass fibre |
| TERMINITIONS | Tin-plated, tips, connectors (other terminations available on request) |
| RESPONSE TIME | 10 s in non-static liquid at 63.2% (depends on configuration) |
| IDENTIFICATION | Laser on cable, label (customizable) |
| DECLARATIONS OF CONFORMITY | CE MARKING, CONFLICT MINERALS, REACH, REACH, ROHS |

IVU07C

PROBES WITH FAST METAL CAPSULE

PRODUCT FAMILY 15CA10

Probe with steel capsule, PT1000 sensor, in glass fibre cable, diameter 4x40 mm capsule. Suitable for temperature sensing in laboratory equipment and machinery, in heating applications, in the food field and in the industrial field.



TECHNICAL DATA

| | |
|----------------------------|--|
| TEMPERATURE RANGE | (0 +350)°C |
| MODEL | Steel capsule |
| SENSOR | PT1000 |
| CAPSULE | Diameter 4x40 mm |
| CABLE | Glass fibre |
| TERMINITIONS | Tin-plated, tips, connectors (other terminations available on request) |
| RESPONSE TIME | 10 s in non-static liquid at 63.2% (depends on configuration) |
| IDENTIFICATION | Laser on cable, label (customizable) |
| DECLARATIONS OF CONFORMITY | CE MARKING, CONFLICT MINERALS, MOCA, REACH, REACH, ROHS |

JKX01C

PROBES WITH EXPOSED
NON-INSULATED SENSOR

PRODUCT FAMILY 10EP15

Probe with exposed sensor, TCJ sensor, in Kapton cable, without capsule capsule. Suitable for temperature sensing in laboratory equipment and machinery, in heating applications and in the food field.



TECHNICAL DATA

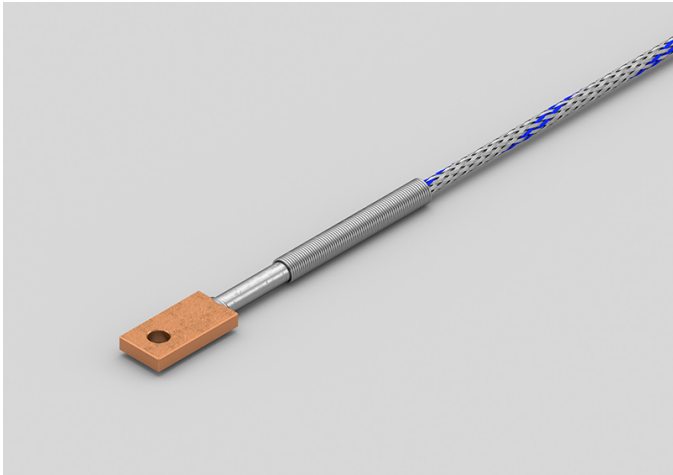
| | |
|----------------------------|--|
| TEMPERATURE RANGE | (0 +350)°C |
| MODEL | Exposed sensor |
| SENSOR | TCJ |
| CAPSULE | Without capsule |
| CABLE | Kapton |
| TERMINITIONS | Tin-plated, tips, connectors (other terminations available on request) |
| RESPONSE TIME | 10 s in non-static liquid at 63.2% (depends on configuration) |
| IDENTIFICATION | Laser on cable, label (customizable) |
| DECLARATIONS OF CONFORMITY | CE MARKING, CONFLICT MINERALS, REACH, REACH, ROHS |

JVO19C

RECTANGULAR PLATE EYELET PROBES

PRODUCT FAMILY 15C015

Contact probe with TCJ sensor, in glass fibre cable, plate-shaped capsule. Suitable for temperature sensing in laboratory equipment and machinery, in heating applications, in the food field and in the industrial field.



TECHNICAL DATA

| | |
|----------------------------|--|
| TEMPERATURE RANGE | (0 +350)°C |
| MODEL | Contact |
| SENSOR | TCJ |
| CAPSULE | Plate |
| CABLE | Glass fibre |
| TERMINITIONS | Tin-plated, tips, connectors (other terminations available on request) |
| RESPONSE TIME | 10 s in non-static liquid at 63.2% (depends on configuration) |
| IDENTIFICATION | Laser on cable, label (customizable) |
| DECLARATIONS OF CONFORMITY | CE MARKING, CONFLICT MINERALS, REACH, REACH, ROHS |

JVO20C

EYELET RING PROBES

PRODUCT FAMILY 15C010

Contact probe with TCJ sensor, in glass fibre cable, plate-shaped capsule. Suitable for temperature sensing in laboratory equipment and machinery.



TECHNICAL DATA

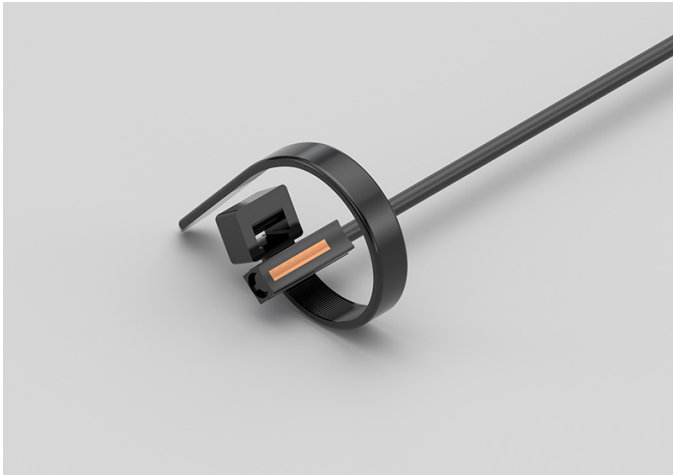
| | |
|----------------------------|--|
| TEMPERATURE RANGE | (0 +350)°C |
| MODEL | Contact |
| SENSOR | TCJ |
| CAPSULE | Plate |
| CABLE | Glass fibre |
| TERMINITIONS | Tin-plated, tips, connectors (other terminations available on request) |
| RESPONSE TIME | 10 s in non-static liquid at 63.2% (depends on configuration) |
| IDENTIFICATION | Laser on cable, label (customizable) |
| DECLARATIONS OF CONFORMITY | CE MARKING, CONFLICT MINERALS, REACH, REACH, ROHS |

NDI13C

IP67 COPPER CAPSULE
BRACELET PROBES WITH
METAL CLAMP

PRODUCT FAMILY 30GB11

Probe with bracelet, NTC sensor, TPE round cable, 6x6x15 mm + copper capsule. Suitable for temperature sensing in laboratory equipment and machinery.



TECHNICAL DATA

| | |
|----------------------------|--|
| TEMPERATURE RANGE | (-50 +110)°C |
| MODEL | Bracelet |
| SENSOR | NTC |
| CAPSULE | 6x6x15 mm + copper |
| CABLE | TPE round |
| TERMINITIONS | Tin-plated, tips, connectors (other terminations available on request) |
| RESPONSE TIME | 10 s in non-static liquid at 63.2% (depends on configuration) |
| IDENTIFICATION | Laser on cable, label (customizable) |
| DECLARATIONS OF CONFORMITY | CE MARKING, CONFLICT MINERALS, REACH, REACH, ROHS |

NEB00C

IP67 RUBBER PROBES
Ø6X40..50/60 MM STEEL
CAPSULE

PRODUCT FAMILY 30GC13

IP67 probe with NTC sensor, TPE flat cable, diameter 6x40 mm capsule. Suitable for temperature sensing in laboratory equipment and machinery.



TECHNICAL DATA

| | |
|----------------------------|--|
| TEMPERATURE RANGE | (-50 +120)°C |
| MODEL | IP67 |
| SENSOR | NTC |
| CAPSULE | Diameter 6x40 mm |
| CABLE | TPE flat |
| TERMINITIONS | Tin-plated, tips, connectors (other terminations available on request) |
| RESPONSE TIME | 10 s in non-static liquid at 63.2% (depends on configuration) |
| IDENTIFICATION | Laser on cable, label (customizable) |
| DECLARATIONS OF CONFORMITY | CE MARKING, CONFLICT MINERALS, REACH, REACH, ROHS |

NEE00C

IP67 RUBBER PROBES

6X6X15 MM RUBBER CAPSULE

PRODUCT FAMILY 30GC10

IP67 probe with NTC sensor, TPE flat cable, 1,5x5x6 mm capsule. Suitable for temperature sensing in laboratory equipment and machinery.



TECHNICAL DATA

| | |
|----------------------------|--|
| TEMPERATURE RANGE | (-50 +120)°C |
| MODEL | IP67 |
| SENSOR | NTC |
| CAPSULE | 1,5x5x6 mm |
| CABLE | TPE flat |
| TERMINITIONS | Tin-plated, tips, connectors (other terminations available on request) |
| RESPONSE TIME | 10 s in non-static liquid at 63.2% (depends on configuration) |
| IDENTIFICATION | Laser on cable, label (customizable) |
| DECLARATIONS OF CONFORMITY | CE MARKING, CONFLICT MINERALS, REACH, REACH, ROHS |

NEH01C

IP67 RUBBER PROBES
Ø6X40..50/60 MM STEEL
CAPSULE

PRODUCT FAMILY 30GC13

IP67 probe with NTC sensor, TPE flat cable, diameter 6x50 mm capsule. Suitable for temperature sensing in laboratory equipment and machinery.



TECHNICAL DATA

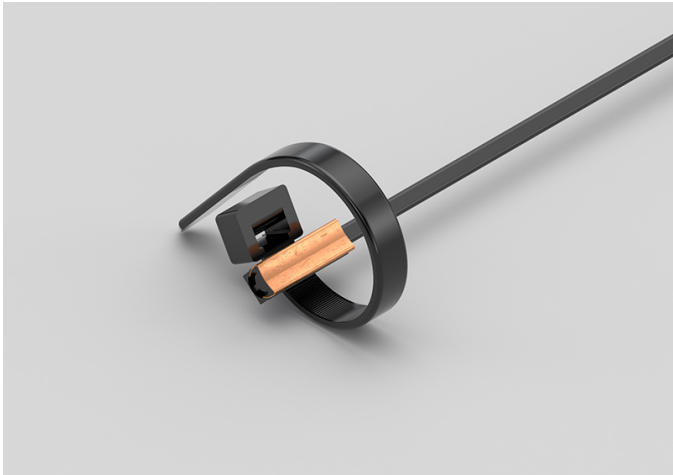
| | |
|----------------------------|--|
| TEMPERATURE RANGE | (-50 +120)°C |
| MODEL | IP67 |
| SENSOR | NTC |
| CAPSULE | Diameter 6x50 mm |
| CABLE | TPE flat |
| TERMINITIONS | Tin-plated, tips, connectors (other terminations available on request) |
| RESPONSE TIME | 10 s in non-static liquid at 63.2% (depends on configuration) |
| IDENTIFICATION | Laser on cable, label (customizable) |
| DECLARATIONS OF CONFORMITY | CE MARKING, CONFLICT MINERALS, REACH, REACH, ROHS |

NEI09C

IP55 COPPER PLATE
BRACELET PROBES WITH
METAL CLAMP

PRODUCT FAMILY 30GB16

Probe with bracelet, NTC sensor, TPE flat cable, 6x6x15 mm + copper plate capsule. Suitable for temperature sensing in laboratory equipment and machinery.



TECHNICAL DATA

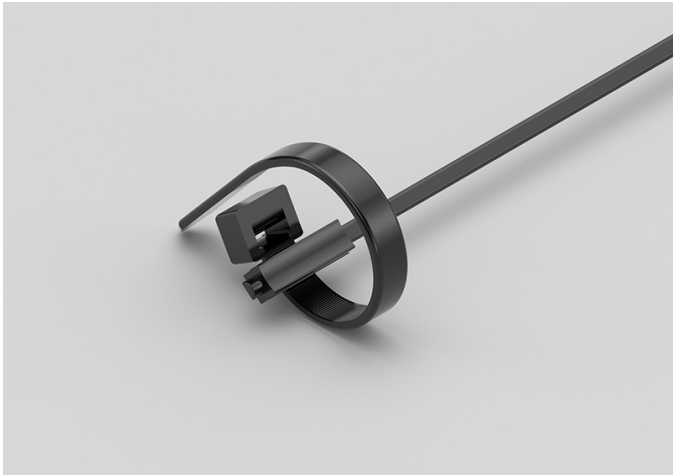
| | |
|----------------------------|--|
| TEMPERATURE RANGE | (-50 +120)°C |
| MODEL | Bracelet |
| SENSOR | NTC |
| CAPSULE | 6x6x15 mm + copper plate |
| CABLE | TPE flat |
| TERMINITIONS | Tin-plated, tips, connectors (other terminations available on request) |
| RESPONSE TIME | 10 s in non-static liquid at 63.2% (depends on configuration) |
| IDENTIFICATION | Laser on cable, label (customizable) |
| DECLARATIONS OF CONFORMITY | CE MARKING, CONFLICT MINERALS, REACH, REACH, ROHS |

NEI10C

IP67 RUBBER BRACELET PROBES WITH METAL CLAMP

PRODUCT FAMILY 30GB08

Probe with bracelet, NTC sensor, TPE flat cable, 6x6x15 mm capsule. Suitable for temperature sensing in laboratory equipment and machinery, in heating applications and in the food field.



TECHNICAL DATA

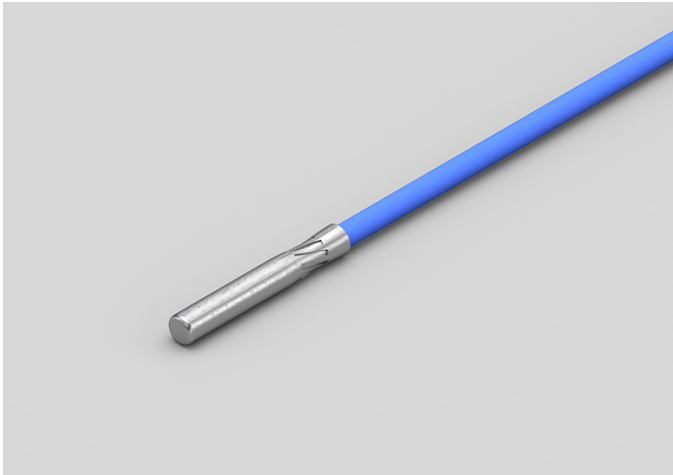
| | |
|----------------------------|--|
| TEMPERATURE RANGE | (-50 +120)°C |
| MODEL | Bracelet |
| SENSOR | NTC |
| CAPSULE | 6x6x15 mm |
| CABLE | TPE flat |
| TERMINITIONS | Tin-plated, tips, connectors (other terminations available on request) |
| RESPONSE TIME | 10 s in non-static liquid at 63.2% (depends on configuration) |
| IDENTIFICATION | Laser on cable, label (customizable) |
| DECLARATIONS OF CONFORMITY | CE MARKING, CONFLICT MINERALS, REACH, REACH, ROHS |

RGB15C

PROBES WITH STANDARD METAL CAPSULE

PRODUCT FAMILY 15CA05

Probe with steel capsule, NTC sensor, in silicone cable, diameter 6x40 mm capsule. Suitable for temperature sensing in refrigeration and air conditioning applications, in air quality control applications, in heating applications and in the food field.



TECHNICAL DATA

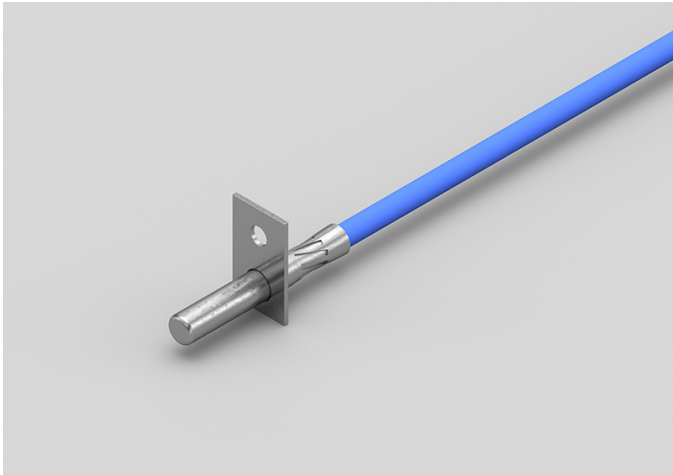
| | |
|----------------------------|--|
| TEMPERATURE RANGE | (-50 +200)°C |
| MODEL | Steel capsule |
| SENSOR | NTC |
| CAPSULE | Diameter 6x40 mm |
| CABLE | Silicone |
| TERMINITIONS | Tin-plated, tips, connectors (other terminations available on request) |
| RESPONSE TIME | 10 s in non-static liquid at 63.2% (depends on configuration) |
| IDENTIFICATION | Laser on cable, label (customizable) |
| DECLARATIONS OF CONFORMITY | CE MARKING, CONFLICT MINERALS, MOCA, REACH, REACH, ROHS |

RGB26C

METAL CAPSULE PROBES WITH FLANGE

PRODUCT FAMILY 15CA25

Contact probe with NTC sensor, in silicone cable, diameter 6x40 mm capsule. Suitable for temperature sensing in refrigeration and air conditioning applications and in the food field.



TECHNICAL DATA

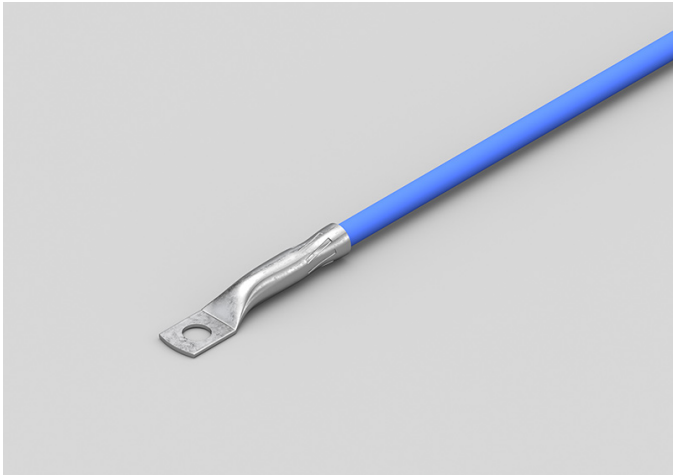
| | |
|----------------------------|--|
| TEMPERATURE RANGE | (-50 +200)°C |
| MODEL | Contact |
| SENSOR | NTC |
| CAPSULE | Diameter 6x40 mm |
| CABLE | Silicone |
| TERMINITIONS | Tin-plated, tips, connectors (other terminations available on request) |
| RESPONSE TIME | 10 s in non-static liquid at 63.2% (depends on configuration) |
| IDENTIFICATION | Laser on cable, label (customizable) |
| DECLARATIONS OF CONFORMITY | CE MARKING, CONFLICT MINERALS, MOCA, REACH, REACH, ROHS |

RGB27C

STANDARD EYELET PROBES

PRODUCT FAMILY 15C005

Contact probe with NTC sensor, in silicone cable, diameter 6x40 mm capsule. Suitable for temperature sensing in refrigeration and air conditioning applications and in the food field.



TECHNICAL DATA

| | |
|----------------------------|--|
| TEMPERATURE RANGE | (-50 +200)°C |
| MODEL | Contact |
| SENSOR | NTC |
| CAPSULE | Diameter 6x40 mm |
| CABLE | Silicone |
| TERMINITIONS | Tin-plated, tips, connectors (other terminations available on request) |
| RESPONSE TIME | 10 s in non-static liquid at 63.2% (depends on configuration) |
| IDENTIFICATION | Laser on cable, label (customizable) |
| DECLARATIONS OF CONFORMITY | CE MARKING, CONFLICT MINERALS, MOCA, REACH, REACH, ROHS |

RGM04C

PROBES WITH WELDED
THREADED CONNECTION

PRODUCT FAMILY 15CR05

Probe with connector, NTC sensor, in silicone cable, diameter 4x40 mm capsule. Suitable for temperature sensing in heating applications and in the food field.



TECHNICAL DATA

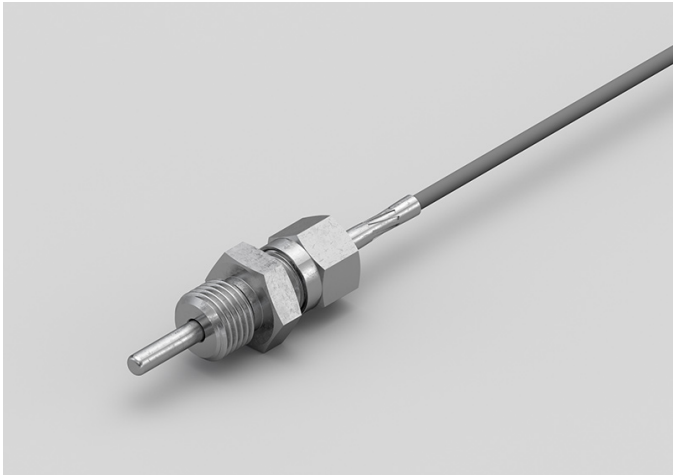
| | |
|----------------------------|--|
| TEMPERATURE RANGE | (-50 +200)°C |
| MODEL | With connector |
| SENSOR | NTC |
| CAPSULE | Diameter 4x40 mm |
| CABLE | Silicone |
| TERMINITIONS | Tin-plated, tips, connectors (other terminations available on request) |
| RESPONSE TIME | 10 s in non-static liquid at 63.2% (depends on configuration) |
| IDENTIFICATION | Laser on cable, label (customizable) |
| DECLARATIONS OF CONFORMITY | CE MARKING, CONFLICT MINERALS, REACH, REACH, ROHS |

RGM05C

PROBES WITH SLIDING
THREADED CONNECTION

PRODUCT FAMILY 15CR10

Probe with connector, NTC sensor, in silicone cable, diameter 4x40 mm capsule. Suitable for temperature sensing in heating applications and in the food field.



TECHNICAL DATA

| | |
|----------------------------|--|
| TEMPERATURE RANGE | (-50 +200)°C |
| MODEL | With connector |
| SENSOR | NTC |
| CAPSULE | Diameter 4x40 mm |
| CABLE | Silicone |
| TERMINITIONS | Tin-plated, tips, connectors (other terminations available on request) |
| RESPONSE TIME | 10 s in non-static liquid at 63.2% (depends on configuration) |
| IDENTIFICATION | Laser on cable, label (customizable) |
| DECLARATIONS OF CONFORMITY | CE MARKING, CONFLICT MINERALS, REACH, REACH, ROHS |

RG001C

STANDARD EYELET PROBES

PRODUCT FAMILY 15C005

Contact probe with NTC sensor, in silicone cable, diameter 4x40 mm capsule. Suitable for temperature sensing in air quality control applications and in the field of renewable energy.



TECHNICAL DATA

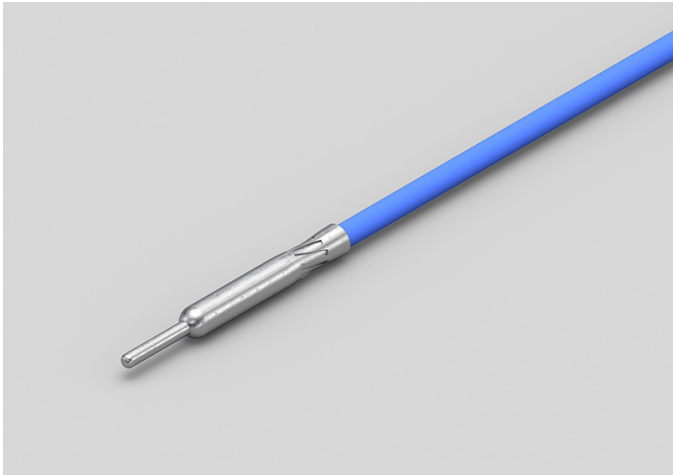
| | |
|----------------------------|--|
| TEMPERATURE RANGE | (-50 +200)°C |
| MODEL | Contact |
| SENSOR | NTC |
| CAPSULE | Diameter 4x40 mm |
| CABLE | Silicone |
| TERMINITIONS | Tin-plated, tips, connectors (other terminations available on request) |
| RESPONSE TIME | 10 s in non-static liquid at 63.2% (depends on configuration) |
| IDENTIFICATION | Laser on cable, label (customizable) |
| DECLARATIONS OF CONFORMITY | CE MARKING, CONFLICT MINERALS, MOCA, REACH, REACH, ROHS |

RGR01C

PROBES WITH TAPERED
METAL CAPSULE

PRODUCT FAMILY 15CA20

Probe with steel capsule, NTC sensor, in silicone cable, diameter 3X15 mm + diameter 6X40 mm capsule. Suitable for temperature sensing in air quality control applications and in the field of renewable energy.



TECHNICAL DATA

| | |
|----------------------------|--|
| TEMPERATURE RANGE | (-50 +200)°C |
| MODEL | Steel capsule |
| SENSOR | NTC |
| CAPSULE | Diameter 3X15 mm + Diameter 6X40 mm |
| CABLE | Silicone |
| TERMINITIONS | Tin-plated, tips, connectors (other terminations available on request) |
| RESPONSE TIME | 10 s in non-static liquid at 63.2% (depends on configuration) |
| IDENTIFICATION | Laser on cable, label (customizable) |
| DECLARATIONS OF CONFORMITY | CE MARKING, CONFLICT MINERALS, REACH, REACH, ROHS |

RGU02C

PROBES WITH FAST METAL CAPSULE

PRODUCT FAMILY 15CA10

Probe with steel capsule, NTC sensor, in silicone cable, diameter 4x40 mm capsule. Suitable for temperature sensing in refrigeration and air conditioning applications, in air quality control applications, in heating applications, in the field of renewable energy and in the food field.



TECHNICAL DATA

| | |
|----------------------------|--|
| TEMPERATURE RANGE | (-50 +200)°C |
| MODEL | Steel capsule |
| SENSOR | NTC |
| CAPSULE | Diameter 4x40 mm |
| CABLE | Silicone |
| TERMINITIONS | Tin-plated, tips, connectors (other terminations available on request) |
| RESPONSE TIME | 10 s in non-static liquid at 63.2% (depends on configuration) |
| IDENTIFICATION | Laser on cable, label (customizable) |
| DECLARATIONS OF CONFORMITY | CE MARKING, CONFLICT MINERALS, MOCA, REACH, REACH, ROHS |

RGU03C

METAL CAPSULE PROBES WITH FLANGE

PRODUCT FAMILY 15CA25

Contact probe with NTC sensor, in silicone cable, diameter 4x40 mm capsule. Suitable for temperature sensing in refrigeration and air conditioning applications, in air quality control applications, in heating applications, in the field of renewable energy and in the food field.



TECHNICAL DATA

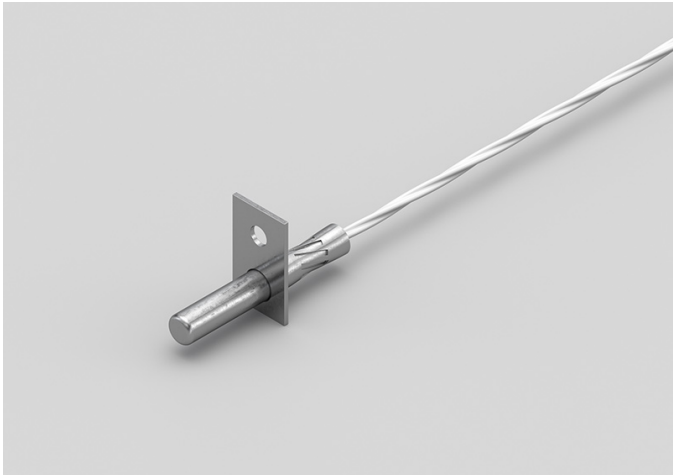
| | |
|----------------------------|--|
| TEMPERATURE RANGE | (-50 +200)°C |
| MODEL | Contact |
| SENSOR | NTC |
| CAPSULE | Diameter 4x40 mm |
| CABLE | Silicone |
| TERMINITIONS | Tin-plated, tips, connectors (other terminations available on request) |
| RESPONSE TIME | 10 s in non-static liquid at 63.2% (depends on configuration) |
| IDENTIFICATION | Laser on cable, label (customizable) |
| DECLARATIONS OF CONFORMITY | CE MARKING, CONFLICT MINERALS, MOCA, REACH, REACH, ROHS |

RTB01C

METAL CAPSULE PROBES
WITH FLANGE

PRODUCT FAMILY 15CA25

Contact probe with NTC sensor, in Teflon cable, diameter 6x40 mm capsule. Suitable for temperature sensing in refrigeration and air conditioning applications, in air quality control applications, in heating applications and in the food field.



TECHNICAL DATA

| | |
|----------------------------|--|
| TEMPERATURE RANGE | (-50 +250)°C |
| MODEL | Contact |
| SENSOR | NTC |
| CAPSULE | Diameter 6x40 mm |
| CABLE | Teflon |
| TERMINITIONS | Tin-plated, tips, connectors (other terminations available on request) |
| RESPONSE TIME | 10 s in non-static liquid at 63.2% (depends on configuration) |
| IDENTIFICATION | Laser on cable, label (customizable) |
| DECLARATIONS OF CONFORMITY | CE MARKING, CONFLICT MINERALS, MOCA, REACH, REACH, ROHS |

RTB02C

PROBES WITH STANDARD METAL CAPSULE

PRODUCT FAMILY 15CA05

Probe with steel capsule, NTC sensor, in Teflon cable, diameter 6x40 mm capsule. Suitable for temperature sensing in heating applications and in the food field.



TECHNICAL DATA

| | |
|----------------------------|--|
| TEMPERATURE RANGE | (-50 +250)°C |
| MODEL | Steel capsule |
| SENSOR | NTC |
| CAPSULE | Diameter 6x40 mm |
| CABLE | Teflon |
| TERMINITIONS | Tin-plated, tips, connectors (other terminations available on request) |
| RESPONSE TIME | 10 s in non-static liquid at 63.2% (depends on configuration) |
| IDENTIFICATION | Laser on cable, label (customizable) |
| DECLARATIONS OF CONFORMITY | CE MARKING, CONFLICT MINERALS, MOCA, REACH, REACH, ROHS |

RTM03C

PROBES WITH WELDED
THREADED CONNECTION

PRODUCT FAMILY 15CR05

Probe with connector, NTC sensor, in Teflon cable, diameter 4x40 mm capsule. Suitable for temperature sensing in refrigeration and air conditioning applications, in the food field and in the industrial field.



TECHNICAL DATA

| | |
|----------------------------|--|
| TEMPERATURE RANGE | (-50 +250)°C |
| MODEL | With connector |
| SENSOR | NTC |
| CAPSULE | Diameter 4x40 mm |
| CABLE | Teflon |
| TERMINITIONS | Tin-plated, tips, connectors (other terminations available on request) |
| RESPONSE TIME | 10 s in non-static liquid at 63.2% (depends on configuration) |
| IDENTIFICATION | Laser on cable, label (customizable) |
| DECLARATIONS OF CONFORMITY | CE MARKING, CONFLICT MINERALS, REACH, REACH, ROHS |

RTM04C

PROBES WITH SLIDING
THREADED CONNECTION

PRODUCT FAMILY 15CR10

Probe with connector, NTC sensor, in Teflon cable, diameter 4x40 mm capsule. Suitable for temperature sensing in heating applications and in the food field.



TECHNICAL DATA

| | |
|----------------------------|--|
| TEMPERATURE RANGE | (-50 +250)°C |
| MODEL | With connector |
| SENSOR | NTC |
| CAPSULE | Diameter 4x40 mm |
| CABLE | Teflon |
| TERMINITIONS | Tin-plated, tips, connectors (other terminations available on request) |
| RESPONSE TIME | 10 s in non-static liquid at 63.2% (depends on configuration) |
| IDENTIFICATION | Laser on cable, label (customizable) |
| DECLARATIONS OF CONFORMITY | CE MARKING, CONFLICT MINERALS, REACH, REACH, ROHS |

RT001C

STANDARD EYELET PROBES

PRODUCT FAMILY 15C005

Contact probe with NTC sensor, in Teflon cable, diameter 6x40 mm capsule. Suitable for temperature sensing in the food field.



TECHNICAL DATA

| | |
|----------------------------|--|
| TEMPERATURE RANGE | (-50 +250)°C |
| MODEL | Contact |
| SENSOR | NTC |
| CAPSULE | Diameter 6x40 mm |
| CABLE | Teflon |
| TERMINITIONS | Tin-plated, tips, connectors (other terminations available on request) |
| RESPONSE TIME | 10 s in non-static liquid at 63.2% (depends on configuration) |
| IDENTIFICATION | Laser on cable, label (customizable) |
| DECLARATIONS OF CONFORMITY | CE MARKING, CONFLICT MINERALS, MOCA, REACH, REACH, ROHS |

RT002C

STANDARD EYELET PROBES

PRODUCT FAMILY 15C005

Contact probe with NTC sensor, in Teflon cable, diameter 4x40 mm capsule. Suitable for temperature sensing in the field of renewable energy.



TECHNICAL DATA

| | |
|----------------------------|--|
| TEMPERATURE RANGE | (-50 +250)°C |
| MODEL | Contact |
| SENSOR | NTC |
| CAPSULE | Diameter 4x40 mm |
| CABLE | Teflon |
| TERMINITIONS | Tin-plated, tips, connectors (other terminations available on request) |
| RESPONSE TIME | 10 s in non-static liquid at 63.2% (depends on configuration) |
| IDENTIFICATION | Laser on cable, label (customizable) |
| DECLARATIONS OF CONFORMITY | CE MARKING, CONFLICT MINERALS, MOCA, REACH, REACH, ROHS |

RTR07C

PROBES WITH TAPERED METAL CAPSULE

PRODUCT FAMILY 15CA20

Probe with steel capsule, NTC sensor, in Teflon cable, diameter 3X15 mm + diameter 6X40 mm capsule. Suitable for temperature sensing in refrigeration and air conditioning applications, in air quality control applications, in heating applications and in the food field.



TECHNICAL DATA

| | |
|----------------------------|--|
| TEMPERATURE RANGE | (-50 +250)°C |
| MODEL | Steel capsule |
| SENSOR | NTC |
| CAPSULE | Diameter 3X15 mm + Diameter 6X40 mm |
| CABLE | Teflon |
| TERMINITIONS | Tin-plated, tips, connectors (other terminations available on request) |
| RESPONSE TIME | 10 s in non-static liquid at 63.2% (depends on configuration) |
| IDENTIFICATION | Laser on cable, label (customizable) |
| DECLARATIONS OF CONFORMITY | CE MARKING, CONFLICT MINERALS, REACH, REACH, ROHS |

RTU03C

PROBES WITH FAST METAL CAPSULE

PRODUCT FAMILY 15CA10

Probe with steel capsule, NTC sensor, in Teflon cable, diameter 4x40 mm capsule. Suitable for temperature sensing in the field of renewable energy.



TECHNICAL DATA

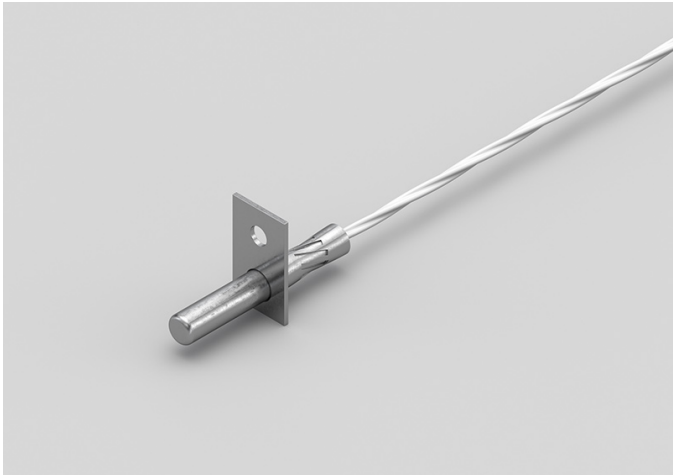
| | |
|----------------------------|--|
| TEMPERATURE RANGE | (-50 +250)°C |
| MODEL | Steel capsule |
| SENSOR | NTC |
| CAPSULE | Diameter 4x40 mm |
| CABLE | Teflon |
| TERMINITIONS | Tin-plated, tips, connectors (other terminations available on request) |
| RESPONSE TIME | 10 s in non-static liquid at 63.2% (depends on configuration) |
| IDENTIFICATION | Laser on cable, label (customizable) |
| DECLARATIONS OF CONFORMITY | CE MARKING, CONFLICT MINERALS, MOCA, REACH, REACH, ROHS |

RTU05C

METAL CAPSULE PROBES
WITH FLANGE

PRODUCT FAMILY 15CA25

Contact probe with NTC sensor, in Teflon cable, diameter 4x40 mm capsule. Suitable for temperature sensing in the field of renewable energy and in the food field.



TECHNICAL DATA

| | |
|----------------------------|--|
| TEMPERATURE RANGE | (-50 +250)°C |
| MODEL | Contact |
| SENSOR | NTC |
| CAPSULE | Diameter 4x40 mm |
| CABLE | Teflon |
| TERMINITIONS | Tin-plated, tips, connectors (other terminations available on request) |
| RESPONSE TIME | 10 s in non-static liquid at 63.2% (depends on configuration) |
| IDENTIFICATION | Laser on cable, label (customizable) |
| DECLARATIONS OF CONFORMITY | CE MARKING, CONFLICT MINERALS, MOCA, REACH, REACH, ROHS |

RVB01C

PROBES WITH STANDARD METAL CAPSULE

PRODUCT FAMILY 15CA05

Probe with steel capsule, NTC sensor, in glass fibre cable, diameter 6x40 mm capsule. Suitable for temperature sensing in refrigeration and air conditioning applications, in the field of renewable energy, in the food field and in the industrial field.



TECHNICAL DATA

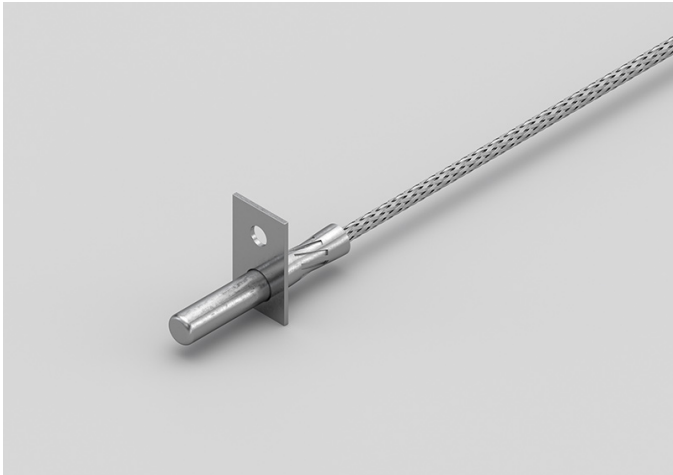
| | |
|----------------------------|--|
| TEMPERATURE RANGE | (0 +300)°C |
| MODEL | Steel capsule |
| SENSOR | NTC |
| CAPSULE | Diameter 6x40 mm |
| CABLE | Glass fibre |
| TERMINITIONS | Tin-plated, tips, connectors (other terminations available on request) |
| RESPONSE TIME | 10 s in non-static liquid at 63.2% (depends on configuration) |
| IDENTIFICATION | Laser on cable, label (customizable) |
| DECLARATIONS OF CONFORMITY | CE MARKING, CONFLICT MINERALS, MOCA, REACH, REACH, ROHS |

RVB02C

METAL CAPSULE PROBES
WITH FLANGE

PRODUCT FAMILY 15CA25

Contact probe with NTC sensor, in glass fibre cable, diameter 6x40 mm capsule. Suitable for temperature sensing in refrigeration and air conditioning applications, in the field of renewable energy, in the food field and in the industrial field.



TECHNICAL DATA

| | |
|----------------------------|--|
| TEMPERATURE RANGE | (0 +300)°C |
| MODEL | Contact |
| SENSOR | NTC |
| CAPSULE | Diameter 6x40 mm |
| CABLE | Glass fibre |
| TERMINITIONS | Tin-plated, tips, connectors (other terminations available on request) |
| RESPONSE TIME | 10 s in non-static liquid at 63.2% (depends on configuration) |
| IDENTIFICATION | Laser on cable, label (customizable) |
| DECLARATIONS OF CONFORMITY | CE MARKING, CONFLICT MINERALS, MOCA, REACH, REACH, ROHS |

RVM01C

PROBES WITH SLIDING
THREADED CONNECTION

PRODUCT FAMILY 15CR10

Probe with connector, NTC sensor, in glass fibre cable, diameter 4x40 mm capsule. Suitable for temperature sensing in heating applications and in the food field.



TECHNICAL DATA

| | |
|----------------------------|--|
| TEMPERATURE RANGE | (0 +300)°C |
| MODEL | With connector |
| SENSOR | NTC |
| CAPSULE | Diameter 4x40 mm |
| CABLE | Glass fibre |
| TERMINITIONS | Tin-plated, tips, connectors (other terminations available on request) |
| RESPONSE TIME | 10 s in non-static liquid at 63.2% (depends on configuration) |
| IDENTIFICATION | Laser on cable, label (customizable) |
| DECLARATIONS OF CONFORMITY | CE MARKING, CONFLICT MINERALS, REACH, REACH, ROHS |

RVM04C

PROBES WITH WELDED
THREADED CONNECTION

PRODUCT FAMILY 15CR05

Probe with connector, NTC sensor, in glass fibre cable, diameter 4x40 mm capsule. Suitable for temperature sensing in the industrial field.



TECHNICAL DATA

| | |
|----------------------------|--|
| TEMPERATURE RANGE | (0 +300)°C |
| MODEL | With connector |
| SENSOR | NTC |
| CAPSULE | Diameter 4x40 mm |
| CABLE | Glass fibre |
| TERMINITIONS | Tin-plated, tips, connectors (other terminations available on request) |
| RESPONSE TIME | 10 s in non-static liquid at 63.2% (depends on configuration) |
| IDENTIFICATION | Laser on cable, label (customizable) |
| DECLARATIONS OF CONFORMITY | CE MARKING, CONFLICT MINERALS, REACH, REACH, ROHS |

RVO01C

STANDARD EYELET PROBES

PRODUCT FAMILY 15C005

Contact probe with NTC sensor, in glass fibre cable, diameter 6x40 mm capsule. Suitable for temperature sensing in heating applications, in the food field and in the industrial field.



TECHNICAL DATA

| | |
|----------------------------|--|
| TEMPERATURE RANGE | (0 +300)°C |
| MODEL | Contact |
| SENSOR | NTC |
| CAPSULE | Diameter 6x40 mm |
| CABLE | Glass fibre |
| TERMINITIONS | Tin-plated, tips, connectors (other terminations available on request) |
| RESPONSE TIME | 10 s in non-static liquid at 63.2% (depends on configuration) |
| IDENTIFICATION | Laser on cable, label (customizable) |
| DECLARATIONS OF CONFORMITY | CE MARKING, CONFLICT MINERALS, REACH, REACH, ROHS |

RVO02C

STANDARD EYELET PROBES

PRODUCT FAMILY 15C005

Contact probe with NTC sensor, in glass fibre cable, diameter 4x40 mm capsule. Suitable for temperature sensing in the industrial field.



TECHNICAL DATA

| | |
|----------------------------|--|
| TEMPERATURE RANGE | (0 +300)°C |
| MODEL | Contact |
| SENSOR | NTC |
| CAPSULE | Diameter 4x40 mm |
| CABLE | Glass fibre |
| TERMINITIONS | Tin-plated, tips, connectors (other terminations available on request) |
| RESPONSE TIME | 10 s in non-static liquid at 63.2% (depends on configuration) |
| IDENTIFICATION | Laser on cable, label (customizable) |
| DECLARATIONS OF CONFORMITY | CE MARKING, CONFLICT MINERALS, REACH, REACH, ROHS |

RVR00C

PROBES WITH TAPERED METAL CAPSULE

PRODUCT FAMILY 15CA20

Probe with steel capsule, NTC sensor, in glass fibre cable, diameter 3X15 mm + diameter 6X40 mm capsule. Suitable for temperature sensing in the industrial field.



TECHNICAL DATA

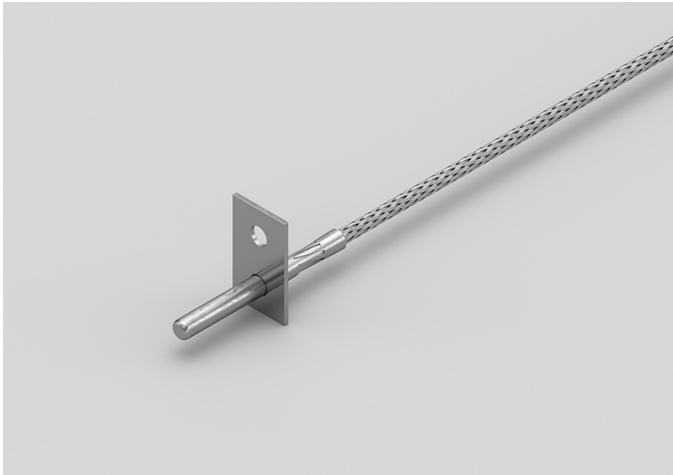
| | |
|----------------------------|--|
| TEMPERATURE RANGE | (0 +300)°C |
| MODEL | Steel capsule |
| SENSOR | NTC |
| CAPSULE | Diameter 3X15 mm + Diameter 6X40 mm |
| CABLE | Glass fibre |
| TERMINITIONS | Tin-plated, tips, connectors (other terminations available on request) |
| RESPONSE TIME | 10 s in non-static liquid at 63.2% (depends on configuration) |
| IDENTIFICATION | Laser on cable, label (customizable) |
| DECLARATIONS OF CONFORMITY | CE MARKING, CONFLICT MINERALS, REACH, REACH, ROHS |

RVU02C

METAL CAPSULE PROBES WITH FLANGE

PRODUCT FAMILY 15CA25

Contact probe with NTC sensor, in glass fibre cable, diameter 4x40 mm capsule. Suitable for temperature sensing in heating applications, in the food field and in the industrial field.



TECHNICAL DATA

| | |
|----------------------------|--|
| TEMPERATURE RANGE | (0 +300)°C |
| MODEL | Contact |
| SENSOR | NTC |
| CAPSULE | Diameter 4x40 mm |
| CABLE | Glass fibre |
| TERMINITIONS | Tin-plated, tips, connectors (other terminations available on request) |
| RESPONSE TIME | 10 s in non-static liquid at 63.2% (depends on configuration) |
| IDENTIFICATION | Laser on cable, label (customizable) |
| DECLARATIONS OF CONFORMITY | CE MARKING, CONFLICT MINERALS, MOCA, REACH, REACH, ROHS |



SACET S.R.L.
Via del Candel, 55/D
32100 Belluno (BL) Italy

C.F. E P.I. 00654590256

PHONE NUMBER +39 0437 33166

EMAIL info@sacet-probes.com