

CATALOG

TEMPERATURE PROBES

APPLICATION AIR QUALITY

CATEGORY STERILIZATION AND DISINFECTION

CATEGORY

STERILIZATION AND DISINFECTION

General.agroalimentare_01

ADB00C

IP68 RUBBER PROBES Ø6X40..50/60 MM STEEL

PRODUCT FAMILY 30GC07

IP68 probe with PTC sensor, TPE round cable, diameter 6x40 mm capsule. Suitable for temperature sensing in refrigeration and air conditioning applications, in air quality control applications, in heating applications, in the food field and in the industrial field.



TECHNICAL DATA

TEMPERATURE RANGE	(-50 +110)°C
MODEL	IP68
SENSOR	PTC
CAPSULE	Diameter 6x40 mm
CABLE	TPE round
TERMINITIONS	Tin-plated, tips, connectors (other terminations available on request)
RESPONSE TIME	10 s in non-static liquid at 63.2% (depends on configuration)
IDENTIFICATION	Laser on cable, label (customizable)
DECLARATIONS OF CONFORMITY	CE MARKING, CONFLICT MINERALS, REACH, REACH, ROHS

ADE00C

IP68 RUBBER PROBES

Ø5X20 MM RUBBER CAPSULE

PRODUCT FAMILY 30GC05

IP68 probe with PTC sensor, TPE round cable, diameter 5x20 mm capsule. Suitable for temperature sensing in refrigeration and air conditioning applications, in air quality control applications, in heating applications, in the food field and in the industrial field.



TECHNICAL DATA

TEMPERATURE RANGE	(-50 +110)°C
MODEL	IP68
SENSOR	PTC
CAPSULE	Diameter 5x20 mm
CABLE	TPE round
TERMINITIONS	Tin-plated, tips, connectors (other terminations available on request)
RESPONSE TIME	10 s in non-static liquid at 63.2% (depends on configuration)
IDENTIFICATION	Laser on cable, label (customizable)
DECLARATIONS OF CONFORMITY	CE MARKING, CONFLICT MINERALS, REACH, REACH, ROHS

ADH01C

IP68 RUBBER PROBES Ø6X40..50/60 MM STEEL

PRODUCT FAMILY 30GC07

IP68 probe with PTC sensor, TPE round cable, diameter 6x50 mm capsule. Suitable for temperature sensing in refrigeration and air conditioning applications, in air quality control applications, in heating applications, in the food field and in the industrial field.



TECHNICAL DATA

TEMPERATURE RANGE	(-50 +110)°C
MODEL	IP68
SENSOR	PTC
CAPSULE	Diameter 6x50 mm
CABLE	TPE round
TERMINITIONS	Tin-plated, tips, connectors (other terminations available on request)
RESPONSE TIME	10 s in non-static liquid at 63.2% (depends on configuration)
IDENTIFICATION	Laser on cable, label (customizable)
DECLARATIONS OF CONFORMITY	CE MARKING, CONFLICT MINERALS, REACH, REACH, ROHS

ADH04C

IP68 RUBBER PROBES Ø6X20 MM STEEL CAPSULE

PRODUCT FAMILY 30GC06

IP68 probe with PTC sensor, TPE round cable, diameter 6x20 mm capsule. Suitable for temperature sensing in laboratory equipment and machinery, in refrigeration and air conditioning applications, in air quality control applications, in heating applications, in the food field and in the industrial field.



TECHNICAL DATA

TEMPERATURE RANGE	(-50 +110)°C
MODEL	IP68
SENSOR	PTC
CAPSULE	Diameter 6x20 mm
CABLE	TPE round
TERMINITIONS	Tin-plated, tips, connectors (other terminations available on request)
RESPONSE TIME	10 s in non-static liquid at 63.2% (depends on configuration)
IDENTIFICATION	Laser on cable, label (customizable)
DECLARATIONS OF CONFORMITY	CE MARKING, CONFLICT MINERALS, REACH, REACH, ROHS

GDB00C

IP68 RUBBER PROBES Ø6X40..50/60 MM STEEL

PRODUCT FAMILY 30GC07

IP68 probe with PT100 sensor, TPE round cable, diameter 6x40 mm capsule. Suitable for temperature sensing in laboratory equipment and machinery, in refrigeration and air conditioning applications, in air quality control applications, in heating applications, in the food field and in the industrial field.



TECHNICAL DATA

TEMPERATURE RANGE	(-50 +110)°C
MODEL	IP68
SENSOR	PT100
CAPSULE	Diameter 6x40 mm
CABLE	TPE round
TERMINITIONS	Tin-plated, tips, connectors (other terminations available on request)
RESPONSE TIME	10 s in non-static liquid at 63.2% (depends on configuration)
IDENTIFICATION	Laser on cable, label (customizable)
DECLARATIONS OF CONFORMITY	CE MARKING, CONFLICT MINERALS, REACH, REACH, ROHS

GDE03C

IP68 RUBBER PROBES

Ø5X20 MM RUBBER CAPSULE

PRODUCT FAMILY 30GC05

IP68 probe with PT100 sensor, TPE round cable, diameter 5x20 mm capsule. Suitable for temperature sensing in laboratory equipment and machinery, in refrigeration and air conditioning applications, in air quality control applications, in heating applications, in the food field and in the industrial field.



TECHNICAL DATA

TEMPERATURE RANGE	(-50 +110)°C
MODEL	IP68
SENSOR	PT100
CAPSULE	Diameter 5x20 mm
CABLE	TPE round
TERMINITIONS	Tin-plated, tips, connectors (other terminations available on request)
RESPONSE TIME	10 s in non-static liquid at 63.2% (depends on configuration)
IDENTIFICATION	Laser on cable, label (customizable)
DECLARATIONS OF CONFORMITY	CE MARKING, CONFLICT MINERALS, REACH, REACH, ROHS

GDH00C

IP68 RUBBER PROBES Ø6X40..50/60 MM STEEL

PRODUCT FAMILY 30GC07

IP68 probe with PT100 sensor, TPE round cable, diameter 6x50 mm capsule. Suitable for temperature sensing in laboratory equipment and machinery, in refrigeration and air conditioning applications, in air quality control applications, in heating applications, in the food field and in the industrial field.



TECHNICAL DATA

TEMPERATURE RANGE	(-50 +110)°C
MODEL	IP68
SENSOR	PT100
CAPSULE	Diameter 6x50 mm
CABLE	TPE round
TERMINITIONS	Tin-plated, tips, connectors (other terminations available on request)
RESPONSE TIME	10 s in non-static liquid at 63.2% (depends on configuration)
IDENTIFICATION	Laser on cable, label (customizable)
DECLARATIONS OF CONFORMITY	CE MARKING, CONFLICT MINERALS, REACH, REACH, ROHS

IDE03C

IP68 RUBBER PROBES

Ø5X20 MM RUBBER CAPSULE

PRODUCT FAMILY 30GC05

IP68 probe with PT1000 sensor, TPE round cable, diameter 5x20 mm capsule. Suitable for temperature sensing in refrigeration and air conditioning applications, in air quality control applications, in heating applications, in the food field and in the industrial field.



TECHNICAL DATA

TEMPERATURE RANGE	(-50 +110)°C
MODEL	IP68
SENSOR	PT1000
CAPSULE	Diameter 5x20 mm
CABLE	TPE round
TERMINITIONS	Tin-plated, tips, connectors (other terminations available on request)
RESPONSE TIME	10 s in non-static liquid at 63.2% (depends on configuration)
IDENTIFICATION	Laser on cable, label (customizable)
DECLARATIONS OF CONFORMITY	CE MARKING, CONFLICT MINERALS, REACH, REACH, ROHS

NDE00C

IP68 RUBBER PROBES

Ø5X20 MM RUBBER CAPSULE

PRODUCT FAMILY 30GC05

IP68 probe with NTC sensor, TPE round cable, diameter 5x20 mm capsule. Suitable for temperature sensing in refrigeration and air conditioning applications, in air quality control applications, in heating applications, in the food field and in the industrial field.



TECHNICAL DATA

TEMPERATURE RANGE	(-50 +110)°C
MODEL	IP68
SENSOR	NTC
CAPSULE	Diameter 5x20 mm
CABLE	TPE round
TERMINITIONS	Tin-plated, tips, connectors (other terminations available on request)
RESPONSE TIME	10 s in non-static liquid at 63.2% (depends on configuration)
IDENTIFICATION	Laser on cable, label (customizable)
DECLARATIONS OF CONFORMITY	CE MARKING, CONFLICT MINERALS, REACH, REACH, ROHS

NDH01C

IP68 RUBBER PROBES Ø6X20 MM STEEL CAPSULE

PRODUCT FAMILY 30GC06

IP68 probe with NTC sensor, TPE round cable, diameter 6x20 mm capsule. Suitable for temperature sensing in refrigeration and air conditioning applications, in air quality control applications, in heating applications, in the food field and in the industrial field.



TECHNICAL DATA

TEMPERATURE RANGE	(-50 +110)°C
MODEL	IP68
SENSOR	NTC
CAPSULE	Diameter 6x20 mm
CABLE	TPE round
TERMINITIONS	Tin-plated, tips, connectors (other terminations available on request)
RESPONSE TIME	10 s in non-static liquid at 63.2% (depends on configuration)
IDENTIFICATION	Laser on cable, label (customizable)
DECLARATIONS OF CONFORMITY	CE MARKING, CONFLICT MINERALS, REACH, REACH, ROHS

NDH02C

IP68 RUBBER PROBES Ø6X40..50/60 MM STEEL

PRODUCT FAMILY 30GC07

IP68 probe with NTC sensor, TPE round cable, diameter 6x50 mm capsule. Suitable for temperature sensing in refrigeration and air conditioning applications, in air quality control applications, in heating applications, in the food field and in the industrial field.



TECHNICAL DATA

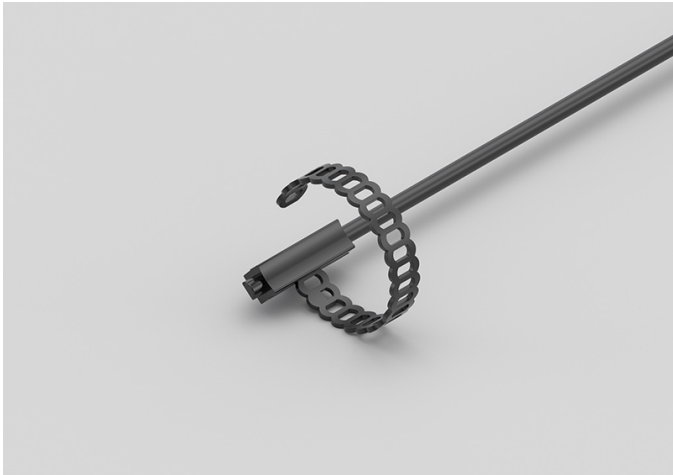
TEMPERATURE RANGE	(-50 +110)°C
MODEL	IP68
SENSOR	NTC
CAPSULE	Diameter 6x50 mm
CABLE	TPE round
TERMINITIONS	Tin-plated, tips, connectors (other terminations available on request)
RESPONSE TIME	10 s in non-static liquid at 63.2% (depends on configuration)
IDENTIFICATION	Laser on cable, label (customizable)
DECLARATIONS OF CONFORMITY	CE MARKING, CONFLICT MINERALS, REACH, REACH, ROHS

NDI00C

IP68 RUBBER BRACELET PROBES

PRODUCT FAMILY 30GB05

Probe with bracelet, NTC sensor, TPE round cable, 6x6x15 mm capsule. Suitable for temperature sensing in refrigeration and air conditioning applications, in heating applications and in the field of renewable energy.



TECHNICAL DATA

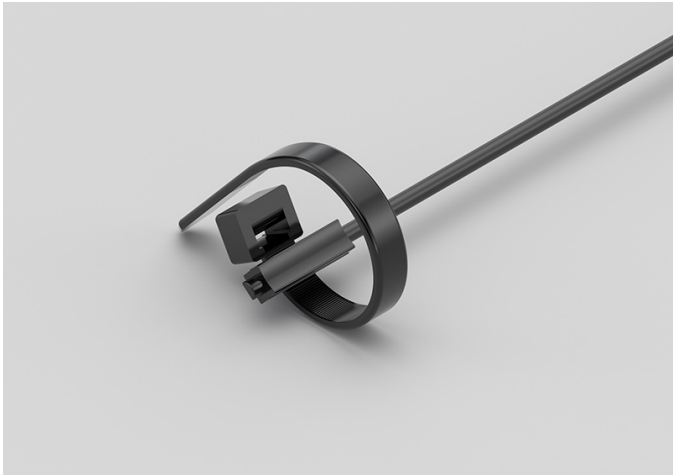
TEMPERATURE RANGE	(-50 +110)°C
MODEL	Bracelet
SENSOR	NTC
CAPSULE	6x6x15 mm
CABLE	TPE round
TERMINITIONS	Tin-plated, tips, connectors (other terminations available on request)
RESPONSE TIME	10 s in non-static liquid at 63.2% (depends on configuration)
IDENTIFICATION	Laser on cable, label (customizable)
DECLARATIONS OF CONFORMITY	CE MARKING, CONFLICT MINERALS, REACH, REACH, ROHS

NDI06C

IP68 RUBBER BRACELET
PROBE WITH METAL
CLAMP

PRODUCT FAMILY 30GB06

Probe with bracelet, NTC sensor, TPE round cable, 6x6x15 mm capsule. Suitable for temperature sensing in refrigeration and air conditioning applications, in heating applications and in the field of renewable energy.



TECHNICAL DATA

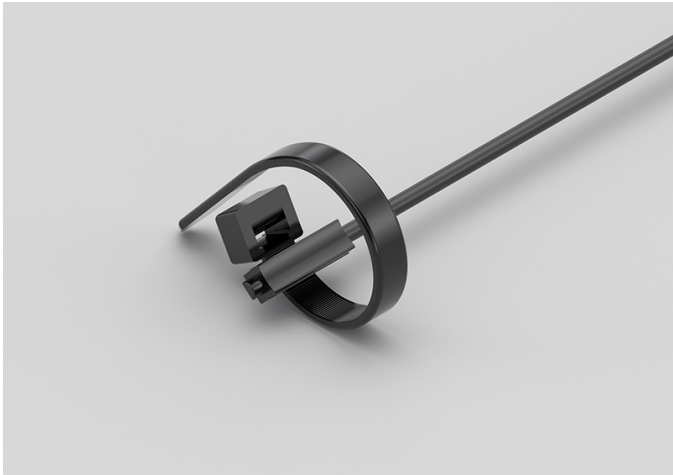
TEMPERATURE RANGE	(-50 +110)°C
MODEL	Bracelet
SENSOR	NTC
CAPSULE	6x6x15 mm
CABLE	TPE round
TERMINITIONS	Tin-plated, tips, connectors (other terminations available on request)
RESPONSE TIME	10 s in non-static liquid at 63.2% (depends on configuration)
IDENTIFICATION	Laser on cable, label (customizable)
DECLARATIONS OF CONFORMITY	CE MARKING, CONFLICT MINERALS, REACH, REACH, ROHS

ADI04C

IP68 RUBBER BRACELET PROBE WITH METAL CLAMP

PRODUCT FAMILY 30GB06

Probe with bracelet, PTC sensor, TPE round cable, 6x6x15 mm capsule. Suitable for temperature sensing in laboratory equipment and machinery, in heating applications, in the field of renewable energy and in the food field.



TECHNICAL DATA

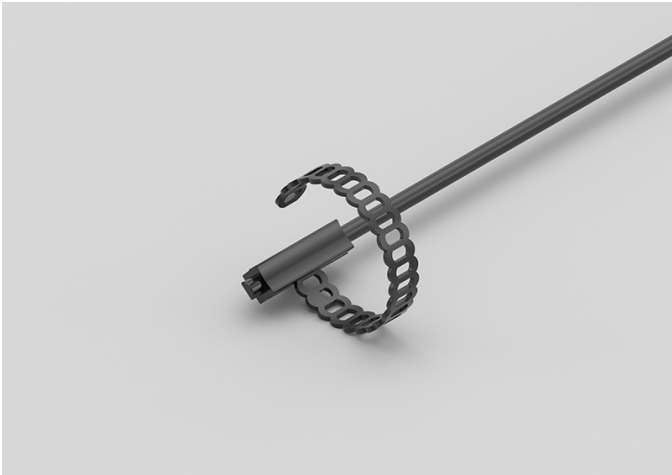
TEMPERATURE RANGE	(-50 +110)°C
MODEL	Bracelet
SENSOR	PTC
CAPSULE	6x6x15 mm
CABLE	TPE round
TERMINITIONS	Tin-plated, tips, connectors (other terminations available on request)
RESPONSE TIME	10 s in non-static liquid at 63.2% (depends on configuration)
IDENTIFICATION	Laser on cable, label (customizable)
DECLARATIONS OF CONFORMITY	CE MARKING, CONFLICT MINERALS, REACH, REACH, ROHS

ADI05C

IP68 RUBBER BRACELET PROBES

PRODUCT FAMILY 30GB05

Probe with bracelet, PTC sensor, TPE round cable, 6x6x15 mm capsule. Suitable for temperature sensing in laboratory equipment and machinery, in heating applications, in the field of renewable energy and in the food field.



TECHNICAL DATA

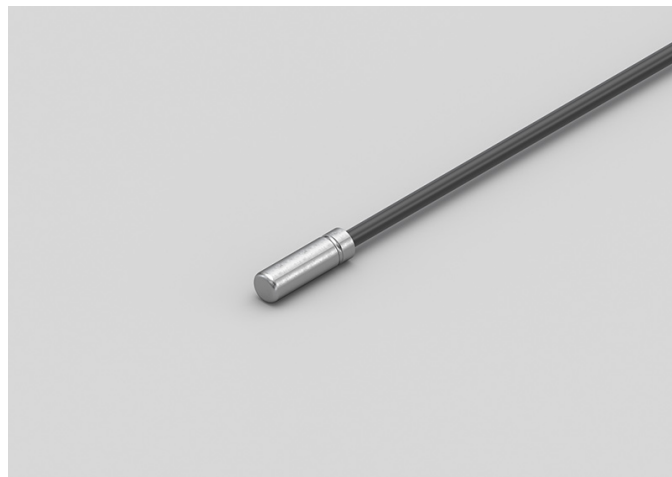
TEMPERATURE RANGE	(-50 +110)°C
MODEL	Bracelet
SENSOR	PTC
CAPSULE	6x6x15 mm
CABLE	TPE round
TERMINITIONS	Tin-plated, tips, connectors (other terminations available on request)
RESPONSE TIME	10 s in non-static liquid at 63.2% (depends on configuration)
IDENTIFICATION	Laser on cable, label (customizable)
DECLARATIONS OF CONFORMITY	CE MARKING, CONFLICT MINERALS, REACH, REACH, ROHS

GDH02C

IP68 RUBBER PROBES Ø6X20 MM STEEL CAPSULE

PRODUCT FAMILY 30GC06

IP68 probe with PT100 sensor, TPE round cable, diameter 6x20 mm capsule. Suitable for temperature sensing in refrigeration and air conditioning applications, in air quality control applications, in heating applications, in the food field and in the industrial field.



TECHNICAL DATA

TEMPERATURE RANGE	(-50 +110)°C
MODEL	IP68
SENSOR	PT100
CAPSULE	Diameter 6x20 mm
CABLE	TPE round
TERMINITIONS	Tin-plated, tips, connectors (other terminations available on request)
RESPONSE TIME	10 s in non-static liquid at 63.2% (depends on configuration)
IDENTIFICATION	Laser on cable, label (customizable)
DECLARATIONS OF CONFORMITY	CE MARKING, CONFLICT MINERALS, REACH, REACH, ROHS

GDI03C

IP68 RUBBER BRACELET PROBES

PRODUCT FAMILY 30GB05

Probe with bracelet, PT100 sensor, TPE round cable, 6x6x15 mm capsule. Suitable for temperature sensing in laboratory equipment and machinery, in heating applications and in the food field.



TECHNICAL DATA

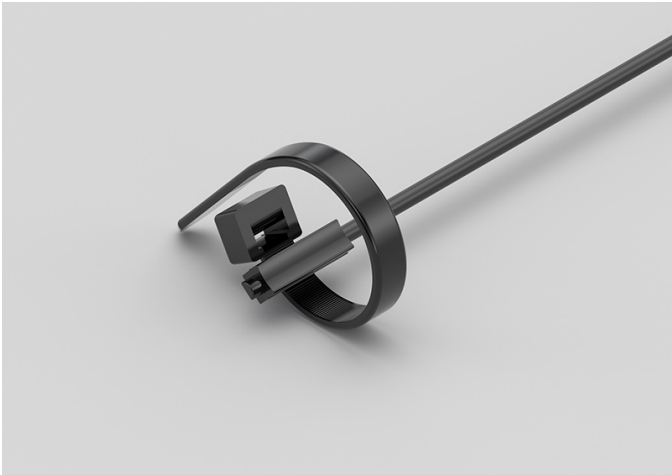
TEMPERATURE RANGE	(-50 +110)°C
MODEL	Bracelet
SENSOR	PT100
CAPSULE	6x6x15 mm
CABLE	TPE round
TERMINITIONS	Tin-plated, tips, connectors (other terminations available on request)
RESPONSE TIME	10 s in non-static liquid at 63.2% (depends on configuration)
IDENTIFICATION	Laser on cable, label (customizable)
DECLARATIONS OF CONFORMITY	CE MARKING, CONFLICT MINERALS, REACH, REACH, ROHS

GDI05C

IP68 RUBBER BRACELET
PROBE WITH METAL
CLAMP

PRODUCT FAMILY 30GB06

Probe with bracelet, PT100 sensor, TPE round cable, 6x6x15 mm capsule. Suitable for temperature sensing in refrigeration and air conditioning applications, in air quality control applications, in the field of renewable energy and in the food field.



TECHNICAL DATA

TEMPERATURE RANGE	(-50 +110)°C
MODEL	Bracelet
SENSOR	PT100
CAPSULE	6x6x15 mm
CABLE	TPE round
TERMINITIONS	Tin-plated, tips, connectors (other terminations available on request)
RESPONSE TIME	10 s in non-static liquid at 63.2% (depends on configuration)
IDENTIFICATION	Laser on cable, label (customizable)
DECLARATIONS OF CONFORMITY	CE MARKING, CONFLICT MINERALS, REACH, REACH, ROHS

IDB04C

IP68 RUBBER PROBES Ø6X40..50/60 MM STEEL

PRODUCT FAMILY 30GC07

IP68 probe with PT1000 sensor, TPE round cable, diameter 6x40 mm capsule. Suitable for temperature sensing in laboratory equipment and machinery.



TECHNICAL DATA

TEMPERATURE RANGE	(-50 +110)°C
MODEL	IP68
SENSOR	PT1000
CAPSULE	Diameter 6x40 mm
CABLE	TPE round
TERMINITIONS	Tin-plated, tips, connectors (other terminations available on request)
RESPONSE TIME	10 s in non-static liquid at 63.2% (depends on configuration)
IDENTIFICATION	Laser on cable, label (customizable)
DECLARATIONS OF CONFORMITY	CE MARKING, CONFLICT MINERALS, REACH, REACH, ROHS

IDH05C

IP68 RUBBER PROBES Ø6X20 MM STEEL CAPSULE

PRODUCT FAMILY 30GC06

IP68 probe with PT1000 sensor, TPE round cable, diameter 6x20 mm capsule. Suitable for temperature sensing in refrigeration and air conditioning applications, in air quality control applications, in heating applications, in the food field and in the industrial field.



TECHNICAL DATA

TEMPERATURE RANGE	(-50 +110)°C
MODEL	IP68
SENSOR	PT1000
CAPSULE	Diameter 6x20 mm
CABLE	TPE round
TERMINITIONS	Tin-plated, tips, connectors (other terminations available on request)
RESPONSE TIME	10 s in non-static liquid at 63.2% (depends on configuration)
IDENTIFICATION	Laser on cable, label (customizable)
DECLARATIONS OF CONFORMITY	CE MARKING, CONFLICT MINERALS, REACH, REACH, ROHS

IDH06C

IP68 RUBBER PROBES Ø6X40..50/60 MM STEEL

PRODUCT FAMILY 30GC07

IP68 probe with PT1000 sensor, TPE round cable, diameter 6x50 mm capsule. Suitable for temperature sensing in refrigeration and air conditioning applications, in air quality control applications, in heating applications, in the food field and in the industrial field.



TECHNICAL DATA

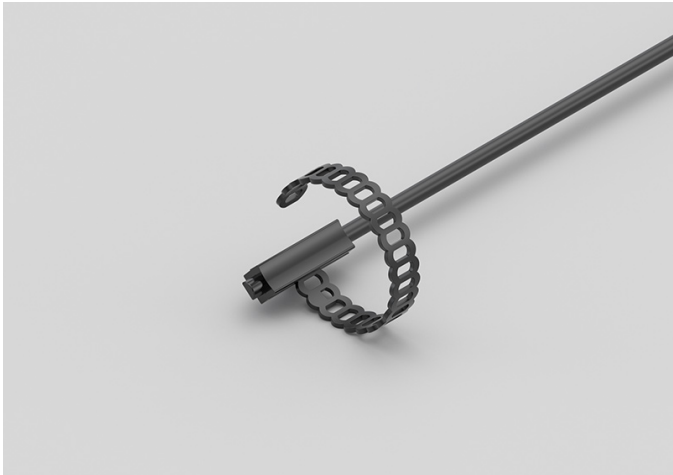
TEMPERATURE RANGE	(-50 +110)°C
MODEL	IP68
SENSOR	PT1000
CAPSULE	Diameter 6x50 mm
CABLE	TPE round
TERMINITIONS	Tin-plated, tips, connectors (other terminations available on request)
RESPONSE TIME	10 s in non-static liquid at 63.2% (depends on configuration)
IDENTIFICATION	Laser on cable, label (customizable)
DECLARATIONS OF CONFORMITY	CE MARKING, CONFLICT MINERALS, REACH, REACH, ROHS

IDI01C

IP68 RUBBER BRACELET PROBES

PRODUCT FAMILY 30GB05

Probe with bracelet, PT1000 sensor, TPE round cable, 6x6x15 mm capsule. Suitable for temperature sensing in air quality control applications.



TECHNICAL DATA

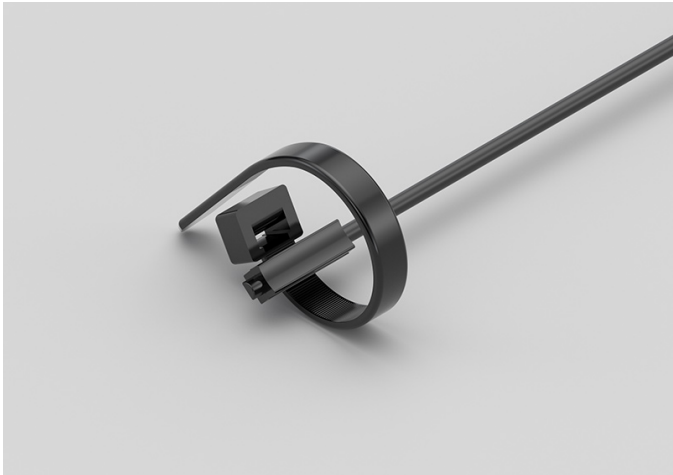
TEMPERATURE RANGE	(-50 +110)°C
MODEL	Bracelet
SENSOR	PT1000
CAPSULE	6x6x15 mm
CABLE	TPE round
TERMINITIONS	Tin-plated, tips, connectors (other terminations available on request)
RESPONSE TIME	10 s in non-static liquid at 63.2% (depends on configuration)
IDENTIFICATION	Laser on cable, label (customizable)
DECLARATIONS OF CONFORMITY	CE MARKING, CONFLICT MINERALS, REACH, REACH, ROHS

IDI02C

IP68 RUBBER BRACELET PROBE WITH METAL CLAMP

PRODUCT FAMILY 30GB06

Probe with bracelet, PT1000 sensor, TPE round cable, 6x6x15 mm capsule. Suitable for temperature sensing in air quality control applications.



TECHNICAL DATA

TEMPERATURE RANGE	(-50 +110)°C
MODEL	Bracelet
SENSOR	PT1000
CAPSULE	6x6x15 mm
CABLE	TPE round
TERMINITIONS	Tin-plated, tips, connectors (other terminations available on request)
RESPONSE TIME	10 s in non-static liquid at 63.2% (depends on configuration)
IDENTIFICATION	Laser on cable, label (customizable)
DECLARATIONS OF CONFORMITY	CE MARKING, CONFLICT MINERALS, REACH, REACH, ROHS

NDB15C

IP68 RUBBER PROBES
Ø6X40..50/60 MM STEEL

PRODUCT FAMILY 30GC07

IP68 probe with NTC sensor, TPE round cable, diameter 6x40 mm capsule. Suitable for temperature sensing in laboratory equipment and machinery.



TECHNICAL DATA

TEMPERATURE RANGE	(-50 +110)°C
MODEL	IP68
SENSOR	NTC
CAPSULE	Diameter 6x40 mm
CABLE	TPE round
TERMINITIONS	Tin-plated, tips, connectors (other terminations available on request)
RESPONSE TIME	10 s in non-static liquid at 63.2% (depends on configuration)
IDENTIFICATION	Laser on cable, label (customizable)
DECLARATIONS OF CONFORMITY	CE MARKING, CONFLICT MINERALS, REACH, REACH, ROHS



SACET S.R.L.
Via del Candel, 55/D
32100 Belluno (BL) Italy

C.F. E P.I. 00654590256

PHONE NUMBER +39 0437 33166

EMAIL info@sacet-probes.com