



# CATALOG

TEMPERATURE PROBES

**APPLICATION** TECHNOLOGY

# APPLICATION

## TECHNOLOGY

---

In an increasingly connected world, geographical distance is completely cancelled out. Technologies are becoming more and more advanced, allowing action to be taken at any time at any distance. Information travels in the cloud in real time, allowing action to be taken on any anomalies without having to travel on site.

# CATEGORY

## EQUIPMENT AND TOOLS

---

**IVB03C**

# PROBES WITH STANDARD METAL CAPSULE

**PRODUCT FAMILY 15CA05**

Probe with steel capsule, PT1000 sensor, in glass fibre cable, diameter 6x40 mm capsule. Suitable for temperature sensing in refrigeration and air conditioning applications and in heating applications.



## TECHNICAL DATA

TEMPERATURE RANGE	(0 +350)°C
MODEL	Steel capsule
SENSOR	PT1000
CAPSULE	Diameter 6x40 mm
CABLE	Glass fibre
TERMINITIONS	Tin-plated, tips, connectors (other terminations available on request)
RESPONSE TIME	10 s in non-static liquid at 63.2% (depends on configuration)
IDENTIFICATION	Laser on cable, label (customizable)
DECLARATIONS OF CONFORMITY	CE MARKING, CONFLICT MINERALS, MOCA, REACH, REACH, ROHS

**GDU04C**

# PROBES WITH FAST METAL CAPSULE

**PRODUCT FAMILY 15CA10**

Probe with steel capsule, PT100 sensor, TPE round cable, diameter 4x40 mm capsule. Suitable for temperature sensing in heating applications, in the field of renewable energy and in the food field.



## TECHNICAL DATA

TEMPERATURE RANGE	(-50 +110)°C
MODEL	Steel capsule
SENSOR	PT100
CAPSULE	Diameter 4x40 mm
CABLE	TPE round
TERMINITIONS	Tin-plated, tips, connectors (other terminations available on request)
RESPONSE TIME	10 s in non-static liquid at 63.2% (depends on configuration)
IDENTIFICATION	Laser on cable, label (customizable)
DECLARATIONS OF CONFORMITY	CE MARKING, CONFLICT MINERALS, MOCA, REACH, REACH, ROHS

GGB07C

# PROBES WITH STANDARD METAL CAPSULE

PRODUCT FAMILY 15CA05

Probe with steel capsule, PT100 sensor, in silicone cable, diameter 6x40 mm capsule. Suitable for temperature sensing in heating applications and in the food field.



## TECHNICAL DATA

TEMPERATURE RANGE	(-50 +200)°C
MODEL	Steel capsule
SENSOR	PT100
CAPSULE	Diameter 6x40 mm
CABLE	Silicone
TERMINITIONS	Tin-plated, tips, connectors (other terminations available on request)
RESPONSE TIME	10 s in non-static liquid at 63.2% (depends on configuration)
IDENTIFICATION	Laser on cable, label (customizable)
DECLARATIONS OF CONFORMITY	CE MARKING, CONFLICT MINERALS, REACH, REACH, ROHS

**GGR07C**

# PROBES WITH TAPERED METAL CAPSULE

## PRODUCT FAMILY 15CA20

Probe with steel capsule, PT100 sensor, in silicone cable, diameter 3X15 mm + diameter 6X40 mm capsule. Suitable for temperature sensing in laboratory equipment and machinery, in refrigeration and air conditioning applications, in air quality control applications, in heating applications and in the food field.



## TECHNICAL DATA

TEMPERATURE RANGE	(-50 +200)°C
MODEL	Steel capsule
SENSOR	PT100
CAPSULE	Diameter 3X15 mm + Diameter 6X40 mm
CABLE	Silicone
TERMINITIONS	Tin-plated, tips, connectors (other terminations available on request)
RESPONSE TIME	10 s in non-static liquid at 63.2% (depends on configuration)
IDENTIFICATION	Laser on cable, label (customizable)
DECLARATIONS OF CONFORMITY	CE MARKING, CONFLICT MINERALS, REACH, REACH, ROHS

**GGU02C**

# PROBES WITH FAST METAL CAPSULE

**PRODUCT FAMILY 15CA10**

Probe with steel capsule, PT100 sensor, in silicone cable, diameter 4x40 mm capsule. Suitable for temperature sensing in laboratory equipment and machinery, in refrigeration and air conditioning applications, in air quality control applications, in heating applications, in the field of renewable energy and in the food field.



## TECHNICAL DATA

TEMPERATURE RANGE	(-50 +200)°C
MODEL	Steel capsule
SENSOR	PT100
CAPSULE	Diameter 4x40 mm
CABLE	Silicone
TERMINITIONS	Tin-plated, tips, connectors (other terminations available on request)
RESPONSE TIME	10 s in non-static liquid at 63.2% (depends on configuration)
IDENTIFICATION	Laser on cable, label (customizable)
DECLARATIONS OF CONFORMITY	CE MARKING, CONFLICT MINERALS, MOCA, REACH, REACH, ROHS



GPB02C

PROBES WITH STANDARD METAL CAPSULE

PRODUCT FAMILY 15CA05

Probe with steel capsule, PT100 sensor, in PVC cable, diameter 6x40 mm capsule. Suitable for temperature sensing in laboratory equipment and machinery, in refrigeration and air conditioning applications, in air quality control applications, in heating applications and in the food field.



TECHNICAL DATA

TEMPERATURE RANGE	(-30 +105)°C
MODEL	Steel capsule
SENSOR	PT100
CAPSULE	Diameter 6x40 mm
CABLE	PVC
TERMINITIONS	Tin-plated, tips, connectors (other terminations available on request)
RESPONSE TIME	10 s in non-static liquid at 63.2% (depends on configuration)
IDENTIFICATION	Laser on cable, label (customizable)
DECLARATIONS OF CONFORMITY	CE MARKING, CONFLICT MINERALS, MOCA, REACH, REACH, ROHS

**GPR02C**

# PROBES WITH TAPERED METAL CAPSULE

**PRODUCT FAMILY 15CA20**

Probe with steel capsule, PT100 sensor, in PVC cable, diameter 3X15 mm + diameter 6X40 mm capsule. Suitable for temperature sensing in laboratory equipment and machinery, in refrigeration and air conditioning applications, in air quality control applications, in heating applications and in the food field.



## TECHNICAL DATA

TEMPERATURE RANGE	(-30 +105)°C
MODEL	Steel capsule
SENSOR	PT100
CAPSULE	Diameter 3X15 mm + Diameter 6X40 mm
CABLE	PVC
TERMINITIONS	Tin-plated, tips, connectors (other terminations available on request)
RESPONSE TIME	10 s in non-static liquid at 63.2% (depends on configuration)
IDENTIFICATION	Laser on cable, label (customizable)
DECLARATIONS OF CONFORMITY	CE MARKING, CONFLICT MINERALS, REACH, REACH, ROHS

GPU00C

PROBES WITH FAST METAL CAPSULE

PRODUCT FAMILY 15CA10

Probe with steel capsule, PT100 sensor, in PVC cable, diameter 4x40 mm capsule. Suitable for temperature sensing in laboratory equipment and machinery, in refrigeration and air conditioning applications, in air quality control applications, in heating applications, in the field of renewable energy and in the food field.



TECHNICAL DATA

TEMPERATURE RANGE	(-30 +80)°C
MODEL	Steel capsule
SENSOR	PT100
CAPSULE	Diameter 4x40 mm
CABLE	PVC
TERMINITIONS	Tin-plated, tips, connectors (other terminations available on request)
RESPONSE TIME	10 s in non-static liquid at 63.2% (depends on configuration)
IDENTIFICATION	Laser on cable, label (customizable)
DECLARATIONS OF CONFORMITY	CE MARKING, CONFLICT MINERALS, MOCA, REACH, REACH, ROHS

**GTB00C**

# PROBES WITH STANDARD METAL CAPSULE

**PRODUCT FAMILY 15CA05**

Probe with steel capsule, PT100 sensor, in Teflon cable, diameter 6x40 mm capsule. Suitable for temperature sensing in laboratory equipment and machinery, in refrigeration and air conditioning applications, in air quality control applications, in heating applications, in the food field and in the industrial field.



## TECHNICAL DATA

TEMPERATURE RANGE	(-50 +250)°C
MODEL	Steel capsule
SENSOR	PT100
CAPSULE	Diameter 6x40 mm
CABLE	Teflon
TERMINITIONS	Tin-plated, tips, connectors (other terminations available on request)
RESPONSE TIME	10 s in non-static liquid at 63.2% (depends on configuration)
IDENTIFICATION	Laser on cable, label (customizable)
DECLARATIONS OF CONFORMITY	CE MARKING, CONFLICT MINERALS, MOCA, REACH, REACH, ROHS

**GTR02C**

# PROBES WITH TAPERED METAL CAPSULE

**PRODUCT FAMILY 15CA20**

Probe with steel capsule, PT100 sensor, in Teflon cable, diameter 3X15 mm + diameter 6X40 mm capsule. Suitable for temperature sensing in refrigeration and air conditioning applications, in air quality control applications, in heating applications, in the food field and in the industrial field.



## TECHNICAL DATA

TEMPERATURE RANGE	(-50 +250)°C
MODEL	Steel capsule
SENSOR	PT100
CAPSULE	Diameter 3X15 mm + Diameter 6X40 mm
CABLE	Teflon
TERMINITIONS	Tin-plated, tips, connectors (other terminations available on request)
RESPONSE TIME	10 s in non-static liquid at 63.2% (depends on configuration)
IDENTIFICATION	Laser on cable, label (customizable)
DECLARATIONS OF CONFORMITY	CE MARKING, CONFLICT MINERALS, REACH, REACH, ROHS

**GTU01C**

# PROBES WITH FAST METAL CAPSULE

**PRODUCT FAMILY 15CA10**

Probe with steel capsule, PT100 sensor, in Teflon cable, diameter 4x40 mm capsule. Suitable for temperature sensing in laboratory equipment and machinery, in refrigeration and air conditioning applications, in air quality control applications, in heating applications, in the field of renewable energy, in the food field and in the industrial field.



## TECHNICAL DATA

TEMPERATURE RANGE	(-50 +250)°C
MODEL	Steel capsule
SENSOR	PT100
CAPSULE	Diameter 4x40 mm
CABLE	Teflon
TERMINITIONS	Tin-plated, tips, connectors (other terminations available on request)
RESPONSE TIME	10 s in non-static liquid at 63.2% (depends on configuration)
IDENTIFICATION	Laser on cable, label (customizable)
DECLARATIONS OF CONFORMITY	CE MARKING, CONFLICT MINERALS, MOCA, REACH, REACH, ROHS

**GTX04A**

# PROBES WITH EXPOSED DOUBLE-INSULATION SENSOR

**PRODUCT FAMILY 10EP10**

Probe with exposed sensor, PT100 sensor, in Teflon cable, without capsule capsule. Suitable for temperature sensing in laboratory equipment and machinery, in the electrical motors field and in the field of renewable energy.



## TECHNICAL DATA

TEMPERATURE RANGE	(-50 +250)°C
MODEL	Exposed sensor
SENSOR	PT100
CAPSULE	Without capsule
CABLE	Teflon
TERMINITIONS	Tin-plated, tips, connectors (other terminations available on request)
RESPONSE TIME	10 s in non-static liquid at 63.2% (depends on configuration)
IDENTIFICATION	Laser on cable, label (customizable)
DECLARATIONS OF CONFORMITY	CE MARKING, CONFLICT MINERALS, REACH, REACH, ROHS

GVB03C

PROBES WITH STANDARD METAL CAPSULE

PRODUCT FAMILY 15CA05

Probe with steel capsule, PT100 sensor, in glass fibre cable, diameter 6x40 mm capsule. Suitable for temperature sensing in laboratory equipment and machinery, in refrigeration and air conditioning applications, in air quality control applications, in heating applications and in the food field.



TECHNICAL DATA

TEMPERATURE RANGE	(0 +350)°C
MODEL	Steel capsule
SENSOR	PT100
CAPSULE	Diameter 6x40 mm
CABLE	Glass fibre
TERMINITIONS	Tin-plated, tips, connectors (other terminations available on request)
RESPONSE TIME	10 s in non-static liquid at 63.2% (depends on configuration)
IDENTIFICATION	Laser on cable, label (customizable)
DECLARATIONS OF CONFORMITY	CE MARKING, CONFLICT MINERALS, MOCA, REACH, REACH, ROHS



**GVR07C**

# PROBES WITH TAPERED METAL CAPSULE

## PRODUCT FAMILY 15CA20

Probe with steel capsule, PT100 sensor, in glass fibre cable, diameter 3X15 mm + diameter 6X40 mm capsule. Suitable for temperature sensing in laboratory equipment and machinery, in refrigeration and air conditioning applications, in air quality control applications, in heating applications and in the food field.



## TECHNICAL DATA

TEMPERATURE RANGE	(0 +350)°C
MODEL	Steel capsule
SENSOR	PT100
CAPSULE	Diameter 3X15 mm + Diameter 6X40 mm
CABLE	Glass fibre
TERMINITIONS	Tin-plated, tips, connectors (other terminations available on request)
RESPONSE TIME	10 s in non-static liquid at 63.2% (depends on configuration)
IDENTIFICATION	Laser on cable, label (customizable)
DECLARATIONS OF CONFORMITY	CE MARKING, CONFLICT MINERALS, REACH, REACH, ROHS

**GVU07C**

# PROBES WITH FAST METAL CAPSULE

## PRODUCT FAMILY 15CA10

Probe with steel capsule, PT100 sensor, in glass fibre cable, diameter 4x40 mm capsule. Suitable for temperature sensing in laboratory equipment and machinery, in refrigeration and air conditioning applications, in air quality control applications, in heating applications, in the field of renewable energy and in the food field.



## TECHNICAL DATA

TEMPERATURE RANGE	(0 +350)°C
MODEL	Steel capsule
SENSOR	PT100
CAPSULE	Diameter 4x40 mm
CABLE	Glass fibre
TERMINITIONS	Tin-plated, tips, connectors (other terminations available on request)
RESPONSE TIME	10 s in non-static liquid at 63.2% (depends on configuration)
IDENTIFICATION	Laser on cable, label (customizable)
DECLARATIONS OF CONFORMITY	CE MARKING, CONFLICT MINERALS, MOCA, REACH, REACH, ROHS

**IDU04C**

# PROBES WITH FAST METAL CAPSULE

**PRODUCT FAMILY 15CA10**

Probe with steel capsule, PT1000 sensor, TPE round cable, diameter 4x40 mm capsule. Suitable for temperature sensing in refrigeration and air conditioning applications, in air quality control applications, in the field of renewable energy and in the food field.



## TECHNICAL DATA

TEMPERATURE RANGE	(-50 +110)°C
MODEL	Steel capsule
SENSOR	PT1000
CAPSULE	Diameter 4x40 mm
CABLE	TPE round
TERMINITIONS	Tin-plated, tips, connectors (other terminations available on request)
RESPONSE TIME	10 s in non-static liquid at 63.2% (depends on configuration)
IDENTIFICATION	Laser on cable, label (customizable)
DECLARATIONS OF CONFORMITY	CE MARKING, CONFLICT MINERALS, MOCA, REACH, REACH, ROHS

IGB01C

PROBES WITH STANDARD METAL CAPSULE

PRODUCT FAMILY 15CA05

Probe with steel capsule, PT1000 sensor, in silicone cable, diameter 6x40 mm capsule. Suitable for temperature sensing in refrigeration and air conditioning applications, in heating applications, in the field of renewable energy, in the food field and in the industrial field.



TECHNICAL DATA

TEMPERATURE RANGE	(-50 +200)°C
MODEL	Steel capsule
SENSOR	PT1000
CAPSULE	Diameter 6x40 mm
CABLE	Silicone
TERMINITIONS	Tin-plated, tips, connectors (other terminations available on request)
RESPONSE TIME	10 s in non-static liquid at 63.2% (depends on configuration)
IDENTIFICATION	Laser on cable, label (customizable)
DECLARATIONS OF CONFORMITY	CE MARKING, CONFLICT MINERALS, MOCA, REACH, REACH, ROHS

## IGR03C

# PROBES WITH TAPERED METAL CAPSULE

## PRODUCT FAMILY 15CA20

Probe with steel capsule, PT1000 sensor, in silicone cable, diameter 3X15 mm + diameter 6X40 mm capsule. Suitable for temperature sensing in refrigeration and air conditioning applications, in heating applications, in the food field and in the industrial field.



## TECHNICAL DATA

TEMPERATURE RANGE	(-50 +200)°C
MODEL	Steel capsule
SENSOR	PT1000
CAPSULE	Diameter 3X15 mm + Diameter 6X40 mm
CABLE	Silicone
TERMINITIONS	Tin-plated, tips, connectors (other terminations available on request)
RESPONSE TIME	10 s in non-static liquid at 63.2% (depends on configuration)
IDENTIFICATION	Laser on cable, label (customizable)
DECLARATIONS OF CONFORMITY	CE MARKING, CONFLICT MINERALS, REACH, REACH, ROHS

## IGU02C

# PROBES WITH FAST METAL CAPSULE

## PRODUCT FAMILY 15CA10

Probe with steel capsule, PT1000 sensor, in silicone cable, diameter 4x40 mm capsule. Suitable for temperature sensing in heating applications and in the food field.



## TECHNICAL DATA

TEMPERATURE RANGE	(-50 +200)°C
MODEL	Steel capsule
SENSOR	PT1000
CAPSULE	Diameter 4x40 mm
CABLE	Silicone
TERMINITIONS	Tin-plated, tips, connectors (other terminations available on request)
RESPONSE TIME	10 s in non-static liquid at 63.2% (depends on configuration)
IDENTIFICATION	Laser on cable, label (customizable)
DECLARATIONS OF CONFORMITY	CE MARKING, CONFLICT MINERALS, MOCA, REACH, REACH, ROHS

## IPB02C

# PROBES WITH STANDARD METAL CAPSULE

## PRODUCT FAMILY 15CA05

Probe with steel capsule, PT1000 sensor, in PVC cable, diameter 6x40 mm capsule. Suitable for temperature sensing in laboratory equipment and machinery, in refrigeration and air conditioning applications, in air quality control applications, in the field of renewable energy and in the food field.



## TECHNICAL DATA

TEMPERATURE RANGE	(-30 +105)°C
MODEL	Steel capsule
SENSOR	PT1000
CAPSULE	Diameter 6x40 mm
CABLE	PVC
TERMINITIONS	Tin-plated, tips, connectors (other terminations available on request)
RESPONSE TIME	10 s in non-static liquid at 63.2% (depends on configuration)
IDENTIFICATION	Laser on cable, label (customizable)
DECLARATIONS OF CONFORMITY	CE MARKING, CONFLICT MINERALS, MOCA, REACH, REACH, ROHS

**IPR01C**

# PROBES WITH TAPERED METAL CAPSULE

**PRODUCT FAMILY 15CA20**

Probe with steel capsule, PT1000 sensor, in PVC cable, diameter 3X15 mm + diameter 6X40 mm capsule. Suitable for temperature sensing in laboratory equipment and machinery, in heating applications, in the field of renewable energy and in the food field.



## TECHNICAL DATA

TEMPERATURE RANGE	(-30 +105)°C
MODEL	Steel capsule
SENSOR	PT1000
CAPSULE	Diameter 3X15 mm + Diameter 6X40 mm
CABLE	PVC
TERMINITIONS	Tin-plated, tips, connectors (other terminations available on request)
RESPONSE TIME	10 s in non-static liquid at 63.2% (depends on configuration)
IDENTIFICATION	Laser on cable, label (customizable)
DECLARATIONS OF CONFORMITY	CE MARKING, CONFLICT MINERALS, REACH, REACH, ROHS



IPU00C

PROBES WITH FAST METAL CAPSULE

PRODUCT FAMILY 15CA10

Probe with steel capsule, PT1000 sensor, in PVC cable, diameter 4x40 mm capsule. Suitable for temperature sensing in laboratory equipment and machinery, in heating applications, in the field of renewable energy, in the food field and in the industrial field.



TECHNICAL DATA

TEMPERATURE RANGE	(-30 +80)°C
MODEL	Steel capsule
SENSOR	PT1000
CAPSULE	Diameter 4x40 mm
CABLE	PVC
TERMINITIONS	Tin-plated, tips, connectors (other terminations available on request)
RESPONSE TIME	10 s in non-static liquid at 63.2% (depends on configuration)
IDENTIFICATION	Laser on cable, label (customizable)
DECLARATIONS OF CONFORMITY	CE MARKING, CONFLICT MINERALS, MOCA, REACH, REACH, ROHS

ITB01C

PROBES WITH STANDARD METAL CAPSULE

PRODUCT FAMILY 15CA05

Probe with steel capsule, PT1000 sensor, in Teflon cable, diameter 6x40 mm capsule. Suitable for temperature sensing in laboratory equipment and machinery.



TECHNICAL DATA

TEMPERATURE RANGE	(-50 +250)°C
MODEL	Steel capsule
SENSOR	PT1000
CAPSULE	Diameter 6x40 mm
CABLE	Teflon
TERMINITIONS	Tin-plated, tips, connectors (other terminations available on request)
RESPONSE TIME	10 s in non-static liquid at 63.2% (depends on configuration)
IDENTIFICATION	Laser on cable, label (customizable)
DECLARATIONS OF CONFORMITY	CE MARKING, CONFLICT MINERALS, MOCA, REACH, REACH, ROHS

**ITR00C**

# PROBES WITH TAPERED METAL CAPSULE

**PRODUCT FAMILY 15CA20**

Probe with steel capsule, PT1000 sensor, in Teflon cable, diameter 3X15 mm + diameter 6X40 mm capsule. Suitable for temperature sensing in laboratory equipment and machinery, in refrigeration and air conditioning applications, in air quality control applications, in the field of renewable energy and in the food field.



## TECHNICAL DATA

TEMPERATURE RANGE	(-50 +250)°C
MODEL	Steel capsule
SENSOR	PT1000
CAPSULE	Diameter 3X15 mm + Diameter 6X40 mm
CABLE	Teflon
TERMINITIONS	Tin-plated, tips, connectors (other terminations available on request)
RESPONSE TIME	10 s in non-static liquid at 63.2% (depends on configuration)
IDENTIFICATION	Laser on cable, label (customizable)
DECLARATIONS OF CONFORMITY	CE MARKING, CONFLICT MINERALS, REACH, REACH, ROHS

## ITU05C

# PROBES WITH FAST METAL CAPSULE

## PRODUCT FAMILY 15CA10

Probe with steel capsule, PT1000 sensor, in Teflon cable, diameter 4x40 mm capsule. Suitable for temperature sensing in laboratory equipment and machinery, in refrigeration and air conditioning applications, in air quality control applications, in the field of renewable energy and in the food field.



## TECHNICAL DATA

TEMPERATURE RANGE	(-50 +250)°C
MODEL	Steel capsule
SENSOR	PT1000
CAPSULE	Diameter 4x40 mm
CABLE	Teflon
TERMINITIONS	Tin-plated, tips, connectors (other terminations available on request)
RESPONSE TIME	10 s in non-static liquid at 63.2% (depends on configuration)
IDENTIFICATION	Laser on cable, label (customizable)
DECLARATIONS OF CONFORMITY	CE MARKING, CONFLICT MINERALS, MOCA, REACH, REACH, ROHS

**IVR01C**

# PROBES WITH TAPERED METAL CAPSULE

**PRODUCT FAMILY 15CA20**

Probe with steel capsule, PT1000 sensor, in glass fibre cable, diameter 3X15 mm + diameter 6X40 mm capsule. Suitable for temperature sensing in laboratory equipment and machinery.



## TECHNICAL DATA

TEMPERATURE RANGE	(0 +350)°C
MODEL	Steel capsule
SENSOR	PT1000
CAPSULE	Diameter 3X15 mm + Diameter 6X40 mm
CABLE	Glass fibre
TERMINITIONS	Tin-plated, tips, connectors (other terminations available on request)
RESPONSE TIME	10 s in non-static liquid at 63.2% (depends on configuration)
IDENTIFICATION	Laser on cable, label (customizable)
DECLARATIONS OF CONFORMITY	CE MARKING, CONFLICT MINERALS, REACH, REACH, ROHS

**IVU07C**

# PROBES WITH FAST METAL CAPSULE

## PRODUCT FAMILY 15CA10

Probe with steel capsule, PT1000 sensor, in glass fibre cable, diameter 4x40 mm capsule. Suitable for temperature sensing in laboratory equipment and machinery, in heating applications, in the food field and in the industrial field.



## TECHNICAL DATA

TEMPERATURE RANGE	(0 +350)°C
MODEL	Steel capsule
SENSOR	PT1000
CAPSULE	Diameter 4x40 mm
CABLE	Glass fibre
TERMINITIONS	Tin-plated, tips, connectors (other terminations available on request)
RESPONSE TIME	10 s in non-static liquid at 63.2% (depends on configuration)
IDENTIFICATION	Laser on cable, label (customizable)
DECLARATIONS OF CONFORMITY	CE MARKING, CONFLICT MINERALS, MOCA, REACH, REACH, ROHS



# CATEGORY

## GENERAL APPLIANCES

---

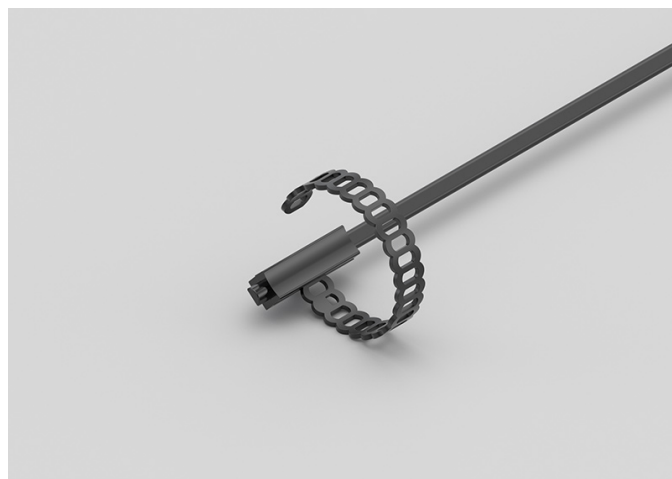


**AEI01C**

# IP67 RUBBER BRACELET PROBES

## PRODUCT FAMILY 30GB07

Probe with bracelet, PTC sensor, TPE flat cable, 6x6x15 mm capsule. Suitable for temperature sensing in laboratory equipment and machinery, in refrigeration and air conditioning applications, in air quality control applications, in heating applications, in the food field and in the industrial field.



## TECHNICAL DATA

TEMPERATURE RANGE	(-50 +120)°C
MODEL	Bracelet
SENSOR	PTC
CAPSULE	6x6x15 mm
CABLE	TPE flat
TERMINITIONS	Tin-plated, tips, connectors (other terminations available on request)
RESPONSE TIME	10 s in non-static liquid at 63.2% (depends on configuration)
IDENTIFICATION	Laser on cable, label (customizable)
DECLARATIONS OF CONFORMITY	CE MARKING, CONFLICT MINERALS, REACH, REACH, ROHS

APD00C



PRODUCT FAMILY 40PC10

Probe with double-insulation capsule, PTC sensor, in PVC cable, diameter 7x26 mm capsule. Suitable for temperature sensing in laboratory equipment and machinery.



TECHNICAL DATA

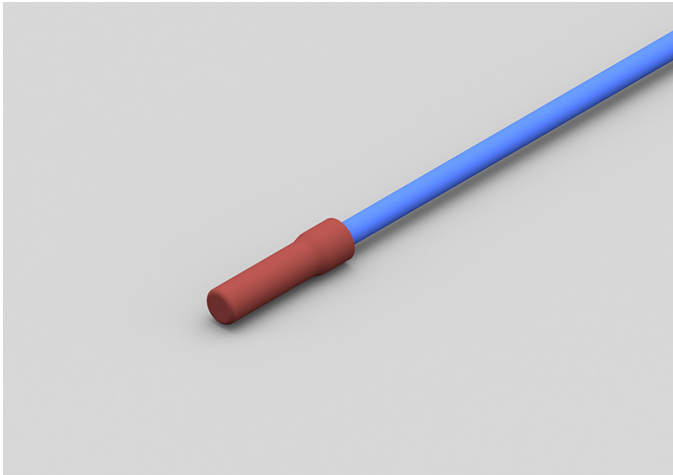
TEMPERATURE RANGE	(-30 +80)°C
MODEL	Double-insulated capsule
SENSOR	PTC
CAPSULE	Diameter 7x26 mm
CABLE	PVC
TERMINITIONS	Tin-plated, tips, connectors (other terminations available on request)
RESPONSE TIME	10 s in non-static liquid at 63.2% (depends on configuration)
IDENTIFICATION	Laser on cable, label (customizable)
DECLARATIONS OF CONFORMITY	CE MARKING, CONFLICT MINERALS, REACH, REACH, ROHS

GGR01E



PRODUCT FAMILY 40PC15

Probe with silicone capsule, PT100 sensor, in silicone cable, diameter 7x30 mm capsule. Suitable for temperature sensing in laboratory equipment and machinery, in refrigeration and air conditioning applications and in heating applications.



TECHNICAL DATA

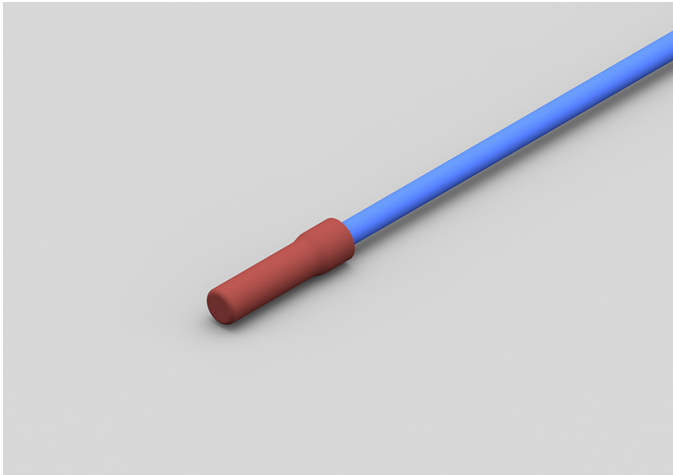
TEMPERATURE RANGE	(-50 +200)°C
MODEL	Silicone capsule
SENSOR	PT100
CAPSULE	Diameter 7x30 mm
CABLE	Silicone
TERMINITIONS	Tin-plated, tips, connectors (other terminations available on request)
RESPONSE TIME	10 s in non-static liquid at 63.2% (depends on configuration)
IDENTIFICATION	Laser on cable, label (customizable)
DECLARATIONS OF CONFORMITY	CE MARKING, CONFLICT MINERALS, REACH, REACH, ROHS

GGR05C



PRODUCT FAMILY 40PC15

Probe with silicone capsule, PT100 sensor, in silicone cable, diameter 6,4x27 mm capsule. Suitable for temperature sensing in laboratory equipment and machinery, in refrigeration and air conditioning applications and in heating applications.



TECHNICAL DATA

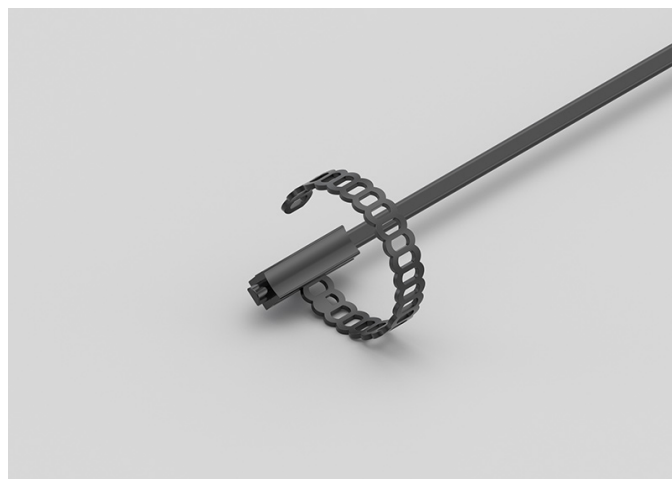
TEMPERATURE RANGE	(-50 +200)°C
MODEL	Silicone capsule
SENSOR	PT100
CAPSULE	Diameter 6,4x27 mm
CABLE	Silicone
TERMINITIONS	Tin-plated, tips, connectors (other terminations available on request)
RESPONSE TIME	10 s in non-static liquid at 63.2% (depends on configuration)
IDENTIFICATION	Laser on cable, label (customizable)
DECLARATIONS OF CONFORMITY	CE MARKING, CONFLICT MINERALS, REACH, REACH, ROHS

**IEI00C**

# IP67 RUBBER BRACELET PROBES

## PRODUCT FAMILY 30GB07

Probe with bracelet, PT1000 sensor, TPE flat cable, 6x6x15 mm capsule. Suitable for temperature sensing in laboratory equipment and machinery, in refrigeration and air conditioning applications, in air quality control applications and in heating applications.



## TECHNICAL DATA

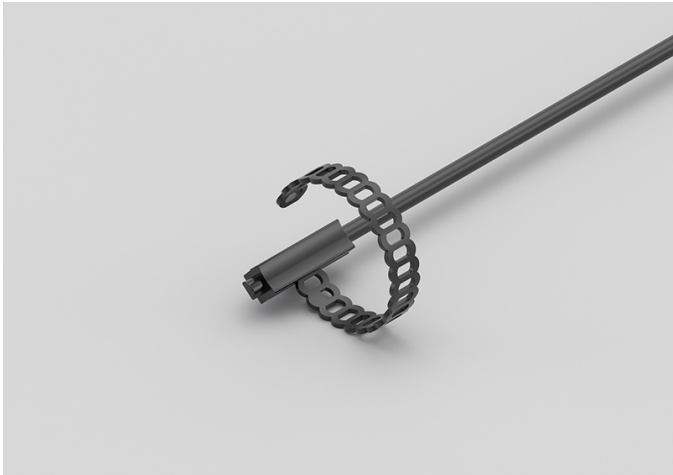
TEMPERATURE RANGE	(-50 +120)°C
MODEL	Bracelet
SENSOR	PT1000
CAPSULE	6x6x15 mm
CABLE	TPE flat
TERMINITIONS	Tin-plated, tips, connectors (other terminations available on request)
RESPONSE TIME	10 s in non-static liquid at 63.2% (depends on configuration)
IDENTIFICATION	Laser on cable, label (customizable)
DECLARATIONS OF CONFORMITY	CE MARKING, CONFLICT MINERALS, REACH, REACH, ROHS

NDI00C

# IP68 RUBBER BRACELET PROBES

PRODUCT FAMILY 30GB05

Probe with bracelet, NTC sensor, TPE round cable, 6x6x15 mm capsule. Suitable for temperature sensing in refrigeration and air conditioning applications, in heating applications and in the field of renewable energy.



## TECHNICAL DATA

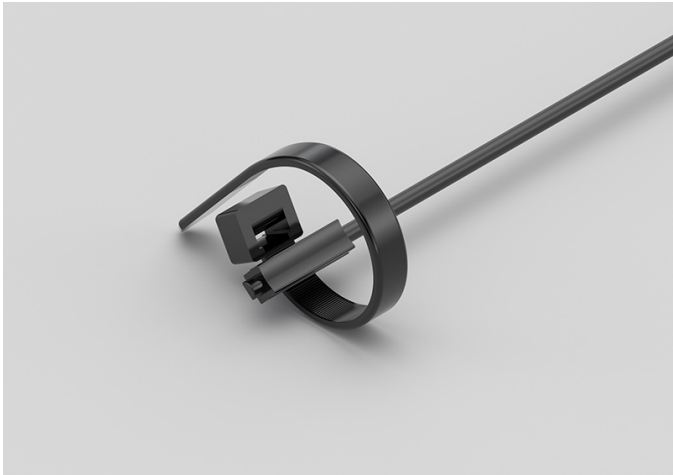
TEMPERATURE RANGE	(-50 +110)°C
MODEL	Bracelet
SENSOR	NTC
CAPSULE	6x6x15 mm
CABLE	TPE round
TERMINITIONS	Tin-plated, tips, connectors (other terminations available on request)
RESPONSE TIME	10 s in non-static liquid at 63.2% (depends on configuration)
IDENTIFICATION	Laser on cable, label (customizable)
DECLARATIONS OF CONFORMITY	CE MARKING, CONFLICT MINERALS, REACH, REACH, ROHS

NDI06C

IP68 RUBBER BRACELET  
PROBE WITH METAL  
CLAMP

PRODUCT FAMILY 30GB06

Probe with bracelet, NTC sensor, TPE round cable, 6x6x15 mm capsule. Suitable for temperature sensing in refrigeration and air conditioning applications, in heating applications and in the field of renewable energy.



TECHNICAL DATA

TEMPERATURE RANGE	(-50 +110)°C
MODEL	Bracelet
SENSOR	NTC
CAPSULE	6x6x15 mm
CABLE	TPE round
TERMINITIONS	Tin-plated, tips, connectors (other terminations available on request)
RESPONSE TIME	10 s in non-static liquid at 63.2% (depends on configuration)
IDENTIFICATION	Laser on cable, label (customizable)
DECLARATIONS OF CONFORMITY	CE MARKING, CONFLICT MINERALS, REACH, REACH, ROHS

**NDM01C**

# PROBES WITH WELDED THREADED CONNECTION

**PRODUCT FAMILY 15CR05**

Probe with connector, NTC sensor, TPE round cable, diameter 4x40 mm capsule. Suitable for temperature sensing in refrigeration and air conditioning applications, in heating applications and in the field of renewable energy.



## TECHNICAL DATA

TEMPERATURE RANGE	(-50 +110)°C
MODEL	With connector
SENSOR	NTC
CAPSULE	Diameter 4x40 mm
CABLE	TPE round
TERMINITIONS	Tin-plated, tips, connectors (other terminations available on request)
RESPONSE TIME	10 s in non-static liquid at 63.2% (depends on configuration)
IDENTIFICATION	Laser on cable, label (customizable)
DECLARATIONS OF CONFORMITY	CE MARKING, CONFLICT MINERALS, REACH, REACH, ROHS

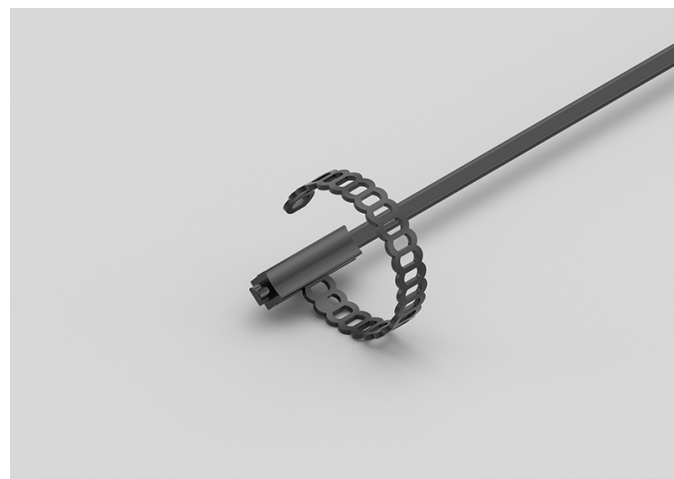


**NEI02C**

# IP67 RUBBER BRACELET PROBES

## PRODUCT FAMILY 30GB07

Probe with bracelet, NTC sensor, TPE flat cable, 6x6x15 mm capsule. Suitable for temperature sensing in laboratory equipment and machinery, in refrigeration and air conditioning applications, in air quality control applications and in heating applications.



## TECHNICAL DATA

TEMPERATURE RANGE	(-50 +120)°C
MODEL	Bracelet
SENSOR	NTC
CAPSULE	6x6x15 mm
CABLE	TPE flat
TERMINITIONS	Tin-plated, tips, connectors (other terminations available on request)
RESPONSE TIME	10 s in non-static liquid at 63.2% (depends on configuration)
IDENTIFICATION	Laser on cable, label (customizable)
DECLARATIONS OF CONFORMITY	CE MARKING, CONFLICT MINERALS, REACH, REACH, ROHS

NPC18C

PROBES WITH PLASTIC CAPSULE

PRODUCT FAMILY 40PC05

Probe with double-insulation capsule, NTC sensor, in PVC cable, diameter 6x24 mm capsule. Suitable for temperature sensing in laboratory equipment and machinery.



TECHNICAL DATA

TEMPERATURE RANGE	(-30 +80)°C
MODEL	Double-insulated capsule
SENSOR	NTC
CAPSULE	Diameter 6x24 mm
CABLE	PVC
TERMINITIONS	Tin-plated, tips, connectors (other terminations available on request)
RESPONSE TIME	10 s in non-static liquid at 63.2% (depends on configuration)
IDENTIFICATION	Laser on cable, label (customizable)
DECLARATIONS OF CONFORMITY	CE MARKING, CONFLICT MINERALS, REACH, REACH, ROHS

NPD00C



PRODUCT FAMILY 40PC10

Probe with double-insulation capsule, NTC sensor, in PVC cable, diameter 7x26 mm capsule. Suitable for temperature sensing in laboratory equipment and machinery.



TECHNICAL DATA

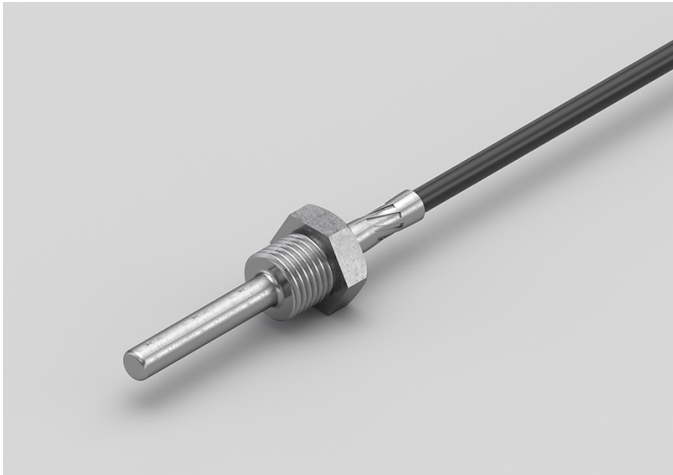
TEMPERATURE RANGE	(-30 +80)°C
MODEL	Double-insulated capsule
SENSOR	NTC
CAPSULE	Diameter 7x26 mm
CABLE	PVC
TERMINITIONS	Tin-plated, tips, connectors (other terminations available on request)
RESPONSE TIME	10 s in non-static liquid at 63.2% (depends on configuration)
IDENTIFICATION	Laser on cable, label (customizable)
DECLARATIONS OF CONFORMITY	CE MARKING, CONFLICT MINERALS, REACH, REACH, ROHS

NPM00C

PROBES WITH WELDED  
THREADED CONNECTION

PRODUCT FAMILY 15CR05

Probe with connector, NTC sensor, in PVC cable, diameter 6x60 mm capsule. Suitable for temperature sensing in refrigeration and air conditioning applications and in the food field.



TECHNICAL DATA

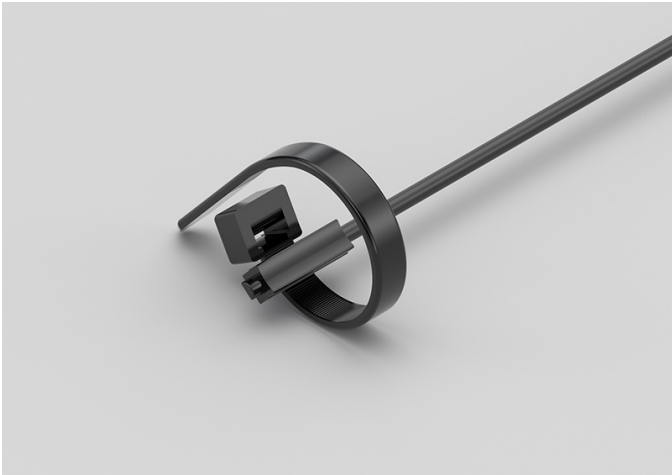
TEMPERATURE RANGE	(-30 +80)°C
MODEL	With connector
SENSOR	NTC
CAPSULE	Diameter 6x60 mm
CABLE	PVC
TERMINITIONS	Tin-plated, tips, connectors (other terminations available on request)
RESPONSE TIME	10 s in non-static liquid at 63.2% (depends on configuration)
IDENTIFICATION	Laser on cable, label (customizable)
DECLARATIONS OF CONFORMITY	CE MARKING, CONFLICT MINERALS, REACH, REACH, ROHS

ADI04C

IP68 RUBBER BRACELET  
PROBE WITH METAL  
CLAMP

PRODUCT FAMILY 30GB06

Probe with bracelet, PTC sensor, TPE round cable, 6x6x15 mm capsule. Suitable for temperature sensing in laboratory equipment and machinery, in heating applications, in the field of renewable energy and in the food field.



TECHNICAL DATA

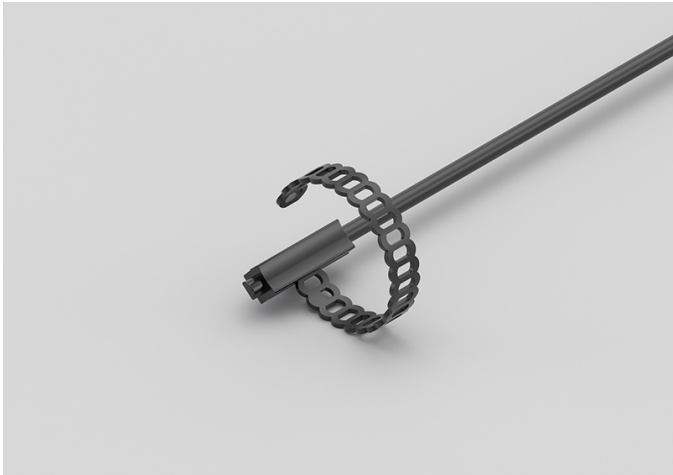
TEMPERATURE RANGE	(-50 +110)°C
MODEL	Bracelet
SENSOR	PTC
CAPSULE	6x6x15 mm
CABLE	TPE round
TERMINITIONS	Tin-plated, tips, connectors (other terminations available on request)
RESPONSE TIME	10 s in non-static liquid at 63.2% (depends on configuration)
IDENTIFICATION	Laser on cable, label (customizable)
DECLARATIONS OF CONFORMITY	CE MARKING, CONFLICT MINERALS, REACH, REACH, ROHS

ADI05C

IP68 RUBBER BRACELET PROBES

PRODUCT FAMILY 30GB05

Probe with bracelet, PTC sensor, TPE round cable, 6x6x15 mm capsule. Suitable for temperature sensing in laboratory equipment and machinery, in heating applications, in the field of renewable energy and in the food field.



TECHNICAL DATA

TEMPERATURE RANGE	(-50 +110)°C
MODEL	Bracelet
SENSOR	PTC
CAPSULE	6x6x15 mm
CABLE	TPE round
TERMINITIONS	Tin-plated, tips, connectors (other terminations available on request)
RESPONSE TIME	10 s in non-static liquid at 63.2% (depends on configuration)
IDENTIFICATION	Laser on cable, label (customizable)
DECLARATIONS OF CONFORMITY	CE MARKING, CONFLICT MINERALS, REACH, REACH, ROHS

**ADM00C**

# PROBES WITH SLIDING THREADED CONNECTION

**PRODUCT FAMILY 15CR10**

Probe with connector, PTC sensor, TPE round cable, diameter 4x40 mm capsule. Suitable for temperature sensing in heating applications, in the field of renewable energy and in the food field.



## TECHNICAL DATA

TEMPERATURE RANGE	(-50 +110)°C
MODEL	With connector
SENSOR	PTC
CAPSULE	Diameter 4x40 mm
CABLE	TPE round
TERMINITIONS	Tin-plated, tips, connectors (other terminations available on request)
RESPONSE TIME	10 s in non-static liquid at 63.2% (depends on configuration)
IDENTIFICATION	Laser on cable, label (customizable)
DECLARATIONS OF CONFORMITY	CE MARKING, CONFLICT MINERALS, REACH, REACH, ROHS

**ADM01C**

# PROBES WITH WELDED THREADED CONNECTION

**PRODUCT FAMILY 15CR05**

Probe with connector, PTC sensor, TPE round cable, diameter 4x40 mm capsule. Suitable for temperature sensing in laboratory equipment and machinery, in refrigeration and air conditioning applications, in heating applications, in the field of renewable energy, in the food field and in the industrial field.



## TECHNICAL DATA

TEMPERATURE RANGE	(-50 +110)°C
MODEL	With connector
SENSOR	PTC
CAPSULE	Diameter 4x40 mm
CABLE	TPE round
TERMINITIONS	Tin-plated, tips, connectors (other terminations available on request)
RESPONSE TIME	10 s in non-static liquid at 63.2% (depends on configuration)
IDENTIFICATION	Laser on cable, label (customizable)
DECLARATIONS OF CONFORMITY	CE MARKING, CONFLICT MINERALS, REACH, REACH, ROHS



**ADM02C**

# PROBES WITH THREADED CONNECTION

**PRODUCT FAMILY 15CR15**

Probe with connector, PTC sensor, TPE round cable, M4 L. 34,85 mm capsule. Suitable for temperature sensing in laboratory equipment and machinery, in refrigeration and air conditioning applications, in heating applications, in the field of renewable energy, in the food field and in the industrial field.



## TECHNICAL DATA

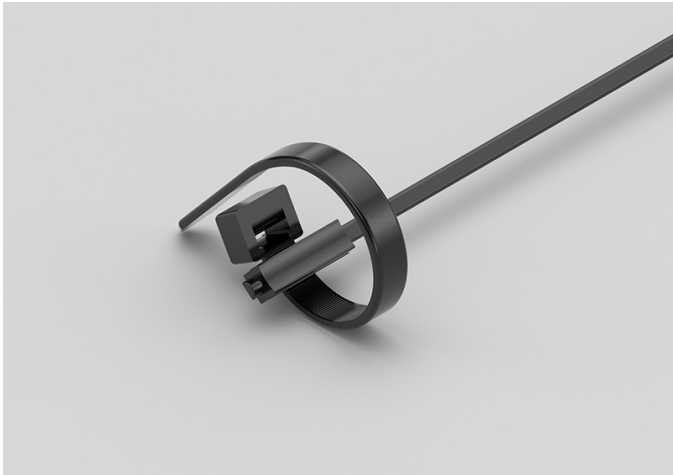
TEMPERATURE RANGE	(-50 +110)°C
MODEL	With connector
SENSOR	PTC
CAPSULE	M4 L. 34,85 mm
CABLE	TPE round
TERMINITIONS	Tin-plated, tips, connectors (other terminations available on request)
RESPONSE TIME	10 s in non-static liquid at 63.2% (depends on configuration)
IDENTIFICATION	Laser on cable, label (customizable)
DECLARATIONS OF CONFORMITY	CE MARKING, CONFLICT MINERALS, REACH, REACH, ROHS

AEI03C

# IP67 RUBBER BRACELET PROBES WITH METAL CLAMP

PRODUCT FAMILY 30GB08

Probe with bracelet, PTC sensor, TPE flat cable, 6x6x15 mm capsule. Suitable for temperature sensing in laboratory equipment and machinery, in heating applications and in the food field.



## TECHNICAL DATA

TEMPERATURE RANGE	(-50 +120)°C
MODEL	Bracelet
SENSOR	PTC
CAPSULE	6x6x15 mm
CABLE	TPE flat
TERMINITIONS	Tin-plated, tips, connectors (other terminations available on request)
RESPONSE TIME	10 s in non-static liquid at 63.2% (depends on configuration)
IDENTIFICATION	Laser on cable, label (customizable)
DECLARATIONS OF CONFORMITY	CE MARKING, CONFLICT MINERALS, REACH, REACH, ROHS

## AGG04C

# PROBES WITH METAL CAPSULE BENT AT 90 DEGREES

## PRODUCT FAMILY 15CA30

Probe with steel capsule, PTC sensor, in silicone cable, diameter 6X100 mm capsule. Suitable for temperature sensing in laboratory equipment and machinery, in heating applications and in the food field.



## TECHNICAL DATA

TEMPERATURE RANGE	(-50 +150)°C
MODEL	Steel capsule
SENSOR	PTC
CAPSULE	Diameter 6X100 mm
CABLE	Silicone
TERMINITIONS	Tin-plated, tips, connectors (other terminations available on request)
RESPONSE TIME	10 s in non-static liquid at 63.2% (depends on configuration)
IDENTIFICATION	Laser on cable, label (customizable)
DECLARATIONS OF CONFORMITY	CE MARKING, CONFLICT MINERALS, REACH, REACH, ROHS

## AGM02C

# PROBES WITH THREADED CONNECTION

## PRODUCT FAMILY 15CR15

Probe with connector, PTC sensor, in silicone cable, M6 L. 30,5 mm capsule. Suitable for temperature sensing in laboratory equipment and machinery, in heating applications and in the food field.



## TECHNICAL DATA

TEMPERATURE RANGE	(-50 +150)°C
MODEL	With connector
SENSOR	PTC
CAPSULE	M6 L. 30,5 mm
CABLE	Silicone
TERMINITIONS	Tin-plated, tips, connectors (other terminations available on request)
RESPONSE TIME	10 s in non-static liquid at 63.2% (depends on configuration)
IDENTIFICATION	Laser on cable, label (customizable)
DECLARATIONS OF CONFORMITY	CE MARKING, CONFLICT MINERALS, REACH, REACH, ROHS

## AGM03C

# PROBES WITH WELDED THREADED CONNECTION

## PRODUCT FAMILY 15CR05

Probe with connector, PTC sensor, in silicone cable, diameter 4x40 mm capsule. Suitable for temperature sensing in laboratory equipment and machinery, in refrigeration and air conditioning applications, in air quality control applications, in heating applications, in the field of renewable energy and in the food field.



## TECHNICAL DATA

TEMPERATURE RANGE	(-50 +150)°C
MODEL	With connector
SENSOR	PTC
CAPSULE	Diameter 4x40 mm
CABLE	Silicone
TERMINITIONS	Tin-plated, tips, connectors (other terminations available on request)
RESPONSE TIME	10 s in non-static liquid at 63.2% (depends on configuration)
IDENTIFICATION	Laser on cable, label (customizable)
DECLARATIONS OF CONFORMITY	CE MARKING, CONFLICT MINERALS, REACH, REACH, ROHS

**AGM04C**

# PROBES WITH SLIDING THREADED CONNECTION

**PRODUCT FAMILY 15CR10**

Probe with connector, PTC sensor, in silicone cable, diameter 4x40 mm capsule. Suitable for temperature sensing in laboratory equipment and machinery, in refrigeration and air conditioning applications, in air quality control applications, in heating applications, in the field of renewable energy and in the food field.



## TECHNICAL DATA

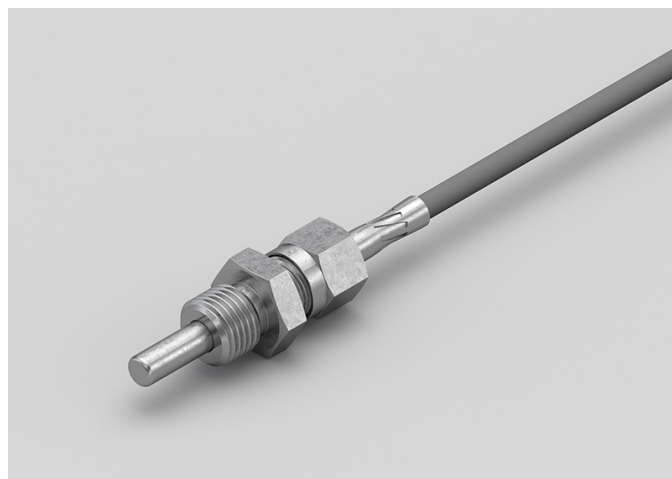
TEMPERATURE RANGE	(-50 +150)°C
MODEL	With connector
SENSOR	PTC
CAPSULE	Diameter 4x40 mm
CABLE	Silicone
TERMINITIONS	Tin-plated, tips, connectors (other terminations available on request)
RESPONSE TIME	10 s in non-static liquid at 63.2% (depends on configuration)
IDENTIFICATION	Laser on cable, label (customizable)
DECLARATIONS OF CONFORMITY	CE MARKING, CONFLICT MINERALS, REACH, REACH, ROHS

## AGM05C

# PROBES WITH SLIDING THREADED CONNECTION

## PRODUCT FAMILY 15CR10

Probe with connector, PTC sensor, in silicone cable, diameter 6x60 mm capsule. Suitable for temperature sensing in laboratory equipment and machinery, in heating applications and in the food field.



## TECHNICAL DATA

TEMPERATURE RANGE	(-50 +150)°C
MODEL	With connector
SENSOR	PTC
CAPSULE	Diameter 6x60 mm
CABLE	Silicone
TERMINITIONS	Tin-plated, tips, connectors (other terminations available on request)
RESPONSE TIME	10 s in non-static liquid at 63.2% (depends on configuration)
IDENTIFICATION	Laser on cable, label (customizable)
DECLARATIONS OF CONFORMITY	CE MARKING, CONFLICT MINERALS, REACH, REACH, ROHS

AGM06C

PROBES WITH THREADED CONNECTION

PRODUCT FAMILY 15CR15

Probe with connector, PTC sensor, in silicone cable, M4 L. 34,85 mm capsule. Suitable for temperature sensing in air quality control applications.



TECHNICAL DATA

TEMPERATURE RANGE	(-50 +150)°C
MODEL	With connector
SENSOR	PTC
CAPSULE	M4 L. 34,85 mm
CABLE	Silicone
TERMINITIONS	Tin-plated, tips, connectors (other terminations available on request)
RESPONSE TIME	10 s in non-static liquid at 63.2% (depends on configuration)
IDENTIFICATION	Laser on cable, label (customizable)
DECLARATIONS OF CONFORMITY	CE MARKING, CONFLICT MINERALS, REACH, REACH, ROHS

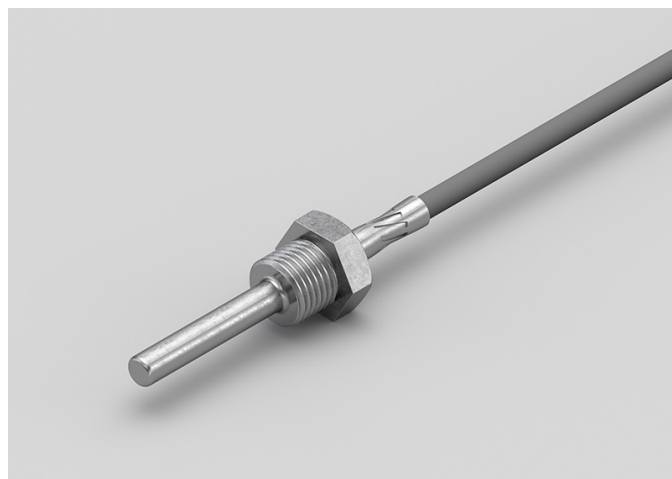


**AGM07C**

# PROBES WITH WELDED THREADED CONNECTION

**PRODUCT FAMILY 15CR05**

Probe with connector, PTC sensor, in silicone cable, diameter 6x60 mm capsule. Suitable for temperature sensing in air quality control applications.



## TECHNICAL DATA

TEMPERATURE RANGE	(-50 +150)°C
MODEL	With connector
SENSOR	PTC
CAPSULE	Diameter 6x60 mm
CABLE	Silicone
TERMINITIONS	Tin-plated, tips, connectors (other terminations available on request)
RESPONSE TIME	10 s in non-static liquid at 63.2% (depends on configuration)
IDENTIFICATION	Laser on cable, label (customizable)
DECLARATIONS OF CONFORMITY	CE MARKING, CONFLICT MINERALS, REACH, REACH, ROHS

APB13C

PROBES WITH PLASTIC CAPSULE

PRODUCT FAMILY 40PC05

Probe with double-insulation capsule, PTC sensor, in PVC cable, diameter 6x24 mm capsule. Suitable for temperature sensing in laboratory equipment and machinery.



TECHNICAL DATA

TEMPERATURE RANGE	(-30 +105)°C
MODEL	Double-insulated capsule
SENSOR	PTC
CAPSULE	Diameter 6x24 mm
CABLE	PVC
TERMINITIONS	Tin-plated, tips, connectors (other terminations available on request)
RESPONSE TIME	10 s in non-static liquid at 63.2% (depends on configuration)
IDENTIFICATION	Laser on cable, label (customizable)
DECLARATIONS OF CONFORMITY	CE MARKING, CONFLICT MINERALS, REACH, REACH, ROHS

APM01C

PROBES WITH WELDED  
THREADED CONNECTION

PRODUCT FAMILY 15CR05

Probe with connector, PTC sensor, in PVC cable, diameter 4x40 mm capsule. Suitable for temperature sensing in refrigeration and air conditioning applications, in air quality control applications and in the food field.



TECHNICAL DATA

TEMPERATURE RANGE	(-30 +80)°C
MODEL	With connector
SENSOR	PTC
CAPSULE	Diameter 4x40 mm
CABLE	PVC
TERMINITIONS	Tin-plated, tips, connectors (other terminations available on request)
RESPONSE TIME	10 s in non-static liquid at 63.2% (depends on configuration)
IDENTIFICATION	Laser on cable, label (customizable)
DECLARATIONS OF CONFORMITY	CE MARKING, CONFLICT MINERALS, REACH, REACH, ROHS

**APM02C**

# PROBES WITH THREADED CONNECTION

**PRODUCT FAMILY 15CR15**

Probe with connector, PTC sensor, in PVC cable, M4 L. 34,85 mm capsule. Suitable for temperature sensing in laboratory equipment and machinery, in refrigeration and air conditioning applications, in air quality control applications and in the food field.



## TECHNICAL DATA

TEMPERATURE RANGE	(-30 +80)°C
MODEL	With connector
SENSOR	PTC
CAPSULE	M4 L. 34,85 mm
CABLE	PVC
TERMINITIONS	Tin-plated, tips, connectors (other terminations available on request)
RESPONSE TIME	10 s in non-static liquid at 63.2% (depends on configuration)
IDENTIFICATION	Laser on cable, label (customizable)
DECLARATIONS OF CONFORMITY	CE MARKING, CONFLICT MINERALS, REACH, REACH, ROHS

**APM03C**

# PROBES WITH SLIDING THREADED CONNECTION

**PRODUCT FAMILY 15CR10**

Probe with connector, PTC sensor, in PVC cable, diameter 6x60 mm capsule. Suitable for temperature sensing in laboratory equipment and machinery, in refrigeration and air conditioning applications, in air quality control applications and in the food field.



## TECHNICAL DATA

TEMPERATURE RANGE	(-30 +105)°C
MODEL	With connector
SENSOR	PTC
CAPSULE	Diameter 6x60 mm
CABLE	PVC
TERMINITIONS	Tin-plated, tips, connectors (other terminations available on request)
RESPONSE TIME	10 s in non-static liquid at 63.2% (depends on configuration)
IDENTIFICATION	Laser on cable, label (customizable)
DECLARATIONS OF CONFORMITY	CE MARKING, CONFLICT MINERALS, REACH, REACH, ROHS

APM04C

PROBES WITH SLIDING  
THREADED CONNECTION

PRODUCT FAMILY 15CR10

Probe with connector, PTC sensor, in PVC cable, diameter 4x40 mm capsule. Suitable for temperature sensing in heating applications and in the food field.



TECHNICAL DATA

TEMPERATURE RANGE	(-30 +80)°C
MODEL	With connector
SENSOR	PTC
CAPSULE	Diameter 4x40 mm
CABLE	PVC
TERMINITIONS	Tin-plated, tips, connectors (other terminations available on request)
RESPONSE TIME	10 s in non-static liquid at 63.2% (depends on configuration)
IDENTIFICATION	Laser on cable, label (customizable)
DECLARATIONS OF CONFORMITY	CE MARKING, CONFLICT MINERALS, REACH, REACH, ROHS

## APM05C

# PROBES WITH THREADED CONNECTION

## PRODUCT FAMILY 15CR15

Probe with connector, PTC sensor, in PVC cable, M6 L. 30,5 mm capsule. Suitable for temperature sensing in heating applications and in the food field.



## TECHNICAL DATA

TEMPERATURE RANGE	(-30 +105)°C
MODEL	With connector
SENSOR	PTC
CAPSULE	M6 L. 30,5 mm
CABLE	PVC
TERMINITIONS	Tin-plated, tips, connectors (other terminations available on request)
RESPONSE TIME	10 s in non-static liquid at 63.2% (depends on configuration)
IDENTIFICATION	Laser on cable, label (customizable)
DECLARATIONS OF CONFORMITY	CE MARKING, CONFLICT MINERALS, REACH, REACH, ROHS

APM06C

PROBES WITH WELDED  
THREADED CONNECTION

PRODUCT FAMILY 15CR05

Probe with connector, PTC sensor, in PVC cable, diameter 6x60 mm capsule. Suitable for temperature sensing in laboratory equipment and machinery, in heating applications and in the food field.



TECHNICAL DATA

TEMPERATURE RANGE	(-30 +105)°C
MODEL	With connector
SENSOR	PTC
CAPSULE	Diameter 6x60 mm
CABLE	PVC
TERMINITIONS	Tin-plated, tips, connectors (other terminations available on request)
RESPONSE TIME	10 s in non-static liquid at 63.2% (depends on configuration)
IDENTIFICATION	Laser on cable, label (customizable)
DECLARATIONS OF CONFORMITY	CE MARKING, CONFLICT MINERALS, REACH, REACH, ROHS

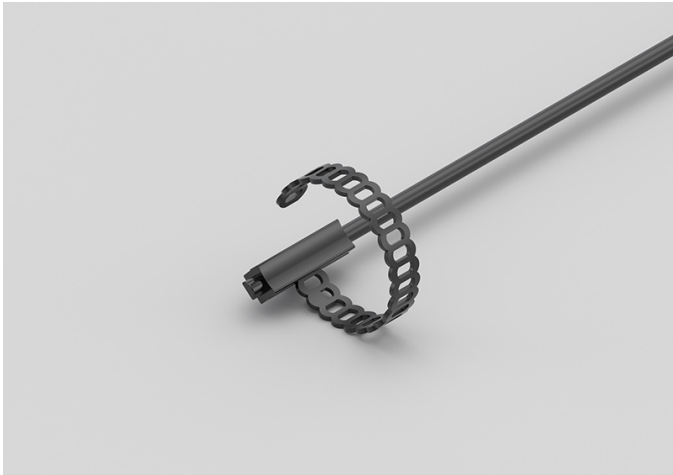


GDI03C

# IP68 RUBBER BRACELET PROBES

PRODUCT FAMILY 30GB05

Probe with bracelet, PT100 sensor, TPE round cable, 6x6x15 mm capsule. Suitable for temperature sensing in laboratory equipment and machinery, in heating applications and in the food field.



## TECHNICAL DATA

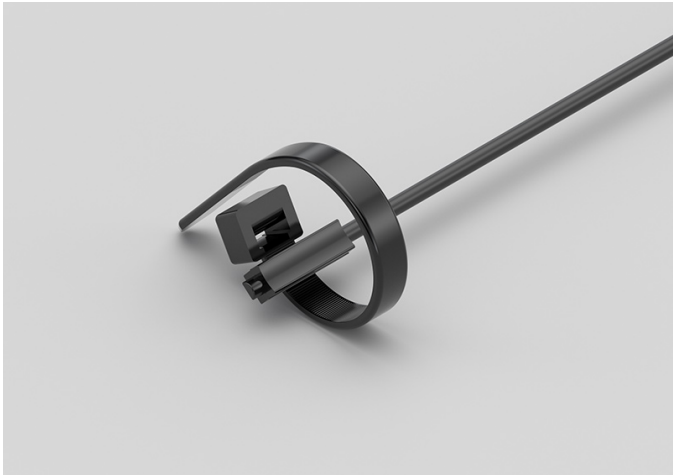
TEMPERATURE RANGE	(-50 +110)°C
MODEL	Bracelet
SENSOR	PT100
CAPSULE	6x6x15 mm
CABLE	TPE round
TERMINITIONS	Tin-plated, tips, connectors (other terminations available on request)
RESPONSE TIME	10 s in non-static liquid at 63.2% (depends on configuration)
IDENTIFICATION	Laser on cable, label (customizable)
DECLARATIONS OF CONFORMITY	CE MARKING, CONFLICT MINERALS, REACH, REACH, ROHS

GDI05C

IP68 RUBBER BRACELET  
PROBE WITH METAL  
CLAMP

PRODUCT FAMILY 30GB06

Probe with bracelet, PT100 sensor, TPE round cable, 6x6x15 mm capsule. Suitable for temperature sensing in refrigeration and air conditioning applications, in air quality control applications, in the field of renewable energy and in the food field.



TECHNICAL DATA

TEMPERATURE RANGE	(-50 +110)°C
MODEL	Bracelet
SENSOR	PT100
CAPSULE	6x6x15 mm
CABLE	TPE round
TERMINITIONS	Tin-plated, tips, connectors (other terminations available on request)
RESPONSE TIME	10 s in non-static liquid at 63.2% (depends on configuration)
IDENTIFICATION	Laser on cable, label (customizable)
DECLARATIONS OF CONFORMITY	CE MARKING, CONFLICT MINERALS, REACH, REACH, ROHS

GDM00C

PROBES WITH WELDED  
THREADED CONNECTION

PRODUCT FAMILY 15CR05

Probe with connector, PT100 sensor, TPE round cable, diameter 4x40 mm capsule. Suitable for temperature sensing in refrigeration and air conditioning applications, in air quality control applications, in the field of renewable energy and in the food field.



TECHNICAL DATA

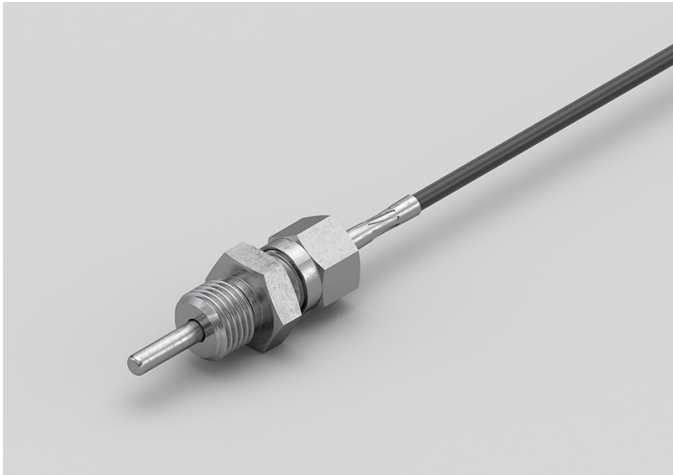
TEMPERATURE RANGE	(-50 +110)°C
MODEL	With connector
SENSOR	PT100
CAPSULE	Diameter 4x40 mm
CABLE	TPE round
TERMINITIONS	Tin-plated, tips, connectors (other terminations available on request)
RESPONSE TIME	10 s in non-static liquid at 63.2% (depends on configuration)
IDENTIFICATION	Laser on cable, label (customizable)
DECLARATIONS OF CONFORMITY	CE MARKING, CONFLICT MINERALS, REACH, REACH, ROHS

GDM01C

PROBES WITH SLIDING  
THREADED CONNECTION

PRODUCT FAMILY 15CR10

Probe with connector, PT100 sensor, TPE round cable, diameter 4x40 mm capsule. Suitable for temperature sensing in refrigeration and air conditioning applications, in air quality control applications, in the field of renewable energy and in the food field.



TECHNICAL DATA

TEMPERATURE RANGE	(-50 +110)°C
MODEL	With connector
SENSOR	PT100
CAPSULE	Diameter 4x40 mm
CABLE	TPE round
TERMINITIONS	Tin-plated, tips, connectors (other terminations available on request)
RESPONSE TIME	10 s in non-static liquid at 63.2% (depends on configuration)
IDENTIFICATION	Laser on cable, label (customizable)
DECLARATIONS OF CONFORMITY	CE MARKING, CONFLICT MINERALS, REACH, REACH, ROHS

GDM02C

PROBES WITH THREADED CONNECTION

PRODUCT FAMILY 15CR15

Probe with connector, PT100 sensor, TPE round cable, M4 L. 34,85 mm capsule. Suitable for temperature sensing in refrigeration and air conditioning applications, in air quality control applications, in the field of renewable energy and in the food field.



TECHNICAL DATA

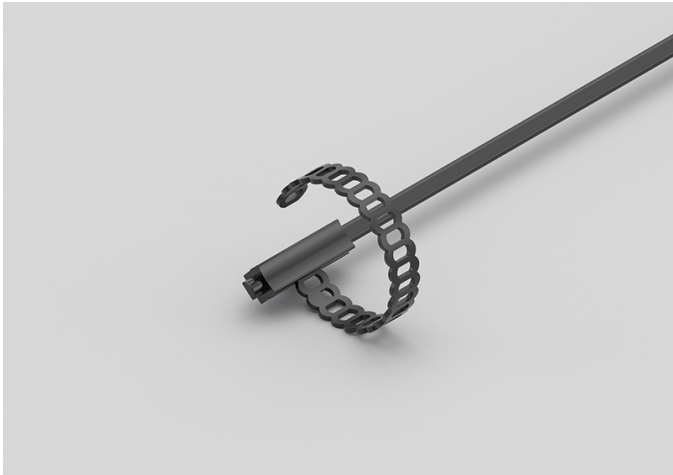
TEMPERATURE RANGE	(-50 +110)°C
MODEL	With connector
SENSOR	PT100
CAPSULE	M4 L. 34,85 mm
CABLE	TPE round
TERMINITIONS	Tin-plated, tips, connectors (other terminations available on request)
RESPONSE TIME	10 s in non-static liquid at 63.2% (depends on configuration)
IDENTIFICATION	Laser on cable, label (customizable)
DECLARATIONS OF CONFORMITY	CE MARKING, CONFLICT MINERALS, REACH, REACH, ROHS

GEI01C

# IP67 RUBBER BRACELET PROBES

PRODUCT FAMILY 30GB07

Probe with bracelet, PT100 sensor, TPE flat cable, 6x6x15 mm capsule. Suitable for temperature sensing in heating applications, in the field of renewable energy and in the food field.



## TECHNICAL DATA

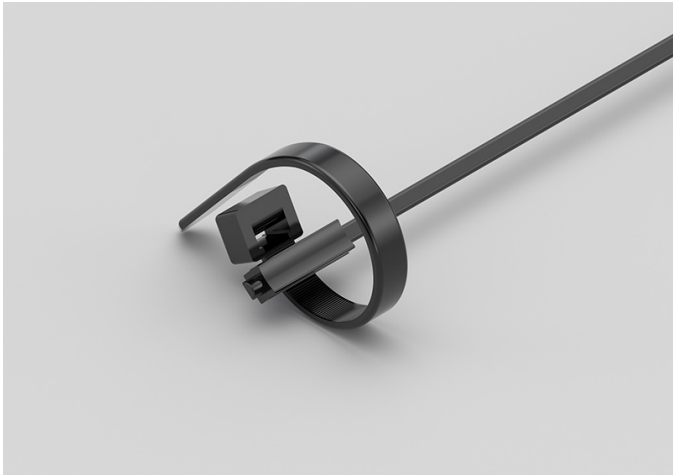
TEMPERATURE RANGE	(-50 +120)°C
MODEL	Bracelet
SENSOR	PT100
CAPSULE	6x6x15 mm
CABLE	TPE flat
TERMINITIONS	Tin-plated, tips, connectors (other terminations available on request)
RESPONSE TIME	10 s in non-static liquid at 63.2% (depends on configuration)
IDENTIFICATION	Laser on cable, label (customizable)
DECLARATIONS OF CONFORMITY	CE MARKING, CONFLICT MINERALS, REACH, REACH, ROHS

GEI03C

# IP67 RUBBER BRACELET PROBES WITH METAL CLAMP

PRODUCT FAMILY 30GB08

Probe with bracelet, PT100 sensor, TPE flat cable, 6x6x15 mm capsule. Suitable for temperature sensing in refrigeration and air conditioning applications, in air quality control applications and in the food field.



## TECHNICAL DATA

TEMPERATURE RANGE	(-50 +120)°C
MODEL	Bracelet
SENSOR	PT100
CAPSULE	6x6x15 mm
CABLE	TPE flat
TERMINITIONS	Tin-plated, tips, connectors (other terminations available on request)
RESPONSE TIME	10 s in non-static liquid at 63.2% (depends on configuration)
IDENTIFICATION	Laser on cable, label (customizable)
DECLARATIONS OF CONFORMITY	CE MARKING, CONFLICT MINERALS, REACH, REACH, ROHS

GGG04C

PROBES WITH METAL  
CAPSULE BENT AT 90  
DEGREES

PRODUCT FAMILY 15CA30

Probe with steel capsule, PT100 sensor, in silicone cable, diameter 6X100 mm capsule. Suitable for temperature sensing in heating applications and in the food field.



TECHNICAL DATA

TEMPERATURE RANGE	(-50 +200)°C
MODEL	Steel capsule
SENSOR	PT100
CAPSULE	Diameter 6X100 mm
CABLE	Silicone
TERMINITIONS	Tin-plated, tips, connectors (other terminations available on request)
RESPONSE TIME	10 s in non-static liquid at 63.2% (depends on configuration)
IDENTIFICATION	Laser on cable, label (customizable)
DECLARATIONS OF CONFORMITY	CE MARKING, CONFLICT MINERALS, MOCA, REACH, REACH, ROHS



**GGM04C**

# PROBES WITH THREADED CONNECTION

**PRODUCT FAMILY 15CR15**

Probe with connector, PT100 sensor, in silicone cable, M6 L. 30,5 mm capsule. Suitable for temperature sensing in refrigeration and air conditioning applications, in heating applications, in the food field and in the industrial field.



## TECHNICAL DATA

TEMPERATURE RANGE	(-50 +200)°C
MODEL	With connector
SENSOR	PT100
CAPSULE	M6 L. 30,5 mm
CABLE	Silicone
TERMINITIONS	Tin-plated, tips, connectors (other terminations available on request)
RESPONSE TIME	10 s in non-static liquid at 63.2% (depends on configuration)
IDENTIFICATION	Laser on cable, label (customizable)
DECLARATIONS OF CONFORMITY	CE MARKING, CONFLICT MINERALS, REACH, REACH, ROHS

**GGM05C**

# PROBES WITH THREADED CONNECTION

**PRODUCT FAMILY 15CR15**

Probe with connector, PT100 sensor, in silicone cable, M4 L. 34,85 mm capsule. Suitable for temperature sensing in refrigeration and air conditioning applications, in heating applications, in the food field and in the industrial field.



## TECHNICAL DATA

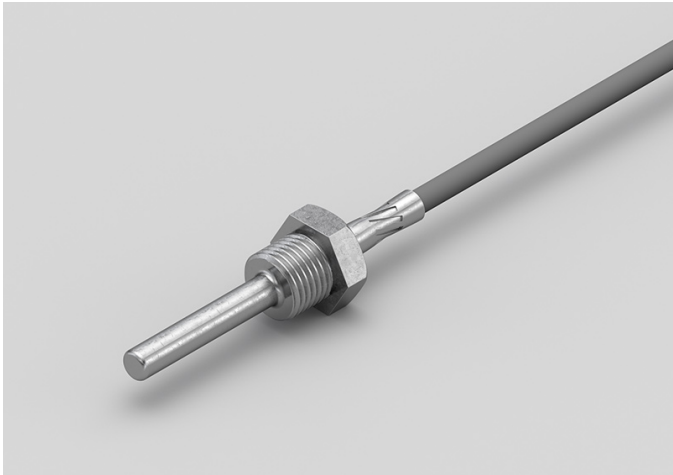
TEMPERATURE RANGE	(-50 +200)°C
MODEL	With connector
SENSOR	PT100
CAPSULE	M4 L. 34,85 mm
CABLE	Silicone
TERMINITIONS	Tin-plated, tips, connectors (other terminations available on request)
RESPONSE TIME	10 s in non-static liquid at 63.2% (depends on configuration)
IDENTIFICATION	Laser on cable, label (customizable)
DECLARATIONS OF CONFORMITY	CE MARKING, CONFLICT MINERALS, REACH, REACH, ROHS

GGM06C

PROBES WITH WELDED  
THREADED CONNECTION

PRODUCT FAMILY 15CR05

Probe with connector, PT100 sensor, in silicone cable, diameter 6x60 mm capsule. Suitable for temperature sensing in heating applications and in the food field.



TECHNICAL DATA

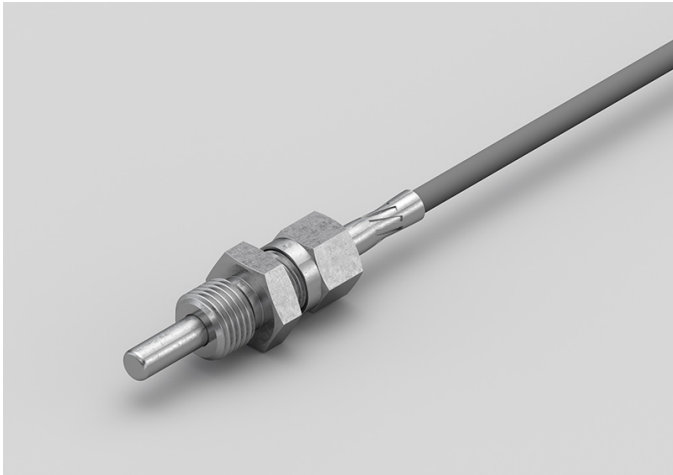
TEMPERATURE RANGE	(-50 +200)°C
MODEL	With connector
SENSOR	PT100
CAPSULE	Diameter 6x60 mm
CABLE	Silicone
TERMINITIONS	Tin-plated, tips, connectors (other terminations available on request)
RESPONSE TIME	10 s in non-static liquid at 63.2% (depends on configuration)
IDENTIFICATION	Laser on cable, label (customizable)
DECLARATIONS OF CONFORMITY	CE MARKING, CONFLICT MINERALS, REACH, REACH, ROHS

GGM07C

PROBES WITH SLIDING  
THREADED CONNECTION

PRODUCT FAMILY 15CR10

Probe with connector, PT100 sensor, in silicone cable, diameter 6x60 mm capsule. Suitable for temperature sensing in heating applications and in the food field.



TECHNICAL DATA

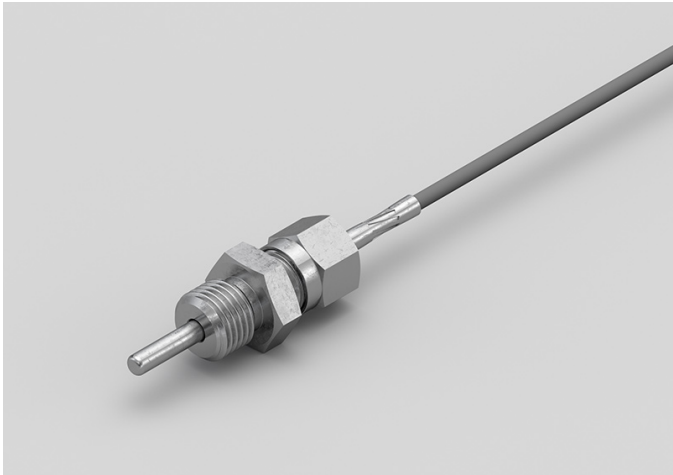
TEMPERATURE RANGE	(-50 +200)°C
MODEL	With connector
SENSOR	PT100
CAPSULE	Diameter 6x60 mm
CABLE	Silicone
TERMINITIONS	Tin-plated, tips, connectors (other terminations available on request)
RESPONSE TIME	10 s in non-static liquid at 63.2% (depends on configuration)
IDENTIFICATION	Laser on cable, label (customizable)
DECLARATIONS OF CONFORMITY	CE MARKING, CONFLICT MINERALS, REACH, REACH, ROHS

GGM08C

PROBES WITH SLIDING  
THREADED CONNECTION

PRODUCT FAMILY 15CR10

Probe with connector, PT100 sensor, in silicone cable, diameter 4x40 mm capsule. Suitable for temperature sensing in heating applications and in the food field.



TECHNICAL DATA

TEMPERATURE RANGE	(-50 +200)°C
MODEL	With connector
SENSOR	PT100
CAPSULE	Diameter 4x40 mm
CABLE	Silicone
TERMINITIONS	Tin-plated, tips, connectors (other terminations available on request)
RESPONSE TIME	10 s in non-static liquid at 63.2% (depends on configuration)
IDENTIFICATION	Laser on cable, label (customizable)
DECLARATIONS OF CONFORMITY	CE MARKING, CONFLICT MINERALS, REACH, REACH, ROHS

GGM09C

# PROBES WITH WELDED THREADED CONNECTION

PRODUCT FAMILY 15CR05

Probe with connector, PT100 sensor, in silicone cable, diameter 4x40 mm capsule. Suitable for temperature sensing in laboratory equipment and machinery, in refrigeration and air conditioning applications, in air quality control applications, in heating applications, in the field of renewable energy, in the food field and in the industrial field.



## TECHNICAL DATA

TEMPERATURE RANGE	(-50 +200)°C
MODEL	With connector
SENSOR	PT100
CAPSULE	Diameter 4x40 mm
CABLE	Silicone
TERMINITIONS	Tin-plated, tips, connectors (other terminations available on request)
RESPONSE TIME	10 s in non-static liquid at 63.2% (depends on configuration)
IDENTIFICATION	Laser on cable, label (customizable)
DECLARATIONS OF CONFORMITY	CE MARKING, CONFLICT MINERALS, REACH, REACH, ROHS

GPM00C

PROBES WITH THREADED CONNECTION

PRODUCT FAMILY 15CR15

Probe with connector, PT100 sensor, in PVC cable, M6 L. 30,5 mm capsule. Suitable for temperature sensing in laboratory equipment and machinery.



TECHNICAL DATA

TEMPERATURE RANGE	(-30 +105)°C
MODEL	With connector
SENSOR	PT100
CAPSULE	M6 L. 30,5 mm
CABLE	PVC
TERMINITIONS	Tin-plated, tips, connectors (other terminations available on request)
RESPONSE TIME	10 s in non-static liquid at 63.2% (depends on configuration)
IDENTIFICATION	Laser on cable, label (customizable)
DECLARATIONS OF CONFORMITY	CE MARKING, CONFLICT MINERALS, REACH, REACH, ROHS

GPM01C

PROBES WITH THREADED CONNECTION

PRODUCT FAMILY 15CR15

Probe with connector, PT100 sensor, in PVC cable, M4 L. 34,85 mm capsule. Suitable for temperature sensing in laboratory equipment and machinery.



TECHNICAL DATA

TEMPERATURE RANGE	(-30 +80)°C
MODEL	With connector
SENSOR	PT100
CAPSULE	M4 L. 34,85 mm
CABLE	PVC
TERMINITIONS	Tin-plated, tips, connectors (other terminations available on request)
RESPONSE TIME	10 s in non-static liquid at 63.2% (depends on configuration)
IDENTIFICATION	Laser on cable, label (customizable)
DECLARATIONS OF CONFORMITY	CE MARKING, CONFLICT MINERALS, REACH, REACH, ROHS

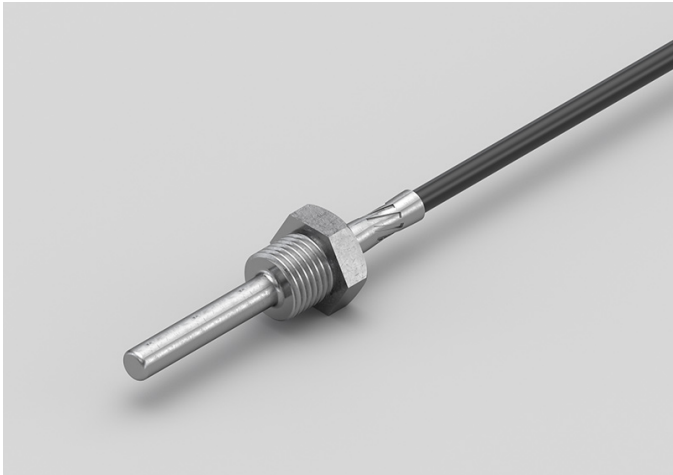


GPM02C

PROBES WITH WELDED  
THREADED CONNECTION

PRODUCT FAMILY 15CR05

Probe with connector, PT100 sensor, in PVC cable, diameter 6x60 mm capsule. Suitable for temperature sensing in refrigeration and air conditioning applications and in the industrial field.



TECHNICAL DATA

TEMPERATURE RANGE	(-30 +105)°C
MODEL	With connector
SENSOR	PT100
CAPSULE	Diameter 6x60 mm
CABLE	PVC
TERMINITIONS	Tin-plated, tips, connectors (other terminations available on request)
RESPONSE TIME	10 s in non-static liquid at 63.2% (depends on configuration)
IDENTIFICATION	Laser on cable, label (customizable)
DECLARATIONS OF CONFORMITY	CE MARKING, CONFLICT MINERALS, REACH, REACH, ROHS

GPM03C

PROBES WITH SLIDING  
THREADED CONNECTION

PRODUCT FAMILY 15CR10

Probe with connector, PT100 sensor, in PVC cable, diameter 6x60 mm capsule. Suitable for temperature sensing in refrigeration and air conditioning applications and in the industrial field.



TECHNICAL DATA

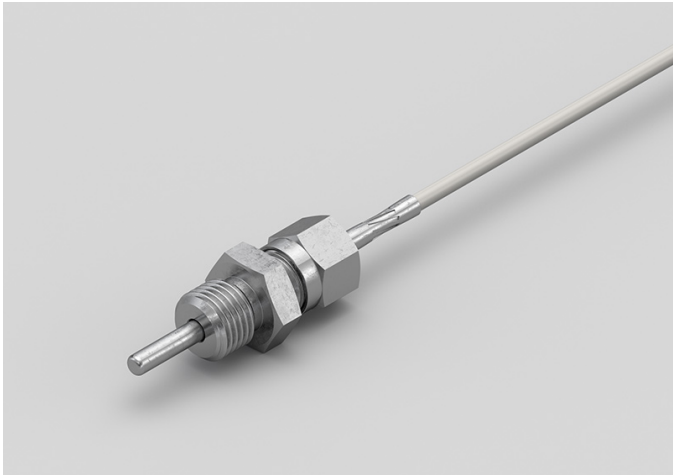
TEMPERATURE RANGE	(-30 +105)°C
MODEL	With connector
SENSOR	PT100
CAPSULE	Diameter 6x60 mm
CABLE	PVC
TERMINITIONS	Tin-plated, tips, connectors (other terminations available on request)
RESPONSE TIME	10 s in non-static liquid at 63.2% (depends on configuration)
IDENTIFICATION	Laser on cable, label (customizable)
DECLARATIONS OF CONFORMITY	CE MARKING, CONFLICT MINERALS, REACH, REACH, ROHS

GPM04C

PROBES WITH SLIDING  
THREADED CONNECTION

PRODUCT FAMILY 15CR10

Probe with connector, PT100 sensor, in PVC cable, diameter 4x40 mm capsule. Suitable for temperature sensing in laboratory equipment and machinery, in refrigeration and air conditioning applications, in air quality control applications, in heating applications, in the field of renewable energy and in the food field.



TECHNICAL DATA

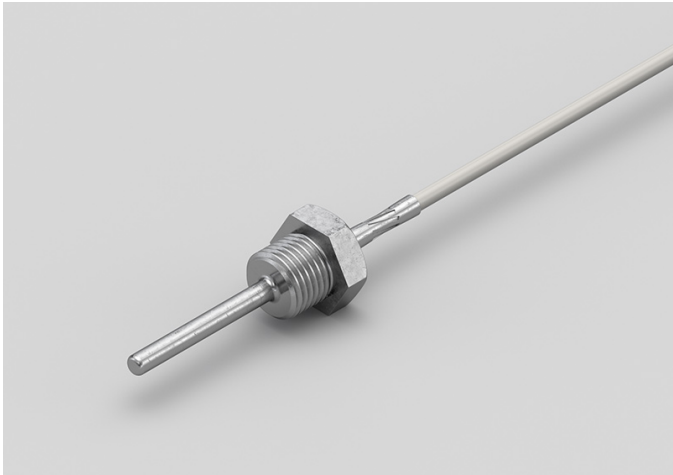
TEMPERATURE RANGE	(-30 +80)°C
MODEL	With connector
SENSOR	PT100
CAPSULE	Diameter 4x40 mm
CABLE	PVC
TERMINITIONS	Tin-plated, tips, connectors (other terminations available on request)
RESPONSE TIME	10 s in non-static liquid at 63.2% (depends on configuration)
IDENTIFICATION	Laser on cable, label (customizable)
DECLARATIONS OF CONFORMITY	CE MARKING, CONFLICT MINERALS, REACH, REACH, ROHS

GPM05C

PROBES WITH WELDED  
THREADED CONNECTION

PRODUCT FAMILY 15CR05

Probe with connector, PT100 sensor, in PVC cable, diameter 4x40 mm capsule. Suitable for temperature sensing in laboratory equipment and machinery, in refrigeration and air conditioning applications, in air quality control applications, in heating applications, in the field of renewable energy and in the food field.



TECHNICAL DATA

TEMPERATURE RANGE	(-30 +80)°C
MODEL	With connector
SENSOR	PT100
CAPSULE	Diameter 4x40 mm
CABLE	PVC
TERMINITIONS	Tin-plated, tips, connectors (other terminations available on request)
RESPONSE TIME	10 s in non-static liquid at 63.2% (depends on configuration)
IDENTIFICATION	Laser on cable, label (customizable)
DECLARATIONS OF CONFORMITY	CE MARKING, CONFLICT MINERALS, REACH, REACH, ROHS

**GTM03C**

# PROBES WITH THREADED CONNECTION

**PRODUCT FAMILY 15CR15**

Probe with connector, PT100 sensor, in Teflon cable, M6 L. 30,5 mm capsule. Suitable for temperature sensing in laboratory equipment and machinery, in refrigeration and air conditioning applications, in heating applications, in the food field and in the industrial field.



## TECHNICAL DATA

TEMPERATURE RANGE	(-50 +250)°C
MODEL	With connector
SENSOR	PT100
CAPSULE	M6 L. 30,5 mm
CABLE	Teflon
TERMINITIONS	Tin-plated, tips, connectors (other terminations available on request)
RESPONSE TIME	10 s in non-static liquid at 63.2% (depends on configuration)
IDENTIFICATION	Laser on cable, label (customizable)
DECLARATIONS OF CONFORMITY	CE MARKING, CONFLICT MINERALS, REACH, REACH, ROHS

GTM04C

# PROBES WITH WELDED THREADED CONNECTION

PRODUCT FAMILY 15CR05

Probe with connector, PT100 sensor, in Teflon cable, diameter 6x60 mm capsule. Suitable for temperature sensing in laboratory equipment and machinery, in refrigeration and air conditioning applications, in heating applications, in the food field and in the industrial field.



## TECHNICAL DATA

TEMPERATURE RANGE	(-50 +250)°C
MODEL	With connector
SENSOR	PT100
CAPSULE	Diameter 6x60 mm
CABLE	Teflon
TERMINITIONS	Tin-plated, tips, connectors (other terminations available on request)
RESPONSE TIME	10 s in non-static liquid at 63.2% (depends on configuration)
IDENTIFICATION	Laser on cable, label (customizable)
DECLARATIONS OF CONFORMITY	CE MARKING, CONFLICT MINERALS, REACH, REACH, ROHS

GTM05C

PROBES WITH SLIDING  
THREADED CONNECTION

PRODUCT FAMILY 15CR10

Probe with connector, PT100 sensor, in Teflon cable, diameter 6x60 mm capsule. Suitable for temperature sensing in laboratory equipment and machinery, in refrigeration and air conditioning applications, in heating applications, in the food field and in the industrial field.



TECHNICAL DATA

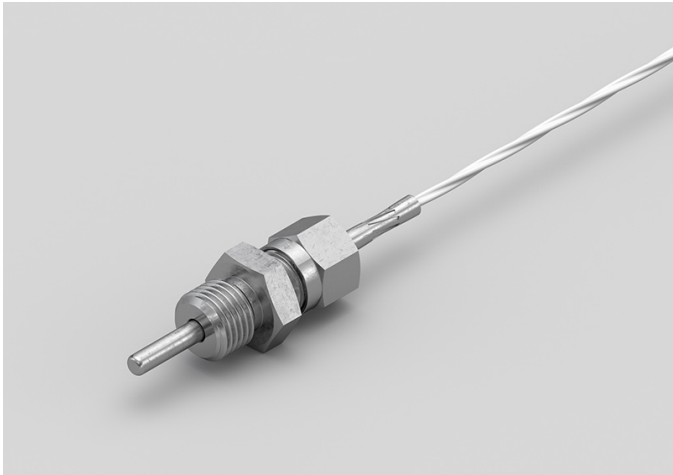
TEMPERATURE RANGE	(-50 +250)°C
MODEL	With connector
SENSOR	PT100
CAPSULE	Diameter 6x60 mm
CABLE	Teflon
TERMINITIONS	Tin-plated, tips, connectors (other terminations available on request)
RESPONSE TIME	10 s in non-static liquid at 63.2% (depends on configuration)
IDENTIFICATION	Laser on cable, label (customizable)
DECLARATIONS OF CONFORMITY	CE MARKING, CONFLICT MINERALS, REACH, REACH, ROHS

GTM06C

PROBES WITH SLIDING  
THREADED CONNECTION

PRODUCT FAMILY 15CR10

Probe with connector, PT100 sensor, in Teflon cable, diameter 4x40 mm capsule. Suitable for temperature sensing in laboratory equipment and machinery, in refrigeration and air conditioning applications, in air quality control applications, in heating applications, in the field of renewable energy, in the food field and in the industrial field.



TECHNICAL DATA

TEMPERATURE RANGE	(-50 +250)°C
MODEL	With connector
SENSOR	PT100
CAPSULE	Diameter 4x40 mm
CABLE	Teflon
TERMINITIONS	Tin-plated, tips, connectors (other terminations available on request)
RESPONSE TIME	10 s in non-static liquid at 63.2% (depends on configuration)
IDENTIFICATION	Laser on cable, label (customizable)
DECLARATIONS OF CONFORMITY	CE MARKING, CONFLICT MINERALS, REACH, REACH, ROHS



GTM07C

PROBES WITH WELDED  
THREADED CONNECTION

PRODUCT FAMILY 15CR05

Probe with connector, PT100 sensor, in Teflon cable, diameter 4x40 mm capsule. Suitable for temperature sensing in laboratory equipment and machinery, in refrigeration and air conditioning applications, in air quality control applications, in heating applications, in the field of renewable energy, in the food field and in the industrial field.



TECHNICAL DATA

TEMPERATURE RANGE	(-50 +250)°C
MODEL	With connector
SENSOR	PT100
CAPSULE	Diameter 4x40 mm
CABLE	Teflon
TERMINITIONS	Tin-plated, tips, connectors (other terminations available on request)
RESPONSE TIME	10 s in non-static liquid at 63.2% (depends on configuration)
IDENTIFICATION	Laser on cable, label (customizable)
DECLARATIONS OF CONFORMITY	CE MARKING, CONFLICT MINERALS, REACH, REACH, ROHS

GVM00C

# PROBES WITH THREADED CONNECTION

PRODUCT FAMILY 15CR15

Probe with connector, PT100 sensor, in glass fibre cable, M6 L. 30,5 mm capsule. Suitable for temperature sensing in laboratory equipment and machinery, in heating applications and in the food field.



## TECHNICAL DATA

TEMPERATURE RANGE	(0 +350)°C
MODEL	With connector
SENSOR	PT100
CAPSULE	M6 L. 30,5 mm
CABLE	Glass fibre
TERMINITIONS	Tin-plated, tips, connectors (other terminations available on request)
RESPONSE TIME	10 s in non-static liquid at 63.2% (depends on configuration)
IDENTIFICATION	Laser on cable, label (customizable)
DECLARATIONS OF CONFORMITY	CE MARKING, CONFLICT MINERALS, REACH, REACH, ROHS

GVM01C

PROBES WITH WELDED  
THREADED CONNECTION

PRODUCT FAMILY 15CR05

Probe with connector, PT100 sensor, in glass fibre cable, diameter 6x60 mm capsule. Suitable for temperature sensing in laboratory equipment and machinery, in heating applications, in the food field and in the industrial field.



TECHNICAL DATA

TEMPERATURE RANGE	(0 +350)°C
MODEL	With connector
SENSOR	PT100
CAPSULE	Diameter 6x60 mm
CABLE	Glass fibre
TERMINITIONS	Tin-plated, tips, connectors (other terminations available on request)
RESPONSE TIME	10 s in non-static liquid at 63.2% (depends on configuration)
IDENTIFICATION	Laser on cable, label (customizable)
DECLARATIONS OF CONFORMITY	CE MARKING, CONFLICT MINERALS, REACH, REACH, ROHS

GVM02C

PROBES WITH SLIDING  
THREADED CONNECTION

PRODUCT FAMILY 15CR10

Probe with connector, PT100 sensor, in glass fibre cable, diameter 6x60 mm capsule. Suitable for temperature sensing in laboratory equipment and machinery, in heating applications, in the food field and in the industrial field.



TECHNICAL DATA

TEMPERATURE RANGE	(0 +350)°C
MODEL	With connector
SENSOR	PT100
CAPSULE	Diameter 6x60 mm
CABLE	Glass fibre
TERMINITIONS	Tin-plated, tips, connectors (other terminations available on request)
RESPONSE TIME	10 s in non-static liquid at 63.2% (depends on configuration)
IDENTIFICATION	Laser on cable, label (customizable)
DECLARATIONS OF CONFORMITY	CE MARKING, CONFLICT MINERALS, REACH, REACH, ROHS

**GVM03C**

# PROBES WITH SLIDING THREADED CONNECTION

**PRODUCT FAMILY 15CR10**

Probe with connector, PT100 sensor, in glass fibre cable, diameter 4x40 mm capsule. Suitable for temperature sensing in laboratory equipment and machinery, in refrigeration and air conditioning applications, in air quality control applications, in heating applications, in the field of renewable energy, in the food field and in the industrial field.



## TECHNICAL DATA

TEMPERATURE RANGE	(0 +250)°C
MODEL	With connector
SENSOR	PT100
CAPSULE	Diameter 4x40 mm
CABLE	Glass fibre
TERMINITIONS	Tin-plated, tips, connectors (other terminations available on request)
RESPONSE TIME	10 s in non-static liquid at 63.2% (depends on configuration)
IDENTIFICATION	Laser on cable, label (customizable)
DECLARATIONS OF CONFORMITY	CE MARKING, CONFLICT MINERALS, REACH, REACH, ROHS

GVM04C

PROBES WITH WELDED  
THREADED CONNECTION

PRODUCT FAMILY 15CR05

Probe with connector, PT100 sensor, in glass fibre cable, diameter 4x40 mm capsule. Suitable for temperature sensing in laboratory equipment and machinery, in refrigeration and air conditioning applications, in air quality control applications, in heating applications, in the field of renewable energy, in the food field and in the industrial field.



TECHNICAL DATA

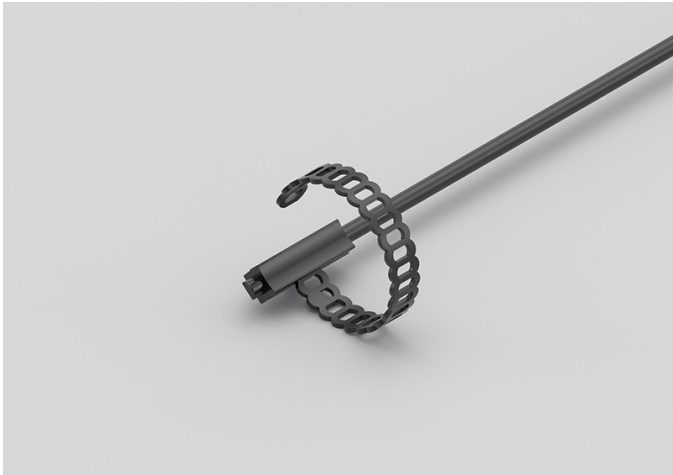
TEMPERATURE RANGE	(0 +250)°C
MODEL	With connector
SENSOR	PT100
CAPSULE	Diameter 4x40 mm
CABLE	Glass fibre
TERMINITIONS	Tin-plated, tips, connectors (other terminations available on request)
RESPONSE TIME	10 s in non-static liquid at 63.2% (depends on configuration)
IDENTIFICATION	Laser on cable, label (customizable)
DECLARATIONS OF CONFORMITY	CE MARKING, CONFLICT MINERALS, REACH, REACH, ROHS

IDI01C

# IP68 RUBBER BRACELET PROBES

## PRODUCT FAMILY 30GB05

Probe with bracelet, PT1000 sensor, TPE round cable, 6x6x15 mm capsule. Suitable for temperature sensing in air quality control applications.



## TECHNICAL DATA

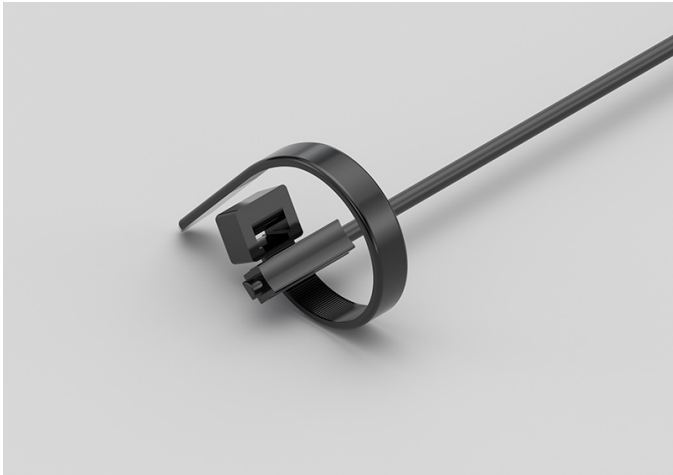
TEMPERATURE RANGE	(-50 +110)°C
MODEL	Bracelet
SENSOR	PT1000
CAPSULE	6x6x15 mm
CABLE	TPE round
TERMINITIONS	Tin-plated, tips, connectors (other terminations available on request)
RESPONSE TIME	10 s in non-static liquid at 63.2% (depends on configuration)
IDENTIFICATION	Laser on cable, label (customizable)
DECLARATIONS OF CONFORMITY	CE MARKING, CONFLICT MINERALS, REACH, REACH, ROHS

IDI02C

# IP68 RUBBER BRACELET PROBE WITH METAL CLAMP

PRODUCT FAMILY 30GB06

Probe with bracelet, PT1000 sensor, TPE round cable, 6x6x15 mm capsule. Suitable for temperature sensing in air quality control applications.



## TECHNICAL DATA

TEMPERATURE RANGE	(-50 +110)°C
MODEL	Bracelet
SENSOR	PT1000
CAPSULE	6x6x15 mm
CABLE	TPE round
TERMINITIONS	Tin-plated, tips, connectors (other terminations available on request)
RESPONSE TIME	10 s in non-static liquid at 63.2% (depends on configuration)
IDENTIFICATION	Laser on cable, label (customizable)
DECLARATIONS OF CONFORMITY	CE MARKING, CONFLICT MINERALS, REACH, REACH, ROHS



**IDM00C**

# PROBES WITH THREADED CONNECTION

**PRODUCT FAMILY 15CR15**

Probe with connector, PT1000 sensor, TPE round cable, M4 L. 34,85 mm capsule. Suitable for temperature sensing in laboratory equipment and machinery, in the electrical motors field and in the field of renewable energy.



## TECHNICAL DATA

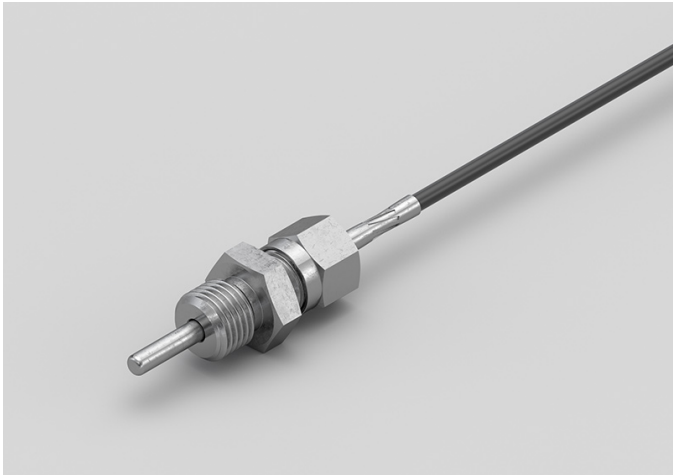
TEMPERATURE RANGE	(-50 +110)°C
MODEL	With connector
SENSOR	PT1000
CAPSULE	M4 L. 34,85 mm
CABLE	TPE round
TERMINITIONS	Tin-plated, tips, connectors (other terminations available on request)
RESPONSE TIME	10 s in non-static liquid at 63.2% (depends on configuration)
IDENTIFICATION	Laser on cable, label (customizable)
DECLARATIONS OF CONFORMITY	CE MARKING, CONFLICT MINERALS, REACH, REACH, ROHS

IDM01C

PROBES WITH SLIDING  
THREADED CONNECTION

PRODUCT FAMILY 15CR10

Probe with connector, PT1000 sensor, TPE round cable, diameter 4x40 mm capsule. Suitable for temperature sensing in heating applications and in the field of renewable energy.



TECHNICAL DATA

TEMPERATURE RANGE	(-50 +110)°C
MODEL	With connector
SENSOR	PT1000
CAPSULE	Diameter 4x40 mm
CABLE	TPE round
TERMINITIONS	Tin-plated, tips, connectors (other terminations available on request)
RESPONSE TIME	10 s in non-static liquid at 63.2% (depends on configuration)
IDENTIFICATION	Laser on cable, label (customizable)
DECLARATIONS OF CONFORMITY	CE MARKING, CONFLICT MINERALS, REACH, REACH, ROHS

IDM02C

PROBES WITH WELDED  
THREADED CONNECTION

PRODUCT FAMILY 15CR05

Probe with connector, PT1000 sensor, TPE round cable, diameter 4x40 mm capsule. Suitable for temperature sensing in refrigeration and air conditioning applications, in air quality control applications, in the field of renewable energy and in the food field.



TECHNICAL DATA

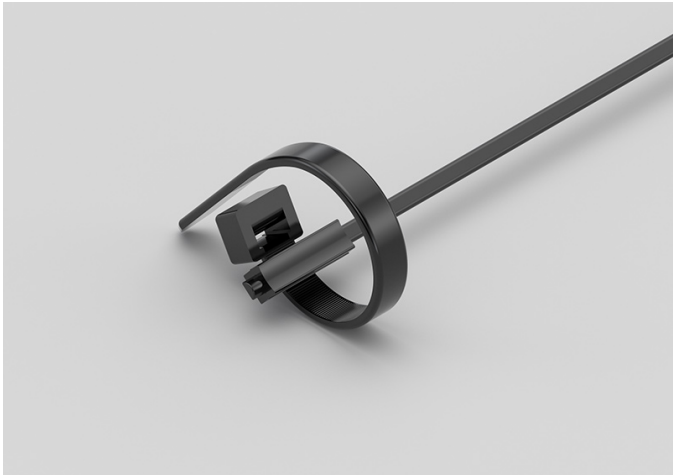
TEMPERATURE RANGE	(-50 +110)°C
MODEL	With connector
SENSOR	PT1000
CAPSULE	Diameter 4x40 mm
CABLE	TPE round
TERMINITIONS	Tin-plated, tips, connectors (other terminations available on request)
RESPONSE TIME	10 s in non-static liquid at 63.2% (depends on configuration)
IDENTIFICATION	Laser on cable, label (customizable)
DECLARATIONS OF CONFORMITY	CE MARKING, CONFLICT MINERALS, REACH, REACH, ROHS

IEI05C

# IP67 RUBBER BRACELET PROBES WITH METAL CLAMP

PRODUCT FAMILY 30GB08

Probe with bracelet, PT1000 sensor, TPE flat cable, 6x6x15 mm capsule. Suitable for temperature sensing in heating applications, in the field of renewable energy and in the food field.



## TECHNICAL DATA

TEMPERATURE RANGE	(-50 +120)°C
MODEL	Bracelet
SENSOR	PT1000
CAPSULE	6x6x15 mm
CABLE	TPE flat
TERMINITIONS	Tin-plated, tips, connectors (other terminations available on request)
RESPONSE TIME	10 s in non-static liquid at 63.2% (depends on configuration)
IDENTIFICATION	Laser on cable, label (customizable)
DECLARATIONS OF CONFORMITY	CE MARKING, CONFLICT MINERALS, REACH, REACH, ROHS

IGG02C

PROBES WITH METAL  
CAPSULE BENT AT 90  
DEGREES

PRODUCT FAMILY 15CA30

Probe with steel capsule, PT1000 sensor, in silicone cable, diameter 6X100 mm capsule. Suitable for temperature sensing in heating applications, in the field of renewable energy and in the food field.



TECHNICAL DATA

TEMPERATURE RANGE	(-50 +200)°C
MODEL	Steel capsule
SENSOR	PT1000
CAPSULE	Diameter 6X100 mm
CABLE	Silicone
TERMINITIONS	Tin-plated, tips, connectors (other terminations available on request)
RESPONSE TIME	10 s in non-static liquid at 63.2% (depends on configuration)
IDENTIFICATION	Laser on cable, label (customizable)
DECLARATIONS OF CONFORMITY	CE MARKING, CONFLICT MINERALS, REACH, REACH, ROHS

IGM06C

PROBES WITH SLIDING  
THREADED CONNECTION

PRODUCT FAMILY 15CR10

Probe with connector, PT1000 sensor, in silicone cable, diameter 4x40 mm capsule. Suitable for temperature sensing in heating applications, in the field of renewable energy and in the food field.



TECHNICAL DATA

TEMPERATURE RANGE	(-50 +200)°C
MODEL	With connector
SENSOR	PT1000
CAPSULE	Diameter 4x40 mm
CABLE	Silicone
TERMINITIONS	Tin-plated, tips, connectors (other terminations available on request)
RESPONSE TIME	10 s in non-static liquid at 63.2% (depends on configuration)
IDENTIFICATION	Laser on cable, label (customizable)
DECLARATIONS OF CONFORMITY	CE MARKING, CONFLICT MINERALS, REACH, REACH, ROHS

IGM07C

STANDARD EYELET PROBES

PRODUCT FAMILY 15C005

Contact probe with PT1000 sensor, in silicone cable, diameter 4x40 mm capsule. Suitable for temperature sensing in refrigeration and air conditioning applications, in air quality control applications and in the food field.



TECHNICAL DATA

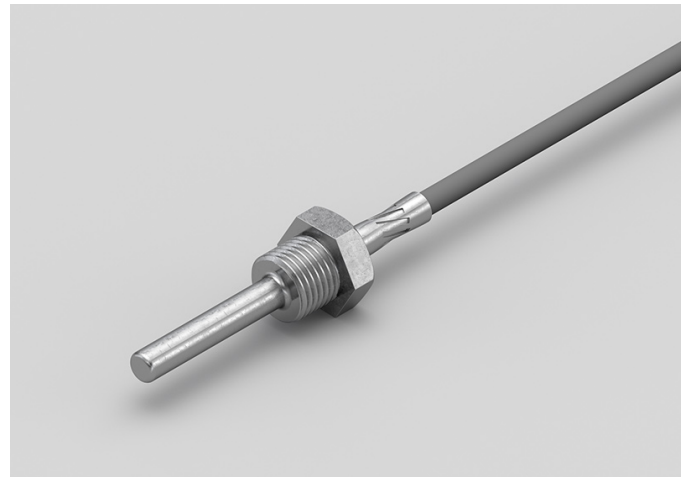
TEMPERATURE RANGE	(-50 +200)°C
MODEL	Contact
SENSOR	PT1000
CAPSULE	Diameter 4x40 mm
CABLE	Silicone
TERMINITIONS	Tin-plated, tips, connectors (other terminations available on request)
RESPONSE TIME	10 s in non-static liquid at 63.2% (depends on configuration)
IDENTIFICATION	Laser on cable, label (customizable)
DECLARATIONS OF CONFORMITY	CE MARKING, CONFLICT MINERALS, REACH, REACH, ROHS

**IGM08C**

# PROBES WITH WELDED THREADED CONNECTION

**PRODUCT FAMILY 15CR05**

Probe with connector, PT1000 sensor, in silicone cable, diameter 6x60 mm capsule. Suitable for temperature sensing in refrigeration and air conditioning applications, in air quality control applications and in the food field.



## TECHNICAL DATA

TEMPERATURE RANGE	(-50 +200)°C
MODEL	With connector
SENSOR	PT1000
CAPSULE	Diameter 6x60 mm
CABLE	Silicone
TERMINITIONS	Tin-plated, tips, connectors (other terminations available on request)
RESPONSE TIME	10 s in non-static liquid at 63.2% (depends on configuration)
IDENTIFICATION	Laser on cable, label (customizable)
DECLARATIONS OF CONFORMITY	CE MARKING, CONFLICT MINERALS, REACH, REACH, ROHS

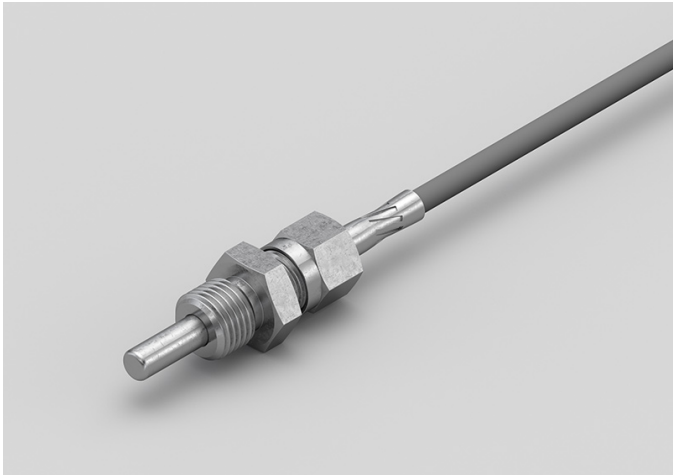


IGM09C

PROBES WITH SLIDING  
THREADED CONNECTION

PRODUCT FAMILY 15CR10

Probe with connector, PT1000 sensor, in silicone cable, diameter 6x60 mm capsule. Suitable for temperature sensing in refrigeration and air conditioning applications, in air quality control applications and in the food field.



TECHNICAL DATA

TEMPERATURE RANGE	(-50 +200)°C
MODEL	With connector
SENSOR	PT1000
CAPSULE	Diameter 6x60 mm
CABLE	Silicone
TERMINITIONS	Tin-plated, tips, connectors (other terminations available on request)
RESPONSE TIME	10 s in non-static liquid at 63.2% (depends on configuration)
IDENTIFICATION	Laser on cable, label (customizable)
DECLARATIONS OF CONFORMITY	CE MARKING, CONFLICT MINERALS, REACH, REACH, ROHS

IGM10C

PROBES WITH THREADED CONNECTION

PRODUCT FAMILY 15CR15

Probe with connector, PT1000 sensor, in silicone cable, M4 L. 34,85 mm capsule. Suitable for temperature sensing in refrigeration and air conditioning applications, in air quality control applications and in the food field.



TECHNICAL DATA

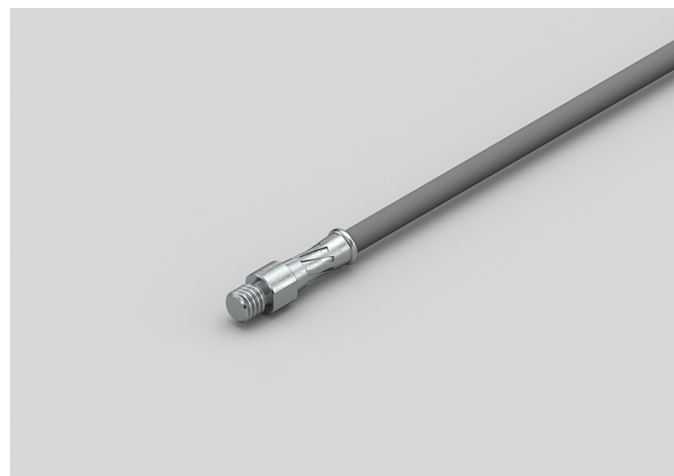
TEMPERATURE RANGE	(-50 +200)°C
MODEL	With connector
SENSOR	PT1000
CAPSULE	M4 L. 34,85 mm
CABLE	Silicone
TERMINITIONS	Tin-plated, tips, connectors (other terminations available on request)
RESPONSE TIME	10 s in non-static liquid at 63.2% (depends on configuration)
IDENTIFICATION	Laser on cable, label (customizable)
DECLARATIONS OF CONFORMITY	CE MARKING, CONFLICT MINERALS, REACH, REACH, ROHS

## IGM11C

# PROBES WITH THREADED CONNECTION

## PRODUCT FAMILY 15CR15

Probe with connector, PT1000 sensor, in silicone cable, M6 L. 30,5 mm capsule. Suitable for temperature sensing in heating applications and in the food field.



## TECHNICAL DATA

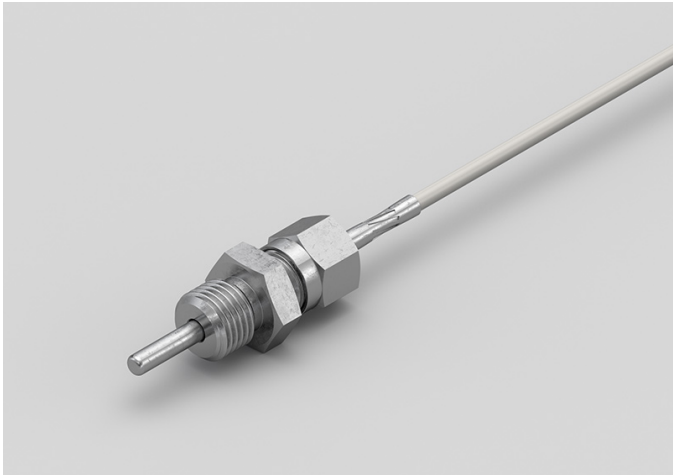
TEMPERATURE RANGE	(-50 +200)°C
MODEL	With connector
SENSOR	PT1000
CAPSULE	M6 L. 30,5 mm
CABLE	Silicone
TERMINITIONS	Tin-plated, tips, connectors (other terminations available on request)
RESPONSE TIME	10 s in non-static liquid at 63.2% (depends on configuration)
IDENTIFICATION	Laser on cable, label (customizable)
DECLARATIONS OF CONFORMITY	CE MARKING, CONFLICT MINERALS, REACH, REACH, ROHS

IPM00C

PROBES WITH SLIDING  
THREADED CONNECTION

PRODUCT FAMILY 15CR10

Probe with connector, PT1000 sensor, in PVC cable, diameter 4x40 mm capsule. Suitable for temperature sensing in laboratory equipment and machinery, in refrigeration and air conditioning applications, in air quality control applications, in heating applications, in the field of renewable energy and in the food field.



TECHNICAL DATA

TEMPERATURE RANGE	(-30 +80)°C
MODEL	With connector
SENSOR	PT1000
CAPSULE	Diameter 4x40 mm
CABLE	PVC
TERMINITIONS	Tin-plated, tips, connectors (other terminations available on request)
RESPONSE TIME	10 s in non-static liquid at 63.2% (depends on configuration)
IDENTIFICATION	Laser on cable, label (customizable)
DECLARATIONS OF CONFORMITY	CE MARKING, CONFLICT MINERALS, REACH, REACH, ROHS

IPM01C

PROBES WITH WELDED  
THREADED CONNECTION

PRODUCT FAMILY 15CR05

Probe with connector, PT1000 sensor, in PVC cable, diameter 4x40 mm capsule. Suitable for temperature sensing in laboratory equipment and machinery, in refrigeration and air conditioning applications, in air quality control applications, in the field of renewable energy and in the food field.



TECHNICAL DATA

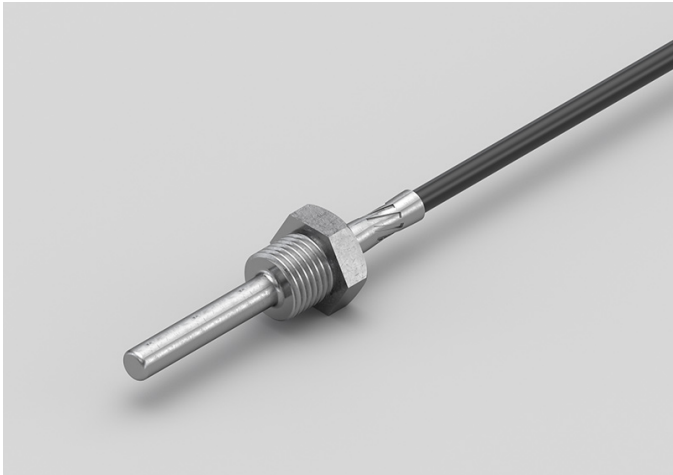
TEMPERATURE RANGE	(-30 +80)°C
MODEL	With connector
SENSOR	PT1000
CAPSULE	Diameter 4x40 mm
CABLE	PVC
TERMINITIONS	Tin-plated, tips, connectors (other terminations available on request)
RESPONSE TIME	10 s in non-static liquid at 63.2% (depends on configuration)
IDENTIFICATION	Laser on cable, label (customizable)
DECLARATIONS OF CONFORMITY	CE MARKING, CONFLICT MINERALS, REACH, REACH, ROHS

IPM02C

PROBES WITH WELDED  
THREADED CONNECTION

PRODUCT FAMILY 15CR05

Probe with connector, PT1000 sensor, in PVC cable, diameter 6x60 mm capsule. Suitable for temperature sensing in laboratory equipment and machinery, in refrigeration and air conditioning applications, in air quality control applications, in the field of renewable energy and in the food field.



TECHNICAL DATA

TEMPERATURE RANGE	(-30 +105)°C
MODEL	With connector
SENSOR	PT1000
CAPSULE	Diameter 6x60 mm
CABLE	PVC
TERMINITIONS	Tin-plated, tips, connectors (other terminations available on request)
RESPONSE TIME	10 s in non-static liquid at 63.2% (depends on configuration)
IDENTIFICATION	Laser on cable, label (customizable)
DECLARATIONS OF CONFORMITY	CE MARKING, CONFLICT MINERALS, REACH, REACH, ROHS

IPM03C

PROBES WITH SLIDING  
THREADED CONNECTION

PRODUCT FAMILY 15CR10

Probe with connector, PT1000 sensor, in PVC cable, diameter 6x60 mm capsule. Suitable for temperature sensing in laboratory equipment and machinery, in refrigeration and air conditioning applications, in air quality control applications, in the field of renewable energy and in the food field.



TECHNICAL DATA

TEMPERATURE RANGE	(-30 +105)°C
MODEL	With connector
SENSOR	PT1000
CAPSULE	Diameter 6x60 mm
CABLE	PVC
TERMINITIONS	Tin-plated, tips, connectors (other terminations available on request)
RESPONSE TIME	10 s in non-static liquid at 63.2% (depends on configuration)
IDENTIFICATION	Laser on cable, label (customizable)
DECLARATIONS OF CONFORMITY	CE MARKING, CONFLICT MINERALS, REACH, REACH, ROHS

IPM04C

PROBES WITH THREADED CONNECTION

PRODUCT FAMILY 15CR15

Probe with connector, PT1000 sensor, in PVC cable, M4 L. 34,85 mm capsule. Suitable for temperature sensing in laboratory equipment and machinery, in heating applications, in the field of renewable energy and in the food field.



TECHNICAL DATA

TEMPERATURE RANGE	(-30 +80)°C
MODEL	With connector
SENSOR	PT1000
CAPSULE	M4 L. 34,85 mm
CABLE	PVC
TERMINITIONS	Tin-plated, tips, connectors (other terminations available on request)
RESPONSE TIME	10 s in non-static liquid at 63.2% (depends on configuration)
IDENTIFICATION	Laser on cable, label (customizable)
DECLARATIONS OF CONFORMITY	CE MARKING, CONFLICT MINERALS, REACH, REACH, ROHS



## IPM05C

# PROBES WITH THREADED CONNECTION

## PRODUCT FAMILY 15CR15

Probe with connector, PT1000 sensor, in PVC cable, M6 L. 30,5 mm capsule. Suitable for temperature sensing in laboratory equipment and machinery, in heating applications, in the field of renewable energy and in the food field.



## TECHNICAL DATA

TEMPERATURE RANGE	(-30 +105)°C
MODEL	With connector
SENSOR	PT1000
CAPSULE	M6 L. 30,5 mm
CABLE	PVC
TERMINITIONS	Tin-plated, tips, connectors (other terminations available on request)
RESPONSE TIME	10 s in non-static liquid at 63.2% (depends on configuration)
IDENTIFICATION	Laser on cable, label (customizable)
DECLARATIONS OF CONFORMITY	CE MARKING, CONFLICT MINERALS, REACH, REACH, ROHS

ITM01C

PROBES WITH SLIDING  
THREADED CONNECTION

PRODUCT FAMILY 15CR10

Probe with connector, PT1000 sensor, in Teflon cable, diameter 4x40 mm capsule. Suitable for temperature sensing in laboratory equipment and machinery, in heating applications and in the food field.



TECHNICAL DATA

TEMPERATURE RANGE	(-50 +250)°C
MODEL	With connector
SENSOR	PT1000
CAPSULE	Diameter 4x40 mm
CABLE	Teflon
TERMINITIONS	Tin-plated, tips, connectors (other terminations available on request)
RESPONSE TIME	10 s in non-static liquid at 63.2% (depends on configuration)
IDENTIFICATION	Laser on cable, label (customizable)
DECLARATIONS OF CONFORMITY	CE MARKING, CONFLICT MINERALS, REACH, REACH, ROHS

ITM02C

PROBES WITH WELDED  
THREADED CONNECTION

PRODUCT FAMILY 15CR05

Probe with connector, PT1000 sensor, in Teflon cable, diameter 4x40 mm capsule. Suitable for temperature sensing in laboratory equipment and machinery, in heating applications and in the food field.



TECHNICAL DATA

TEMPERATURE RANGE	(-50 +250)°C
MODEL	With connector
SENSOR	PT1000
CAPSULE	Diameter 4x40 mm
CABLE	Teflon
TERMINITIONS	Tin-plated, tips, connectors (other terminations available on request)
RESPONSE TIME	10 s in non-static liquid at 63.2% (depends on configuration)
IDENTIFICATION	Laser on cable, label (customizable)
DECLARATIONS OF CONFORMITY	CE MARKING, CONFLICT MINERALS, REACH, REACH, ROHS

ITM03C

PROBES WITH WELDED  
THREADED CONNECTION

PRODUCT FAMILY 15CR05

Probe with connector, PT1000 sensor, in Teflon cable, diameter 6x60 mm capsule. Suitable for temperature sensing in laboratory equipment and machinery, in heating applications, in the food field and in the industrial field.



TECHNICAL DATA

TEMPERATURE RANGE	(-50 +250)°C
MODEL	With connector
SENSOR	PT1000
CAPSULE	Diameter 6x60 mm
CABLE	Teflon
TERMINITIONS	Tin-plated, tips, connectors (other terminations available on request)
RESPONSE TIME	10 s in non-static liquid at 63.2% (depends on configuration)
IDENTIFICATION	Laser on cable, label (customizable)
DECLARATIONS OF CONFORMITY	CE MARKING, CONFLICT MINERALS, REACH, REACH, ROHS

ITM04C

PROBES WITH SLIDING  
THREADED CONNECTION

PRODUCT FAMILY 15CR10

Probe with connector, PT1000 sensor, in Teflon cable, diameter 6x60 mm capsule. Suitable for temperature sensing in laboratory equipment and machinery, in heating applications, in the food field and in the industrial field.



TECHNICAL DATA

TEMPERATURE RANGE	(-50 +250)°C
MODEL	With connector
SENSOR	PT1000
CAPSULE	Diameter 6x60 mm
CABLE	Teflon
TERMINITIONS	Tin-plated, tips, connectors (other terminations available on request)
RESPONSE TIME	10 s in non-static liquid at 63.2% (depends on configuration)
IDENTIFICATION	Laser on cable, label (customizable)
DECLARATIONS OF CONFORMITY	CE MARKING, CONFLICT MINERALS, REACH, REACH, ROHS

ITM05C

PROBES WITH THREADED CONNECTION

PRODUCT FAMILY 15CR15

Probe with connector, PT1000 sensor, in Teflon cable, M6 L. 30,5 mm capsule. Suitable for temperature sensing in laboratory equipment and machinery, in heating applications and in the food field.



TECHNICAL DATA

TEMPERATURE RANGE	(-50 +250)°C
MODEL	With connector
SENSOR	PT1000
CAPSULE	M6 L. 30,5 mm
CABLE	Teflon
TERMINITIONS	Tin-plated, tips, connectors (other terminations available on request)
RESPONSE TIME	10 s in non-static liquid at 63.2% (depends on configuration)
IDENTIFICATION	Laser on cable, label (customizable)
DECLARATIONS OF CONFORMITY	CE MARKING, CONFLICT MINERALS, REACH, REACH, ROHS

**IVM00C**

# PROBES WITH SLIDING THREADED CONNECTION

**PRODUCT FAMILY 15CR10**

Probe with connector, PT1000 sensor, in glass fibre cable, diameter 4x40 mm capsule. Suitable for temperature sensing in laboratory equipment and machinery, in heating applications, in the field of renewable energy, in the food field and in the industrial field.



## TECHNICAL DATA

TEMPERATURE RANGE	(0 +250)°C
MODEL	With connector
SENSOR	PT1000
CAPSULE	Diameter 4x40 mm
CABLE	Glass fibre
TERMINITIONS	Tin-plated, tips, connectors (other terminations available on request)
RESPONSE TIME	10 s in non-static liquid at 63.2% (depends on configuration)
IDENTIFICATION	Laser on cable, label (customizable)
DECLARATIONS OF CONFORMITY	CE MARKING, CONFLICT MINERALS, REACH, REACH, ROHS

IVM01C

PROBES WITH WELDED  
THREADED CONNECTION

PRODUCT FAMILY 15CR05

Probe with connector, PT1000 sensor, in glass fibre cable, diameter 4x40 mm capsule. Suitable for temperature sensing in laboratory equipment and machinery, in heating applications, in the field of renewable energy and in the food field.



TECHNICAL DATA

TEMPERATURE RANGE	(0 +250)°C
MODEL	With connector
SENSOR	PT1000
CAPSULE	Diameter 4x40 mm
CABLE	Glass fibre
TERMINITIONS	Tin-plated, tips, connectors (other terminations available on request)
RESPONSE TIME	10 s in non-static liquid at 63.2% (depends on configuration)
IDENTIFICATION	Laser on cable, label (customizable)
DECLARATIONS OF CONFORMITY	CE MARKING, CONFLICT MINERALS, REACH, REACH, ROHS



**IVM02C**

# PROBES WITH WELDED THREADED CONNECTION

**PRODUCT FAMILY 15CR05**

Probe with connector, PT1000 sensor, in glass fibre cable, diameter 6x60 mm capsule. Suitable for temperature sensing in laboratory equipment and machinery, in refrigeration and air conditioning applications, in heating applications, in the field of renewable energy, in the food field and in the industrial field.



## TECHNICAL DATA

TEMPERATURE RANGE	(0 +350)°C
MODEL	With connector
SENSOR	PT1000
CAPSULE	Diameter 6x60 mm
CABLE	Glass fibre
TERMINITIONS	Tin-plated, tips, connectors (other terminations available on request)
RESPONSE TIME	10 s in non-static liquid at 63.2% (depends on configuration)
IDENTIFICATION	Laser on cable, label (customizable)
DECLARATIONS OF CONFORMITY	CE MARKING, CONFLICT MINERALS, REACH, REACH, ROHS

**IVM03C**

# PROBES WITH SLIDING THREADED CONNECTION

**PRODUCT FAMILY 15CR10**

Probe with connector, PT1000 sensor, in glass fibre cable, diameter 6x60 mm capsule. Suitable for temperature sensing in laboratory equipment and machinery, in refrigeration and air conditioning applications, in heating applications, in the field of renewable energy, in the food field and in the industrial field.



## TECHNICAL DATA

TEMPERATURE RANGE	(0 +350)°C
MODEL	With connector
SENSOR	PT1000
CAPSULE	Diameter 6x60 mm
CABLE	Glass fibre
TERMINITIONS	Tin-plated, tips, connectors (other terminations available on request)
RESPONSE TIME	10 s in non-static liquid at 63.2% (depends on configuration)
IDENTIFICATION	Laser on cable, label (customizable)
DECLARATIONS OF CONFORMITY	CE MARKING, CONFLICT MINERALS, REACH, REACH, ROHS

**IVM04C**

# PROBES WITH THREADED CONNECTION

**PRODUCT FAMILY 15CR15**

Probe with connector, PT1000 sensor, in glass fibre cable, M6 L. 30,5 mm capsule. Suitable for temperature sensing in laboratory equipment and machinery, in heating applications, in the field of renewable energy and in the food field.



## TECHNICAL DATA

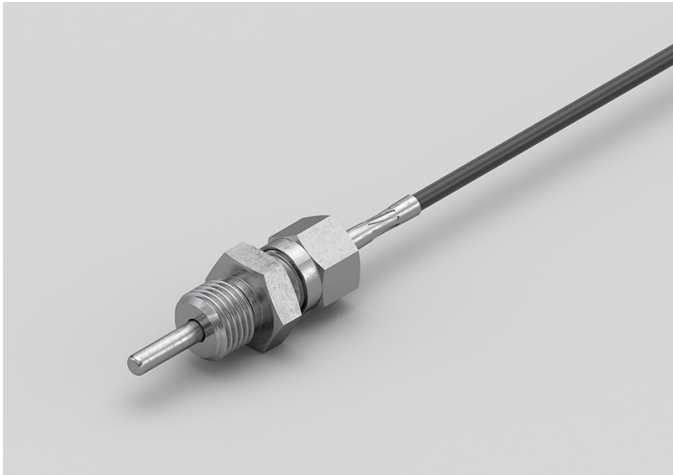
TEMPERATURE RANGE	(0 +350)°C
MODEL	With connector
SENSOR	PT1000
CAPSULE	M6 L. 30,5 mm
CABLE	Glass fibre
TERMINITIONS	Tin-plated, tips, connectors (other terminations available on request)
RESPONSE TIME	10 s in non-static liquid at 63.2% (depends on configuration)
IDENTIFICATION	Laser on cable, label (customizable)
DECLARATIONS OF CONFORMITY	CE MARKING, CONFLICT MINERALS, REACH, REACH, ROHS

NDM02C

PROBES WITH SLIDING  
THREADED CONNECTION

PRODUCT FAMILY 15CR10

Probe with connector, NTC sensor, TPE round cable, diameter 4x40 mm capsule. Suitable for temperature sensing in laboratory equipment and machinery.



TECHNICAL DATA

TEMPERATURE RANGE	(-50 +110)°C
MODEL	With connector
SENSOR	NTC
CAPSULE	Diameter 4x40 mm
CABLE	TPE round
TERMINITIONS	Tin-plated, tips, connectors (other terminations available on request)
RESPONSE TIME	10 s in non-static liquid at 63.2% (depends on configuration)
IDENTIFICATION	Laser on cable, label (customizable)
DECLARATIONS OF CONFORMITY	CE MARKING, CONFLICT MINERALS, MOCA, REACH, REACH, ROHS

NDM03C

PROBES WITH THREADED CONNECTION

PRODUCT FAMILY 15CR15

Probe with connector, NTC sensor, TPE round cable, M4 L. 34,85 mm capsule. Suitable for temperature sensing in laboratory equipment and machinery.



TECHNICAL DATA

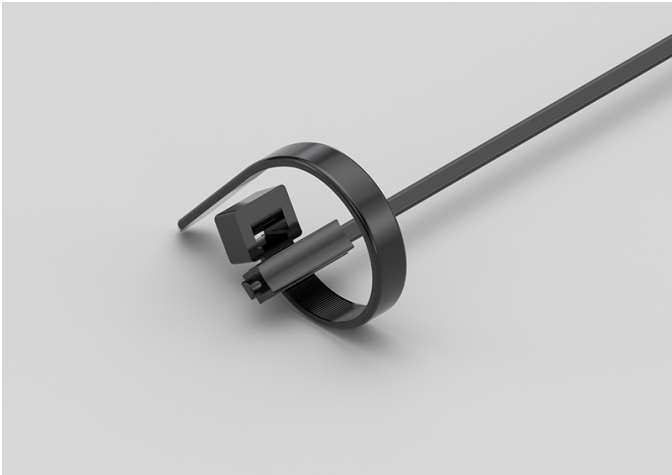
TEMPERATURE RANGE	(-50 +110)°C
MODEL	With connector
SENSOR	NTC
CAPSULE	M4 L. 34,85 mm
CABLE	TPE round
TERMINITIONS	Tin-plated, tips, connectors (other terminations available on request)
RESPONSE TIME	10 s in non-static liquid at 63.2% (depends on configuration)
IDENTIFICATION	Laser on cable, label (customizable)
DECLARATIONS OF CONFORMITY	CE MARKING, CONFLICT MINERALS, REACH, REACH, ROHS

NEI10C

IP67 RUBBER BRACELET  
PROBES WITH METAL  
CLAMP

PRODUCT FAMILY 30GB08

Probe with bracelet, NTC sensor, TPE flat cable, 6x6x15 mm capsule. Suitable for temperature sensing in laboratory equipment and machinery, in heating applications and in the food field.



TECHNICAL DATA

TEMPERATURE RANGE	(-50 +120)°C
MODEL	Bracelet
SENSOR	NTC
CAPSULE	6x6x15 mm
CABLE	TPE flat
TERMINITIONS	Tin-plated, tips, connectors (other terminations available on request)
RESPONSE TIME	10 s in non-static liquid at 63.2% (depends on configuration)
IDENTIFICATION	Laser on cable, label (customizable)
DECLARATIONS OF CONFORMITY	CE MARKING, CONFLICT MINERALS, REACH, REACH, ROHS

**NPM05C**

# PROBES WITH THREADED CONNECTION

**PRODUCT FAMILY 15CR15**

Probe with connector, NTC sensor, in PVC cable, M6 L. 30,5 mm capsule. Suitable for temperature sensing in laboratory equipment and machinery, in heating applications and in the food field.



## TECHNICAL DATA

TEMPERATURE RANGE	(-30 +105)°C
MODEL	With connector
SENSOR	NTC
CAPSULE	M6 L. 30,5 mm
CABLE	PVC
TERMINITIONS	Tin-plated, tips, connectors (other terminations available on request)
RESPONSE TIME	10 s in non-static liquid at 63.2% (depends on configuration)
IDENTIFICATION	Laser on cable, label (customizable)
DECLARATIONS OF CONFORMITY	CE MARKING, CONFLICT MINERALS, REACH, REACH, ROHS

**NPM06C**

# PROBES WITH THREADED CONNECTION

**PRODUCT FAMILY 15CR15**

Probe with connector, NTC sensor, in PVC cable, M4 L. 34,85 mm capsule. Suitable for temperature sensing in laboratory equipment and machinery, in heating applications and in the food field.



## TECHNICAL DATA

TEMPERATURE RANGE	(-30 +80)°C
MODEL	With connector
SENSOR	NTC
CAPSULE	M4 L. 34,85 mm
CABLE	PVC
TERMINITIONS	Tin-plated, tips, connectors (other terminations available on request)
RESPONSE TIME	10 s in non-static liquid at 63.2% (depends on configuration)
IDENTIFICATION	Laser on cable, label (customizable)
DECLARATIONS OF CONFORMITY	CE MARKING, CONFLICT MINERALS, REACH, REACH, ROHS



NPM07C

PROBES WITH SLIDING  
THREADED CONNECTION

PRODUCT FAMILY 15CR10

Probe with connector, NTC sensor, in PVC cable, diameter 6x60 mm capsule. Suitable for temperature sensing in heating applications and in the food field.



TECHNICAL DATA

TEMPERATURE RANGE	(-30 +105)°C
MODEL	With connector
SENSOR	NTC
CAPSULE	Diameter 6x60 mm
CABLE	PVC
TERMINITIONS	Tin-plated, tips, connectors (other terminations available on request)
RESPONSE TIME	10 s in non-static liquid at 63.2% (depends on configuration)
IDENTIFICATION	Laser on cable, label (customizable)
DECLARATIONS OF CONFORMITY	CE MARKING, CONFLICT MINERALS, REACH, REACH, ROHS

NQM00C

PROBES WITH WELDED  
THREADED CONNECTION

PRODUCT FAMILY 15CR05

Probe with connector, NTC sensor, in PVC cable, diameter 4x40 mm capsule. Suitable for temperature sensing in refrigeration and air conditioning applications and in the food field.



TECHNICAL DATA

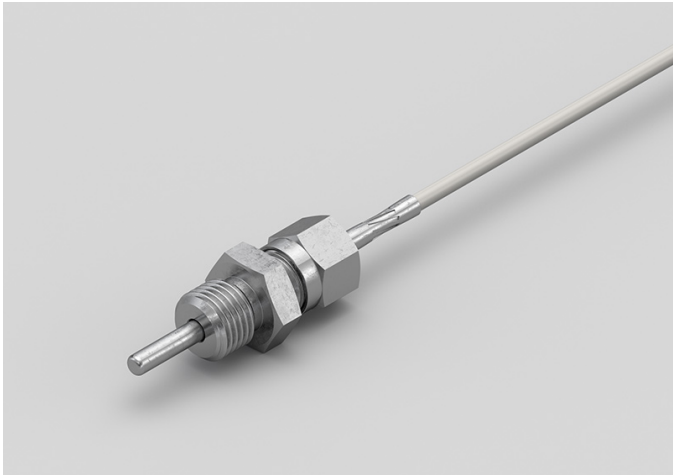
TEMPERATURE RANGE	(-30 +80)°C
MODEL	With connector
SENSOR	NTC
CAPSULE	Diameter 4x40 mm
CABLE	PVC
TERMINITIONS	Tin-plated, tips, connectors (other terminations available on request)
RESPONSE TIME	10 s in non-static liquid at 63.2% (depends on configuration)
IDENTIFICATION	Laser on cable, label (customizable)
DECLARATIONS OF CONFORMITY	CE MARKING, CONFLICT MINERALS, REACH, REACH, ROHS

NQM01C

PROBES WITH SLIDING  
THREADED CONNECTION

PRODUCT FAMILY 15CR10

Probe with connector, NTC sensor, in PVC cable, diameter 4x40 mm capsule. Suitable for temperature sensing in refrigeration and air conditioning applications and in the food field.



TECHNICAL DATA

TEMPERATURE RANGE	(-30 +80)°C
MODEL	With connector
SENSOR	NTC
CAPSULE	Diameter 4x40 mm
CABLE	PVC
TERMINITIONS	Tin-plated, tips, connectors (other terminations available on request)
RESPONSE TIME	10 s in non-static liquid at 63.2% (depends on configuration)
IDENTIFICATION	Laser on cable, label (customizable)
DECLARATIONS OF CONFORMITY	CE MARKING, CONFLICT MINERALS, REACH, REACH, ROHS

RGH03C

PROBES WITH METAL  
CAPSULE BENT AT 90  
DEGREES

PRODUCT FAMILY 15CA30

Probe with steel capsule, NTC sensor, in silicone cable, diameter 6X100 mm capsule. Suitable for temperature sensing in refrigeration and air conditioning applications and in the food field.



TECHNICAL DATA

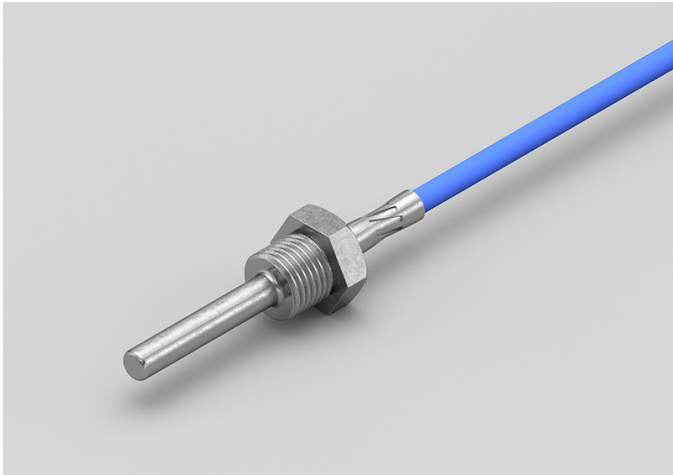
TEMPERATURE RANGE	(-50 +200)°C
MODEL	Steel capsule
SENSOR	NTC
CAPSULE	Diameter 6X100 mm
CABLE	Silicone
TERMINITIONS	Tin-plated, tips, connectors (other terminations available on request)
RESPONSE TIME	10 s in non-static liquid at 63.2% (depends on configuration)
IDENTIFICATION	Laser on cable, label (customizable)
DECLARATIONS OF CONFORMITY	CE MARKING, CONFLICT MINERALS, MOCA, REACH, REACH, ROHS

RGM02C

PROBES WITH WELDED  
THREADED CONNECTION

PRODUCT FAMILY 15CR05

Probe with connector, NTC sensor, in silicone cable, diameter 6x60 mm capsule. Suitable for temperature sensing in refrigeration and air conditioning applications and in the food field.



TECHNICAL DATA

TEMPERATURE RANGE	(-50 +200)°C
MODEL	With connector
SENSOR	NTC
CAPSULE	Diameter 6x60 mm
CABLE	Silicone
TERMINITIONS	Tin-plated, tips, connectors (other terminations available on request)
RESPONSE TIME	10 s in non-static liquid at 63.2% (depends on configuration)
IDENTIFICATION	Laser on cable, label (customizable)
DECLARATIONS OF CONFORMITY	CE MARKING, CONFLICT MINERALS, REACH, REACH, ROHS

RGM03C

PROBES WITH THREADED CONNECTION

PRODUCT FAMILY 15CR15

Probe with connector, NTC sensor, in silicone cable, M4 L. 34,85 mm capsule. Suitable for temperature sensing in refrigeration and air conditioning applications and in the food field.



TECHNICAL DATA

TEMPERATURE RANGE	(-50 +200)°C
MODEL	With connector
SENSOR	NTC
CAPSULE	M4 L. 34,85 mm
CABLE	Silicone
TERMINITIONS	Tin-plated, tips, connectors (other terminations available on request)
RESPONSE TIME	10 s in non-static liquid at 63.2% (depends on configuration)
IDENTIFICATION	Laser on cable, label (customizable)
DECLARATIONS OF CONFORMITY	CE MARKING, CONFLICT MINERALS, REACH, REACH, ROHS

RGM04C

PROBES WITH WELDED  
THREADED CONNECTION

PRODUCT FAMILY 15CR05

Probe with connector, NTC sensor, in silicone cable, diameter 4x40 mm capsule. Suitable for temperature sensing in heating applications and in the food field.



TECHNICAL DATA

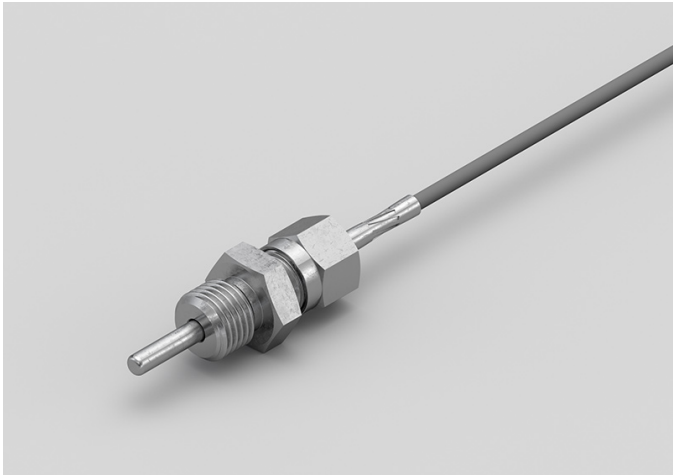
TEMPERATURE RANGE	(-50 +200)°C
MODEL	With connector
SENSOR	NTC
CAPSULE	Diameter 4x40 mm
CABLE	Silicone
TERMINITIONS	Tin-plated, tips, connectors (other terminations available on request)
RESPONSE TIME	10 s in non-static liquid at 63.2% (depends on configuration)
IDENTIFICATION	Laser on cable, label (customizable)
DECLARATIONS OF CONFORMITY	CE MARKING, CONFLICT MINERALS, REACH, REACH, ROHS

RGM05C

PROBES WITH SLIDING  
THREADED CONNECTION

PRODUCT FAMILY 15CR10

Probe with connector, NTC sensor, in silicone cable, diameter 4x40 mm capsule. Suitable for temperature sensing in heating applications and in the food field.



TECHNICAL DATA

TEMPERATURE RANGE	(-50 +200)°C
MODEL	With connector
SENSOR	NTC
CAPSULE	Diameter 4x40 mm
CABLE	Silicone
TERMINITIONS	Tin-plated, tips, connectors (other terminations available on request)
RESPONSE TIME	10 s in non-static liquid at 63.2% (depends on configuration)
IDENTIFICATION	Laser on cable, label (customizable)
DECLARATIONS OF CONFORMITY	CE MARKING, CONFLICT MINERALS, REACH, REACH, ROHS

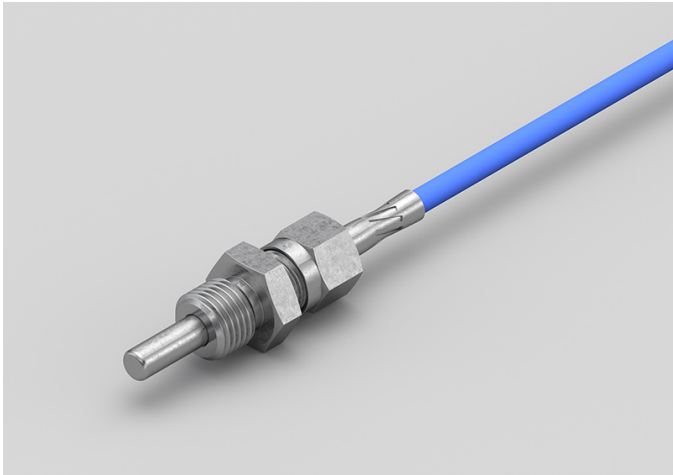


RGM06C

PROBES WITH SLIDING  
THREADED CONNECTION

PRODUCT FAMILY 15CR10

Probe with connector, NTC sensor, in silicone cable, diameter 6x60 mm capsule. Suitable for temperature sensing in heating applications and in the food field.



TECHNICAL DATA

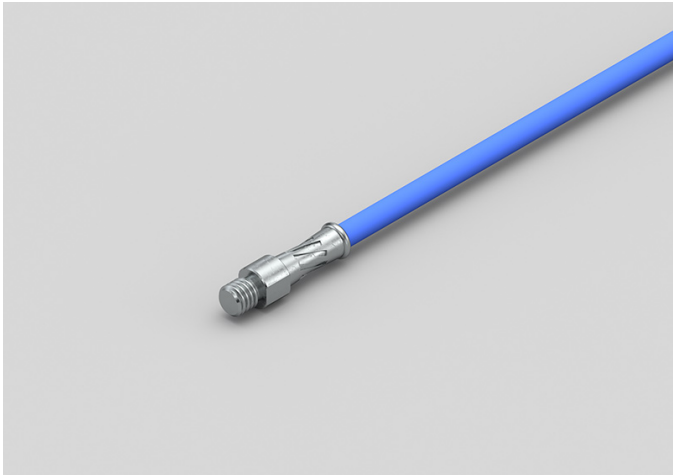
TEMPERATURE RANGE	(-50 +200)°C
MODEL	With connector
SENSOR	NTC
CAPSULE	Diameter 6x60 mm
CABLE	Silicone
TERMINITIONS	Tin-plated, tips, connectors (other terminations available on request)
RESPONSE TIME	10 s in non-static liquid at 63.2% (depends on configuration)
IDENTIFICATION	Laser on cable, label (customizable)
DECLARATIONS OF CONFORMITY	CE MARKING, CONFLICT MINERALS, REACH, REACH, ROHS

RGM07C

PROBES WITH THREADED CONNECTION

PRODUCT FAMILY 15CR15

Probe with connector, NTC sensor, in silicone cable, M6 L. 30,5 mm capsule. Suitable for temperature sensing in refrigeration and air conditioning applications, in air quality control applications, in the field of renewable energy and in the food field.



TECHNICAL DATA

TEMPERATURE RANGE	(-50 +200)°C
MODEL	With connector
SENSOR	NTC
CAPSULE	M6 L. 30,5 mm
CABLE	Silicone
TERMINITIONS	Tin-plated, tips, connectors (other terminations available on request)
RESPONSE TIME	10 s in non-static liquid at 63.2% (depends on configuration)
IDENTIFICATION	Laser on cable, label (customizable)
DECLARATIONS OF CONFORMITY	CE MARKING, CONFLICT MINERALS, REACH, REACH, ROHS

RTM00C

PROBES WITH THREADED CONNECTION

PRODUCT FAMILY 15CR15

Probe with connector, NTC sensor, in Teflon cable, M6 L. 30,5 mm capsule. Suitable for temperature sensing in the food field.



TECHNICAL DATA

TEMPERATURE RANGE	(-50 +250)°C
MODEL	With connector
SENSOR	NTC
CAPSULE	M6 L. 30,5 mm
CABLE	Teflon
TERMINITIONS	Tin-plated, tips, connectors (other terminations available on request)
RESPONSE TIME	10 s in non-static liquid at 63.2% (depends on configuration)
IDENTIFICATION	Laser on cable, label (customizable)
DECLARATIONS OF CONFORMITY	CE MARKING, CONFLICT MINERALS, REACH, REACH, ROHS

RTM01C

PROBES WITH SLIDING  
THREADED CONNECTION

PRODUCT FAMILY 15CR10

Probe with connector, NTC sensor, in Teflon cable, diameter 6x60 mm capsule. Suitable for temperature sensing in heating applications and in the food field.



TECHNICAL DATA

TEMPERATURE RANGE	(-50 +250)°C
MODEL	With connector
SENSOR	NTC
CAPSULE	Diameter 6x60 mm
CABLE	Teflon
TERMINITIONS	Tin-plated, tips, connectors (other terminations available on request)
RESPONSE TIME	10 s in non-static liquid at 63.2% (depends on configuration)
IDENTIFICATION	Laser on cable, label (customizable)
DECLARATIONS OF CONFORMITY	CE MARKING, CONFLICT MINERALS, REACH, REACH, ROHS

RTM02C

PROBES WITH WELDED  
THREADED CONNECTION

PRODUCT FAMILY 15CR05

Probe with connector, NTC sensor, in Teflon cable, diameter 6x60 mm capsule. Suitable for temperature sensing in refrigeration and air conditioning applications, in the food field and in the industrial field.



TECHNICAL DATA

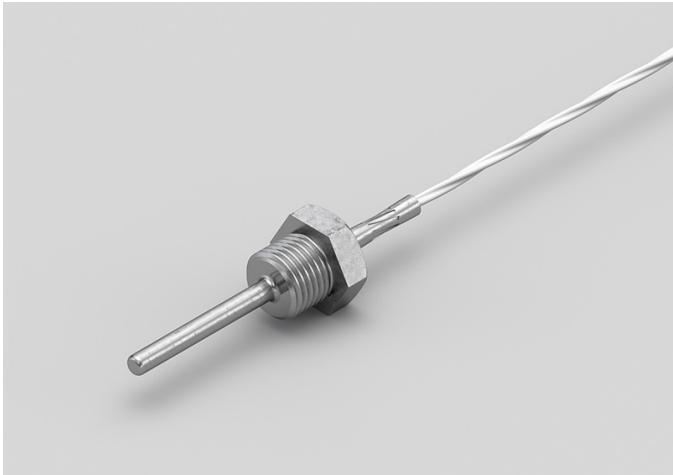
TEMPERATURE RANGE	(-50 +250)°C
MODEL	With connector
SENSOR	NTC
CAPSULE	Diameter 6x60 mm
CABLE	Teflon
TERMINITIONS	Tin-plated, tips, connectors (other terminations available on request)
RESPONSE TIME	10 s in non-static liquid at 63.2% (depends on configuration)
IDENTIFICATION	Laser on cable, label (customizable)
DECLARATIONS OF CONFORMITY	CE MARKING, CONFLICT MINERALS, REACH, REACH, ROHS

RTM03C

PROBES WITH WELDED  
THREADED CONNECTION

PRODUCT FAMILY 15CR05

Probe with connector, NTC sensor, in Teflon cable, diameter 4x40 mm capsule. Suitable for temperature sensing in refrigeration and air conditioning applications, in the food field and in the industrial field.



TECHNICAL DATA

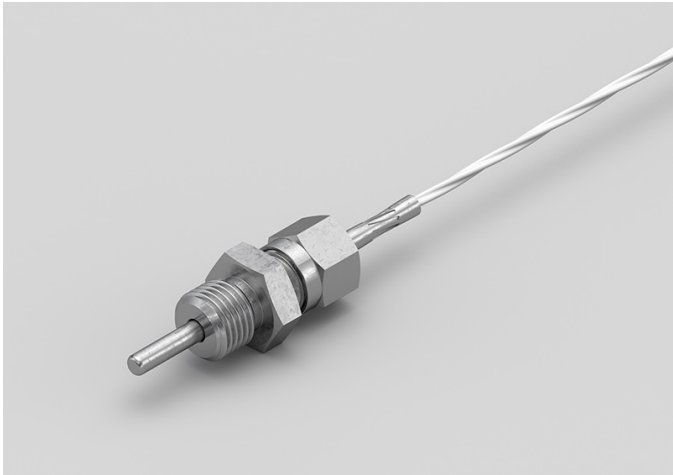
TEMPERATURE RANGE	(-50 +250)°C
MODEL	With connector
SENSOR	NTC
CAPSULE	Diameter 4x40 mm
CABLE	Teflon
TERMINITIONS	Tin-plated, tips, connectors (other terminations available on request)
RESPONSE TIME	10 s in non-static liquid at 63.2% (depends on configuration)
IDENTIFICATION	Laser on cable, label (customizable)
DECLARATIONS OF CONFORMITY	CE MARKING, CONFLICT MINERALS, REACH, REACH, ROHS

RTM04C

PROBES WITH SLIDING  
THREADED CONNECTION

PRODUCT FAMILY 15CR10

Probe with connector, NTC sensor, in Teflon cable, diameter 4x40 mm capsule. Suitable for temperature sensing in heating applications and in the food field.



TECHNICAL DATA

TEMPERATURE RANGE	(-50 +250)°C
MODEL	With connector
SENSOR	NTC
CAPSULE	Diameter 4x40 mm
CABLE	Teflon
TERMINITIONS	Tin-plated, tips, connectors (other terminations available on request)
RESPONSE TIME	10 s in non-static liquid at 63.2% (depends on configuration)
IDENTIFICATION	Laser on cable, label (customizable)
DECLARATIONS OF CONFORMITY	CE MARKING, CONFLICT MINERALS, REACH, REACH, ROHS

RVM00C

PROBES WITH SLIDING  
THREADED CONNECTION

PRODUCT FAMILY 15CR10

Probe with connector, NTC sensor, in glass fibre cable, diameter 6x60 mm capsule. Suitable for temperature sensing in the field of renewable energy and in the food field.



TECHNICAL DATA

TEMPERATURE RANGE	(0 +300)°C
MODEL	With connector
SENSOR	NTC
CAPSULE	Diameter 6x60 mm
CABLE	Glass fibre
TERMINITIONS	Tin-plated, tips, connectors (other terminations available on request)
RESPONSE TIME	10 s in non-static liquid at 63.2% (depends on configuration)
IDENTIFICATION	Laser on cable, label (customizable)
DECLARATIONS OF CONFORMITY	CE MARKING, CONFLICT MINERALS, REACH, REACH, ROHS



RVM01C

PROBES WITH SLIDING  
THREADED CONNECTION

PRODUCT FAMILY 15CR10

Probe with connector, NTC sensor, in glass fibre cable, diameter 4x40 mm capsule. Suitable for temperature sensing in heating applications and in the food field.



TECHNICAL DATA

TEMPERATURE RANGE	(0 +300)°C
MODEL	With connector
SENSOR	NTC
CAPSULE	Diameter 4x40 mm
CABLE	Glass fibre
TERMINITIONS	Tin-plated, tips, connectors (other terminations available on request)
RESPONSE TIME	10 s in non-static liquid at 63.2% (depends on configuration)
IDENTIFICATION	Laser on cable, label (customizable)
DECLARATIONS OF CONFORMITY	CE MARKING, CONFLICT MINERALS, REACH, REACH, ROHS

RVM02C

PROBES WITH THREADED CONNECTION

PRODUCT FAMILY 15CR15

Probe with connector, NTC sensor, in glass fibre cable, M6 L. 30,5 mm capsule. Suitable for temperature sensing in the field of renewable energy and in the food field.



TECHNICAL DATA

TEMPERATURE RANGE	(0 +300)°C
MODEL	With connector
SENSOR	NTC
CAPSULE	M6 L. 30,5 mm
CABLE	Glass fibre
TERMINITIONS	Tin-plated, tips, connectors (other terminations available on request)
RESPONSE TIME	10 s in non-static liquid at 63.2% (depends on configuration)
IDENTIFICATION	Laser on cable, label (customizable)
DECLARATIONS OF CONFORMITY	CE MARKING, CONFLICT MINERALS, REACH, REACH, ROHS

RVM03C

# PROBES WITH WELDED THREADED CONNECTION

PRODUCT FAMILY 15CR05

Probe with connector, NTC sensor, in glass fibre cable, diameter 6x60 mm capsule. Suitable for temperature sensing in heating applications and in the food field.



## TECHNICAL DATA

TEMPERATURE RANGE	(0 +300)°C
MODEL	With connector
SENSOR	NTC
CAPSULE	Diameter 6x60 mm
CABLE	Glass fibre
TERMINITIONS	Tin-plated, tips, connectors (other terminations available on request)
RESPONSE TIME	10 s in non-static liquid at 63.2% (depends on configuration)
IDENTIFICATION	Laser on cable, label (customizable)
DECLARATIONS OF CONFORMITY	CE MARKING, CONFLICT MINERALS, REACH, REACH, ROHS

RVM04C

PROBES WITH WELDED  
THREADED CONNECTION

PRODUCT FAMILY 15CR05

Probe with connector, NTC sensor, in glass fibre cable, diameter 4x40 mm capsule. Suitable for temperature sensing in the industrial field.



TECHNICAL DATA

TEMPERATURE RANGE	(0 +300)°C
MODEL	With connector
SENSOR	NTC
CAPSULE	Diameter 4x40 mm
CABLE	Glass fibre
TERMINITIONS	Tin-plated, tips, connectors (other terminations available on request)
RESPONSE TIME	10 s in non-static liquid at 63.2% (depends on configuration)
IDENTIFICATION	Laser on cable, label (customizable)
DECLARATIONS OF CONFORMITY	CE MARKING, CONFLICT MINERALS, REACH, REACH, ROHS





**SACET S.R.L.**  
**Via del Candel, 55/D**  
**32100 Belluno (BL) Italy**

**C.F. E P.I. 00654590256**

**PHONE NUMBER +39 0437 33166**

**EMAIL [info@sacet-probes.com](mailto:info@sacet-probes.com)**